



PORT OF LOS ANGELES CIP

January 23, 2019

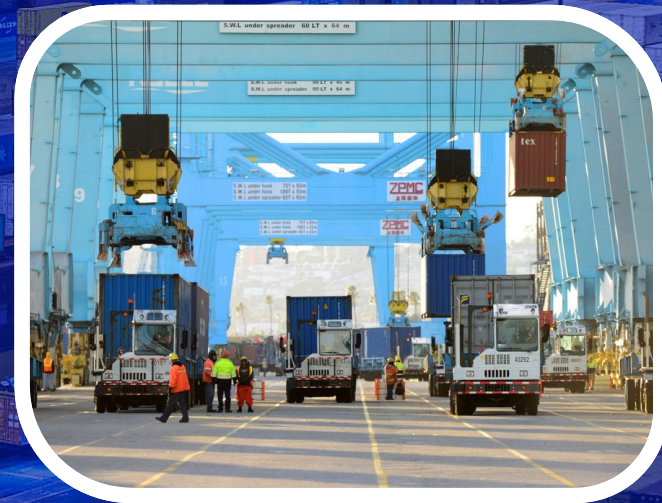
Shaun Shahrestani – Chief harbor Engineer

#1 Container Port in the Americas

Container Volume

- Twenty-foot Equivalent Units (TEUs)
- 9.3 million TEUs in 2017
- 8.8 million TEUs in 2016
- 8.2 million TEUs in 2015
- 8.3 million TEUs in 2014
- 7.9 million TEUs in 2013
- 8.1 million TEUs in 2012
- 7.9 million TEUs in 2011
- 7.8 million TEUs in 2010
- 6.7 million TEUs in 2009
- 7.8 million TEUs in 2008
- 8.4 million TEUs in 2007
- 8.5 million TEUs in 2006

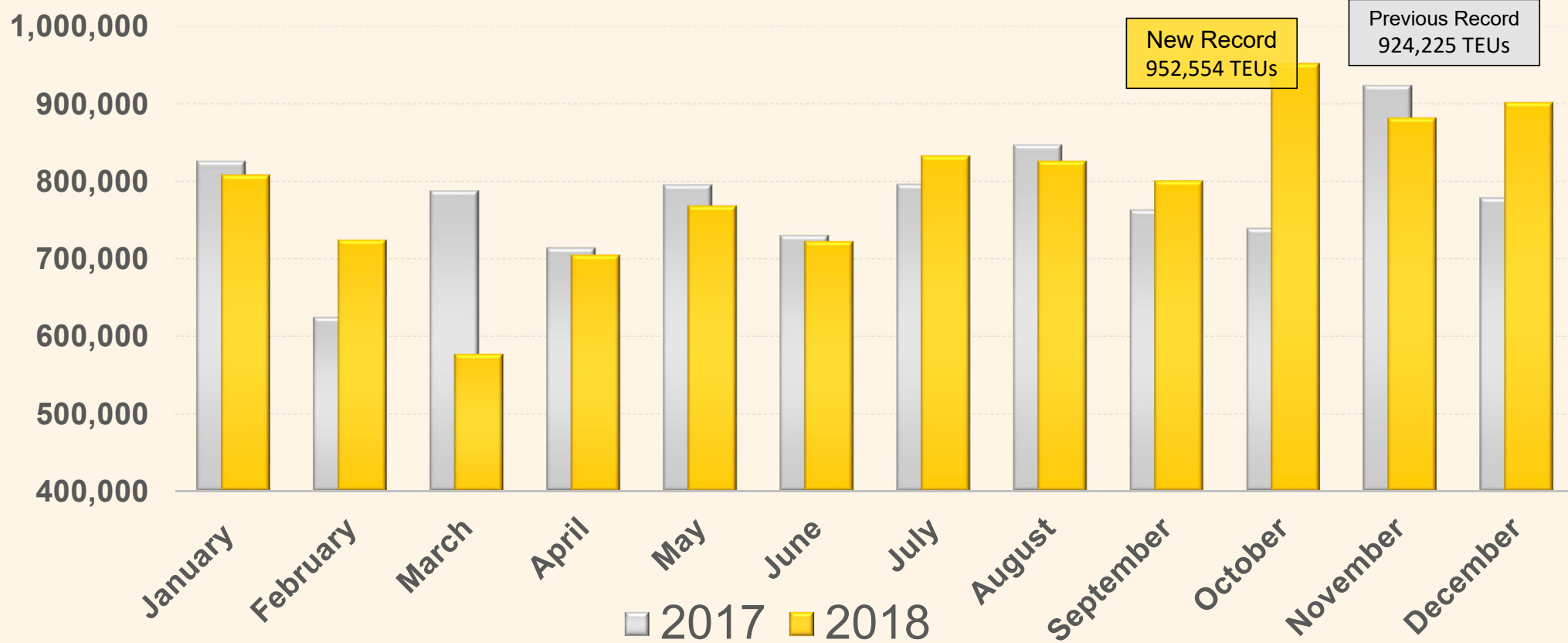
9.45
Million
TEUs in 2018



Trade Tariffs Create Uncertainty

- This year, the US imposed tariffs on over \$250 billion worth of Chinese imports
- China retaliated with tariffs on over \$110 billion worth of US exports
- Importers are rushing to get cargo in before end of 2018
- Tariffs increases from 10% to 25% on January 1, 2019 (Delayed 3 Months)
- First Quarter of 2019 will be challenging with over-supply of inventory and future tariff implications

Container Cargo Volumes



TOP TRADING PARTNERS & COMMODITIES



DESIGN & PROFESSIONAL SERVICES OPPORTUNITIES

On-Call Consultants

1. Engineering Division
2. Construction Division
3. Environmental Management Division

Project Specific Opportunities

www.portoflosangeles.org

www.labavn.org

Engineering Division

- **Design Services On-Call**
Five (5) 3-Year @ \$3M ea. Expires Jan 2020
- **MOTEMS On- Call**
Three (3) 3-year @ \$3M ea.
- **Project Specific Agreements for Wilmington Waterfront Projects and SR47/Harbor Blvd Improvements**
- **RFP for next cycle of Design Services On-Calls March/April 2019!**
Expect 5-6 Contracts @ 3Yrs , \$3-5M ea.

Construction Division

- **CM Services On-Call**
Five (5) 3-Year \$2M Ea. Expire in 2021
- **CM Services On-Call**
Five (5) 3-Year \$2M Ea. Agreements In Process

Environmental Division

- **CEQA/NEPA Services On-Call**
Seven (7) 3-Year @ \$700K-\$4M ea. Expires December 2019

RFP ~ March 2019

- **Site Assessment and Restoration Services On- Call**
Seven (7) 3-year @ \$1.75M-\$4M ea. Expires March 2020

RFP ~ Summer/Fall 2019

Air Quality Services On- Call

Five (5) 3-year @ \$500K-\$2.5M ea. Expires April 2020

RFP ~ Summer/Fall 2019

Additional On-Call: Least Tern Nesting, Air Monitoring, Water Quality

Capital Program



Capital Improvement Program 1997 - 2021



Berth 222-236 “Everport” Redevelopment



- Deepen 2 Berths to -53' and -47'
- Electrical Infrastructure for 3 additional cranes
- Backland Improvements
- 5 AMP Vaults
- Wharf Repairs

Total Project Cost = \$65 M

- **Advertised Nov 16th**
- **Construction Start April 2019**

MOTEMS Program (Ongoing)

- MOTEMS = “Marine Oil Terminal Engineering & Maintenance Standards”
- Berths 167-169 (Shell)
New Berthing Facility \$30M
 - **Construction start: Early 2020**
- Berths 238-239 (PBF)
New Berthing Facility \$25.7M
 - **Construction Start: Early 2020**

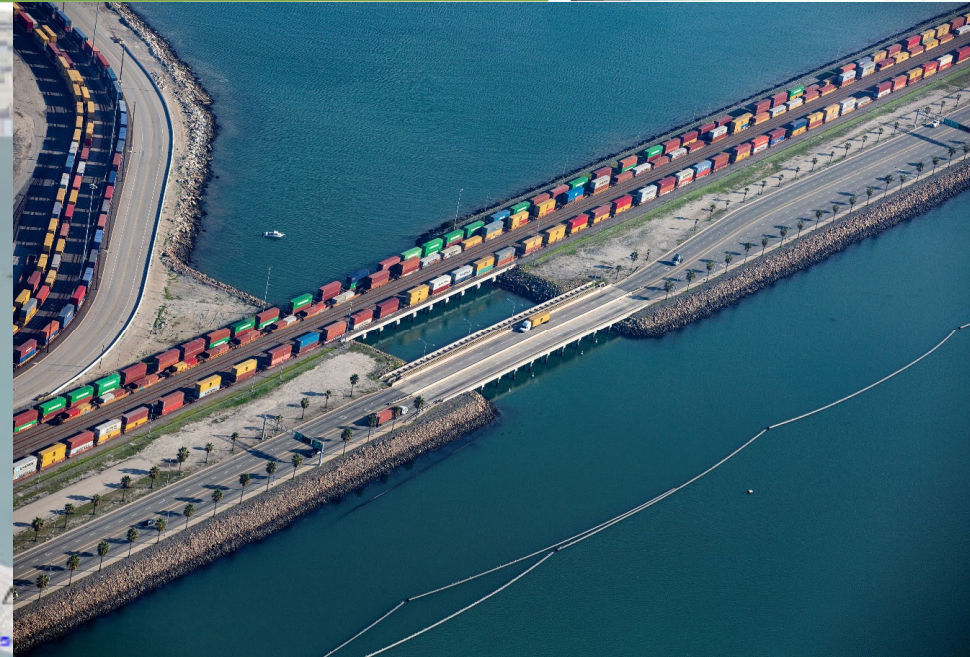


MOTEMS Program (Ongoing)

- Berths 148-149 (P66) \$26M and Berth 164 (Valero) \$27M
- **Construction Start: Mid 2020**
- Berth 163 (NuStar) and Berths 187-189 (Vopak)
- **Projects to be implemented by Tenant**



Pier 400 Corridor Storage Track Expansion



- Project Cost: \$34M
- *Advertise Jan 2020*
- Construction: May 2020 to Dec 2021

West Basin Lead Track Gap Closure



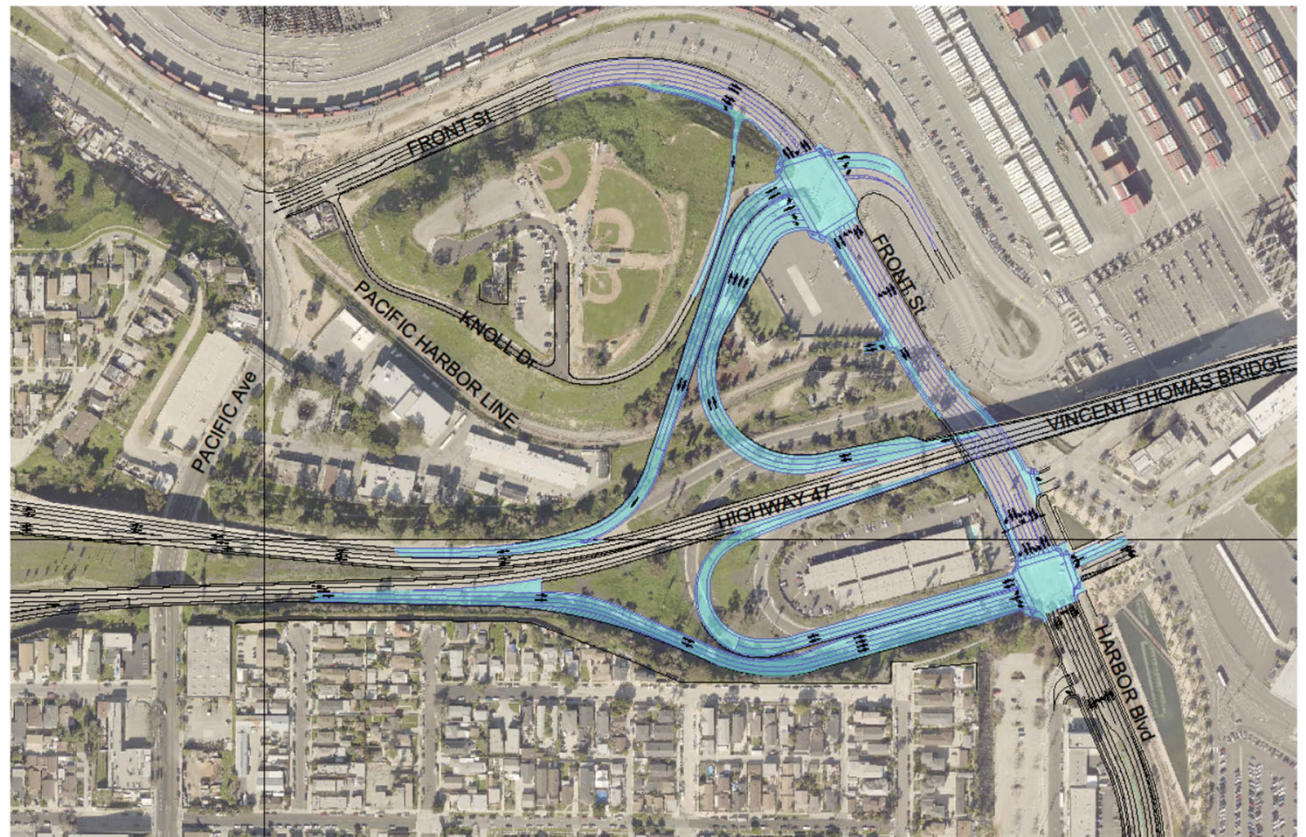
- **Cost: \$10M**
- ***Advertise Aug 2019***
- **Construction: Feb 2020 to Jan 2021**

Grant Funding \$5,992,000

SR 47/Vincent Thomas Bridge & Front Street/Harbor Blvd Interchange Reconfiguration



- **Cost: \$31M**
- **Design: Oct 2018 to Sept 2020**
- **\$3M in Grant Funding (Design Only)**



Berth 121-131 “Yang Ming” Redevelopment



Status:

- *EIR/EIS in Process*

Project Elements

- New 1300' Wharf, 53' Depth
- 8 New 100' gauge cranes
- Expanded Rail (3 loading Tracks w/ RMG Operations)

Schedule:

- TBD

Cost:

- Total Cost: \$220M

Port Electrification



Badger Avenue Bridge 3rd Track

- Existing 2 Track Rail Bridge needs a 3rd Track By 2030
- Cost: \$250+M
- Conceptual Design RFP end of 2020
- PS&E and CM RFP's to follow.





COMMUNITY



San Pedro Public Market Town Square & Promenade



- **City Investment**
- **Project Cost: \$44M**
- ***Advertise: January 2019***

San Pedro Public Market (SPPM)



San Pedro Public Market Design Concepts

Wilmington Waterfront Promenade



Wilmington Waterfront Promenade Design Concept

- **Project Cost: \$52,700,000**
- ***Advertise: June 2019***
- **Construction: Dec 2019 to Dec 2021**

Wilmington Waterfront Promenade





Thank You

