

Construction Network – IE Transportation Panel September 18, 2019

Caltrans District 8



BE WORK™ ZONE ALERT

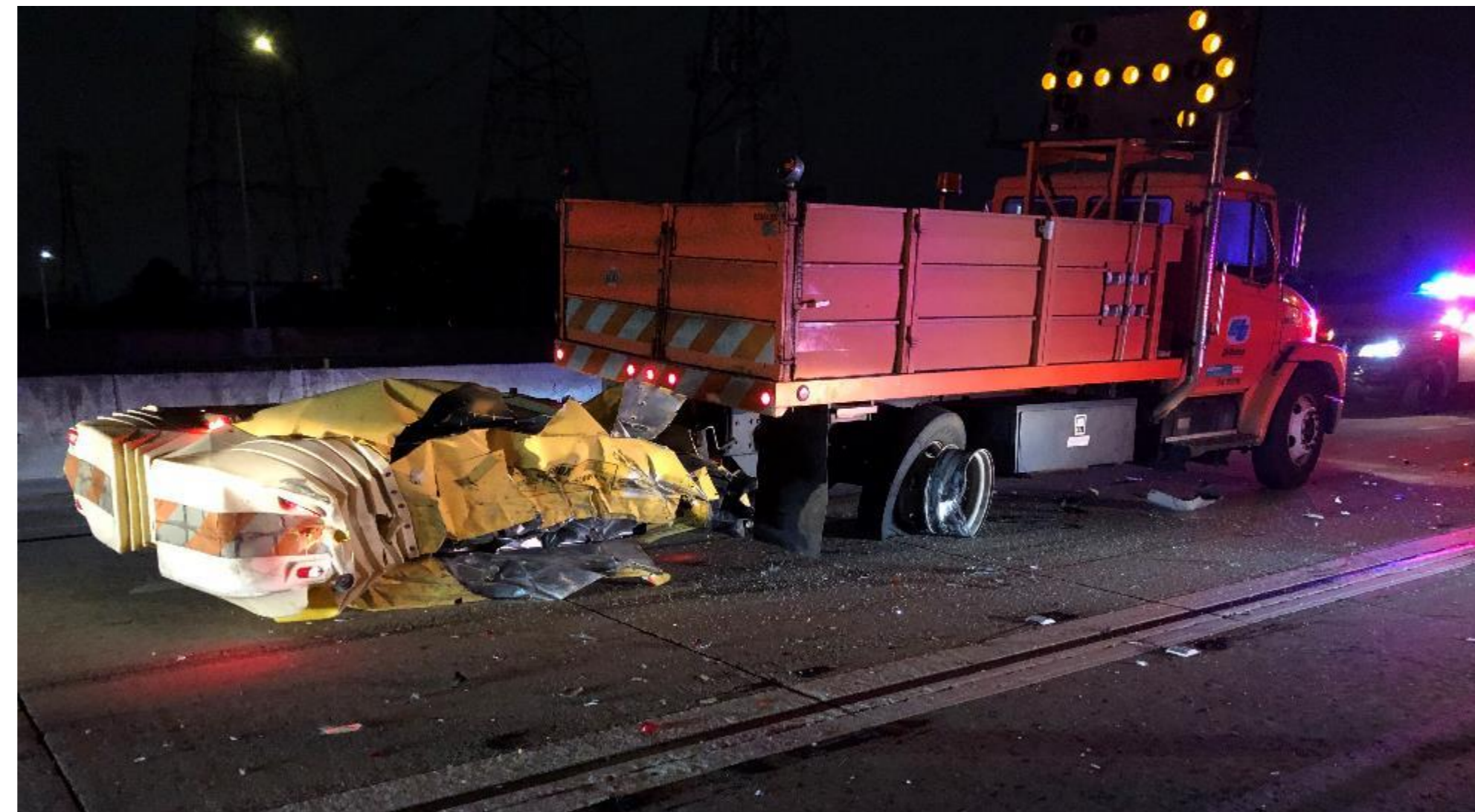
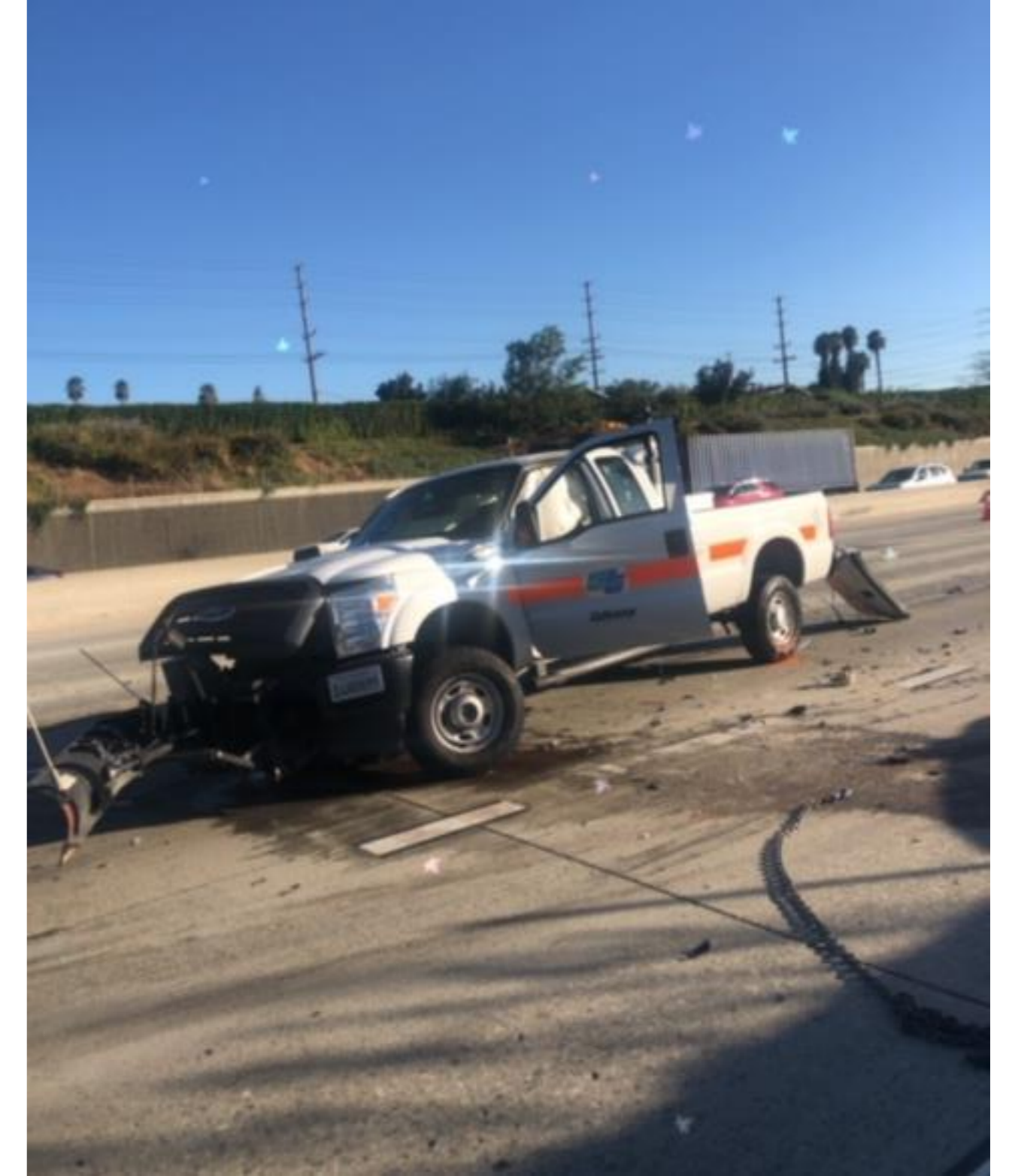
CALTRANS®

MOVE OVER










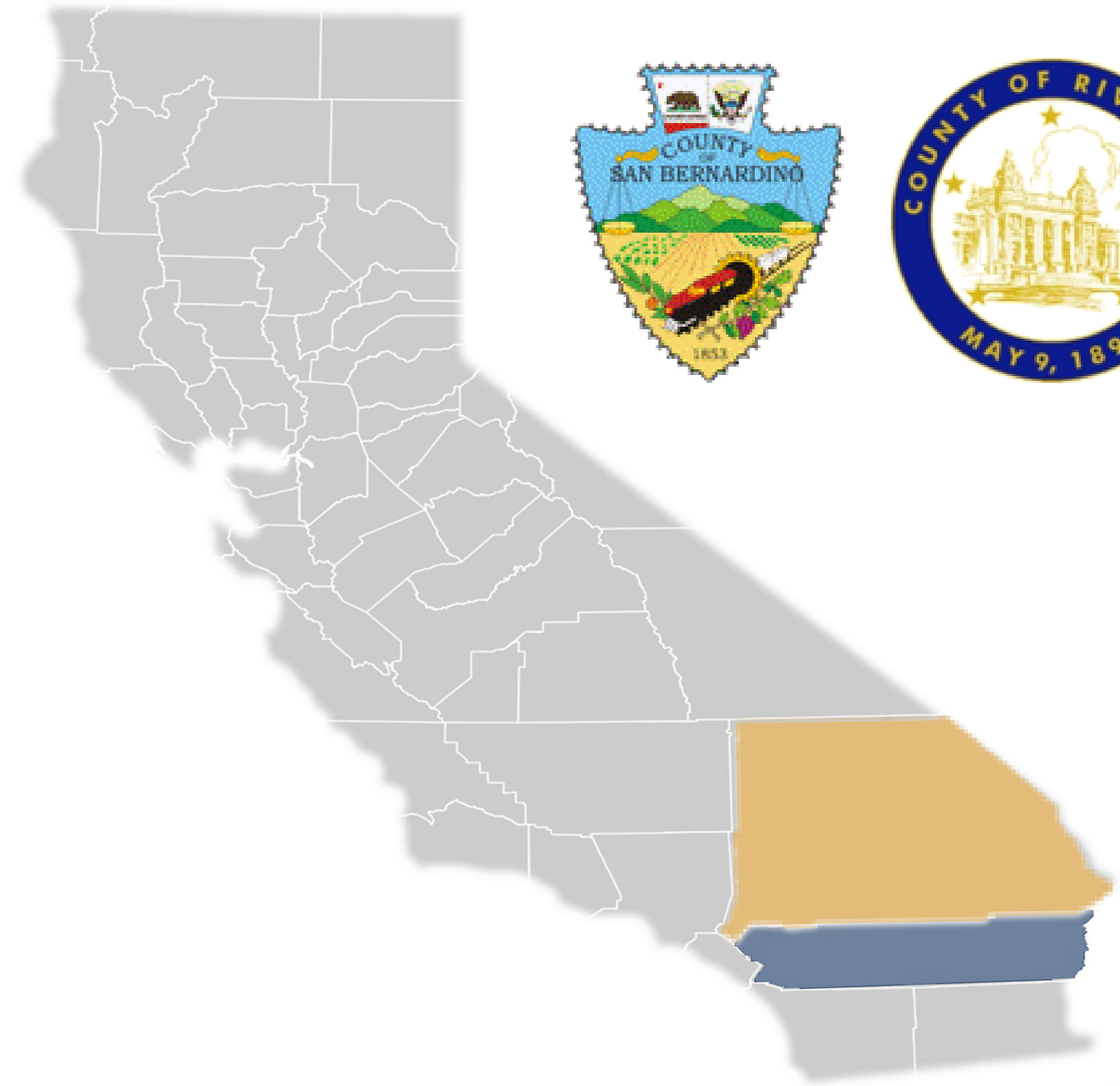
Safety Campaigns

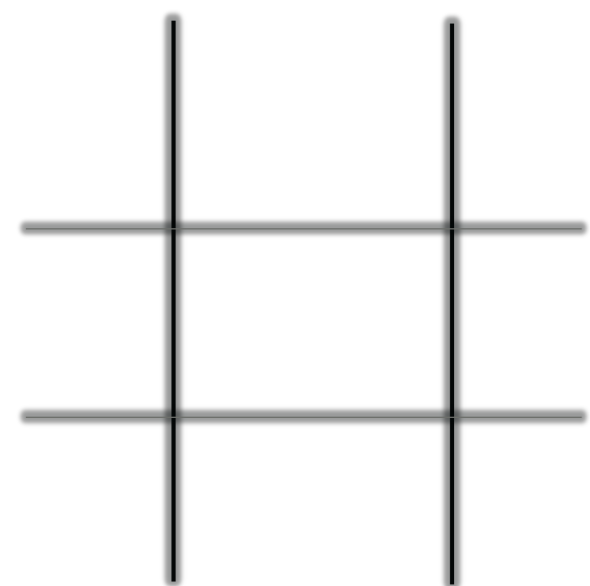
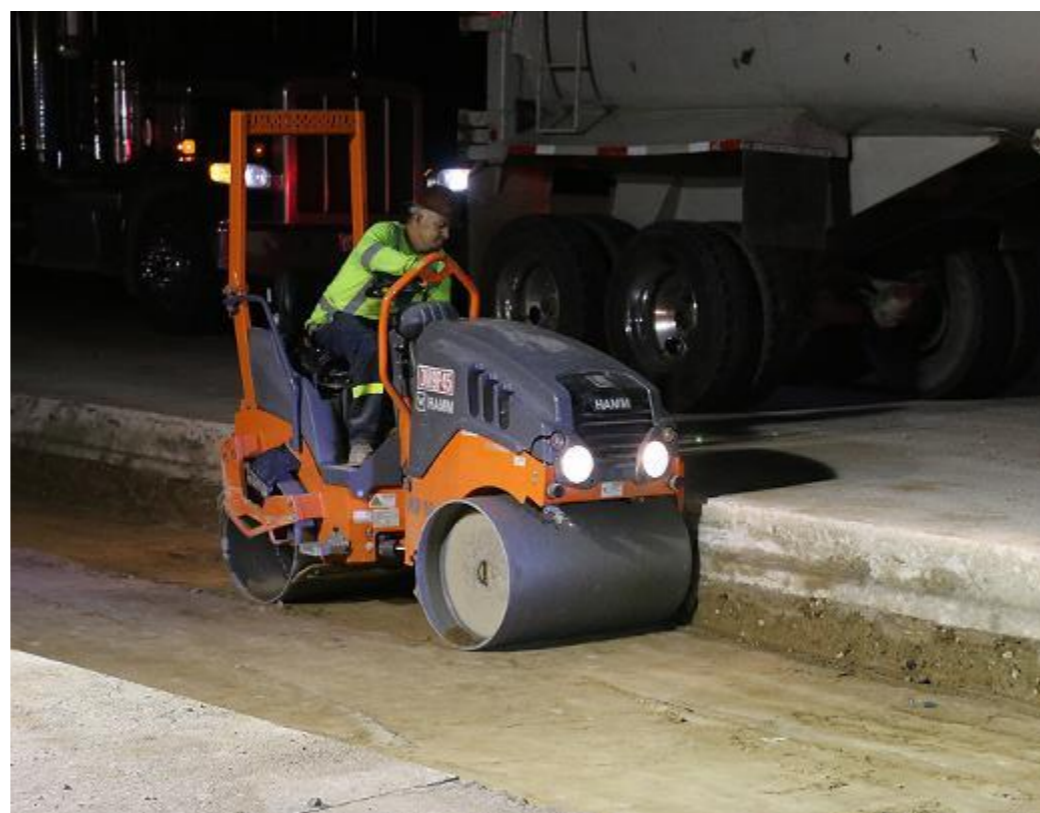
Near Misses



Caltrans District 8

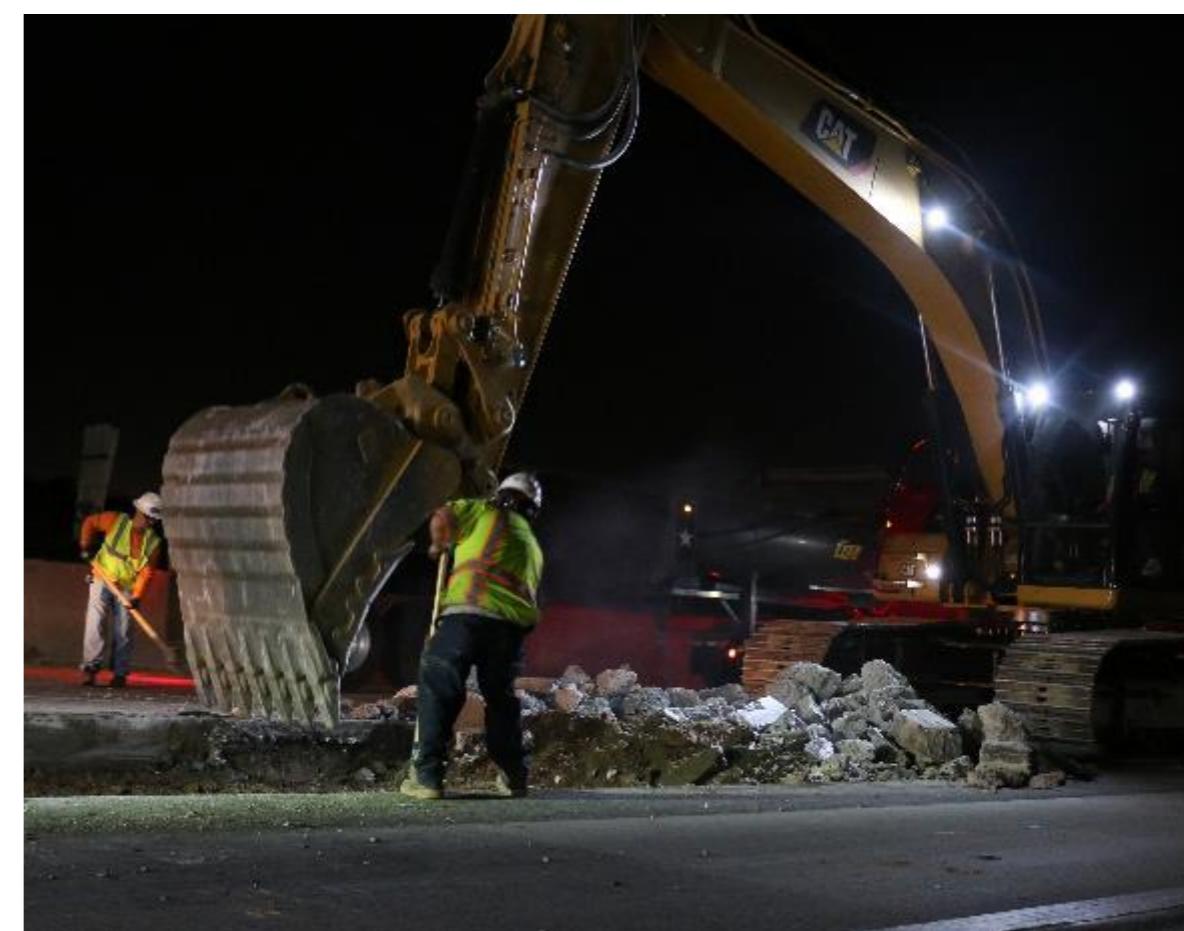
-  4.5 Million Residents of Riverside and San Bernardino County
-  49 Incorporated Cities
-  28,650 Square Miles
-  32 State Routes
-  4 Interstates
-  7,200 Lane Miles
-  1,400 Employees





60 SWARM

Hotline #: 1-833-60-SWARM
1-833-607-9726





Caltrans District 8 – Major Projects

▶ Kramer Junction Expressway – SR 58

- Widen to Four Lanes of Expressway
- Realignment of the Roadway
- Grade Separation for Railroad
- Increase Capacity and Safety
- Facilitate Commerce
- Began Late 2017
- Complete Late 2020



SB1 Statewide



Prior to SB1

- Capital \$2.5 B
- Maintenance \$270 M
- Total \$2.8 B



Post SB1

- Capital \$4.4 B
- Maintenance \$700 M
- Competitive Grants \$1.3 B
- Total \$6.4 billion

District 8 Capital Investment in Transportation – SHOPP Capital Program

- Last year – 24 projects delivered (RTL) = \$252.2 million
- Currently, six project totaling \$102.9 million remain to be advertised:
 - ✓ 38423 – SBD 10 TMS Elements in Redlands and Yucaipa – advertise date 9/16/19 = **\$7.9 million**
 - ✓ 0K121 – SBD 15 Pavement Rehab in Rialto and Fontana – advertise date 9/30/19 = **\$22.9 million**
 - ✓ 0R150 – SBD 40 Median Regrade near Essex – advertise date 9/30/19 = **\$22.2 million**
 - ✓ 0K840 – SBD Maintenance Building at Cluster Street – advertise date 9/30/19 = **\$5.7 million**
 - ✓ 1E570 – RIV 10 Bridge Rehab near Palm Springs – advertise date 9/30/19 = **\$13.2 million**
 - ✓ 1F141 – RIV 15 Replace Lane 3 & 4 in Temecula – advertise date 10/1/19 = **\$31 million**
- Fontana Maintenance Facility Design-Build = \$20 million – RFQ late September or early October 2019.



District 8 Capital Investment in Transportation – SHOPP Capital Program (cont).

- 19/20 – 31 projects with construction capital - \$847.7 million:
 - ✓ 0K122 – SBD 15 Pavement Rehab in Hesperia and Victorville – advertise June 2020 = **\$159 million**
 - ✓ 1C850 – RIV 74 Widen Lanes and Shoulders near Lake Elsinore – advertise May 2020 = **\$53.6 million**
 - ✓ 1C082 – RIV 10 Pavement Rehab near Blythe – advertise November 2020 = **\$282.8 million**
 - ✓ 1H290 – SBD 173 Construct Soldier Pile Wall near Cedar Glen – advertise December 2019 = **\$5.7 million**
 - ✓ 1C300 – SBD 10 Slope Paving in Redlands and Yucaipa – advertise February 2020 = **\$1.9 million**
 - ✓ 1F361 – SBD 60 Replace Guide Signs from LA County line to RIV County line – advertise February 2020 = **\$1.4 million**



A&E Contracts

- Caltrans statewide A&E contracts over the next 24 months:
 - A&E Contracts – 10% of Caltrans workload
 - Next two year – 1,000 PYs/yr. of equivalent work to be contracted out
 - Average annual A&E Contract -- \$240 million to \$260 million
- District 8 A&E for the Capital Program:
 - This year 98.5 PYEs (\$22 million)
 - Majority related to Construction
 - Followed by Design and Environmental Planning



District 8 A&E Contracts and Status

- Primarily in Design, Environmental Planning and Construction
- Contract length from 2-5 years
- Currently 18 contracts in District = **\$79.8 million**:
 - ✓ Construction: five contracts = **\$33.4 million**
 - ✓ Environmental Planning: four contracts = **\$17 million**
 - ✓ Design: two contracts = **\$11.3 million**
 - ✓ Program Project Management four contracts = **\$14.4 million**
 - ✓ And others, Operations, Right of Way Engineering and Transportation Planning



District 8 A&E Contracts and Status (cont.)

- Four contracts under procurement = **\$20.1 million**:
 - ✓ Construction: adding one new contract for I-10 Express Lane inspection = **\$10 million**
 - ✓ Environmental Planning: two contracts in procurement = **\$7 million**
 - Environmental Generalist – Interviewed on 8/30/19 – execution 12/13/19
 - Biological Studies – SOQ due 10/2/19 – execution 10/18/19
 - ✓ Program Project Management – one in procurement; outreach on 10/4/19 and RFQ after = **\$3 million**

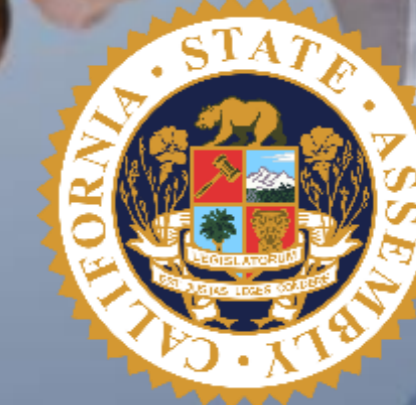
PARTNERSHIPS



County of Riverside
Transportation Department



cta San Bernardino County
Transportation Authority



Caltrans District 8 – Stay Connected

Stay current on all Caltrans District 8 news and events by visiting us on social media and our website:



@Caltrans8



@Caltrans8



Caltrans8.info

For live traffic information please download our Quickmap app or visit Quickmap.dot.ca.gov:



For more information, contact Public Affairs at (909) 383-4631

Visit Rebuildingca.ca.gov for Current SB 1 Information

Caltrans District 8 looks forward to working with you to provide a safe and reliable transportation network for the residents of San Bernardino and Riverside Counties.

