

CONSTRUCTION UPDATE

Construction Network: IE Transportation Panel

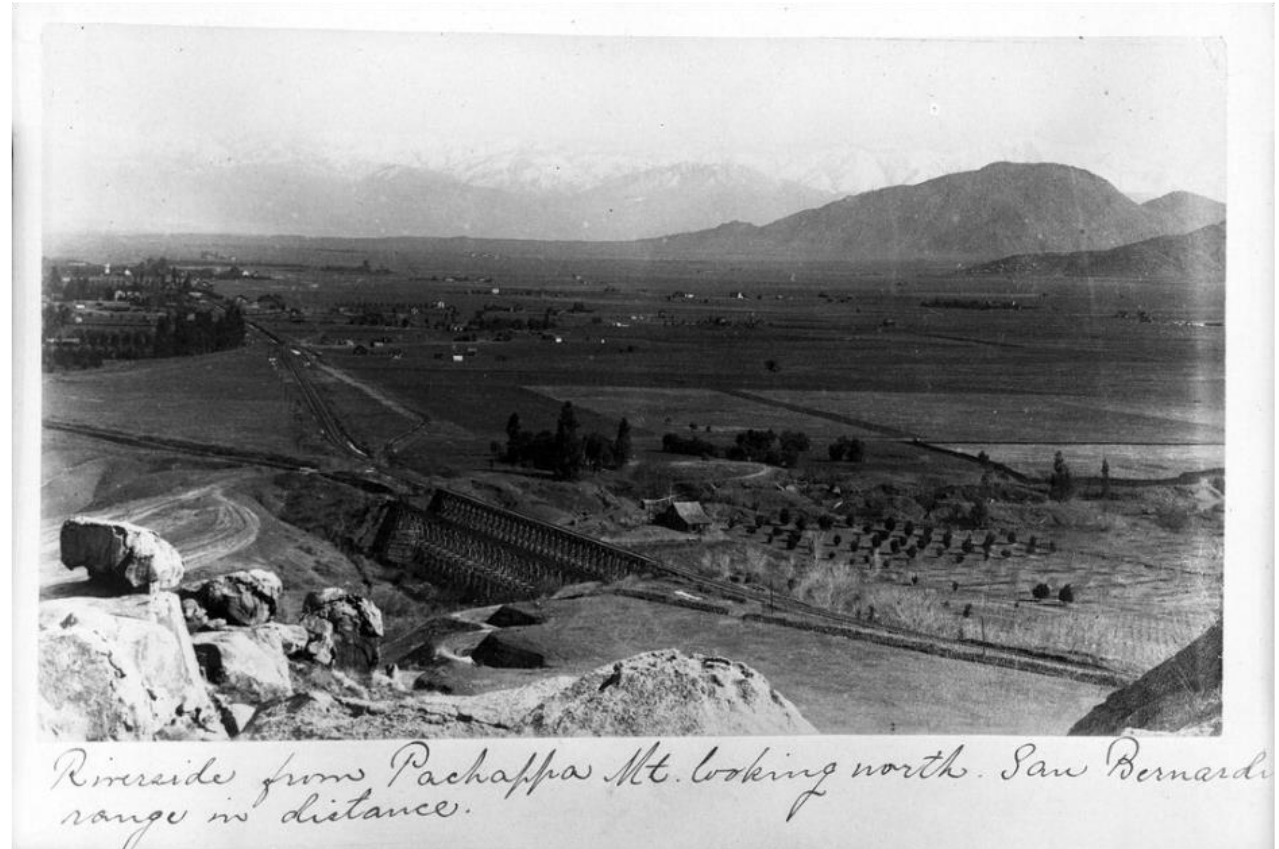
Bryce Johnston, Capital Projects Manager

September 18, 2019



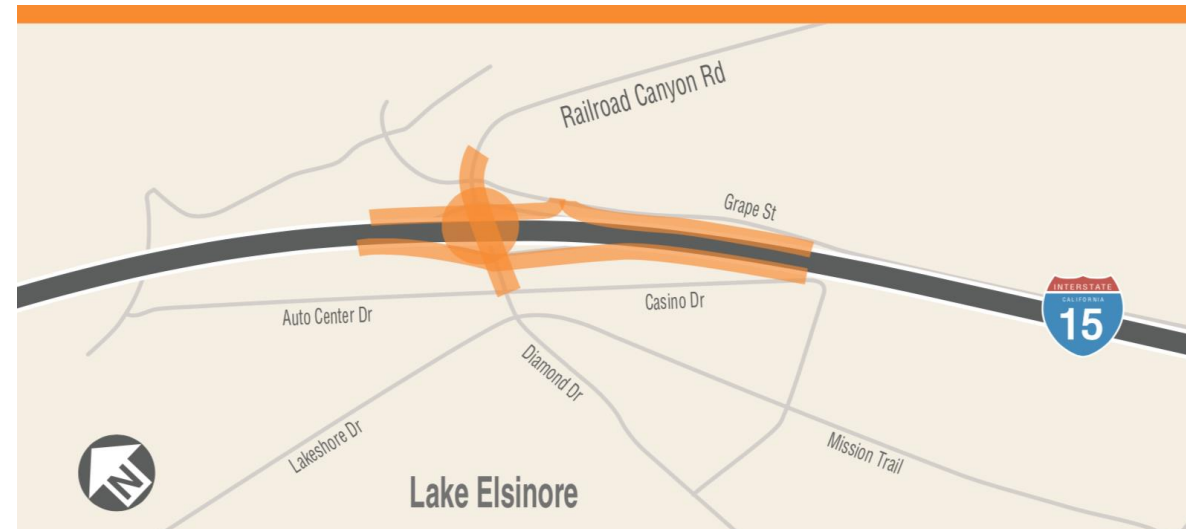
Route 91 Pachappa Underpass, Riverside

- Bid opening: Oct. 3, 2019
- Engineer's estimate: \$9 million
- CM: Jacobs Engineering



I-15 Railroad Canyon IC, Lake Elsinore

- Advertise for bids: January 2020
- Engineer's estimate: \$40 million
- CM: Arcadis



I-215 Placentia Ave. Interchange, Perris

- Advertise for bids: April 2020
- Engineer's estimate: \$45 million
- CM: Vali Cooper (TRC)



71/91 Interchange, Corona

- Advertise for bids: Summer 2021
- Engineer's estimate: \$100 million
- CM: To be determined, RFP April 2020?



Future Projects

- 2nd Construction Package Mid County Parkway –
Construction estimate \$80 million
 - Design to begin soon
- Santa Ana River Trail (\$45 million)
 - Environmental Phase



Future Projects – Continued

- 15/91 Express Lanes Connector (\$220 million)
 - Connection from eastbound 91 express lanes to future northbound 15 express lanes
- SR-91 Corridor Operations Project (Est. \$36.2 million)
 - Auxiliary Lane, Westbound 91, Green River Road to 241

15 Express Lanes

- Add two express in both directions from SR-60 to Cajalco Road.
 - 11 bridges
 - 6 soundwalls
- Lanes are expected to open in late 2020



Route 60 Truck Lanes Project Underway

- Adding eastbound truck climbing lane and westbound truck descending lane
- Widening shoulders to standards:
 - 12' outside shoulders
 - 11' inside shoulders
- Increasing median barrier height
- Creating wildlife crossings
- Contractor Skanska
- CM- Falcon

