

LGB's Capital Program Update

Cynthia Guidry, P.E.
Airport Director



long beach
airport

where the going is easy®



Background

- Owned and operated by City of Long Beach
- Created in 1923. Historic Terminal constructed in 1941
- Passenger Traffic: 3.5 Million in 2019
- Commercial Air Carrier Profile:
 - 16 Non-stop destinations
 - 50 air carrier slots, 3 recently available
- General Aviation:
 - Over 300,000 operations
 - 2 Fixed Base Operators
- Economic Impact to Region:
 - **\$8.6B**
 - **46,000 jobs**

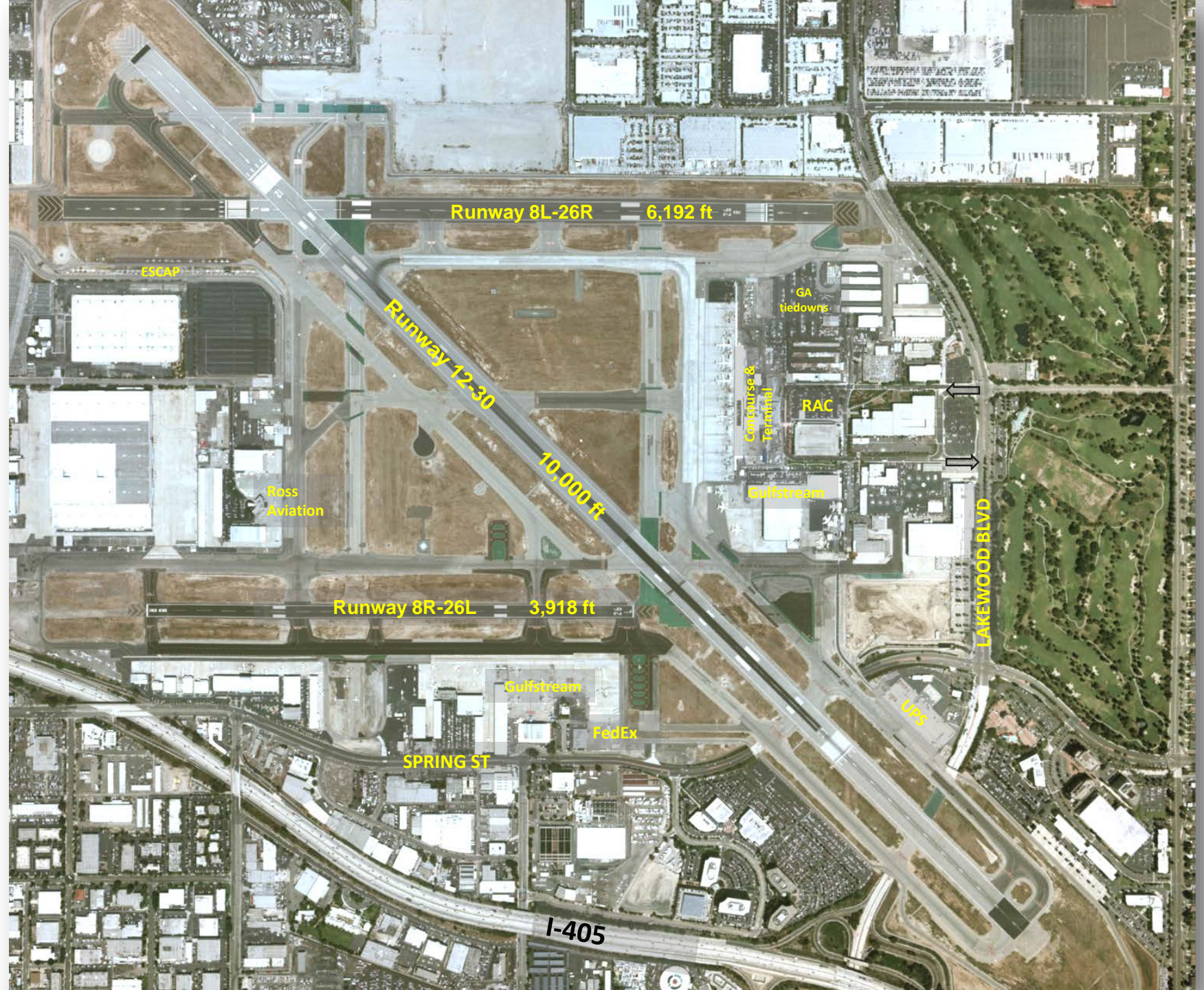


Airport Layout



long beach
airport

where the going is easy®



CIP Overview

- **10-year program**
- **Funding Sources:** FAA AIP grants, TSA grants, PFC, CFC, & Airport revenue
- **FY 2019 CIP Spending: \$19M**
- **FY 2020-2023 CIP Projection:** Estimated average of \$46M per year
- **Project Delivery Methods:** Design-Bid-Build, Design Build, Job Order Contracting



Doing Business with City

- Online registration and bidding system
- Register with Planet Bids
- 3 RFQs in procurement:
 - Planning & Design
 - Construction Management
 - Materials Testing



Completed Projects



long beach
airport

where the going is easy®

Parking Structure A (2017)

Rationale

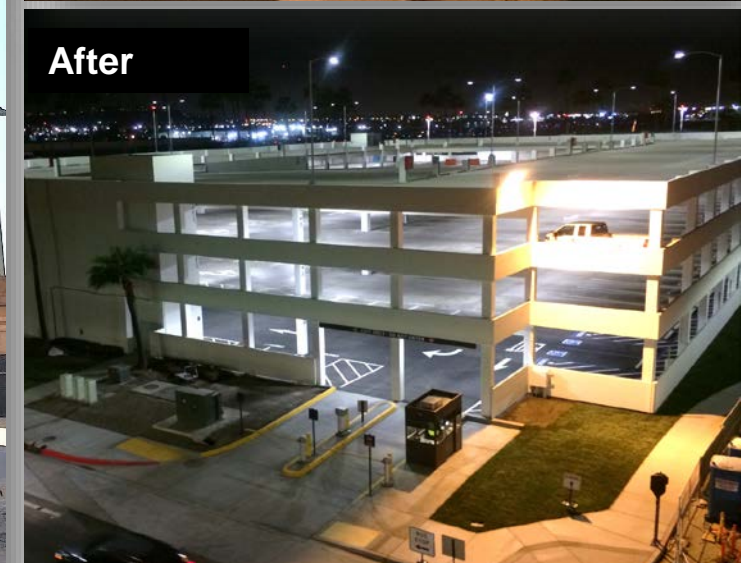
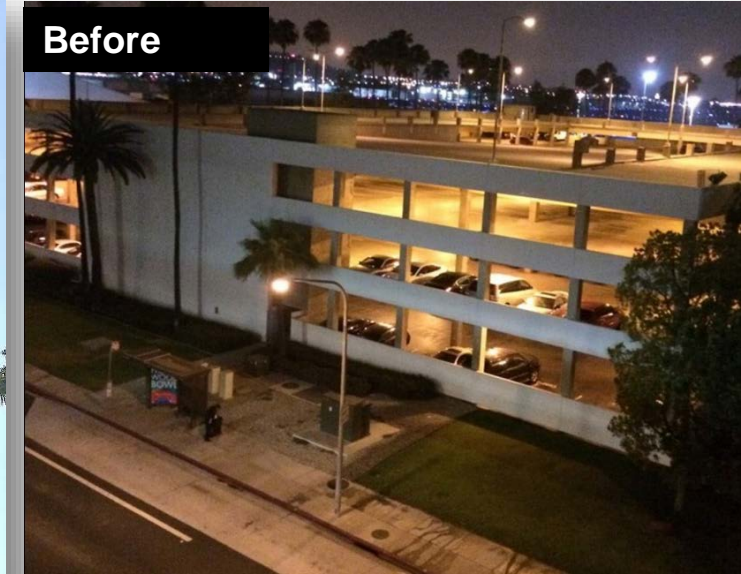
- Structural issues and aging of existing elevator/stair tower

Scope

- Construction of new elevator tower & open stair structure
- Upgrade to LED lights
- Aesthetics remodel and wayfinding sign improvements

Construction Cost

- \$5M



Runway 7R-25L Improvements (2018)

Rationale

- Recommendation from Airfield Geometry Study (AGS) to address LGB's complex geometry and hotspots

Scope

- AC pavement reconstruction
- 2 new run-ups & blast pads
- Runway re-designation from 7R-25L/7L-25R to 8R-26L/8L-26R

Construction Cost

- \$15M



Monument Sign (2019)

Rationale

- Outdated entry sign

Scope

- New 40' long sign, taking inspiration from a DC-3 aircraft wing
- New Landscaping and LED Lighting

Construction Cost

- \$500k



Terminal HVAC Replacement (2019)

Rationale

- Existing HVAC system reached its life expectancy and was not providing adequate cooling

Scope

- Like-for-like replacement
- Air handling unit (AHU)
- Condensing unit (CU), and
- Associated ductwork and piping

Construction Cost

- \$500k

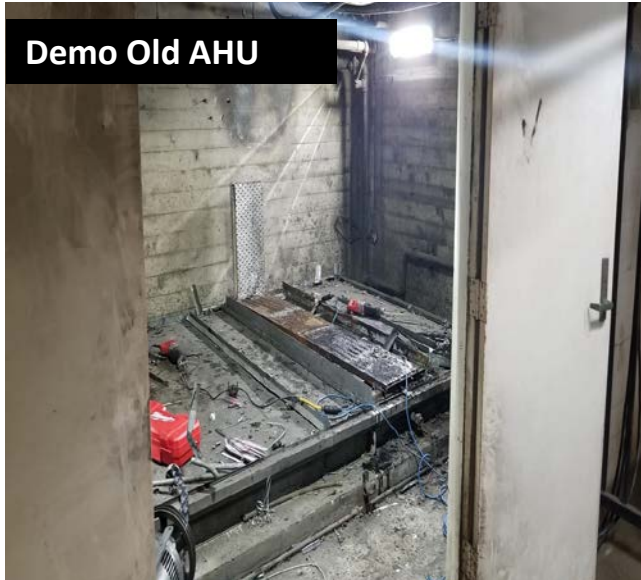
Old Condensing Unit



New Condensing Unit



Demo Old AHU



New AHU



Projects Currently in Construction



long beach
airport

where the going is easy®

Improvements to Taxiway C (2021)

Rationale

- Improve operational safety and efficiency

Scope

- Construction of Taxiway C at the location of former Runway 16L-34R
- Existing Taxiway C will be part of existing Apron.

Construction Cost

- \$23M



Ground Service Equipment (GSE) Charging Stations (2020)

Rationale:

- Inadequate amount of chargers
- Consistent with sustainability efforts, all GSE at LGB is to be fully electric

Scope:

- Replace 5 Existing Charging Stations
- Install Additional 10 New Charging Stations

Construction Cost

- \$922k



Taxiway D Rehabilitation (2021)

Rationale

- Extend existing pavement life until full reconstruction is scheduled

Scope

- Asphalt Concrete (AC) mill-and-overlay
- Limited pavement removal – per Airfield Geometry Study (AGS) recommendations

Construction Cost

- \$6.5M



Future Construction



long beach
airport

where the going is easy®

Concourse Carpet Replacement (2020)

Rationale

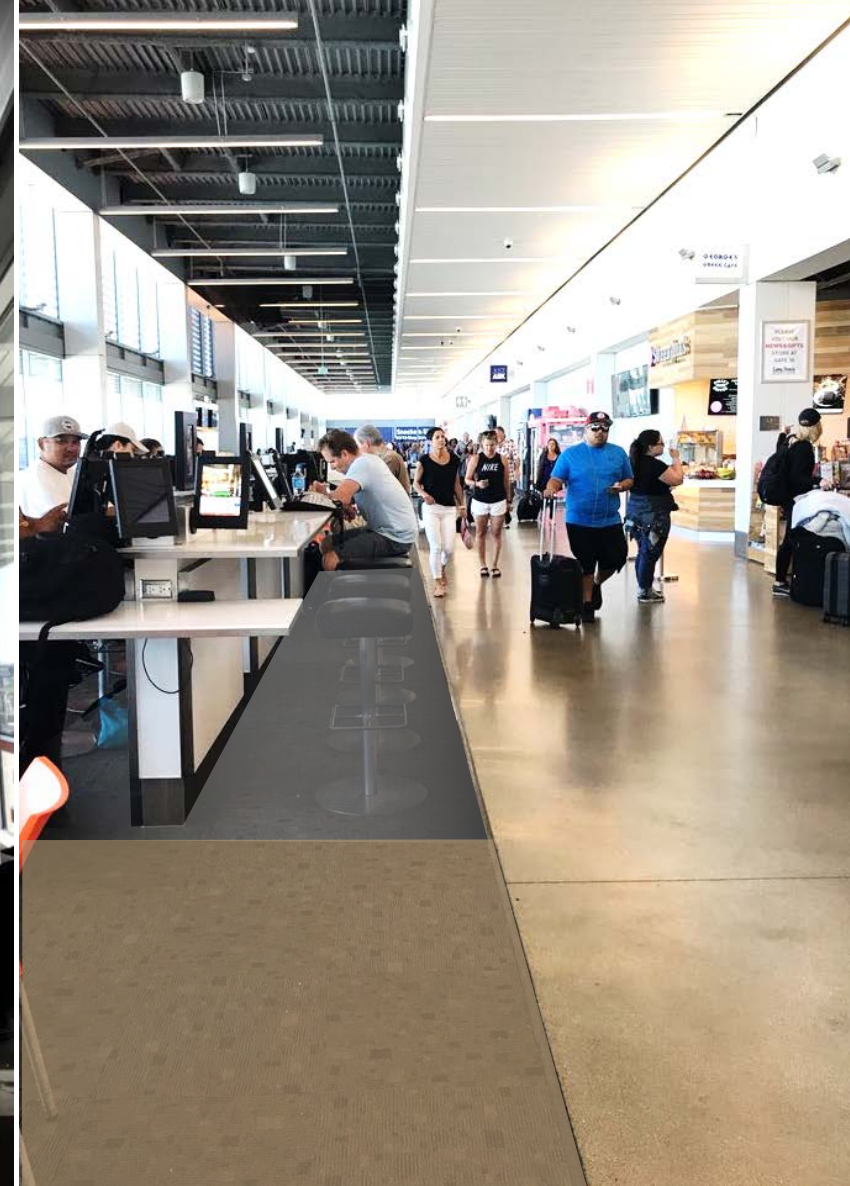
- Excessive wear and tear of existing carpet

Scope

- Replace existing carpet in Concourse
- Re-polish existing concrete

Construction Cost

- \$300k



Runway 12-30 Electrical Circuit Replacement (2020)

Rationale

- Existing electrical circuit well exceeded its useful life causing deterioration of resistance values

Scope

- Replace 100,000 ft of electrical circuit wiring for runway edge lights

Estimated Construction Cost

- \$1M-\$1.5M



Long Beach Airport

Pavement Management System (2020)

Rationale

- To evaluate, maintain and prioritize airfield pavement projects

Scope

- Perform pavement evaluation to determine existing and predicted PCI and pavement maintenance and rehabilitation (M&R) plan

Estimated Survey Cost

- \$300k



Taxiway B Construction (2021)

Rationale

- Taxiway B primarily has reached the end of its useful service life

Scope

- Relocation and Construction of Taxiway B at the location of former Runway 16R-34L

Estimated Construction Cost

- \$5M-\$7M



Taxiway L Reconstruction (2022)

Rationale

- Reconstruct deteriorating pavement

Scope

- Reconstruct TWY L in PCC and relocate connector TWY L3 away from tunnel

Estimated Construction Cost

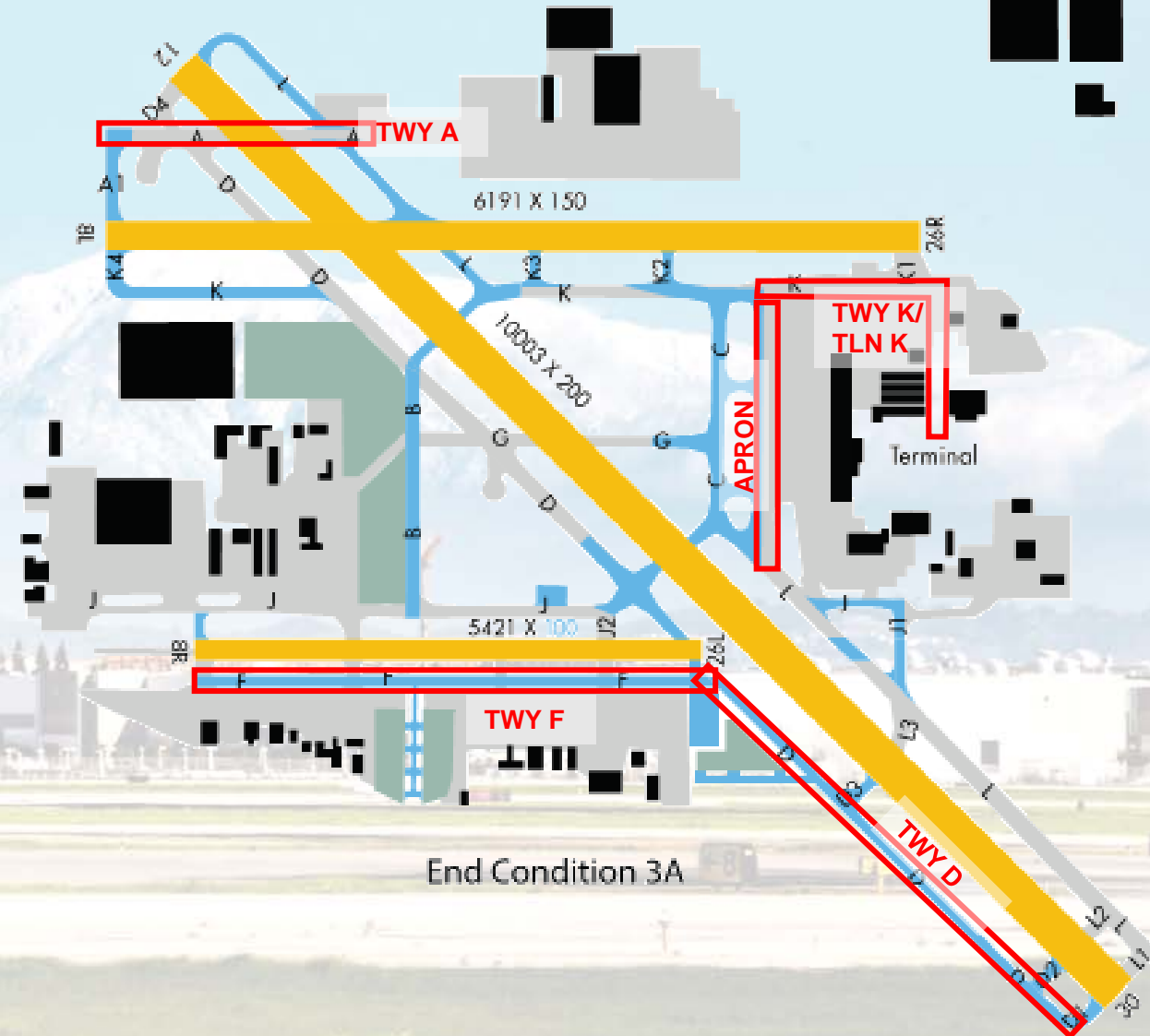
- \$30M-\$35M



Long Beach Airport

Upcoming Airfield Projects 2025-2029

- Taxiway F Reconstruction
- Taxiway A Reconstruction
- Taxiway K Improvements
- Apron Rehabilitation
- Taxiway D Reconstruction



Terminal Area Improvement Program



long beach
airport

where the going is easy®

Terminal Area Improvement Program – Phase I



- Completed in 2012
- Passenger Concourse
- Security Screening Area
- Parking Structure B
- Total Cost over \$100M



Existing Condition



Phase II Improvements



New Ticketing Lobby



Size ~16,000 SF

Airline Ticket Offices

Pre-security Restrooms

Common Use Ticketing Equipment

Checked Baggage Inspection System (CBIS)



Proposed Facility : 6,200 SF

Connectivity with new ticketing lobby and baggage makeup

Compliant with current TSA guideline, more ergonomic, allow for network connectivity, optimize TSA staffing capabilities

Historic Terminal

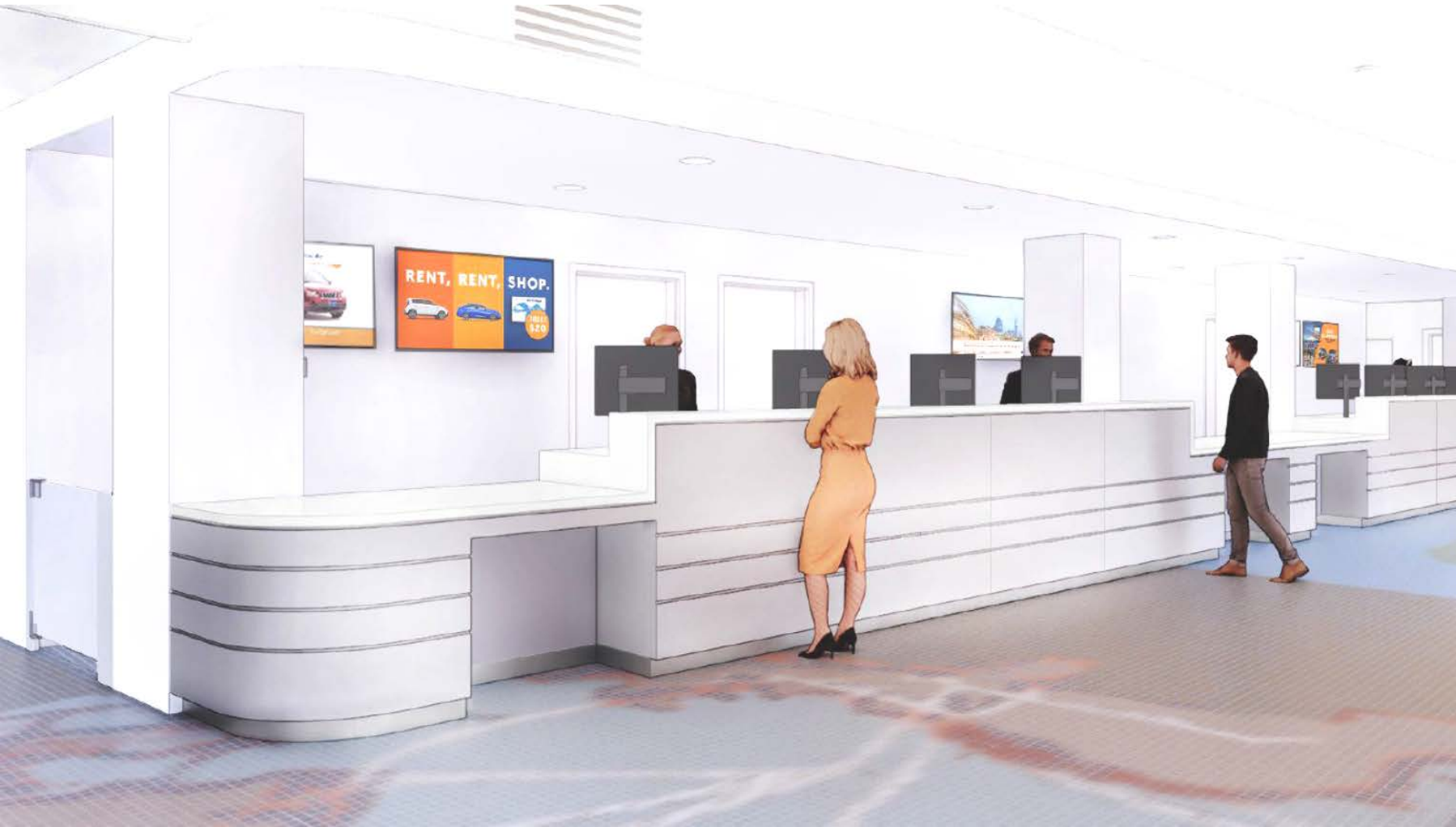


Existing



Future View
from Passenger
Concourse

Rental Car Customer Service Facility



Baggage Claim and Meet & Greet Plaza



- Sloped Bed Carousel
- Baggage Service Offices

Ground Transportation Improvement



Consolidated Ground Transportation Area:

- Shuttle, Taxis, Limos, Rideshares, Valet

Pedestrian Corridor from Parking Structure to Terminal



long beach airport


Thank you

