

San Diego County Regional Airport Authority

Airport Development Plan

Dennis Probst
VP & Chief Development Officer
Planning & Environmental Affairs

Construction Network

November 4, 2020



About SAN



- SAN has served the air transportation needs of the San Diego region since 1928
- Total operation sits on 661 acres
- Single runway
- 51 gates
- Southwest, Alaska, Delta, United and American are largest carriers
- Pre-COVID-19:
 - On average, 68,000 total passengers a day
 - 550 daily arrivals and departures

In 2019, SAN served **25 million** passengers...

...including over **1 million** international passengers...



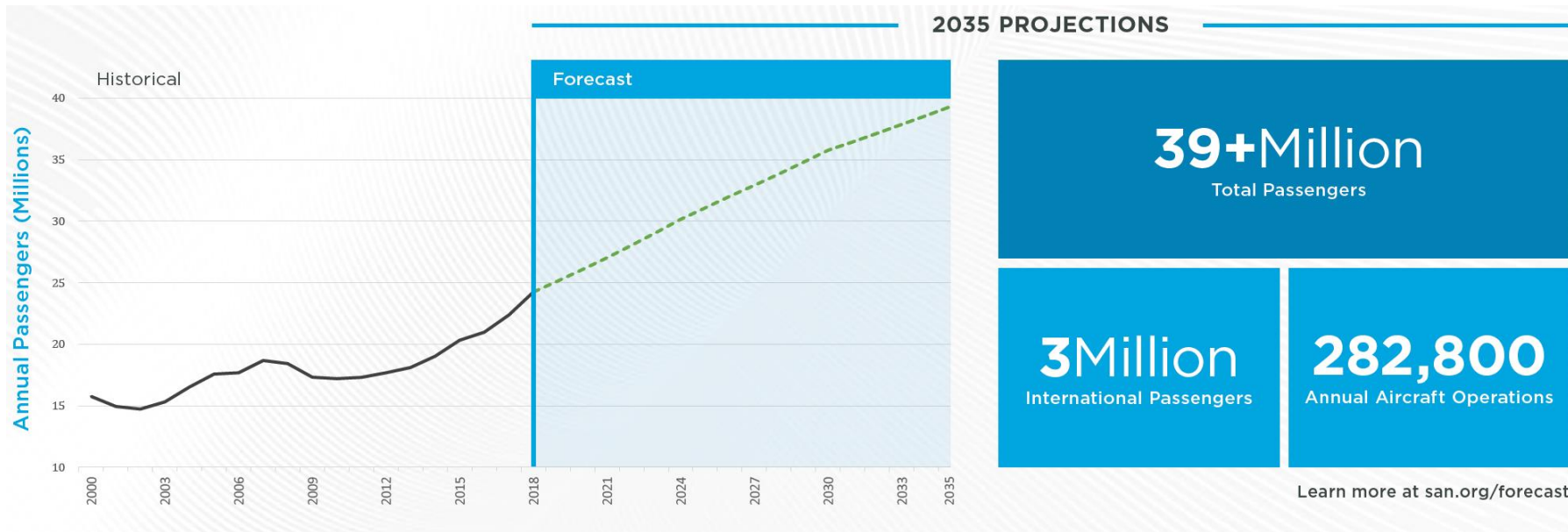
Reason For Travel

Leisure vs. Business

- 50% travel for leisure; 50% travel for business
- Pre-COVID, total direct visitor spending was estimated at \$11.5 billion annually



Accommodating Future Growth



Impacts COVID-19

There are many industry predictions however, most agree it will take two to three years to see a full recovery. IATA has predicted that domestic travel will recover more quickly than international travel.

US Bureau of Transportation recently ranked SAN at #13 among airports across the country that are recovering the fastest from the pandemic travel slump.



Passenger traffic is running at about 30 percent over last year.



The short-term expectation for 2021 is there will likely be a 30-to-40 percent decline in travel over normal levels.



The Authority has placed more than \$220 million of airport Capital Improvement Projects on hold.

Let's Go Safely

Campaign Overview and Goal:

In June, SAN launched Phase 1 of a branded Recovery Campaign with the goal of raising awareness of our safety measures and reassuring essential travelers that SAN is safe.

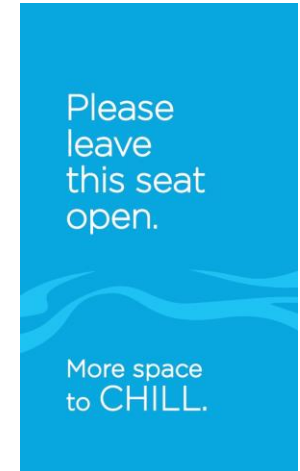
Campaign Creative:

The campaign appeared in-terminal, on digital, through social media, and via external relations.

Creative assets include social distancing markers, mask/safety signage, infographic, one-pager, landing page, blog post, social posts, and press release.

What's Next:

SAN is now developing Phase 2 of the Recovery Campaign, aimed at welcoming passengers back to SAN through creating an emotional desire to travel again.






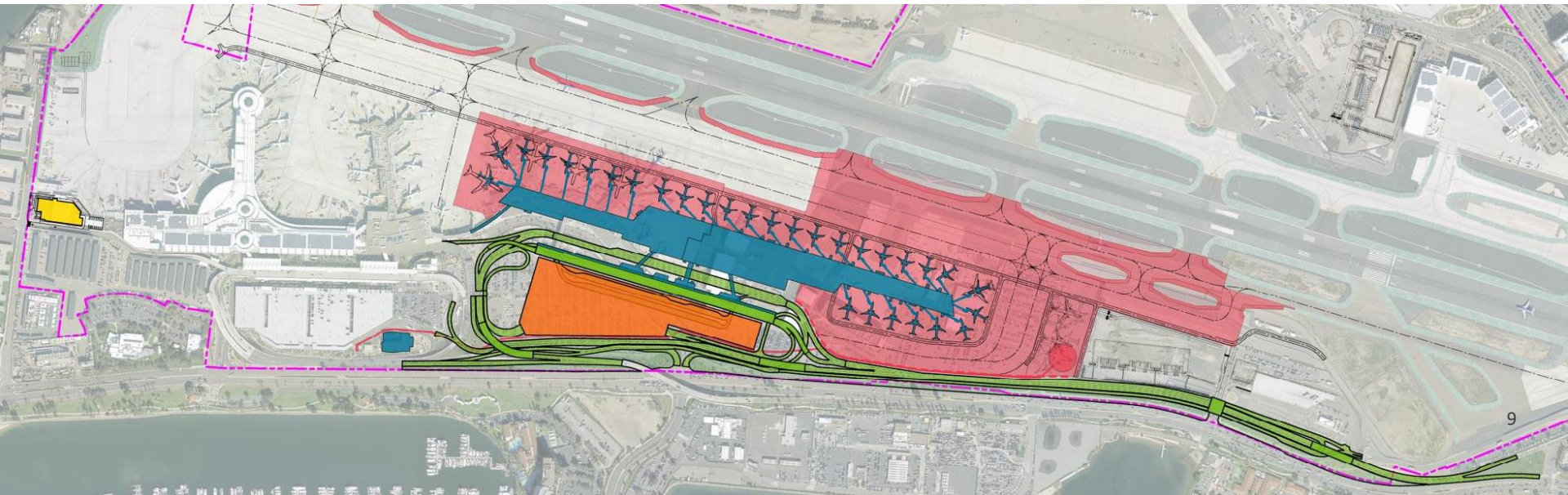
The ADP-Coordinating with stakeholders..



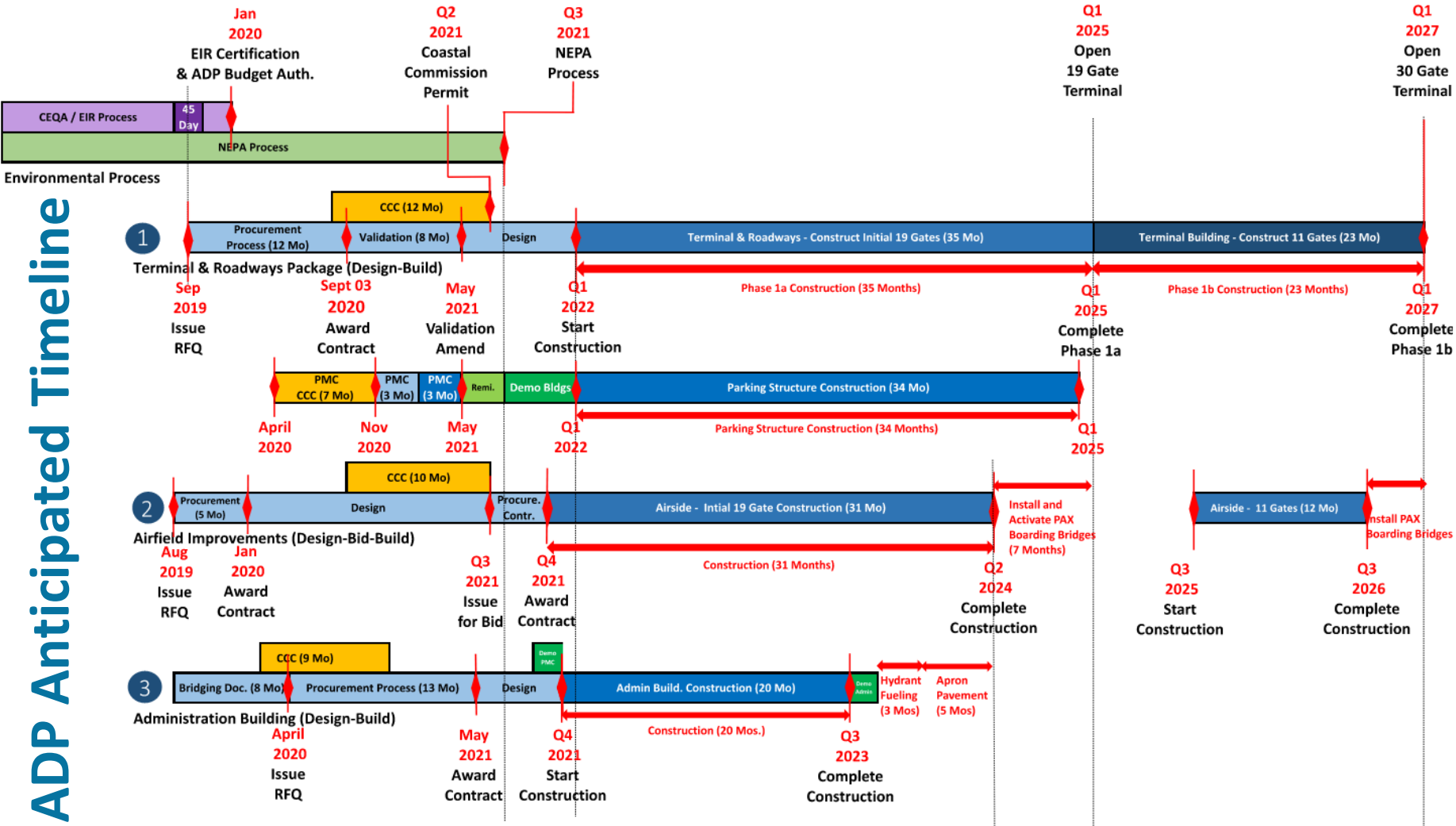
- Individual meetings with public agencies & other organizations
- SANDAG's Airport Connectivity Subcommittee & Working Groups
 - Planning
 - Modeling
 - Legal
 - Communications
 - Government Affairs
- Over 100 meetings total since October

Alternative 4 - Overall Project Scope

-  Package 1 – Terminal and Roadways
-  Package 2 – Airside Improvements
-  Package 3 – Administration Building



ADP Anticipated Timeline



Now let's talk about replacing Terminal 1

Terminal 1
Exterior



Terminal 1
Interior

Terminal 2
Exterior



Terminal 2
Interior

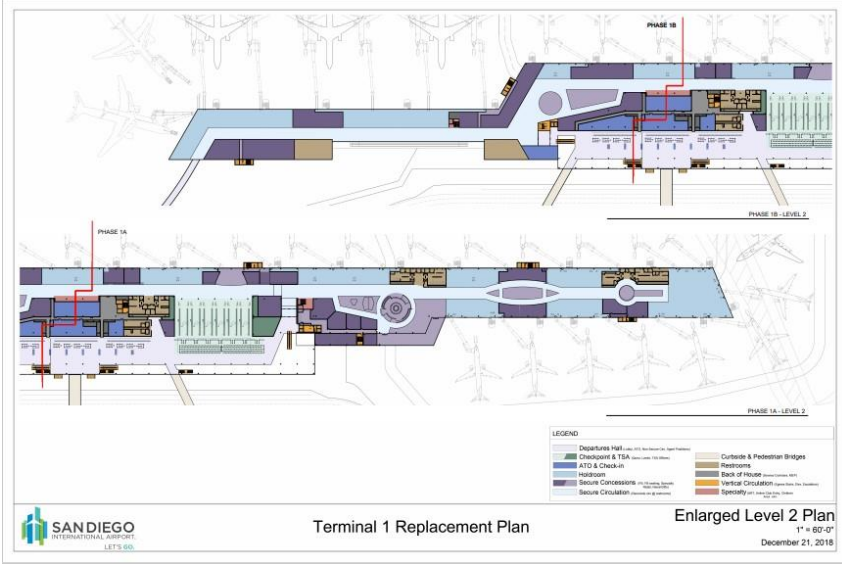
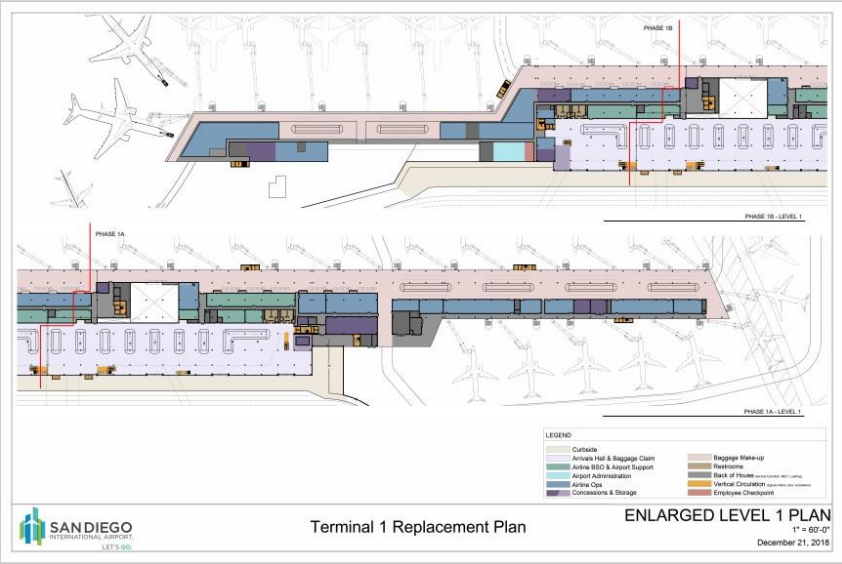
Inside Terminal 1 Renderings



Outside Terminal 1 Renderings



Terminal 1 Floorplan Renderings



Airport Development Plan (ADP) Components



● Airfield ● Terminal ● Ground Transportation ● Transit Access

ITC = Intermodal Transit Center

Streamlining Mobility & Access



Transportation and Transit



Other Capital Improvements Projects



SAN DIEGO
INTERNATIONAL AIRPORT
LET'S GO.

Airport Support Facilities (ASF) Design-Build

Approved Project Budget: \$171.6 M

Completion Date: December 2020

Project Scope

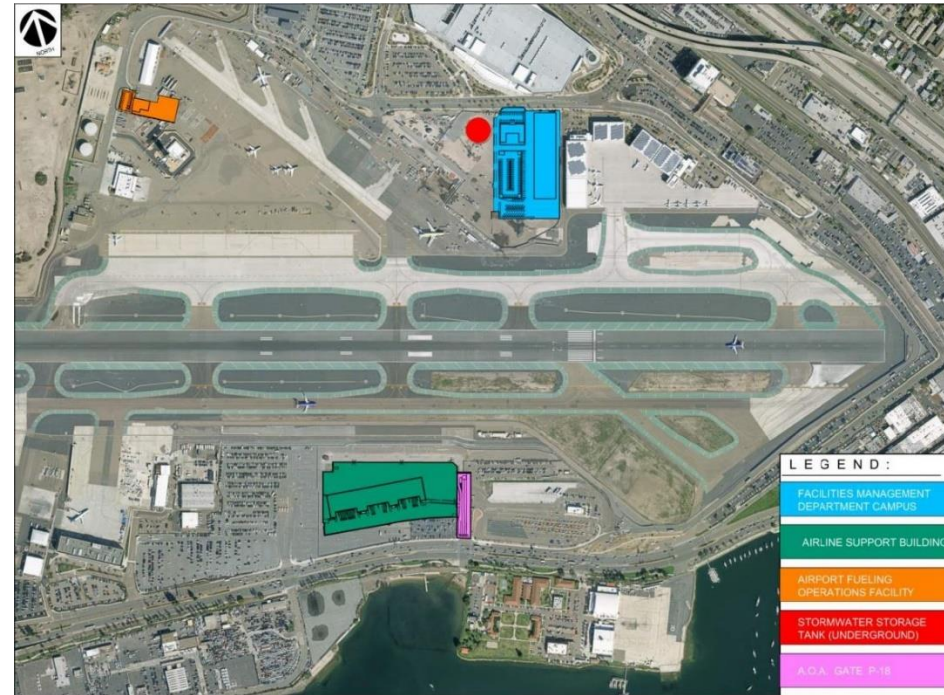
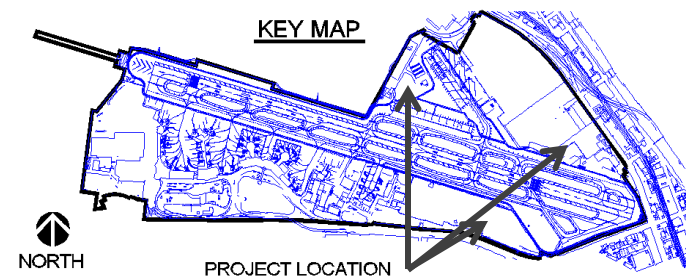
- Relocate Facilities Management Department (FMD) Campus
- Construct Storm Water Capture and Reuse Facilities, including a 3 MG Underground Concrete Storage Tank & Infiltration Basins
- Relocate Airport Fueling Operations (AFO) Facility
- Relocate/Consolidate Airline Support Buildings & AOA Gate P-18

Anticipated Major Milestones

- **FMD Campus**– Construction Substantially Completed, June 11, 2020
- **AFO Building**– Construction Substantially Completed: July 20, 2020
- **Storm Water Storage Tank**– Construction Complete: September 2020
- **ASB Base Building**– Construction Complete: December 2020

Project Status

- **FMD Campus** – Project is Substantially Complete and received the Certificate of Occupancy from the City on 6/11. FMD staff has moved into their new Administration Building, and the move into the Shops and Warehouse building has also been completed.
- **Storm Water Storage Tank** – Complete
- **AFO** – Building is Substantially Complete
- **ASB** – Building exterior is nearly complete, TI's scheduled to begin December 2020



FMD Campus and Procurement Warehouse Construction Progress



Construction Progress as of January
2020



Construction Progress as of
May 2020

3MG Underground Storm Water Cistern Construction Progress



Construction progress as of
January, 2020



Construction progress as
of May, 2020

3MG Underground Storm Water Cistern

Construction Progress



Ready to pour final section of the floor slab



Work begins on the wall forms prior to concrete pours



Tons (literally) of steel rebar being placed to allow concrete walls to withstand external pressure without cracking

Airport Fueling Operations (AFO) Construction Progress



Aerial View of AFO site as of
May 2020



Finishing up Glazing and
CMU Block Sealant on
Administrative Portion of
Building



Installation of Roof Deck in
Fuel Truck Maintenance
Bays Area

New Jet Fuel Storage Tanks



Airline Support Building (ASB) Construction Progress



Questions?

**Green
Build
Terminal 2
Expansion
(2013)**



**Parking
Plaza
(May 2018)**

**Rental Car
Center
(2016)**



**International
Arrivals
Facility
(June 2018)**

