



# Metrolink Capital Program

April 14, 2021

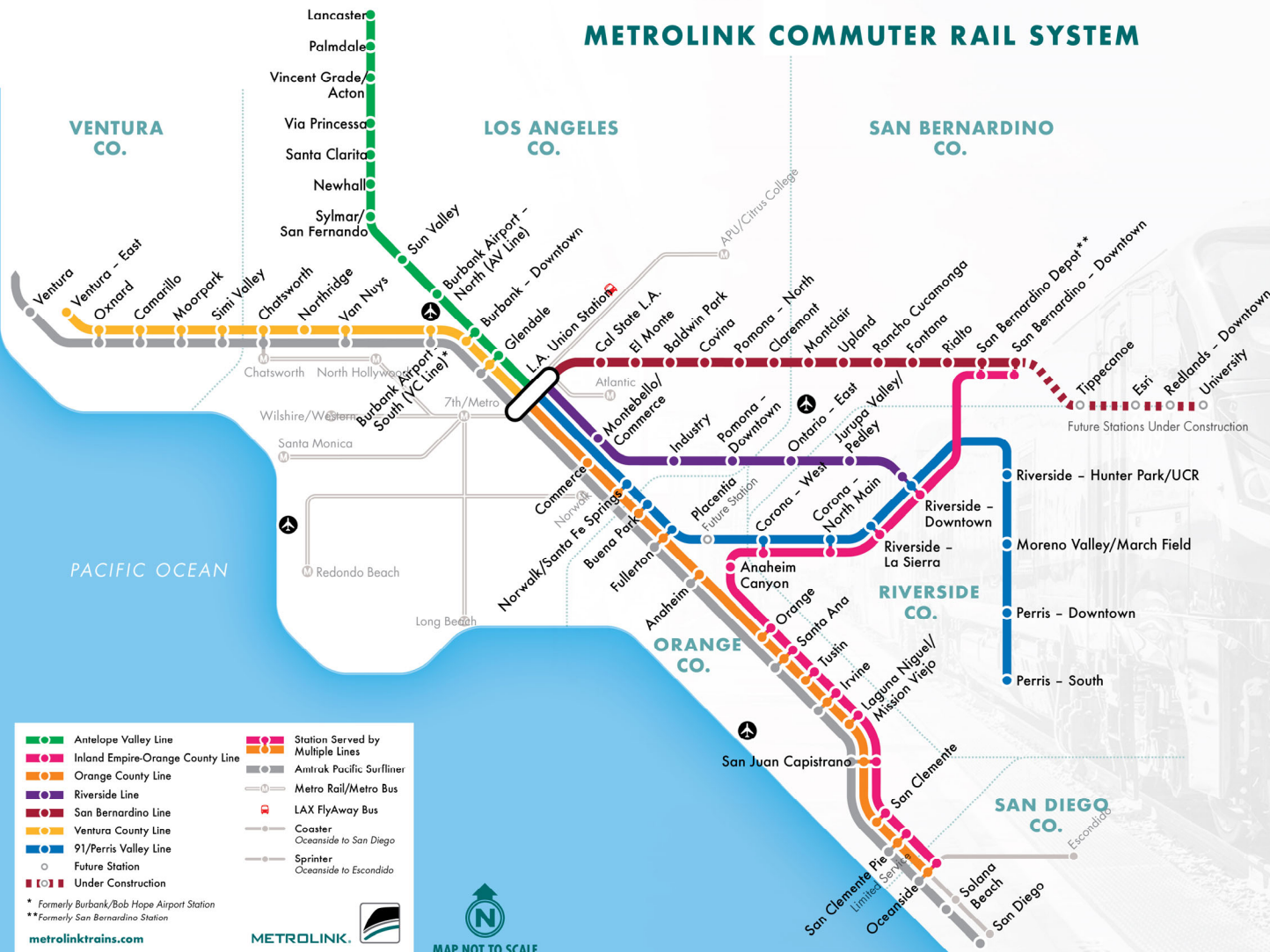




# Metrolink Connects Southern California

## 29<sup>th</sup> Year of Operations

### METROLINK COMMUTER RAIL SYSTEM



6

Counties Served

7

Lines

63

Stations

538

Route Miles

metrolinktrains.com

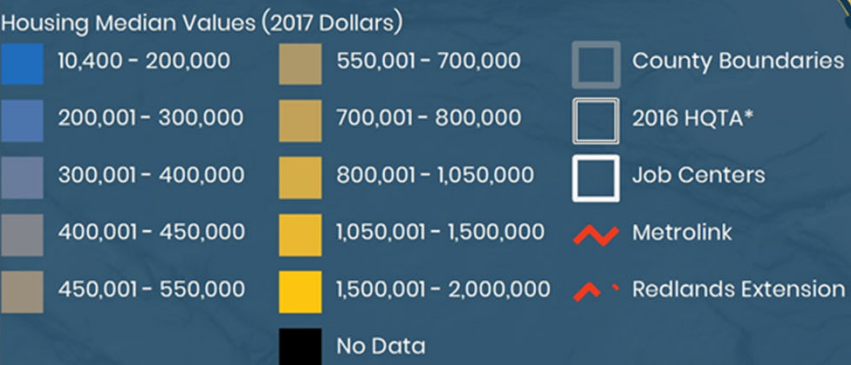
METROLINK



Updated September 2019 subject to change



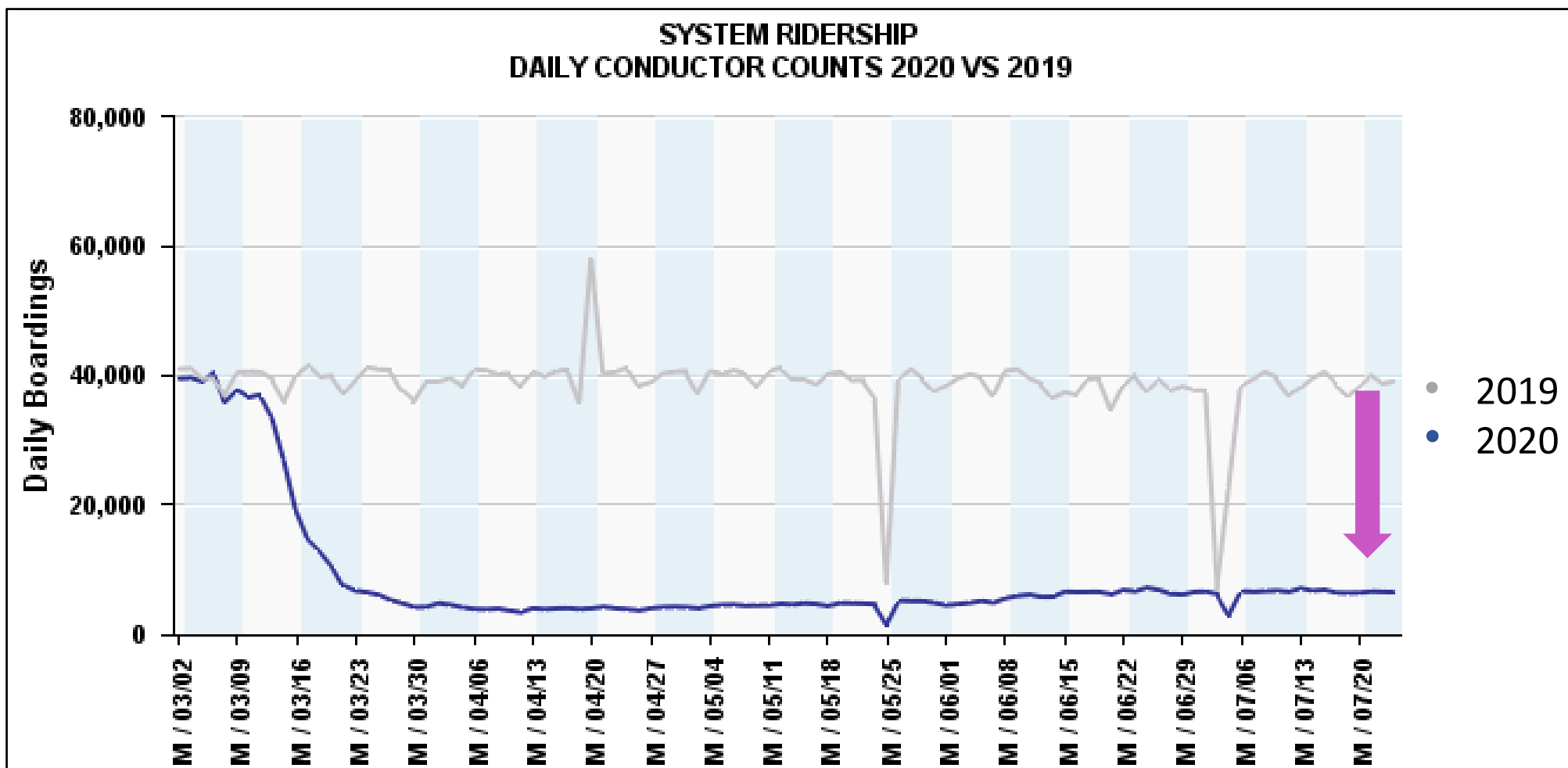
# Metrolink: Connecting Affordable Housing Job Centers



\*Note: This is the draft High Quality Transit Areas (HQTAs) in the SCAG Region for the year 2016, updated as of February 2020. Please note that the base year transit network for Connect SoCal is based primarily on data for the year 2016. The inventory of 2016 major transit stops and HQTAs is therefore only a snapshot in time as of 2016, and does not reflect the existing levels of transit service for any other timeframe. Transit agencies make adjustments to bus service on a regular basis, therefore, local jurisdictions should consult with the appropriate transit provider(s) to obtain the latest information on transit routes, stop locations, and service intervals. This data is intended for planning purposes only, and SCAG shall incur no responsibility or liability as to the completeness, currentness, or accuracy of this information. SCAG assumes no responsibility arising from use of this information by individuals, businesses, or other public entities. The information is provided with no warranty of any kind, expressed or implied, including but not limited to the implied warranties of merchantability and fitness for a particular purpose.

Source: SCAG, ACS 2013-2017 5-Year Estimates

# Current Systemwide Ridership Down approximately 83%





# Rider Survey



## RESPONDENT DISTRIBUTION

### Online Survey

APRIL 23-28



Male – 46.3%

Female – 52.9%

Other – 0.8%

Home County	Percent of Responses
Los Angeles County	34%
Orange County	18%
San Bernardino County	14%
Riverside County	13%
Ventura County	3%
San Diego County	3%
Other County or not specified	14%

11,069

responses received

Promoted by: Email Social Media





# Who's Still Riding?

## Serving our Essential Employees



**71% of current riders describe themselves as Essential Workers**

*You indicated that you are still riding Metrolink.  
What describes your current use of Metrolink?  
(multiple responses possible)*



**METROLINK.**

**SMARTER. BETTER. ESSENTIAL.**



# Future Ridership



## Most Riders Likely to Ride Again

- 81% of Respondents say they Would Return to Metrolink

## FUTURE RIDERSHIP

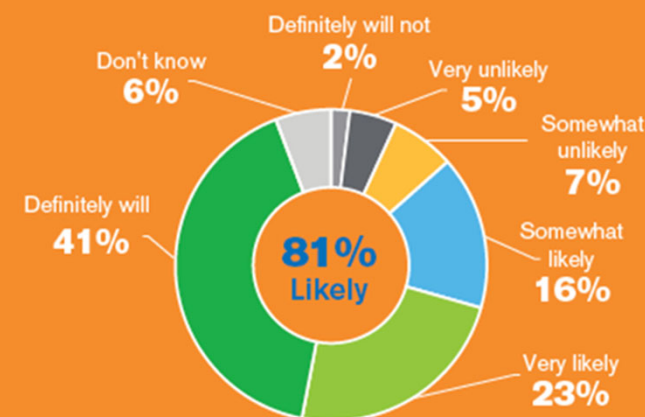
What our customers are telling us for the recovery.



**81%** of all riders are likely to return to Metrolink — but not all at once. **29%** indicate they will return as soon as the stay-at-home order is lifted. Some plan to wait for schools to re-open or for a vaccine or treatment to be available.

Most riders **likely** to ride again

Once the stay-at-home order is lifted, how likely are you to ride Metrolink again?



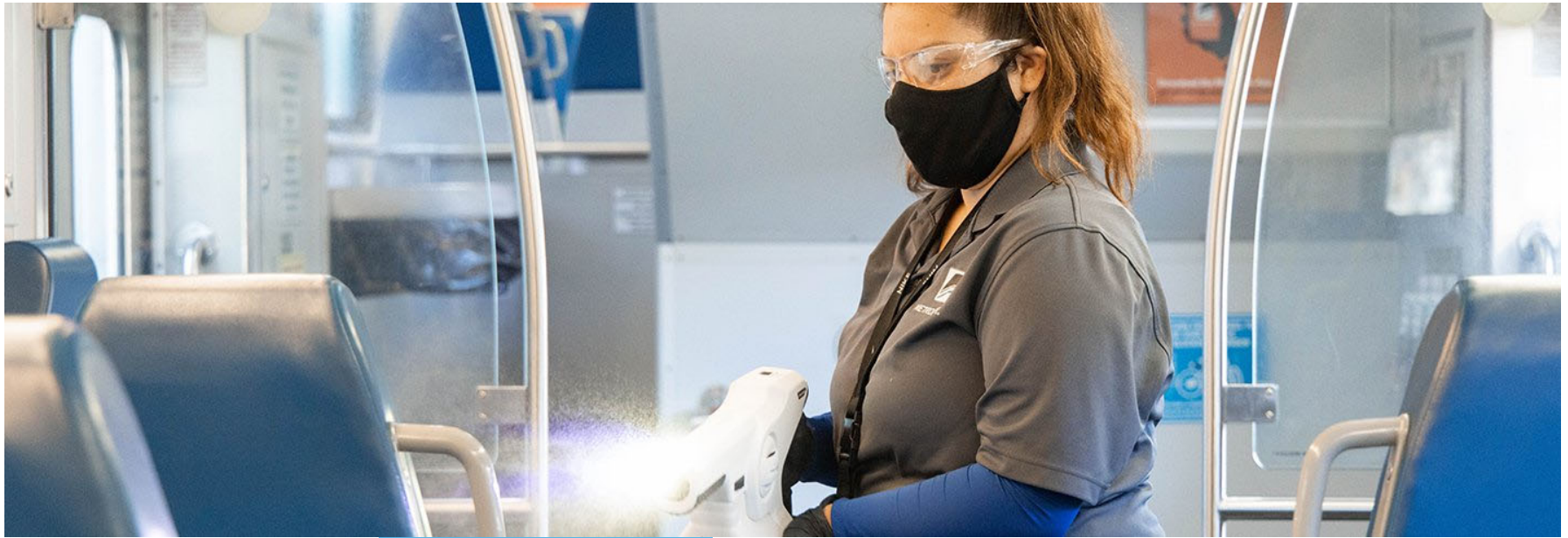


# Framework to Restore Service & Operations





# New Safety Protocols & Clean Care Crews





# New Fares Reflect Riders' Changing Needs

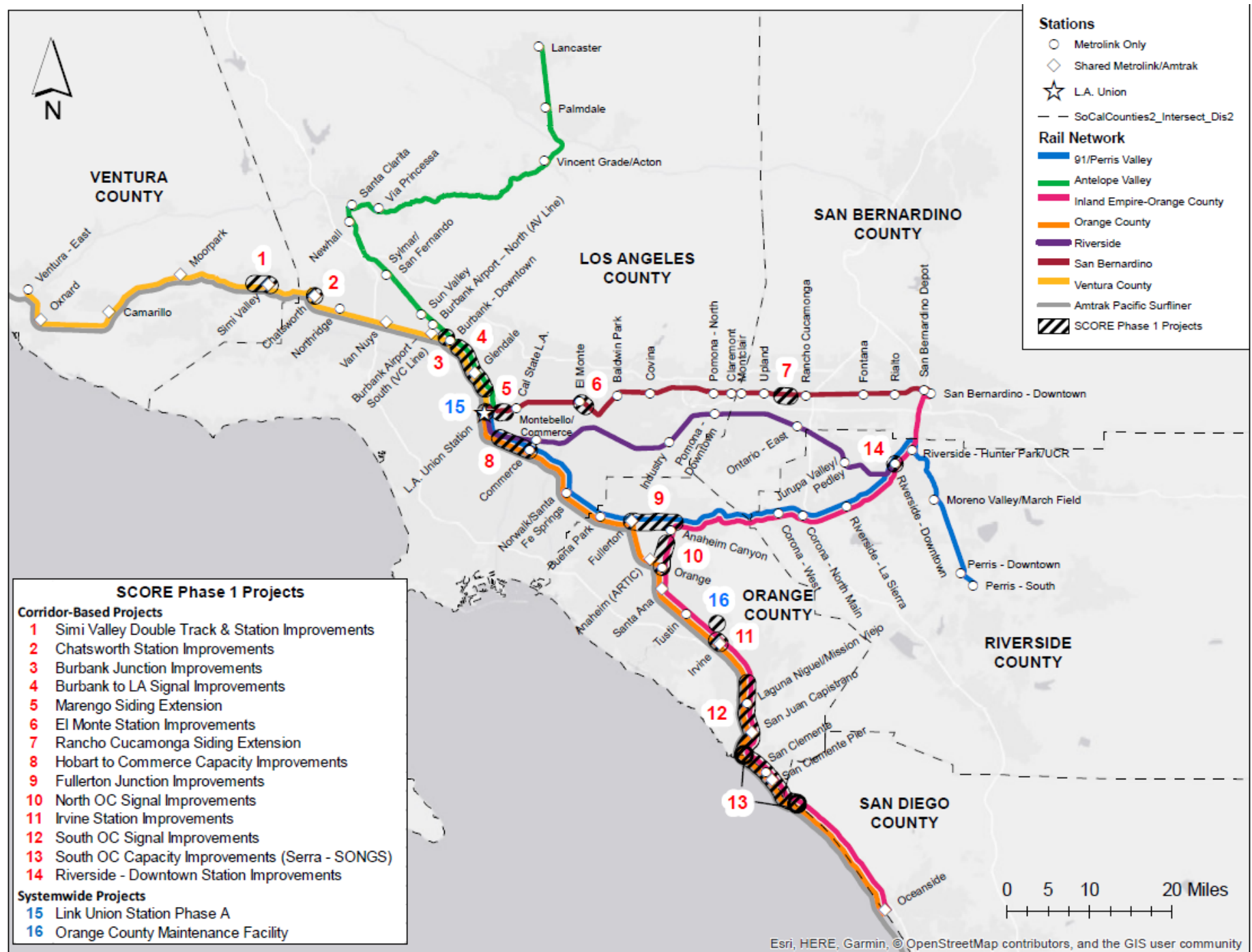


# Future-Proof Operations

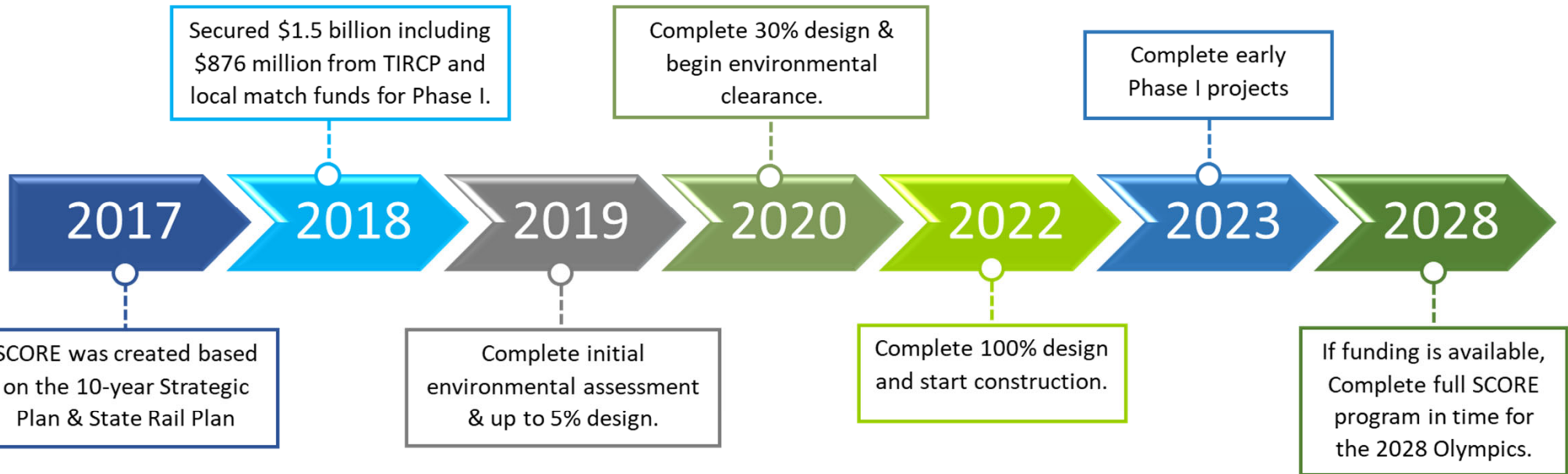




# SCORE Phase 1 Projects



# SCORE Phase 1 Timeline



\* Individual projects will start and complete construction at different times.



## Metrolink's Economic Potential

Metrolink has an ambitious plan to upgrade its system so that the region gets more and just in time for the 2028 Olympic and Paralympic Games – the Southern California Optimized Rail Expansion program or **SCORE**. The Los Angeles Economic Development Corporation (LAEDC)<sup>3</sup> was commissioned to produce a study assessing the impact of the construction investment of the **SCORE** program. The benefits from **SCORE** will make the region increasingly attractive for the millions projected to arrive in SoCal in 2028 and create regional prosperity in the decades to come.



## Five County Region Relative Job Gains by Industry, SCORE 2050



## Metrolink SCORE Program Five County Benefit

Creates  
**113,100\***  
jobs before the  
2028 Olympic and  
Paralympic Games



**1.36 million jobs** by 2050  
for an average of  
**42,600 jobs**  
annually\*



Generates  
**\$683.8 billion**  
in gross regional product  
throughout the Metrolink  
six-county service area

Adds more than  
**\$1.17 trillion**  
to Southern California's economy

From 2023-2078  
eliminates **3.4 billion**  
vehicle miles traveled  
& reduces **51.7 million**  
metric tons of greenhouse gas emissions

New service attracts  
**2.3 million pedestrians &  
1.3 million bicyclists** each year

\* Direct construction jobs in all years until 2028  
\* All jobs created – direct, indirect and induced – in all years until 2050



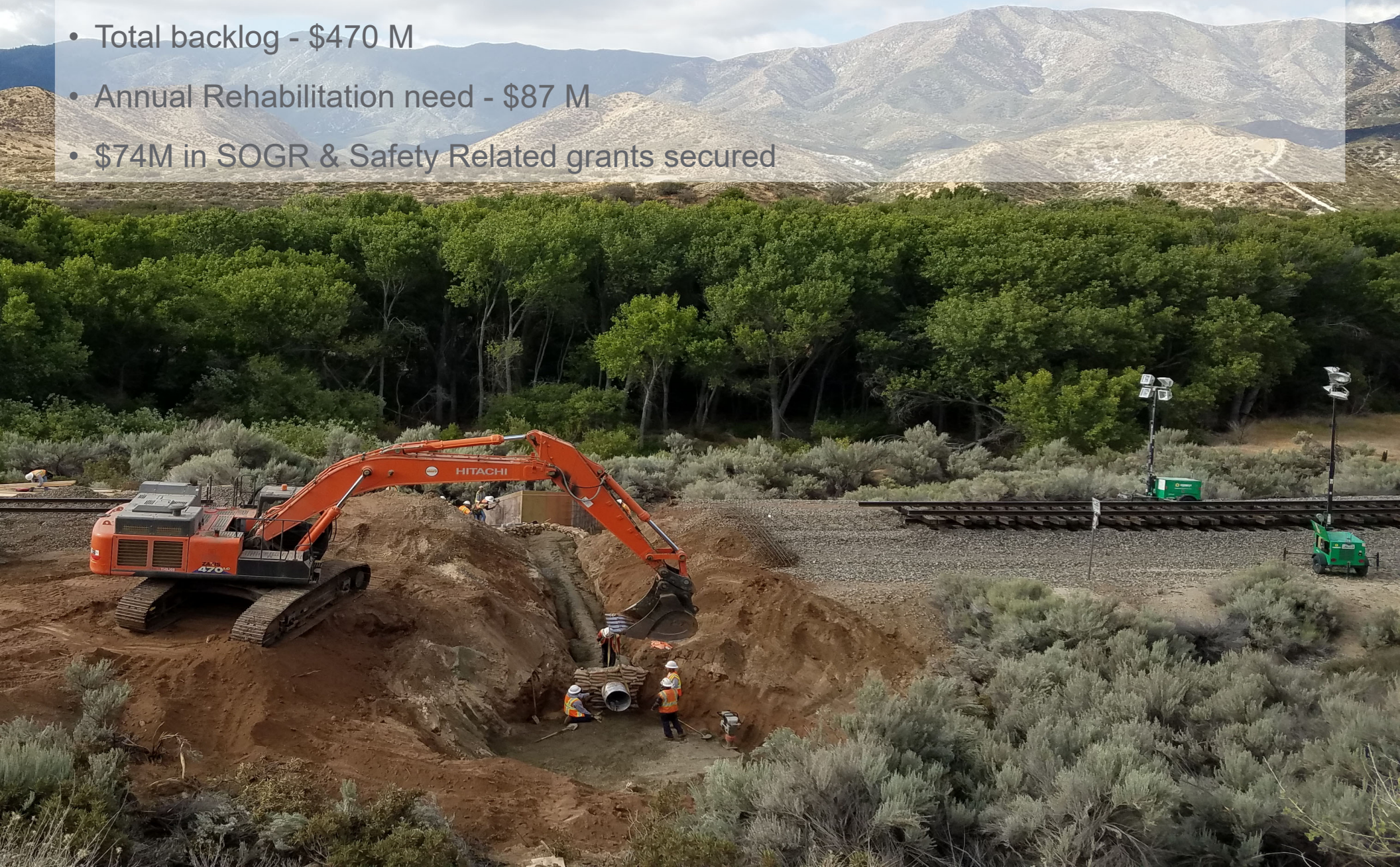
## SOUTH CALIFORNIA TO LAS VEGAS





# Rehabilitation Program

- Metrolink Rehabilitation Plan – Condition, Age, and Performance based assessment
- Total backlog - \$470 M
- Annual Rehabilitation need - \$87 M
- \$74M in SOGR & Safety Related grants secured





# Upcoming Procurements

Date	Title
Apr '21	CTO – AVL Service Improvements Oversight
May '21	IFB – SCORE Burbank Speed Improvements
May '21	CTO – Devonshire Grade Crossing Improvements
June '21	IFB – SCORE Avery to Songs Signal Improvements
June '21	CTO – Cogswell Ave. Grade Crossing Improvements
July '21	RFP – On-call Project Controls Consultant
Nov '21	IFB – Central Maintenance Facility Upgrades
Jan '22	IFB – SCORE Chatsworth Station Improvements
May '22	IFB – SCORE El Monte Siding
May '22	IFB – SCORE Marengo Siding
May '22	IFB – SCORE Rancho Siding
Late –'22	IFB – San Juan Creek Bridge Replacement
Summer – '23	IFB – SCORE Serra Siding
Summer – '23	IFB – SCORE Simi Valley Siding





# Doing Business with Metrolink

[metrolinktrains.com/procurement](http://metrolinktrains.com/procurement)





# Thank You



**METROLINK®**

**SMARTER. BETTER. ESSENTIAL.**