



# Construction Network: EMWD Capital Improvement Program

Bruce Mitzel  
April 20, 2021

# Overview

---



ESTABLISHED IN  
**1950**



POPULATION:

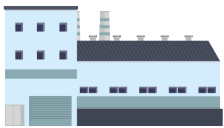
**850,000+**



SERVES:



**WATER / WASTEWATER / RECYCLED**



**WHOLESALE**



**RETAIL**



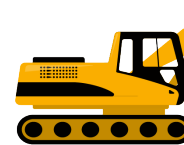
**555**

**SQUARE MILE  
SERVICE AREA**

ALMOST

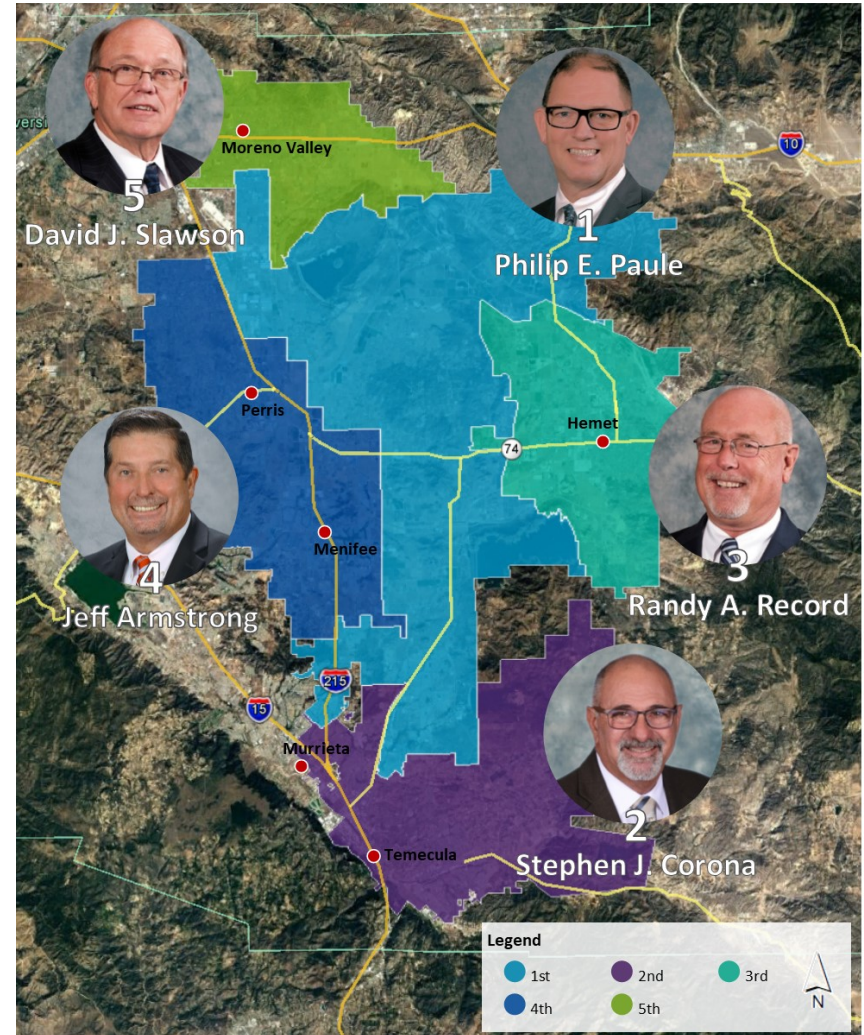
**38%**

**CURRENTLY  
BUILT OUT**



# About EMWD

- Five division publicly-elected Board of Directors
- More than 600 employees
- Annual operating budget of \$324 million for FY 2020-21
- Five-year capital program of \$545 million for FYE 2021 to FYE 2025
  - More than 170 active capital projects
- Sixth largest public water utility in California



# Core Services



## DRINKING WATER

- Approximately 156,000 accounts
  - 90,998 acre-feet sold in FYE 2020
  - Imported water from State Water Project and Colorado River Aqueduct
  - Groundwater wells
  - Menifee and Perris brackish desalters



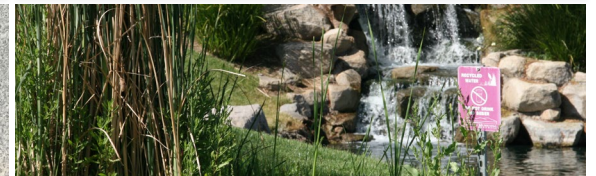
## WASTEWATER

- Approximately 246,000 accounts
  - Four operating regional water reclamation facilities
  - 69 million gallons per day capacity
  - 46 million gallons per day average



## RECYCLED WATER

- Approximately 626 accounts
  - 29,191 acre-feet sold in FYE 2020
  - Extensive agricultural irrigation, municipal irrigation, and environmental uses



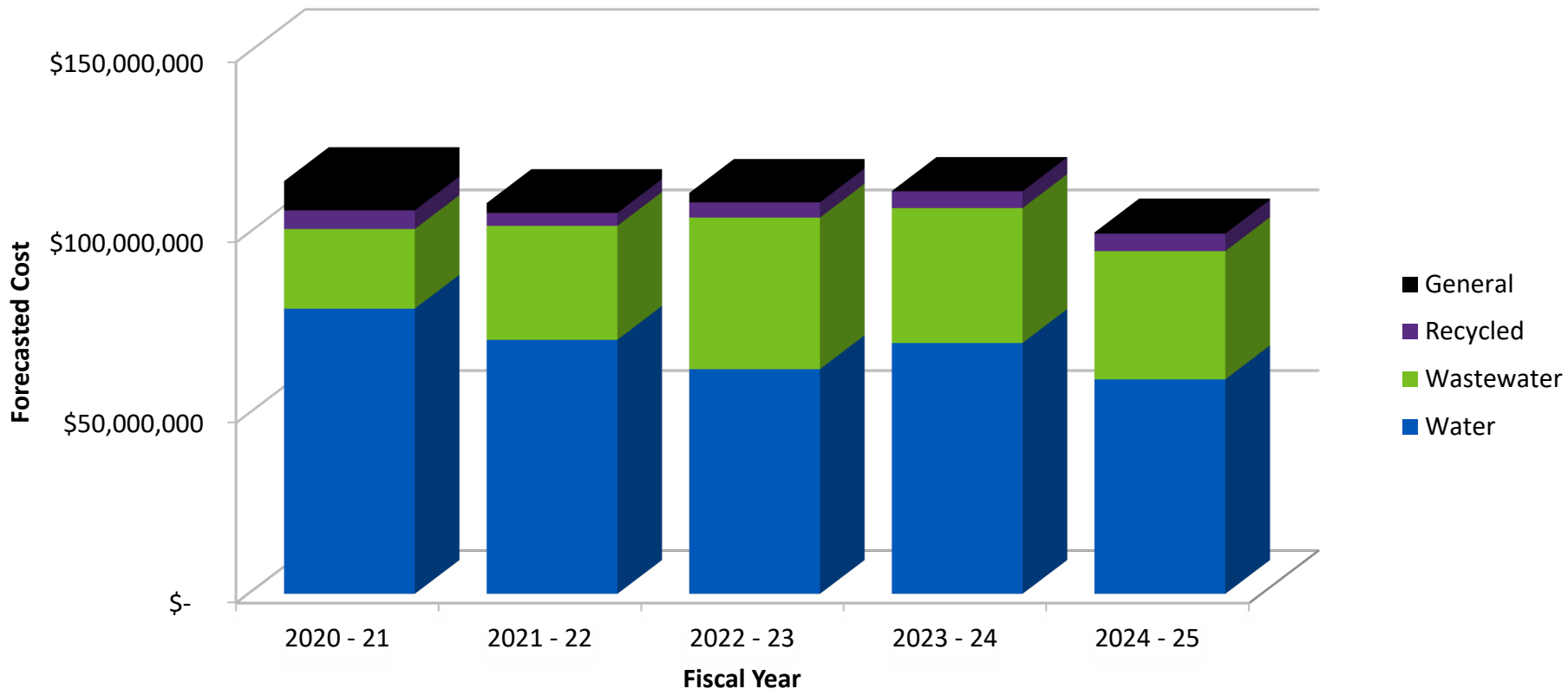
# 2020-2025 Capital Improvement Program

---

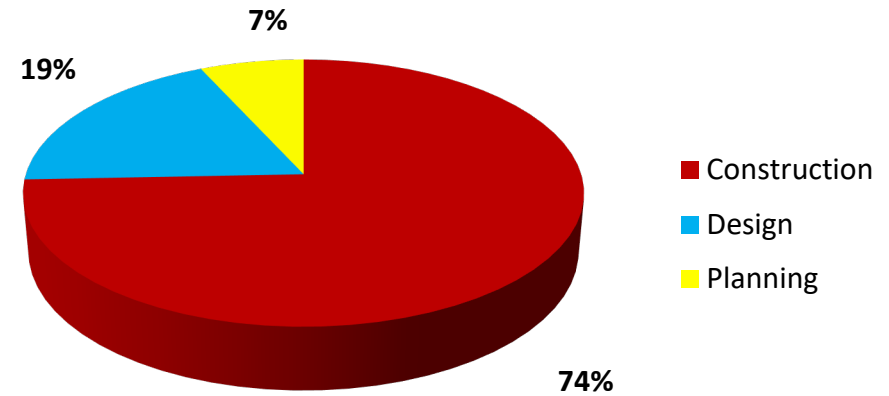
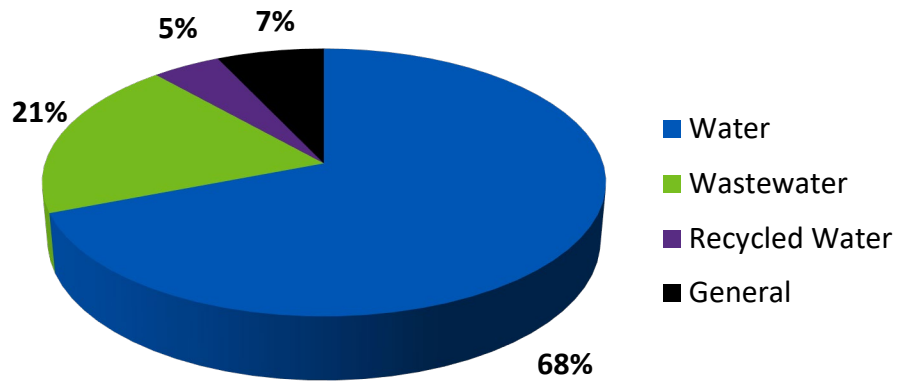


# 2020-2025 Capital Improvement Program

- Total budget of \$545M with estimated external funding of \$96M
- Water system investments average \$68M/year over the five-year period



# FY 2020/ 2021 Capital Improvement Program

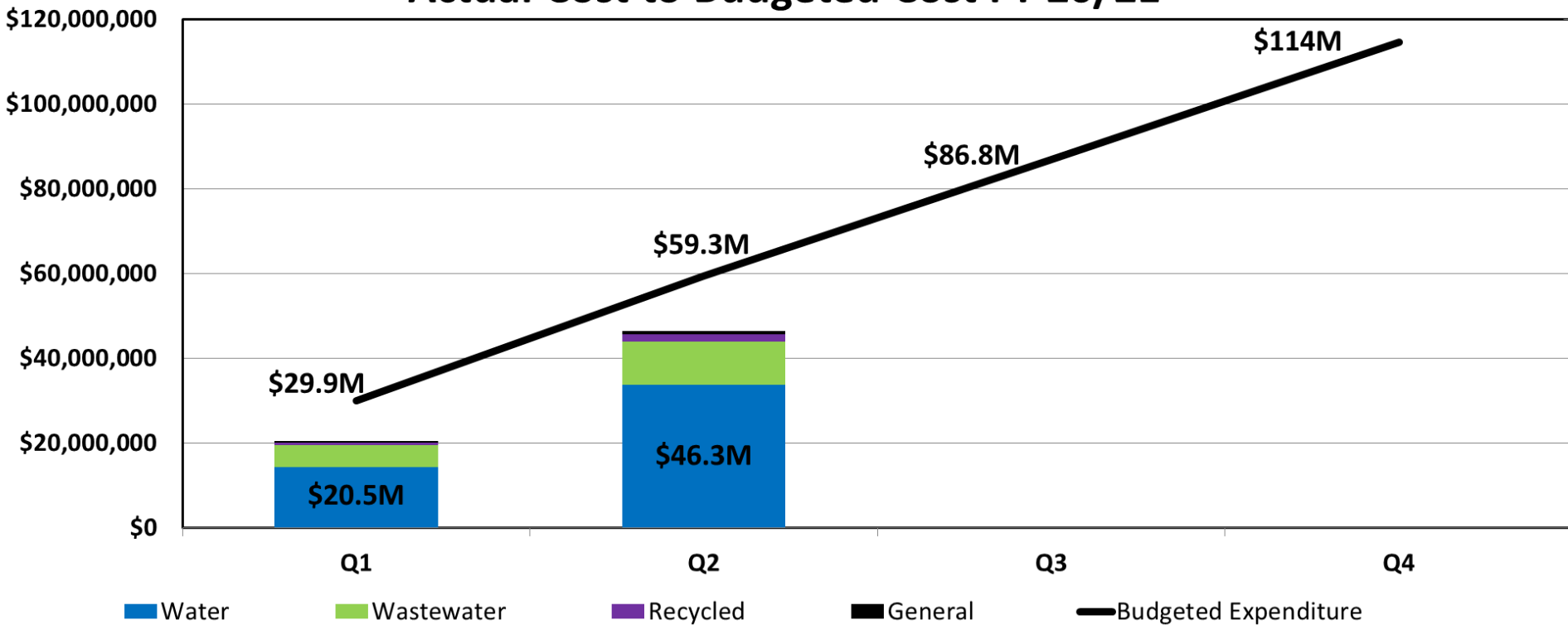


PROJECT TYPE	COUNT	2020 – 21 (\$ Million)
WATER	87	\$79 Mil
WASTEWATER	59	\$22 Mil
RECYCLED	14	\$5 Mil
GENERAL	9	\$8 Mil
TOTAL	169	\$114 Mil



# 2020-21 Q1 & Q2 Capital Improvement Program Performance

## Actual Cost to Budgeted Cost FY 20/21



\* Grant Reimbursements totaled \$10.9 M for an Out-of-Pocket total of \$35.4 M

# Construction Phase Services

---

- Prime/General Contractor
- Subcontractor/Supplier
- Specialty Inspection
- Geotechnical and Materials Testing
- Survey Staking
- Environmental and Regulatory Compliance
- Labor Compliance
- Partnering Facilitators



# Upcoming Construction Projects

---

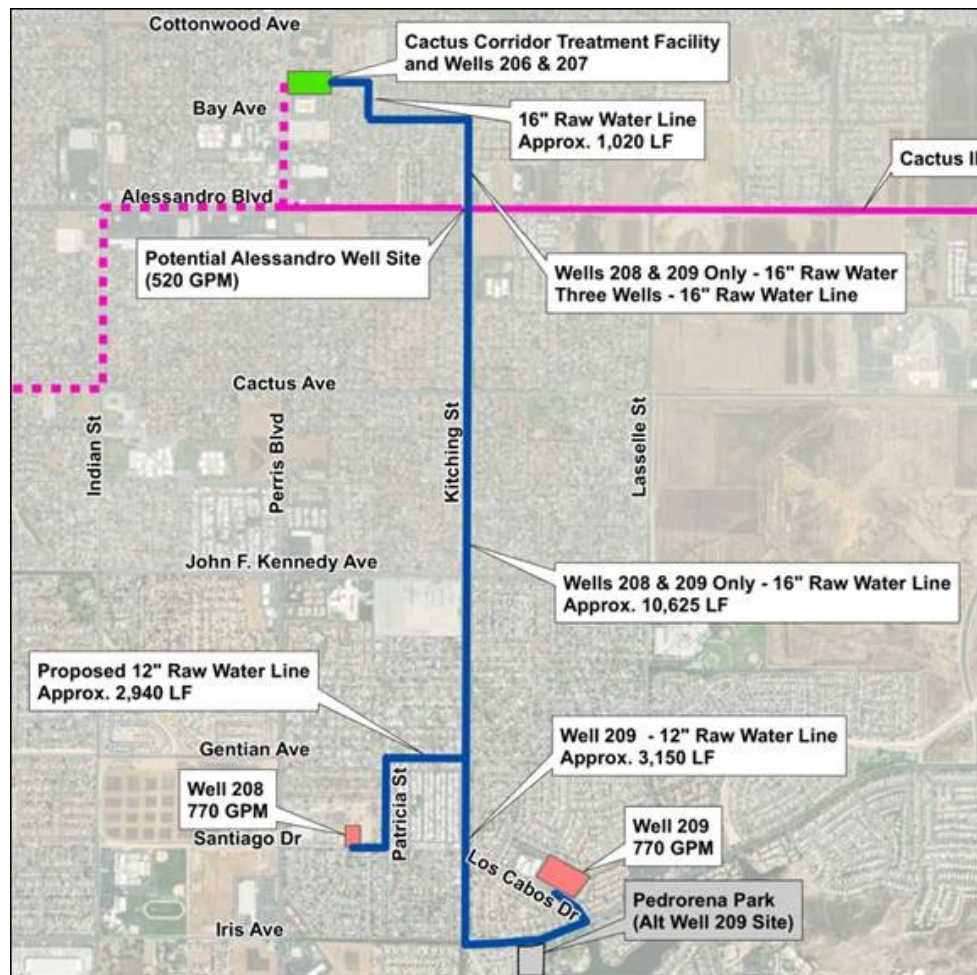
## Upcoming Construction Projects for the Next Six Months

## Estimated Construction Cost

• San Jacinto Raw Water Pipeline (Advertised 4-15-2021 – Prequalified Contractors)	\$20,000,000
• Newport Lift Station Piping Replacement	\$1,200,000
• Cactus II Feeder Phase 1	\$7,500,000
• French Valley Recycle Water Pipeline Phase II	\$1,300,000
• MVRWRF Air Line Rehabilitation	\$1,400,000
• TVRWRF Stormwater Improvements	\$1,700,000
• Warm Springs Sewer Crossing Erosion Mitigation	\$1,500,000
• Citrus II Tank Interior Recoat	\$1,400,000
• Kalmia Tank Interior Recoat	\$320,000
• Lower Las Brisas Tank Interior Recoat	\$770,000
• Manzanita I Tank Interior Recoat	\$300,000
• Contour Tank Interior Recoat	\$240,000
• Day Street Lift Station Wet Well Piping Replacement	\$700,000
• Hewitt and Evans Groundwater Treatment Facility	\$5,000,000
• Judson Tank Site Grading and Civil Work	\$1,200,000
• Pettit Regulated Pressure Zone	\$1,700,000

# North Perris Groundwater Basin Program

- Groundwater Contamination Prevention and Remediation
- \$116M Program
- \$45M Prop 1 Grant Award
- Program Elements
  - Extraction Wells
  - Monitoring Wells
  - Treatment Wells
  - Treatment Facilities
  - Blending Stations
  - Pipelines
- Schedule
  - Three construction projects to bid in Fourth Quarter of 2021



# Project Development Services

- Environmental and CEQA
- Proper Appraisal and Acquisitions
- Planning Studies
- Condition Assessments
- Grant Funding Applications
- Geotechnical Investigations
- Survey
- Utility Pot Holing and Location
- Cost Estimating
- Hydraulic Modeling
- Design Plans and Specifications
- Value Engineering



# Upcoming Project Development Support Services Opportunities

---

## Water Pipelines

- 1650 PZ Realignment and Pipelines
- Brackish Water Transmission Pipeline Phase 2
- Briggs Road Water Pipeline
- Goetz Road Transmission Pipelines
- Leon Road Transmission Mains
- Menifee Road Water Pipeline (PVEPW-102)
- Nuevo Road Potable Water Pipeline
- Scott Road Gap Transmission Pipeline
- State Street Pipeline Replacement
- Sun City Leaky Pipeline Replacement Phase 3
- Sun City Leaky Pipeline Replacement Phase 4
- Western Way Transmission Pipeline

# Upcoming Project Development Support Services Opportunities

---

## Water Conveyance

- Bautista I Booster Station Upgrade
- Craig Booster Station Expansion – Phase I
- Ellis Booster Pump Station Replacement
- Judson 2.2 MG Tank
- Goetz Road 8 MG Tank
- Murrieta Road Inline Booster Pump Station Replacement-RFP out, preproposal 4/7
- Nuevo 4.6 MG Tank and Pipeline
- Redlands and Locust Booster Station Improvements
- Matthews Booster Pumping Station
- Romoland Inline Booster Pump Station Replacement
- Various Tank Rehab/Coating (Interior/Exterior) Projects
- Western Way Booster Pumping Station

# Upcoming Project Development Support Services Opportunities

---

## Wastewater

- MVRWRF Plant 2A Rehabilitation Design
- PVRWRF Sidestream Treatment
- Cawston Lift Station Siting Study
- San Jacinto River Crossing Feasibility Study

## Recycled Water

- PWR – Advance Water Treatment Facility
- PWR – Conveyance Pipelines and Blending Facility
- Murrieta Hot Sprints Road Crossing



# How we do Business

---

## Administrative Principles

- ✓ Fair, Open and Competitive Practices
- ✓ Greatest Value for EMWD's Rate Payers
- ✓ Service Providers Outreach and Education in Competing for Contract Opportunities
  - ✓ Annual Business Outreach Luncheon Contact:  
Allan Freetage, Public Affairs Specialist  
(951) 928-7777 Ext. 4226

## Solicitation Processes

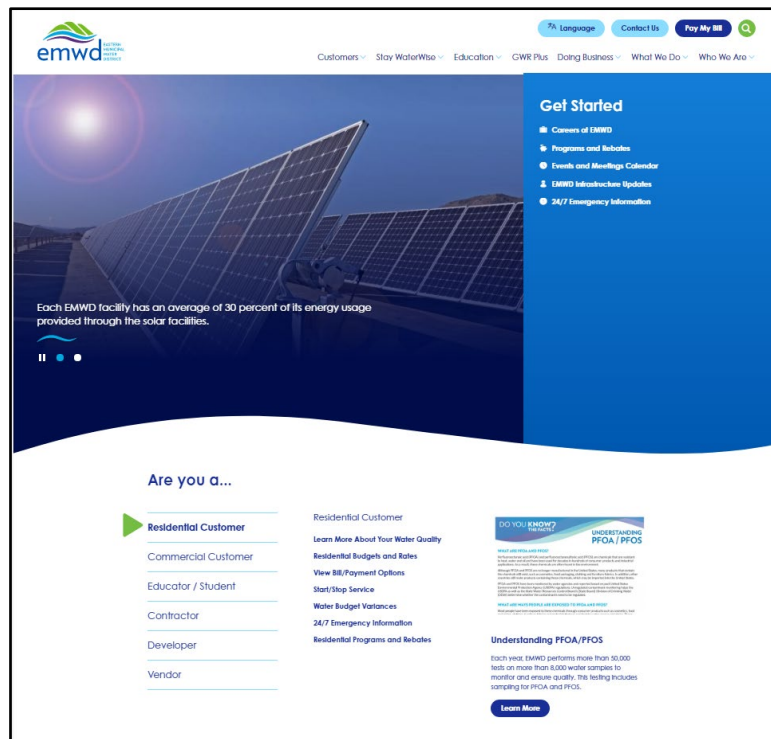
- Request for Quotation (RFQ)
- Request for Bid (RFB)
- Request for Proposals (RFP)
- Request for Qualifications (RFQ)

## Contracting Types

- Purchase Orders
- Blanket Agreements
- Master Contracts/Agreements
- Contracts

# For More Information

- Visit [www.emwd.org](http://www.emwd.org)
  - New Construction: Doing Business/Construction
  - Goods, Materials, Services and Equipment: Doing Business/Vendors





# Contact Information

Bruce Mitzel, P.E.  
Director of Field Engineering  
(951) 928-3777 Ext. 4476

Email: [mitzelb@emwd.org](mailto:mitzelb@emwd.org)