



**Construction Network:  
Update on Metro Capital Projects**

**Tim Lindholm  
Senior Executive Officer, Program Management**

**May 12, 2021**





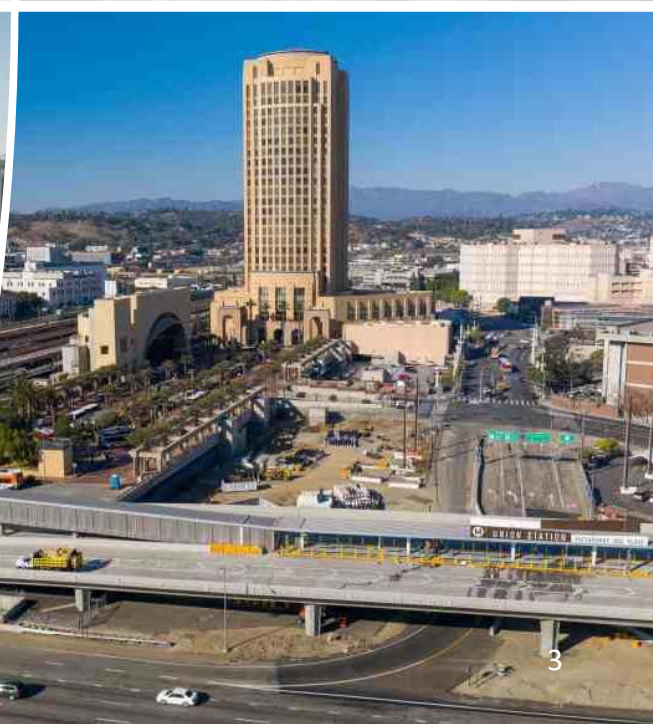
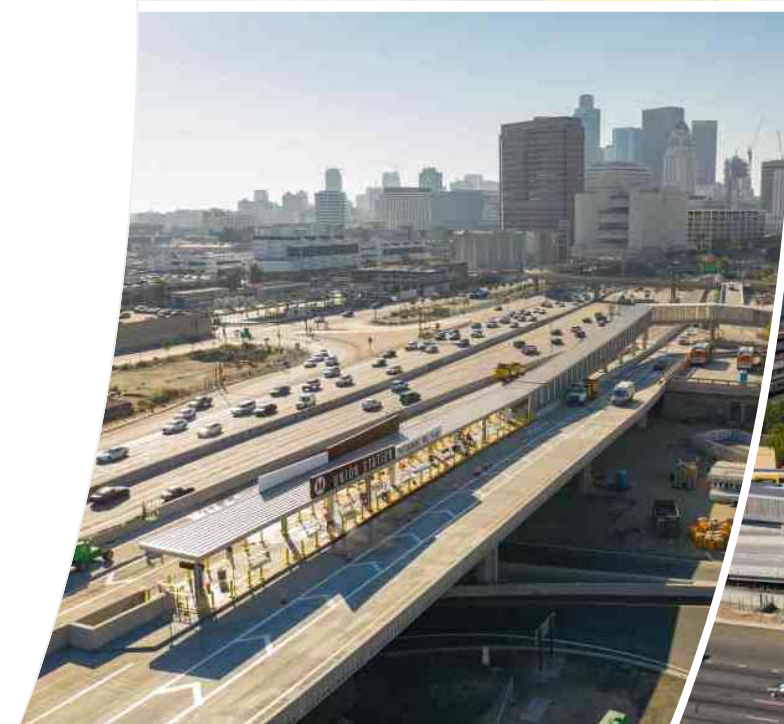
MIRAS BUS PLAZA

# Recently Completed Capital Projects



# Patsaouras Plaza Busway Station

- New busway station that provides direct connection from Silver Line to Union Station
- Budget: \$50.3 million
- Opened November 2020





# Cesar Chavez Bus Stop Improvements

- New transit pavilion and plaza at the most active LA Union Station bus stop on the eastside of the Union Station campus
- First realization of the Union Station Master Plan
- Budget: \$4 million
- Opened October 2020





# Capital Projects In Progress



# Willowbrook/Rosa Parks Station

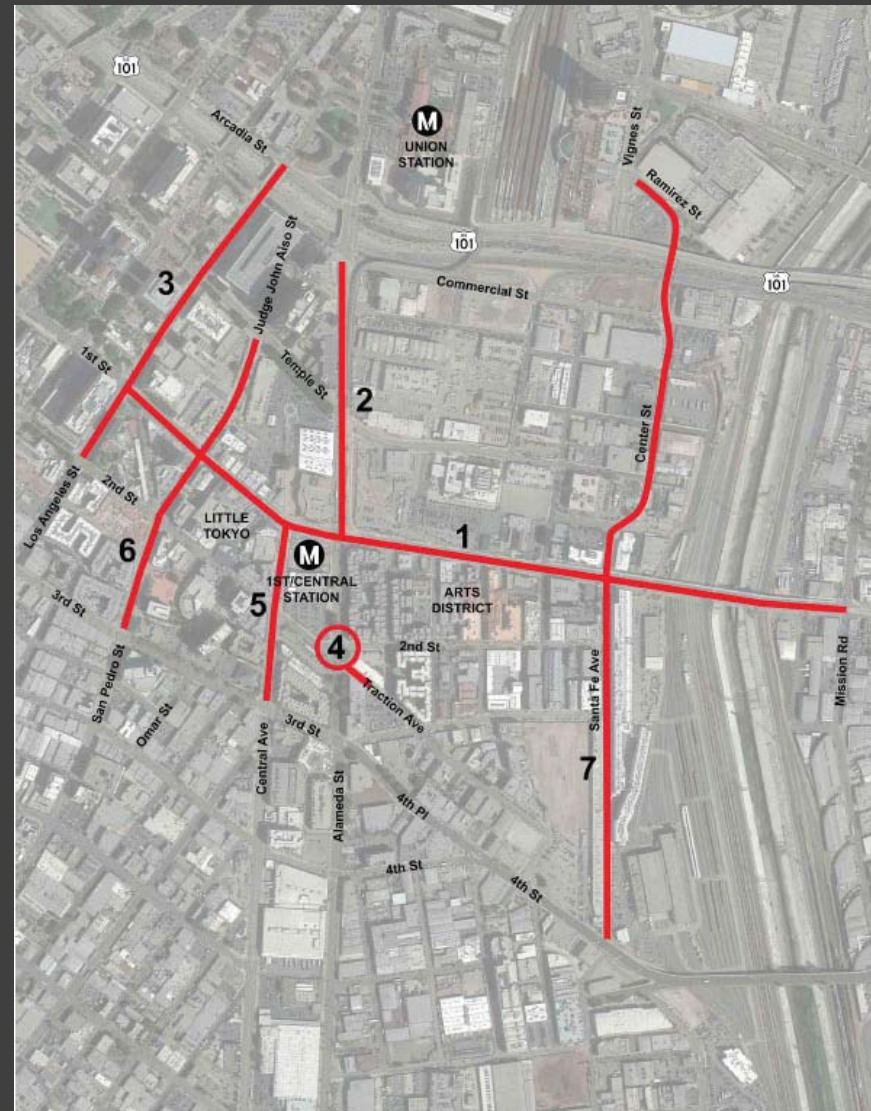


- Complete renovation and expansion of Willowbrook/Rosa Parks Station (Green/Blue)
- New Blue Line Platform and mezzanine, new community crossing, kiss and ride, bus bays, customer service building, security bldg, bike hub
- Budget: \$125 million
- 95% complete, platform and customer services open, remainder opening May 2021



# Eastside Access

- Scope: Pedestrian/Streetscape improvements to improve connections between new Little Tokyo Station, Union Station, and Arts District
- Includes Class 1 bike lanes, pedestrian promenade, enhanced crosswalks, lighting, landscaping
- Budget: \$28 million
- Starts construction Fall 2021



# I-5 North County Enhancements (Parker Road to SR-14)

---

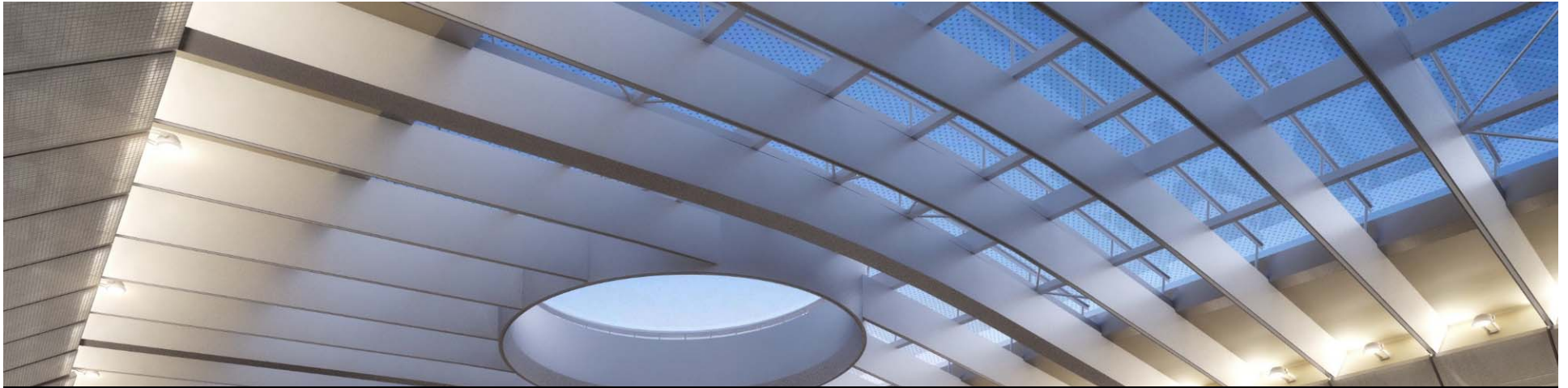
- Scope: Improvement of I-5 in Santa Clarita Valley (car pool lanes, auxiliary lanes, truck lanes, walls, bridges, etc)
- Budget: \$780 million
- Design/Bid/Build
- Managed by Metro
- Design 100% complete
- Starts construction Fall 2021





- Connects Crenshaw/LAX line with LAWA APM
- Design 100% Complete
- Bidding in Process
- CMSS Team In Place
- Budget: \$898 Million
- Starts major construction Fall 21
- Complete: Summer 2024

# Airport Metro Connector Station



# Upcoming Capital Projects





# Union Station Forecourt/Esplanade

- Reconstruct Alameda and Los Angeles Streets along frontage of Union Station with widened sidewalks for pedestrian and bike paths.
- Streetscape, lighting, and traffic upgrades.
- 37' wide raised crosswalk on Alameda to enhance pedestrian and bicycle access and safety between Union Station and surrounding communities.
- Design/Bid/Build
- Budget: \$30 million
- Out to Bid: Spring 2022



# Rail to Rail

- 8 Mile Active Transportation Project (bike/ped path) along former BNSF Slauson Corridor
- Connects Blue Line, Silver Line, and future Crenshaw Line
- Design/Bid/Build
- ROM: \$140 million
- Construction contract and CMSS contract currently out to bid

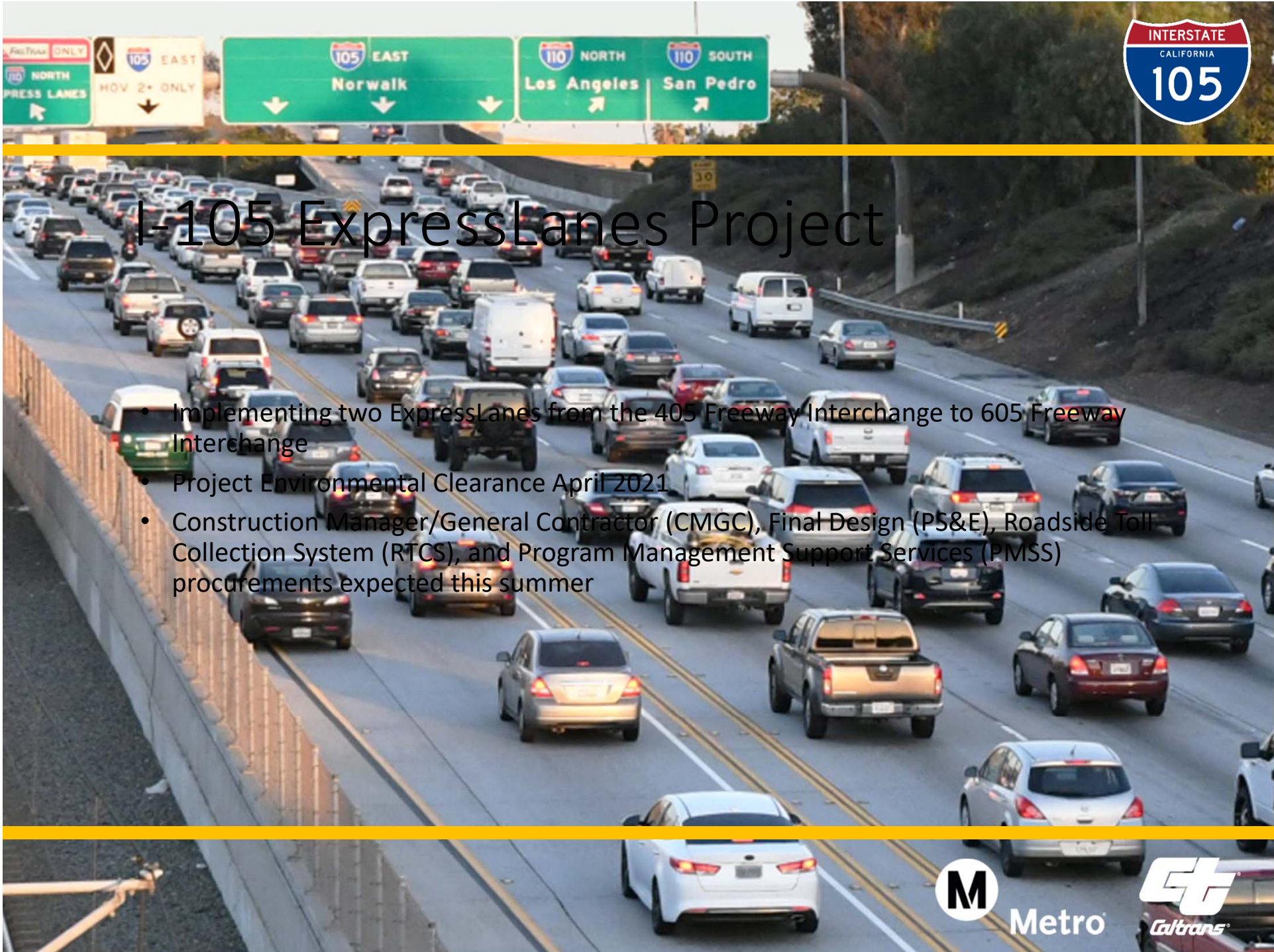




# Highway Projects Nearing Construction

- I-605 South Street (IFB Fall 2021)
- I-710 South Soundwall 2 (IFB Fall 2021)
- Soundwall Package 10 (IFB Fall 2021)
- I-605 Valley Boulevard (IFB Winter 21/22)
- I-605 Beverly (IFB Winter 21/22)
- SR-60 7<sup>th</sup> Avenue (IFB Summer 22)
- SR-91 Atlantic to Cherry (IFB Summer 2022)





# I-105 ExpressLanes Project

- Implementing two ExpressLanes from the 405 Freeway Interchange to 605 Freeway Interchange
- Project Environmental Clearance April 2021
- Construction Manager/General Contractor (CMGC), Final Design (P5&E), Roadside Toll Collection System (RTCS), and Program Management Support Services (PMSS) procurements expected this summer

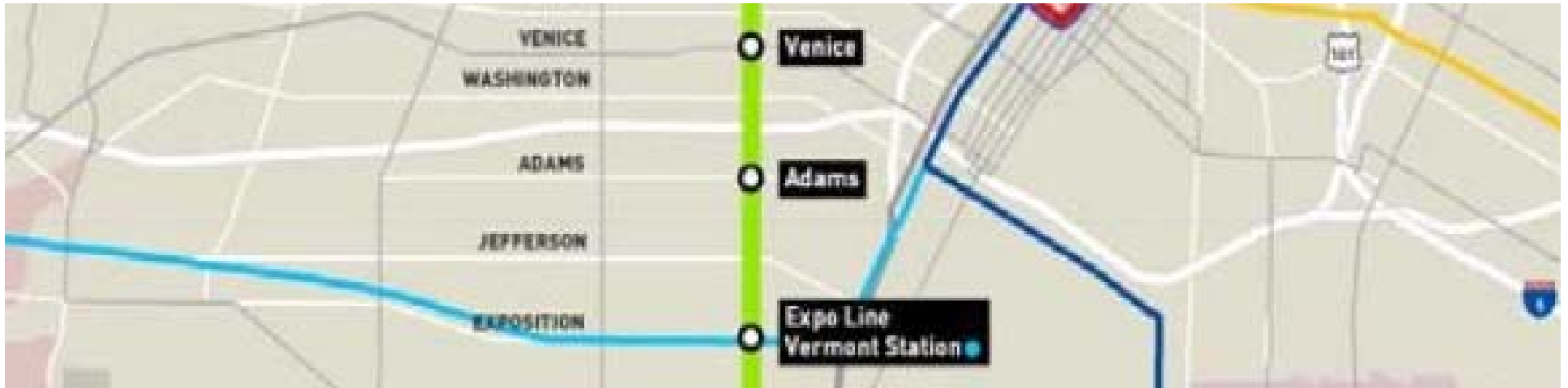




# Orange Line BRT Improvements

- Railroad-Type Gates at 34 locations
- Aerial Stations and grade separations at Sepulveda & Van Nuys
- Multi-modal connection to ESFV LRT Terminal Station on Van Nuys
- Up to 16 min savings in bus travel time
- \$390M Funding available
- Conceptual engineering complete
- CMSS procurement in process
- Progressive Design Build contract will be advertised late Summer 2021

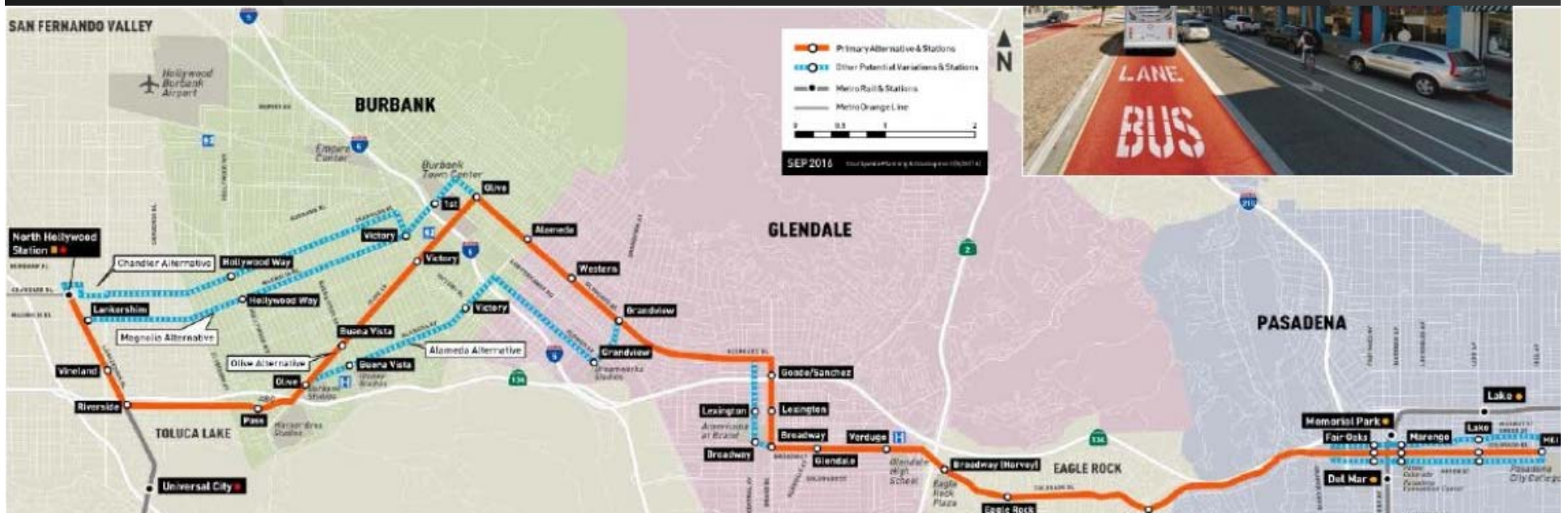




# Capital Projects in Planning

# New BRT: NoHo to Pasadena

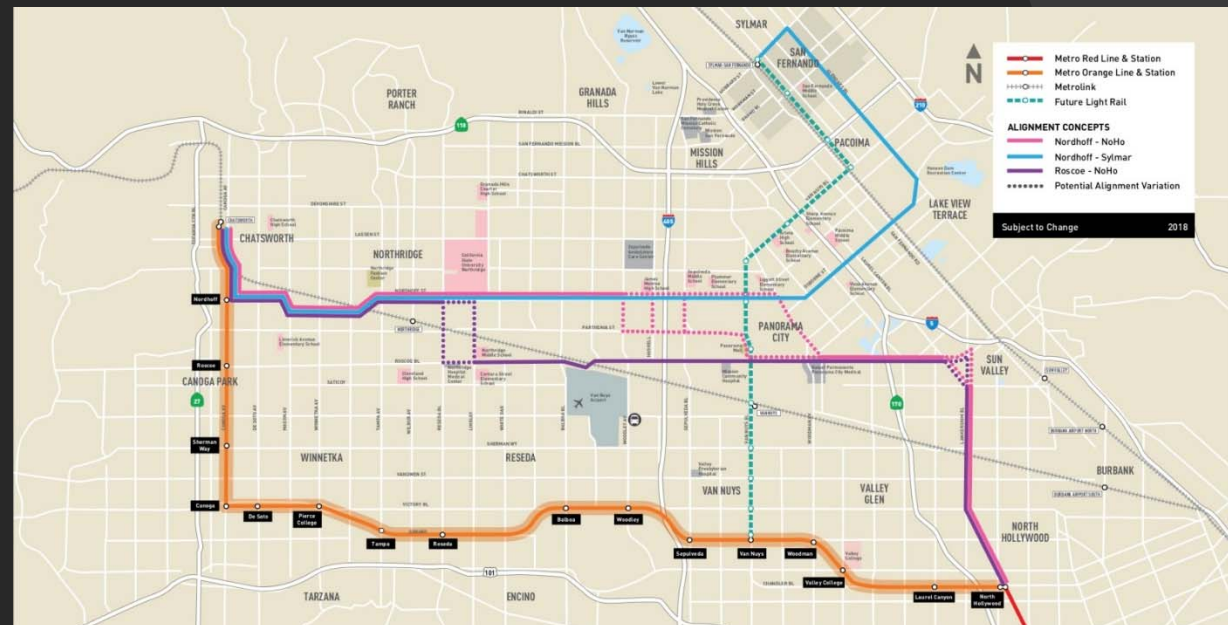
- Environmental/Scoping: Ongoing
- LPA: May 2021 Board
- Preliminary Engineering Start – Summer 2021
- Begin Construction – 2022
- Project Opens 2025





# New BRT: West San Fernando Valley

- Environmental/Scoping: Ongoing
- Preliminary Engineering – Summer 2021
- Begin Construction – 2022
- Project Opens 2025



# New BRT: Vermont Transit Corridor

Environmental/Scoping  
Underway

Preliminary Engineering  
Winter 2021

Begin Construction – 2023







# LA River Path

- 8-mile path from Elysian Valley to City of Maywood
- Environmental Phase: Ongoing
  - Release of Draft EIR: Summer 2022
  - LPA Adoption: Spring/Summer 2023
- Final Design, Permitting, Acquisition: 2022 - 2025
- Begin Construction: 2025
- Project Opens: 2028
- Price Tag: \$365 Million (Measure M)



An aerial architectural rendering of a city street scene. The scene features a large, modern building with a curved facade and a glass facade section. A wide street with multiple lanes runs through the center, with cars and buses moving. To the left, there is a large parking lot filled with cars. To the right, there are smaller buildings and green spaces with trees. The overall style is a detailed, shaded architectural visualization.

Thank You