



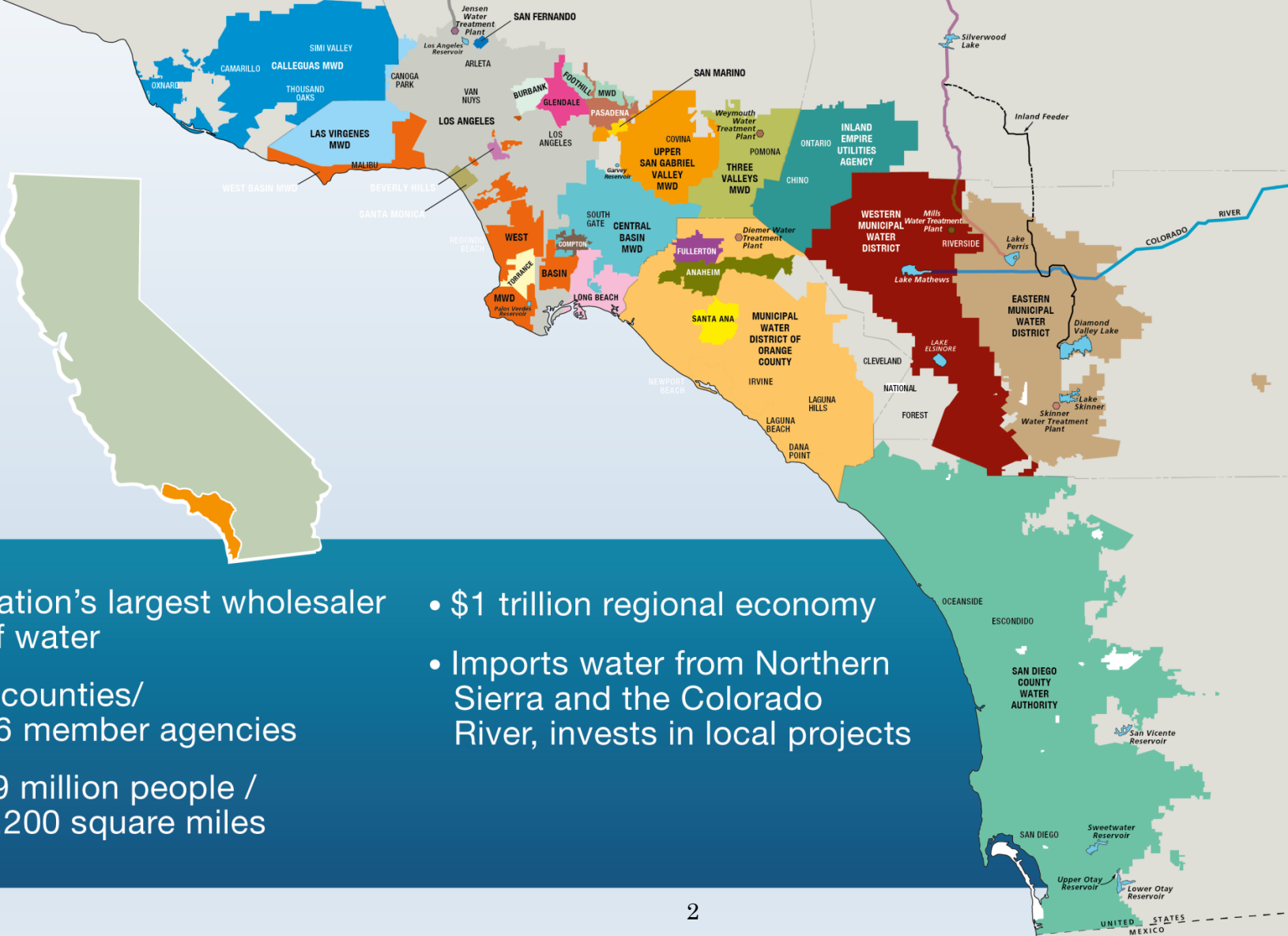
Metropolitan Water District of Southern California Capital Program Update

JOHN BEDNARSKI, CHIEF ENGINEER

FEBRUARY 3, 2022



About Metropolitan



- Nation's largest wholesaler of water
- 6 counties/ 26 member agencies
- 19 million people / 5,200 square miles
- \$1 trillion regional economy
- Imports water from Northern Sierra and the Colorado River, invests in local projects

Metropolitan History

“Before we were a water company,
we were a construction company.”

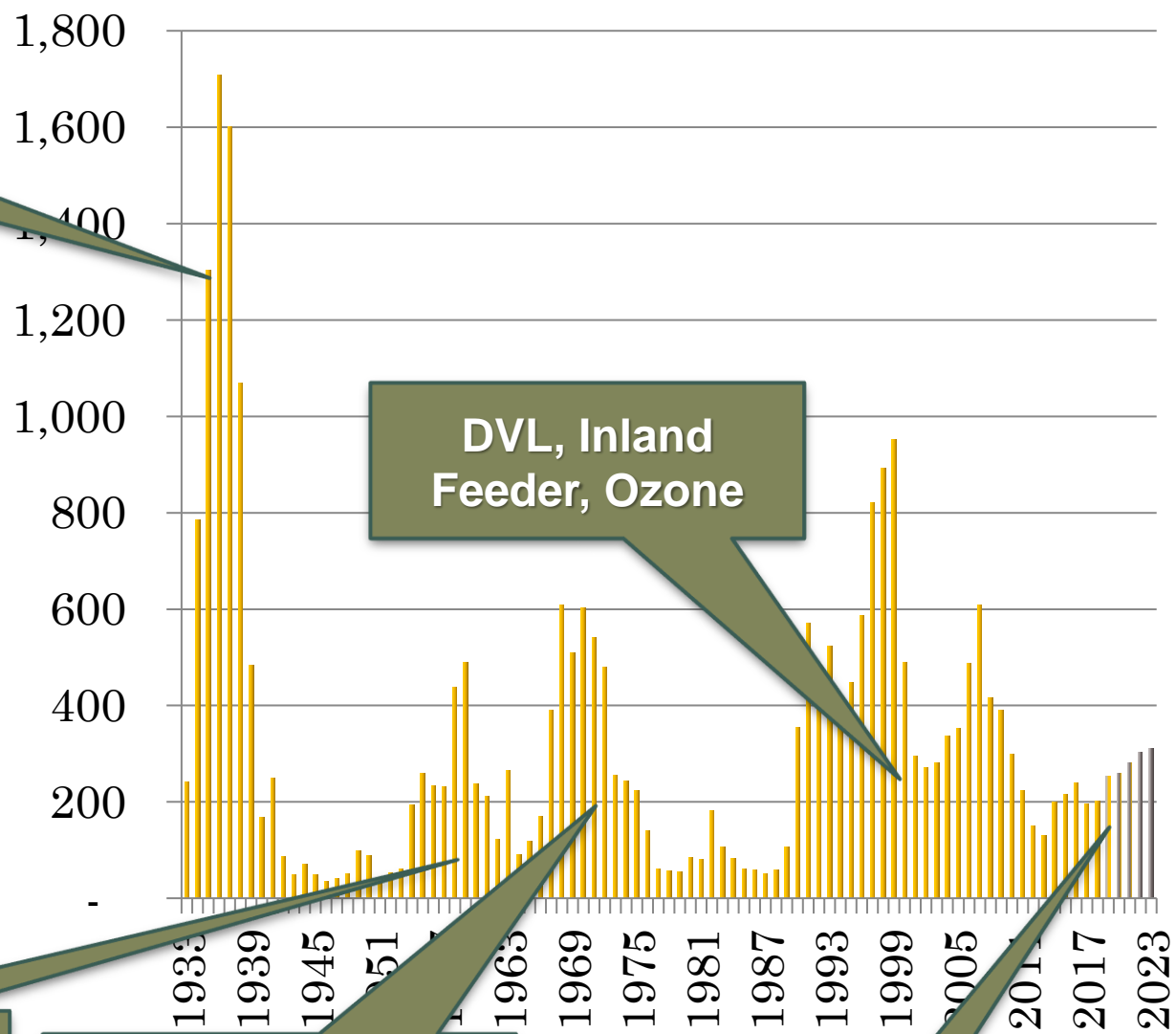
Old MWD Construction Management Trope



Metropolitan History

Capital Program History (today's \$)

Colorado River Aqueduct (CRA)
Original Construction



DVL, Inland Feeder, Ozone

2 CRA Expansions

SWP Expansion

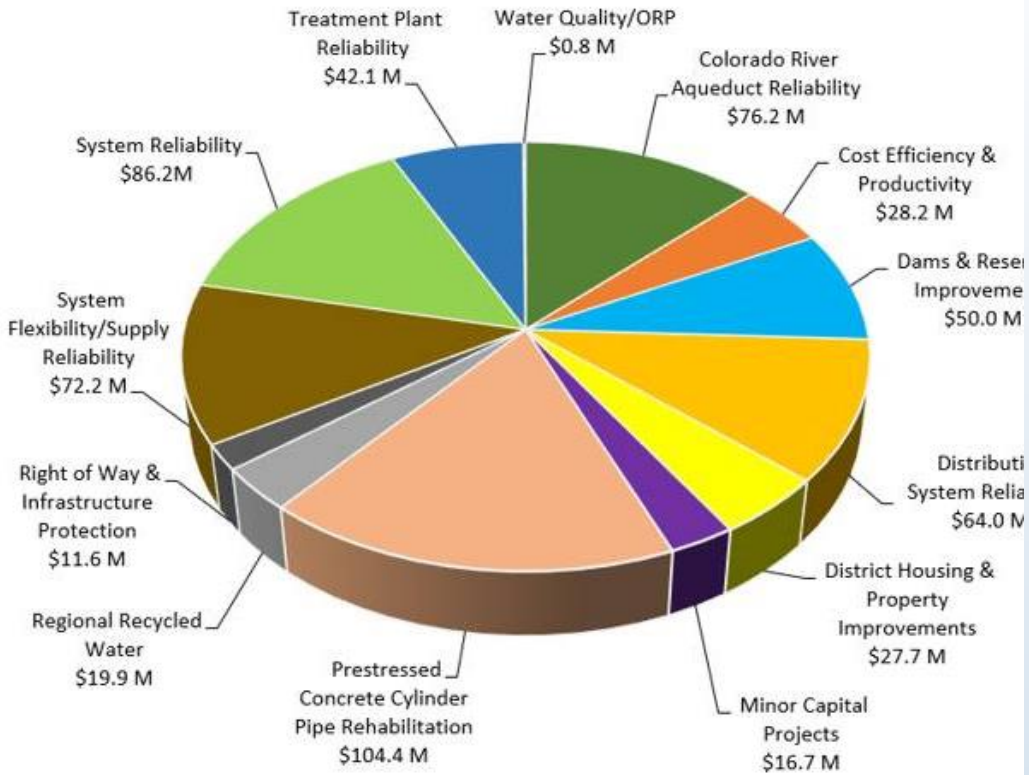
R&R

Rehabilitation & Replacement Scope

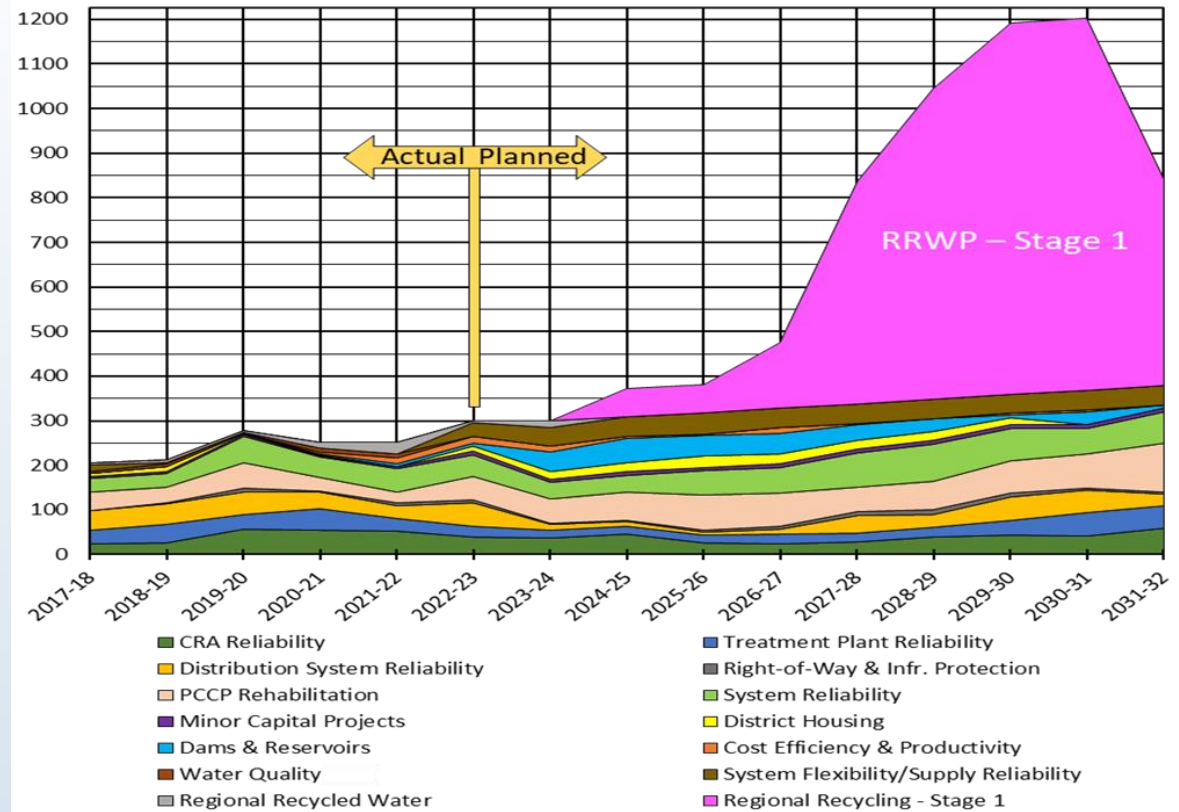
Here are the facilities we are charged with maintaining through our R&R program:

- 5 Water treatment plants and 5 CRA pumping plants
- 775 miles of pipelines, with almost 3,000 structures and 45 pressure control stations
- CRA: 79 miles of open canals, 54 miles of c/c conduits, 117 miles of tunnels and 47 miles of siphons
- 308 miles of high-voltage power transmission lines
- Over 500 buildings
- 122,000 acres of land, with over 1,000 miles of roads
- 16 hydroelectric plants
- 17 reservoirs

Capital Investment Plan for FY 2022/23 and FY 2023/24



CIP 15-Year Window by Program



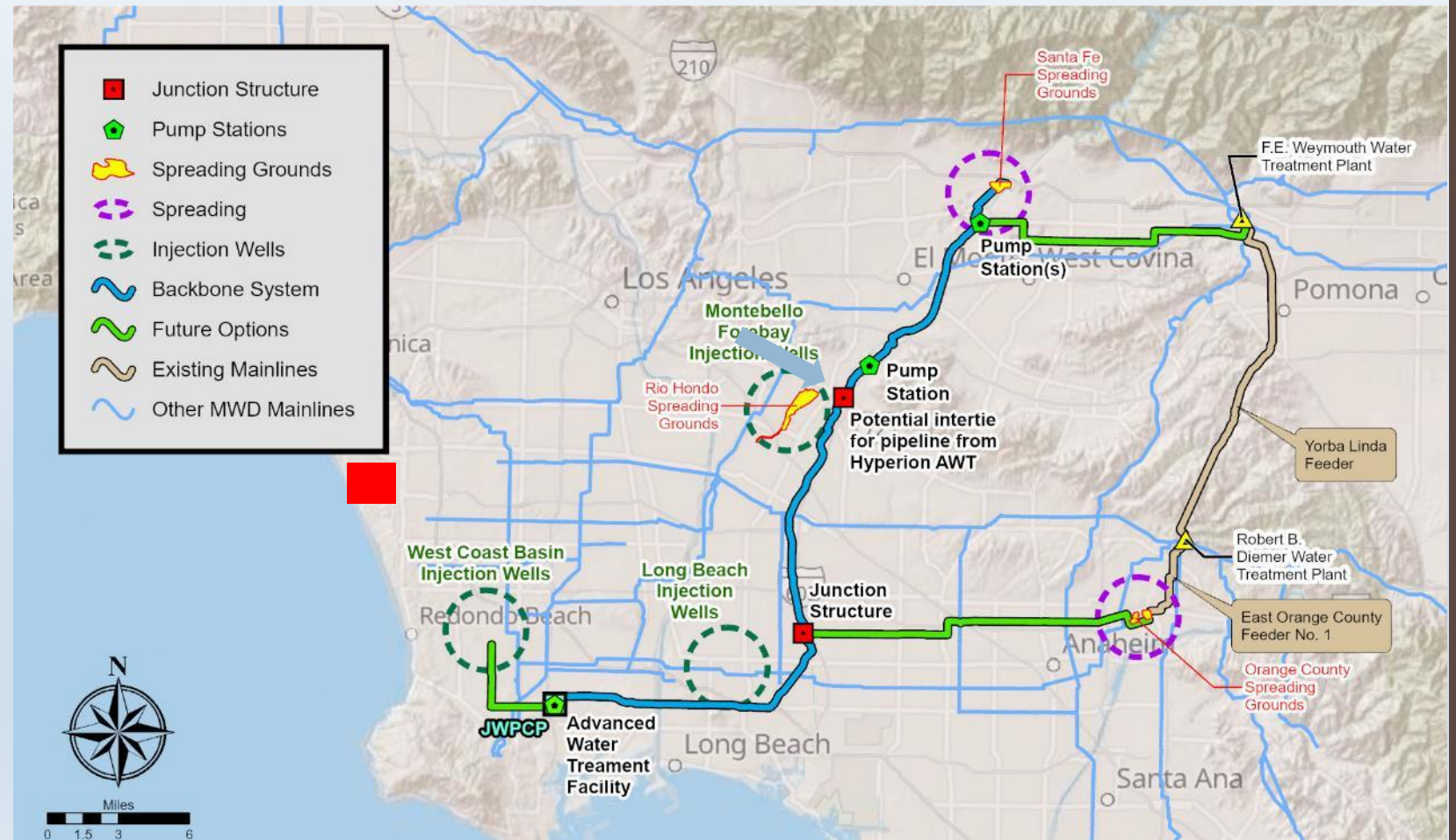
CIP Overview (Proposed)

- \$300M/year proposed budget
- Over 300 projects in design with future contracts continually to be advertised
- ~\$3.3B in non-Recycled Water Program CIP spending over next 10 years

Focus on: Recycled Water

Conceptual facilities include:

- Modifications to LACSD's Carson Plant
- New 100 MGD AWT Plant
- Conveyance pipelines
- Pump Stations
- Recharge facilities
- \$3B+ over the next decade





Focus on: PCCP Relining Program

- 100 miles of pre-stressed concrete pipe, lined with steel
- Over \$3B (escalated) remaining work
- Dozens of contracts over the next 30 years
- Generally use pre-qualified contractors
- Encourage contractors and pipe suppliers to develop skills necessary to bid

Focus On: Drought Projects



- Deliver supplies to SWP-constrained areas
- Still developing projects, but could be \$500M over next decade

Upcoming Contracts

- Currently Out for Bid

Project	Estimated Cost	Bid Opening
La Verne Shops Building Completion - Stage 4	\$12M	Mar. 1, 2022
Lake Mathews Tank Farm Roof Modifications	\$0.25M	Mar. 1, 2022
Weymouth Basins 5-8 and Filter Building No. 2 Rehabilitation	\$70M	Mar. 3, 2022
Orange County Feeder Relining- Reach 3	\$11M	Mar. 3, 2022
Sepulveda, West Valley, and East Valley Feeders Interconnection Upgrades	\$1.8M	Mar. 10, 2022
Second Lower Feeder PCCP Rehab - Reach 3A	\$16M	Mar. 22, 2022

Upcoming Contracts

- Next 2 Months

Project	Estimated Cost	Post for Bid
Video Room Renovation at Union Station	\$0.58M	February
Battery Energy Storage at Weymouth Plant	\$5.6M	February
Weymouth Facility Paving	\$1.4M	February
Jensen Ozone PSU Installation (rebid)	\$1.5M	February
Wadsworth Pumping Plant Bypass Pipeline and Rialto-Inland Feeder Intertie: 96-inch pipe and 3-84-inch valves (procurement)	\$6M	March
Perris Valley Pipeline Tunnels	\$66M	March
CRA Storage Buildings at 3 Pumping Plants	\$8M	March
Etiwanda Pipeline Rehabilitation Relining - Stage 3	\$20M	March
HQ Building Level P1 Fire Sprinkler Replacement	\$1M	March

Upcoming Contracts

- Through mid-2022

Project	Estimated Cost	Post for Bid
West Orange County Feeder Cathodic Protection Project	\$750,000	April
Foothill HEP Wicket Gate Procurement	\$700,000	April
Rialto Feeder Rehabilitation	\$1.2M	May
OC-88 Air Compressor Upgrades	\$500,000	May
Foothill HEP Wicket Gate Procurement and Runner Rehabilitation	\$700,000	June
San Diego Pipelines 1&2 Patrol Road Relocation	\$300,000	June
Foothill HEP Seismic Upgrade	\$6M	June

- Potentially 17 additional construction and major procurement contracts out for bid valued at \$120M through end of 2022

Emerging Initiatives

- Metropolitan Board to consider adopting a PLA policy in March
- Pursuing legislative means of allowing alternative project delivery on selected projects



5. Doing Business with Metropolitan

Metropolitan Business Outreach Program

- ✓ **Business Outreach Team**
- ✓ **Established in 2001 – Board of Directors – SBE Goal Set and Raised to 25%**
 - Contracts over \$100,000 won by a Non-SBE Tracked
 - MWD does not have a “Good Effort”
- ✓ **PlanetBids Platform: SBE Registration & Certification, Posting Bids, CCAP, & Events**
 - Free, 30 minutes - Access through Google Chrome or Microsoft Edge
 - Reciprocity w/DGS
 - 2000+ Certified SBE Vendors – Primes Access to View SBE Database
 - *Tip: Selection of Vendor Category Codes – Bids Automatically Sent*
- ✓ **Partnership with Engineering – Project Analysis - CCAP Program – MWD RE/RI**
 - Transparency & Accountability
- ✓ **Contact Information – Help Line (213) 217-7444 or staff contact at**
www.mwdh2o.com/doing-business-with-us/business-outreach-programs

Business Outreach Program Team



John Arena
Business Outreach
Team Manager



Wigs Mendoza
Water Innovation



Ken Ashford
Business Outreach
Advocacy



Peggy Vogt
Water Innovation



Carmen Bermudez-Bracy
SBE Certification/CCAP



Lydia McGee
SBE/DVBE Advocate



Rick Duarte
Construction & Engineering

“MetWorks” Initiative

- ✓ Metropolitan’s in-house program to reach out to consulting and contracting community
- ✓ Quarterly Zoom-call (eventually in person) to meet MWD staff, learn about upcoming work, ask questions
- ✓ Open to anyone
- ✓ Next meeting later this month: Feb. 25, 2022

THE METROPOLITAN WATER DISTRICT OF SOUTHERN CALIFORNIA

PRESENTS

A New Year & New Ways to Work With Metropolitan



Learn more about contracting opportunities and how we work

Learn about upcoming:

Large and small contracts

RFPs & RFQs for
professional services

Meet:

Metropolitan's new Construction
Management Unit Manager,
David Yanez

Ask:

Any questions about
working with Metropolitan

METROPOLITAN INVITES YOU TO PARTICIPATE VIA
ZOOM

FEBRUARY 25, 2022
10:00 am - 11:30 am



[Click here to Register](#)

For more information contact Lydia McGee at lemcgee@mwdh2o.com

Recent Changes to Web Browser used for Registration and SBE Certification:

Must use Google Chrome or Microsoft Edge

Log Into www.mwdh2o.com OR <https://pbsystem.planetbids.com/portal/16151/portal-home>

The Metropolitan Water District of Southern California
Vendor Portal

NEW VENDOR REGISTRATION
Create a new vendor record.
If you wish to view or edit an existing vendor, simply Log In.

BID OPPORTUNITIES
Search and bid electronically on opportunities with this agency, download documents, and become a prospective bidder.

MY CONTRACTS LOGIN REQUIRED
Manage your awarded contracts, record payments, add subcontractors, produce reports and charts.

CERTIFIED VENDORS LOGIN REQUIRED
Find Certified Small Businesses

CONTRACTS LOGIN REQUIRED
View public information regarding agency contracts.

MY INSURANCE LOGIN REQUIRED
View and fulfill insurance requests / requirements.