



Construction Network: Update on Metro Capital Projects

**Tim Lindholm
Deputy Chief Program Management Officer**

April 27, 2022

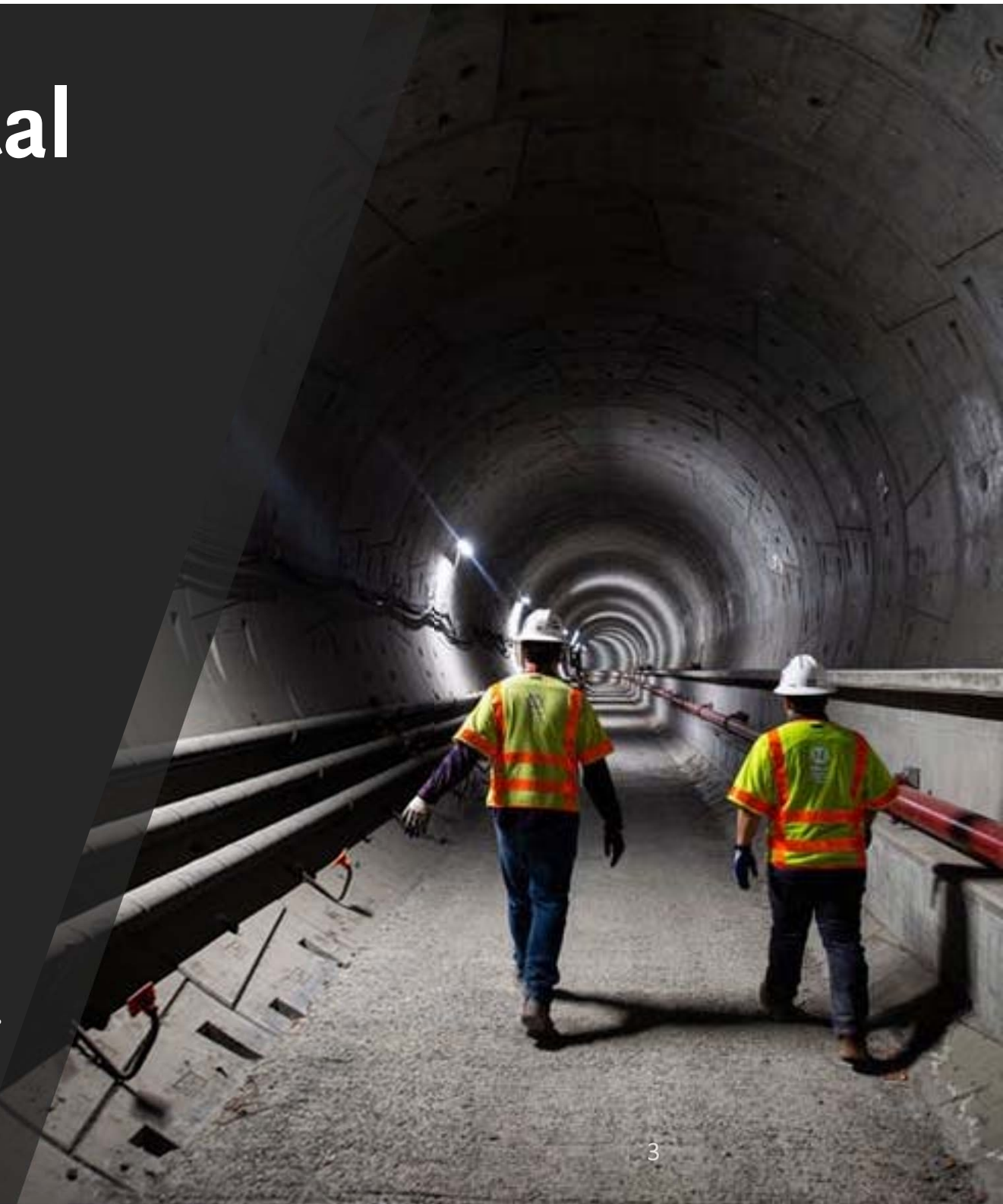
AGENDA

- Introduction
- Department
- State of Metro
- FY23 Budget
- Alternative Delivery
- Capital Program



Metro Capital Program

- Metro Total FY23 Budget: \$8.5 Billion
- Total FY23 Construction Budget: \$2.5 Billion
- 75 active projects valued at \$24 billion
- Five major rail expansion projects underway (30 miles)
- Crenshaw/LAX and Regional Connector testing underway and will open by end of 2022.





Metro Projects In Progress

Crenshaw/LAX(K) Light Rail

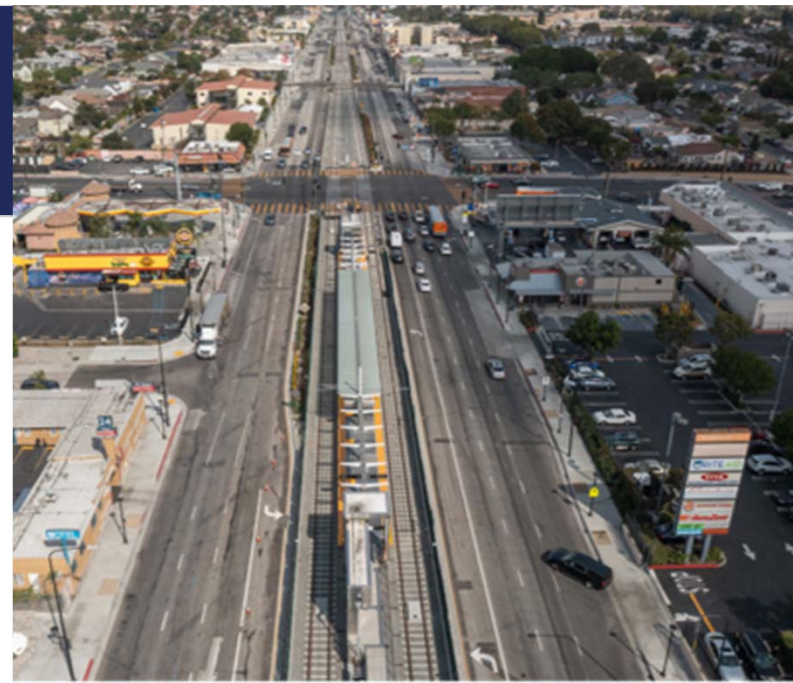
Budget: \$2.1 Billion

Connects Expo (E), Green (C) and LAX

Substantially Complete

Testing Underway

Opens Fall 2022



Regional Connector

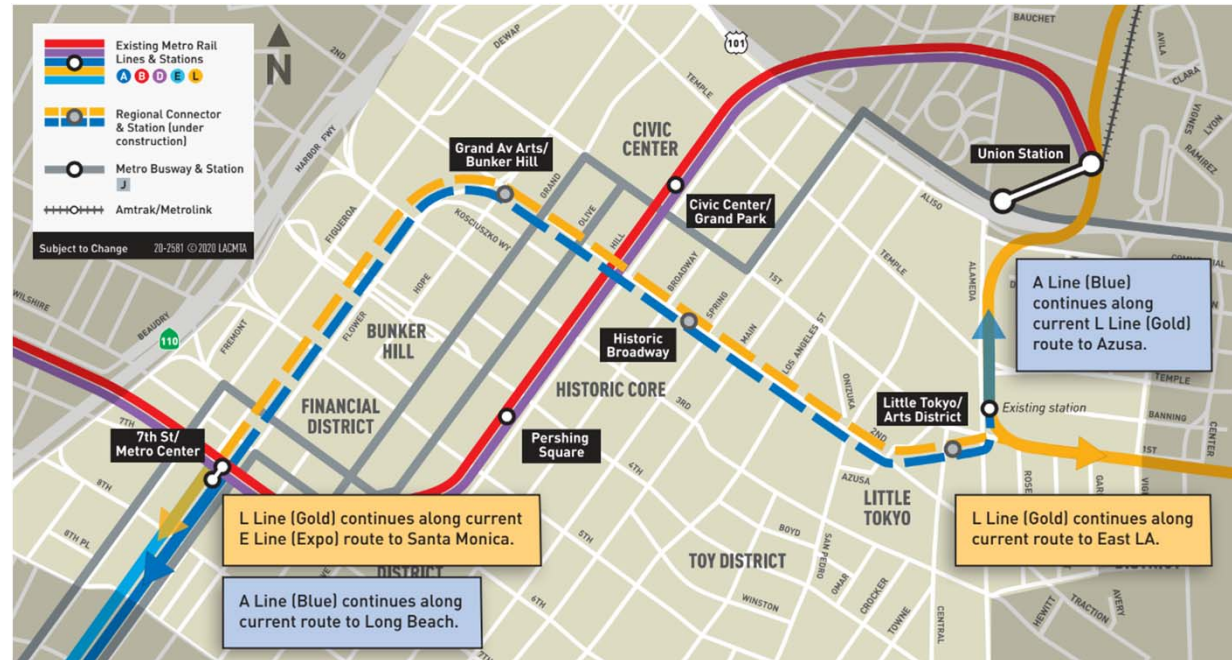
Budget: \$1.7 Billion

Connects A (Blue), E (Expo) and L (Gold) lines

Substantially Complete

Testing Underway

Opens Fall/Winter 2022



Purple Line Extension

Budget: \$8.7 Billion

Built in three sections (1, 2, 3)

Seven new stations from
Wilshire/Western to
Westwood/VA

Section 1: 2024

Section 2: 2025

Section 3: 2027



Airport Metro Connector Station

Connects Crenshaw/LAX
line with LAWA APM and
Metro buses

Budget: \$898 Million

Started major
construction Fall 2021

Complete: Fall 2024



Rail to Rail

- 8 Mile Active Transportation Project (bike/ped path) along former BNSF Slauson Corridor
- Connects Blue Line, Silver Line, and future Crenshaw Line
- Design/Bid/Build
- Budget: \$140 million
- Started construction March 2022
- Complete Late 2024



I-5 North County Enhancements (Parker Road to SR-14)



Scope: Improvement of I-5 in Santa Clarita Valley (car pool lanes, auxiliary lanes, truck lanes, walls, bridges, etc)

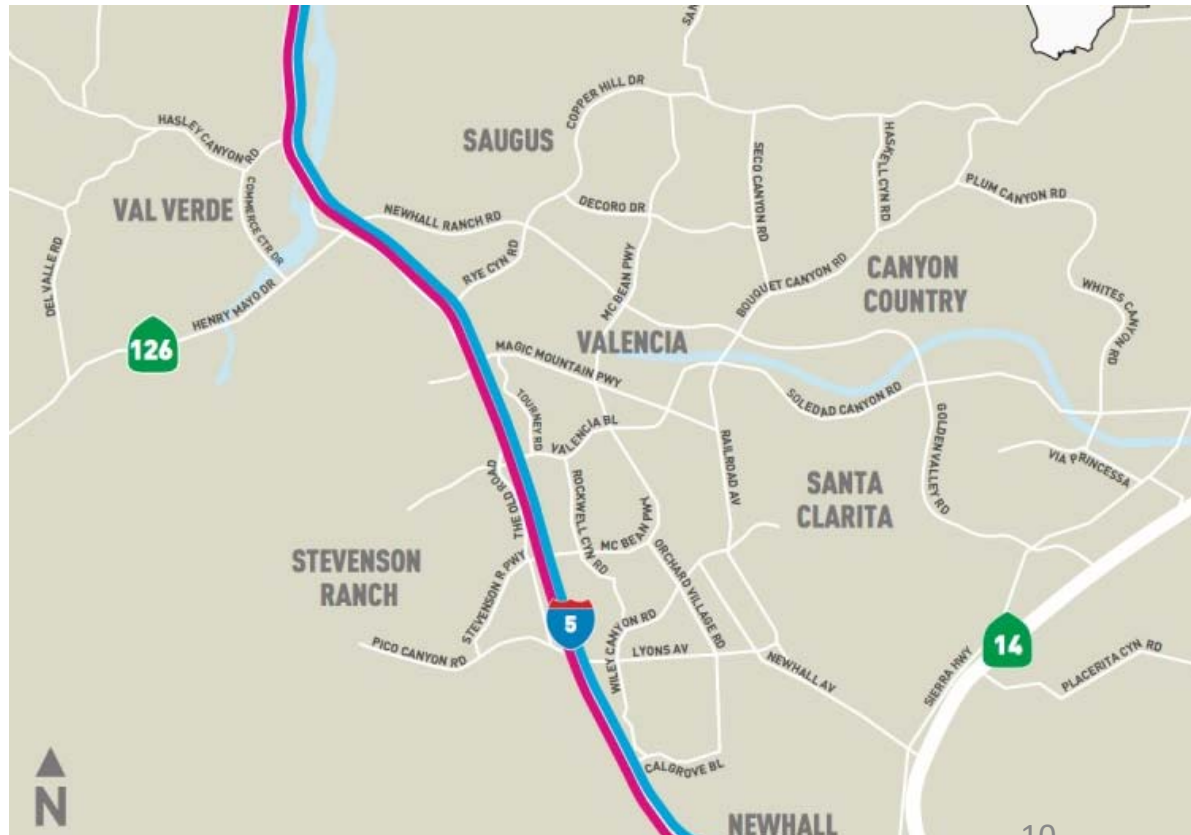
Budget: \$780 million

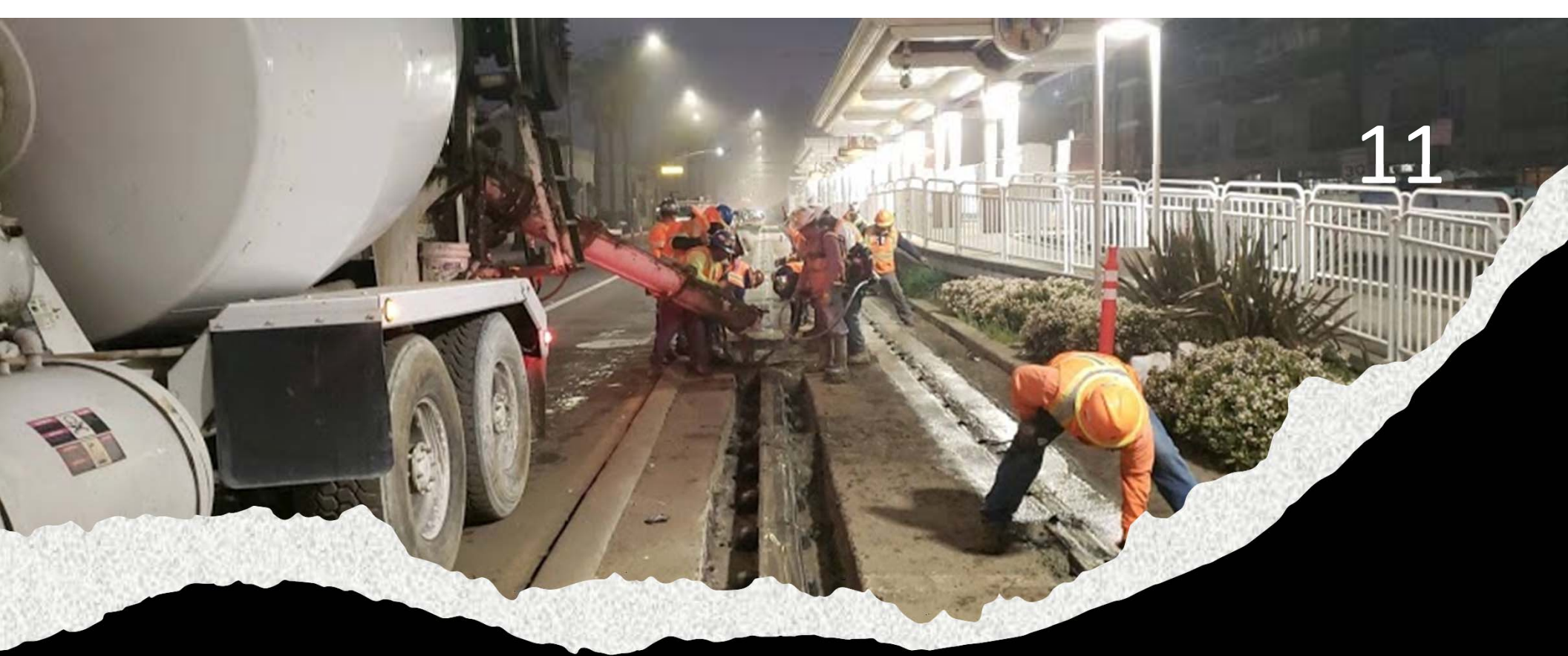
Design/Bid/Build

Managed by Metro

Started construction August 2021

Complete 2026





Upcoming Metro Projects



I-105 ExpressLanes Project

- Implementing two ExpressLanes from the 405 Freeway Interchange to 605 Freeway Interchange
- Project Environmental Clearance April 2021
- Construction Manager/General Contractor (CMGC), Final Design (PS&E), Roadside Toll Collection System (RTCS), and Program Management Support Services (PMSS) procurements are all in process.



Metro





Highway Projects Nearing Construction

- Soundwall Package 10 (IFB May 2022)
- I-605 South Street (IFB July 2022)
- I-605 Beverly (IFB November 2022)
- SR-91 – Shoemaker to Alondra (IFB June 2023)
- SR-91 Atlantic to Cherry (IFB November 2022)

CMSS - SR-91 Projects (RFP July 2022)





Union Station Forecourt/Esplanade



Metro

- Reconstruct Alameda and Los Angeles Streets along frontage of Union Station with widened sidewalks for pedestrian and bike paths.
- Streetscape, lighting, and traffic upgrades.
- 37' wide raised crosswalk on Alameda to enhance pedestrian and bicycle access and safety between Union Station and surrounding communities.
- Design/Bid/Build
- Budget: \$30 million
- Out to Bid: Summer 2022

G- Line BRT Improvements

- Railroad-Type Gates at 35 locations
- Aerial Stations and grade separations at Sepulveda & Van Nuys
- Multi-modal connection to ESFV LRT Terminal Station on Van Nuys
- Up to 16 min savings in bus travel time
- \$390M Funding available
- Conceptual engineering complete
- Progressive Design Build contract in procurement process
- Start construction 2023, complete 2026



East San Fernando Valley LRT

6.7 Mile new LRT from the G-Line at Van Nuys to Pacoima

11 new stations

NEPA/CEQA Environmental complete

Preliminary engineering complete

CMSS in procurement/Scoping: Ongoing

Industry Review May 2022

Progressive Design Build contract will be advertised July 2022





Capital Projects in Planning

West Santa Ana Branch LRT

20 Mile new LRT with 12 new stations

Initial LPA and segment from Pioneer to A-Line/Slauson approved by Board

EIR process ongoing

Federal New Starts pipeline

Project Delivery Selection underway

2023 Groundbreaking

Finish 2033-35



C (Green) Line LRT Extension

4 Mile extension to South Bay with two new stations

Release Draft EIR Winter 2022

Project Delivery Selection in process

Contracting Strategy: 2023

2026 Groundbreaking

Finish 2030/33



Sepulveda Transit Corridor

Project study area: G-Line/Sepulveda south to Expo/Sepulveda (along 405)

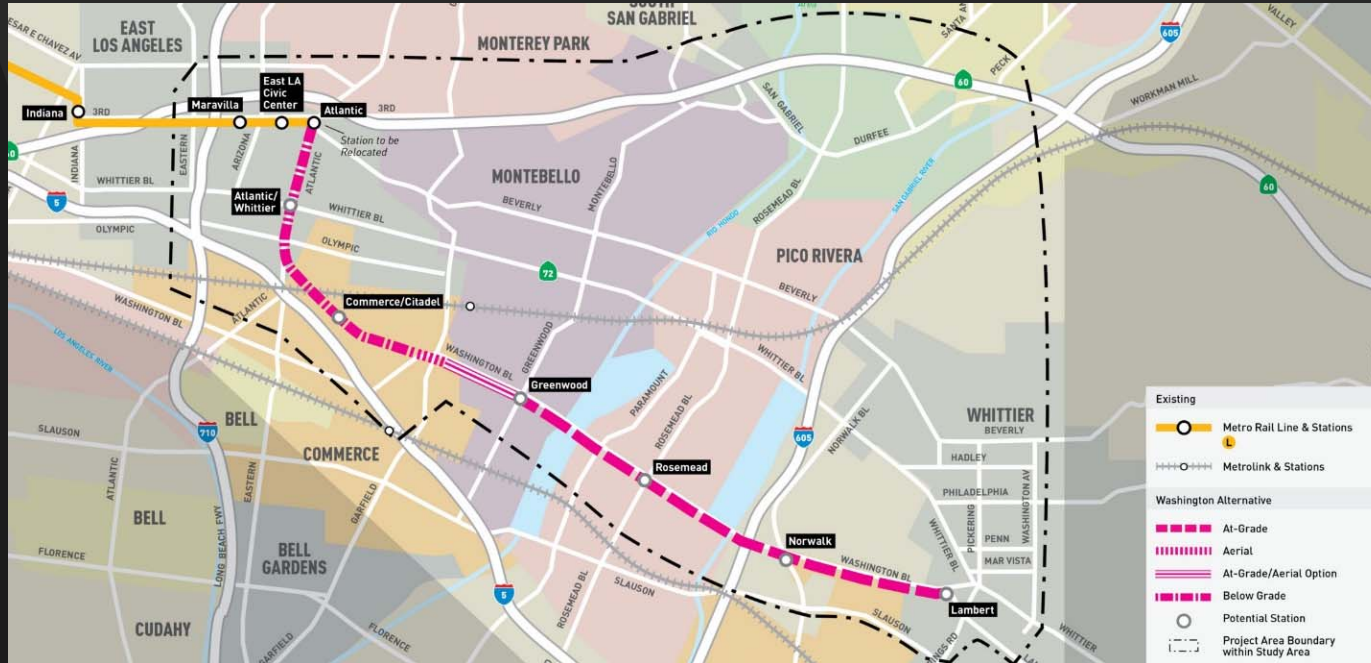
EIR process underway, Project scoping closed February 2022

Two PDA teams moving initial project concepts forward

Project Complete 2033-35



Eastside Phase II LRT Extension



10 Mile LRT extension with 6 new stations

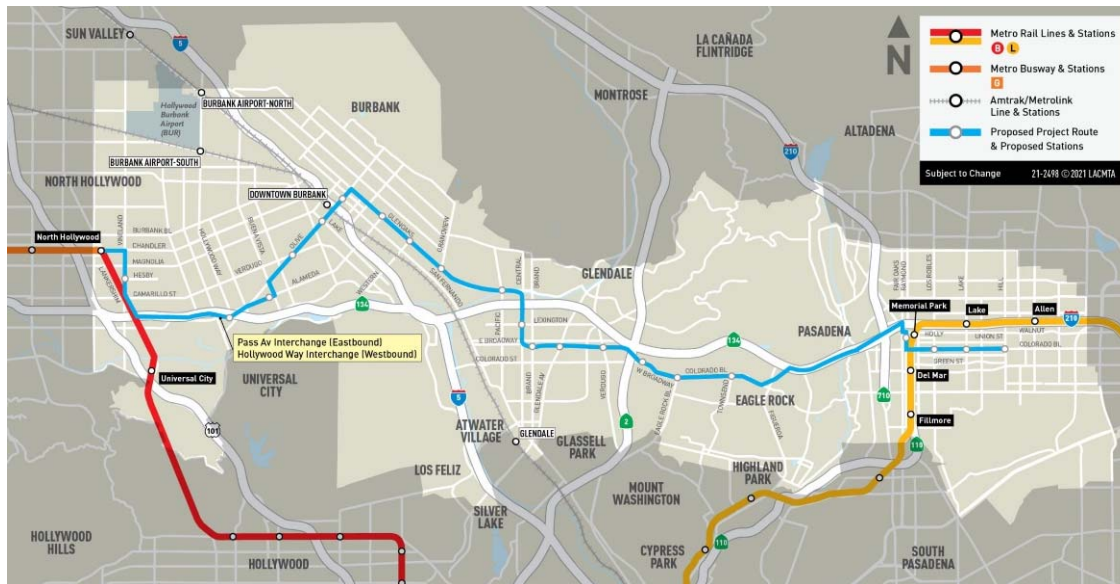
Gold Line east terminus to Whittier

Draft EIR will be released Spring/Summer 2022

Project Delivery Selection Underway for 2023 contracting strategy

Groundbreaking 2028 with opening 2035/37 unless accelerated

New BRT: NoHo to Pasadena



Street running BRT from North Hollywood to Pasadena

20 miles with 23 stations

\$286 million in Measure M funds

Final EIR: May 2022

Delivery Method Selection in Process

Depending on method, procurements in late 2022 and early 2023

Scheduled to complete 2025 Project Opens 2025

New BRT: Vermont Transit Corridor

Environmental/Scoping
Underway

Begin Construction – 2023

Complete - 2026





LA River Path

- 8-mile path from Elysian Valley to City of Maywood
- Environmental Phase: Ongoing
 - Release of Draft EIR: Summer 2022
 - LPA Adoption: Spring/Summer 2023
- Final Design, Permitting, Acquisition: 2022 - 2025
- Begin Construction: 2025
- Project Opens: 2028



Thank You

This is an aerial architectural rendering of a large-scale transit and urban development project. The central feature is a long, modern transit station with a glass and steel facade, situated beneath a large, curved overpass. To the left of the station is a large, multi-level parking lot filled with numerous cars. To the right, there's a landscaped area with greenery, trees, and several blue-roofed structures, possibly bus stops or smaller transit facilities. The surrounding area includes various other buildings, roads with traffic, and a large, open lot with parking spaces. The overall scene depicts a comprehensive transportation hub integrated into an urban environment.