

Port of San Diego Project Updates & Master Plan

Cid Tesoro

V.P., Facilities & Engineering

Jason Giffen

V.P., Planning & Environment

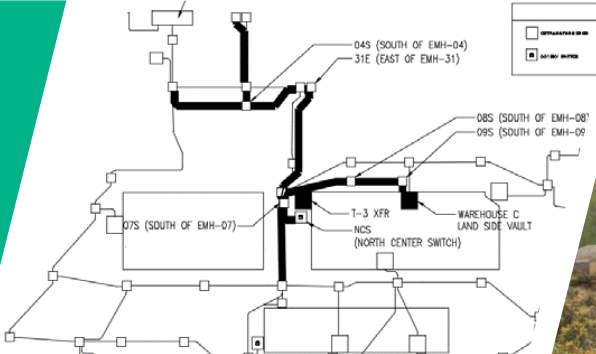


PORT of
SAN DIEGO
Waterfront of Opportunity



Projects on the Horizon

Economic Recovery – Tenant Development



Economic Recovery Program

Electrical Improvements at TAMT Phase 3

ESTIMATED COST - \$2,000,000

SCOPE

- 1955-era 12 kV electrical distribution system with outdated systems included paper insulated cables, manual oil-filled switched, and asbestos-cement conduit
- Portions of system are considered hazardous to maintenance personnel, and it is difficult to find parts or trained professionals to service
- Replace duct banks, electrical vaults, a substation, switchgear, transformers, conduit, and cabling from SDG&E feeder to loop



Electric Cranes

- First all electric Kone cranes in the US
- Upwards of 9 receptacles
- Place new conduits
- Modify pad locations to handle weight of cranes



Structural Repairs at NCMT Berth 24-11

ESTIMATED COST - \$11,000,000

SCOPE

- Replace existing asphalt paving with concrete cast over deck
- Drive pipe piles through existing deck and over existing concrete piles
- Replace edge beam, fender system, and mooring hardware
- Construct Shore Power Unit
- Construct storm water BMP for berth runoff

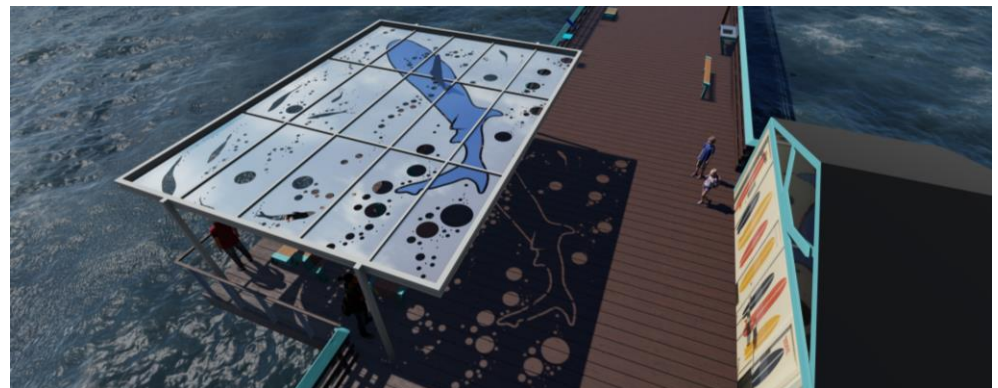


Imperial Beach Pier Enhancement Project 2

ESTIMATED COST - \$1,600,000

SCOPE

- Build restroom pier extension shade structure
- Replace pier end railings
- Place historical marker

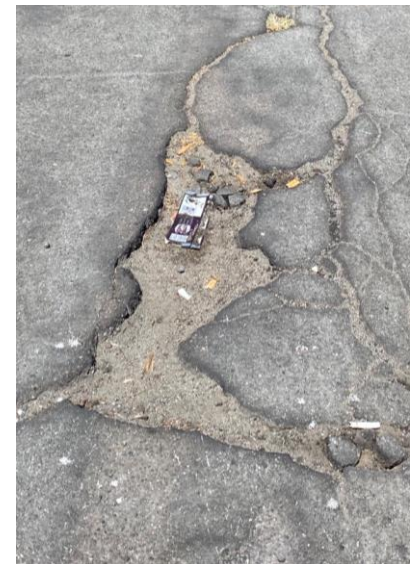


Pavement Improvements at Shelter Island Parking Lots

ESTIMATED COST - \$1,050,000

SCOPE

- Address pavement damage in 4 parking lots
- 3 types of work to address varying levels of damage
 - Full depth pavement reconstruction
 - 2" Mill and overlay
 - Slurry/Seal Coat



Chula Vista Bayfront



Sweetwater Park (rendering)



East Harbor Island Redevelopment

Sunroad Hotel



6/14/2022

Future Projects Harbor Park (rendering)

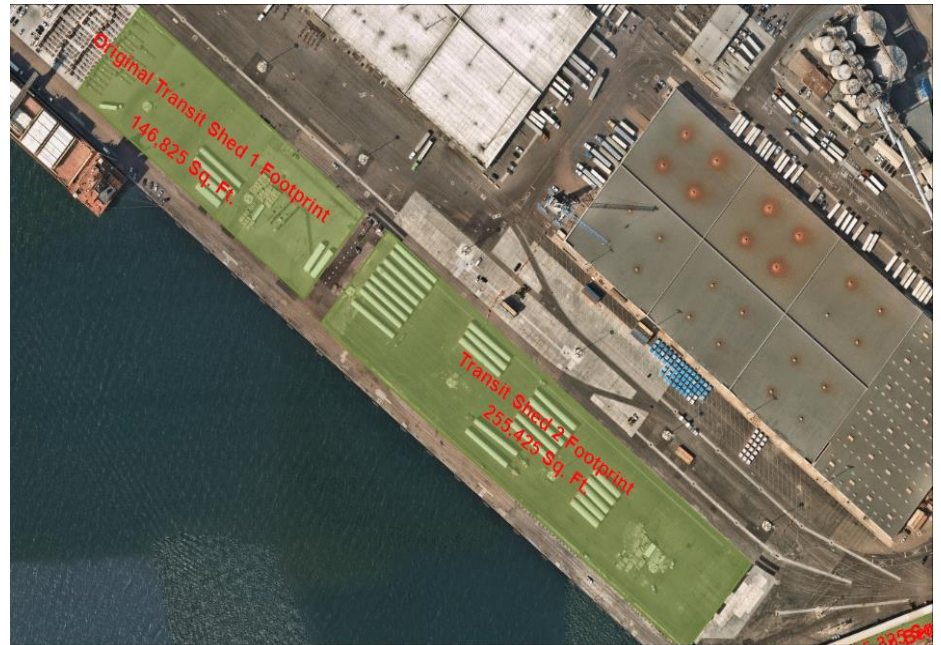


TAMT Pavement Improvement

ESTIMATED COST - TBD

SCOPE

- Place approximately 44,000 sf of concrete
- Place utility lines and other subsurface work





Thank you!