



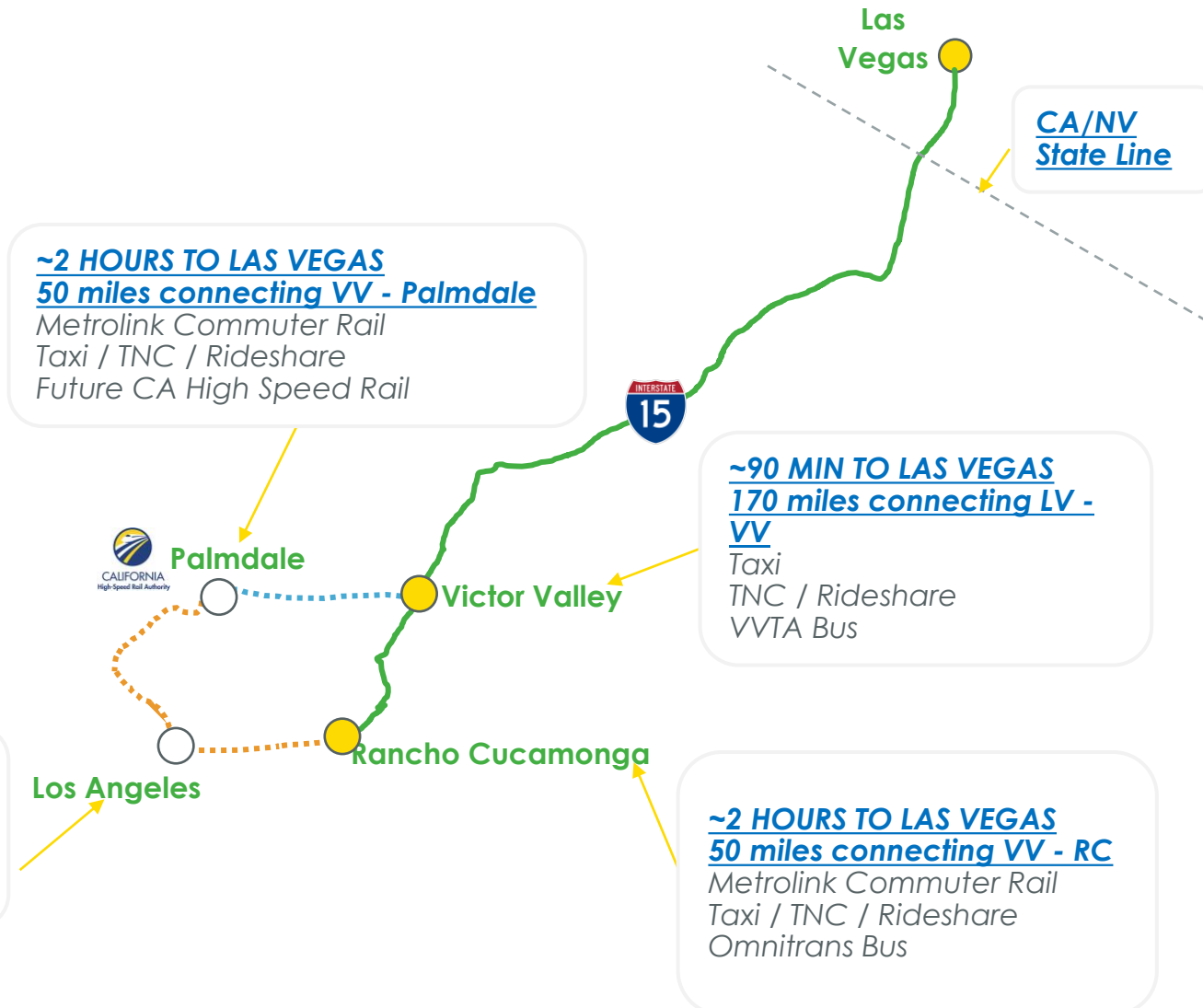
Project Update
June, 2022



High-Speed Travel Between Southern California and Las Vegas

Greener, faster, more convenient travel

- Brightline West Stations
- Brightline Partner Stations
- Brightline West Route
- ⋯ Metrolink Route
- ⋯ High Desert Corridor Route



~2 HOURS TO LAS VEGAS
50 miles connecting VV - Palmdale
 Metrolink Commuter Rail
 Taxi / TNC / Rideshare
 Future CA High Speed Rail

~90 MIN TO LAS VEGAS
170 miles connecting LV - VV
 Taxi
 TNC / Rideshare
 VVTA Bus

~3 HOURS TO LAS VEGAS
 Metrolink Commuter Rail
 Taxi / TNC / Rideshare
 LA Metro Bus
 FlyAway Bus (to LAX)

~2 HOURS TO LAS VEGAS
50 miles connecting VV - RC
 Metrolink Commuter Rail
 Taxi / TNC / Rideshare
 Omnitrans Bus

Key Stakeholders

Federal Railroad Administration

- Environmental - NEPA
- Corridor safety approval
- Rolling stock regulatory approval

Apple Valley to Rancho Cucamonga

- SBCTA
- City of Rancho Cucamonga
- LA Metro and Metrolink

Federal Highway Administration Caltrans & NDOT

- Caltrans (185 miles) and NDOT (34 miles) participate in the NEPA and environmental process with and through FHWA.
- Multiple Agreements being advanced with each DOT – Right of Way, Design and Construction, Operations and Maintenance

Bureau of Land Management

- Land for substations in CA and limited parcels in NV including Vehicle Maintenance Facility

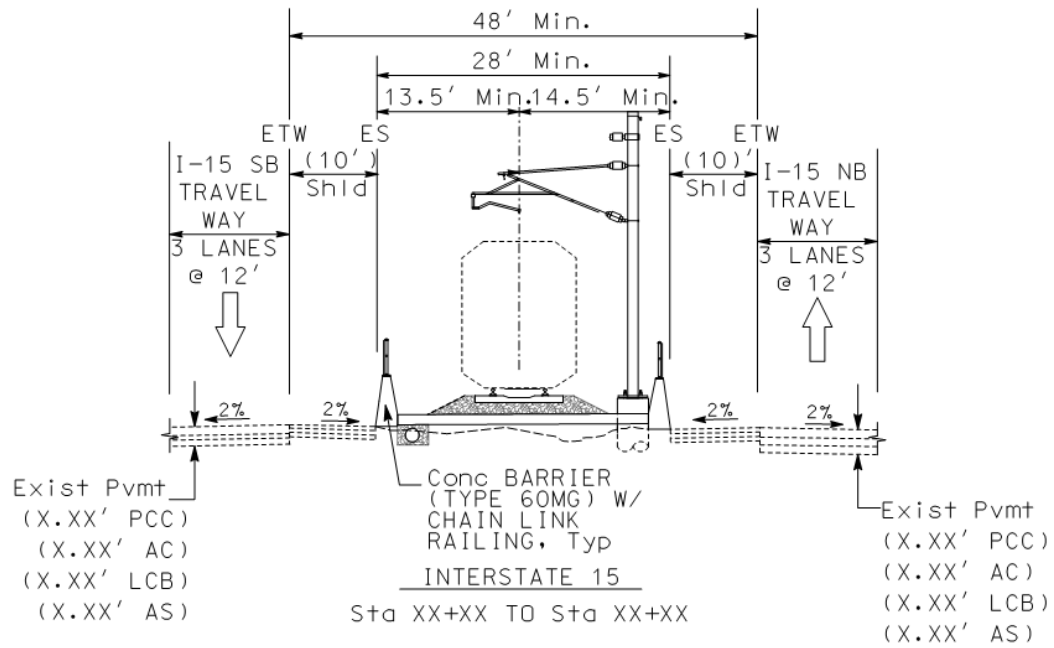
Surface Transportation Board

- STB certification in place
- Preempts state and local regulations and permit requirements including CEQA

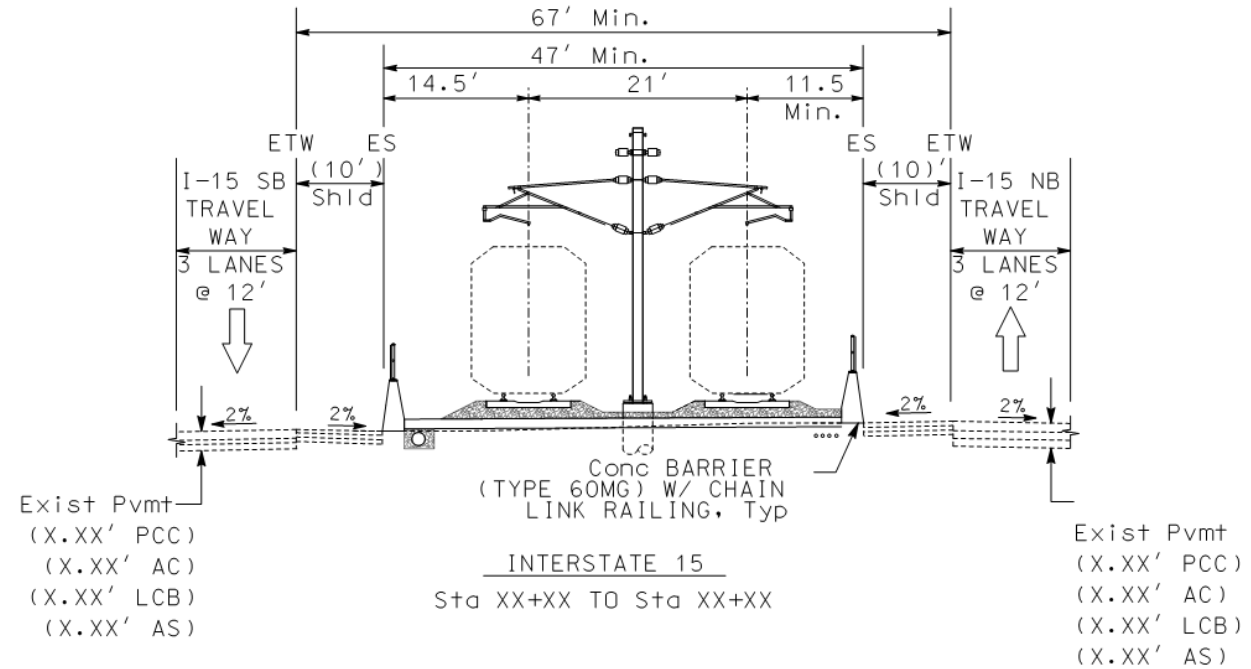
Railroads and Utilities

- UPRR and BNSF crossings
- Multiple utility crossings primarily power (SCE, LADWP and NVE)

Typical Sections

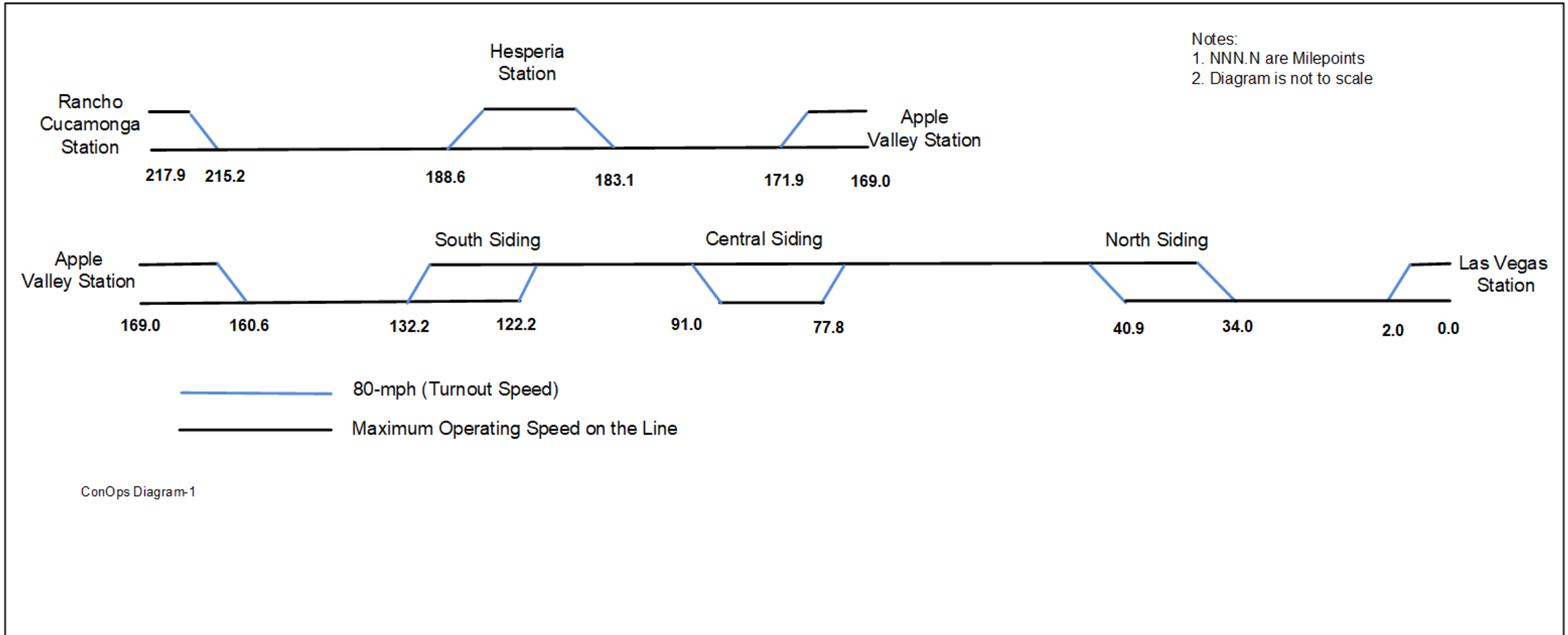


SINGLE TRACK



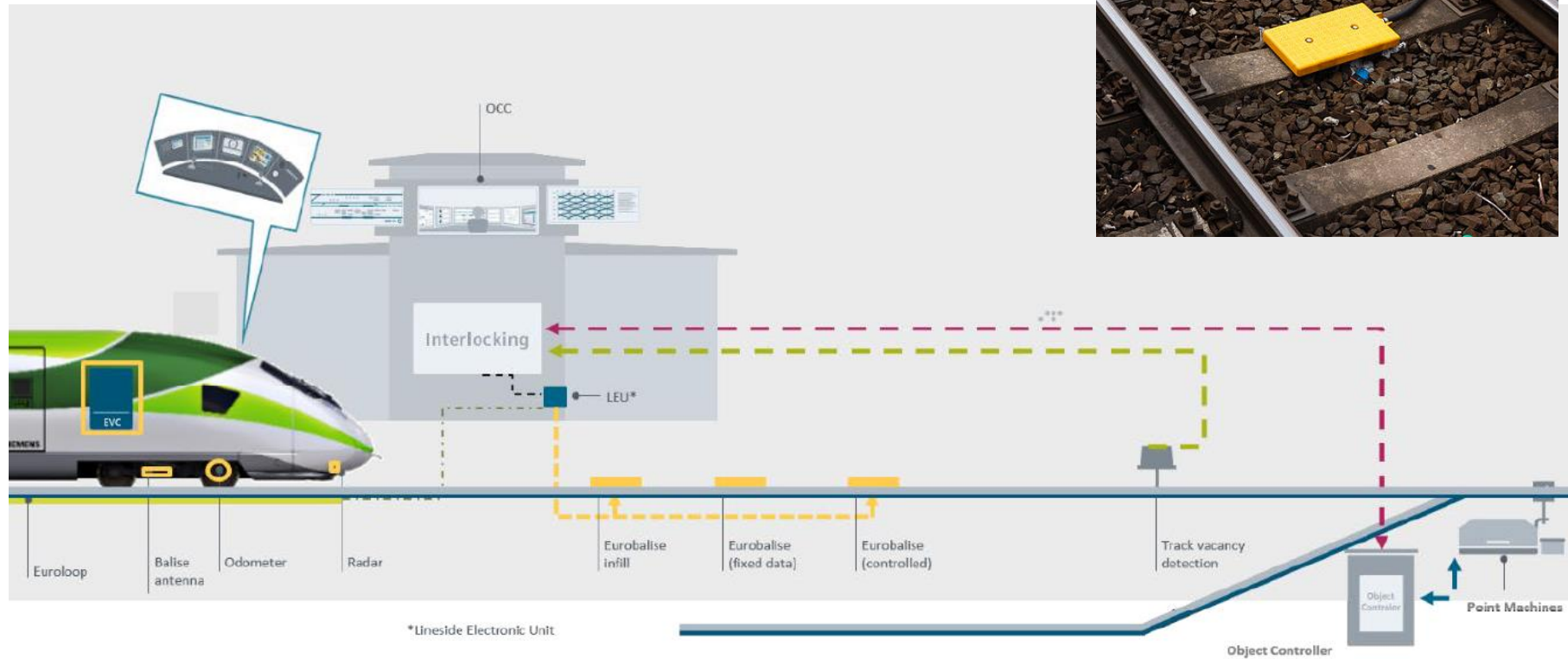
DOUBLE TRACK

Concept of Operations – Overview

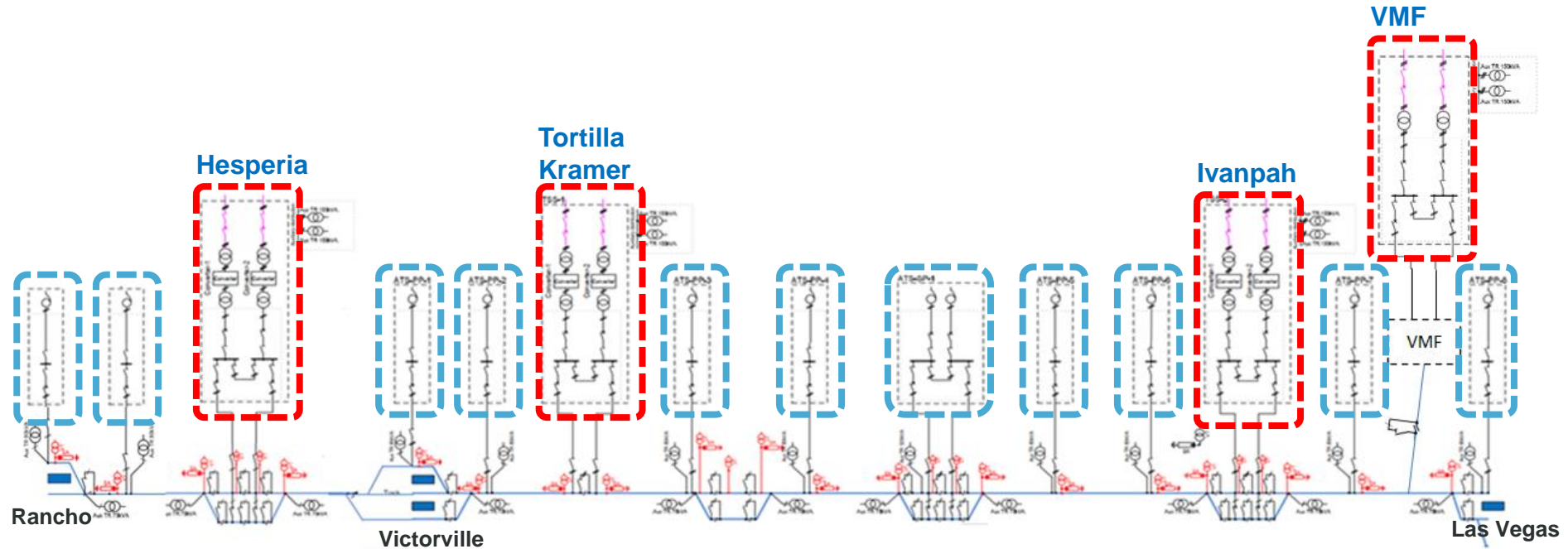


Total Single Track (miles)	166.3	76%
Total Double Track (miles)	51.6	24%
Total (miles)	217.9	100%

European Train Control System (ETCS) Level 1

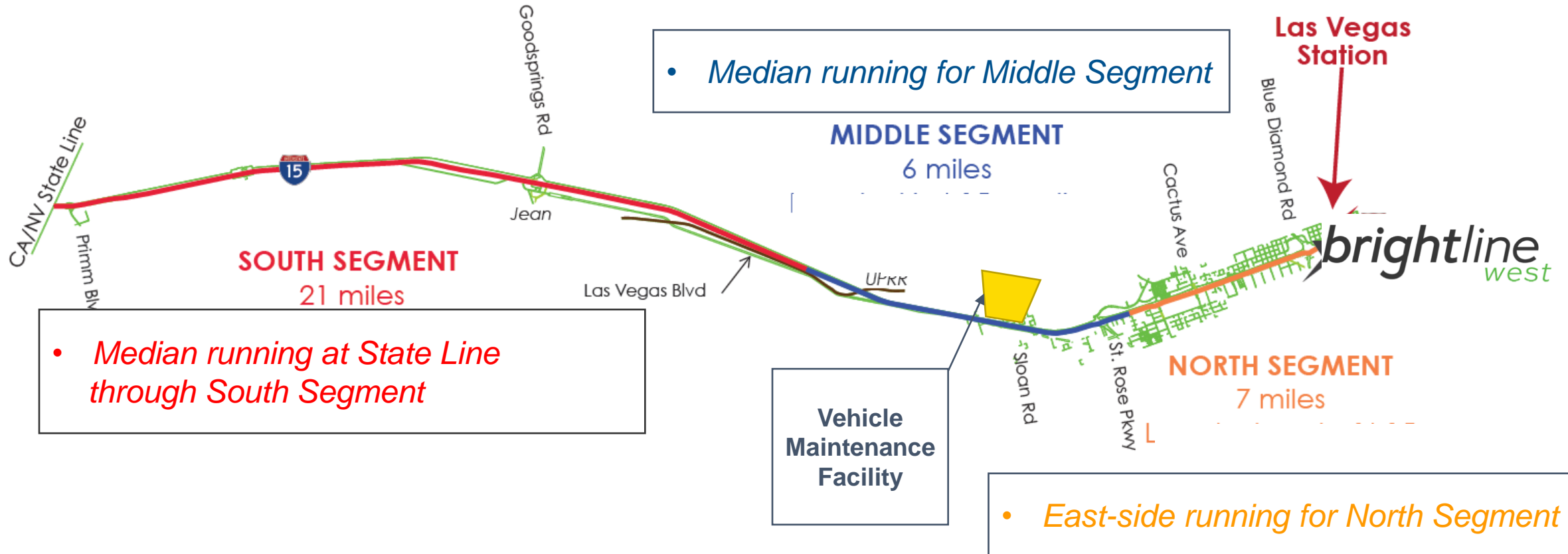


- Feed in Sites – Location of Traction power substations**
- ATS Sites – Voltage boosting to maintain Traction power voltage**

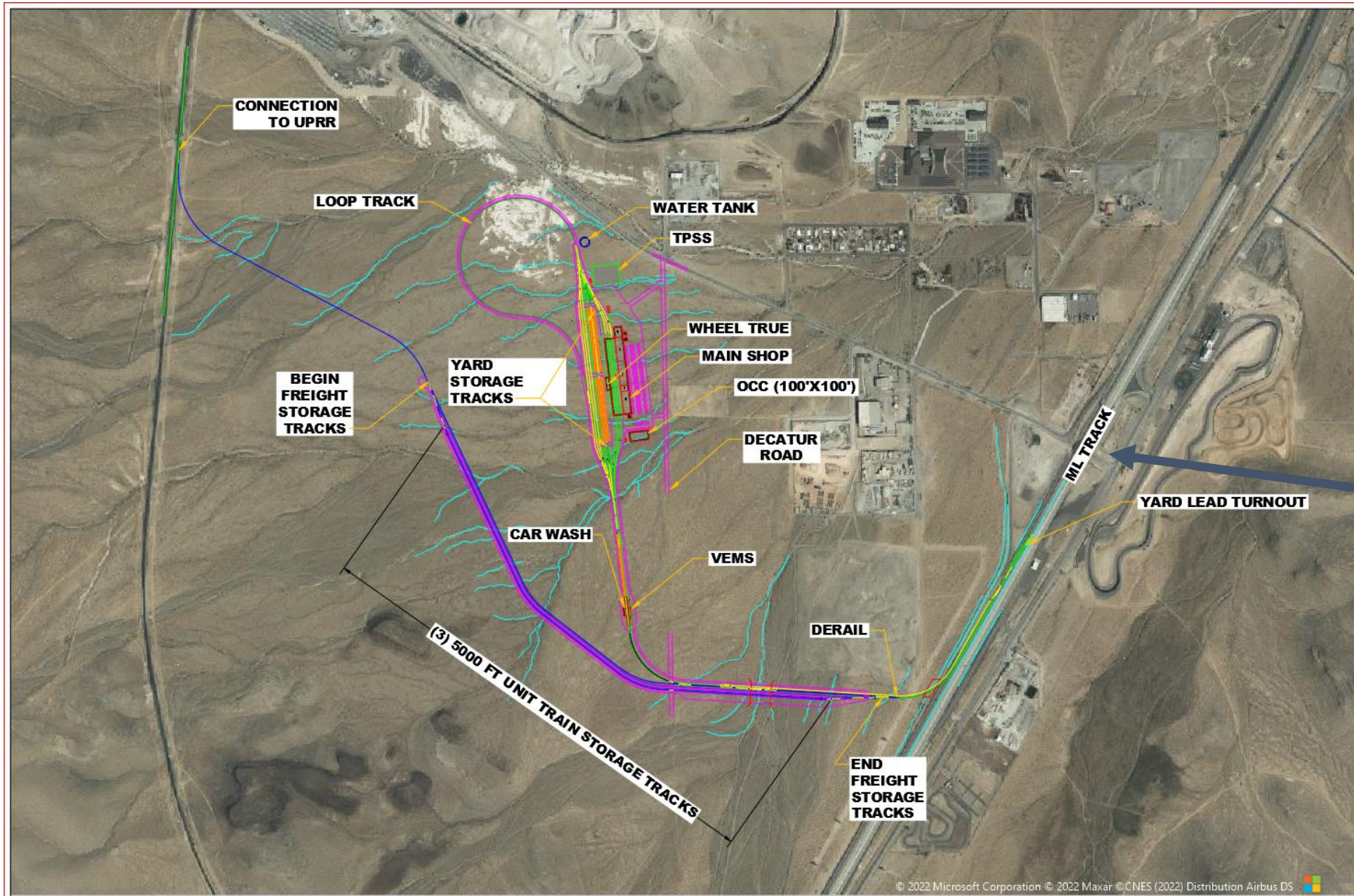


Rail Alignment:

In California: Primarily Median Running: In Nevada, per below

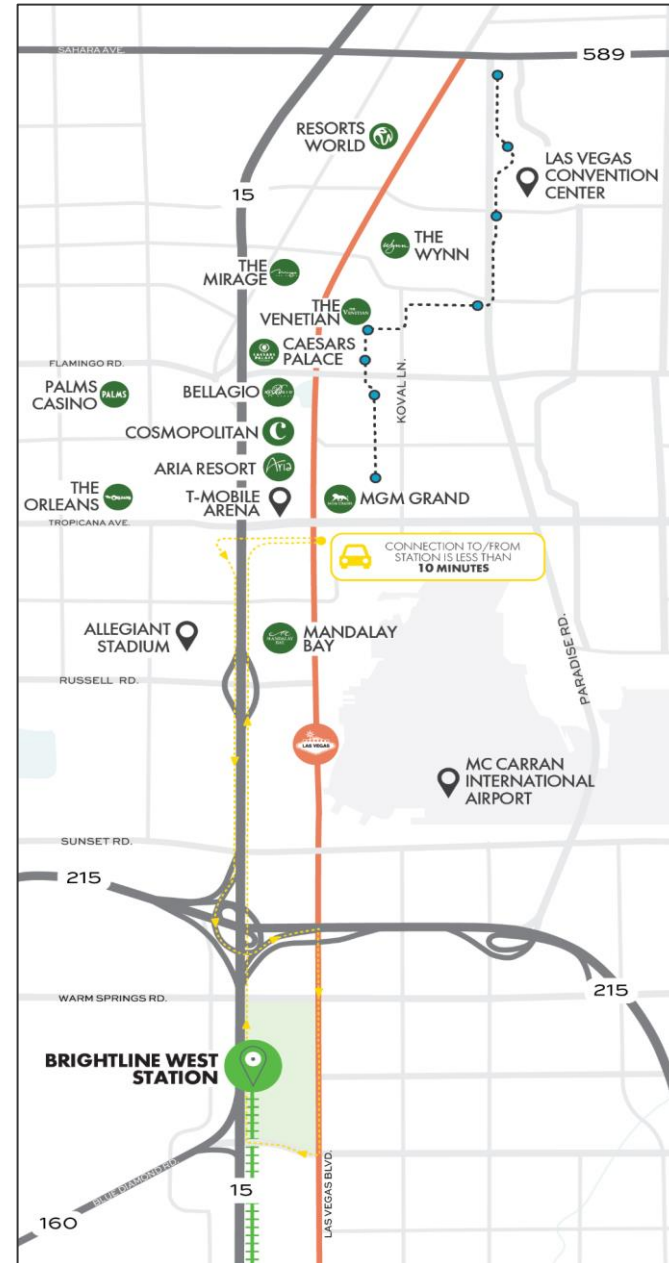
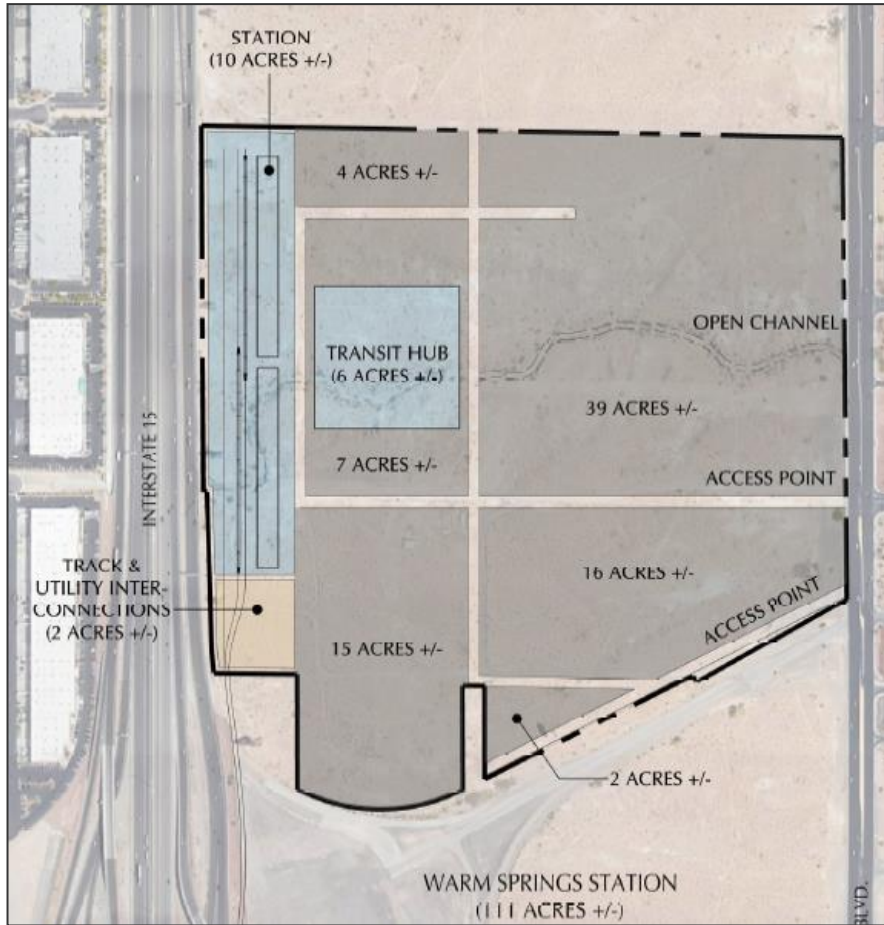


Planned Maintenance Facility (Depot) Site



I-15 and Sloan Interchange

Las Vegas Station Site



Victor Valley to Rancho Cucamonga Alignment

Eliminates need to build express lanes and provides a significant safety benefit by replacing car travel

Key Locations on Alignment:

1. Victor Valley station site
2. Hesperia inline station
3. Cajon Pass
4. I-15 and I-215 split
5. Begin express lanes footprint
6. Exit I-15 and move onto 8th St.
7. Rancho Cucamonga station



Rancho Cucamonga Station Site



Steps to Brightline's First Ride and Beyond

2H 2022

COMPLETE ACQUISITION OF RIGHT OF WAY AND PERMITS

~OCTOBER 2022

INTERCITY PASSENGER RAIL GRANT

NOVEMBER 2022

FRA COMPLETION OF ENVIRONMENTAL REVIEW & PERMITTING

1H 2023

BREAK GROUND ON THE SYSTEM

~3.5 years construction

OPEN FOR REVENUE SERVICE

2028

LOS ANGELES HOSTS SUMMER OLYMPICS



brightline
west

THANK YOU

BrightlineWestConstruction.com
outreach@brightlinewest.com
1-877-760-2702



GoBrightline.com