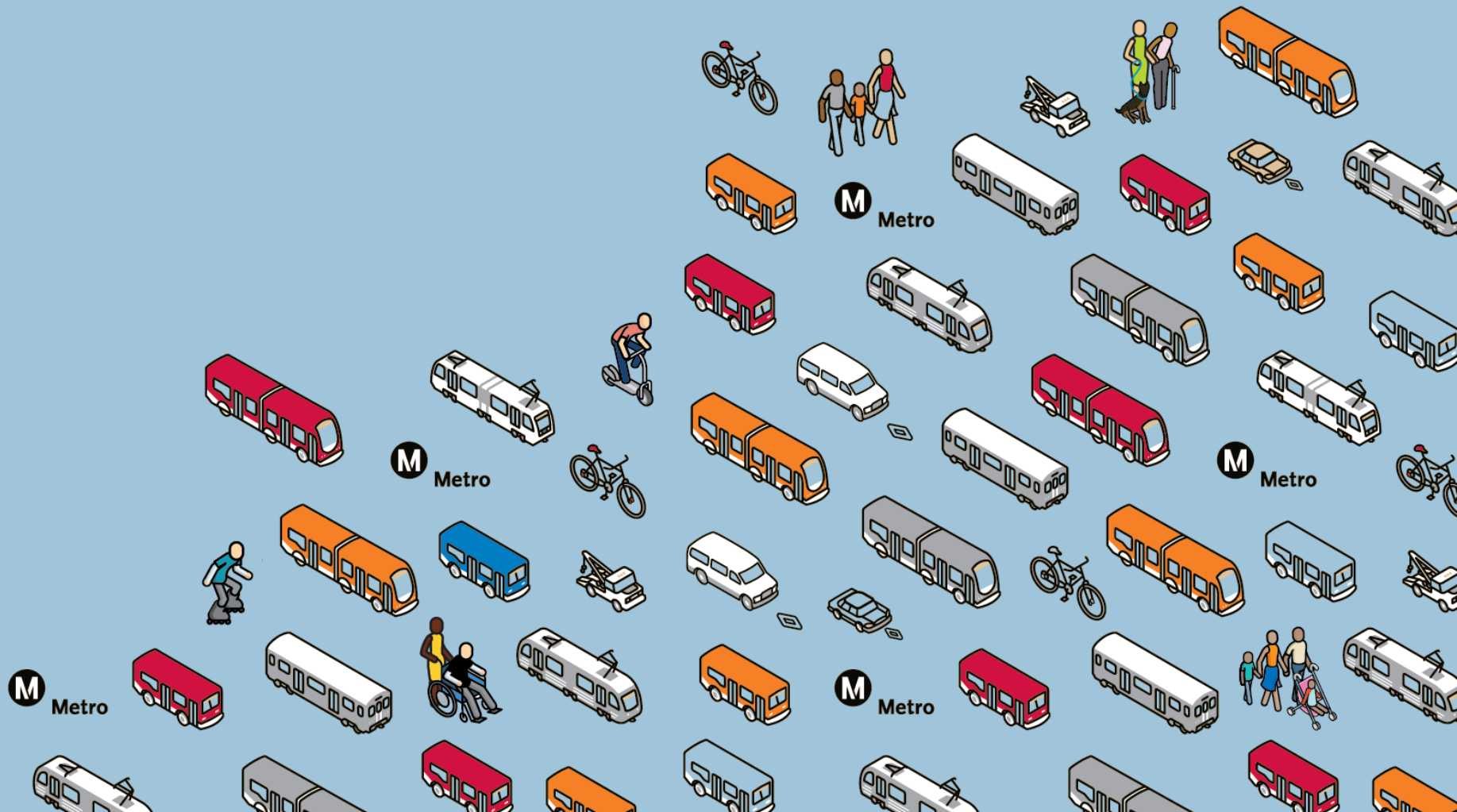


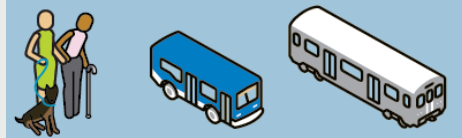
# Metro Roads & Highways Update

## Construction Network

June 28, 2022



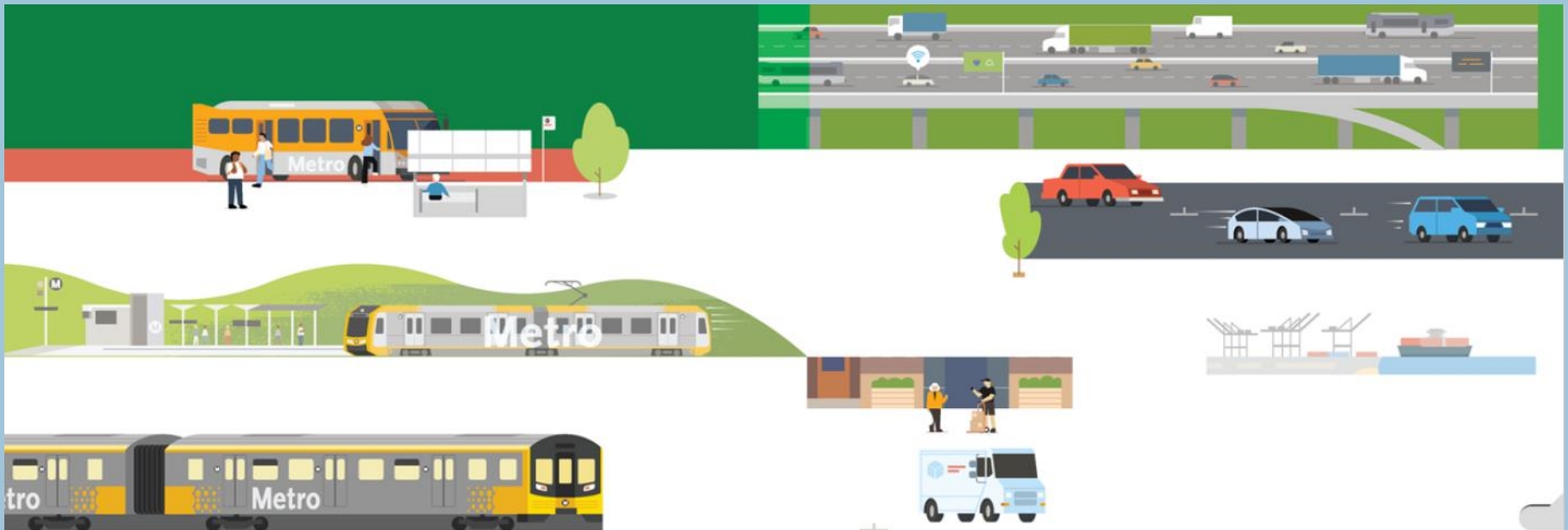
# Measure R & M



# A Changing Policy Landscape for Highways

---

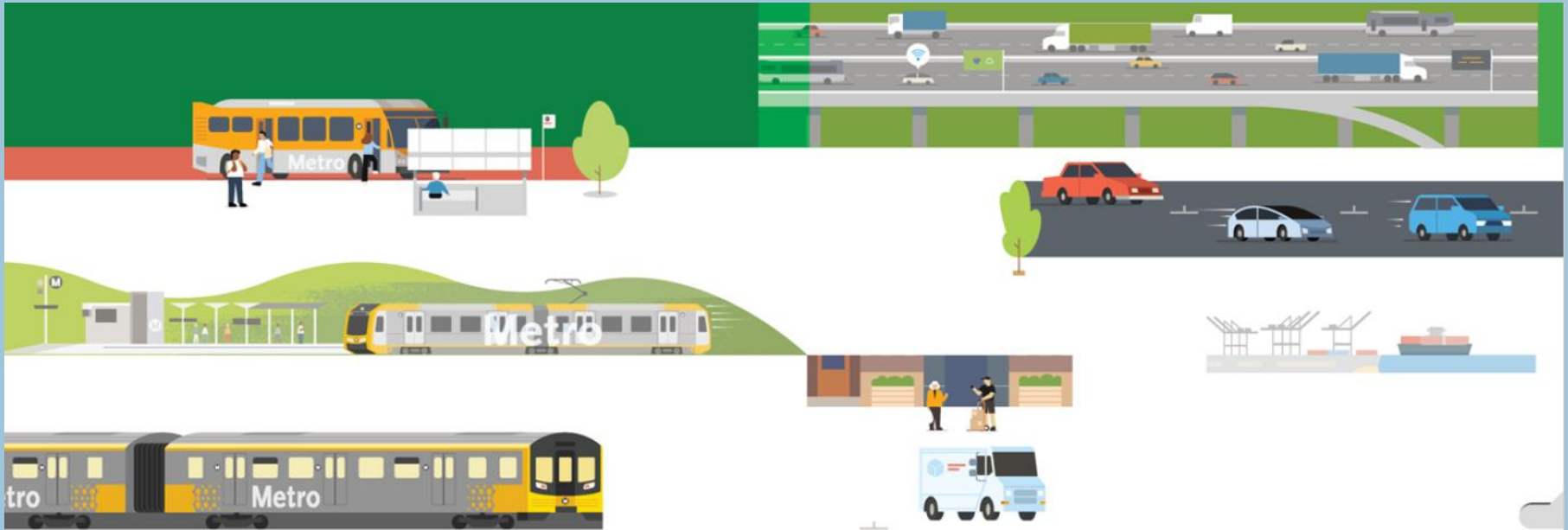
- **Regional Level** - Metro's Equity Platform; Highway Modernization Motion; other project-specific motions
- **State Level** – SB743, CAPTI, Transportation Plan 2050
- **Federal Level** – Justice40 Initiative



# Multiple Goals for Roads & Highways

---

- Congestion management
- Traffic Safety
- Active Transportation
- Goods movement
- Public health & reduction of GHG emissions
- Equity



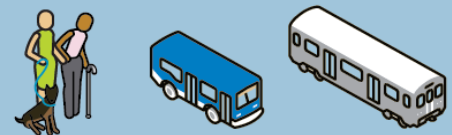
# Multimodal Highway Objectives

---

Advance the mobility needs of people and goods within LA County by developing projects and programs that support the broad range of Metro, state and federal goals in support of our local communities.

Work with communities impacted by historically inequitable highway investment decisions to reduce disparities and develop holistic approaches toward improving quality of life with minimal or no displacement during implementation.

Consider highway system investment within the context of a countywide multimodal, integrated planning vision that supports community needs.



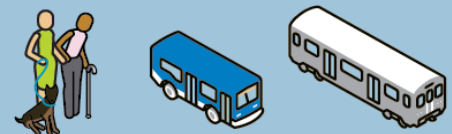
# Multimodal Highway Objectives

---

Develop meaningful public engagement strategies and tools that are inclusive of impacted communities and a wide range of stakeholders.

Partner collaboratively with Caltrans and regional stakeholders to create an LA County highway strategic plan.

Optimize use of existing highway facilities through technology and innovation to move people and goods in a way that supports health, climate, efficiency and sustainability goals.



# VMT Mitigation Program

---

## Goals:

- Identify programs that demonstrate CEQA-defensible VMT reductions
- Deploy a CEQA-defensible VMT Mitigation Program and VMT reduction strategies
- Develop a preferred a VMT mitigation quantification tool

Timeline: Board approval by Early 2024



# Metro Highway Projects

---

1. Major corridor-level capacity enhancements (re-scoped)
  - I-710 Corridor Project, I-605 Corridor Improvement Project
2. Large scale State highway improvements
  - SR-57/SR-60 Interchange Improvements, I-5 North HOV Lanes in North County
3. Medium/small size State highway operational improvements
  - I-605, I-405, SR-91 Hot Spots; I-710 Early Action Projects
4. Small-scale local operational improvements (subsides or Metro-led)





# Project Status

---

<i>I-5 HOV Lanes; SR-14 to Parker Road</i>	<i>Construction</i>
<i>I-605/South Street Interchange Improvements</i>	<i>Pre-Bid</i>
<i>I-710 Early Action Projects (Soundwalls)</i>	<i>PS&amp;E &amp; Construction</i>
<i>SR-57/SR-60 Interchange Improvements</i>	<i>PS&amp;E</i>
<i>SR-91 WB between Shoemaker and I-605</i>	<i>PS&amp;E</i>
<i>SR-72, Whittier Blvd., @Painter and S.F. Springs Rd.</i>	<i>PS&amp;E</i>
<i>SR-91, Eastbound, Atlantic to Cherry</i>	<i>PS&amp;E</i>
<i>SR-91/Central Avenue Improvements</i>	<i>PS&amp;E</i>
<i>I-605/Beverly Blvd. Interchange Improvements</i>	<i>PS&amp;E</i>
<i>I-605/Valley Blvd. Interchange Improvements</i>	<i>PS&amp;E</i>
<i>I-405, I-105 to Artesia Blvd.</i>	<i>PS&amp;E</i>
<i>I-405, I-110 to Wilmington</i>	<i>PAED</i>
<i>I-605 CIP Between I-105 and I-10 Improvements</i>	<i>PAED</i>
<i>I-710 Corridor Improvements</i>	<i>Planning</i>
<i>Various intersection improvement projects</i>	<i>PAED/PS&amp;E</i>



# Subregional Programs (R & M)

Subregion	Locally led	Metro led	Caltrans-led	Costs in Millions		
				Estimated Program Cost	Expenditures to Date	Remaining Cost
Arroyo Verdugo Subregion	57			\$170	\$50.3	\$119.7
Las Virgines/Malibu Subregion	32	-	-	\$308	\$141.1	\$166.9
South Bay Subregion	107	3	1	\$2,217.8	\$140	\$2,077.8
North County Subregion	15	1	-	\$329.9	\$66.7	\$263.1
Gateway Cities	104	12	-	\$2,607.7	\$357.2	\$2,250.5
San Gabriel Subregion	83	-		\$1,026.5	\$2	\$1,024.5
<b>Total</b>	<b>398</b>	<b>16</b>	<b>1</b>	<b>\$6,659.9</b>	<b>\$757.4</b>	<b>\$5,902.5</b>



# Summary of Upcoming Opportunities

Project Name	Phase	Projected Advertise Date
Construction Management Support Services (SR91 Projects)	Construction	July 2022
I-605 South Street Improvements	Construction	August 2022
Construction Support Services for I-210 Barrier Replacement	Construction	October 2022
EB SR-91 Atlantic to Cherry Improvements	Construction	November 2022
I-605 Beverly Interchange Improvements	Construction	January 2023
WB SR-91 Shoemaker to Alondra Improvements	Construction	June 2023

Project Name	Phase	Projected Start Date
Mission Drive and Las Tunas Intersection Improvement-City of San Gabriel	PAED, PS&E	November 2022
SR-14 Improvements – North County	PAED	December 2022
I-710 - Rosecrans Ave/Atlantic Ave & Artesia Blvd/Santa Fe Intersection Improvements - City of Compton	PS&E, CSS	March 2023
I-405 Aux Lanes (Wilmington to I-110)	PAED	April 2023
I-405 Corridor - PCH Hwy Mobility Improvements	PS&E	July 2024



Advertise/Start dates subject to change based on funding availability and/or future Metro board action.



