



Projects Update

DEPARTMENT OF RECREATION AND PARKS



City of Los Angeles Recreation and Parks

"We build healthy communities through people, parks and programs"



16K ACRES OF LAND

312

ATHLETIC
FIELDS

559 PARKS

26 SKATE PARKS

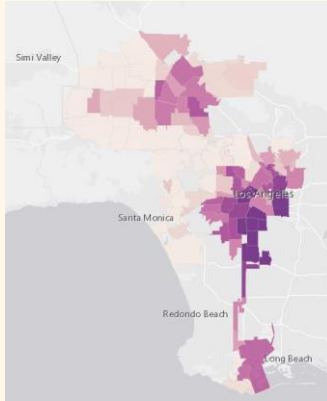
12

MUSEUMS

184 REC CENTERS



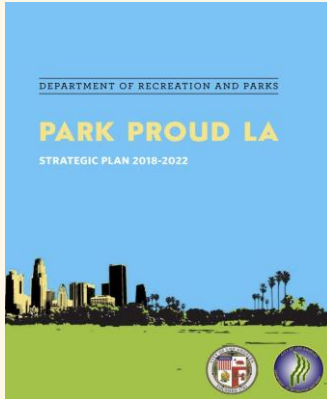
Park Equity



LA EQUITY INDEX

In 2020, the LA Controller releases the “**LA Equity Index**”, an assessment of socioeconomic, environmental, and educational access in Los Angeles’ various neighborhoods.

The map of data points highlights the most disadvantaged neighborhoods



STRATEGIC PLAN 2018-2022

To address this disparity, the Mayor and Recreation and Parks create a the **Strategic Plan 2018-2022** to develop parks and make investments in neighborhoods that lack access to open space, recreational programs, and public facilities.



Park Equity

PRIORITY GOALS:

1 PROVIDE SAFE AND ACCESSIBLE PARKS

2 OFFER AFFORDABLE AND EQUITABLE RECREATION PROGRAMMING

3 CREATE AND MAINTAIN WORLD CLASS PARKS AND FACILITIES

4 ACTIVELY ENGAGE COMMUNITIES

5 ENSURE AN ENVIRONMENTALLY SUSTAINABLE PARK SYSTEM

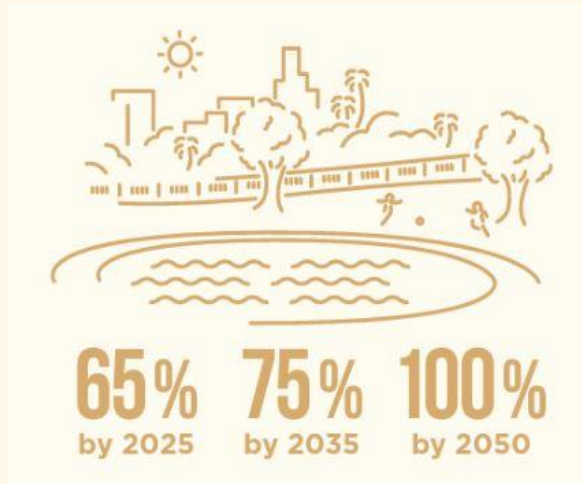
6 BUILD FINANCIAL STRENGTH AND INNOVATIVE PARTNERSHIPS

7 MAINTAIN A DIVERSE AND DYNAMIC WORKFORCE



10 Minute Walk

In 2017, City of Los Angeles signed a pledge with Trust for Public Land, the “**10-Minute Walk Campaign**”, to ensure that everyone is within a ½ mile walk to an open park or green space by 2050.



- As of 2022, **63%** of Angelinos are within a 10-minute walk to a park.
- The goal is for **100%** of Angelinos to be within range by 2050.



Landscaping and Water Conservation



LANDSCAPING

- Department has **190,000** trees
- **~800** new trees planted in the past two years



WATER CONSERVATION

- **21** synthetic fields installed past 5 years
- **107,420,000** gallons of water/year saved from using synthetic turf
- **2,100,000** gallons of water/year saved for an average synthetic soccer field



Deferred Maintenance Projects



Restroom Projects

Pre-Design: 14



Lighting Upgrades

In Construction: 3
Design-Build: 10



Childcare Projects

In Construction: 8
Completed: 2

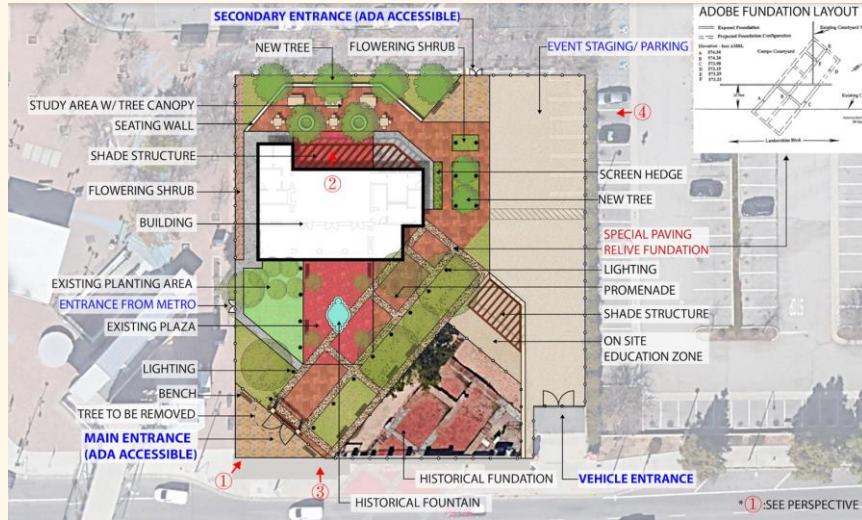


Playground Projects

In Construction: 5
Pre-Design: 10
Completed: 1



Campo De Cahuenga - Renovations

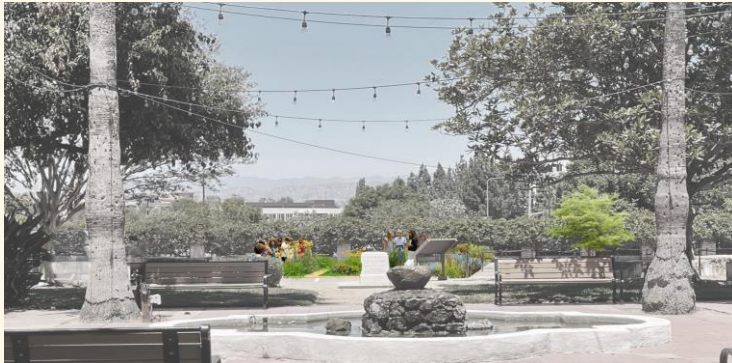


Scope of Work:

Site Improvements, Accessibility Upgrades, Building Refurbishments

Status: Pre-design

Cost Estimate: \$1.5M



First and Broadway - Civic Center Park



develop an approximately two acre vacant lot into an open space public park.

Scope of Work:

- Green spaces and trees
- Two story dining and concession building
- Accessible rooftop terrace
- 16 multi-functional canopies
- Storm-water management systems

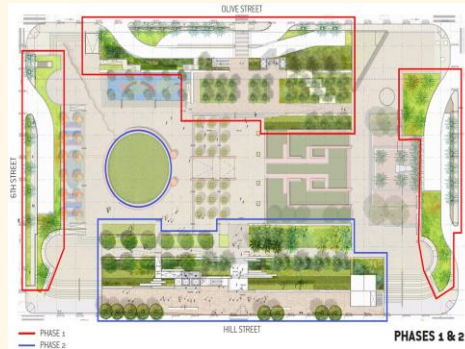
Status: In Design

Cost Estimate: \$25 Million



Pershing Square - Renovation

Pershing Square is LA City's oldest park, opening in 1866 as a public square. The five acre actively-programmed urban park is **walking distance to ~13,500 Los Angeles residents.**



Olive Street Modifications (Phase 1)

Scope of Work:

Complete redesign of existing structures which includes an open public plaza, children's play area, and community rooms.

Status: Bid and Award Phase

Cost Estimate: \$9 Million

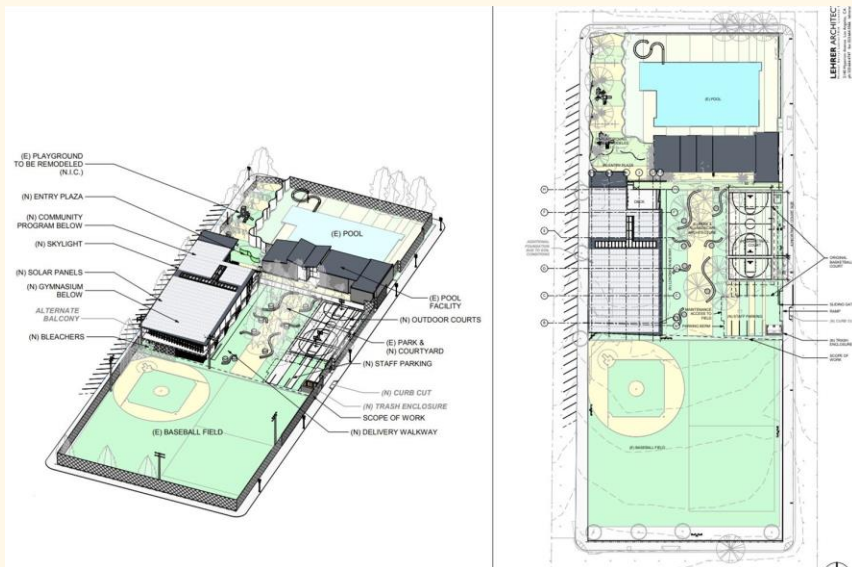


Hollywood Recreation Center - Gymnasium



Approximately three acre property with ~8,800 residents in 1/2 mile walking distance.

The center includes a **play area, multi-purpose field, gymnasium, basketball court, and swimming pool.**



Scope of Work:

New construction of a modern 13,000 sq ft gymnasium

Status: In Design

Cost Estimate: \$20 Million



Reseda Park Skate Facility



Scope of Work:

Development of an ice skating rink and roller hockey rink with associated structures.

Status: In Construction

Cost Estimate: \$17 Million





Thank you!

