



Padre Dam MWD

Michael Hindle | October 19, 2022

Construction Network

The District provides service to approximately
38,852
 Customer Accounts



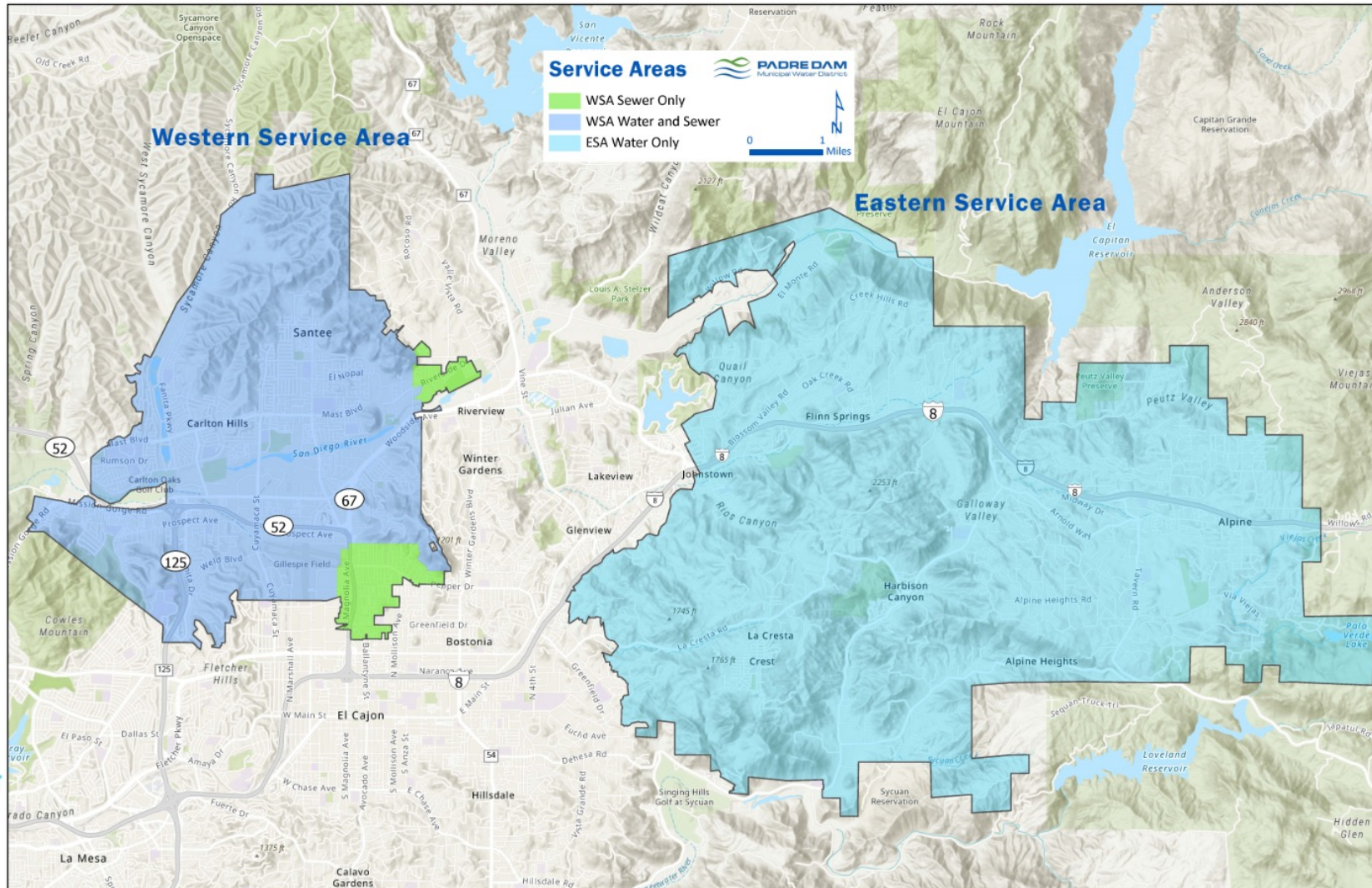
as of Fiscal Year 2022 including:

23,140 Water Connections

15,598 Sewer Connections

565 Fire Protection Services

246 Active Recycled Water Connections



Water

- 392 miles of mains
- 29 reservoir tanks
- 16 pumping stations
- 108.25 MG storage
- 100% imported drinking water
- 2000+ foot elevation gain

Wastewater

- 169 miles of mains
- 4 lift stations
- 1 pumping station
- 40% recycled by Padre Dam
- 60% treated by METRO

Recycled Water

- 27 miles of mains
- 1 reservoir tank
- 1.5 MG storage
- 2 MGD recycling plant
- Tertiary treatment process

300
site campground

7
lakes



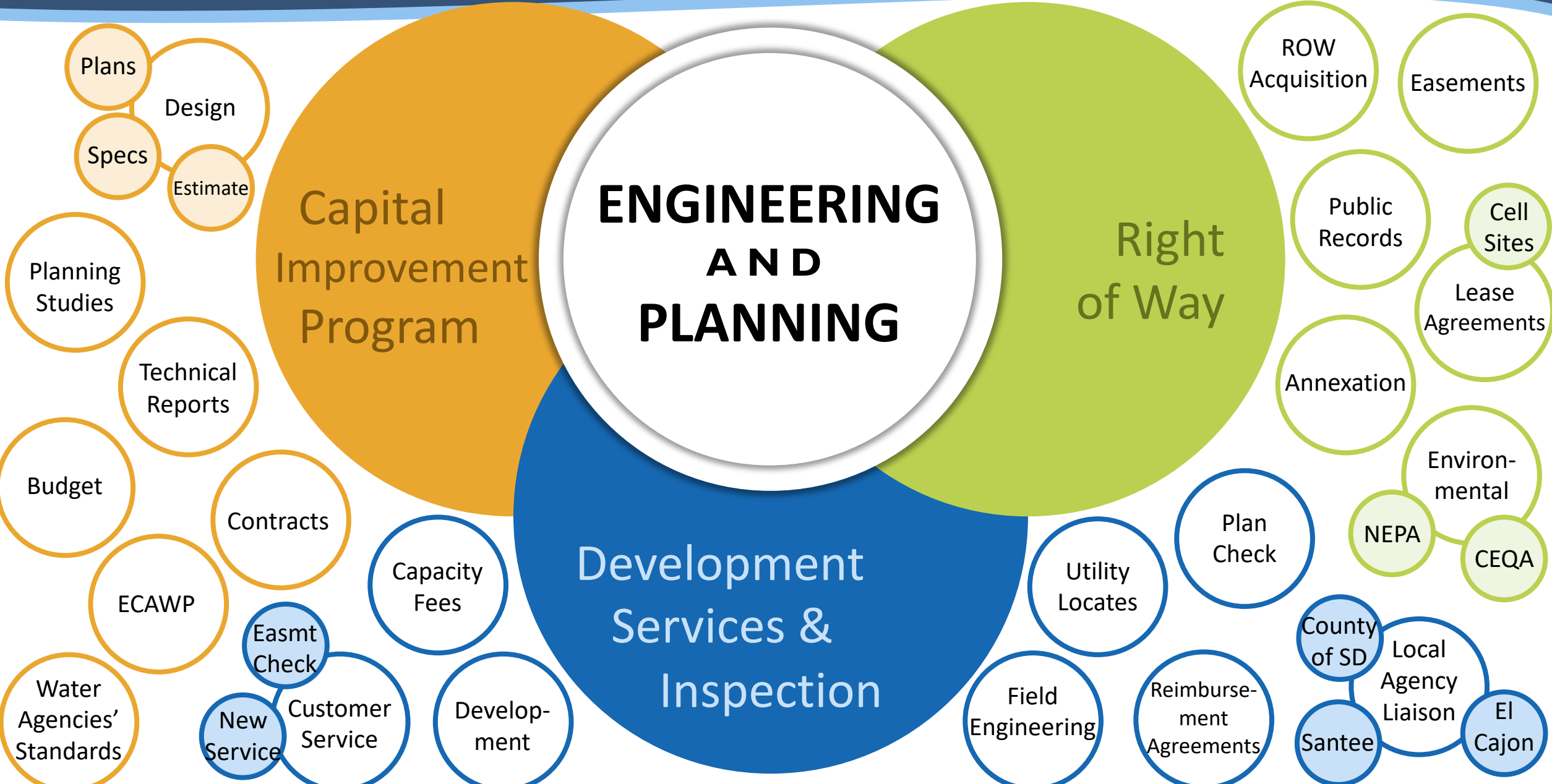
190
acres

10
cabins

Day-use recreation • Fishing & boating special events



ENGINEERING DEPARTMENT



Meet the Padre Dam Engineering Team



JTB Moneda
Director of Engineering & Planning




MICHAEL Hindle
Engineering Manager
Capital Improvement Program



LEWIS Clapp
Engineering Manager
Development Services



TBD
Right-of-Way Agent



KEYHEE Kim
Senior Engineer



TOM Martin
Engineering Technician



JOSH Oldenburg
Inspection Supervisor



ADELINA Sanchez
Engineer



VINCENT De Anda
Engineering Technician



SARAH Hargis
Construction Inspector



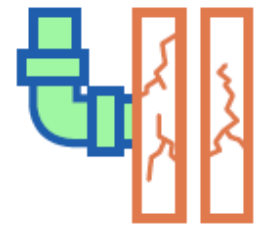
WILSON Lau
Engineer



JORGE Flores Huevo
Utility Locator



Ensuring safe, reliable water and sewer facilities



Refurbishing existing aging facilities



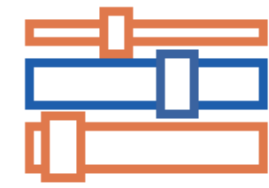
Prioritizing critical assets through condition assessment or replacement



Compliance with regulatory mandates



Supporting the Advanced Water Purification Program



Creating redundancy in water distribution and transmission systems

RELIABILITY – **R**ESILIENCY – **R**ATE PAYER AFFORDABILITY

Padre Dam Municipal Water District



MASTER PLAN

JUNE 2022

Fiscal Years 2023-2027
FIVE YEAR STRATEGIC BUSINESS PLAN

Securing a sustainable future.



PADRE DAM
Municipal Water District

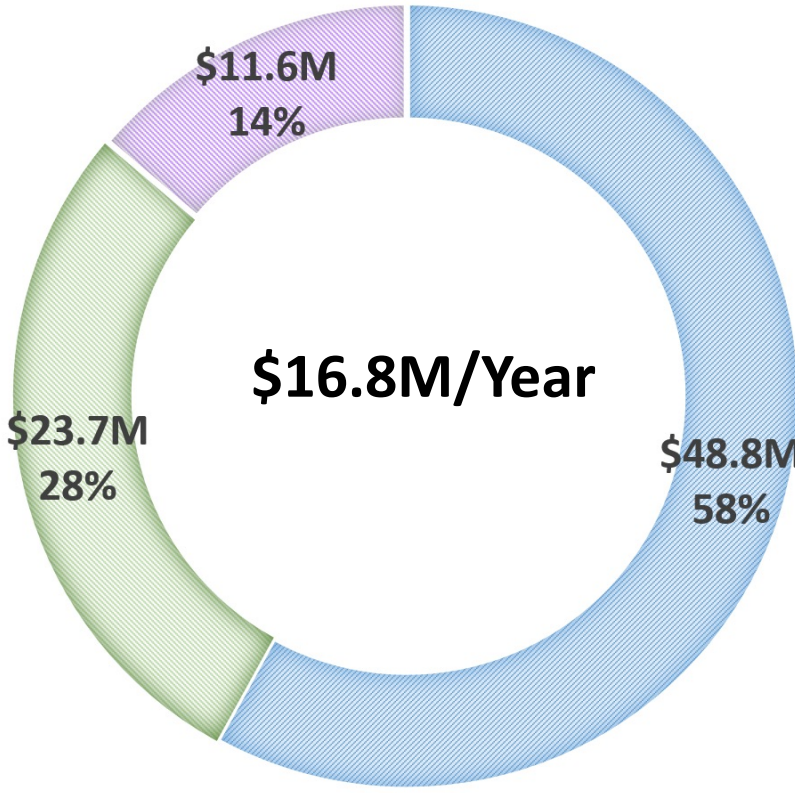


Fiscal Years 2023-2027 Capital Improvement Program Budget





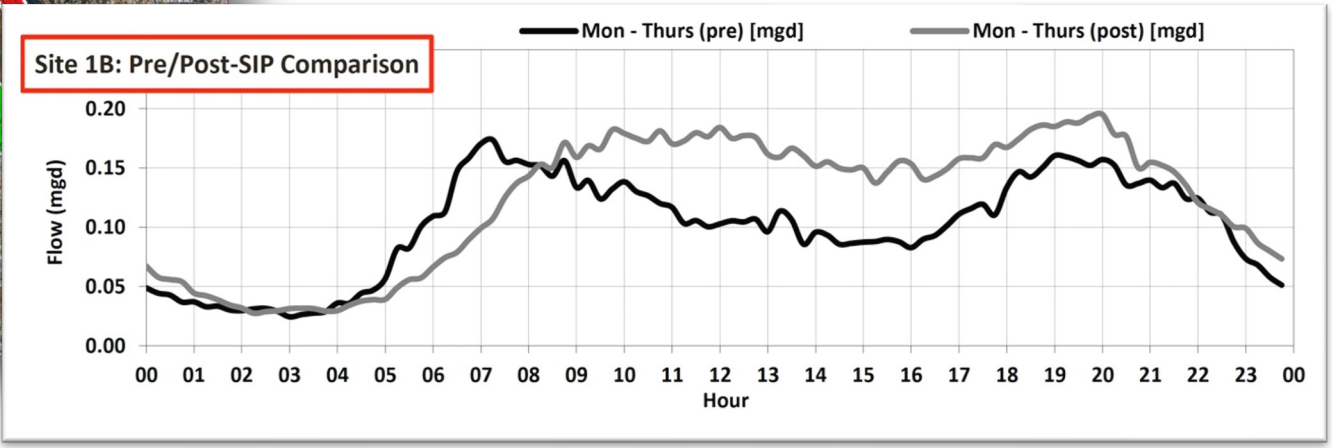
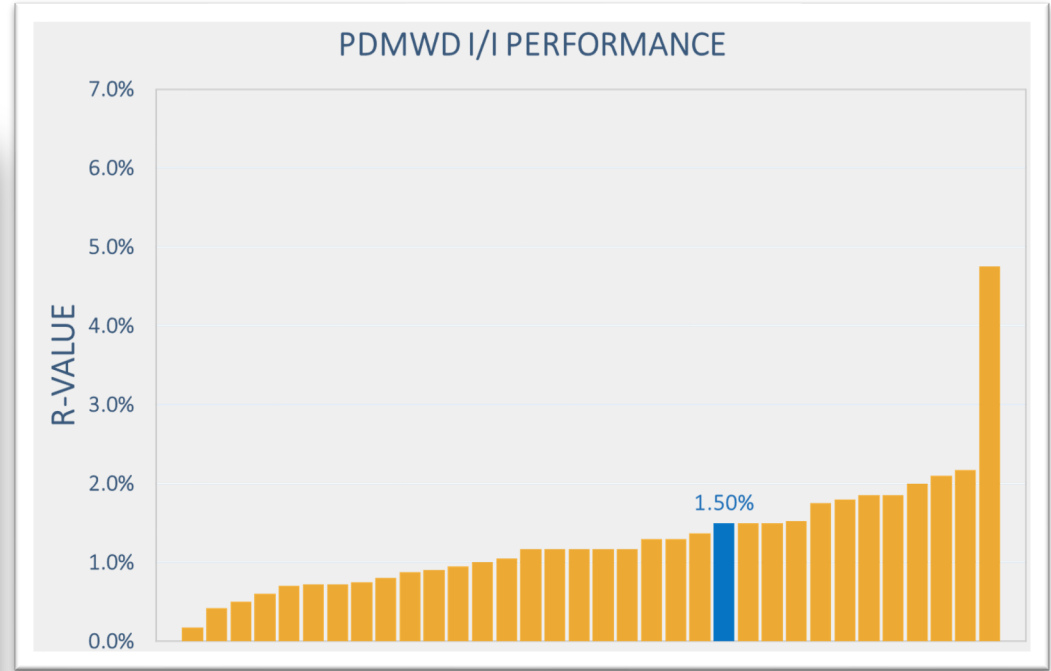
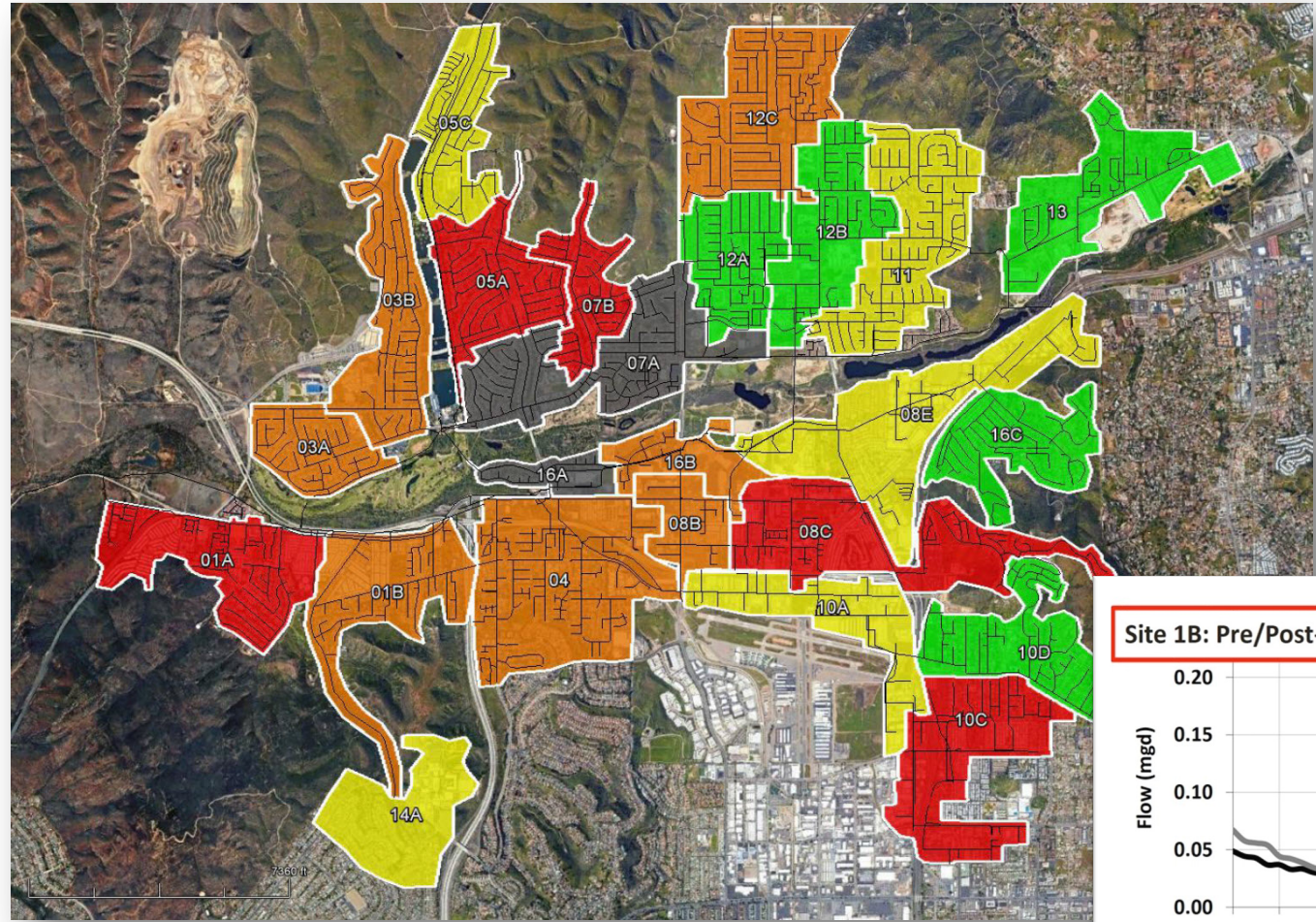
Fiscal Years 2023-2027
Capital Improvement Program Budget

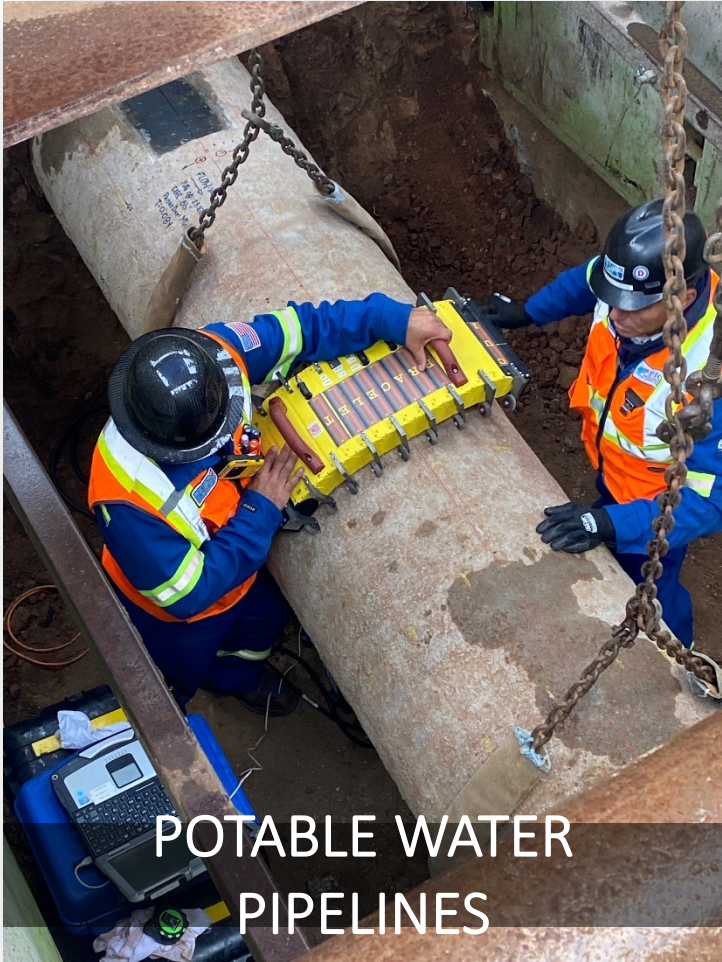


- Water
- Sewer
- Recycled Water

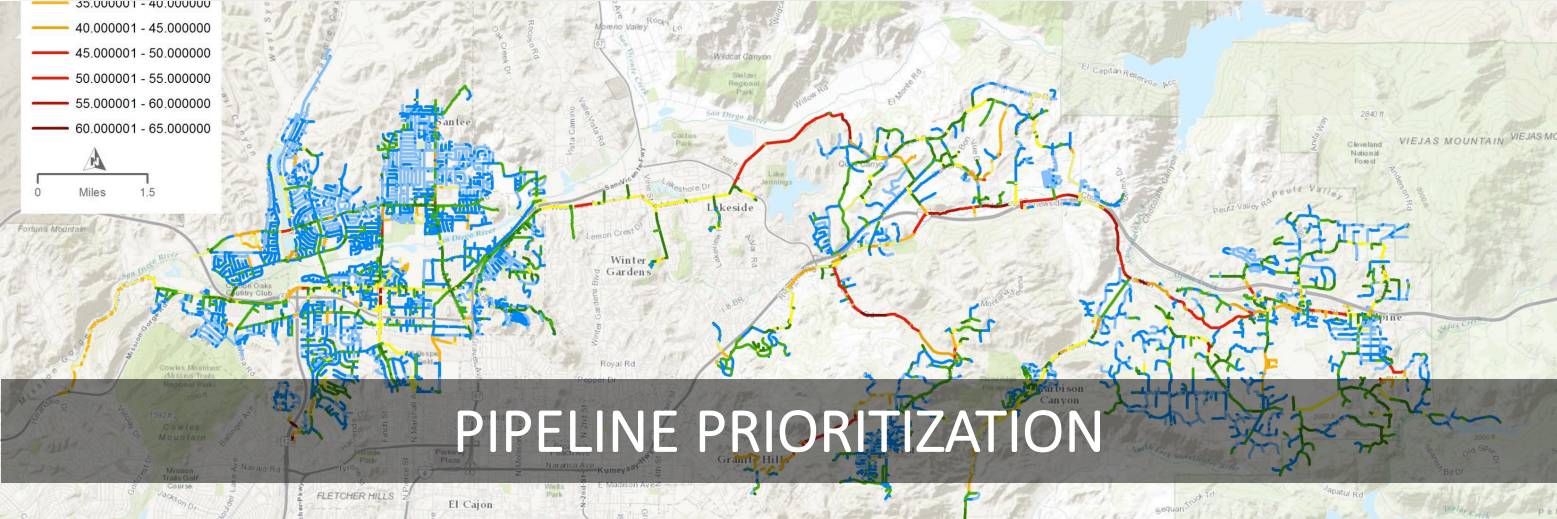
PLANNING PROJECTS & STUDIES

Temporary Sewer Flow Monitoring





POTABLE WATER PIPELINES



PIPELINE PRIORITIZATION



INVERTED SEWER SIPHONS

DESIGN PROJECTS



I-8 UNENCASED MAIN REPLACEMENT



PIPELINE REPLACEMENT AT BRIDGE CROSSINGS



JERRY JOHSON RESERVOIR



FANITA TERRACE RESERVOIR



**SLUDGE MAIN AND INVERTED
SEWER SIPHONS**

CONSTRUCTION PROJECTS



MOUNTAIN VIEW CONNECTOR PIPELINE



CORDIAL RD PIPELINE



**PUMP STATION
IMPROVEMENTS**



RIOS CANYON PUMP STATION SURGE TANK



LARGE DIAMETER VALVE REPLACEMENT

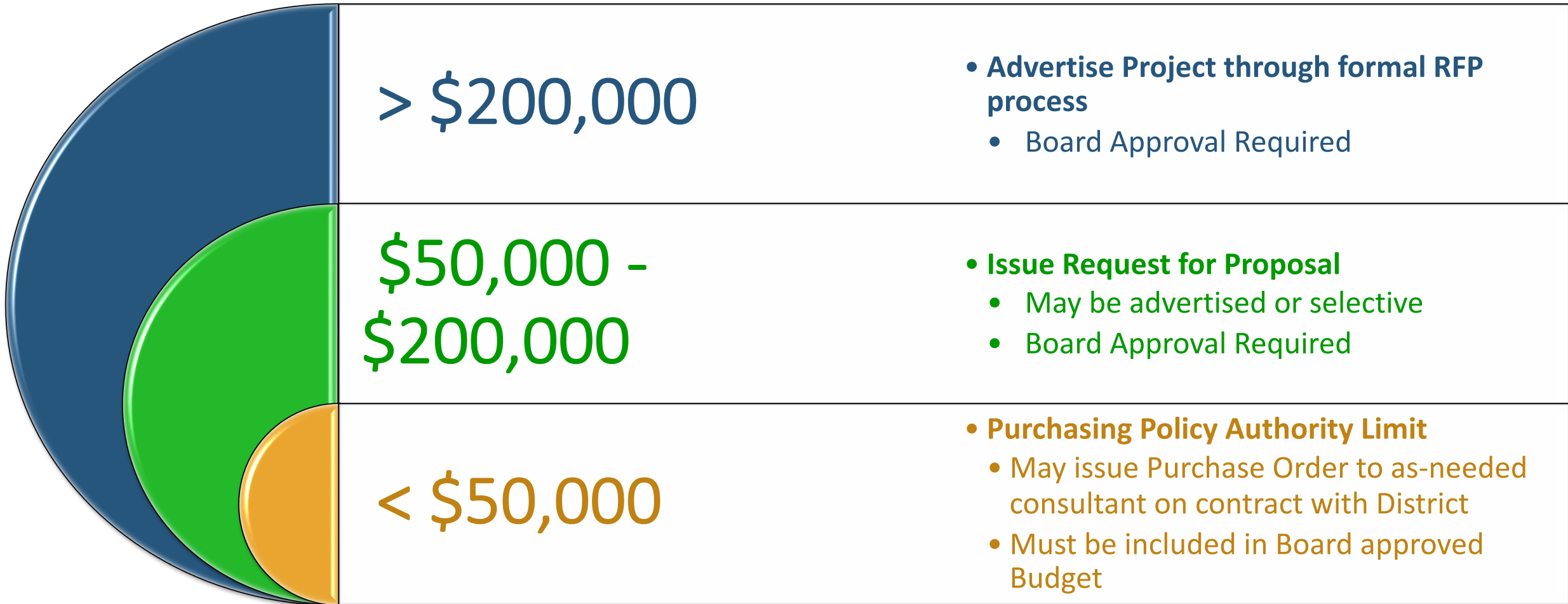
Grossmont Tank Improvements



DOING WORK WITH PADRE DAM



- Design-Bid-Build
- Advertise in the UT
- Additional Information Posted at: www.padredam.org



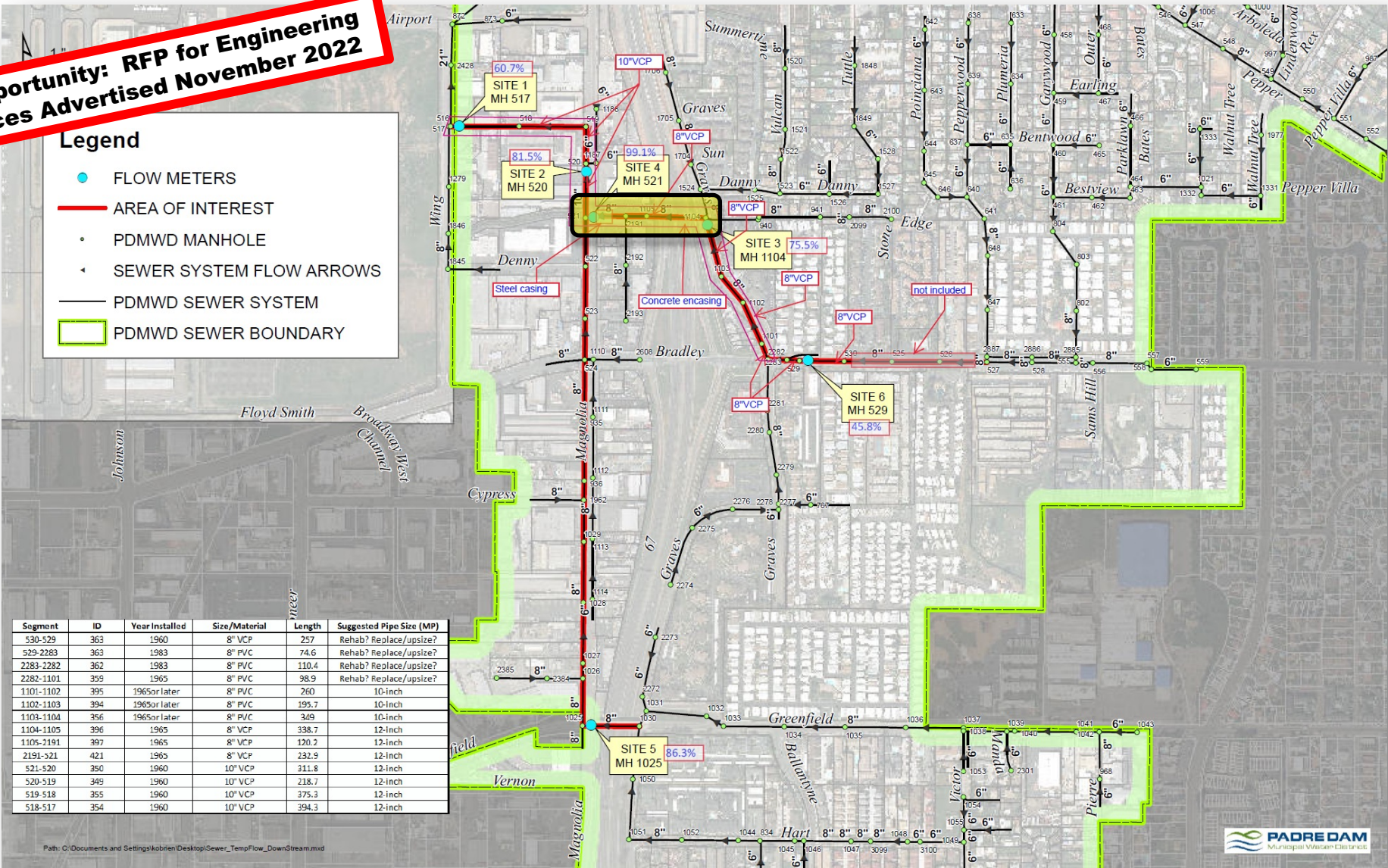
UPCOMING OPPORTUNITIES

Magnolia Avenue & SR-67 Sewer Capacity Improvements

Upcoming Opportunity: RFP for Engineering Design Services Advertised November 2022

Legend

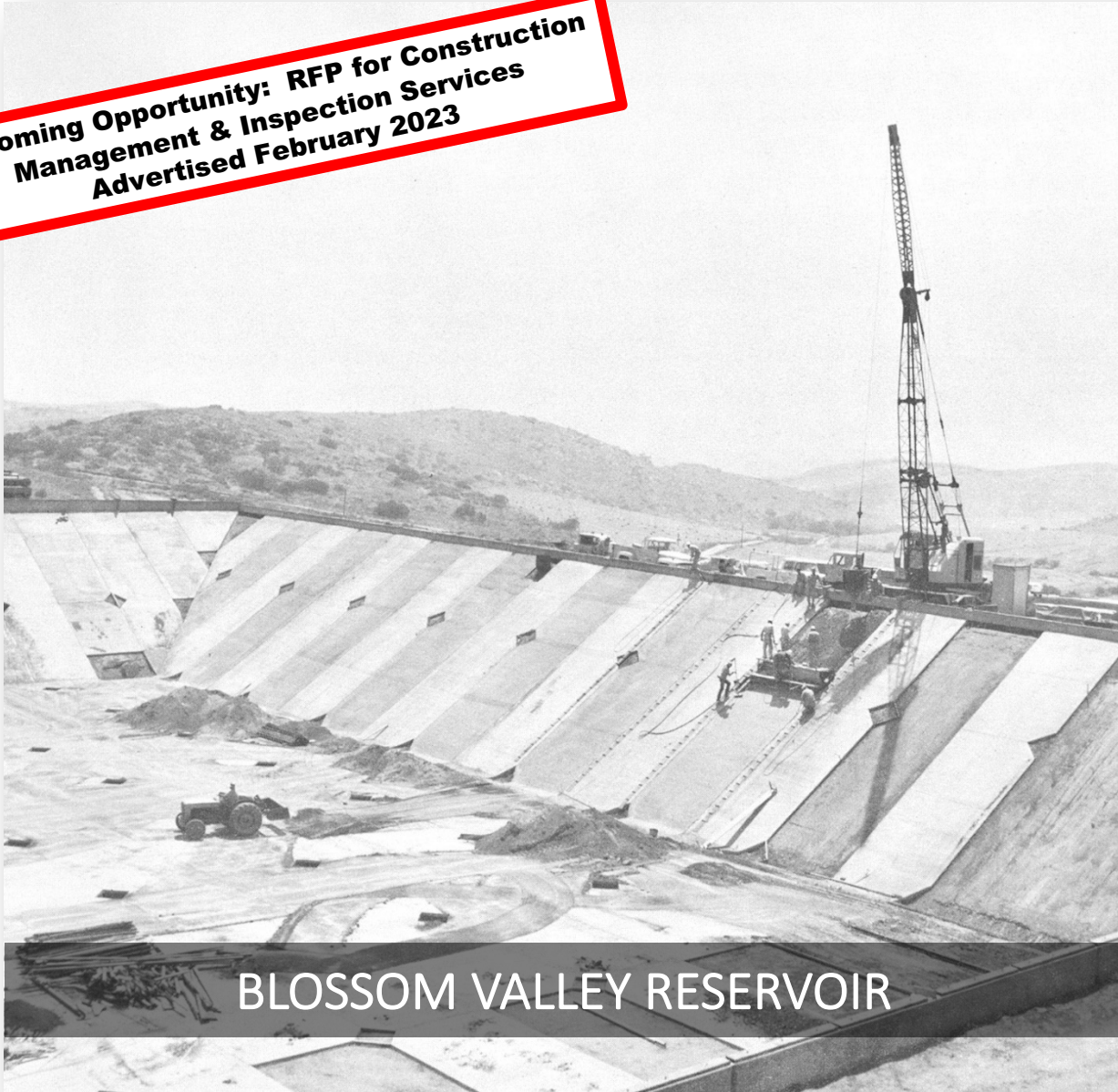
- FLOW METERS
- AREA OF INTEREST
- PDMWD MANHOLE
- ◄ SEWER SYSTEM FLOW ARROWS
- PDMWD SEWER SYSTEM
- PDMWD SEWER BOUNDARY



Sagmont	ID	Year Installed	Size/Material	Length	Suggested Pipe Size (MP)
530-529	363	1960	8" VCP	257	Rehab? Replace/upsized?
529-2283	363	1983	8" PVC	74.6	Rehab? Replace/upsized?
2283-2282	362	1983	8" PVC	110.4	Rehab? Replace/upsized?
2282-1101	359	1965	8" PVC	98.9	Rehab? Replace/upsized?
1101-1102	395	1965 or later	8" PVC	260	10-inch
1102-1103	394	1965 or later	8" PVC	195.7	10-inch
1103-1104	356	1965 or later	8" PVC	349	10-inch
1104-1105	396	1965	8" VCP	338.7	12-inch
1105-2191	397	1965	8" VCP	120.2	12-inch
2191-521	421	1965	8" VCP	232.9	12-inch
521-520	350	1960	10" VCP	311.8	12-inch
520-519	349	1960	10" VCP	218.7	12-inch
519-518	355	1960	10" VCP	375.3	12-inch
518-517	354	1960	10" VCP	394.3	12-inch

Path: C:\Documents and Settings\kobrien\Desktop\Sewer_TempFlow_DownStream.mxd

**Upcoming Opportunity: RFP for Construction
Management & Inspection Services
Advertised February 2023**



BLOSSOM VALLEY RESERVOIR

- Constructed in 1962
- 7.9 MG Capacity
- DSoD Permitted Dam

Contact for more information: mhindle@padre.org



THANK YOU