

LOS ANGELES DISTRICT (SPL)

U.S. ARMY CORPS OF ENGINEERS
915 WILSHIRE BOULEVARD SUITE 1109
LOS ANGELES, CA 90017-3409

FY23-25 DISTRICT PROGRAM OVERVIEW

JUSTIN GAY

Deputy District Engineer

Los Angeles District

U.S Army Corps of Engineers

Los Angeles District

(213) 369-0271

Justin.Gay@usace.army.mil



**US Army Corps
of Engineers**®

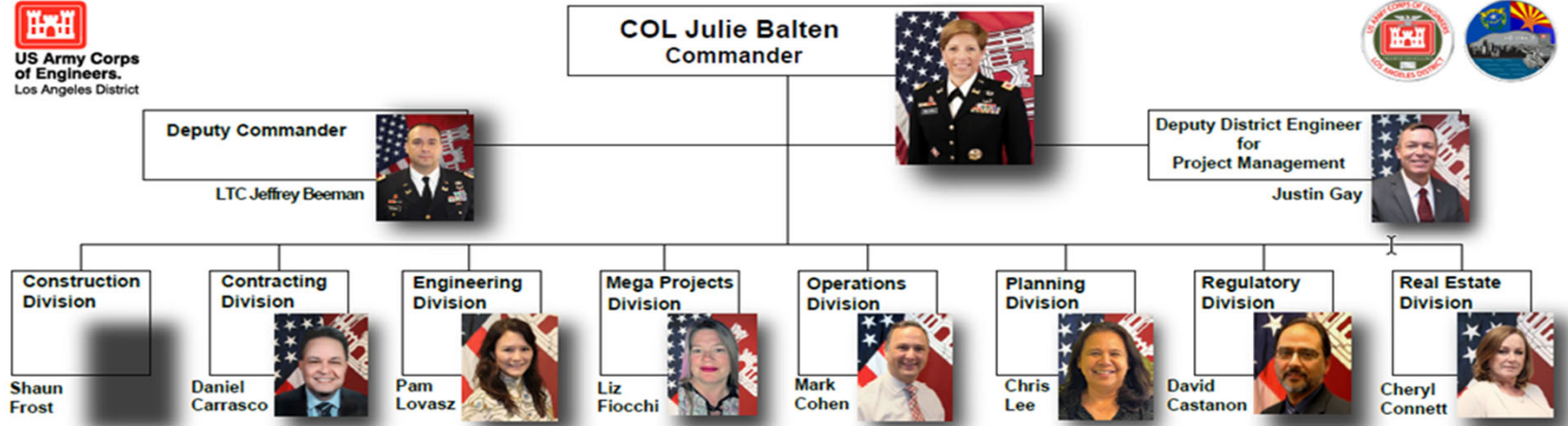


Disclaimer

The views, opinions and findings contained in this report are those of the authors(s) and should not be construed as an official Department of the Army position, policy or decision, unless so designated by other official documentation. For informational purposes only. All information is subject to change without notice.



US Army Corps of Engineers.
Los Angeles District



Support Office and Special Assistants





SOUTH PACIFIC DIVISION



Legend

- District HQ
 - Division HQ
 - Civil Works Boundary
- District Name**
- Albuquerque
 - Los Angeles
 - Sacramento
 - San Francisco

South Pacific Border

Sources:
Imagery Background: ESRI, AeroGlobe, Online BaseMap Source
Copyright © 2015 Esri, DeLorme, NAVTEQ, TomTom
Coordinate System: WGS 1984 Web Mercator
Datum: NAD 1983

0 75 150 300 Miles
1 in = 150 miles

EXECUTIVE OFFICE

SOUTH PACIFIC DIVISION

U.S. ARMY CORPS OF ENGINEERS
LOS ANGELES DISTRICT



LOS ANGELES DISTRICT

226,000 Square Miles
 33 Million People
 8 US Senators
 45 US Representatives
 4 Governors



782 Civilian Employees
 15 DA Interns
 14 Military Employees



Legend

- ★ SPL District/Area Office
- ▲ SPL O&M DAM (17)
- ▲ Flood Control Dams - Section 7 (5)
- ◆ Resident Office (8)
- ◆ Project Office (18)
- ◆ Regulatory Office (4)
- Military Installation

Sources:
 USGS Hydrosheds
<http://hydrosheds.cr.usgs.gov/index.php>
 Coordinate System:
 WGS 1984 Web Mercator Auxiliary Sphere
 Projection: Mercator Auxiliary Sphere
 Map Created by: Deanna Wilson
 August 2016

0 35 70 140 Miles

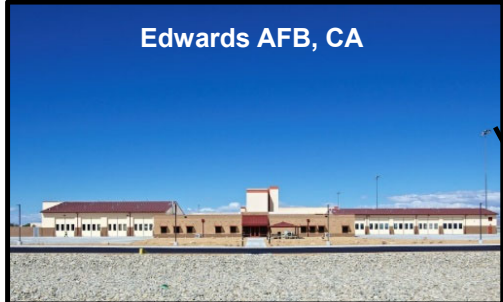
LOCATION MAP

PROJECT, FIELD, & AREA OFFICES WITHIN SPL DISTRICT

U.S. ARMY CORPS OF ENGINEERS
 LOS ANGELES DISTRICT

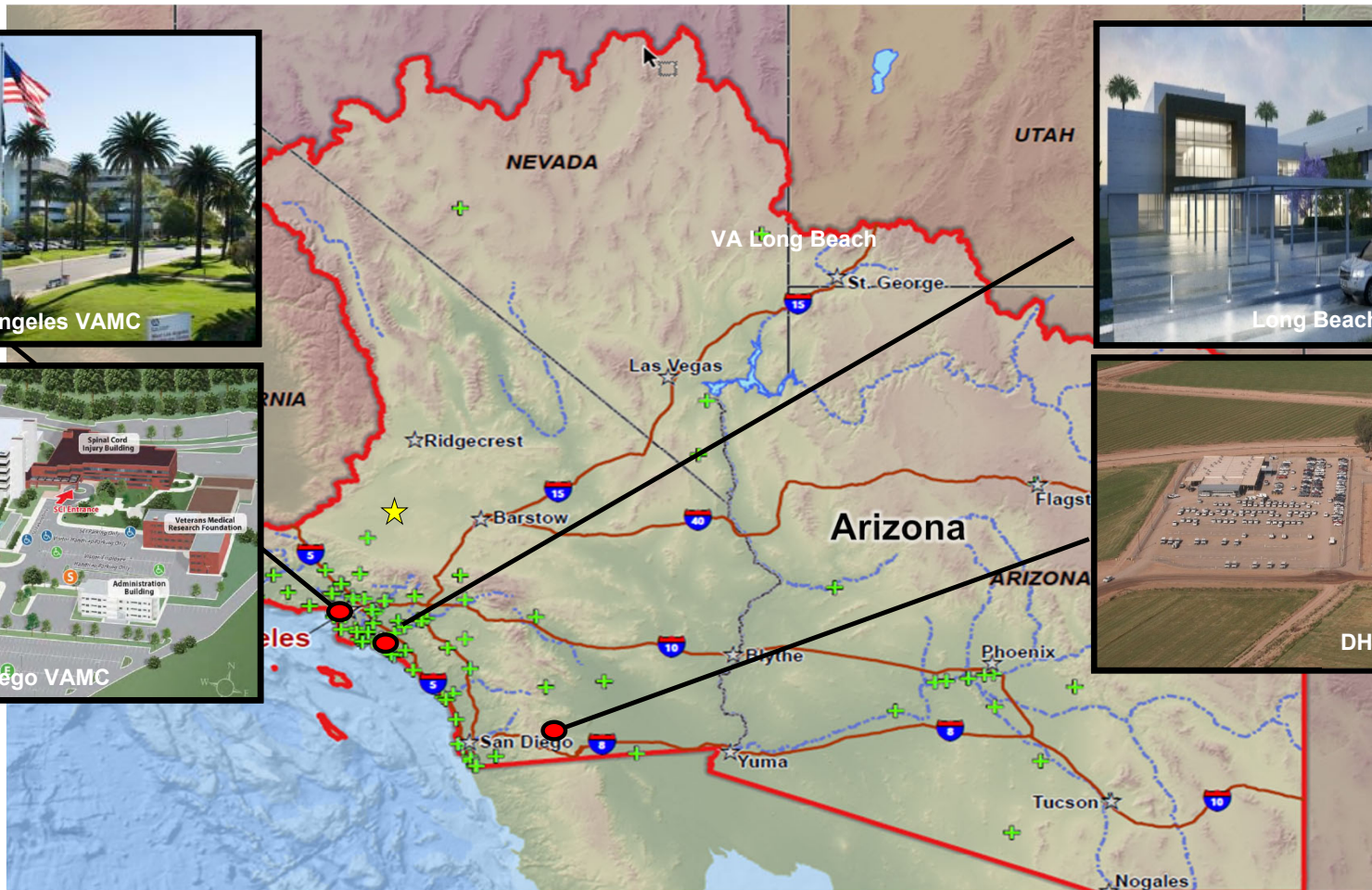


MILITARY PROGRAM



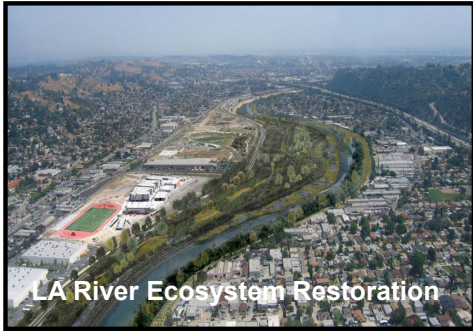


Interagency & International Support Program





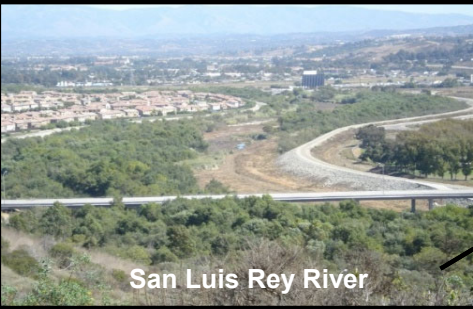
CIVIL WORKS PROGRAM



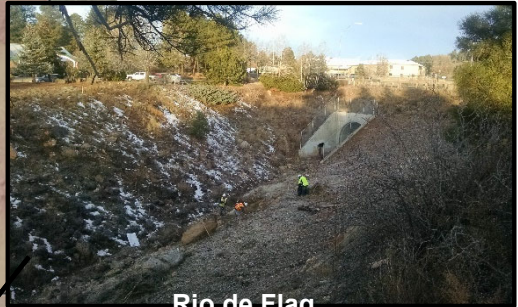
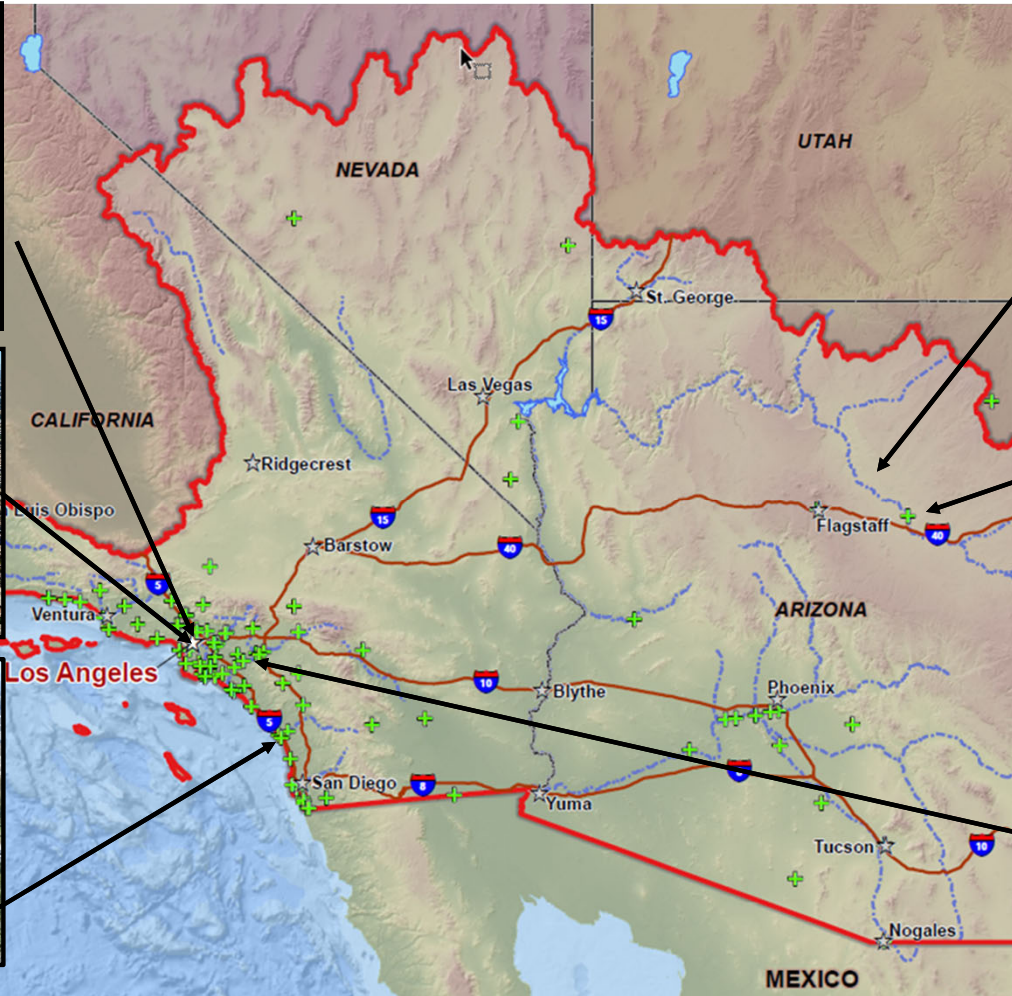
LA River Ecosystem Restoration



Whittier Narrows Dam



San Luis Rey River



Rio de Flag



Little Colorado River, Winslow



Santa Ana River, Reach 9



USACE FY23-24 CONSTRUCTION OPPORTUNITIES



Category and Project Title	Advertise	CEW	Strategy
CONSTRUCTION PROGRAM			
ADAL Egress B995-DB (Luke AFB, AZ)	Q2-FY23	\$1M-\$5M	SBSA
Munitions Igloo West, Edwards AFB, CA-DBB	Q4-FY23	\$5M-\$10M	TBD
F-35A Squad Ops Facility #6-DB (Luke AFB, AZ)	Q2-FY23	\$10M-\$25M	UNR
F-35A ADAL AMU Facility Squadron #6-DB (Luke AFB, AZ)	Q2-FY23	\$25M-\$100M	UNR
Fire Station and Barracks-DBB (Angeles National Forest, CA)	Q2-FY23	\$10M-\$25M	SBSA
Red Rock Fee Station, Fast Pass Lane Renovation (Clark County, NV)	Q2-FY23	\$1M-\$5M	SBSA
DLA_Camp Pendleton-B-2241 Warehouse (Camp Pendleton, CA)	Q2-FY23	\$10M-\$25M	SBSA
Repair-Replace Elevators (VA, Albuquerque, NM)	Q2-FY23	\$5M-\$10M	SBSA
Renovate historic buildings 19, 20, 42 (VA, Prescott, AZ)	Q2-FY23	\$5M-\$10M	SDVOSB
Upgrade Domestic Hot and Cold Water Systems A (VA, San Diego, CA)	Q2-FY23	\$5M-\$10M	SBSA
Replace Prim Substation, Trans & Dual Pri Sel Switches (VA, San Diego, CA)	Q2-FY23	\$5M-\$10M	SBSA
Remodel 2C Inpatient Ward (VA, Phoenix, AZ)	Q2-FY23	\$5M-\$10M	SDVOSB
VA Long Beach Parking Structure (Long Beach, CA)	Q2-FY22	\$10M-\$25M	SBSA
Stabilize Tranquillon Mt Rd Bldg, Vandenberg SFB-DBB	Q2-FY22	\$1M-\$5M	SBSA
Red Rock Fee Station Upgrade (Clark County, NV)	Q2-FY23	\$1M-\$5M	SBSA
GBSD Vehicle Maintenance Facility-DB (Vandenberg SFB, CA)	Q4-FY23	\$25M-\$100M	UNR
Potable Water Well (Davis Monthan AFB, AZ)	Q3-FY23	\$1M-\$5M	SBSA
Entrance and Commercial Vehicle Station (Davis Monthan AFB, AZ)	Q3-FY23	\$10M-\$25M	SBSA
Dietics Kitchen (VA Phoenix, AZ)	Q3-FY23	\$5M-\$10M	SDVOSB
Newport Bay Harbor Dredging	Q3-FY23	\$10M-\$20M	UNR
Standby Power Switchgear Reconfiguration-DB (VA, Long Beach, CA)	Q3-FY23	\$1M-\$5M	SDVOSB
Renovate Medical Support Area (VA, Loma Linda, CA)	Q3-FY23	\$5M-\$10M	SDVOSB
Demo of Mental Health and Community Living Center (Long Beach VA, CA)	Q3-FY23	\$10M-\$25M	TBD
Rio de Flag (Coconino County, AZ)	Q3-FY23	TBD	TBD
Vertical Design Services IDIQ	Q4-FY23	\$100M-\$250M	TBD
A-E Services IDC	Q4-FY23	\$10M-\$25M	TBD
Upgrade Primary 12KV Main Switchgear-DBB (VA, Long Beach, CA)	Q4-FY23	\$10M-\$25M	SBSA
Disaster Resiliency Program, (Creech AFB, NV)	Q4-FY23	\$100M-\$250M+	UNR
LA River Restoration-Reach 1, Phase A (Los Angeles County, CA)	Q4-FY23	\$5M-\$10M	SBSA
GBSD Consolidated Maintenance Facility, Vandenberg SFB-DB	Q2-FY23	\$25M-\$100M	UNR
Retaining Wall on Honda Ridge Rd-Vandenberg SFB, CA-DBB	Q4-FY23	\$1M-\$5M	SBSA
Renovate 2nd Flr Clinics Infusion Center-DBB (Phoenix VA)	Q4-FY23	\$5M-\$10M	SDVOSB
Renovate 2D Inpatient Radiology-DBB (Phoenix VA)	Q4-FY23	\$5M-\$10M	SDVOSB
Parking Structure-DB (Phoenix VA)	Q4-FY23	\$10M-\$25M	TBD
Construct Perimeter Fence and Entrances-DB (Tucson VA)	Q4-FY23	\$10M-\$25M	TBD
Renovate CLC Building 60 (Tucson VA)	Q4-FY23	\$5M-\$10M	SDVOSB
Repair Roofs Bldg: 50, 60, 78 and 90 (Tucson VA)	Q4-FY23	\$1M-\$5M	TBD
Renovate B107 Wings 1B and 2B for Specialty Care (VA Prescott, AZ)	Q4-FY23	\$1M-\$5M	SDVOSB
Replace Patient Care HVAC Systems, B107 2A, 3A and B108 (VA Prescott, AZ)	Q4-FY23	\$1M-\$5M	SDVOSB
Install Patient Lifts (West LA VA)	Q4-FY23	\$5M-\$10M	SDVOSB
Replace 8 Inch Water Lines from B501-B500-DB (West LA VA)	Q4-FY23	\$10M-\$25M	SDVOSB
Partial Seismic Retrofit Demolition and Renovation of Building 8 (Long Beach	Q4-FY23	\$100M-\$250M	TBD

Category and Project Title	Advertise	CEW	Strategy
CONSTRUCTION PROGRAM			
Upgrade Central Chiller Plant and DDC Controls (Long Beach VA)	Q4-FY23	\$5M-\$10M	TBD
B-126-3rd Flr Site Prep, Hemodialysis (Long Beach VA)	Q4-FY23	\$1M-\$5M	SDVOSB
Replace Domestic Water Pump and Generator, Building 125-DB (Loma Linda	Q4-FY23	\$5M-\$10M	SDVOSB
Expand Emergency Power (Phoenix VA)	Q4-FY23	\$5M-\$10M	SDVOSB
PASCUA YAQUI TRIBE: Water Pipeline to Wellness Center-IIJA (Southern AZ)	Q4-FY23	\$1M-\$5M	SDB and/or SBSA
PARKER-BUCKSKIN SANITATION DISTRICT: Injection Wells at WWTP - Aquifer	Q4-FY23	\$1M-\$5M	SDB and/or SBSA
CITY OF TOLLESON: Well Site #1/2/7/8-IIJA (Tolleson, AZ)	Q4-FY23	\$1M-\$5M	SDB and/or SBSA
TOWN OF SUPERIOR: Queen Creek Restoration-IIJA (Superior, AZ)	Q4-FY23	\$1M-\$5M	SDB and/or SBSA
CITY OF FLAGSTAFF: Downtown Flood Lateral Tunnel, WF Killip Elementary			
Regional Flood Detention Basin-IIJA (Flagstaff, AZ)	Q4-FY23	\$1M-\$5M	SDB and/or SBSA
CITY OF BUCKEYE: Wastewater Treatment Plant-IIJA (Buckeye, AZ)	Q4-FY23	\$1M-\$5M	SDB and/or SBSA
PIMA COUNTY REG WATER RECLAMATION DIST: Tres Rios Water Reclamation			
Facility Backup Generator-IIJA (Pima County, AZ)	Q4-FY23	\$1M-\$5M	SDB and/or SBSA
TOWN OF KEARNY: Water Filtration Improvement-IIJA (Kearny, AZ)	Q4-FY23	\$1M-\$5M	SDB and/or SBSA
CAMP VERDE-YAVAPAI-APACHE NATION: Wastewater Treatment Plant-IIJA	Q4-FY23	\$1M-\$5M	SDB and/or SBSA
CITY OF MARICOPA: Aquifer Recharge Facility Project, West Maricopa	Q4-FY23	\$1M-\$5M	SDB and/or SBSA
CITY OF DOUGLAS: Water/ Sewer Infrastructure-IIJA (Douglas, AZ)	Q4-FY23	\$1M-\$5M	SDB and/or SBSA
TOWN OF QUARTZSITE: New Well No. 4 Water System Improvement-IIJA	Q4-FY23	\$1M-\$5M	SDB and/or SBSA
Replace Waste Lines (San Diego, CA BOP)	Q4-FY23	\$1M-\$5M	SBSA
Replace Roof (Honolulu, HI BOP)	Q4-FY23	\$1M-\$5M	SBSA
Upgrade Fire Suppression System (Lompoc, CA BOP)	Q4-FY23	\$1M-\$5M	SBSA
Upgrade Switchgear, Lompoc Prison, CA	Q4-FY23	\$5M-\$10M	SBSA
Upgrade Complex Fire Detection System, Lompoc Prison, CA	Q4-FY23	\$10M-\$25M	SBSA
B-1221 Renovation (March AFB, CA)	Q4-FY23	\$5M-\$10M	SBSA
B-1203 Renovation (March AFB, CA)	Q4-FY23	\$10M-\$25M	SBSA
Main Gate Renovation (March AFB, CA)-	Q4-FY23	\$5M-\$10M	SBSA
Medfly Station (Los Alamitos, CA)	Q1-FY24	\$25M-\$50M	TBD
Aircraft Maintenance Hangar-DBB, Fort Irwin, CA	Q1-FY24	\$5M-\$10M	SBSA
Surfside-Sunset-Newport Beach Project	Q1-FY24	TBD	TBD
Observer Controller Trainer Team Facility, Ft Irwin-DBB	Q1-FY24	\$25M-\$100M	TBD
Military Free Fall Advanced Training Complex-DB, Yuma Proving Ground	Q1-FY24	\$25M-\$100M	TBD
Automation-Aided Instructional Building, Ft. Huachuca-DB	Q1-FY24	\$25M-\$100M	TBD
Dana Point Harbor-Breakwater Repair-IIJA (Orange County, CA)	Q1-FY24	\$5M-\$10M	TBD
Wastewater Collection, Treatment and Abatement of Septic Systems	Q1-FY24	\$5M-\$10M	TBD
Hopi Wastewater Treatment-DBB	Q1-FY24	\$1M-\$5M	SBSA
San Lucy Lagoon Erosion Prot-DBB	Q1-FY24	\$1M-\$5M	SBSA
Sil Nakya Erosion Protection-DBB	Q1-FY24	\$1M-\$5M	SBSA
Child Development Center (CDC), Luke AFB-DBB	Q1-FY24	\$25M-\$100M	TBD



USACE FY23-25 PROGRAM OVERVIEW



GOVERNMENT CONTRACT OPPORTUNITIES

1. Forecast of Contracting Opportunities

Updated Quarterly, posted to SB webpage

2. Upcoming outreach events

Posted to SB webpage, throughout year

3. SAM.gov Advertised Opportunities

Opportunities = **W075 ENDIST LOS ANGELES**
Save Search and hit notify for automatic email notifications

4. SB Points of Contact



Prisco Eric Ravelli
Deputy, Office of SB Programs
Prisco.e.Ravelli@usace.army.mil
213-452-3938

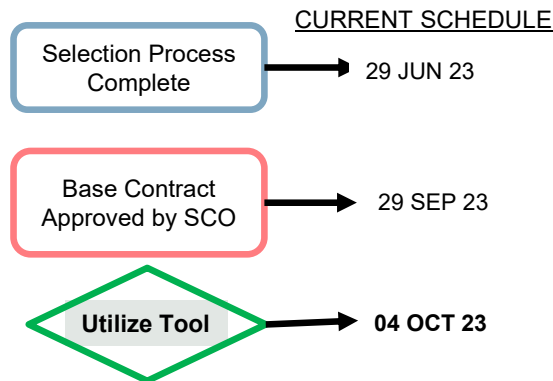
Roger Minami
Procurement Analyst, Office of SB Programs
Kinya.R.Minami@usace.army.mil
213-452-3234

<https://sam.gov/content/help>

USACE Los Angeles District - Current Program Portfolio		\$2.81 Billion to \$4 Billion
MILITARY PROGRAM FY23-24		\$840 M to \$2.10 B
FORMALLY USED DEF SITES (FUDS) PROGRAM		\$52,004,000
IRP AND EQ PROGRAMS		\$8,393,000
International and Interagency Services (IIS)		\$1,034,741,025
Operations		\$139,888,000
NAVIGATIONS		\$54,460,000
CIVIL WORKS		\$623,800,000

SPD Regional Enterprise Tool AE Vertical Design Services MATOC - \$249M

R emf wlyh #Hvdedvk#Uhj lrqd#
Hqwhusulvh#Dftxlvwrq#Wrrd#ru#DH#
Ghvljq#huyLhV
Ydøxh#'#57<P
Shulrg#80|hduEdvh#qr#kswlrqv,
J rdc#Dz dug#DH#Ghvljq#GFv#ru#E#
Vp d#E xvlghvv# #Kquhwulfvng#
srro#





U.S. Army Corps of Engineers Los Angeles District

www.spl.usace.army.mil



COL Julie A. Balten
Commander and District Engineer
(213) 452-3961
Julie.A.Balten@usace.army.mil

Ms. Sally DeSimone, Administrative Assistant
(213) 452-3964
Sally.M.DeSimone@usace.army.mil

Mr. Justin Gay
Deputy District Engineer for Programs
and Project Management
(213) 369-0271
justin.gay@usace.army.mil
Kenneth Reed, Administrative Assistant
(213) 452-3974
Kenneth.Reed@usace.army.mil

Ms. Lisa A. Lugar
Executive Assistant to the Commander
(213) 452-3963
Lisa.A.Lugar@usace.army.mil
Andrew Rios, Administrative Assistant
(213) 452-3965
andrew.a.rios@usace.army.mil



Ms. Jennie Ayala
Outreach Coordinator
213-452-4018
Jennie.Ayala@usace.army.mil

Prisco Eric Ravelli
Deputy, Office of SB Programs
213-452-3938
Prisco.e.Ravelli@usace.army.mil