

Next stop: new rail to southeast LA County.

WEST SANTA ANA BRANCH TRANSIT CORRIDOR



Construction Network
March 14, 2023



Agenda

- Project Overview
- Parallel Workstreams
- Project Timeline
- Upcoming Procurements
- Q & A

January 2022 Metro Board Motion



- Selected Slauson/A Line to Pioneer as the Locally Preferred Alternative (LPA) and focus of Final EIS/EIR
- Approved LA Union Station as the ultimate northern terminus for the Project
- Slauson/A Line Study completion by Winter 2023
 - Assess cost-effective ways to reach LA Union Station

LPA: Slauson/A Line to Pioneer Station

- **14.8 miles**
 - 12.2 mile at-grade
 - 2.6-mile aerial
- **9 WSAB stations**
 - 6 at-grade
 - 3 aerial
- **1 new C Line Station at I-105**
- **5 park & ride facilities**
 - 4 surface lots
 - 1 parking structure
- **River crossings**
 - Los Angeles River
 - Rio Hondo Channel
 - San Gabriel River
- **4 freeway crossings**
 - SR-91, I-605, I-105, I-710
- **LRT Crossings**
 - 15 aerial grade-separations
 - 31 at-grade crossings
- **8.1 miles of freight realignment**
- **MSF facility**



DRAFT – FOR DISCUSSION PURPOSES ONLY – SUBJECT TO CHANGE

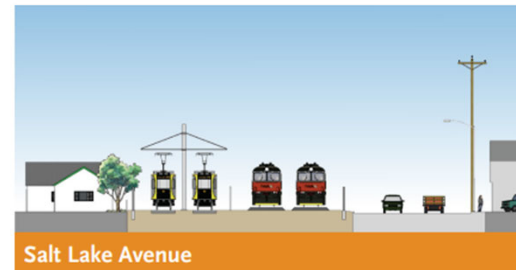
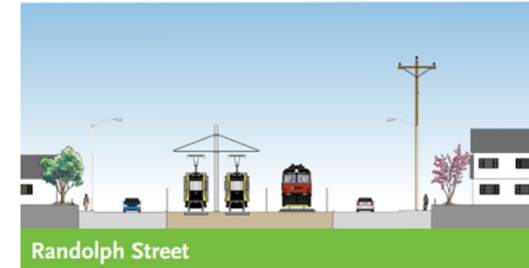
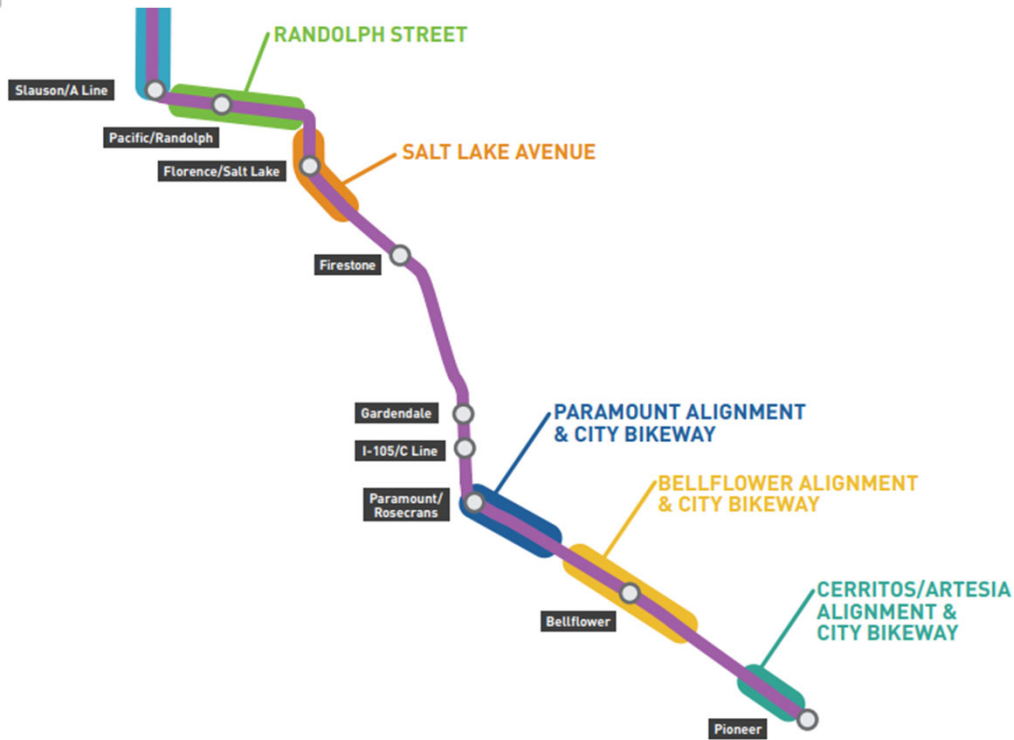


WSAB: Freight Interface

- Wilmington Branch: 1.8 miles (UPRR-owned)
- La Habra Branch: 2.2 miles (UPRR-owned)
- San Pedro Subdivision: 6.1 miles (Ports of LA and Long Beach-owned)



Project Alignment Type: Typical Cross Sections 14.8 mile (Slauson/A Line to Artesia)



LPA Parallel Workstreams

1) Final Environmental Clearance

- Updating 15% Design
- Responding to comments from cities and agencies

2) Early Due Diligence

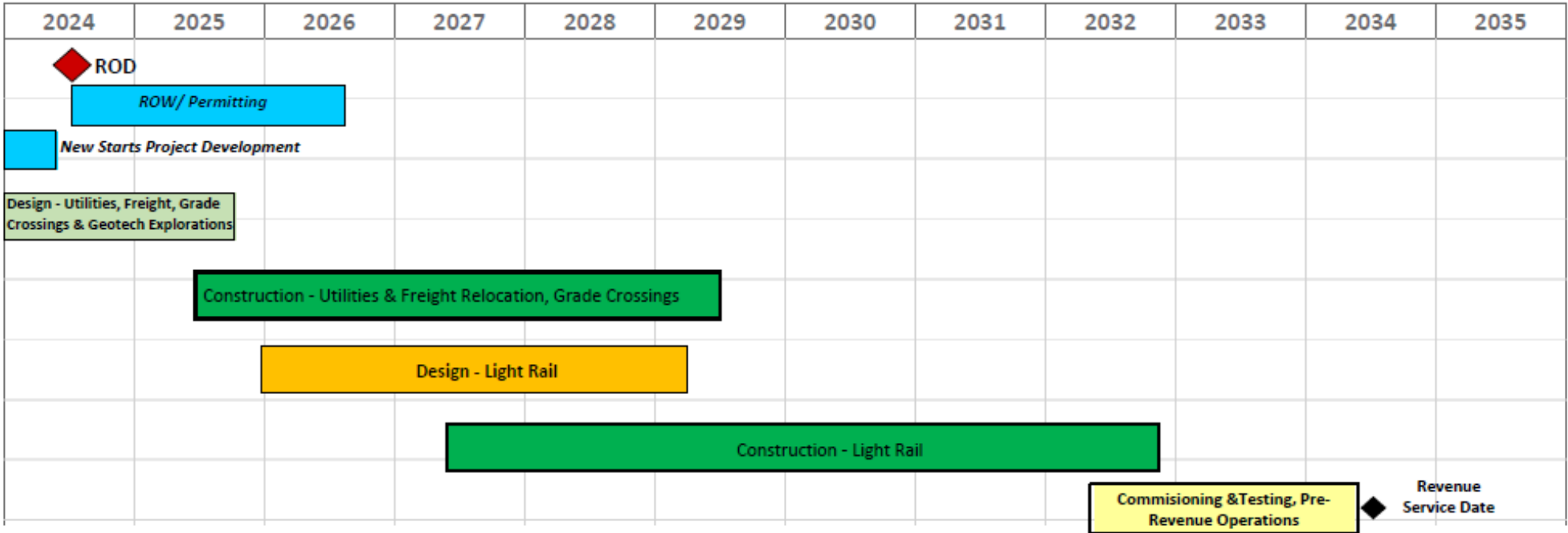
- Third party agreements (9 of 10 cities executed MCA's)
- MOU with UPRR & Ports
- Identify and confirm utility conflicts (*potholing/trenching 50% complete*)
- Confirm soils condition with preliminary Geotech subsurface explorations (*Summer 2023*)
- Freight relocation

3) LRT project delivery evaluation

- Explore different alternative delivery models including DB, PDB, P3, ect?

City
✓ Artesia
✓ Bell
✓ Bellflower
Cerritos
✓ Cudahy
✓ Downey
✓ Huntington Park
✓ Paramount
✓ South Gate
✓ Vernon

Slauson/A Line to Pioneer Station Delivered by 2033/35



Upcoming Procurements

- 1) **Design of high risk items (utility adjustments, freight relocation, grade crossings)**
 - Release April 2023, award Nov/Dec 2023
- 2) **Program Management Construction Management (PMCM)**
 - Release May 2023, award Jan 2024
- 3) **Construction Manager General Contractor (CMGC) for Utility Adjustment**
 - Release Dec 2023, award Dec 2024
- 4) **Construction Manager General Contractor (CMGC) for Freight Relocation**
 - Release Dec 2023, award Dec 2024

Questions?

susiloj@metro.net