

An illustration of a city street scene. In the foreground, a yellow and grey light rail train with the Metro logo is moving from right to left. The street has several cars, including a white SUV, a white sedan, a yellow sedan, and a dark car. Pedestrians are walking on the sidewalk. In the background, there are modern buildings with large windows and palm trees. The sky is blue with some clouds. A yellow banner is at the top left, and a black banner with white text is in the upper middle.

Next stop: light rail for the Valley.

EAST SAN FERNANDO VALLEY LIGHT RAIL TRANSIT



Metro

CONSTRUCTION NETWORK

May 25, 2023

Welcome and Agenda



- ❖ Introductions
- ❖ Project Overview
- ❖ Construction Delivery Methods
- ❖ Opportunities with PDB

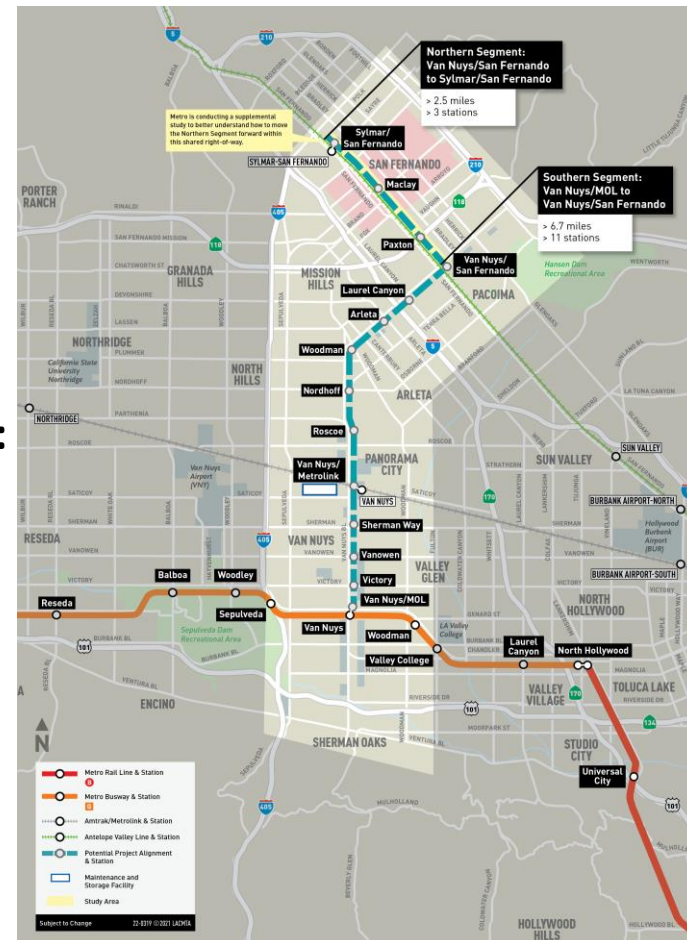


**Concept Image.
Metro standard station**

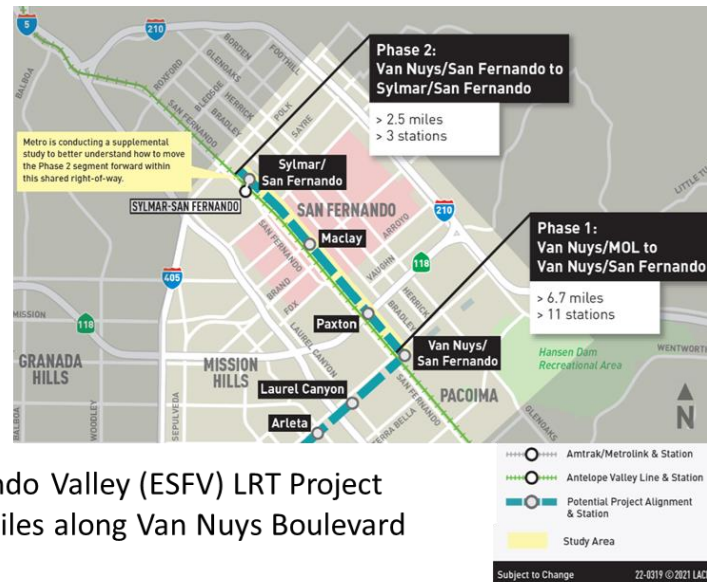
East San Fernando Valley Light Rail Transit Project



- **2020: Metro Board certified Final Environmental Impact Report (EIR)**
- **2021: Metro achieved Record of Decision (ROD) for Final Environmental Impact Study (EIS)**
- **Allowed for the 9.2-mile line to be built in two segments:**
 - Southern: 6.7-mile Light Rail Transit from Van Nuys/Metro G Line to Van Nuys/San Fernando
 - Northern: 2.5-mile from Van Nuys BI/San Fernando Rd to Sylmar/San Fernando Metrolink.



East San Fernando Valley (ESFV) Shared ROW Study



- **December 2020** – The Metro Board certified the East San Fernando Valley (ESFV) LRT Project Final EIS/EIR and approved a Phase 1 project to extend for 6.7 miles along Van Nuys Boulevard between the Metro G Line (Orange) and San Fernando Road.
 - The Board also directed staff to prepare an additional study for a second phase that could include further changes to the northern 2.5-miles segment of the project located within the Antelope Valley Metrolink/UPRR shared ROW.
- The ESFV Shared ROW Study is currently underway and includes grade crossing analysis, conceptual design, and analysis for up to three concepts not studied in the Final EIS/EIR.
- The Study is anticipated to be completed in mid-2024.

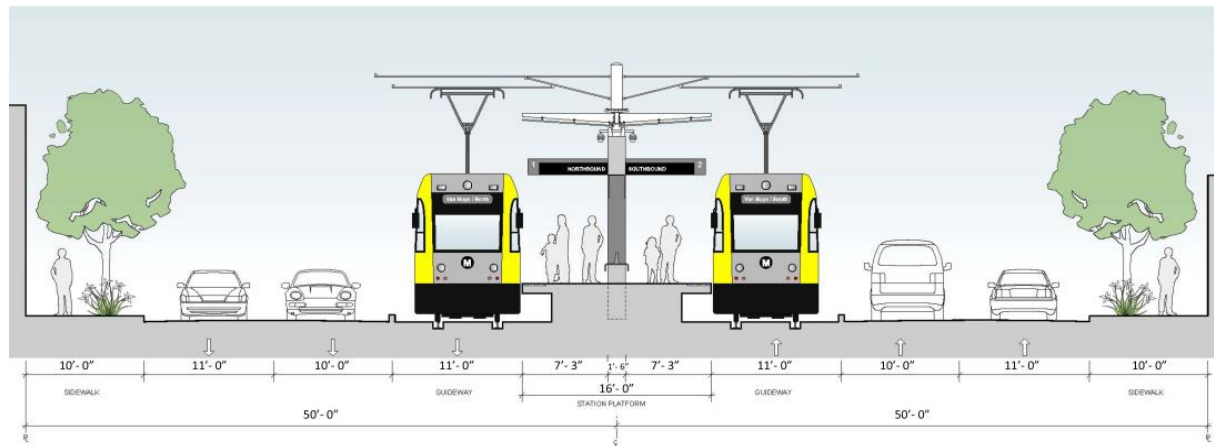
FOR DISCUSSION PURPOSES ONLY – SUBJECT TO CHANGE

East San Fernando Valley Light Rail Transit Project Southern Segment



Southern Segment will include

- 6.7 miles of light rail
- 11 new at-grade transit stations
- 10 Traction Power Substations (TPSS)
- Utility relocations
- Street improvements, including Street trees
- Procurement of 34 LRT vehicles



East San Fernando Valley Light Rail Transit Project Southern Segment



Van Nuys / Metrolink Station Concept

East San Fernando Valley Light Rail Transit Project Southern Segment



Roscoe Station Concept

East San Fernando Valley Light Rail Transit Project Southern Segment



Woodman Station Concept

East San Fernando Valley Light Rail Transit Project Southern Segment



Arleta Station Concept

East San Fernando Valley Light Rail Transit Project Southern Segment



Laurel Canyon Station Concept

East San Fernando Valley Light Rail Transit Project Maintenance and Storage Facility (MSF)



- 21 acres located near Keswick Street
- Accommodates operations and maintenance personnel
- All types of maintenance, including car wash, paint shop, wheel truing, material storage, cleaning platform and main shop



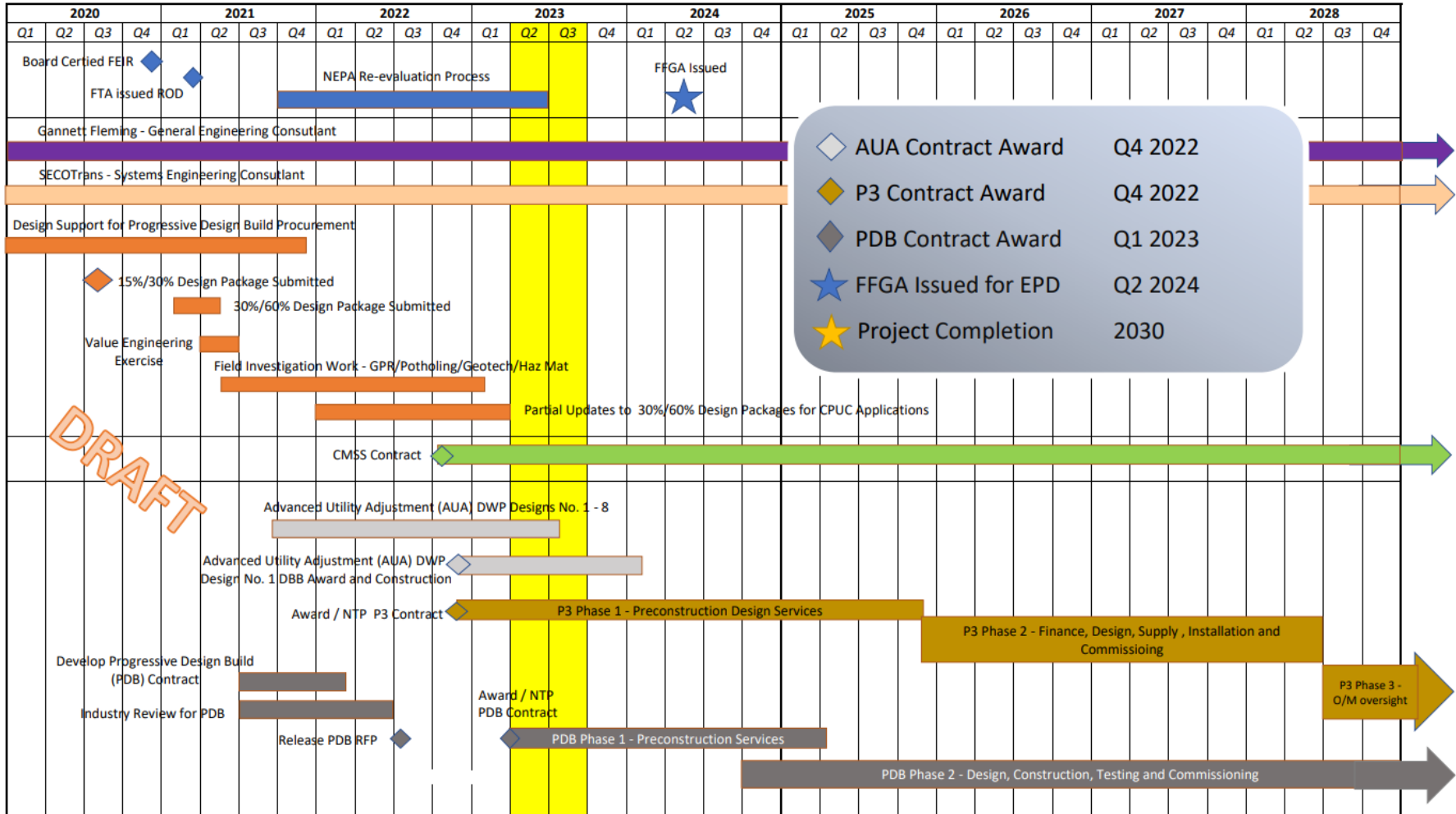
Project Funding



- > Federal Transit Administration
 - Expedited Project Delivery Pilot Program
- > State Grants
 - TCRP, TIRCP, IIP, RIP, and SB1
- > Local Measures
 - Measure R & M
 - Prop A & C



Project Schedule Summary



Note: Current schedule based upon Team's discussions.

Public Outreach



- > Quarterly Construction Update Community Meetings
- > Distribution of bilingual construction notices for the current work activities
 - Door-to-door delivery
 - e-blast sent to stakeholder email lists
 - Posted project website and social media



Community Leadership Council Pilot Business Interruption Fund Business Solution Center

Help small “mom and pop” businesses continue to thrive throughout construction and post construction.



NT Auto
Little Tokyo Area, Regional Connector



Lilia Agadganian D.D.S., Inc.
Purple Line Extension, Section 2

Project Labor Agreement/Construction Careers Policy Goals



- > Metro's Board of Directors approved the PLA/CCP in January 2012; and renewal in January 2017
- > Metro's PLA/CCP Contractor Hiring Goals:
 - 40% Local Targeted Worker
 - 20% Apprentice
 - 10% Disadvantaged Worker
- > Metro and Jobs Coordinator engages workforce partners and community-based organizations in efforts to attain the highest participation of disadvantaged, minority and female workers on projects.
- > Metro PLA/CCP shall be applicable on the following ESFV construction contracts:
 - ESFV Advanced Utility Relocation
 - ESFV Progressive Design Build – Phase 2 (construction phase)
 - ESFV Line MSF & ESS P3 Solar Project – Phase 2 (construction phase)



- > **Advancement of Utility Adjustments (AUA)**
 - December 2022: Notice to Proceed issued to and contractor Groundbreaking event for DWP Design 1

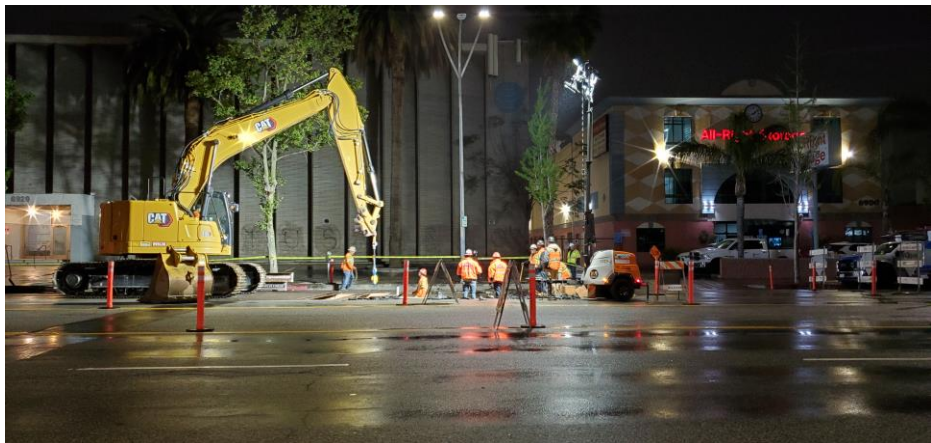
- > **Progressive Design-Build Construction Contract**
 - April 2023: Notice to Proceed with Phase 1 to San Fernando Transit Constructors, a JV of Skanska, Inc and Stacy and Witbeck, Inc.

- > **Public Private Partnership**
 - Dec 2022: Notice to Proceed with Phase 1 to PCS Energy

Early Construction Activities

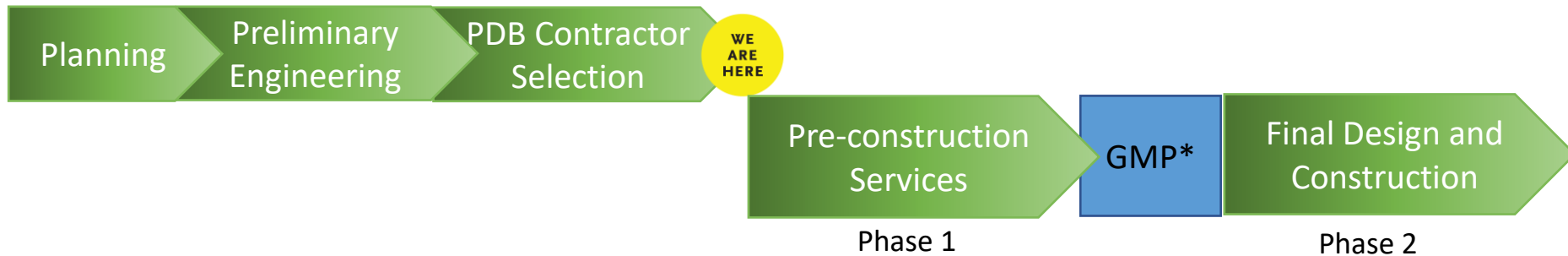


- > AUA DWP Design 1 – construction started in February 2023, anticipate completion by end of 2023
- > AUA Gas Line – construction to start in May 2023, anticipated completion date summer 2023



AUA work activities along Van Nuys Bl between Vanowen St and Vose St

Progressive Design Build (PDB) Delivery Method



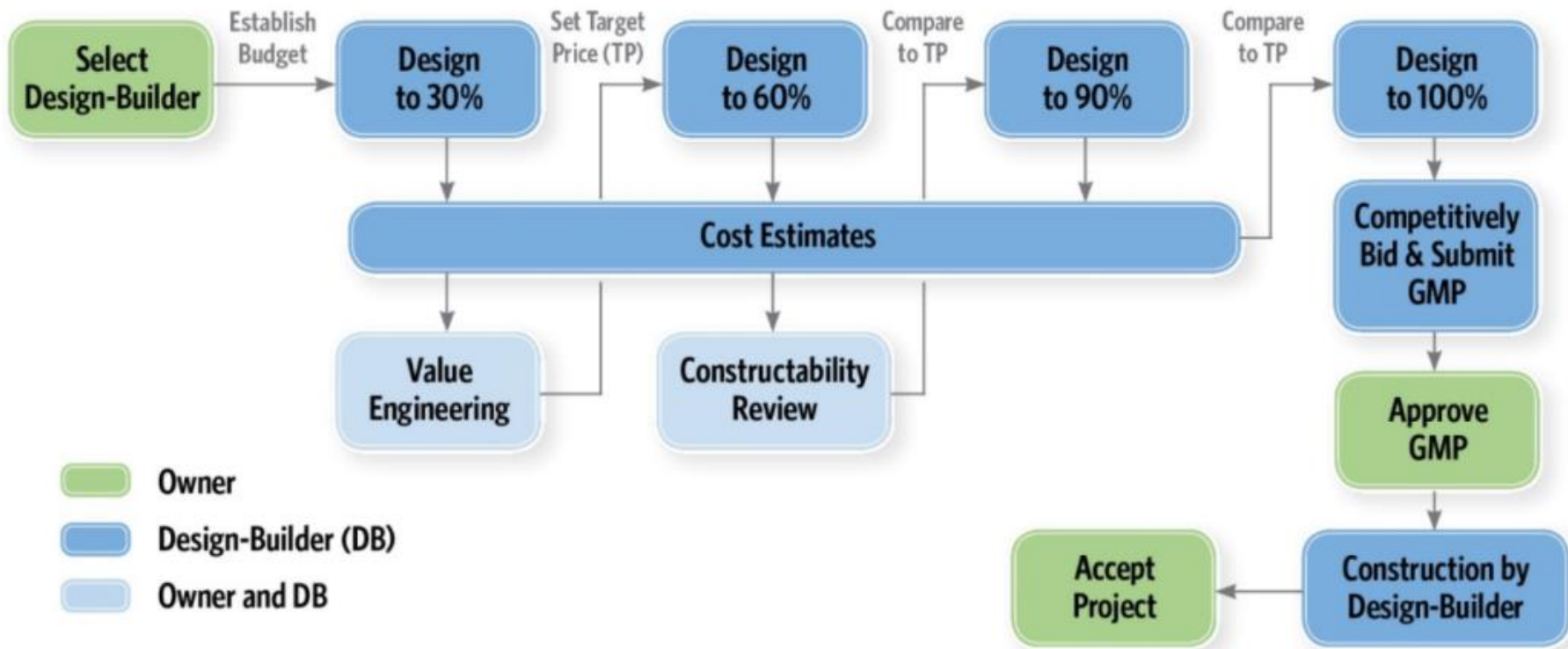
- > October 2021: PDB delivery method was approved by the Metro Board
- > February 2023: Metro Board approval of recommended PDB contractor
- > April 2023: PDB contractor issued Notice to Proceed with Phase 1
 - PDB delivery method is a collaborative process between Metro, third parties and PDB contractor and designer
 - PDB utility relocation work anticipated to begin in late 2023
 - Current design will advance to Final design in early 2024
 - Construction schedules and work will be coordinated

*Guaranteed Maximum Price

Progressive Design-Build



Figure 2-3. Progressive Design-Build

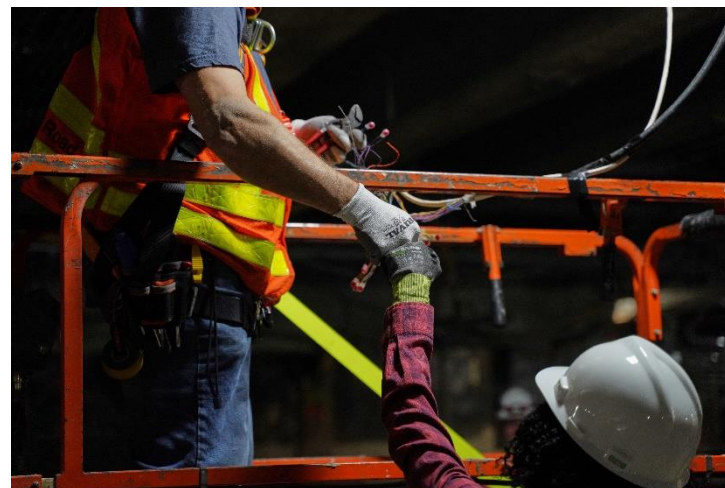


Sources: Johnson (HDR) and Zeltner (HDR) *Alternative Delivery: Progressive Design-Build*

Diverse Business Goals

– DBE Goals:

- Phase 1 Preconstruction: 18%
- Phase 2 Design: 15% to 35%
- Phase 2 Construction: 15% to 30%



– DBE Certification

- To count towards the DBE goal, firm must be in the CUCP at time of bid:
<https://californiaucp.dbesystem.com>
- CUCP Certifying Agencies include LACMTA (Metro), Caltrans, City of LA and more.
- NAICS Code most applicable to the work performed is required on DBE certification to counts towards the project DBE Goal.

Metro Online Application: <https://metro.gob2g.com/>



The screenshot shows the Metro Online Application interface. At the top, there is a dark grey header with the Metro logo on the left, the text "OUR MAIN SITE" in the center, and a "CONTACT SUPPORT" button on the right. Below the header, the main content area features the title "Small Business Certification & Compliance Reporting System" in large, bold, dark blue font. Underneath the title is a "Log In" button with a user icon. The interface is divided into four main sections, each with a dark grey header and a white body:

- Vendor Certification:** "Search and/or join our database of certified vendors" with a button "Apply for / Renew DBE & SBE Certification with Metro".
- About the System:** "Learn more about this system and how it works today" with a button "Read Info for Vendors".
- System Training:** "Learn how to fully utilize our system with a live trainer" with a button "Training and Events".
- Additional Certification Resources:** Two links: "Find a DBE Certified Firm" and "Find a SBE Certified Firm".

DBE Community

Benefits

- Collaborative Approach
- Prime Contractor Outreach for Construction Starts Earlier
- Risk Mitigation During Preconstruction
- Identifying and Breaking Down Large Scopes of Work

Concerns

- Knowing when to bid, and finding the bid opportunities
- Understanding when construction sub work will be awarded
- Metro prequalification
- Many Large Entities – how to find who to contact

Phase 2 Bid Opportunities include, but are not limited to, the following:

- Construction Area Signage
- Traffic Control
- Clear & Grub
- Electrical
- Fencing
- Rebar
- Track
- Glass & Glazing
- Landscaping
- Temporary Sanitation Facilities
- Concrete
- Street Sweeping
- Drug Testing
- Janitorial Service
- Asphalt Paving
- Striping
- Map Cases
- Station Furnishings
- Bike Racks & Lockers
- Trucking
- CIDH – Drilling
- Building Demo
- **More to be identified in phase 1**

SFTC will be utilizing BuildingConnected for this project.

- Registration
- Invitation to Bid
- Access to Metro RFP and Bid Documents
- Future Construction Scope Packages
- Notifications and Correspondence with SFTC Team

Join your Scope package at: bit.ly/Skanskaplanroom

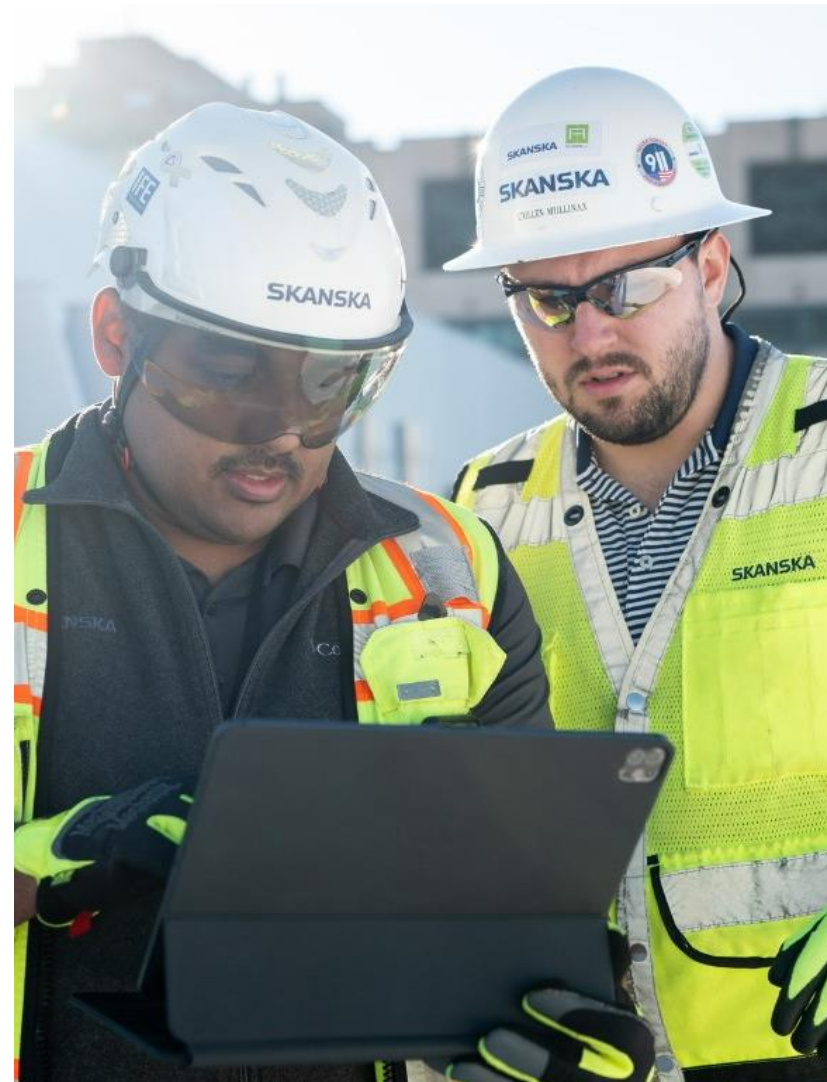
Progressive Design-Build



Stay Connected:

Please register for the Skanska Civil e-newsletter to get information about current and upcoming bid opportunities, industry events and company news.

Sign up for Skanska Civil e-newsletter:
[Bit.ly/interestedbidder](https://bit.ly/interestedbidder)



SFTC Small Business Academy Mentor Protégé Program



Abbigail Brown
(510) 255-1523
abbigail@cpmlogistics.net

Let Abbigail know if you are interested in being contacted for the program.

Progressive Design-Build



Recap of important links:

- JV website: www.sftcjv.com
- Newsletter:
Bit.ly/interestedbidder
- Metro DBE Certification:
<https://metro.gob2g.com/>
- SFTC DBE Coordinator Rebecca:
rebecca@cpmlogistics.net



THANK YOU