



# MENIFEE

## PUBLIC WORKS & ENGINEERING

Presented by Nick Fidler, Public Works Director



**CONSTRUCTION NETWORK**  
Connecting Owners to AEC and CM Industries



# MENIFEE

## CALIFORNIA





# FY 22-23 PROJECT SUMMARY CONT'D

	PROJECT	STATUS	ANTICIPATED COMPLETION		PROJECT	STATUS	ANTICIPATED COMPLETION
PUBLIC FACILITIES	CIP 19-16 Lazy Creek Campus Improvements	Completed	-	PARKS, TRAILS, RECREATION	CIP 16-03 Trail Connectivity Enhancements	Completed	-
	CIP 21-03 Fire Station No. 68 Interior Improvements	Completed			CIP 16-05 AMR Permanent Park Restrooms	Completed	-
	CIP 21-04 New Quail Valley Fire Station No. 5	Construction	FY 23/24		CIP 17-01 Evans Park Design & Construction Phase 1 (Pump Track and Restroom)	Completed	-
	CIP 21-05 New Menifee City Hall	Design	TBD		CIP 19-15 Central Park Amphitheater	Design	FY 23/24
	CIP 22-05 Council Chambers A/V Improvements	Construction	FY 22/23		CIP 21-06 Park Shades	Completed	-
	CIP 22-11 Park & Facility Multi-Use Trailers	Completed	FY 22/23		CIP 22-27 AMR Skate Park Improvements	Design	TBD
	CIP 22-12 Above Ground Fuel Station	Design	TBD		CIP 22-29 Salt Creek Trail Improvements	Design	TBD
	CIP 22-24 Civic Center Parking Lot	Design	TBD		CS004 Sun City Blvd Street Medians	Completed	-
	New Community Center/Rec Center	Design	TBD		CS032 Permanent Park Restrooms	Construction	FY 22/23
	CIP 23-13 Acquisition and Tenant Improvements (Bank of America building)	Design	TBD		Park Improvements Project	Completed	FY 22/23
	CIP 23-14 Enterprise Resource Planning (Project Implementation)	Design	TBD		Sports Court Update	Completed	FY 22/23
IT				IT	CIP 16-06 Park Surveillance/IT Upgrades	Design	TBD

31

CIP Projects  
in Design

13

CIP Projects in  
Construction

19

CIP Projects  
Completed

63

Total Active  
CIP Projects





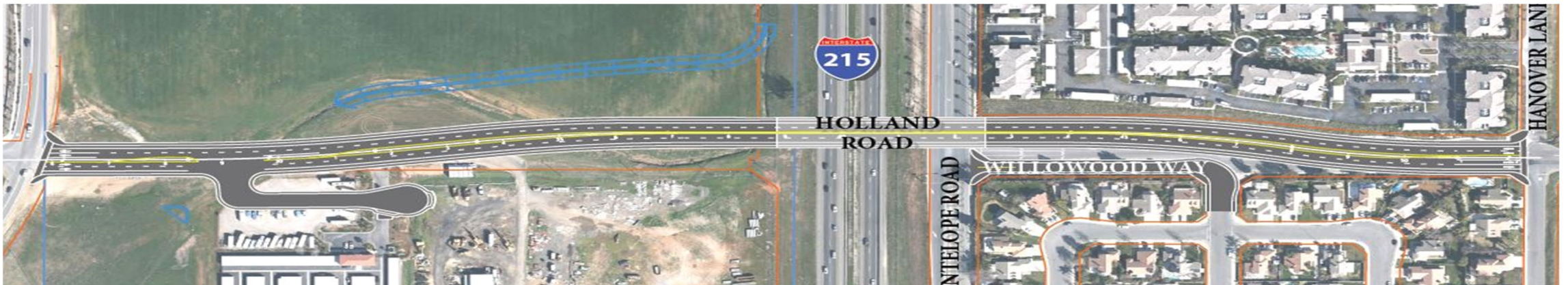
# HOLLAND ROAD OVERPASS



## Project Details:

Construction of a four-lane bridge over the I-215 which will include dedicated bike lanes, sidewalks, traffic signals at Haun Rd. and Hanover Rd., lighting, signing and striping. This Project will:

- Improve mobility & safety for residents and commuters
- Reduce congestion at Newport Rd
- Improve traffic circulation at more than 9 intersections





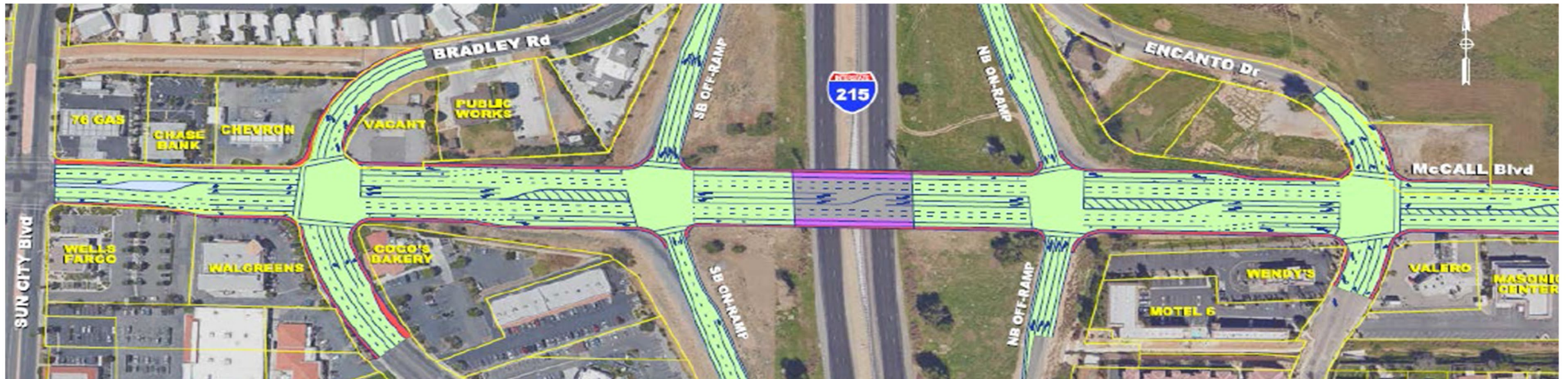


# MCCALL BLVD./I-215 INTERCHANGE



## Project Goals:

- Alleviate traffic congestion on the east side of I-215
- Improve on and off ramps
- Provide increased pedestrian accessibility





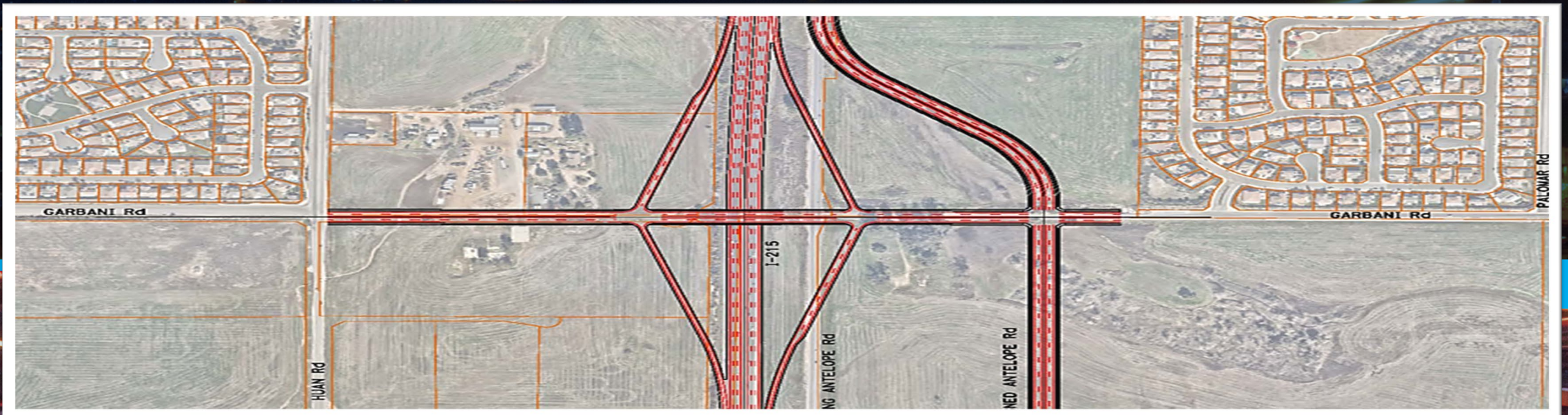


# GARBANI RD / I-215 INTERCHANGE



## Project Details:

This project proposes to construct a new interchange connection at Garbani Road and I-215. The project is needed to mitigate anticipated future traffic impacts from private developments forecasted in the City General Plan. Additionally, the interchange will alleviate traffic congestion on Scott Road and provide an additional east-west connectivity for motorists and pedestrians.







# BRADLEY ROAD BRIDGE OVER SALT CREEK



## Project Details:

Construction of a bridge over the Salt Creek Channel with capacity for four lanes replacing the existing at grade two-lane road. The project will also construct sidewalks, relocate utilities, and improve drainage.

- Improve drainage reducing closures due to flooding after rain events
- Improve mobility to motorists and pedestrians





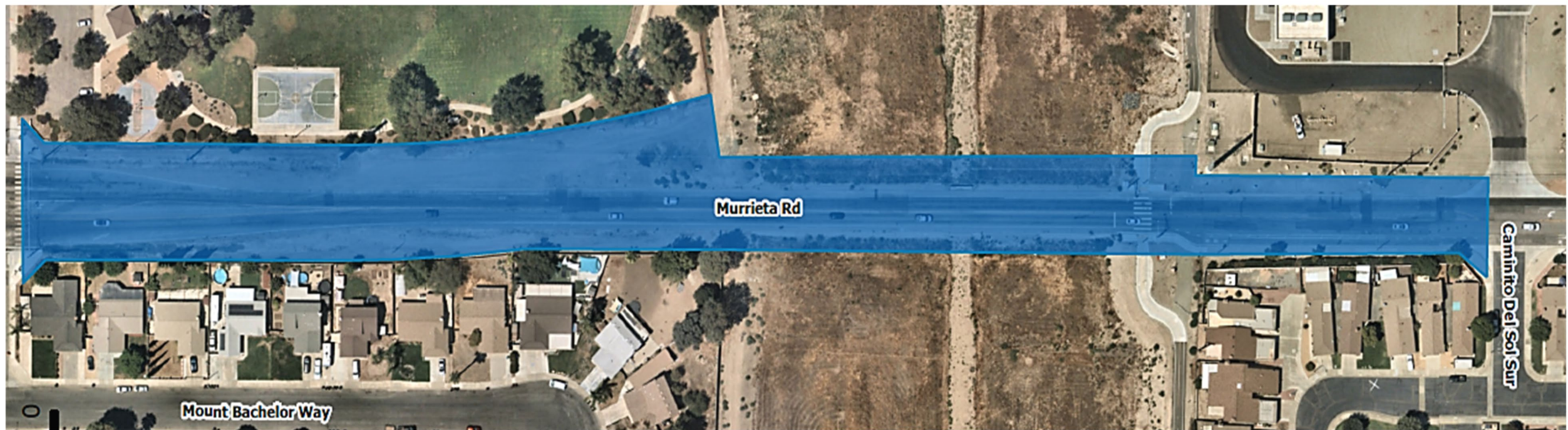


# MURRIETA ROAD BRIDGE OVER SALT CREEK



## Project Goals:

- Improve drainage reducing closures due to flooding after rain events
- Provide better accessibility to pedestrians







# SCOTT RD/BUNDY CANYON RD WIDENING



## Project Goals:

- Alleviate traffic congestion by widening to four-lane roadway
- Promote alternative transportation modes by installing buffered bike lanes
- Increase safety by installing additional traffic signals



Existing



Proposed





# MCCALL BLVD. WIDENING



## Project Details:

The project is located on McCall Boulevard between Oakhurst Avenue (Hospital Entrance) and Menifee Road. The project will widen the existing two-lane road to four lanes including a 12' center median. The project will also relocate utilities, install sidewalks and ADA ramps, and modify two existing traffic signals. The project is needed in order to mitigate increase traffic through the area due to residential and commercial development .





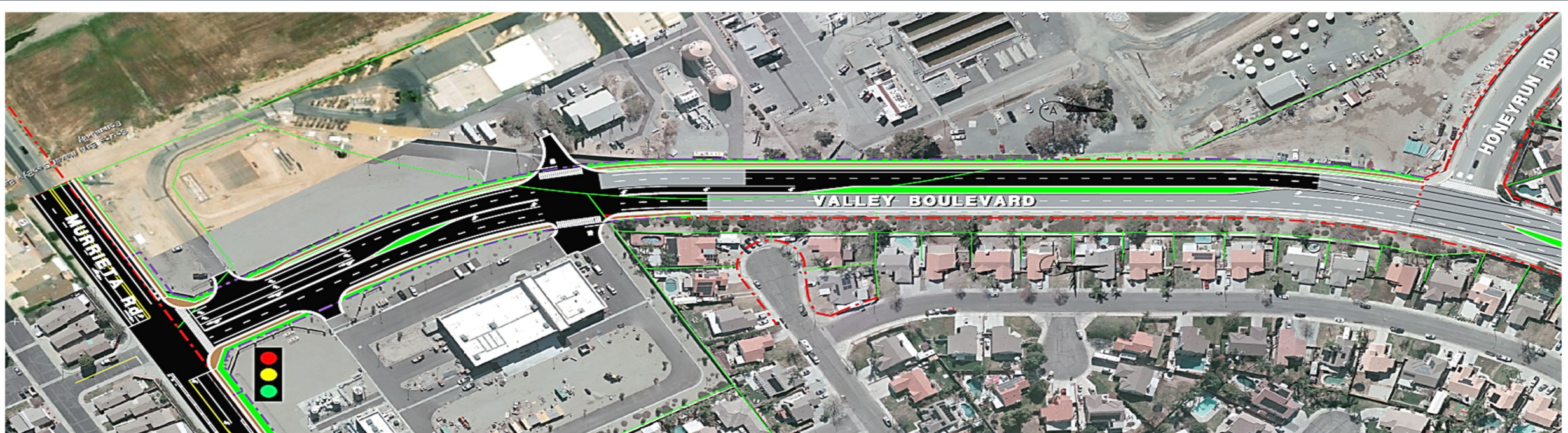


# VALLEY BOULEVARD WIDENING



## Project Details:

- Mitigate traffic congestion from new developments on the north side of the City
- Provide necessary connection to Murrieta Road







# PALOMA WASH PEDESTRIAN BRIDGE



## Project Details:

The project proposes to build a 14-foot pedestrian bridge over the Paloma Wash Channel connecting the City's Central Park to public transportation, shopping and other amenities located along Haun Road.





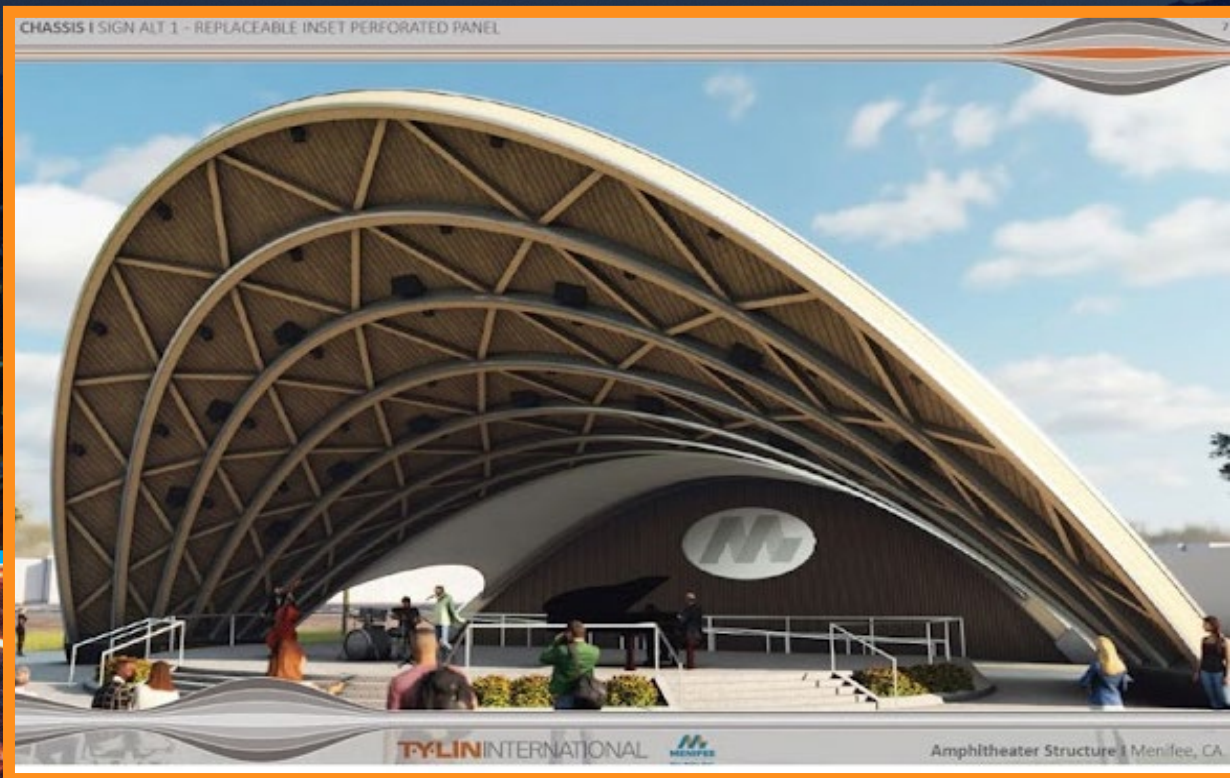


# CENTRAL PARK AMPHITHEATER



## Project Details:

- Facilitate outdoor events, such as the Menifee Music & Arts Festival
- Expand cultural arts programming throughout the City







# UPCOMING CITY FACILITIES



## Project Details:

- Design and Construct new 65,000 GSF City Hall
- Design and Construct new Meniffee Police Department
- Design and Construct new Public Works Maintenance Operations Center



Thank you.

QUESTIONS?



**MENIFEE**  
CALIFORNIA