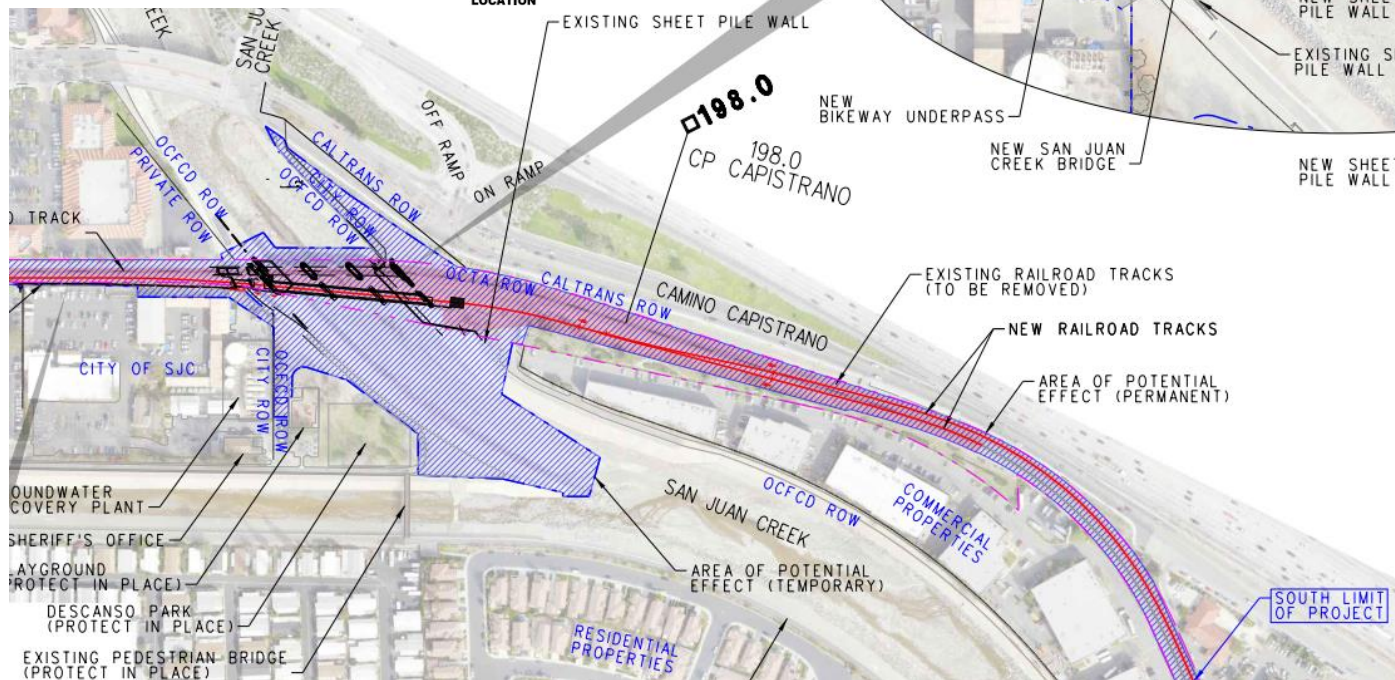
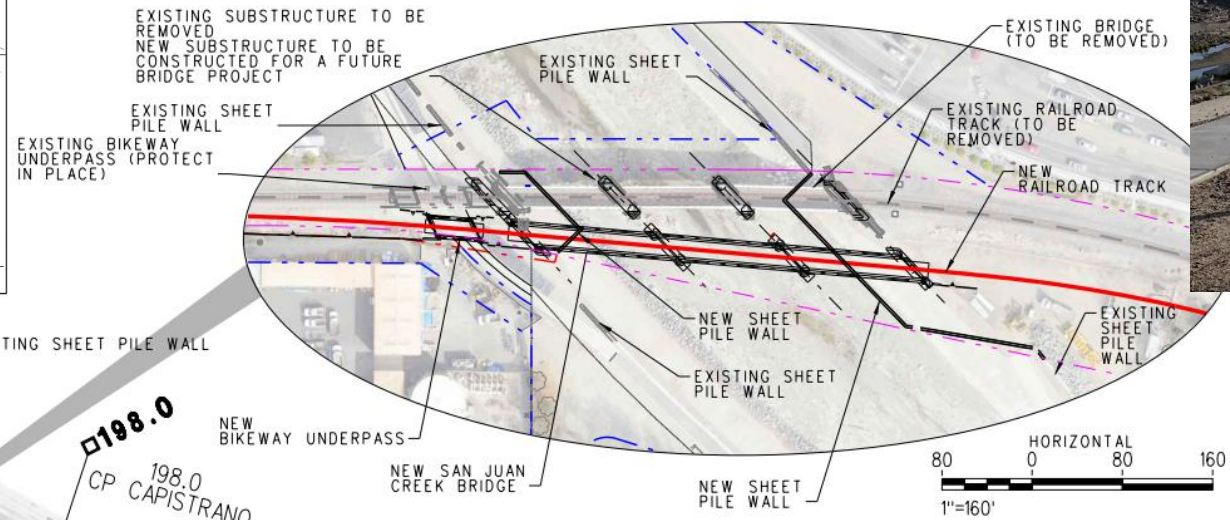
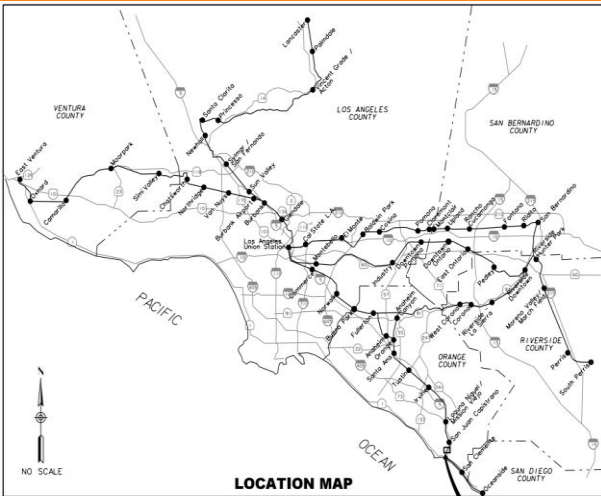


San Juan Creek Bridge Replacement



ABBREVIATIONS:

CP	CONTROL POINT
FWY	FREEWAY
I	INTERSTATE
OCFCD	ORANGE COUNTY FLOOD CONTROL DISTRICT
OCTA	ORANGE COUNTY TRANSPORTATION AUTHORITY
RD	ROAD
ROW	RIGHT-OF-WAY
SJC	SAN JUAN CAPISTRANO
ST	STREET

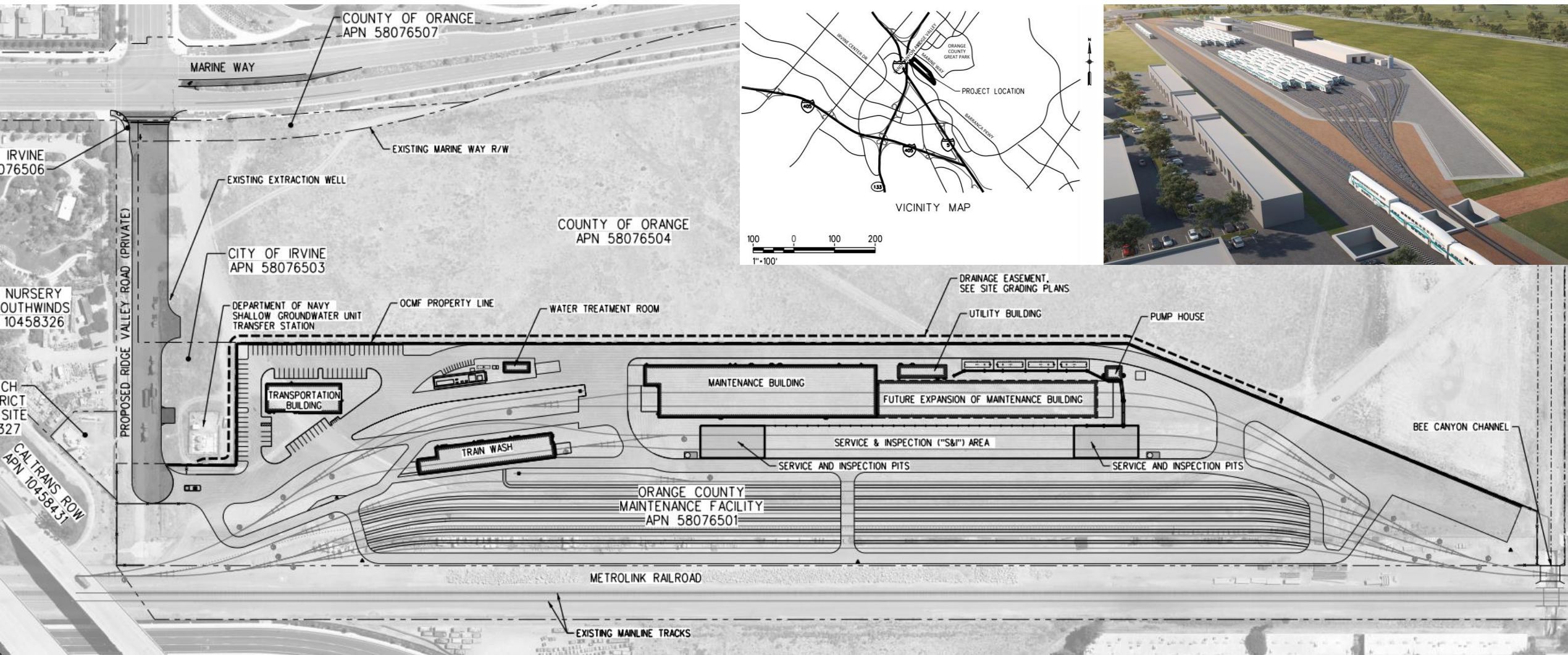
- Replaces 100+ year old bridge
- Construction IFB released in August 2023 by Metrolink

Slope Stabilization Phase II

- Erosion protection grading and shotcrete on slopes in Lake Forest, Mission Viejo, Laguna
- Drainage improvements
- Access Road improvements
- Final design underway



Orange County Maintenance Facility (OCMF)

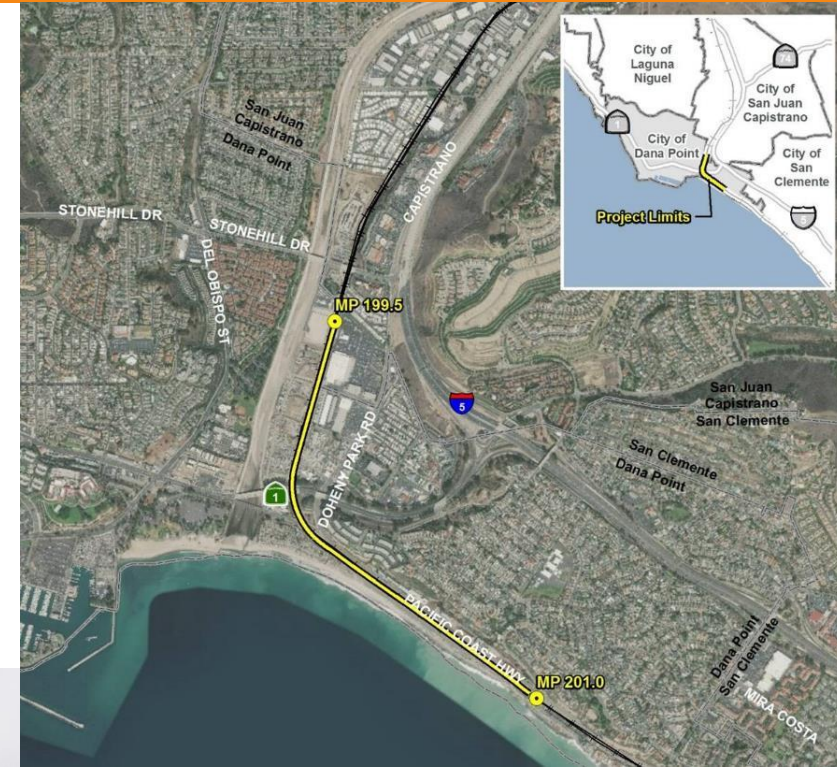


- 21 acres acquired by OCTA
- OCTA environmental lead
- Environmental clearance late 2023

- Metrolink design and construction lead
- SCORE funded

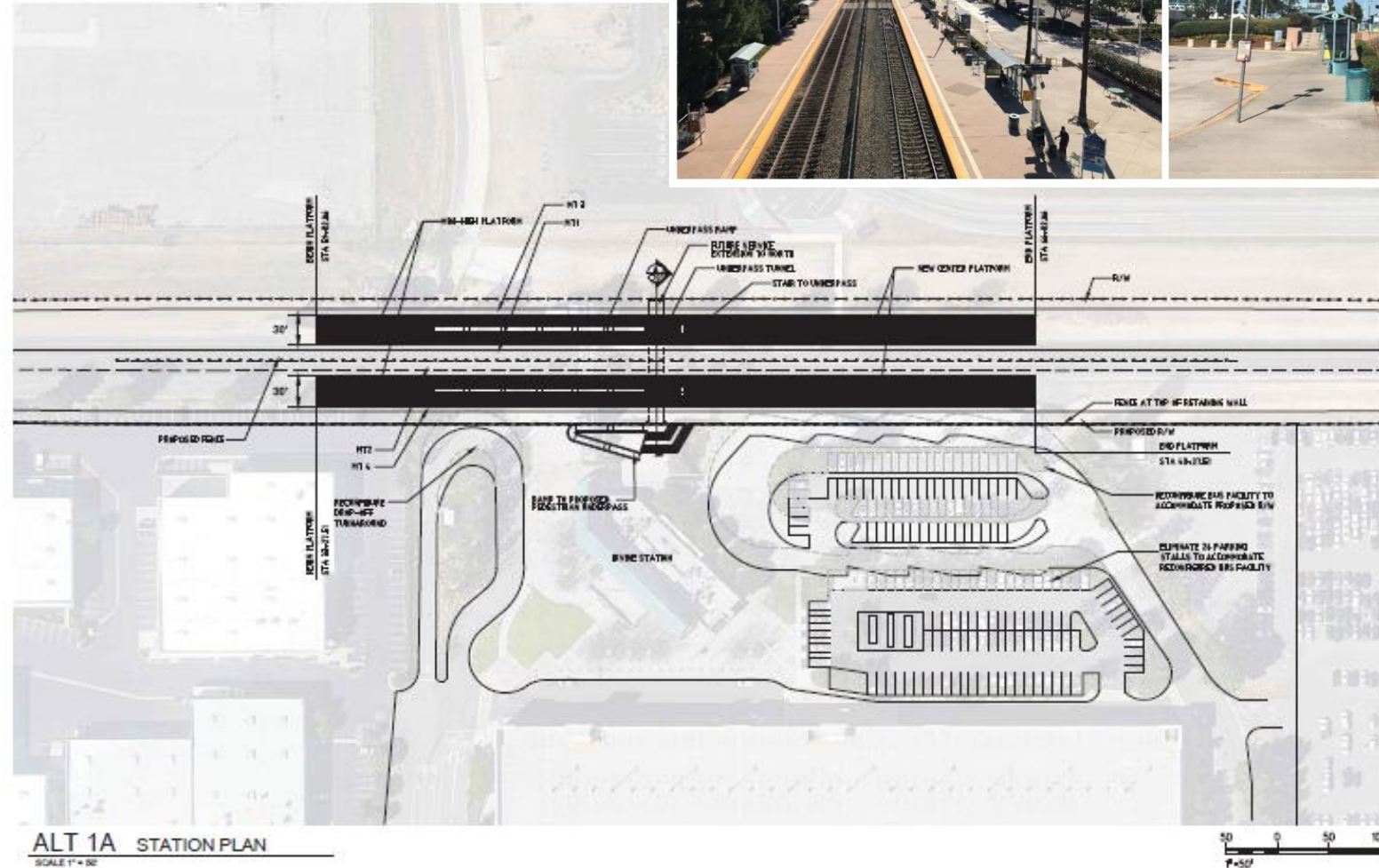
Serra Siding Extension

- Estimated project cost \$50 million
Based on preliminary design
- Extends 1.2 miles of siding track
- Replaces wooden ties with concrete ties
- Replaces ≈100-year-old railroad bridge over Coast Highway with two single-track bridges
- Adds fencing along Coast Highway
- Active transportation access
- Retaining walls/culvert extensions
- **Environmental clearance pending coastal rail and community discussions**



Irvine Station Improvements

- Environmental clearance phase
- Creates second platform, center access (3 or 4 tracks?)
- Pedestrian underpass with platform access
- Adjacent grade separation projects coordination
- **Environmental clearance pending coordination with City.**



Framework for Future Solutions to Coastal Rail

Phase I Study

short- to medium-term solutions

- Develop options to protect coastal rail infrastructure at various sea levels
- Gain an understanding of climate effects on coastal rail infrastructure
- Identify potential solutions for sand replenishment / retention
- Consult and engage key stakeholders / agencies
- Study cost: ~\$2 million
- Probable capital costs: ~\$ millions TBD

Phase II Study

long-term solutions

- Develop options for potential long-term solutions for the coastal section of rail line
- Create an action plan for key elements
- Partner with LOSSAN, state and federal agencies
- Consult and engage key stakeholder / agencies
- Study cost: ~\$5 million*
- Probable capital costs: ~\$ billions TBD

***OCTA thanks the State for its recent \$5 million Transit and Intercity Rail Capital Program award to help develop long-term solutions to keep trains running safely.**