



RIVERSIDE  
COUNTY  
TRANSPORTATION  
COMMISSION

# RIVERSIDE COUNTY TRANSPORTATION COMMISSION (RCTC) PROJECT SUMMARY

## CONSTRUCTION NETWORK

October 10, 2023

*John Tarascio – RCTC Senior Capital Projects Manager*



# Riverside County Transportation Commission (RCTC)

## Who is RCTC?

- RCTC funds and oversees transportation projects, from highway improvements to public transit infrastructure in Riverside County
- RCTC owns and operates the SR 91 and I-15 Tolloed Express Lanes in Riverside County
- RCTC owns and operates 9 Commuter Rail Stations and owns the Perris Valley Line which consist of 26-miles of rail
- RCTC Project Delivery team is separated into two teams
  - Toll Project Delivery – David Thomas
    - ❖ Scope: Planning, Environmental, Design, and Construction of Toll Lanes and related projects in Riverside County
  - Capital Projects Delivery – Erik Galloway
    - ❖ Scope: Planning, Right-of-Way, Environmental, Design, and Construction of Highway, Rail, and Trail projects in Riverside County
    - ❖ RCTC Capital Project Team Consists of 2 Capital Project Managers, 1 Construction Manager, and 1 Facilities Manager along with Bechtel as the Program Management Consultant with a staff of 14
    - ❖ RCTC's Right-of-Way consists of 7 Staff along with a number of consultant support



# UPCOMING PROJECTS

## Projects With CM & Construction Procurements (2024)

	Estimated Construction Cost
Smart Freeway Demonstration Project	\$12M
Santa Ana River Trail 2 - Phase 6	\$27M
Mid-County Parkway Phase 3	\$176M
South Perris Station & Layover Facility	\$25M

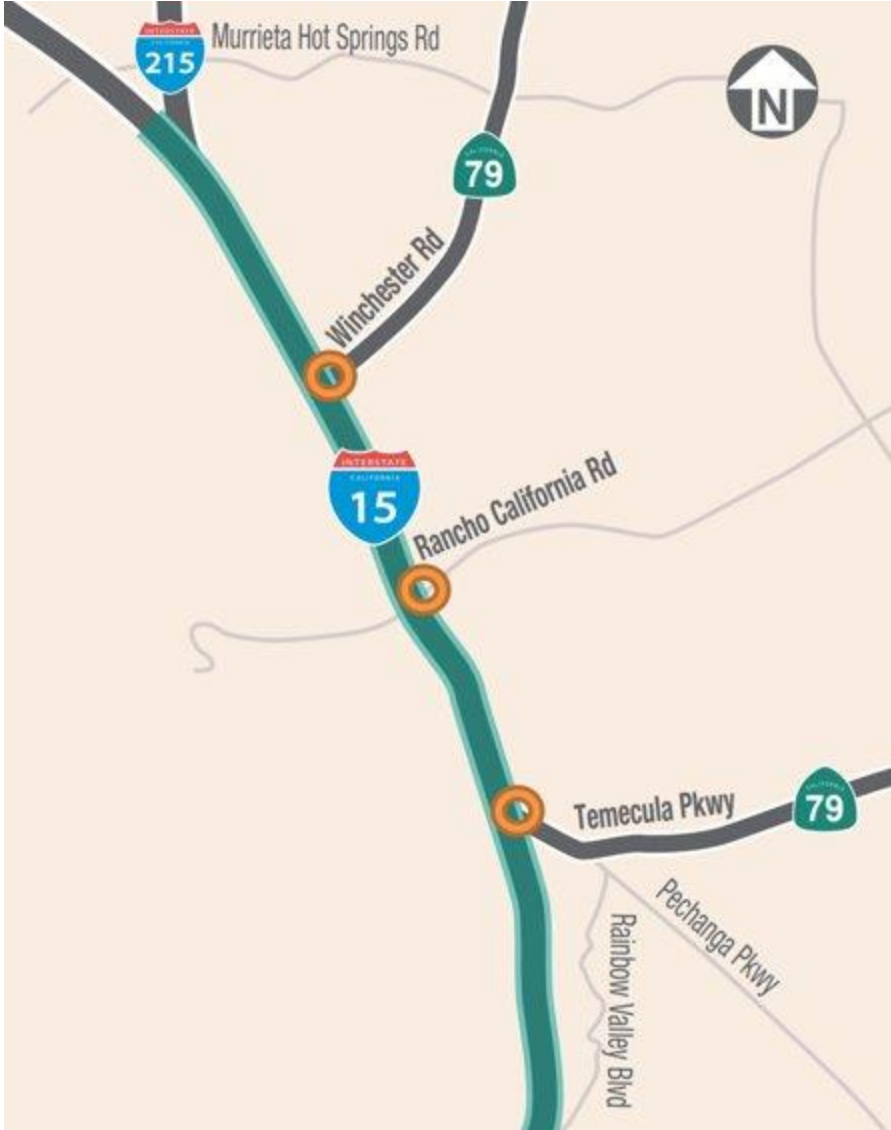
## Projects With CM & Construction Procurements (2025 & Beyond)

Current Project Phase	# of Projects
PA/ED Phase (Rail)	2
PA/ED Phase (Highways & Misc.)	8
PS&E Phase (Rail)	2
PS&E Phase (Highways & Misc.)	5



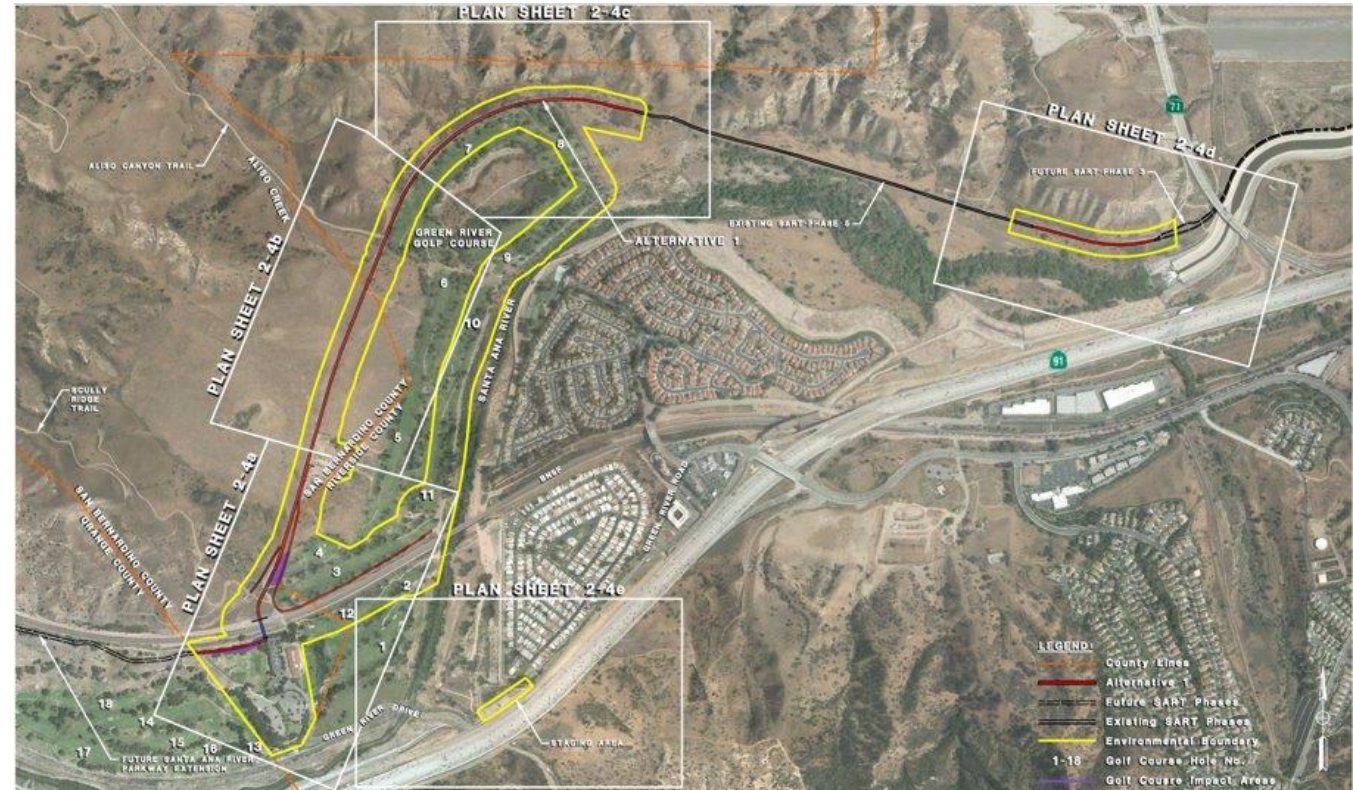
# I-15 SMART FREEWAY

- Project Description:
  - Project Limits: 8-miles of northbound I-15, County Line to 15/215 “Split”
  - Proposed: Installation of Coordinated Adaptive Ramp Metering (CARM) at 3 on-ramps
- Current Phase – Construction Procurement
  - Looking for input from Construction Industry on Scope Packaging
- Project Status
  - Design Status: 100%
  - Estimated Construction Cost: \$12 Million
  - Demonstration Period: 2025 - 2027
  - Upcoming Procurements
    - Construction: 4<sup>th</sup> Quarter 2023



# SANTA ANA RIVER TRAIL 2 – PHASE 6

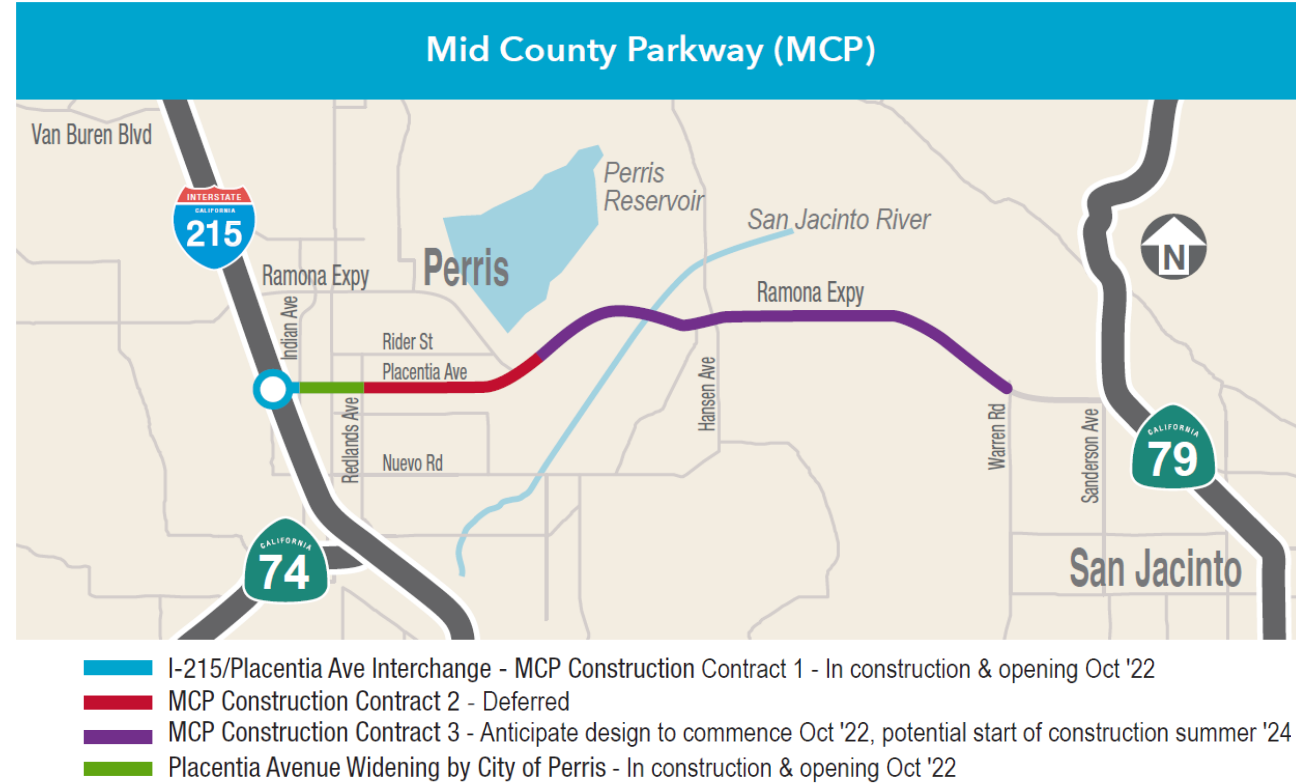
- Project Description:
  - Project Limits: SR-71 to OC County Line
  - Proposed: Approx. 2 miles of hike/bike/equestrian trail and Concrete Vehicle and Pedestrian Bridge over the BNSF tracks
- Current Phase – Design and Right-of-Way
- Project Status
  - Design Status: 65%
  - Estimated Construction Cost: \$27 Million
  - Construction Completion: 2026
  - Upcoming Procurements
    - RFP for CM: 1<sup>st</sup>/2<sup>nd</sup> Quarter 2024
    - Construction: 2<sup>nd</sup>/3<sup>rd</sup> Quarter 2024





# Mid County Parkway Project Construction Package 3 (MCP 3)

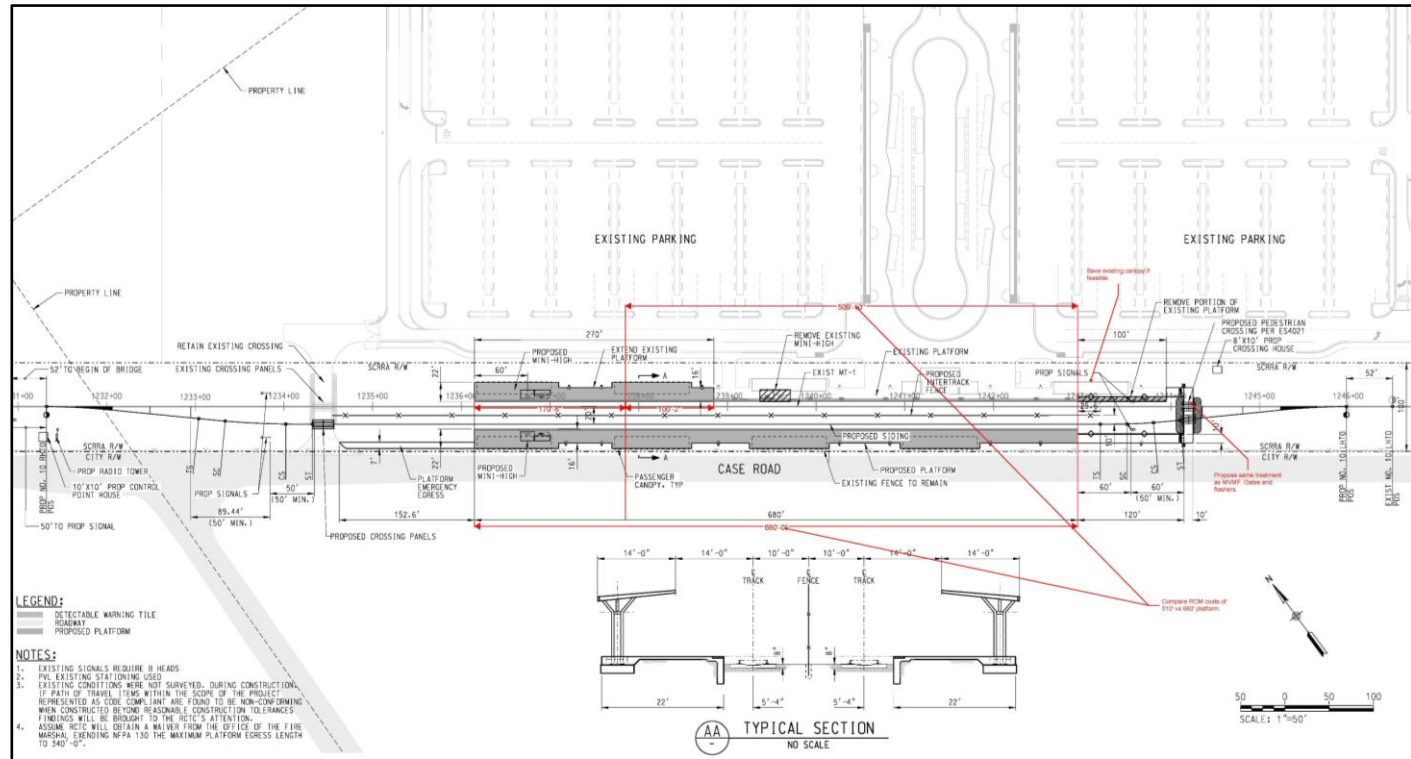
- Project Description:
  - Project Limits: Ramona Expressway (Approx. one mile east of Rider Street to Warren Road)
  - Proposed: Add two new eastbound lanes, restripe existing two lanes to westbound, install raised median with delineators, a new bridge over the San Jacinto River, and traffic signals (8.6 miles)
- Current Phase – Design and Right-of-Way
- Project Status
  - Design Status: 65%
  - Estimated Construction Cost: \$176 Million
  - Construction Completion: 2028
  - Upcoming Procurements
    - RFP for CM: 2<sup>nd</sup>/3<sup>rd</sup> Quarter 2024





# South Perris Station & Layover Facility Expansion

- Project Description:
  - Project Limits: South Perris Metrolink Station
  - Proposed: Add 2<sup>nd</sup> Passenger Loading Platform & Track and 4<sup>th</sup> Layover track including all necessary signals and Platform amenities.
- Current Phase – Design
- Project Status
  - Design Status: 65%
  - Estimated Construction Cost: \$25 Million
  - Construction Completion: 2026
  - Upcoming Procurements
    - RFP for CM: 2<sup>nd</sup>/3<sup>rd</sup> Quarter 2024





# I-15 EXPRESS LANES SOUTH EXTENSION (ELPSE)

- Project Description:
  - Project Limits: I-15 from Cajalco Rd. to SR-74
  - Proposed: Extension of existing I-15 Express Lanes south to SR-74 (14.5 miles)
- Current Phase – Environmental
  - Environmental Phase Status: 70% Complete
  - Industry outreach in 2024 for proposed Progressive Design-Build approach.
- Project Status
  - Estimated Project Cost (Overall): \$650 Million
  - Construction Completion: 2030
  - Upcoming Procurements
    - RFP for PCM: Ongoing
    - RFP for P-DB Contract: Early 2025







RIVERSIDE  
COUNTY  
TRANSPORTATION  
COMMISSION

# QUESTIONS

