

# UC San Diego

**CAPITAL PROGRAM MANAGEMENT**  
**OCTOBER 18, 2023**

# CAPITAL PROGRAM MANAGEMENT - WHO & WHAT...

## Who we are:

Architects, Engineers, Construction Professionals, Inspectors, Accountants and Contract Specialists

- **Main Campus**
- **East Campus** – *Jacobs, Thornton, ACTRI, Moore's Cancer Center, Shiley Eye Institute, etc...*
- **SIO**
- **Hillcrest Medical Center**
- *Other sites where we have purchased the land and occupy the facility*

## WHAT WE BELIEVE

Our aspirations in support of the Chancellor's vision of "Transformation":

*We deliver the physical facilities that support the Vision...*

- Create an internal and external culture that:
  - *Fosters high relationship/high trust teams*
  - *Treat people fairly and respectfully*
  - *Stewardship of Our Resources*
  - *Value and Appreciate People*

*Preferred Delivery Models: iCMGC, Some D/B, Some Pre-Qual Low Bid*

## BY THE NUMBERS

**90+**

NUMBER  
OF STAFF  
IN CPM

**28**

TOTAL NUMBER OF  
LICENSED  
ARCHITECTS AND  
ENGINEERS

**12**

% OF VACANT  
POSITIONS  
WITHIN CPM

**36**

% OF STAFF  
WITH CPM ONE  
YEAR OR LESS

**158**

# OF ACTIVE  
PROJECTS

**\$4.0B**

ACTIVE PROJECTS

**\$8B+**

TOTAL 5 YEAR  
PORTFOLIO

**60 & 46**

OVERALL % OF  
WOMEN & % OF  
WOMEN AT PM – SR  
LEADERSHIP

# THEATER DISTRICT LIVING & LEARNING NEIGHBORHOOD



| Date of Completion | Description   | Facts   |                                       |
|--------------------|---|---|---------------------------------------|
| <b>Fall 2023</b>   | Five buildings providing 2,000 Beds for undergraduates, 1,200 Parking Spaces, enhanced campus entry and transit hub, extension of Ridge Walk with recreation/outdoor spaces located throughout. *LEED Gold. | <u>Square Footage</u><br>823,000 Housing<br>106,000 Academic/Retail<br>519,000 Parking Garage | <u>Project Costs</u><br>\$565,000,000 |

# PEPPER CANYON WEST LIVING & LEARNING NEIGHBORHOOD



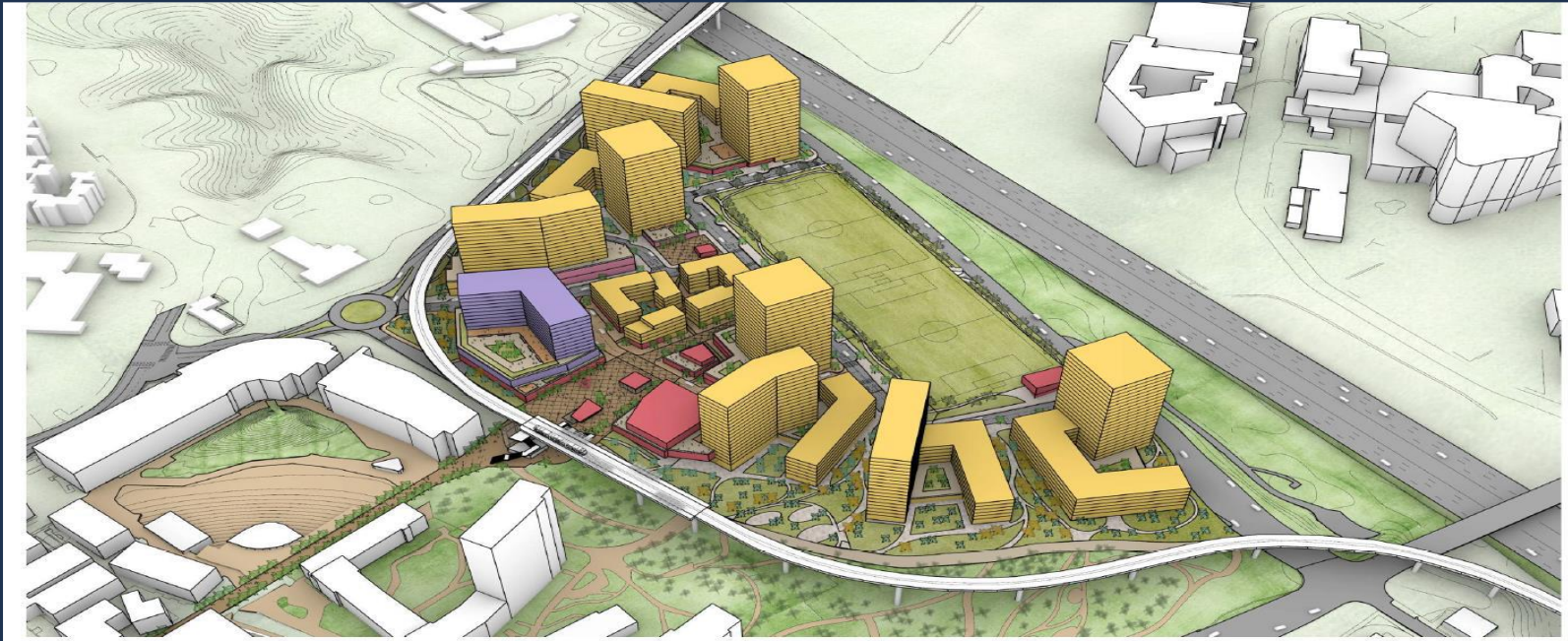
| Date of Completion | Description  | Facts                            |                                       |
|--------------------|--|----------------------------------|---------------------------------------|
| <b>Fall 2024</b>   | Providing approximately 1,300 rooms for transfer and upper-division students in two 22 and 23-story towers with connected 5 story building with outdoor terrace. Also, includes retail and open spaces, and access to canyon trails. Adjacent to the Central Campus trolley station. *LEED Gold. | <u>Square Footage</u><br>580,500 | <u>Project Costs</u><br>\$365,000,000 |

# RIDGE WALK NORTH LIVING & LEARNING NEIGHBORHOOD



| Date of Completion | Description  | Facts                                    |  |
|--------------------|--|--|--|
| Fall/Winter 2025   | <p>RWNLLN will provide approximately 2,400 new student beds on the San Diego campus, as well as academic program, offices, student-centric spaces, public realm improvements, and necessary infrastructure. Co-locating undergraduate housing and support services with academic space, including faculty offices, classrooms, and meeting rooms, will create areas for collaboration, research, and experimentation between students and faculty across various disciplines, blurring disciplinary boundaries, and promoting the mission of Thurgood Marshall College to foster engaged citizens.</p> | <p><u>Square Footage</u><br/>933,535</p> | <p><u>Project Cost</u><br/>\$683,000,000</p> |

# PEPPER CANYON EAST NEIGHBORHOOD



| Date of Completion                          | Description  | Facts                        |                            |
|---|--|------------------------------|----------------------------|
| <b>TBD – Tentative</b><br><b>2029/30/31</b> | The proposed project may consist of as many as 6,000. beds, a Boutique Hotel, Ground Plane Retail, Sports Field(s) and limited Parking | <u>Square Footage</u><br>tbd | <u>Project Cost</u><br>tbd |



# MULTIDISCIPLINARY LIFE SCIENCES BUILDING



| Date of Completion | Description   | Facts                            |                                      |
|--------------------|---|----------------------------------|--------------------------------------|
| <b>Early 2027</b>  | MDLS will support Health Sciences Program, Biology Research and Biology Teaching, Life Sciences and Human Disease Research featuring biological wet labs and animal research spaces. The project includes wet laboratories, Biology teaching labs, collaborative spaces including conference rooms, office space to support research, vivarium, and departments' administrative needs. The project also includes public realm and infrastructure improvements including utilities to serve the project and the re-alignment of the South Parking Structure access road. | <u>Square Footage</u><br>180,000 | <u>Project Cost</u><br>\$309,000,000 |

# TRITON CENTER



| Date of Completion | Description   | Facts                            |                                      |
|--------------------|---|----------------------------------|--------------------------------------|
| <b>Winter 2026</b> | Transforming the campus arrival experience and create a defined entry portal and primary gateway destination at the center of campus. Supports enrollment growth, improved student/alumni/visitor experience, and consolidates complementary programs and services. *LEED Gold. | <u>Square Footage</u><br>419,300 | <u>Project Cost</u><br>\$428,200,000 |

# HILLCREST PHASE 1 – OSHPD 3 OUTPATIENT PAVILION



| Date of Completion | Description   | Facts   |                                      |
|--------------------|---|---|--------------------------------------|
| July 2025          | 256,000gsf OSHPD 3 Outpatient Pavilion, 1,850 Car 10 level Parking Garage, and non-OSHPD Central Plant. | <u>Square Footage</u><br>256,000gsf, 1,850 Car Parking Garage, Central Plant and Roadway Work | <u>Project Cost</u><br>\$552,000,000 |

# SHILEY EYE INSTITUTE RENOVATION



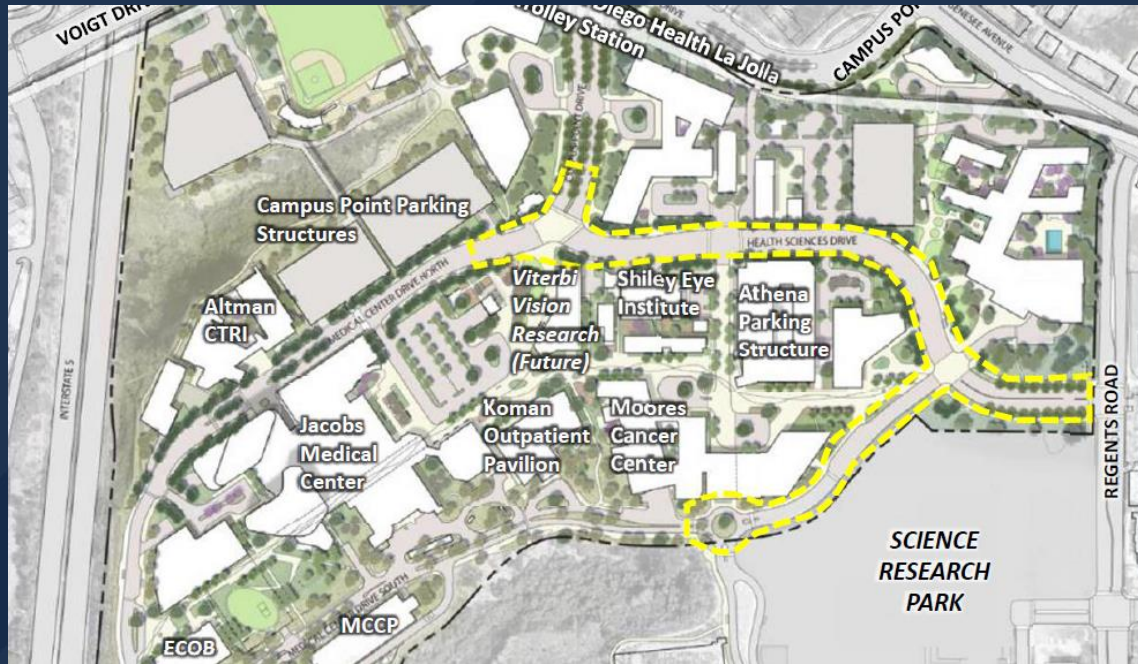
| Date of Completion | Description   | Facts                           |                                     |
|--------------------|---|---------------------------------|-------------------------------------|
| <b>Winter 2024</b> | The Shiley Eye Institute serves more than 100,000 patients each year necessitating upgrades to building infrastructure and modifications to improve accessibility and path of travel. | <u>Square Footage</u><br>35,673 | <u>Project Cost</u><br>\$30,900,000 |

# VITERBI FAMILY VISION RESEARCH PARK



| Date of Completion | Description  | Facts                            |                                      |
|--------------------|--|----------------------------------|--------------------------------------|
| <b>Summer 2024</b> | Research space and interdisciplinary collaboration spaces, as well as computational and clinic research spaces and laboratories, meeting and support spaces, as well as retail space. *LEED Gold | <u>Square Footage</u><br>100,000 | <u>Project Cost</u><br>\$160,000,000 |

# EAST CAMPUS LOOP ROAD



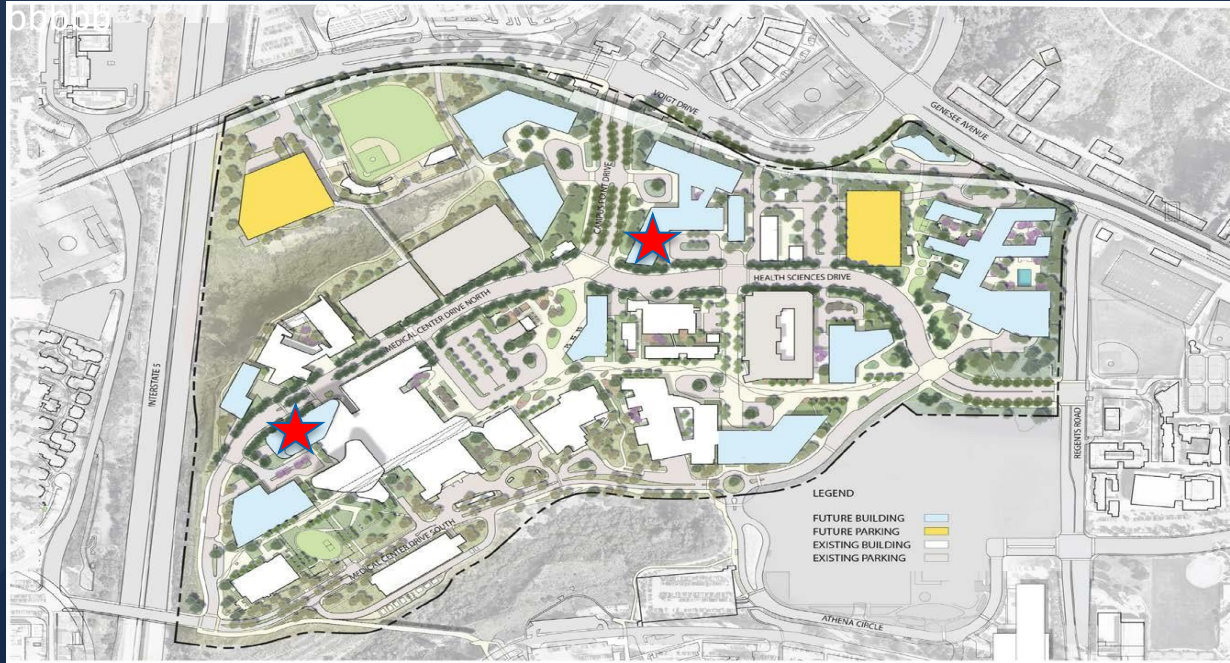
| Date of Completion       | Description   | Facts                                |   |
|--------------------------|---|--------------------------------------|---|
| <p><b>Early 2025</b></p> | <p>Realignment and widening of Health Sciences Drive, Medical Center Drive, and surrounding areas in order to improve access, safety and wayfinding on the East Campus.</p> | <p><u>Square Footage</u><br/>n/a</p> | <p><u>Project Cost</u><br/>\$70,000,000</p> |

# HILLCREST REPLACEMENT HOSPITAL



| Date of Completion | Description   | Facts                               |  |
|--------------------|---|-------------------------------------|--|
| 2032-ish           | New Replacement Hospital for Hillcrest. Approximately 400-500 new beds, Central Plant, Parking, and new OSHPD Central Plant. A Wellness center and Multi-Purpose building will also be constructed as part of Phase One. Real Estate will also construct approximately 1,000 staff and faculty apartments and a public park | <u>Square Footage</u><br>1,000,000+ | <u>Project Cost</u><br>Approx.<br>\$2.0+ billion |

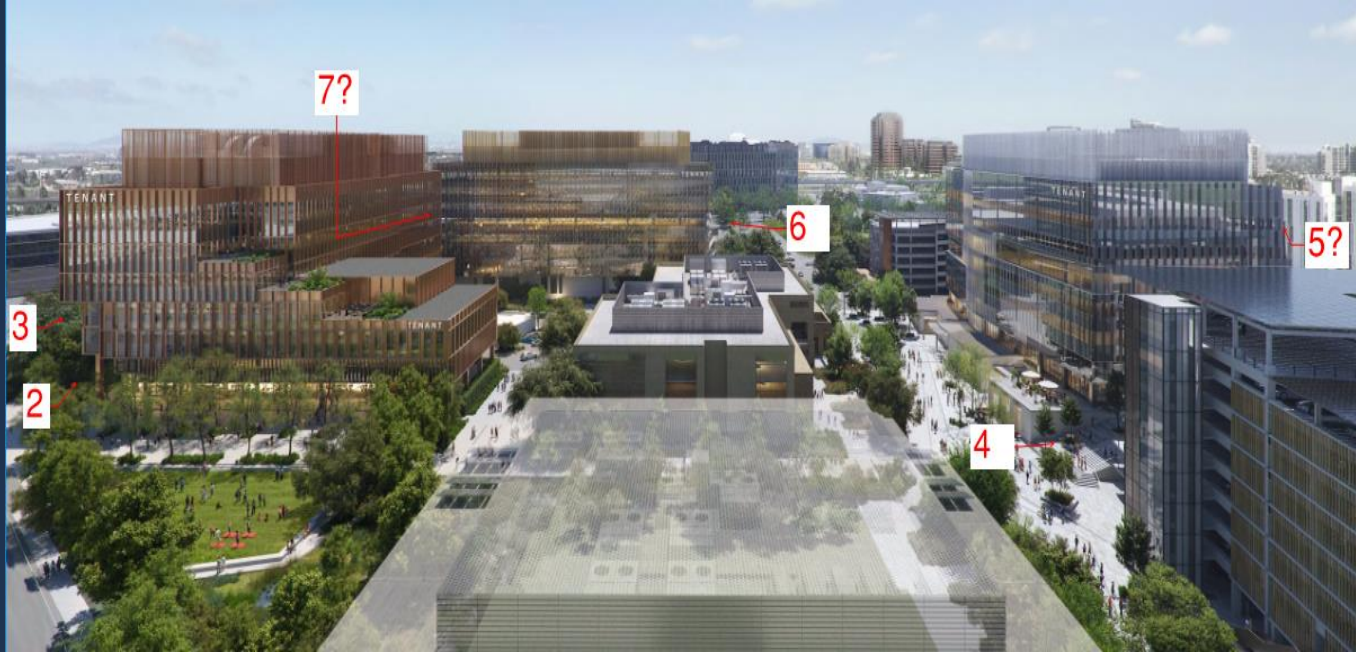
# EAST CAMPUS – NEW TOWER & OUTPATIENT PAVILION



| Date of Completion   | Description   | Facts  |                                   |
|----------------------|---|--|-----------------------------------|
| Early 2028 – 2031ish | New 250 bed +/- OSHPD1 Hospital Tower & New 200,00gsf +/- OSHPD 3 Outpatient Pavilion | <u>Square Footage</u><br>500,000<br>gsf/200,000gsf | <u>Project Cost</u><br>\$1.75B+/- |



# EAST CAMPUS – SCIENCE RESEARCH PARK



| Date of Completion | Description | Facts                 |                     |
|--------------------|-------------|-----------------------|---------------------|
|                    |             | <u>Square Footage</u> | <u>Project Cost</u> |

# MISCELLANEOUS

**Multiple Renovations and Infrastructure Projects at Various Locations for Health System and Campus totaling >\$20,00,000 annually**

- *Range in size and complexity from \$1,000,000 to \$5,000,000 plus for Health and Campus*
- ***CPD** – Generally – Projects <\$1,000,000 for Health System*
- ***FM** – Generally – Projects < \$1,000,000 for Campus*

UC San Diego