

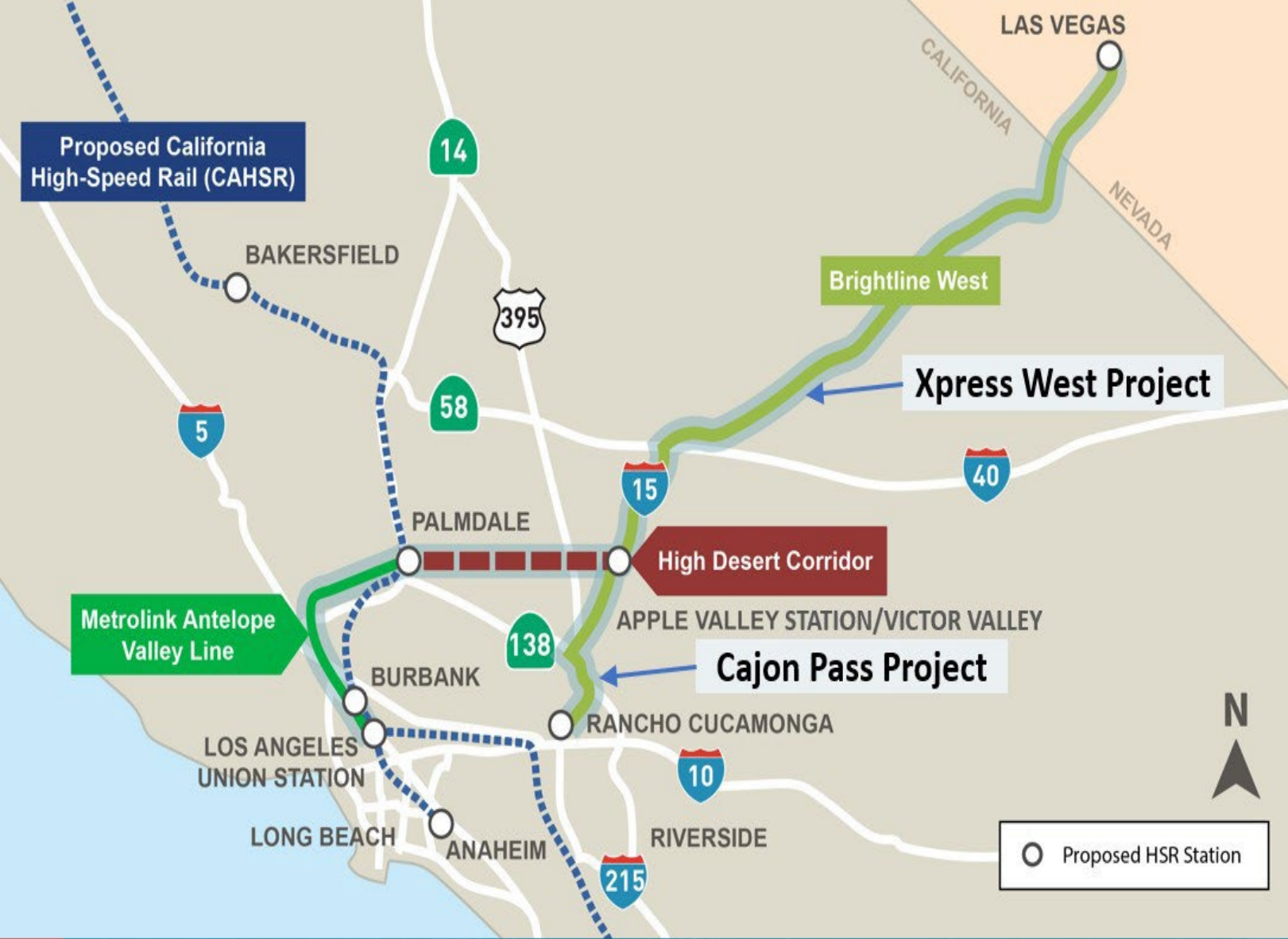


**HIGH DESERT
CORRIDOR**
JOINT POWERS AGENCY



**Update by
Arthur V. Sohikian
Executive Director
High Desert Corridor Joint Powers Agency
Fall 2023**

HDC CONNECTS CA HIGH SPEED RAIL & BRIGHTLINE WEST



54-mile High Speed Rail project

Connects future CA HSR & Brightline West

Stations at Palmdale/LA County & Victor Valley/San Bernardino County

Public-Private Partnership prospects

Measure M Expenditure Plan includes \$170M in FY2019-21 for project development activities & \$1.845B for construction in 2063-67

Entire route within Equity Focused Communities

HDC JPA BACKGROUND

- 2008 Measure R includes EIR funding and San Bernardino receives federal funds for their share.
- June 2016, Multipurpose Corridor CEQA approved LPA contains Highway with High Speed Rail Line in median.
- November 2016, Measure M Expenditure Plan includes \$170M in FY2019-2021 for ROW, project development activities & \$1.845B in 2063-2067 for construction. HDC will create a High Speed Rail Project Funding Plan that will seek to “convert” Measure M construction funds to 2030 dollars.
- August 2018, HDC JPA Board decides to focus on high-speed rail as the first component of the LPA.
- Dec 2020, Caltrans declares Highway “No-Build” and FWHA hands the project to the Federal Railroad Administration for the high speed rail component.
- Feb 2022, FRA becomes NEPA Lead agency of the HDC HSR Project.
- September 2022, High Desert Corridor Joint Powers Agency reconfigures member jurisdictions to include 6 members; Los Angeles County, Los Angeles County Metropolitan Transportation Authority (LA Metro), Cities of Lancaster & Palmdale in LA County and Adelanto & Victorville in San Bernardino County.

HDC JPA MILESTONES

- January 2023: Metro Board approves \$8.5M in Measure M local match for federal & state grant opportunities for the HDC High Speed Rail Project.
- February 2023. FRA NEPA Kick-off mtg. NEPA completion with ROD estimated by Fall/Winter 2024.
- March 2023: HDC JPA applies for entrance into the FRA Corridor Identification & Development Program seeking \$500,000 in grant funds leveraging Measure M and CA TIRCP funds. Grant awards likely in Winter 2023.
- May 2023: HDC JPA and LA Metro approve FY24 Budget. Budget highlights: continued NEPA/ROD work with FRA, procure Program Management Support Services & Financial Advisory Services to conduct 30% Preliminary Engineering/Design. PE 30% Design contract award expected in FY25 budget.
- April 2023: HDC JPA receives \$8M CalSTA Transit & Intercity Rail Capital Program grant for 30% PE Design. California Transportation Commission TIRCP grant allocation December 7, 2023.

NEPA and Project Next Steps

NEPA Next Steps

- **Summer/Fall 2023** – Consulting with tribes, State Office of Historic Preservation (SHPO) and others on the APE, cultural resource surveys and investigations
- **Winter/Spring 2024** – Evaluating effects on cultural resources, including indirect effects; and informal consultation with USFWS regarding Desert Tortoise impact reduction
- **Spring/Summer 2024** – Complete Section 106 process, Section 7 consultation and finalize NEPA Re-evaluation
- **Fall/Winter 2024** – FRA issues Record of Decision (ROD) – NEPA complete

PROJECT NEXT STEPS

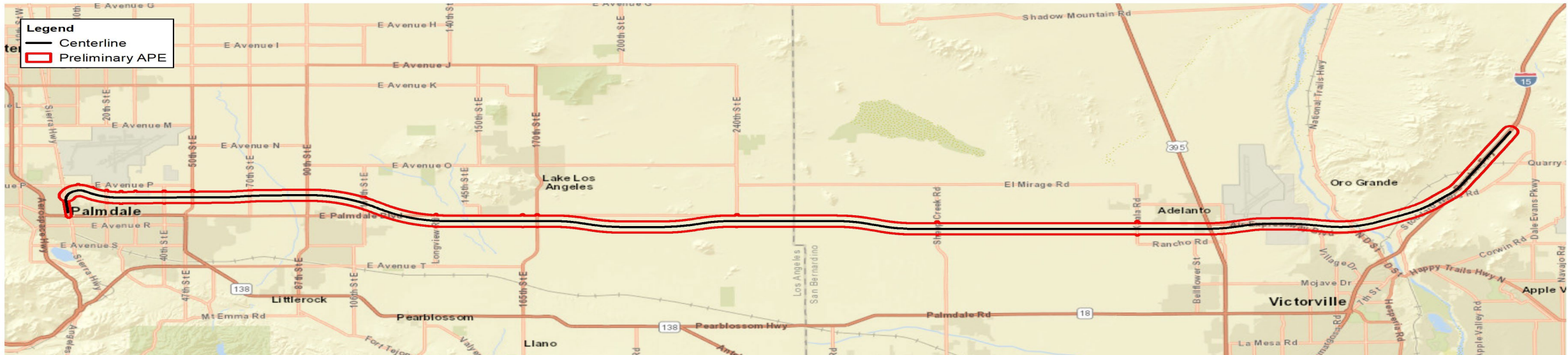
- | | | |
|---|------------------|--------------|
| • Preliminary Design/Engineering to 30% level | Start early 2025 | End Dec 2027 |
| • Final Design/Engineering to 60% w/Right of Way Acquisition/pre-construction | Feb 2028 | End Dec 2030 |
| • 100% Design/Engineering and Construction | Start 2030 | End 2033 |
| • Revenue Operations of HSR btwn Palmdale and Victor Valley | 2034 | |

HSR Project Changes



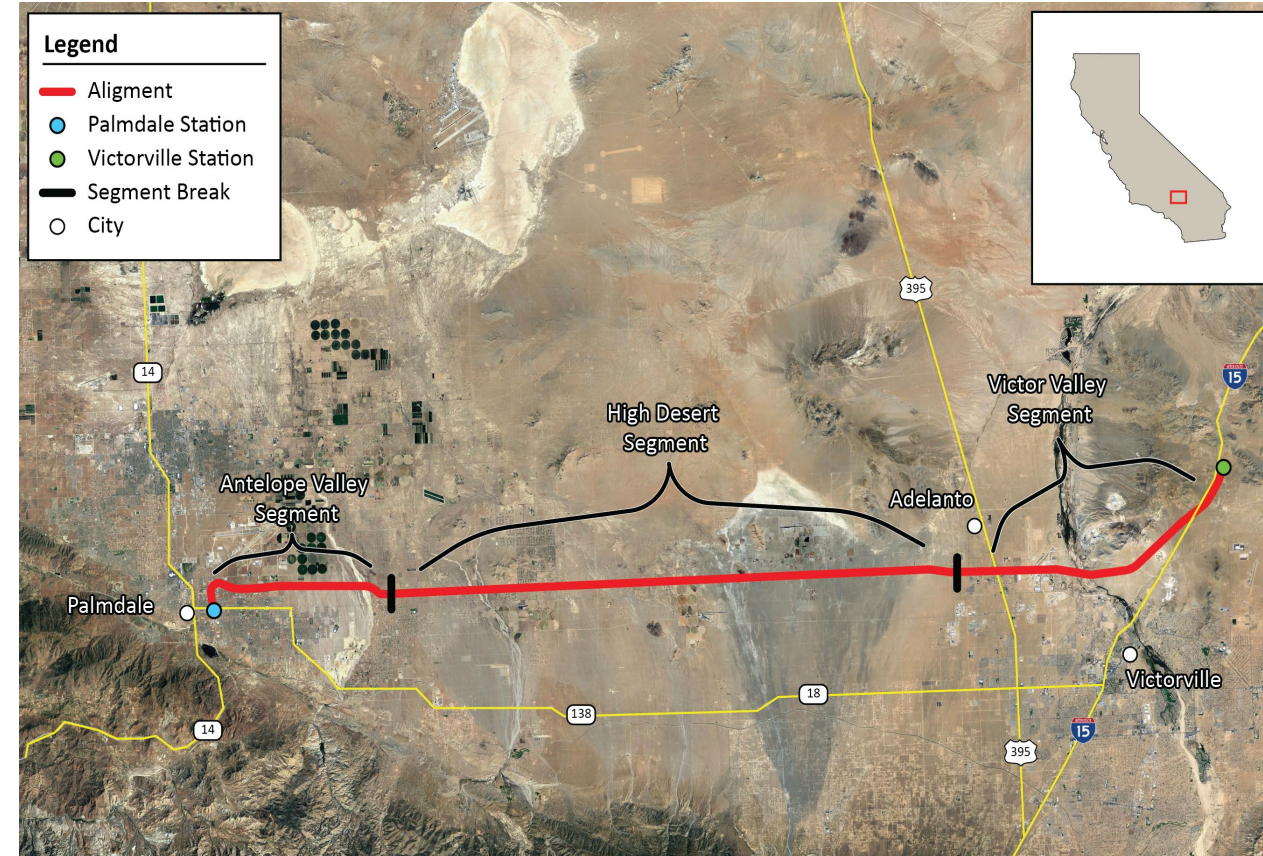
HDC High Speed Rail project changes from 2016 CEQA Locally Preferred Alternative

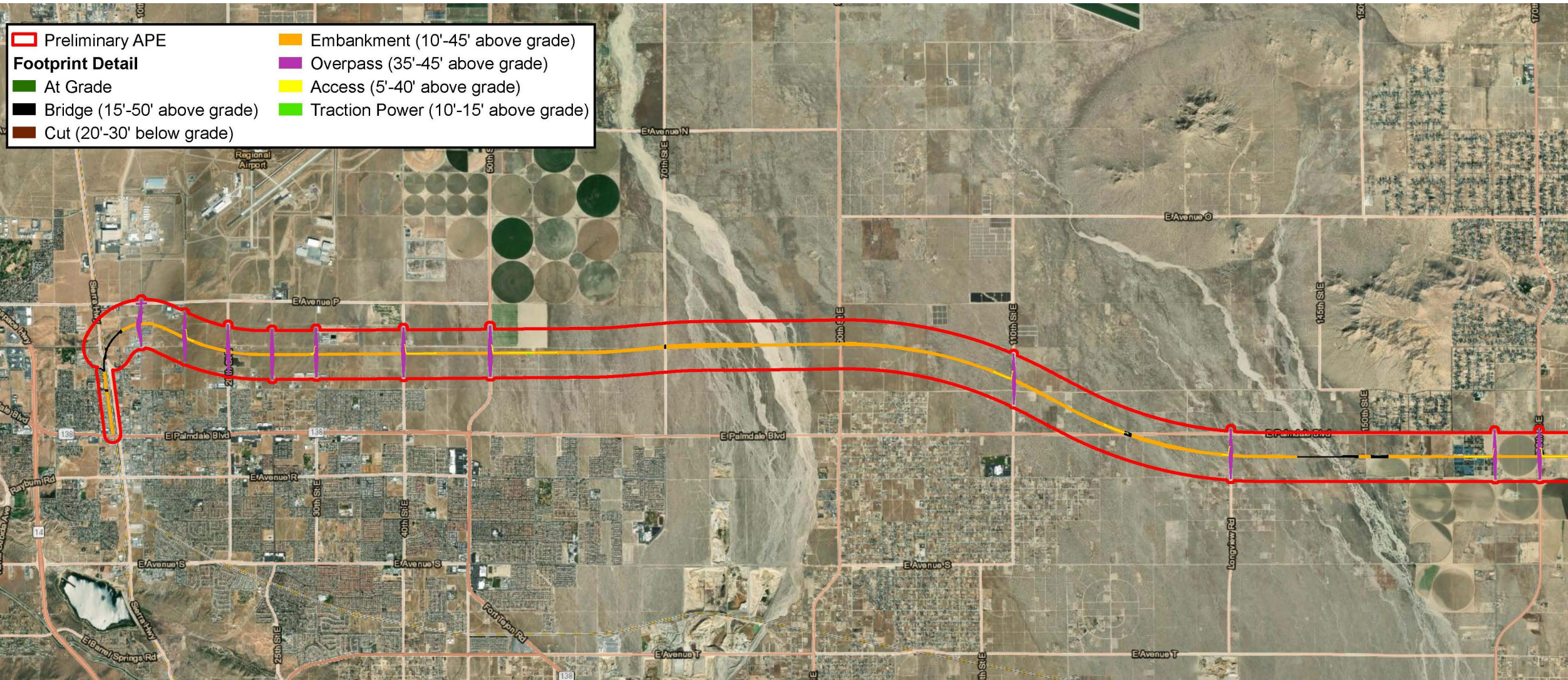
- **Removal of Freeway Component, Caltrans “No-Build” Alternative, Dec 2020.**
 - Rail alignment between Palmdale and Victorville is located within footprint studied by Caltrans EIR/EIS except:
- **Palmdale Station Connection** – Revised to connect to current California HSR Palmdale Station design – realigned approximately 1.5 miles of track alignment
- **Victor Valley Station Connection** – Revised to connect to Brightline West In-line station at Dale Evans Parkway in Apple Valley – realigned approximately 4 miles of track alignment











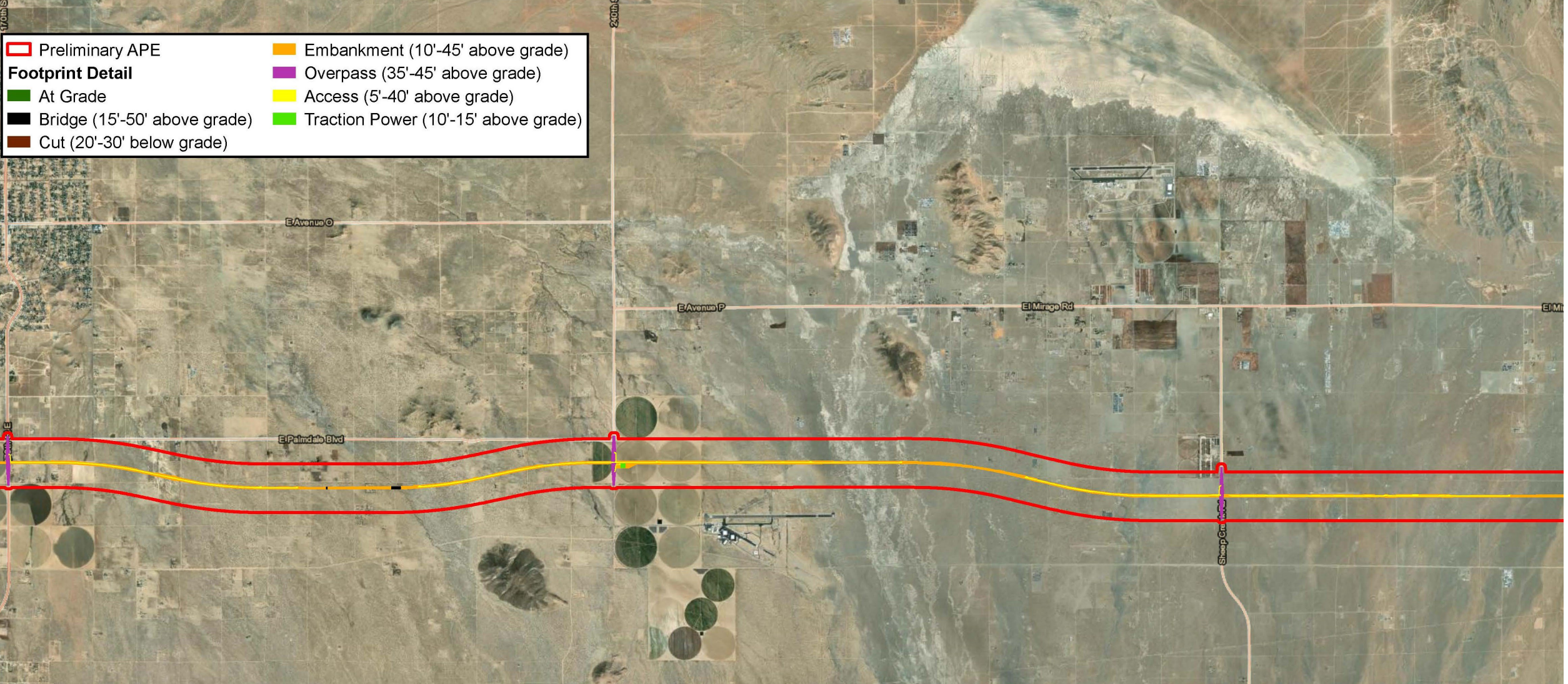
HSR Project Design Features

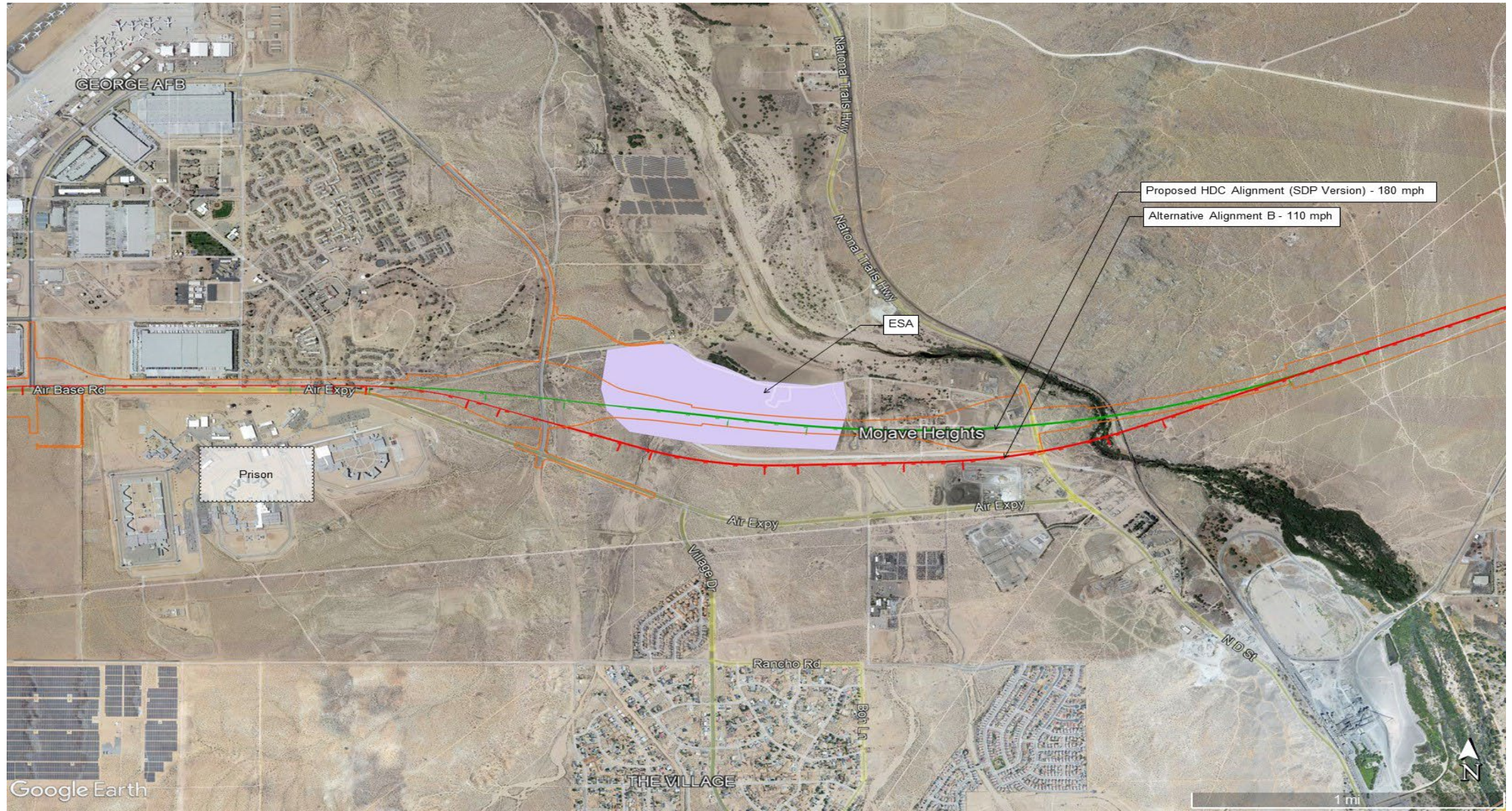
- Currently at 5-10% design
- 3 Segments:
 - Antelope Valley (9 miles)
 - High Desert (26 Miles)
 - Victor Valley (21 miles)
- Anticipated train speed=186mph max/Design 220mph
- Anticipated average Limits of Disturbance width=230 ft
- Anticipated height of train plus catenary elements=25 ft
- Anticipated average height of embankment = 10-20 ft
- Anticipated average height of bridges/overpasses=40-50 ft
- Anticipated average excavation depth, structures=80ft
- Anticipated maximum excavation depth, pilings = 60-150ft











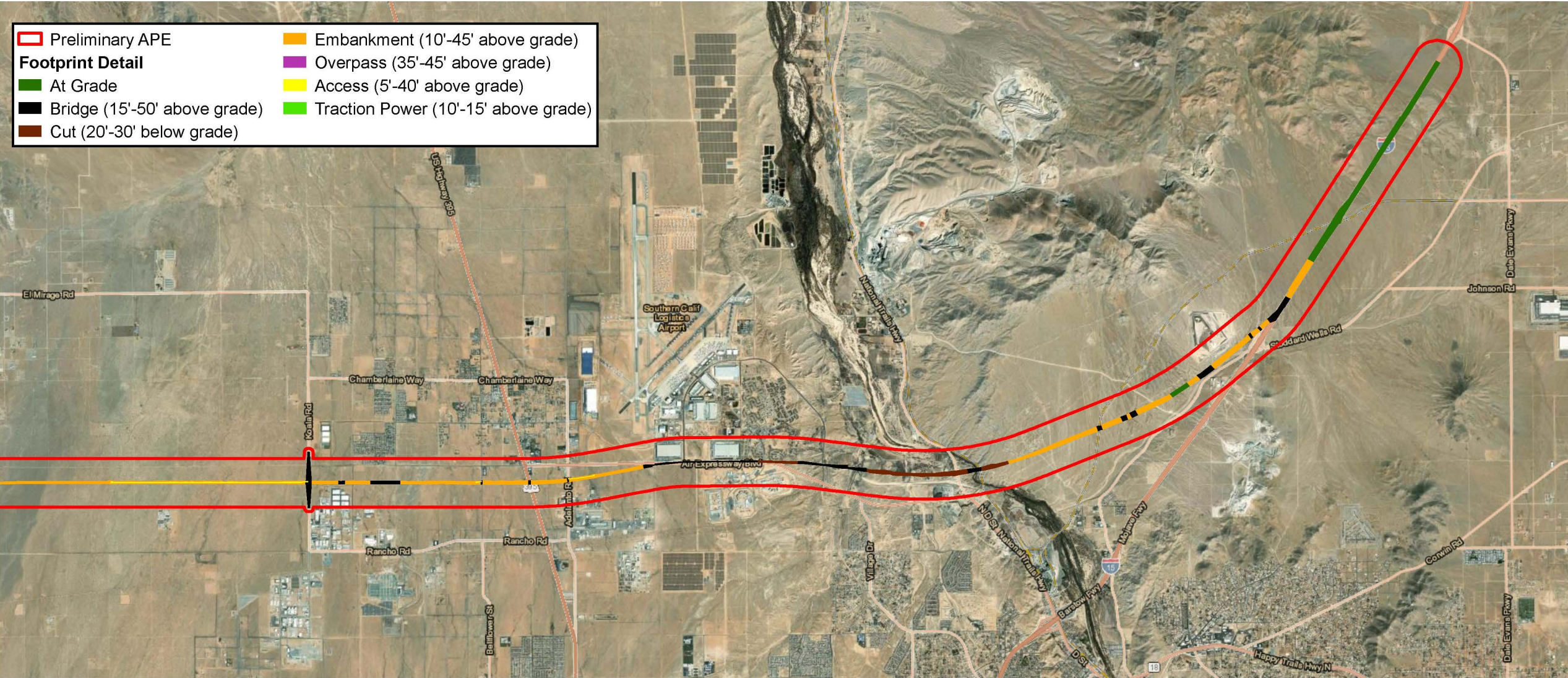


	Preliminary APE		Embankment (10'-45' above grade)
Footprint Detail			Overpass (35'-45' above grade)
	At Grade		Access (5'-40' above grade)
	Bridge (15'-50' above grade)		Traction Power (10'-15' above grade)
	Cut (20'-30' below grade)		





- | | | | |
|---|------------------------------|---|--------------------------------------|
|  | Preliminary APE |  | Embankment (10'-45' above grade) |
| Footprint Detail | |  | Overpass (35'-45' above grade) |
|  | At Grade |  | Access (5'-40' above grade) |
|  | Bridge (15'-50' above grade) |  | Traction Power (10'-15' above grade) |
|  | Cut (20'-30' below grade) | | |





HIGH DESERT CORRIDOR

JOINT POWERS AGENCY





RESTAURANT

OFFICE

TO TRAINS

HDC

HDC

HDC

PALM DALL



SCHEDULES

meet me in the
GAP

HDC

PALM DALL
HDC



STATION

RET

HDC



HIGH DESERT CORRIDOR

JOINT POWERS AGENCY

