

Capital Improvement Program Forecast 2024



Construction Network
January 16, 2024

Terri Mestas
Chief Development Officer



\$30 Billion Capital Improvement Program

LAWA has the industry's largest and most complex Capital Improvement Program

Terminal Development Program

- The West Gates at Tom Bradley International
- Terminal 1.5, 2, 3, 4, 5, 6
- Terminal 4.5 Core
- Terminal 5.5 Core
- West Gates Extension

Landside Access Modernization Program

- Automated People Mover System
- Consolidated Rent-A-Car Facility
- Auxiliary Curbs
- LAX Economy Parking Facility

Airfield and Terminal Modernization Program

- Concourse 0
- Terminal 9
- New elevated roads and entrance to LAX
- Airfield enhancements

Airport Development Program

- New Roads and Improvements
- Airport Police Facility
- Cargo Complex

LAX Landscape Program

LAX Wayfinding Program

BUILDING A BETTER LAX

LAX

Owner of Choice - Continuous Improvements

- Outreach and Transparency
- Targeted Proposals Requirements
- Firm Sizes to include Microbusinesses
- Design and Construction Handbook Update
- New Division One
- Insurance requirements
- Common Rates
- Prompt Payment
- LAWA Contractor Assessment (LAWACA)
- Inclusivity and Community Impact

CIP Projects Operational by 2028

Terminals

- Terminal 2/3 Modernization
- TBIT Core & APM Interface
- Terminal 6 Modernization
- Terminal Cores
- Midfield Satellite Concourse (MSC) South
- TBIT Optimization
- Terminal 4 Baggage Handling System
- Terminal 4/5 Modernization
- Landscaping Improvement Program
- Wayfinding Program

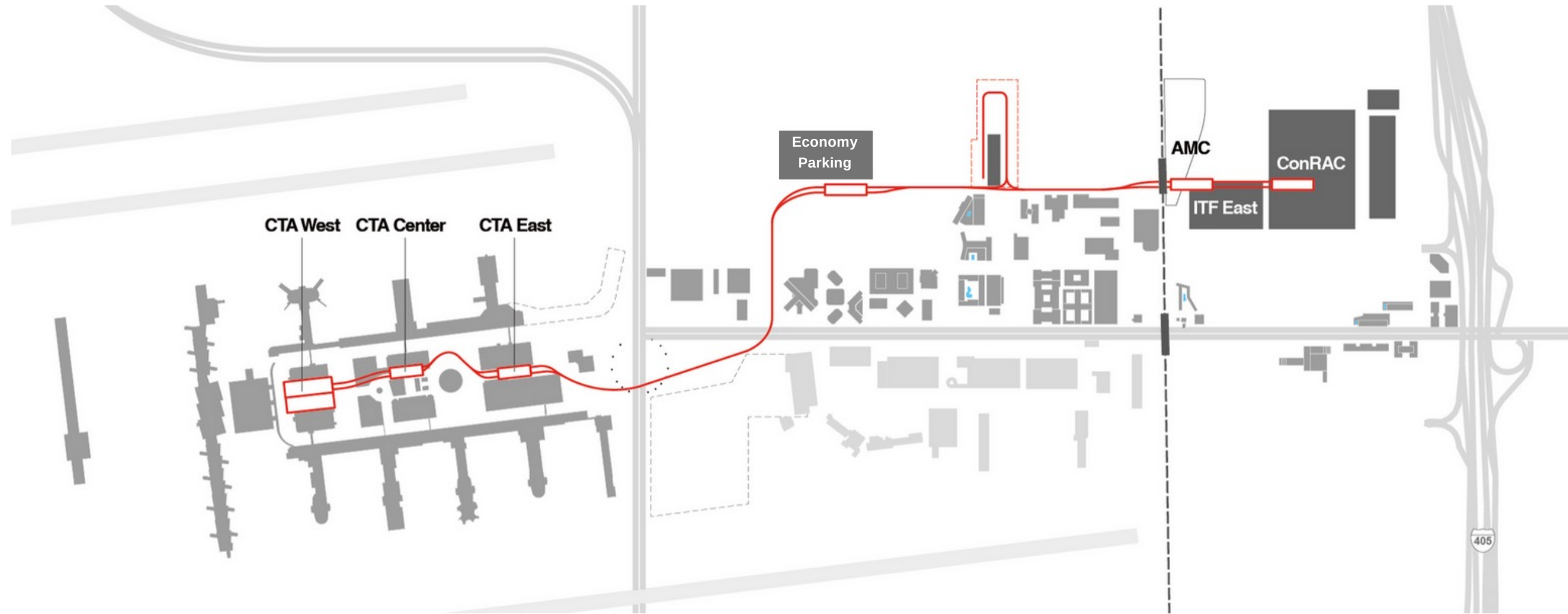
Landside (LAMP)

- Consolidated Rent-A-Car (CONRAC)
- Automated People Mover (APM)
- ITF Auxiliary Curbs
- Receiving Station – X (RS-X)
- Smart Parking System Infrastructure

Airside (Taxiway & Runways)

- Taxiway D Extension Project
- North Airfield Exit Taxiways
- Taxilane C6 Reconstruction
- Enabling Taxiway C East Extension
- Taxiway D and Easterly Extension
- Taxilane C7 and C8 Reconstruction
- Taxiway C East Extension Phase 2

Landside Access Modernization Program (LAMP)



o Delivered

- **LAX Economy Parking**
 - \$300 million project
 - Opened in October 2021
 - Added 4,300 new parking stalls to LAX

o In Process

- **Automated People Mover**
 - \$2.5 billion project
 - 2.25-mile elevated train system with six stations
- **Rent-a-Car Facility**
 - \$1.3 billion project
 - Largest rental car facility in the world



Airport People Mover (APM)



Consolidated Rent-a-Car Facility (ConRac)



Intermodal Transportation Facility (ITF) East & West



Roadway Improvements

Automated People Mover



- Length: 2.25 mile elevated guideway
- Six Stations: Three outside the Central Terminal Area and three inside
- Train Capacity: 200 passengers per train with luggage (9, 4-car trains)
- Ride Duration: 10 minutes end to end
- Frequency of Trains: Every 2 minutes during peak hours
- Operates 24/7; 365 days
- 34 of the 44 cars have been delivered
- Testing commenced in the maintenance facility

People Mover Progress



Guideway
approaching
ITFE Station



Guideway
approaching
CTA East
Station



ITFW
Station
Platform



Escalators
at ITFW
Station

CONRAC



- LEED Gold Accredited Facility (6.3M sf with capacity for 20,000 rental vehicles)
- On-premise APM station eliminates + 3,200 daily shuttle trips to / from CTA
- 8400 MWh solar power PV system
- 3700 employee parking spots with over 230 EV charging and 140 EV ready spots
- Facility was completed in April 2023
- Tenant improvement and surrounding roadways to be completed by Summer 2024
- Operations (partial) projected to start in Summer 2024 (Avis move-in date)

CONRAC Photos



ConRAC from
Concourse
Way



Aerial view
of ConRAC



ConRAC
Customer
Service Area

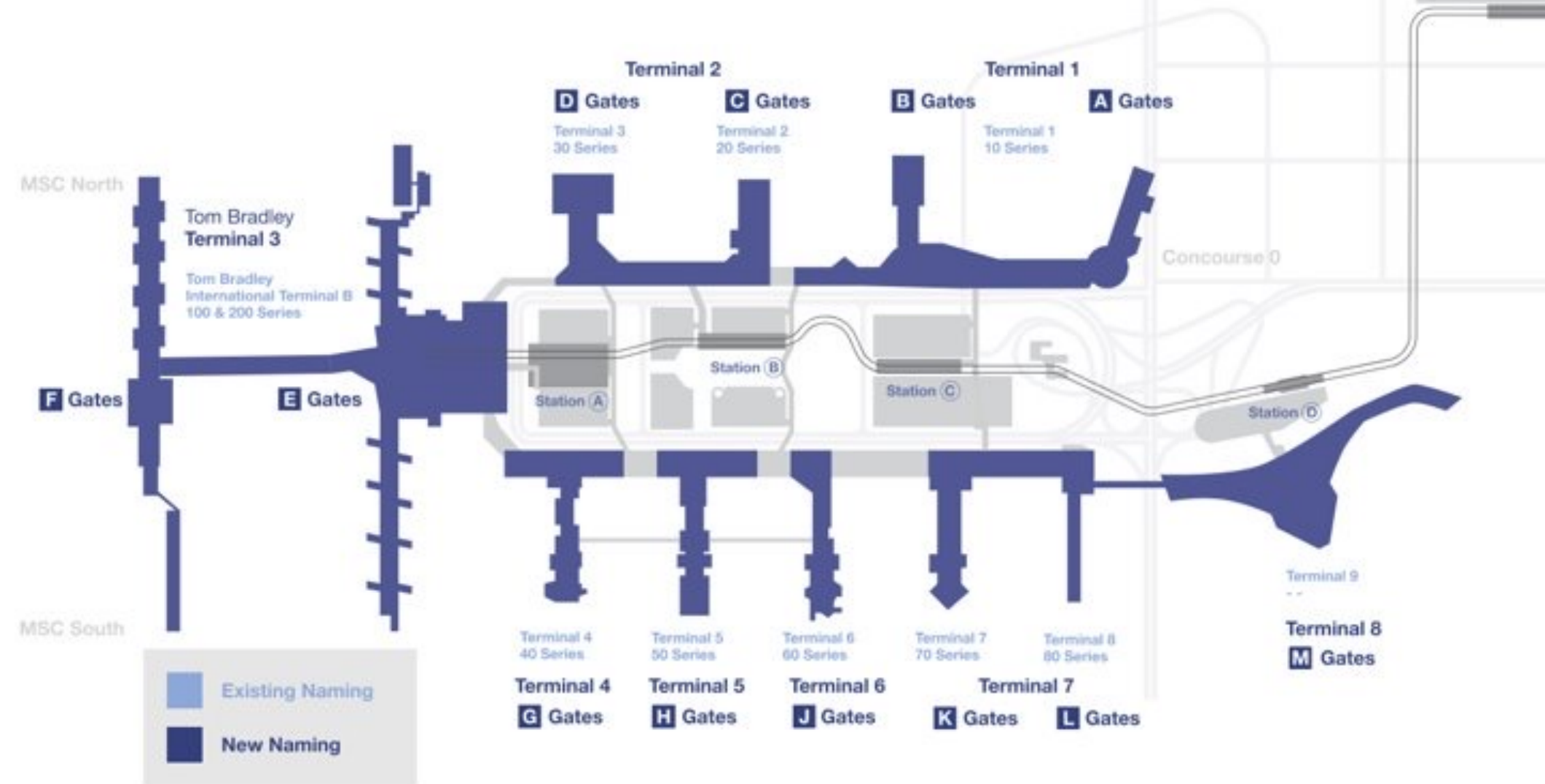


ConRAC on
Concourse
Way viewed
from under
APM
guideway

Wayfinding

Overview

- LAWA is seeking to deliver a series of new signage & wayfinding improvements throughout LAX, thereby creating an intuitive guest experience navigating to & through the LAX Campus.
- Includes all facets of the journey:
 - Virtual gateways
 - APM and associated facilities
 - Roadways
 - Parking
 - Curbside
 - Terminals
 - Concessions
 - Gates
- Includes the development of an airport-wide implementation and prioritization plan for all signage upgrades
- **Target Completion before the 2028 Olympics**



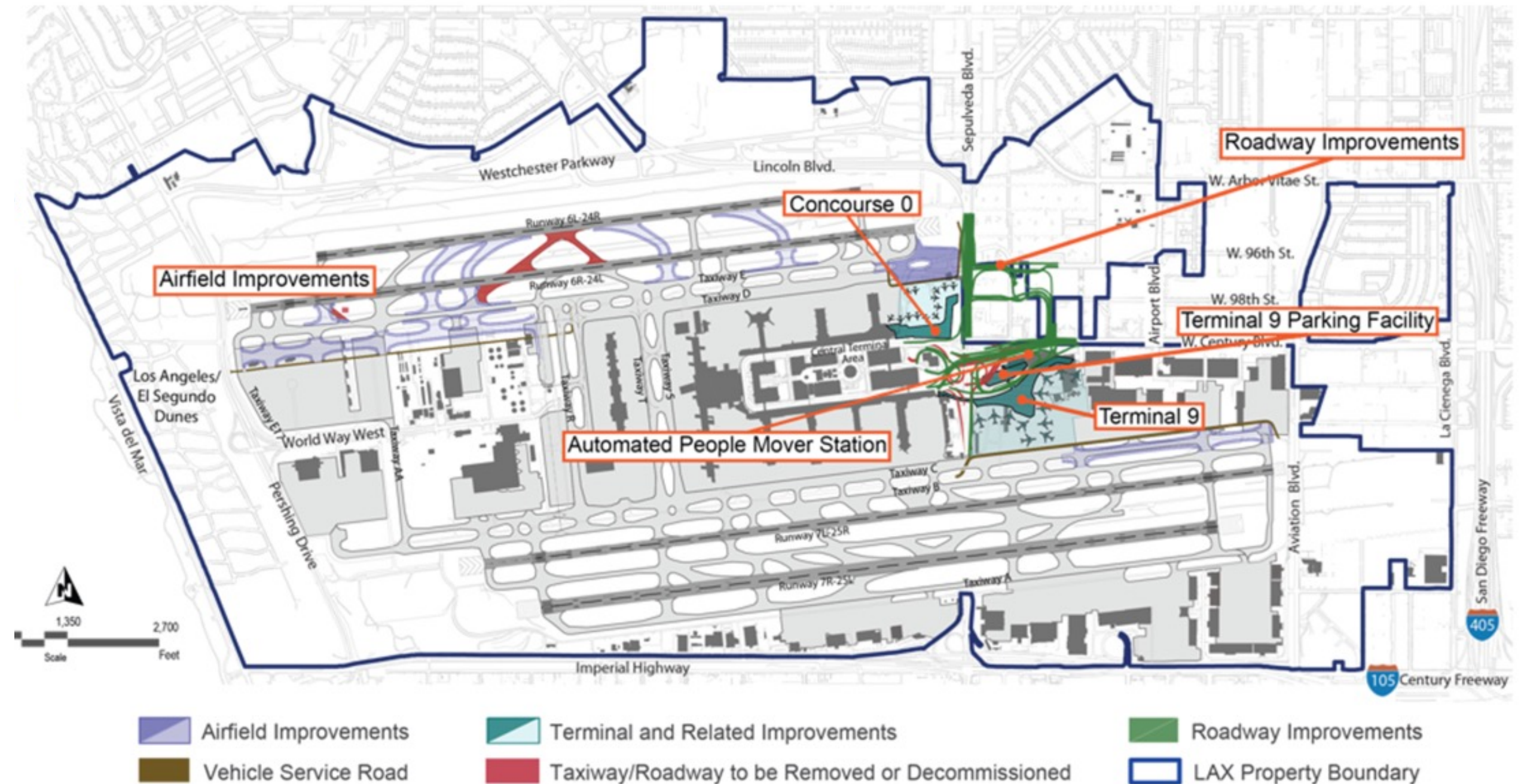
Hans Thilenius
Deputy Executive Director



Airfield & Terminal Modernization Program (ATMP)

Makes up about 70% of 2022 CIP Program Budget

- Terminal 9
- Concourse 0
- Airfield Enhancements
- Roadway system to separate airport traffic from local traffic



Terminal 9

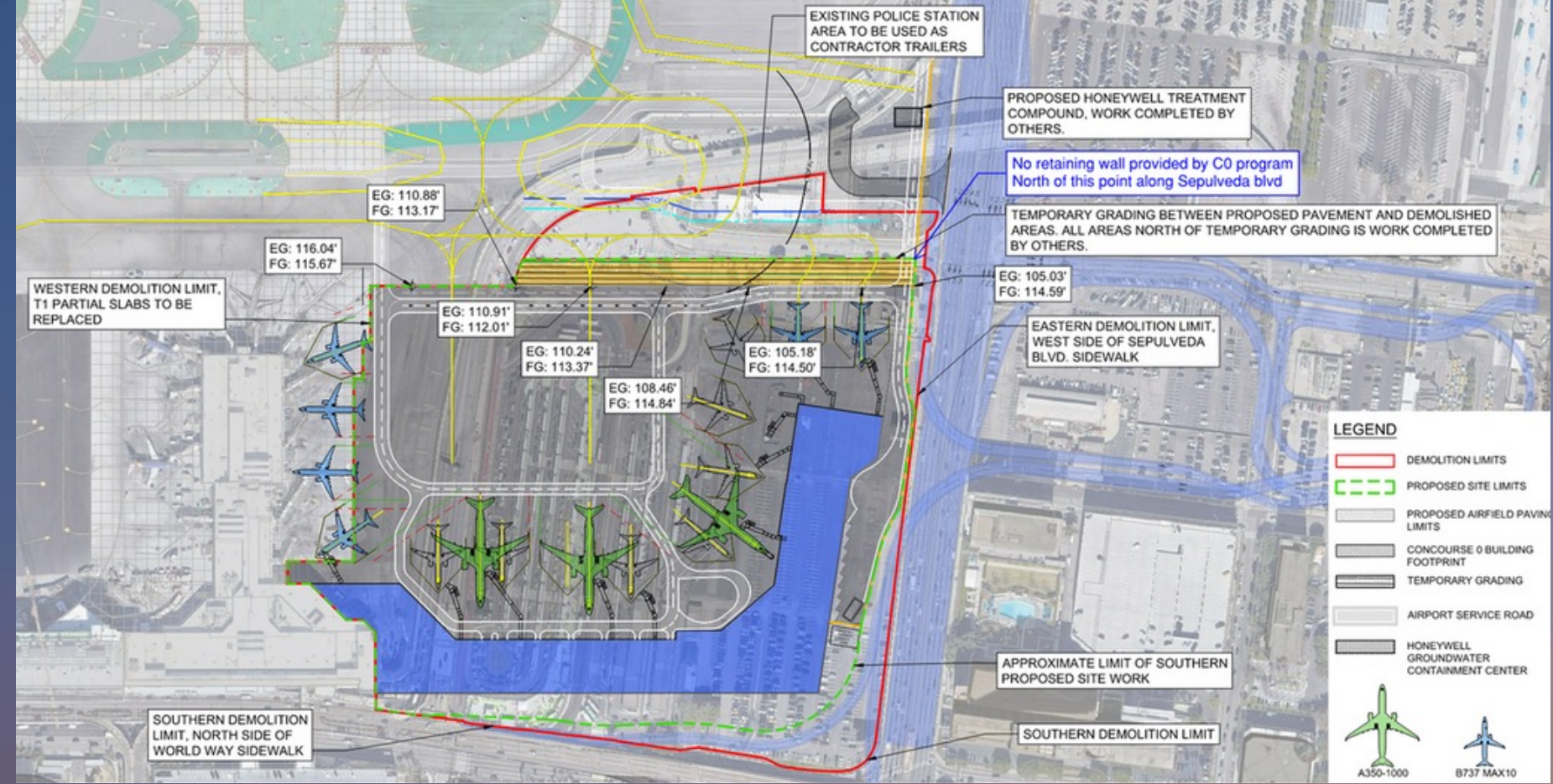


OVERVIEW

- Approx. 1.4M sq. ft of terminal building (40% larger than MSC North)
- Up to 12 Wide-Body or 17 Narrow-Body Gates
- 4-level Building Structure (Headhouse + Concourse)
- 2-levels of Parking & New Roads
- New APM Station & Pedestrian Connectivity/Walkway
- Common Use Facility serving Domestic and International Flights
- Bag Claim (Domestic and International)
- Design Procurement Completion: 1st Quarter 2024
- Construction Procurement Completion: 3rd Quarter 2024
- Target Substantial Completion: 4th Quarter 2030

Concourse 0

- Extension of Terminal 1
- 665,000 SqFt - 3 Levels
- 9 narrow-body (4 wide-body) gates
- SWA 22 total gates between C0 & T1
- New domestic/international bus gate
- Domestic baggage claim devices
- Target Substantial Completion: 4th Quarter 2029
- 60% Design Status
- Ongoing Collaboration



Midfield Satellite Concourse (MSC) South

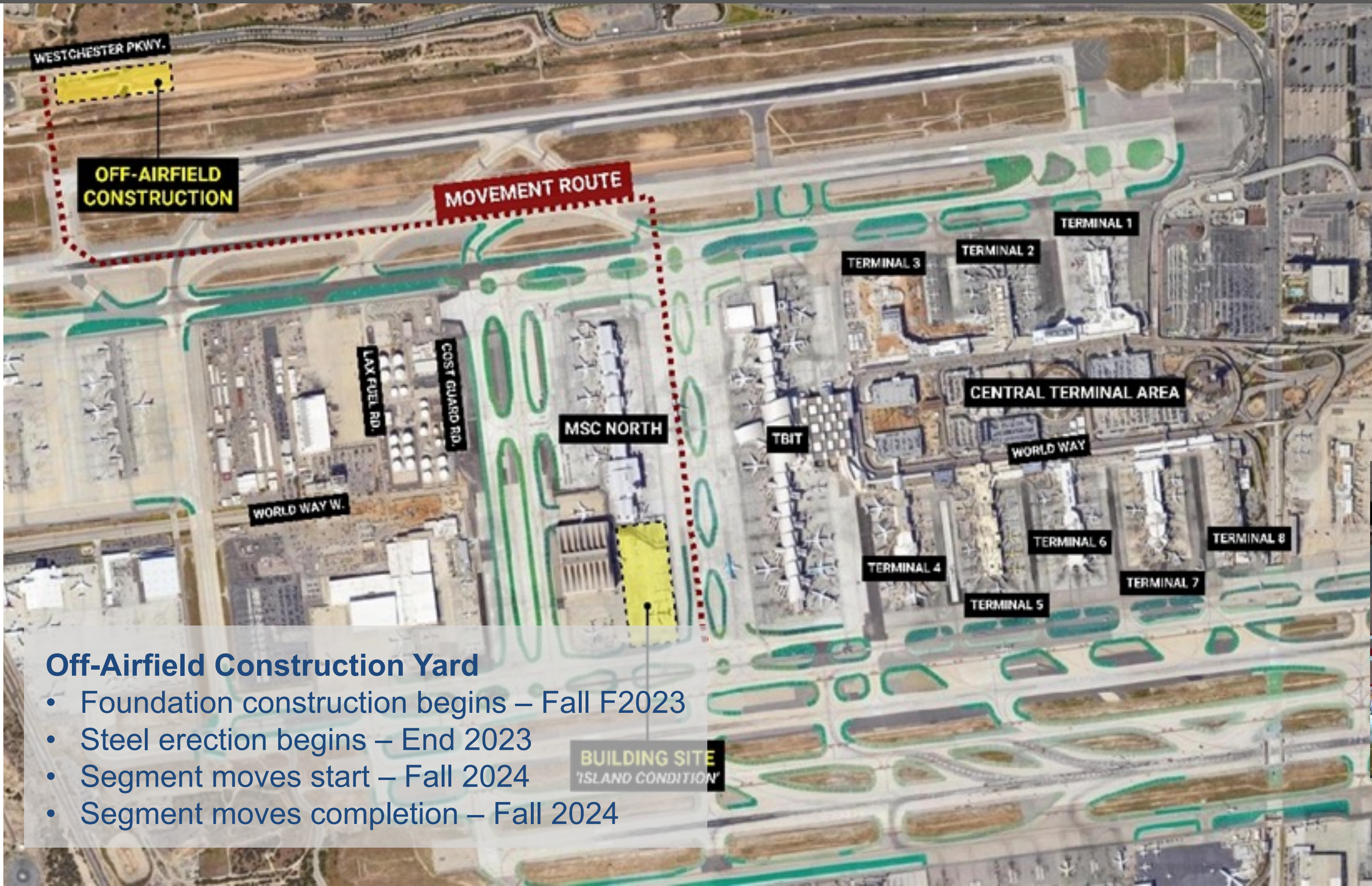


OVERVIEW

- 9 Segments
- 150,000 Sq. Ft.
- 8 ADG-III Gates
- LEED Silver
- Concessions
- Ramp Support
- Target Substantial Completion: August 2025



Offsite Construction & Relocation (OCR) Method



Off-Airfield Construction Yard

- Foundation construction begins – Fall F2023
- Steel erection begins – End 2023
- Segment moves start – Fall 2024
- Segment moves completion – Fall 2024

Landscaping

OVERVIEW

Outdoor Plazas (≈ 13 Acres) - West CTA Plaza, Central CT, Plaza, East CTA Plaza, Economy Parking Plaza

Parking Structure Façades (≈ 103,000 ft²) - Vertical Landscaping, Digital Screens & Super-Graphics, Other Technology

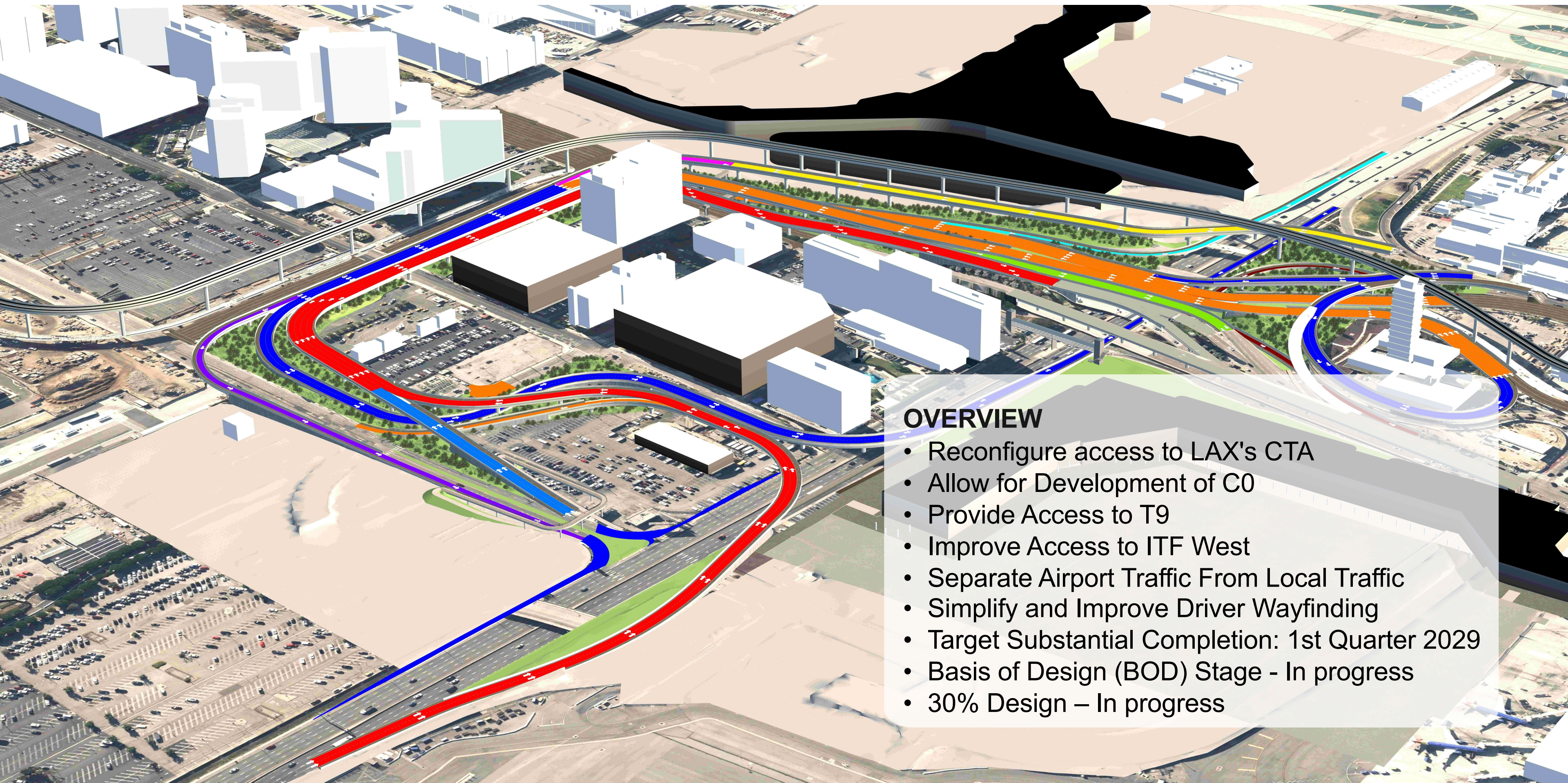
- Create green spaces
- Beautification of public spaces
- Vertical landscaping opportunities
- Curbside improvements
- Modernize landscaping
- **Target Substantial Completion: Q4 2026**



Emery Molnar
Deputy Executive Director



Roadways



OVERVIEW

- Reconfigure access to LAX's CTA
- Allow for Development of C0
- Provide Access to T9
- Improve Access to ITF West
- Separate Airport Traffic From Local Traffic
- Simplify and Improve Driver Wayfinding
- Target Substantial Completion: 1st Quarter 2029
- Basis of Design (BOD) Stage - In progress
- 30% Design – In progress

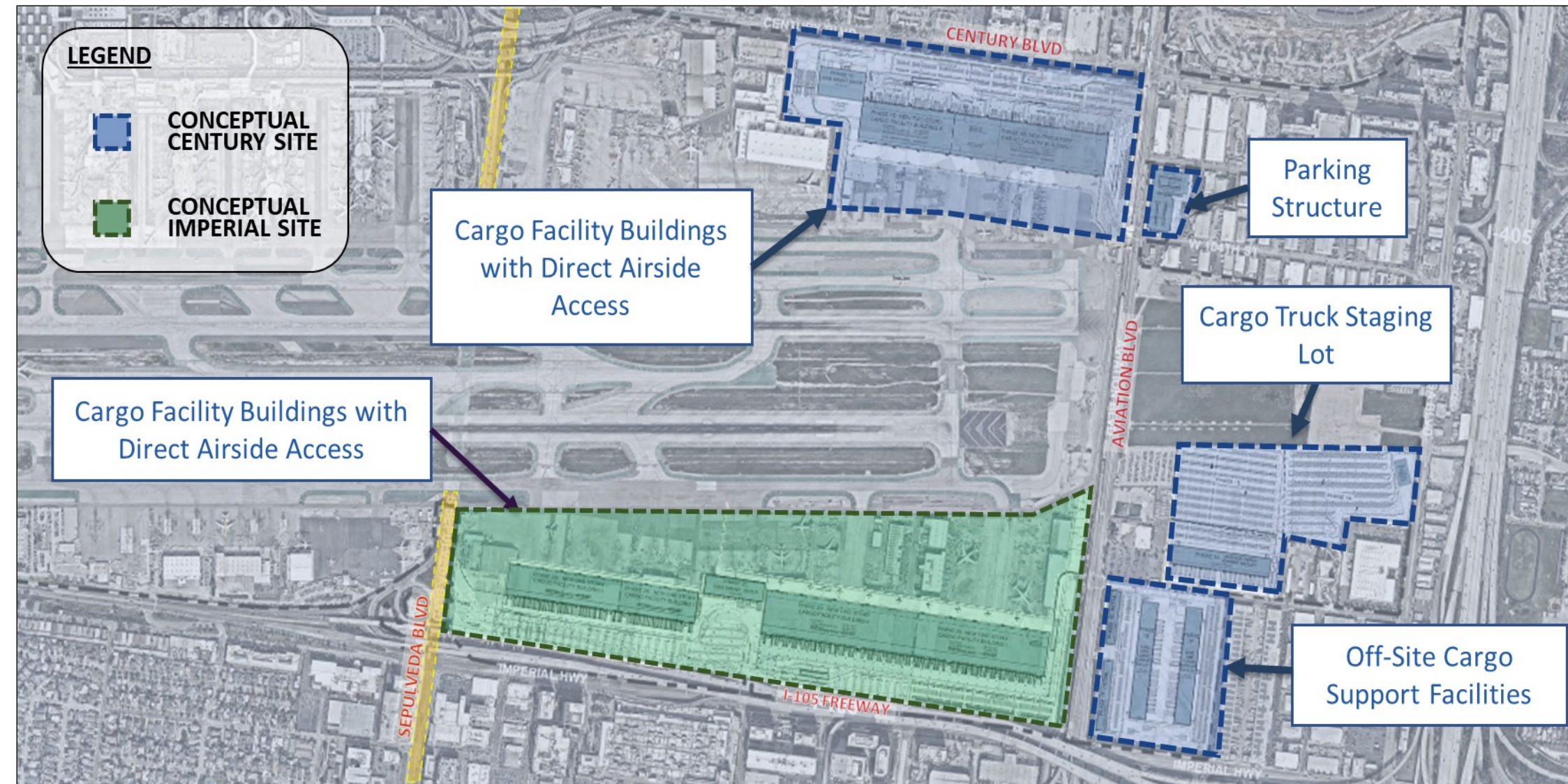
Cargo Modernization Program

Overview:

- 8th Busiest Cargo Hub in the world, over 2.9M tons in 2021
- 3 Cargo Areas covering totaling 261 acres of land
- 27 Existing Buildings totaling 2.6M Square Feet of Floor Area – Avg. age is 38 years - Heights and configurations are not optimal for storage & handling efficiency

LAWA seeks to transform LAX's cargo facilities into a state-of-the-art operation

- Optimize land use
- Co-locate compatible facilities
- Improve handling capacity and efficiency
- Incorporate innovation & advanced technology
- Improve truck staging
- Promote sustainable practices
- Increase airport revenues
- Create Positive Economic Impact



Inclusivity & Workforce Development

- **XBE Participation Requirements**

- Report DBE, MBE, WBE LGTBQ-BE participation

- **Key Staff & Organizational Chart**

- **Mentor Protégé**

- Mentor/Mentee Agreement
- Measurable Outcomes

- **Cash Flow Strategy & Prompt Payment**

- **Transformational Programs for Airport Impact Area Residents**

- Workforce Development
- Internship Program
- Scholarships

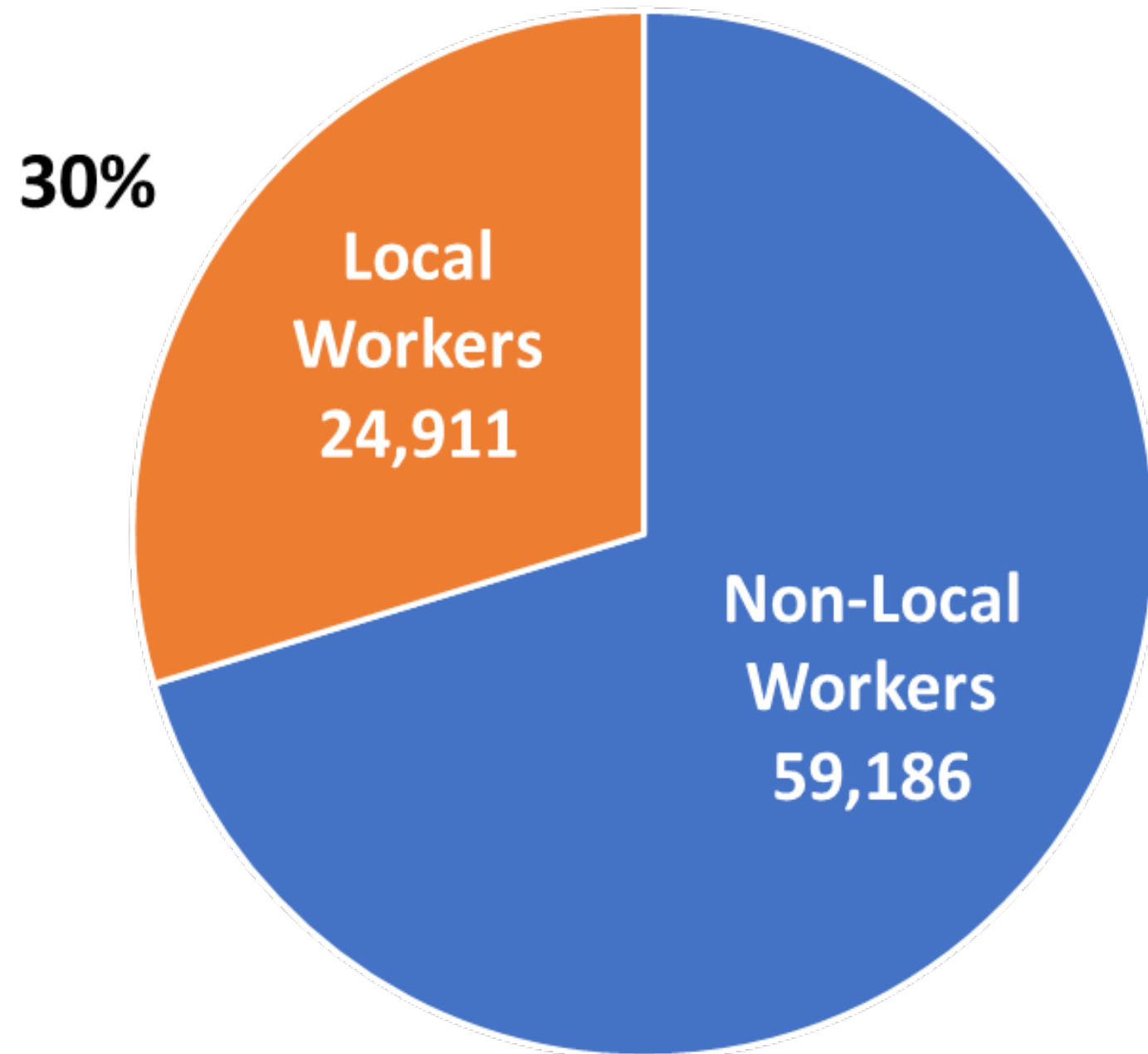
- **Community Investment**

- K-12 Title 1 Schools
- Community-At-Large

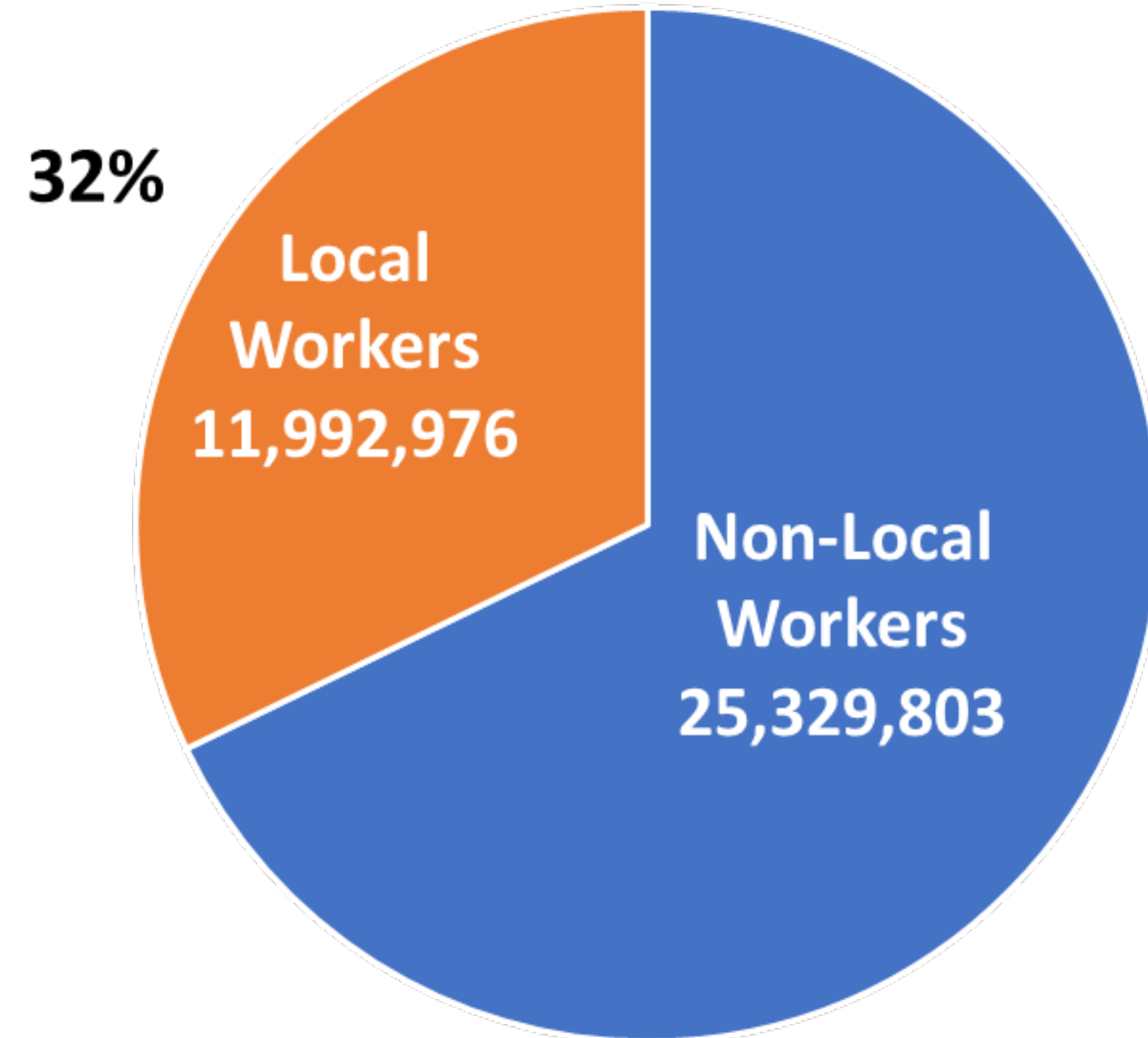
Economic Impact

CIP Local Hire and Job Creation

Total Workers: 84,097



Total Hours: 37,322,779



Economic Impact

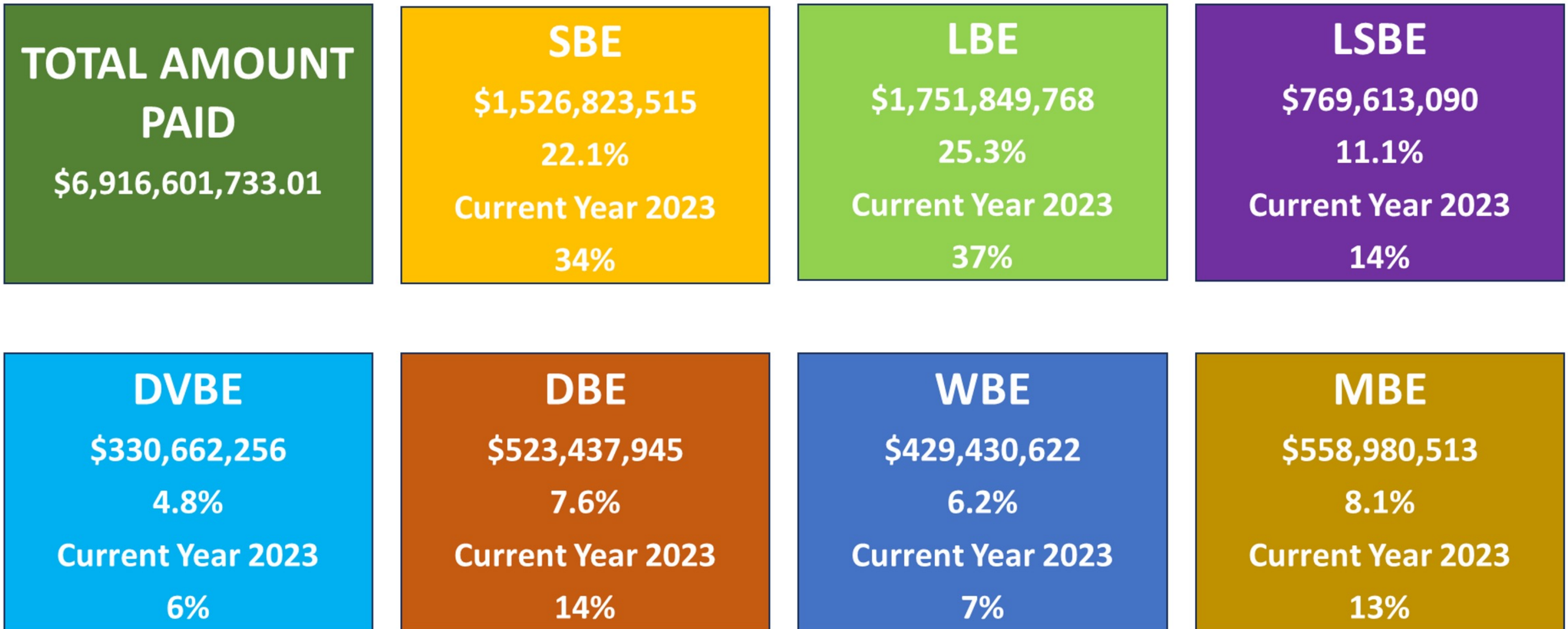
Quality Jobs & High Wages through LAMP Projects

Total # of Workers	Total # of Local Workers
24,147	7,555
Total Hours Worked by All Workers	Total Hours Worked by Local Workers
13,037,119	4,283,496
Gross Pay + Benefits	Local Gross Pay + Benefits
\$901,325,815	\$273,529,286
Average Hourly Wage (w/ Benefits)	Average Local Hourly Wage (w/ Benefits)
\$69.1/HR	\$63.9/HR



Economic Impact

CIP XBE Performance



Workforce Development

Cultivating a workforce to build and maintain a World Class airport



INTERNSHIPS



HireLAX
PATHWAY TO A CAREER IN CONSTRUCTION



INSPECTION

ImpactLAX



Connect with Us!

MATOC & Other Contract Opportunities

MATOC Construction & Design Build

Posting: Q2, 2024*

Proposals Due: Q2, 2024

Public Art Consultant Services

Posting: Q1 2024*

Proposals Due: Q2, 2024*

VNY Taxiway Reconstruction

Posting: Q1 2024*

Proposals Due: Q1, 2024*

*Tentative Date

Major Programs and Projects

Terminal 9 Construction

Posting: Q2, 2024*

Proposals Due: Q3, 2024*

Wayfinding Program

Posting: November 9, 2023

Proposals Due: January 12, 2024



Join our Network!

Contact Sophia Cavalli
Capital Improvement Program
Industry Relations

+1-424-646-8953

scavalli@lawa.org

Construction – Design Build MATOC

In Planning:

- Maintenance/Airfield Bus Parking Relocation
- T2 East Optimization
- eDAS
- T4 Restroom/Concession Scope
- T5 Headhouse & Concourse Refresh
- ATMP Roadway Improvements
- Taxilane C7 Reconstruction
- Taxilane C8 Reconstruction
- ATSAC Hub Replacement
- Roads - Enabling
- Taxiway D Extension
- Taxilane C6 Reconstruction
- Taxiway D and E Easterly Extension
- Enabling Taxiway C East Extension
- Enabling - Taxiway D and E
- Enabling Taxiway C East Extension

Access Opportunities

- Most LAWA procurements, including all competitive pursuits for Development, are posted on the Regional Alliance Marketplace for Procurement (www.rampla.org)
- Registered firms can find all opportunities advertised by LAWA, and gain access to relevant solicitation documents
- Registered firms can also receive notifications when a new project, or an update to an already advertised project, occurs in their area of business
- RAMPLA also host opportunities from all City of Los Angeles Departments
- LAWA also posts a listing of anticipated projects on its website under "Current Opportunities" (lawa.org)



LAWA Current Opportunities

[Home](#) / [Businesses](#) / [LAWA Current Opportunities](#)

CURRENT OPPORTUNITIES

Please go to RAMPLA.ORG for open competitive opportunities

[Contract Status Report\(Updated December 2022\)](#)

[Upcoming Procurements](#)

Join Us!

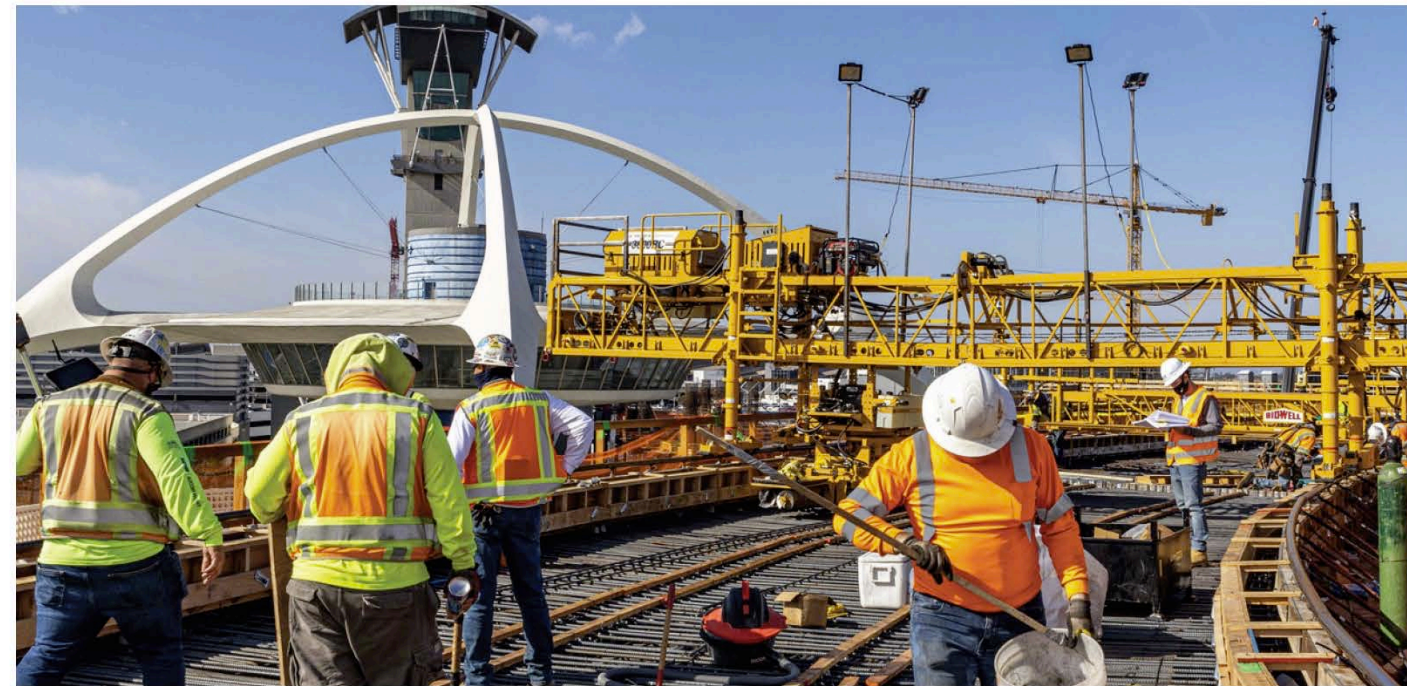
Prime Level Opportunities for
Small Contractors

Access to LAWA Team

Exhibitor Networking

Access to Bonding
Assistance

\$30 BILLION CAPITAL IMPROVEMENT PROGRAM CONSTRUCTION FORECAST 2024 INDUSTRY FORUM



JANUARY 19, 2024
9 AM - 12 PM



 Register ([Eventbrite](#))

 Inquiries:
ImpactLAX@lawa.org

- Terminal 9 Construction
- Construction/Design Build MATOC
- ATSAC Hub
- Imperial Hwy Northside Aesthetic Improvements
- VNY Taxiway Reconstruction D, E, F, Q

LOS ANGELES SOUTHWEST COLLEGE

Little Theater
1600 W. Imperial Highway
Los Angeles, CA 90047

LAWA | **LAX VNY**

Questions

