



RCTC

RIVERSIDE
COUNTY
TRANSPORTATION
COMMISSION

RIVERSIDE COUNTY TRANSPORTATION COMMISSION (RCTC) PROJECT SUMMARY

CONSTRUCTION NETWORK

January 18, 2024

Erik Galloway – RCTC Project Delivery Director

David Thomas – RCTC Toll Project Delivery Director



Riverside County Transportation Commission (RCTC)

Who is RCTC?

- RCTC funds and oversees transportation projects, from highway improvements to public transit infrastructure in Riverside County
- RCTC owns and operates the SR 91 and I-15 Tolloed Express Lanes in Riverside County
- RCTC owns and operates 9 Commuter Rail Stations and owns the Perris Valley Line which consist of 26-miles of rail
- RCTC Project Delivery team is separated into two teams
 - Toll Project Delivery – David Thomas
 - ❖ Scope: Planning, Environmental, Design, and Construction of Toll Lanes and related projects in Riverside County
 - Capital Projects Delivery – Erik Galloway
 - ❖ Scope: Planning, Right-of-Way, Environmental, Design, and Construction of Highway, Rail, and Trail projects in Riverside County
 - ❖ RCTC Capital Project Team Consists of 2 Capital Project Managers, 1 Construction Manager, and 1 Facilities Manager along with Bechtel as the Program Management Consultant with a staff of 14
 - ❖ RCTC’s Right-of-Way consists of 7 Staff along with a number of consultant support



UPCOMING PROJECTS

Toll Capital Projects Procurements (2024)

	Estimated Construction Cost
I-15 Express Lanes Project – Southern Extension PDB (RFQ 2025)	\$500 million
91 Eastbound Corridor Improvement Project PS&E (RFP 2025)	\$200 million



UPCOMING PROJECTS

Non-Toll Capital Projects Procurements (2024)

	Estimated Construction Cost
I-15 Smart Freeway Demonstration Project – Construction (Out to Bid)	\$12M
I-15 Smart Freeway Demonstration Project – ITS System Operator (RFP issued)	\$900K
Coachella Valley(CV) Rail – Environmental/Preliminary Engineering (RFP to be issued 1 st Quarter 2024)	\$40M
Santa Ana River Trail 2 - Phase 6 - Construction Management (1 st Quarter 2024)	\$3 million
Santa Ana River Trail 2 - Phase 6 - Construction (End 2024)	\$27M
Mid-County Parkway Phase 3 – Construction Management (1 st Quarter 2024)	\$16M
Mid-County Parkway Phase 3 – Construction (2025)	\$160M
South Perris Station & Layover Facility – Construction (late 2024/early 2025)	\$25M
Perris Valley Line – Double Track – Construction (late 2024/early 2025)	\$34M



UPCOMING PROJECTS

Capital Projects With CM & Construction Procurements (2025 & Beyond)

Current Project Phase	# of Projects
PA/ED Phase (Toll)	
PA/ED Phase (Rail)	2
PA/ED Phase (Highways & Misc.)	8
PS&E Phase (Toll)	
PS&E Phase (Rail)	2
PS&E Phase (Highways & Misc.)	5

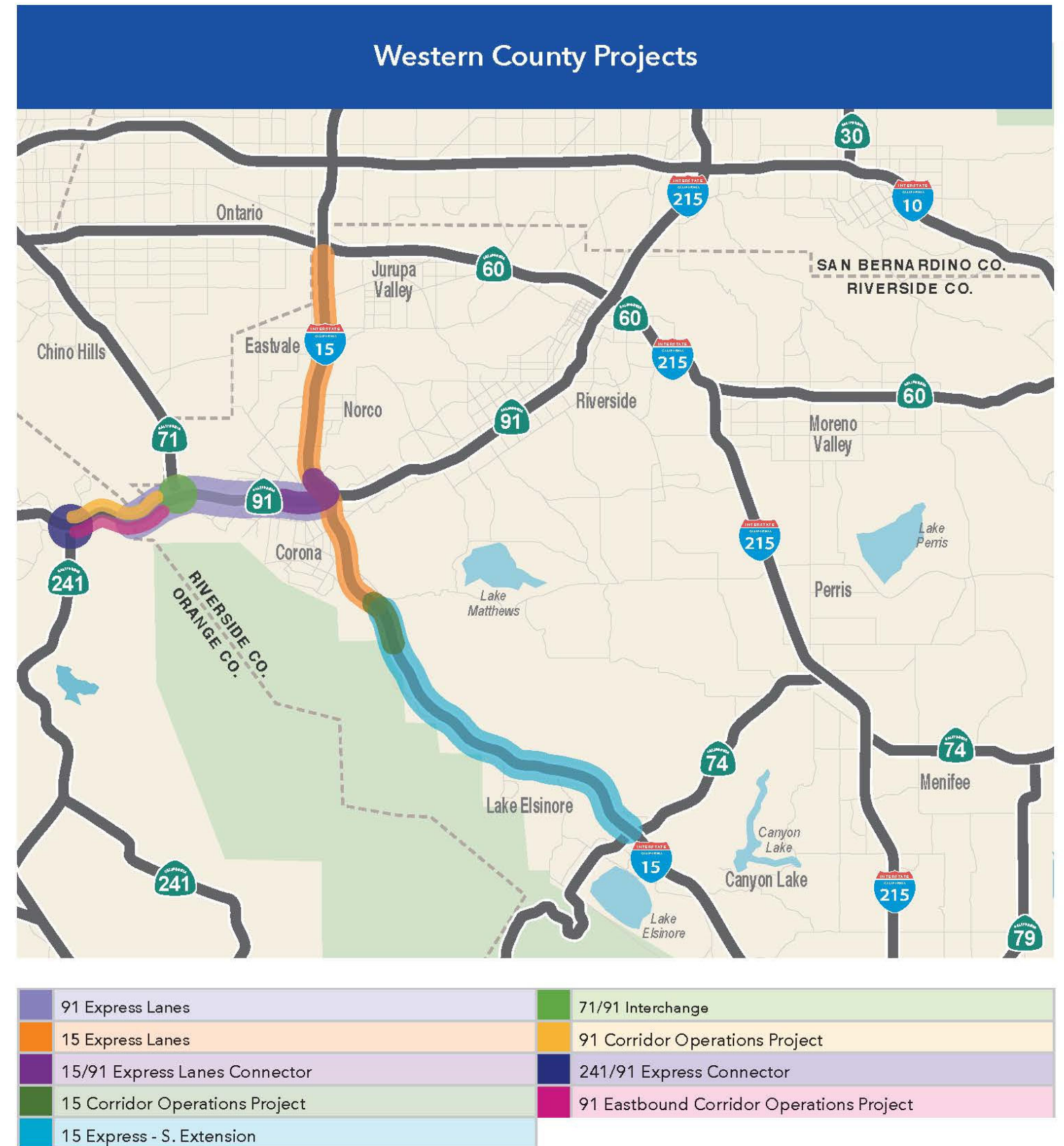


UPCOMING PROJECTS

TOLL PROJECTS

RCTC Corridor Projects

- 91 Express Lanes
- 91 Corridor Operations Project
- 15 Express Lanes
- 15 Corridor Operations Project
- 15/91 Express Lanes Connector
- 71/91 Interchange
- 241/91 Express Connector
- 15 Express Lanes – S. Extension
- 91 EB Corridor Operations Project



15 Express Lanes Southern Extension

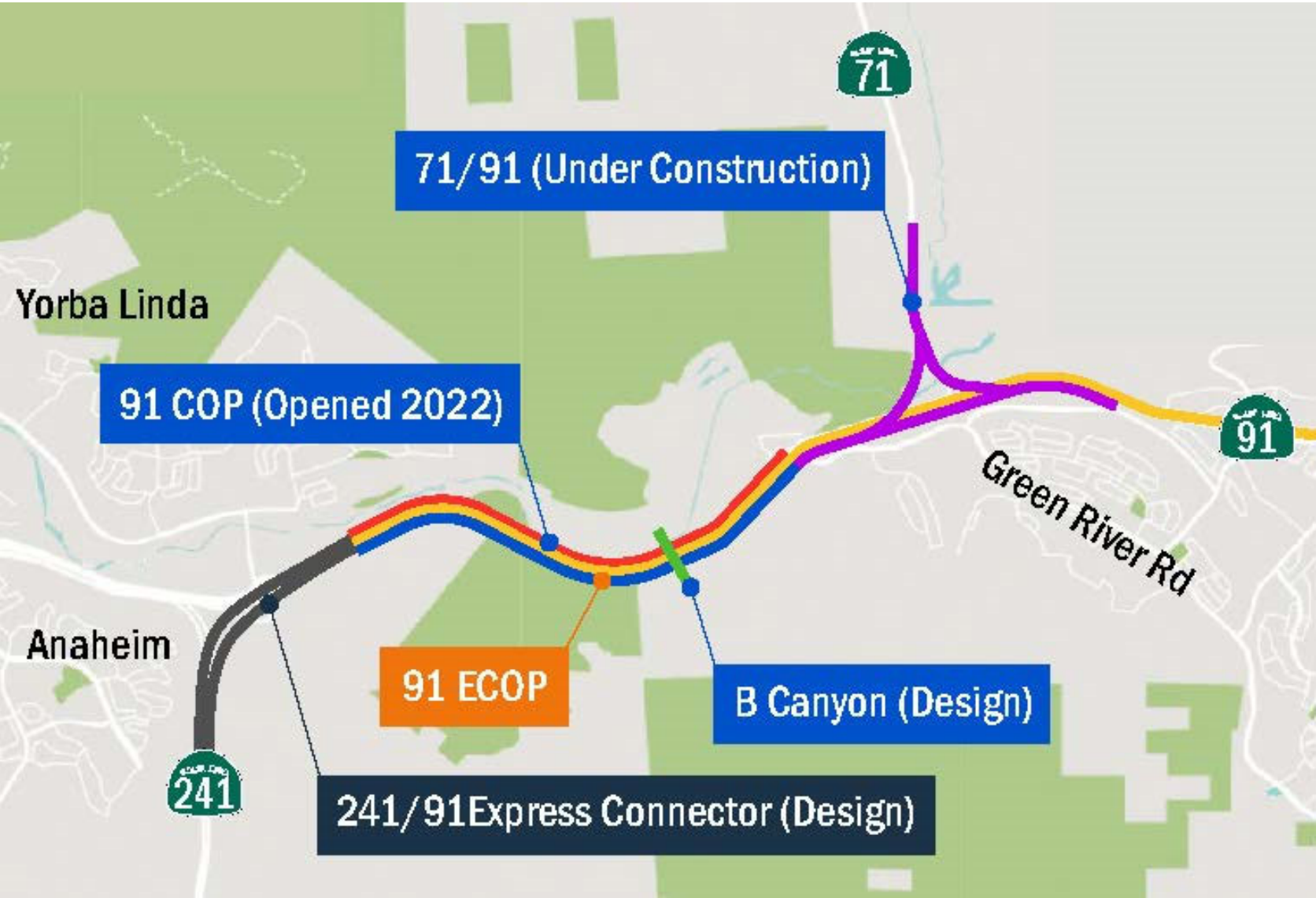
- Extend 15 Express Lanes from Cajalco Road to Route 74/Central Avenue in Lake Elsinore
- 14.5 miles, two express lanes
- \$650 million
- PA/ED completion 2025
- PCM awarded January 2024
- Progressive Design-Build RFQ 2025
- Project Completion 2030





91 Eastbound Corridor Operations Project

- 6th lane to eastbound 91
- 3 miles: 241 Toll Road to SR-71 Connector
- \$200 million
- PA/ED completion 2025
- PS&E RFP 2025
- Construction Adv 2027





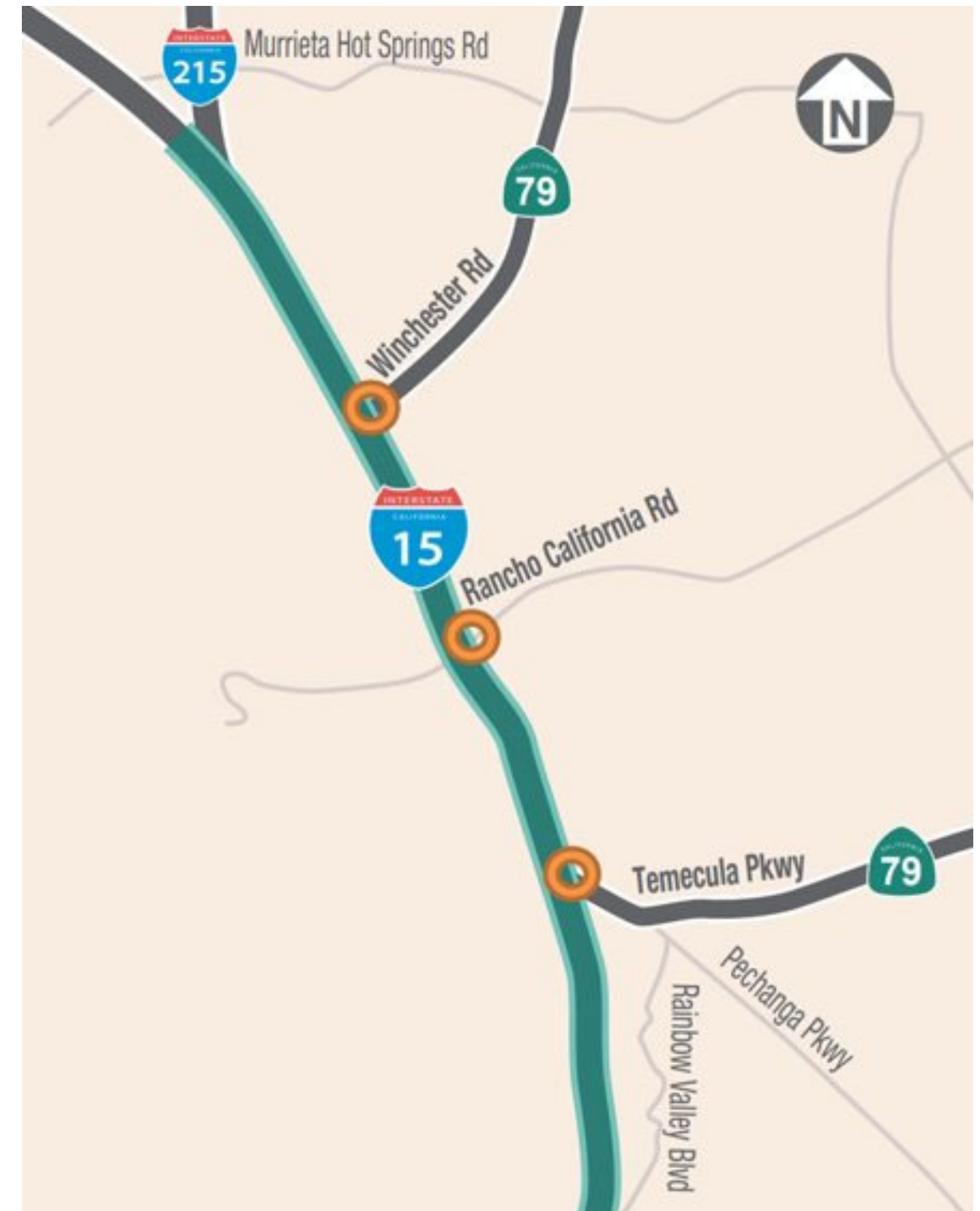
UPCOMING PROJECTS

HIGHWAY/TRAIL/RAIL PROJECTS



I-15 SMART PILOT FREEWAY

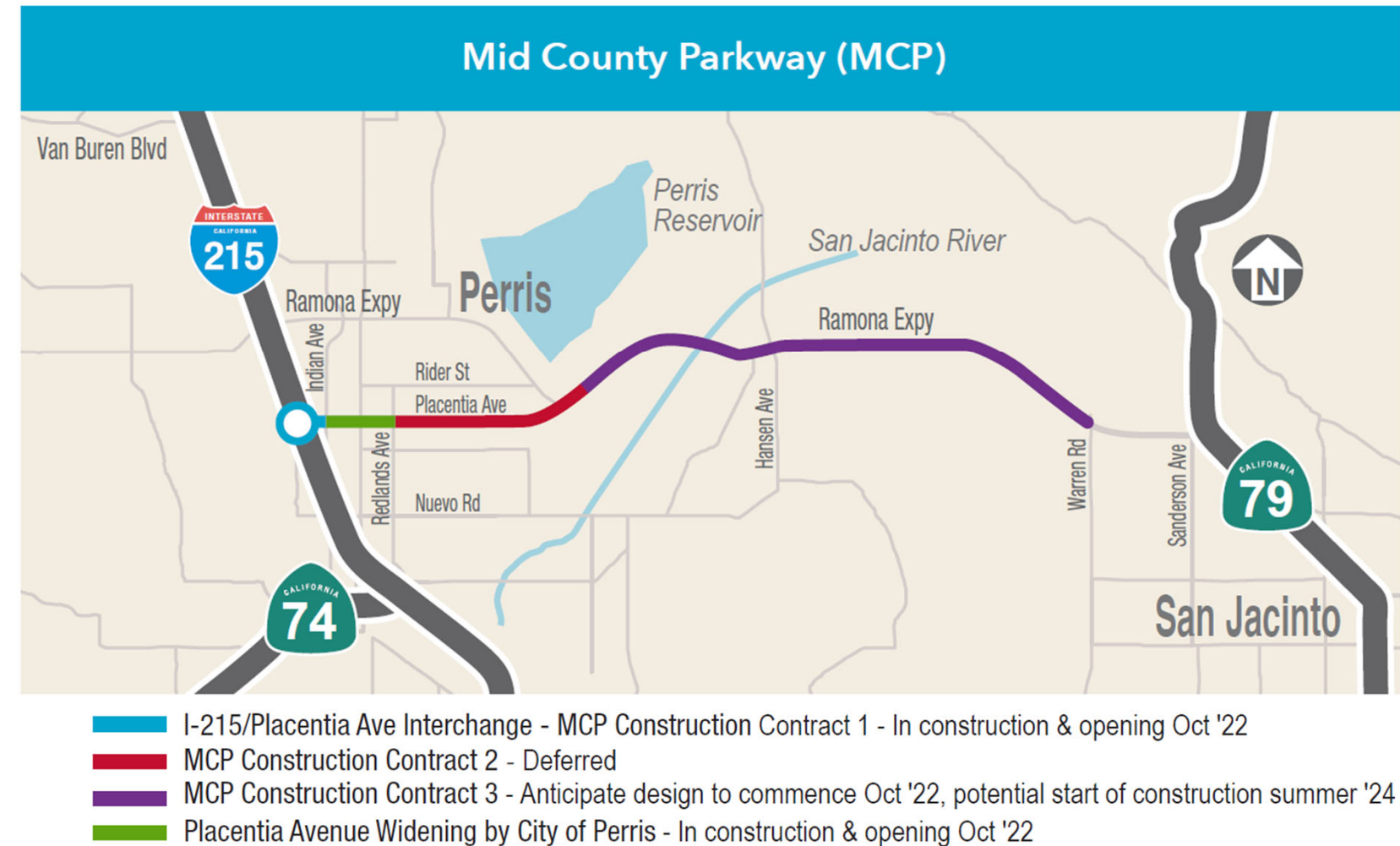
- Project Description:
 - Project Limits: 8-miles of northbound I-15, County Line to 15/215 “Split”
 - Proposed: Installation of Coordinated Adaptive Ramp Metering (CARM) at 3 on-ramps
- Current Phase – Construction Procurement
 - Looking for input from Construction Industry on Scope Packaging
- Project Status
 - Design Status: 100%
 - Estimated Construction Cost: \$12 Million
 - Demonstration Period: 2025 - 2027
 - Upcoming Procurements
 - Construction: 4th Quarter 2023





Mid County Parkway Project Construction Package 3 (MCP 3)

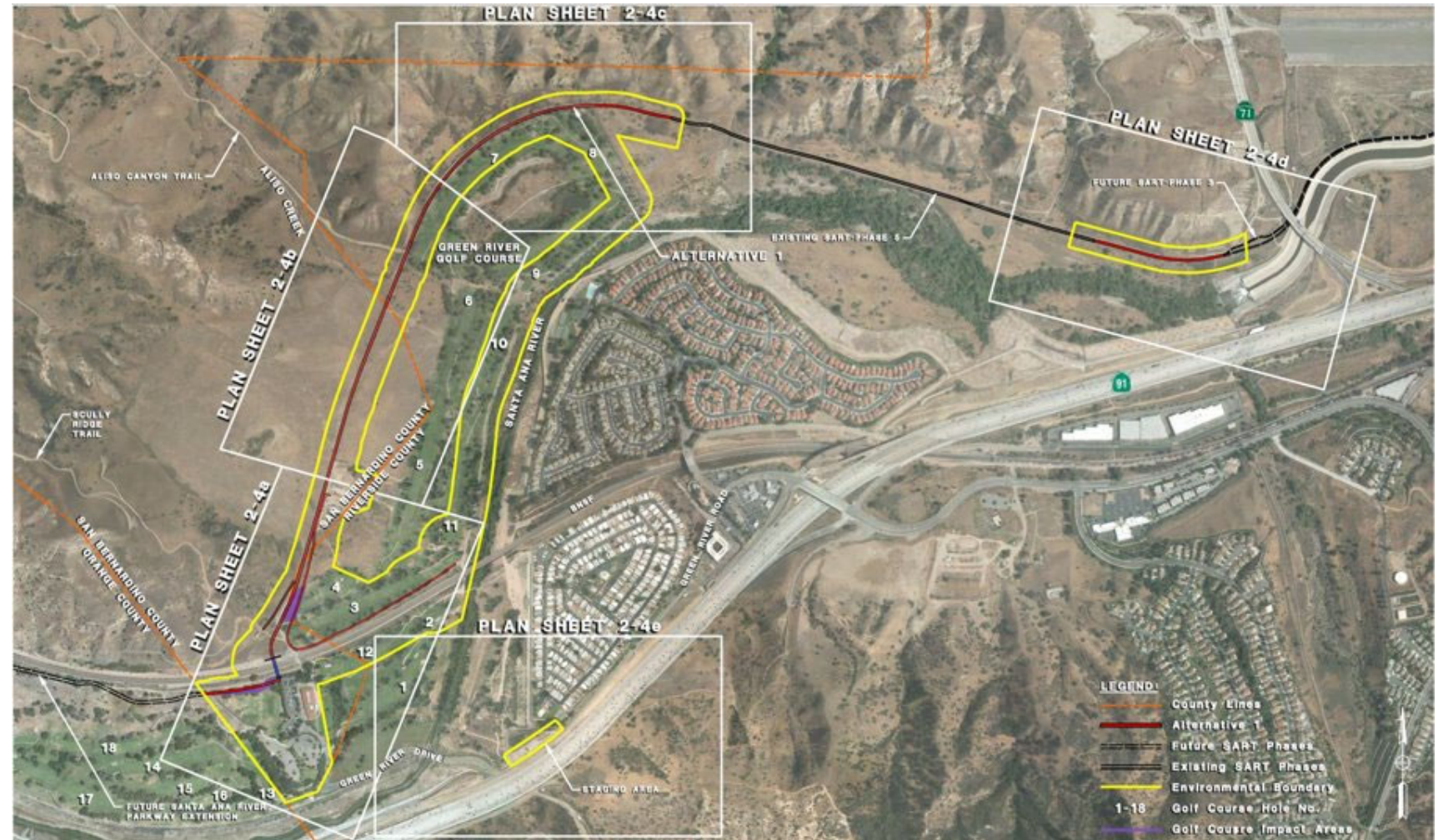
- Project Description:
 - Project Limits: Ramona Expressway (Approx. one mile east of Rider Street to Warren Road)
 - Proposed: Add two new eastbound lanes, restripe existing two lanes to westbound, install raised median with delineators, a new bridge over the San Jacinto River, and traffic signals (8.6 miles)
- Current Phase – Design and Right-of-Way
- Project Status
 - Design Status: 65%
 - Estimated Construction Cost: \$176 Million
 - Construction Completion: 2028
 - Upcoming Procurements
 - RFP for CM: 2nd/3rd Quarter 2024





SANTA ANA RIVER TRAIL 2 – PHASE 6

- Project Description:
 - Project Limits: SR-71 to OC County Line
 - Proposed: Approx. 2 miles of hike/bike/equestrian trail and Concrete Vehicle and Pedestrian Bridge over the BNSF tracks
- Current Phase – Design and Right-of-Way
- Project Status
 - Design Status: 65%
 - Estimated Construction Cost: \$27 Million
 - Construction Completion: 2026
 - Upcoming Procurements
 - RFP for CM: 1st/2nd Quarter 2024
 - Construction: 2nd/3rd Quarter 2024





Coachella Valley Rail Project

- Project Description:
 - Project Limits: Colton to Coachella (77.5 miles)
 - Proposed: Add 3rd Track or sidings, 5 stations, 23 grade crossings improvements.
- Current Phase – Environmental / Preliminary Engineering (TIER II)

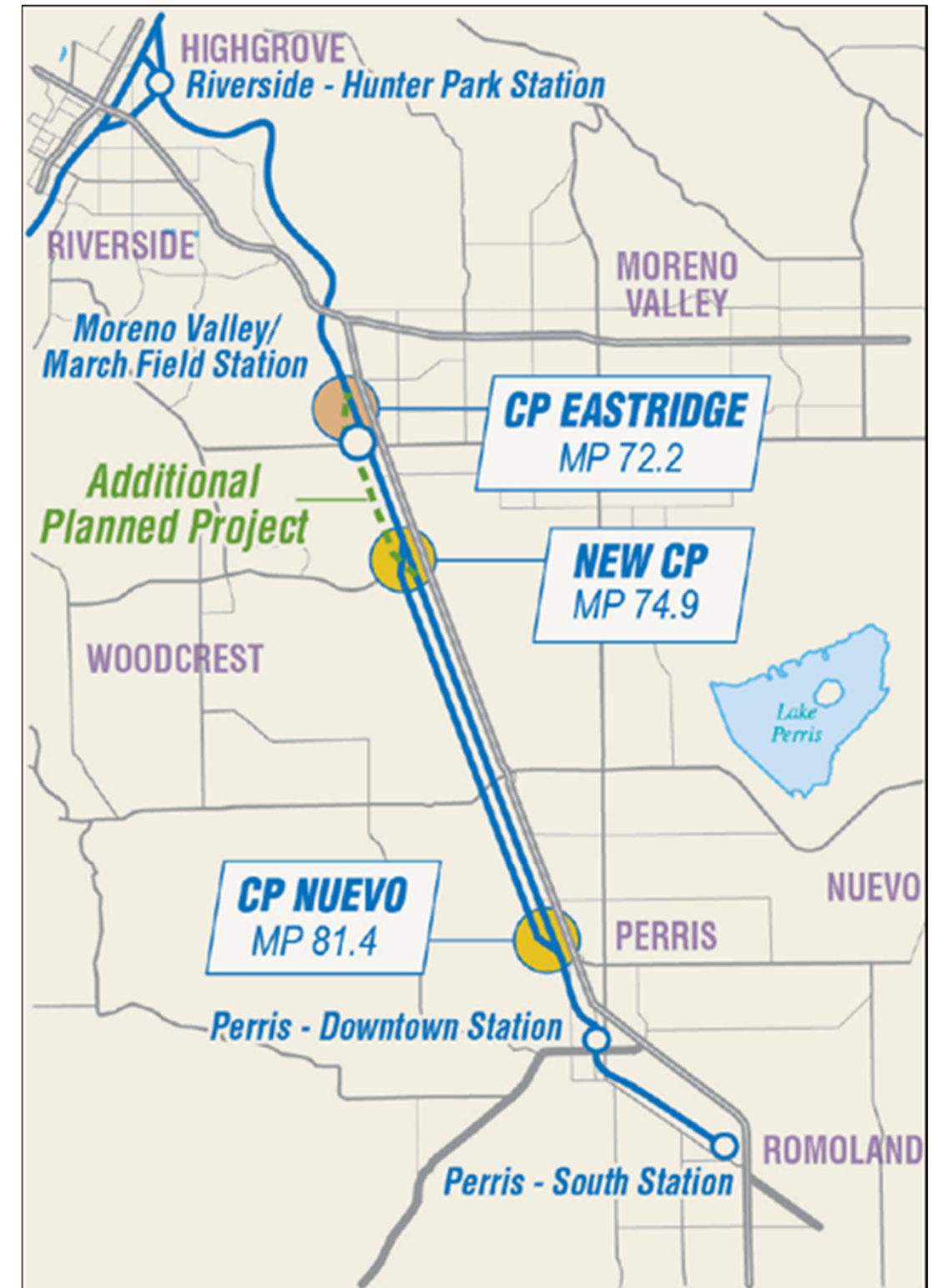
Project Status

- Tier 1 Completed
- Environmental / Preliminary Engineering to commence
- Estimated Construction Cost: \$1+ Billion
- Construction Completion: TBD
- Upcoming Procurements
 - *RFP for Environmental/Preliminary Engineering Consultant: 1st Quarter 2024*

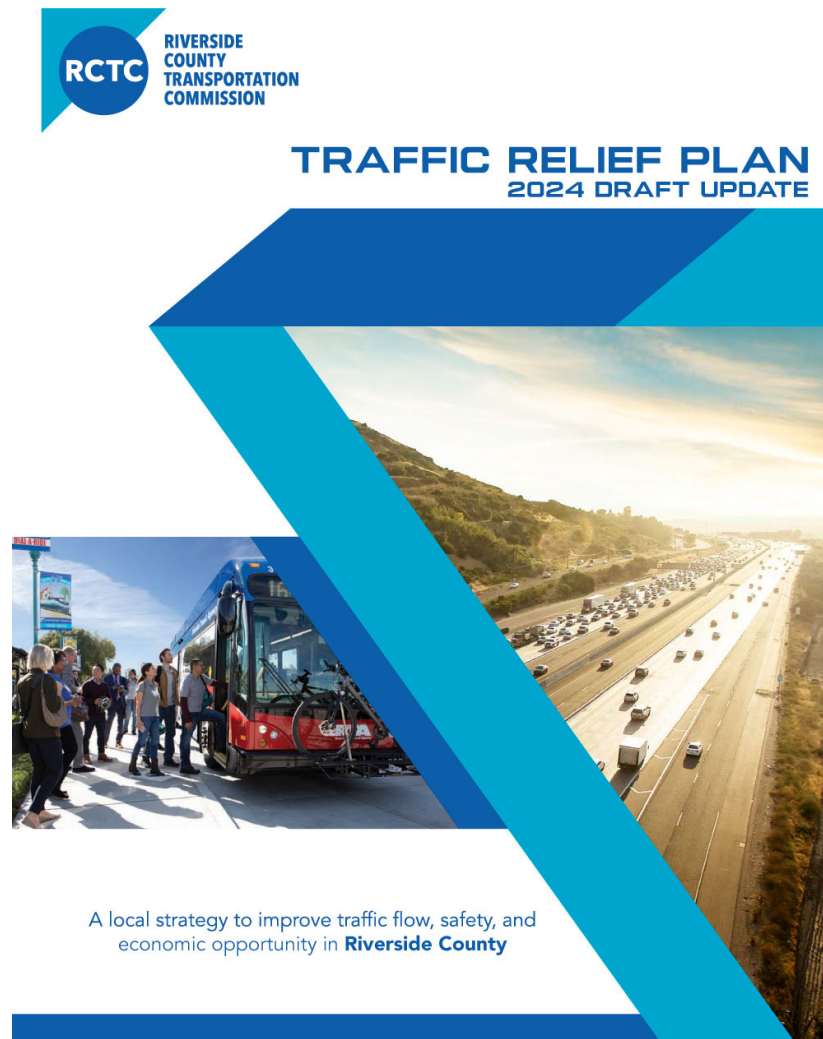


Perris Valley Line Double Track

- **Project Description:**
 - Rehabilitate 6.5 miles of existing freight only track (rail, ties, ballast) and bring to passenger service standards
 - Remove and replace existing switches and turnouts, install new train signal systems, and Metrolink Positive Train Control network
- **Current Phase – Environmental and Design**
- **\$34 million Design and Construction investment**
- **Project Benefit:**
 - Completion of the original scope of the 91/Perris Valley Line (PVL) which was deleted due to funding constraints
 - Increase ridership, enhances service reliability, expands bi-directional, peak period service, works towards 30-min service frequencies
- **Project Status**
 - Design Awarded: Oct 2022
 - Construction Begin: Est. late 2024



Traffic Relief Plan: Looking Forward



Draft 2024 Traffic Relief Plan...

- Identifies County-wide transportation projects and services
 - Developed from public input
 - **Billions of dollars** in transportation investment
 - Updates the 2020 Commission-adopted TRP
- Draft 2024 Traffic Relief Plan: NOT funded**
- Unless voters approve funding

Your Voice. Your Plan.

- **Submit your feedback!**
- **Traffic Relief Plan at TrafficReliefPlan.Org**
- **Digital and grass-roots outreach efforts**



rctc.org



951-787-7141



trafficreliefplan@rctc.org

f X i @theRCTC



QUESTIONS

