



Advancing Border Connectivity

Construction Network

Antoinette Meier, Director of Regional Planning
Maria Rodriguez Molina, Project Development Program Manager

March 7, 2024

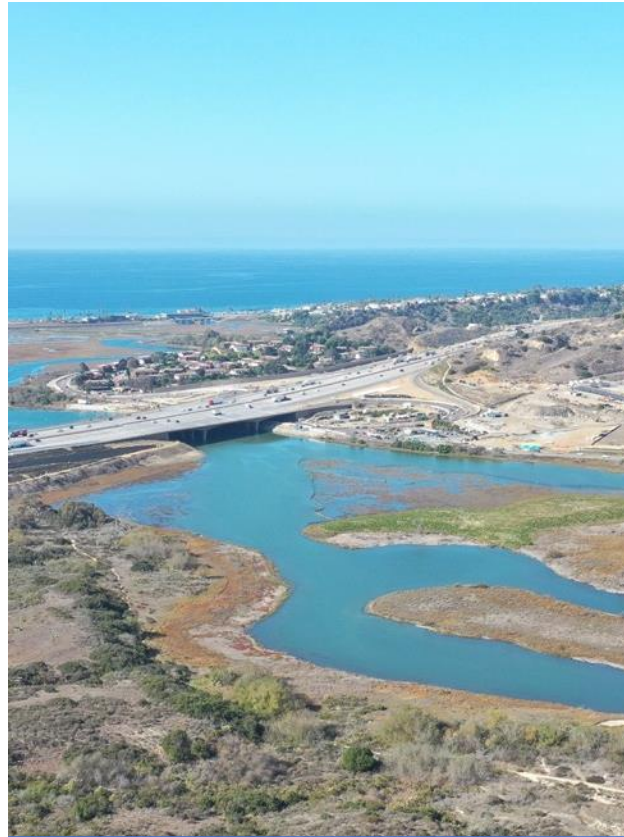
What is SANDAG?



PLAN



BUILD



PRESERVE



PROVIDE

Who do we serve?

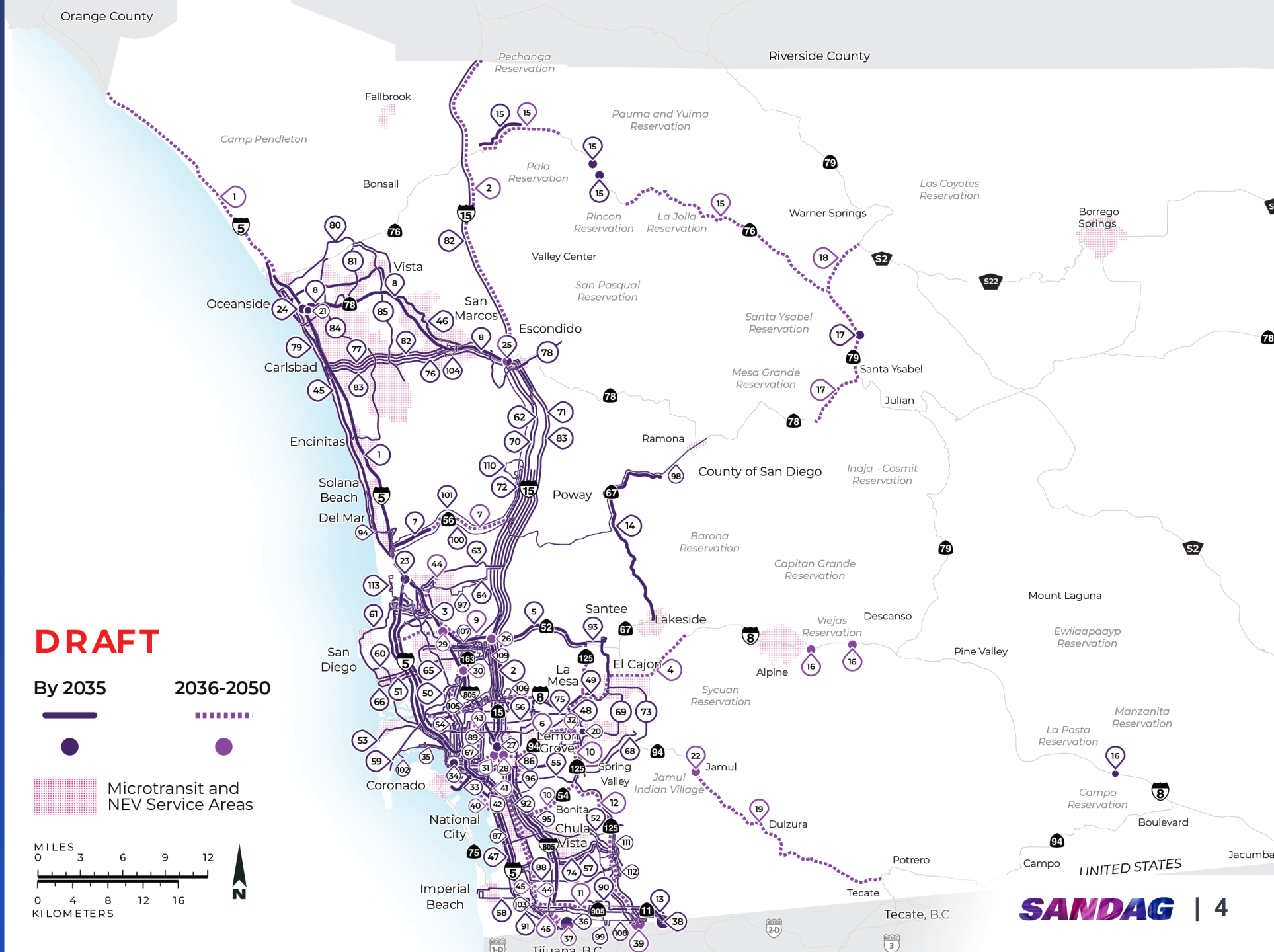


The 2025 Regional Plan Initial Concept

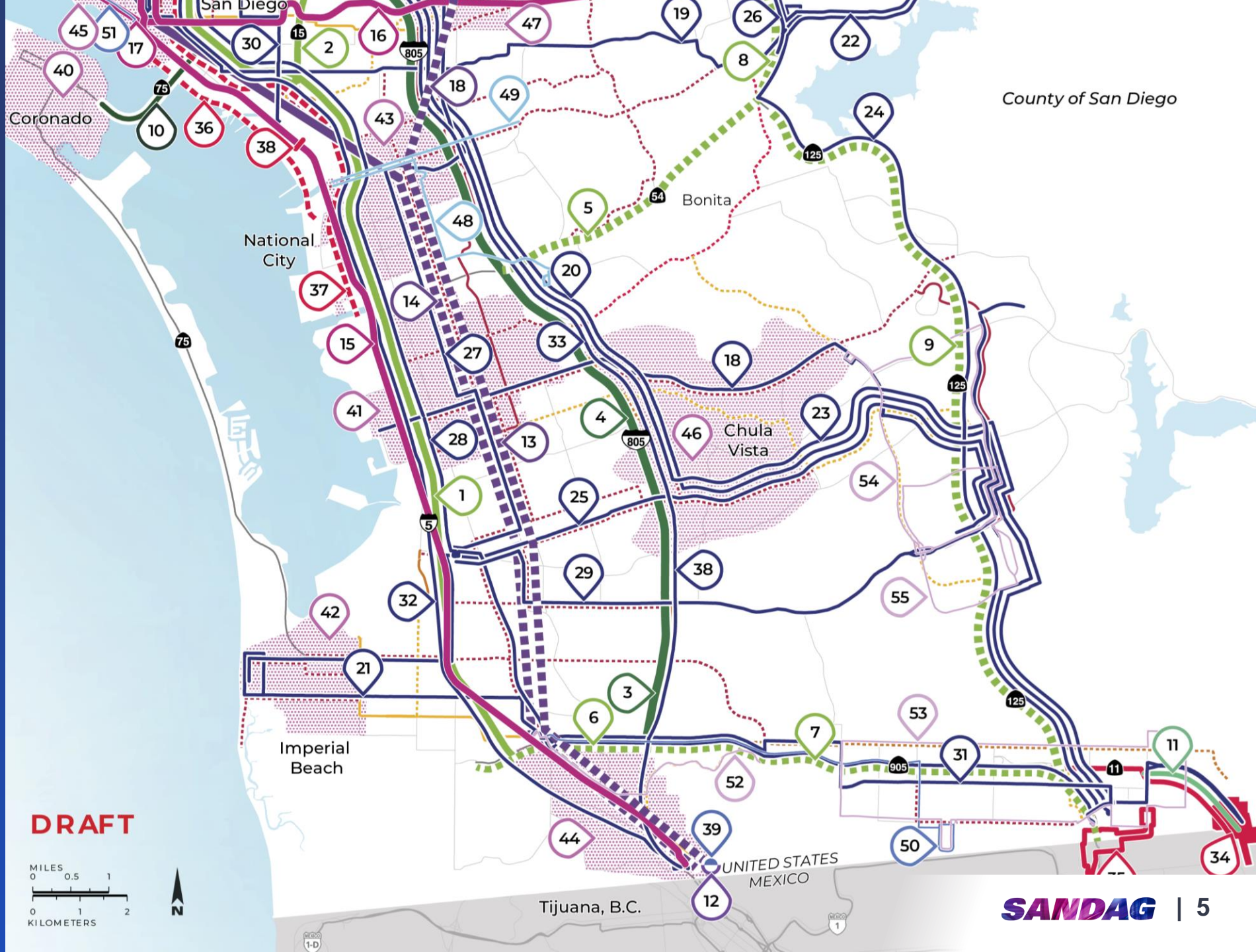
DRAFT

By 2035

2036-2050



The 2025 Regional Plan Initial Concept



Projects Advancing Border Connectivity



Purple and Blue Line



Border to Bayshore
Bikeway



San Ysidro
Mobility Hub

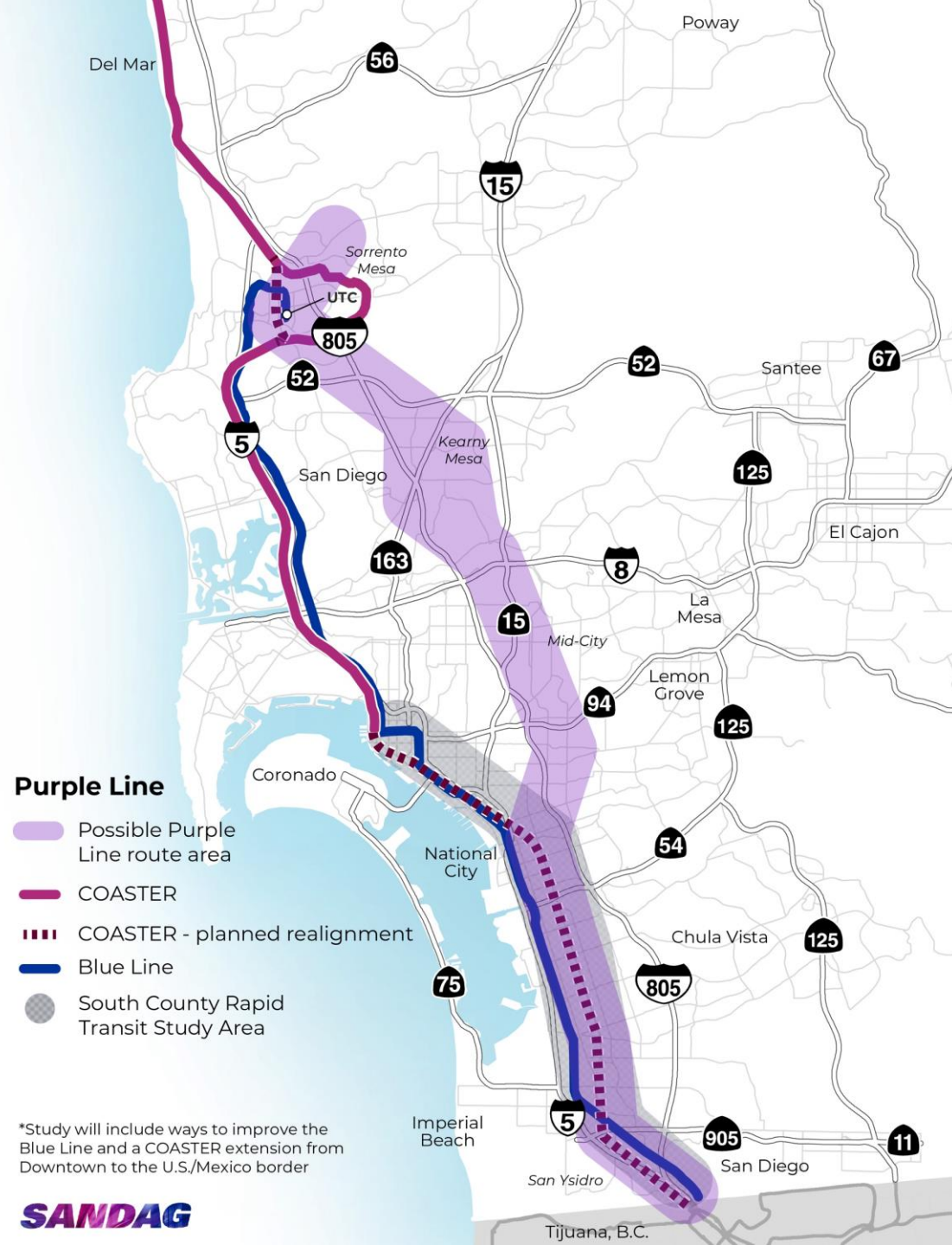


Regional Border
Management System

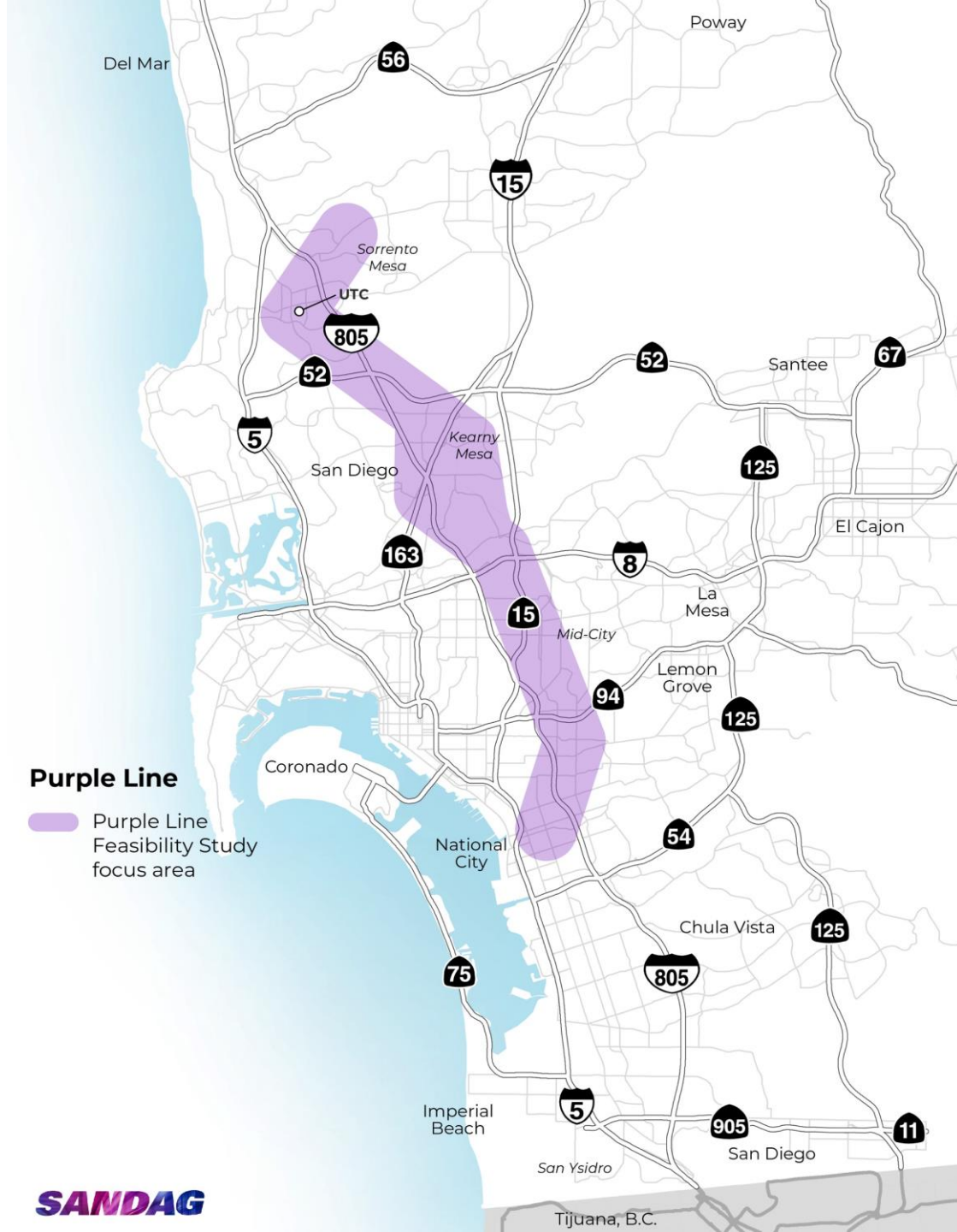


Otay Mesa
East

Purple Line, Blue Line Express and COASTER to the border



Purple Line Feasibility Study



New Bikeway Connections

- 6.7-mile urban bikeway
- Connects San Ysidro Port of Entry to the Bayshore Bikeway
- Provides access to many destinations in between cities of San Diego and Imperial Beach
- \$10.2M ATP Grant

Border to Bayshore Bikeway



San Ysidro Transit Center Improvements

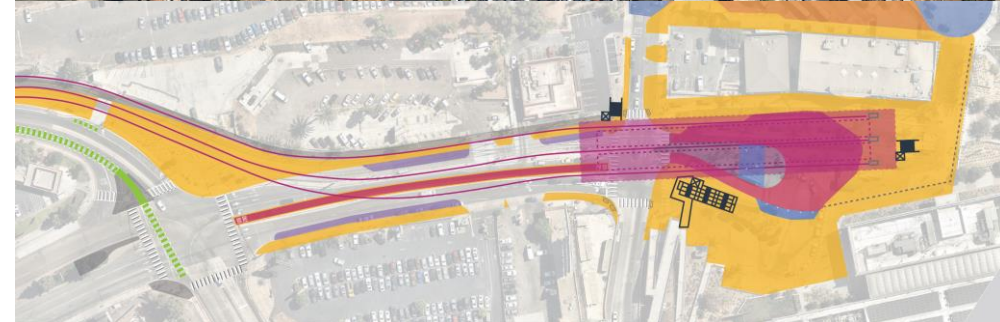
Making improvements to address existing site challenges and get more out of the existing station in the near-term (5-10 years).

- Improving Pedestrian Safety & Connectivity
- Expanding Transit & Mobility Options
- Enhancing Public Plaza & User-Experience



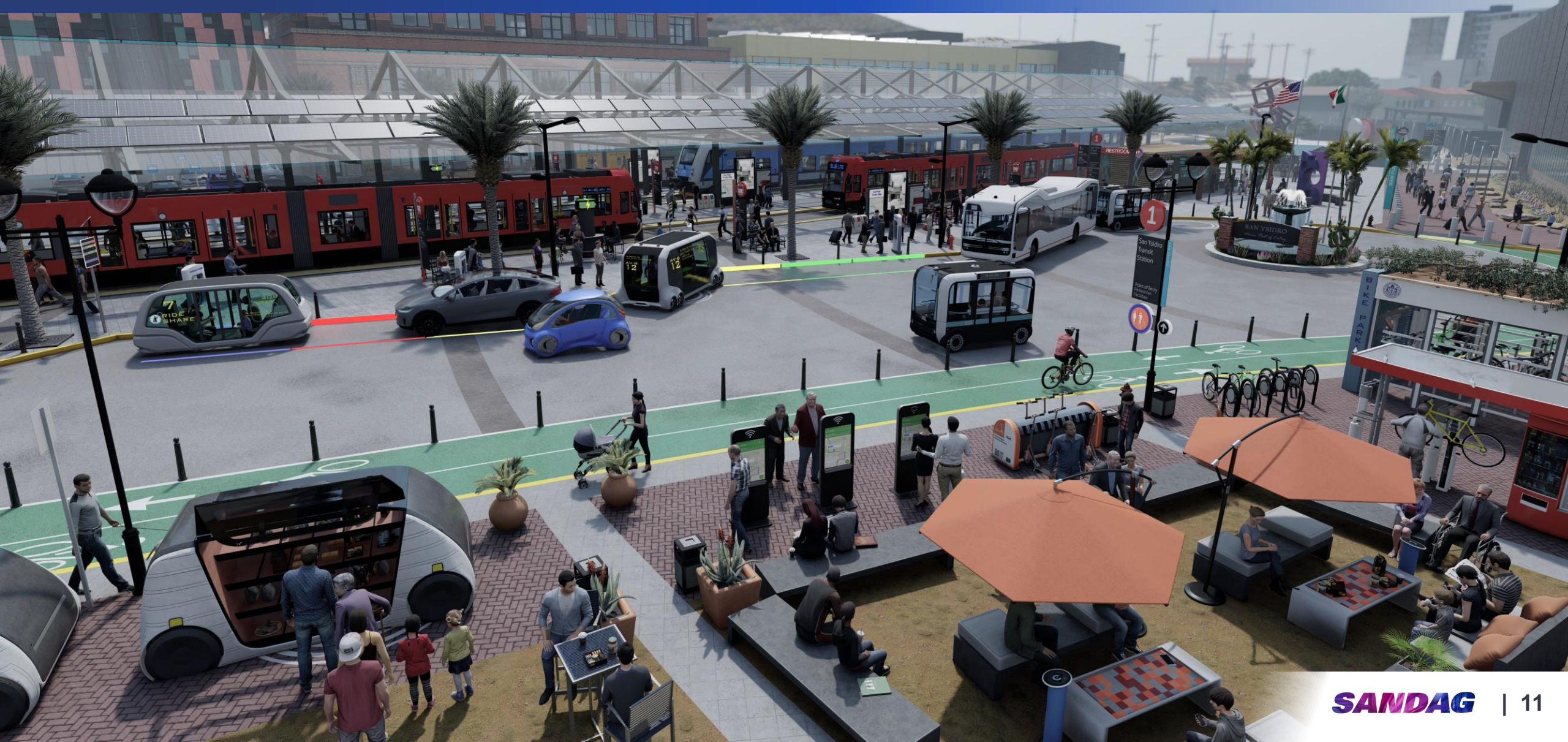
Concept
A

Existing conditions

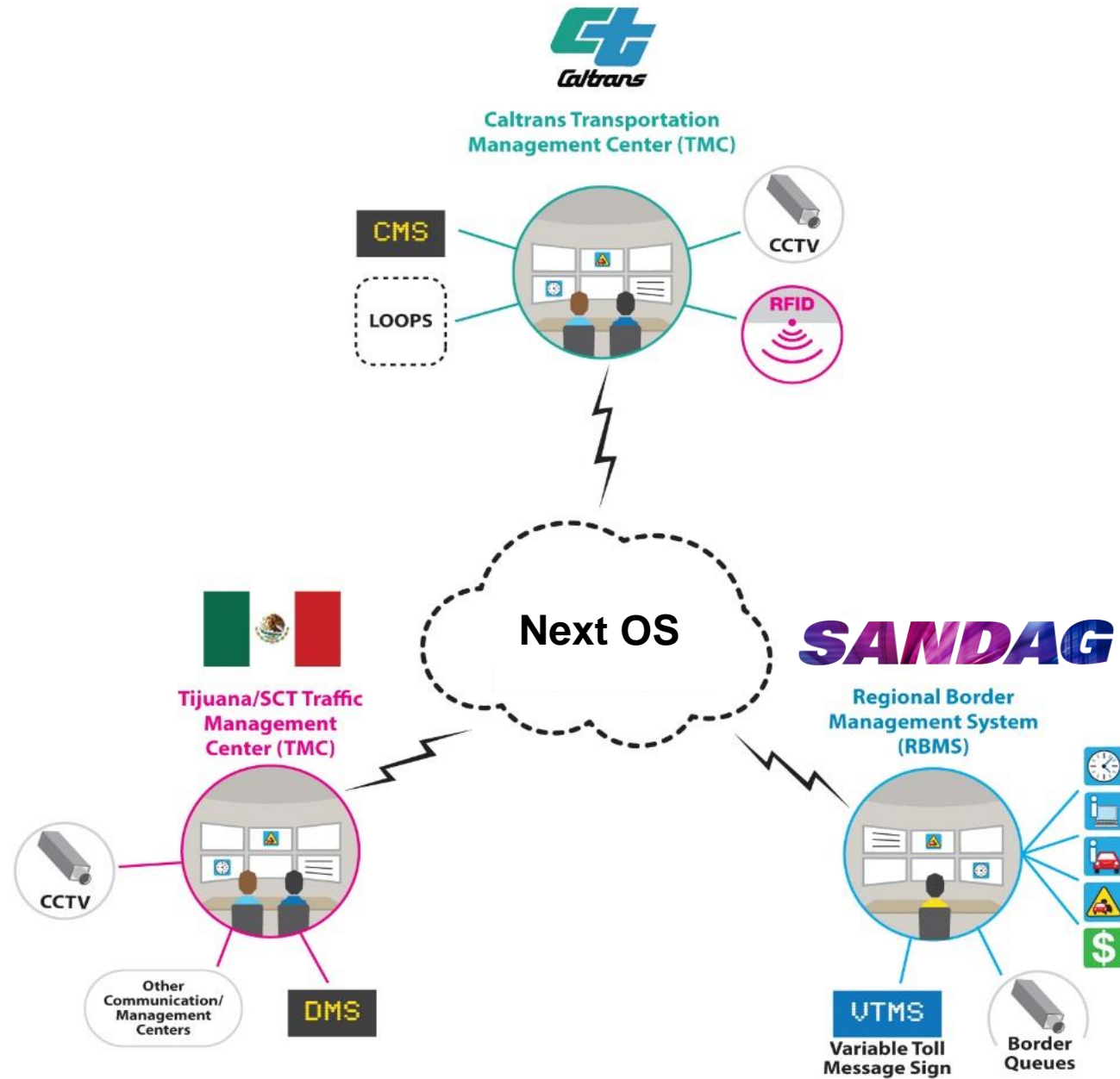


Concept
C

San Ysidro Mobility Hub



Regional Border Management System





SR 11 / OTAY MESA EAST

PORT OF ENTRY

Maria Rodriguez Molina
Project Development Program Manager

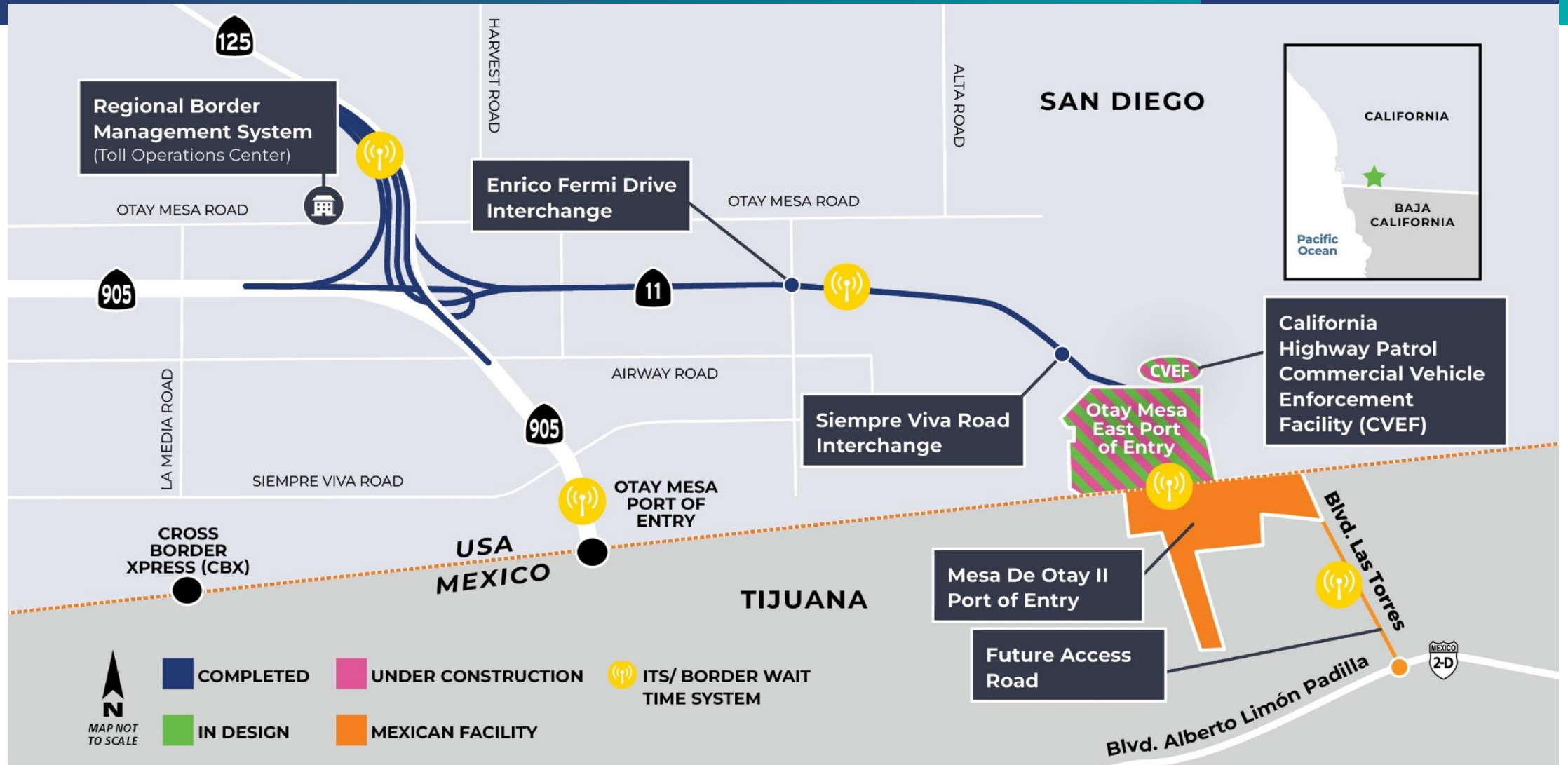
Construction Network
March 07, 2024

Agenda

- Project Overview
- Project Benefits
- Agreements
- Schedule
- Design Update
- Questions & Discussion

Project Overview

Corridor Cost: \$1.2B



Project Benefits and Innovative Features



With a goal of **net zero emissions by 2035**, the new port of entry will be clean, green, and smart. The facility aims to produce its own energy and recycle its own water and waste to reduce its carbon footprint and maximize operational efficiencies.



An **advanced traveler information system** will inform border crossers about toll rates, border wait times, special lane conditions, and incidents at all regional land ports of entry.



An **integrated operations system** will intelligently link traffic operations. This seamless system will be instrumental in meeting the **20-minute average wait time goal**.



REDUCE GREENHOUSE GAS EMISSIONS



REDUCE WAIT TIMES



FUEL ECONOMIC GROWTH



GOAL TO REACH NET ZERO FOOTPRINT BY 2025



STRENGTHEN BORDER SECURITY AND RESILIENCY



ENHANCE REGIONAL MOBILITY



BOLSTER BINATIONAL TRADE



ZEV INFRASTRUCTURE AND SERVICES

Binational Agreements

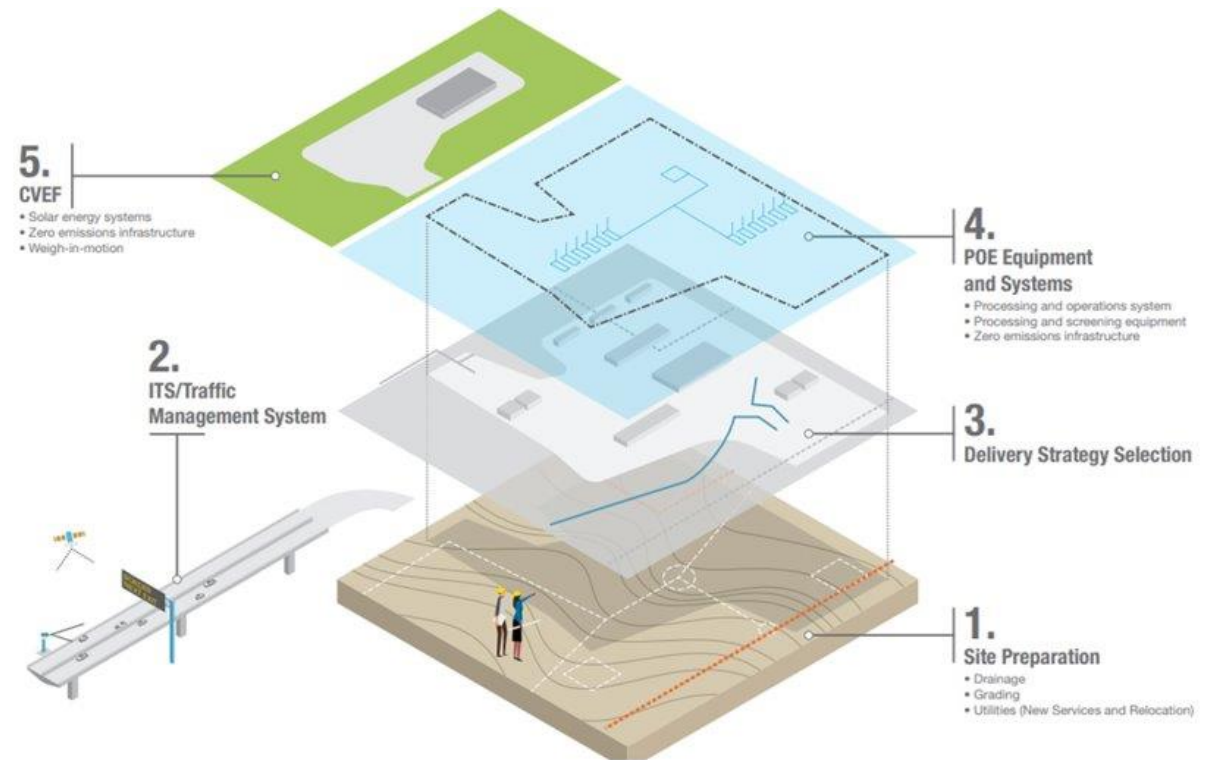
ID	TASK NAME	START	FINISH	Underway	2023			2024												
					OCT	NOV	DEC	JAN	FEB	MAR	APR	MAY	JUN	JUL	AUG	SEP	OCT	NOV	DEC	
1	Binational Team Approval for Tolling Operations and ITS	10/10/23	-		◆															
2	Modifications to Revenue Share Agreement	10/11/23	12/31/23																	
3	ITS Operations & Maintenance Agreement	11/30/23	5/30/24																	
4	Custodial Agreement with NADBANK	2/1/23	3/31/24																	
5	Toll Governance Agreement	10/3/22	5/30/24																	

US POE Delivery Schedule

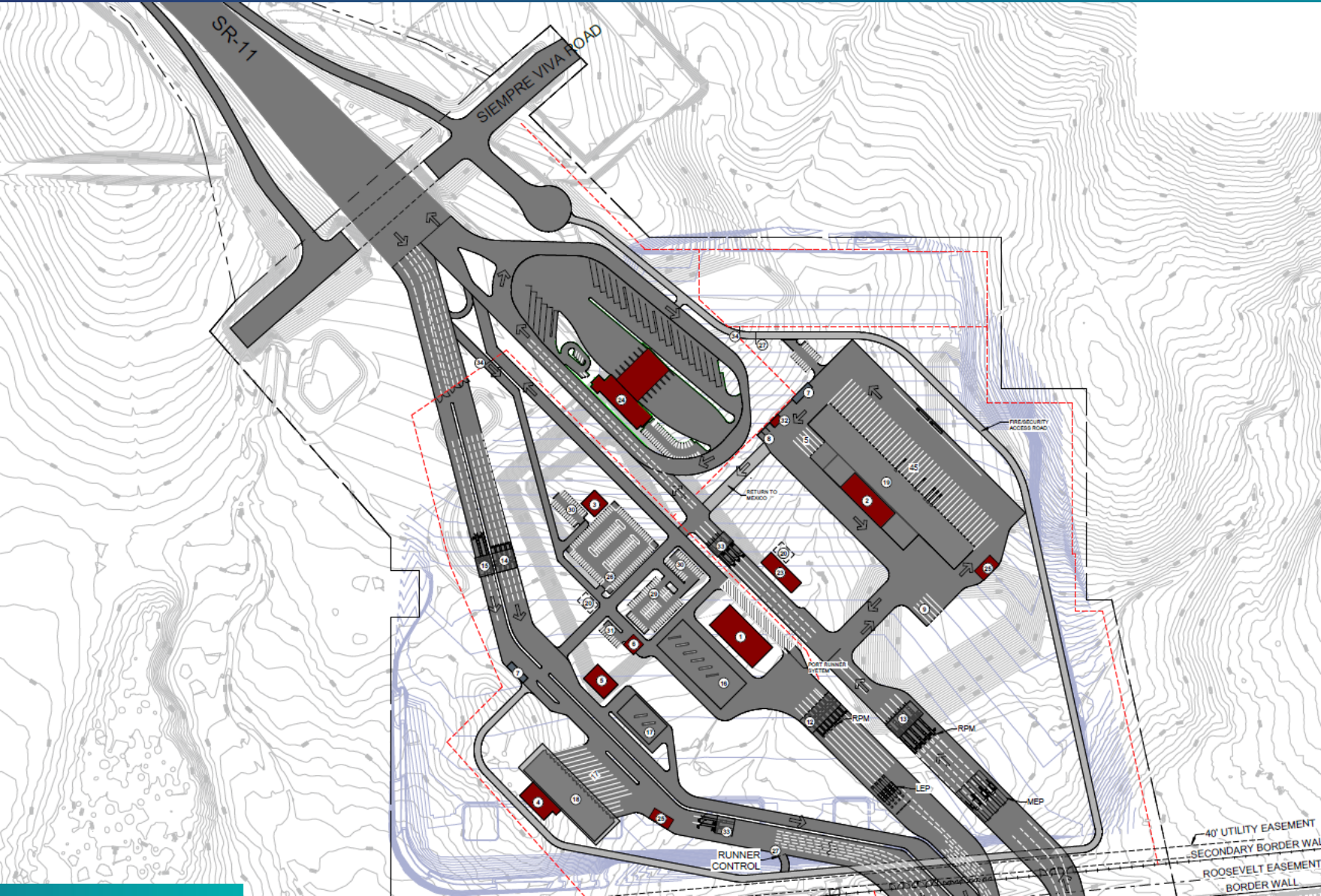
ID	TASK NAME	START	FINISH	2023			2024												2025	2026							
				OCT	NOV	DEC	JAN	FEB	MAR	APR	MAY	JUN	JUL	AUG	SEP	OCT	NOV	DEC									
1	GSA/CBP/Sponsors Agreement	05/20/22	03/30/24																								
2	CM/GC Procurement	04/01/23	11/30/24																								
3	Begin Construction of CVEF/ITS/POE	12/10/24	-																								
4	Open To Traffic	08/31/26	-																								

Scope Overview

- Design of:
 - Brand new 21st Century Port of Entry
 - Commercial Vehicle Enforcement Facility
 - Intelligent Transportation System with Tolling Component
- Progress:
 - Update of Master Plan
 - 15% Design (Conceptual Design) of Ultimate Facility and Initial Build Out
 - *30% Design (Schematic Design) of Initial Build Out – Ongoing*

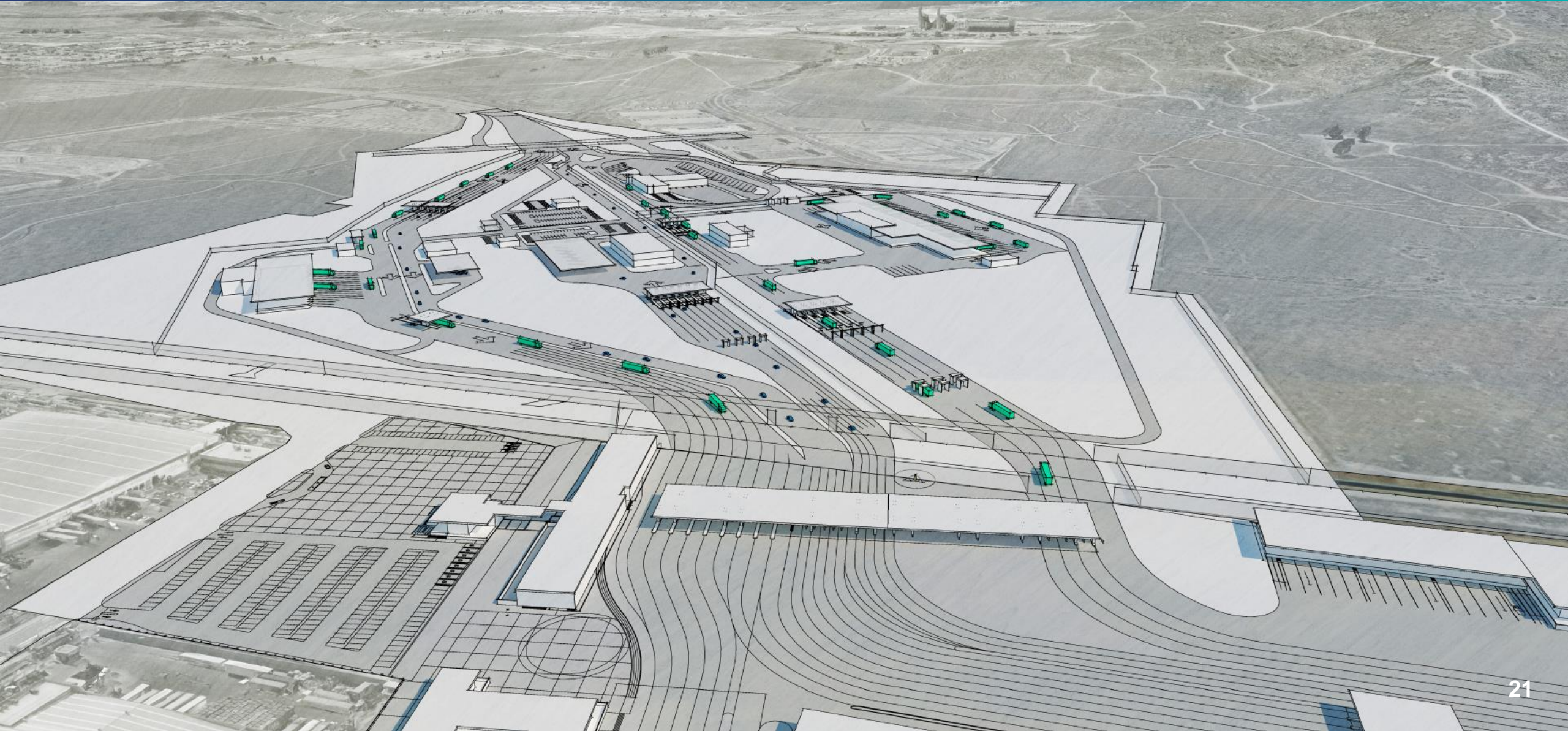


Initial Site Build-Out

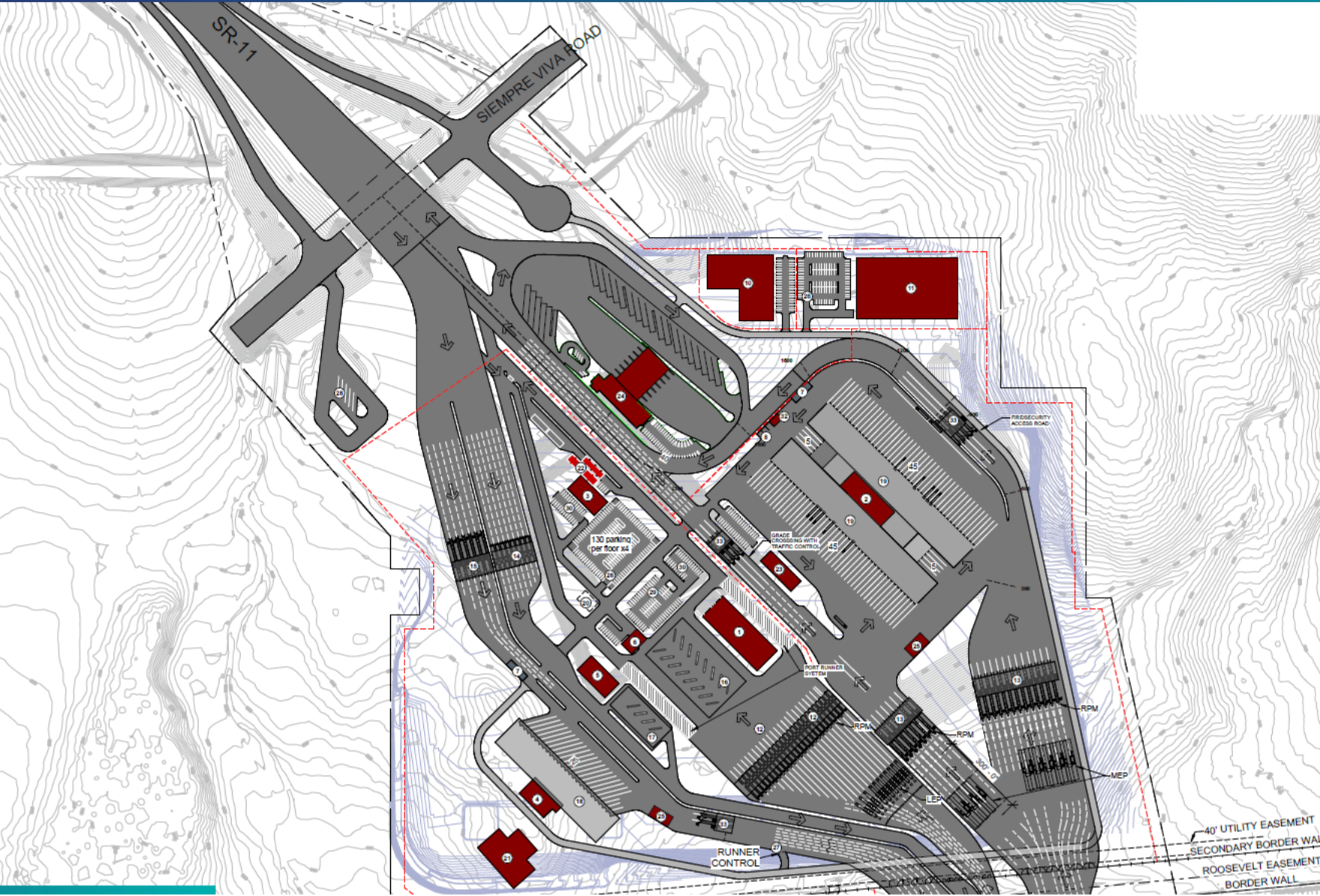


- Day One Build Out
- 7 NB Passenger Vehicle Lanes
- 5 NB Commercial Vehicle Lanes

Initial Site Build-Out



Ultimate Facility Layout

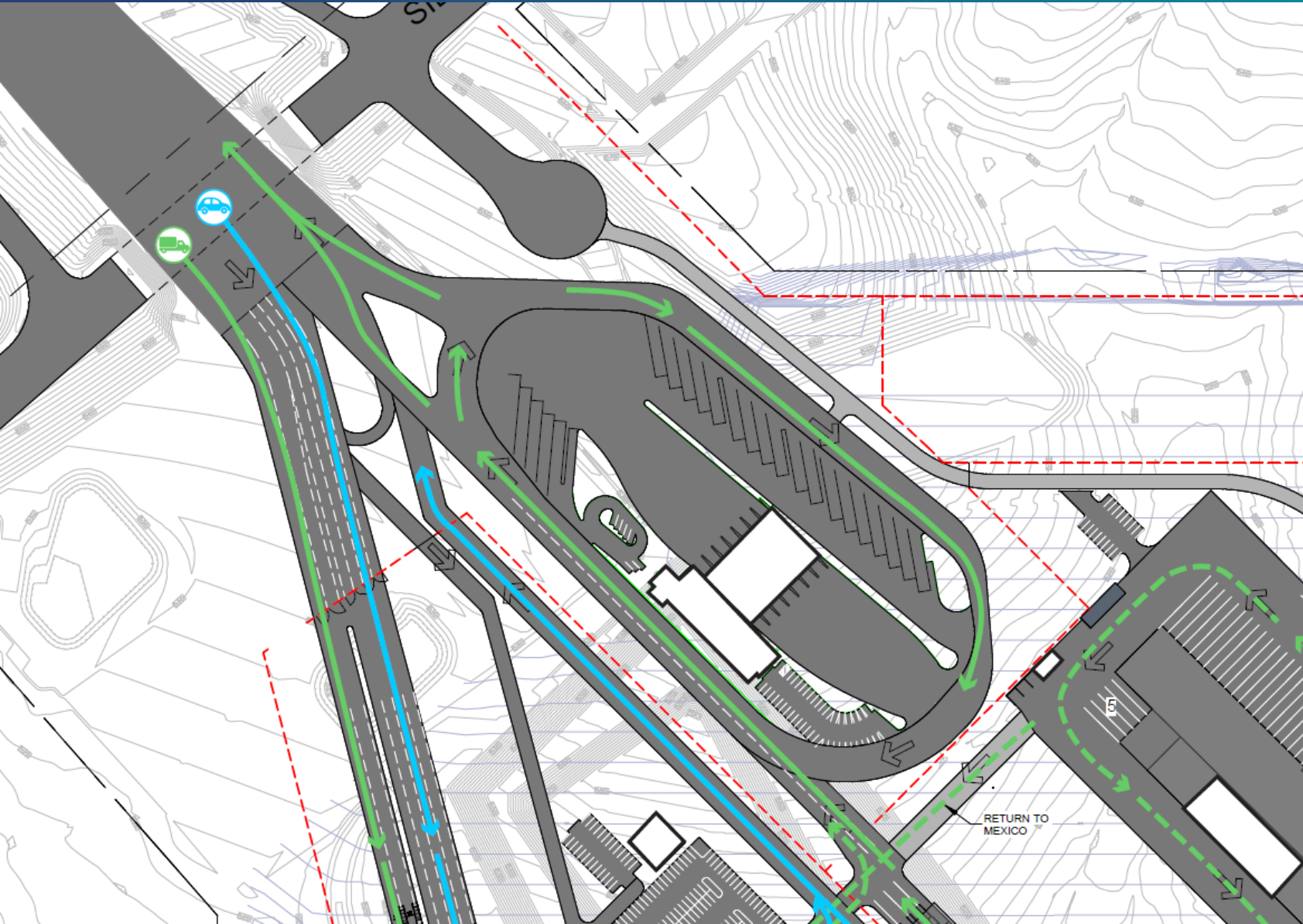


- Planning for Future Expansion
- 25 NB Passenger Vehicle Lanes
- 20 NB Commercial Vehicle Lanes

Ultimate Facility Layout



Commercial Vehicle Enforcement Facility



- State Facility
- Owned by Caltrans
- Operated by CHP
- Space for FMCSA

Stay connected with us

-  Sign up for emails
[SANDAG.org](https://www.sandag.org)
-  Follow us on social media
[@SANDAGregion](https://twitter.com/SANDAGregion) [@SANDAG](https://twitter.com/SANDAG)
-  Send us an email
pio@sandag.org

SANDAG