

Presented to:
Construction Network

John Wayne Airport

Presented by:
Komal Kumar
Interim Assistant Airport Director

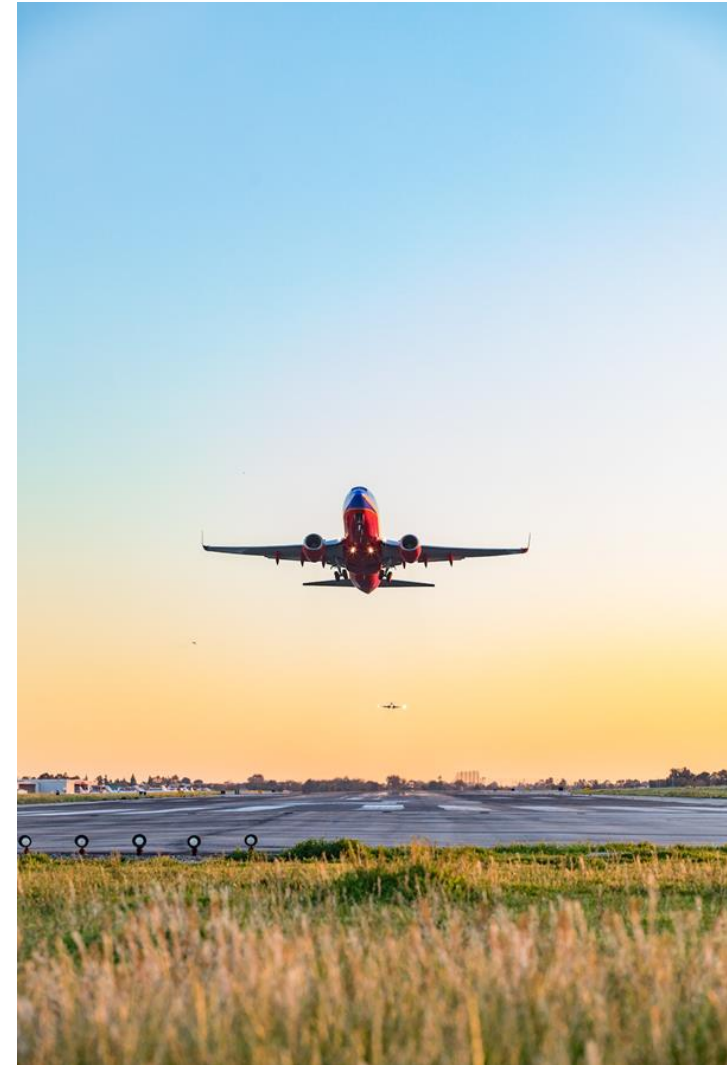
March 12, 2024



JOHN WAYNE AIRPORT
ORANGE COUNTY

Airport Overview

- Owned & operated by the County of Orange
- 510.15 acres
- Bordered by Costa Mesa, Irvine & Newport Beach
- Thomas F. Riley Terminal
 - 20 gates (loading bridge)
 - 2 commuter terminals
- Two runways
 - 5,700 feet (commercial aviation)
 - 2,887 feet (general aviation)



2023 Overview

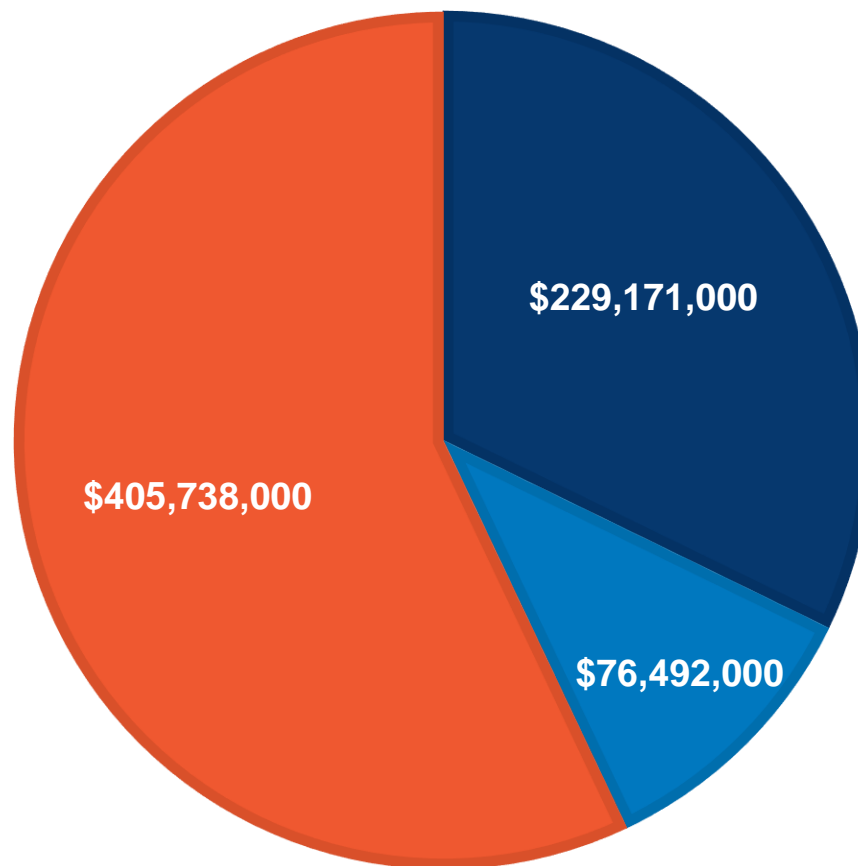
- Total Passengers: 11.7 M
 - 11.8 M Cap
 - Potential increase in 2026 to 12.5 M
 - Settlement Agreement in place since 1985
- Total Operations: 273,175
 - 40% Commercial
 - 60% General Aviation
- Top Five Destinations:
 - Las Vegas
 - Phoenix
 - Denver
 - Seattle
 - Dallas



Capital Improvement Program

CIP Cost

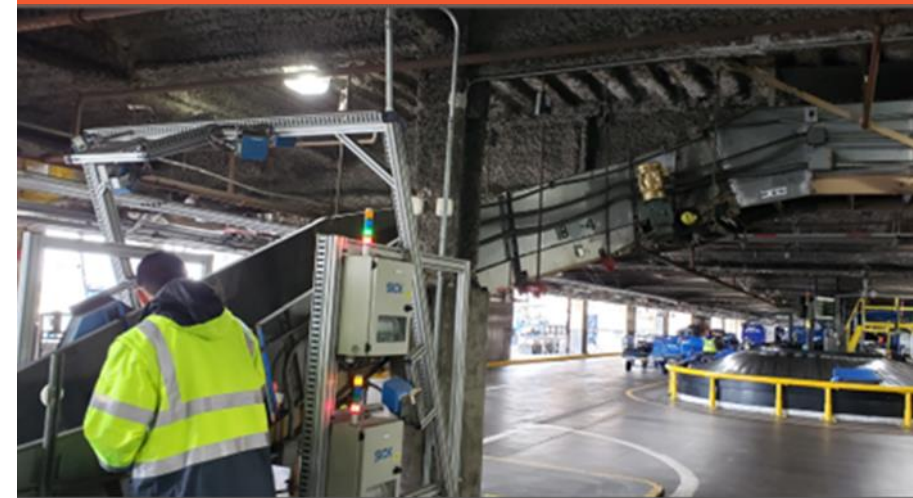
**Total
\$711,401,000**



- Est. Future FY Project Total
- Qualified Future Projects Total
- Planned 3-Year Project Total

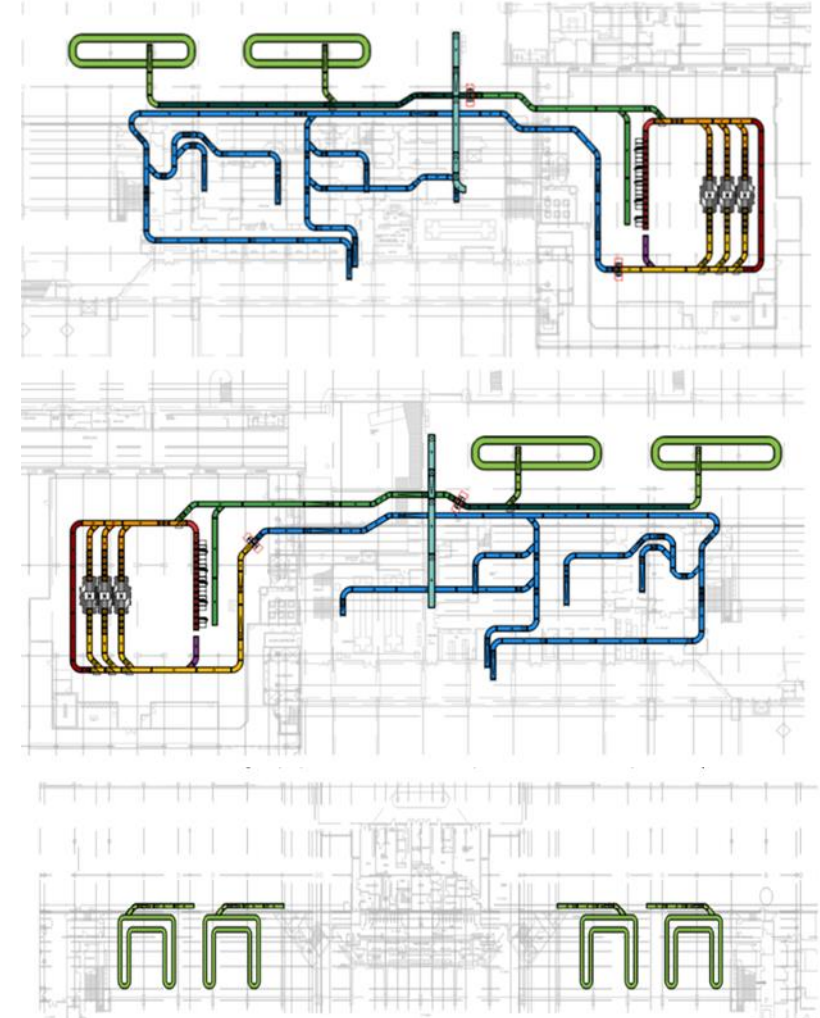
Infrastructure Improvements

- Major Capital Improvement Projects Include:
 - New Baggage Handling System
 - Airfield Perimeter Security Improvements
 - Airport Power Generation and Distribution Upgrades
 - Facility Accessibility Improvements
 - Vertical Conveyor System Improvements (Escalator and Elevator Replacement)



Terminals A and B BHS Improvements

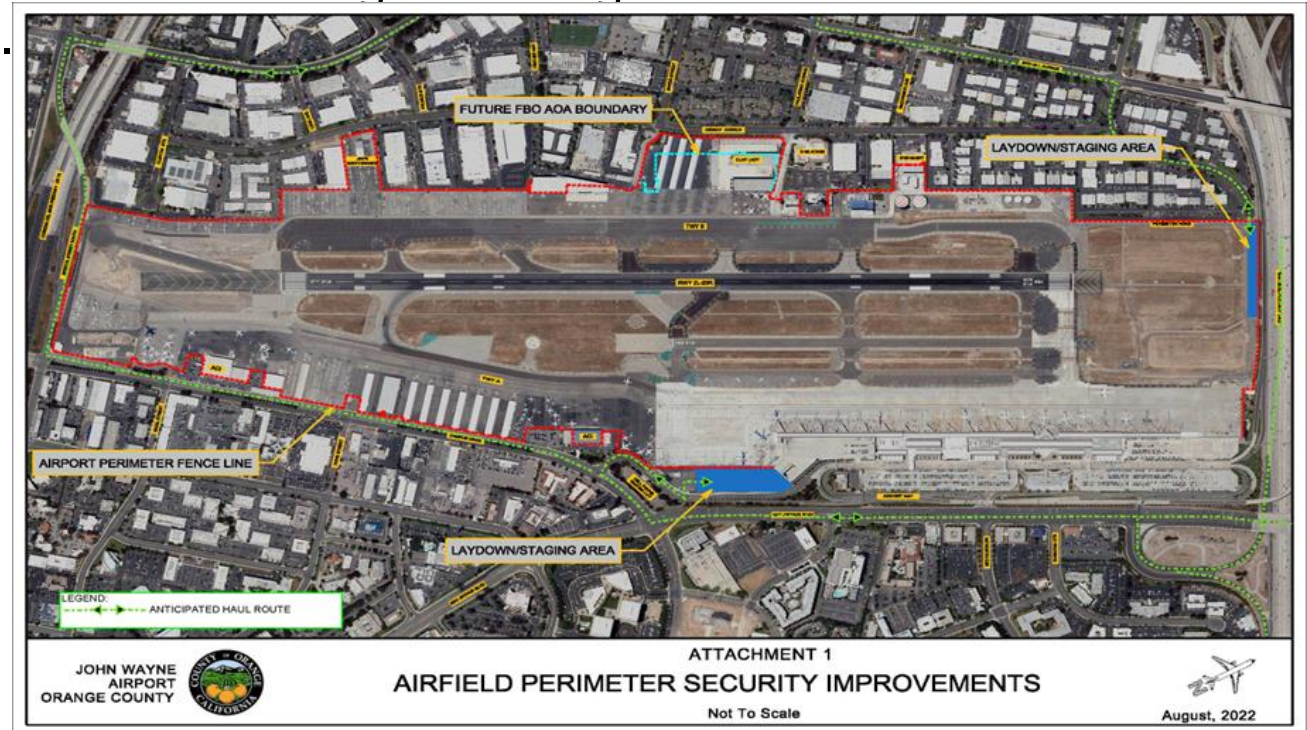
- The outbound baggage systems will be replaced.
- All existing conveyors will either be refurbished (i.e., drives, rollers, belting, and bearings replaced) or replaced with new conveyors.
- Each terminal will have one screening pod (CBIS) containing three EDS machines and one TSA inspection area (CBRA).
- The inbound baggage systems will be replaced and expanded.
- The loading belts will be relocated closer to the terminal.
- New 190 linear foot flat-plate claim devices will replace the existing 150 linear foot slope-plate claim devices.
- Design– FY 25/26
- Construction – FY 26/27



Airfield Perimeter Security Improvements

This project will replace the existing airfield perimeter fence with a taller, non-climbable system, increase lighting, add motion detectors, install an intrusion detection system, and add CCTV cameras. The project also includes the replacement of three existing vehicle perimeter gates and one emergency gate with enhanced gates and guard booths integrated with the access control system.

- A&E – FY 24/25
- Construction – FY 25/26



Airport Power Generation and Distribution Upgrades

The overall program, including all phases, will improve power system reliability and resiliency, mitigate electrical interruptions, reduce outages and dependence on Southern California Edison (SCE), develop prioritized work packages (PDP), and develop an asset database to assist management, maintenance, and future capital needs.

- Phase 1 - Electrical Distribution Modernization consists of re-feeding 12 kV distribution, replacement of the medium voltage switchgear and substations and upgrade the emergency system.
- Phase 2 – Central Utility Plant (CUP) co-generation plant system improvements, including SCADA, blackstart, battery storage, load shedding capabilities, and water treatment system upgrades.
- Phase 3 – Replacement of aging electrical equipment in the terminal complex and at other airport facilities.
- Phase I – In Progress
- Phase II & III
 - Design - FY 25-27
 - Construction - FY 27-29



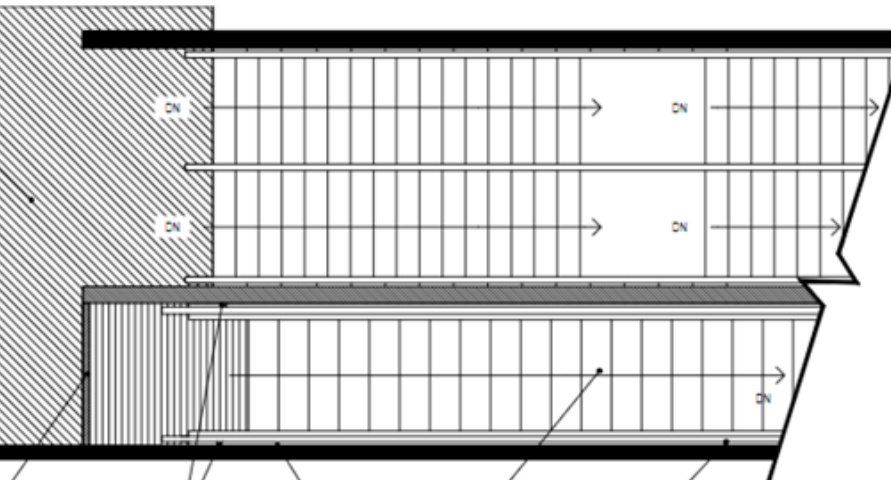
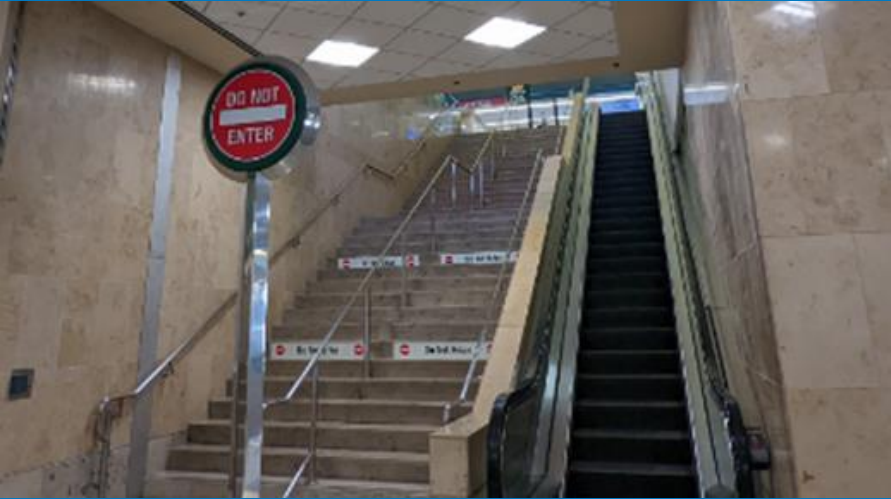
Facility Accessibility Improvements

JWA conducted a detailed accessibility assessment and identified improvements needed to comply with Americans with Disabilities Act (ADA) requirements including, but are not limited to, the path of travels/pavement reconstruction; signage, handrail, and guardrail improvements; elimination of protruding objects and installation of required detection systems; restroom accessibility improvements; and various other adjustments and/or replacements for fixtures around the Airport.

- Phase I – In Progress



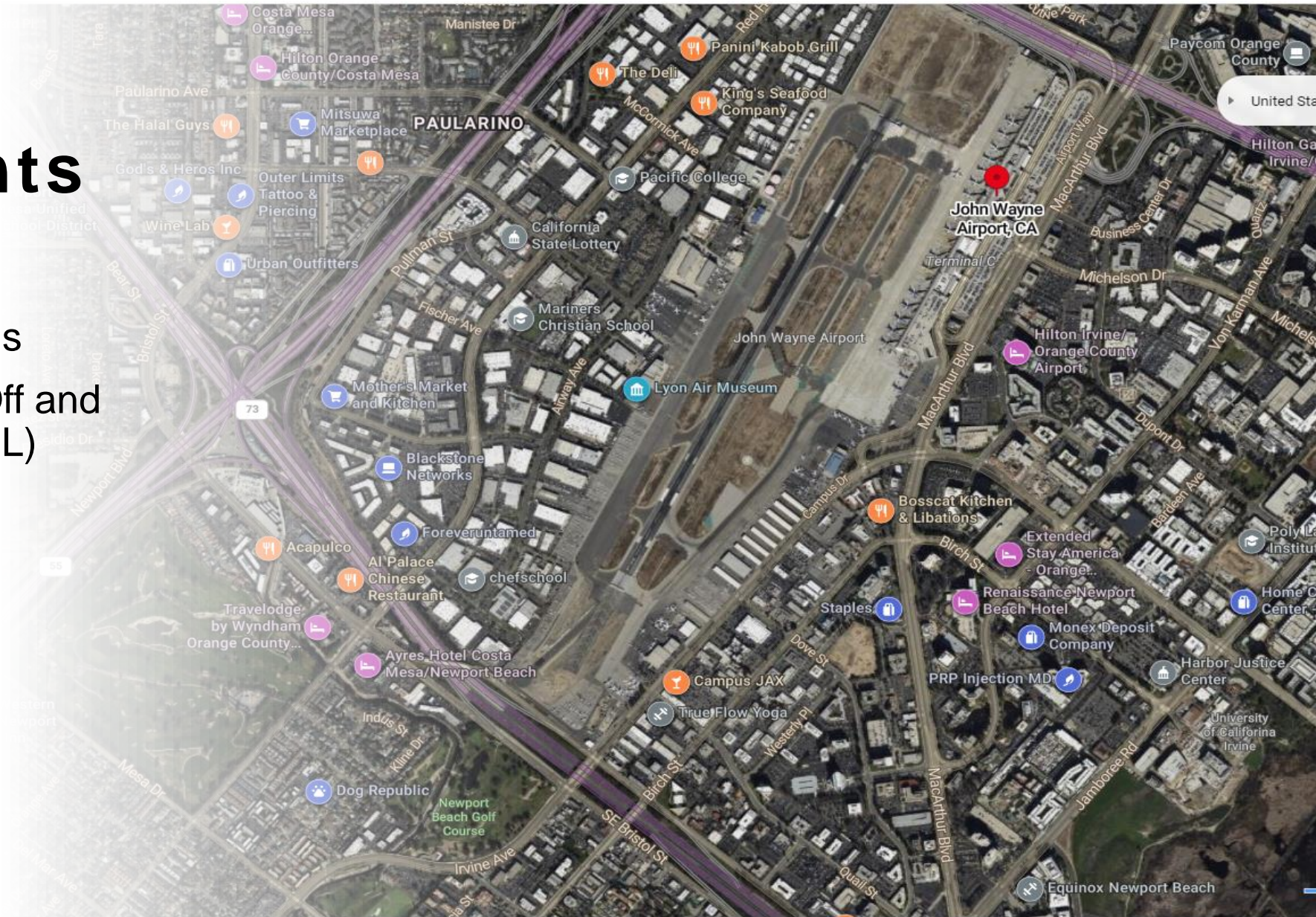
Vertical Conveyor System Improvements (Escalator and Elevator Replacement)



- Replace and/or rehabilitate all existing elevators and escalators at John Wayne Airport (JWA). Escalators and elevators in Terminals A and B were installed in 1990 and were installed in 2011 in Terminal C. There are 14 elevators in Terminals A, B, and C combined. There are 28 elevators and nine escalators within the Airport complex that will be replaced and/or rehabilitated.
- The project will be performed in phases to reduce impacts on traveling passengers.
- Phase I - In Progress
- Phase II, III & IV
- Design – FY 26/27
- Construction – FY 27/28 – 28/29

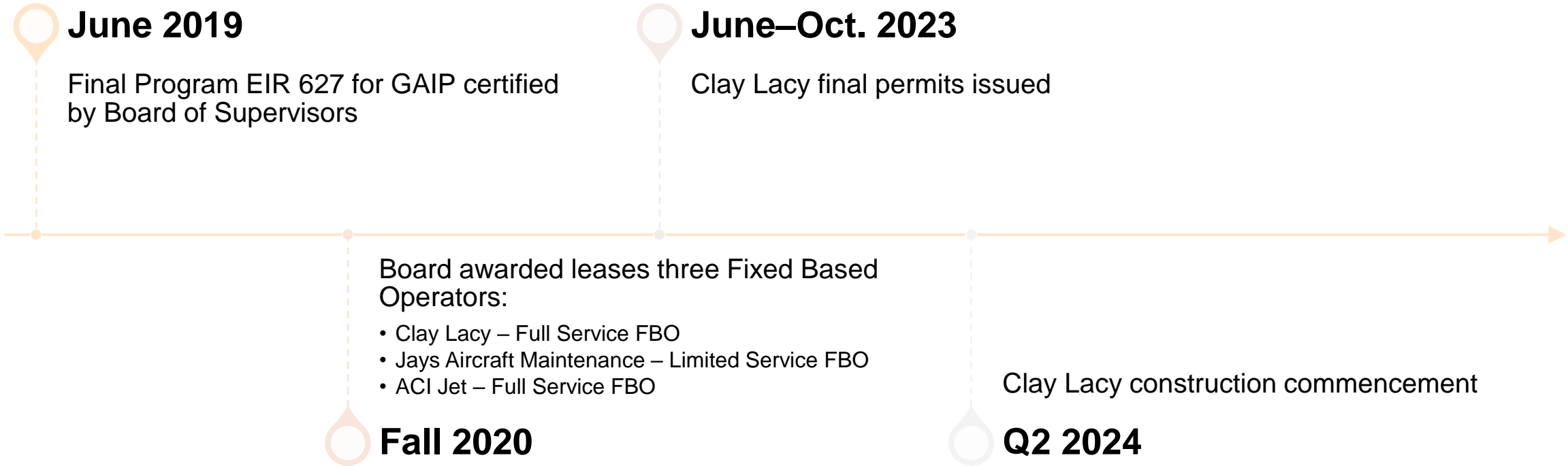
Future Improvements

- Electric Charging Needs
- Electric Vertical Take-Off and Landing Vehicle (eVTOL) Needs



General Aviation Improvement Program (GAIP)

GAIP



FBOs Capital Investment

ACI Jet - \$86,508,650

35 Year Lease Term

Approximately 31 acres

Clay Lacy – \$57,897,531

35 Year Lease Term

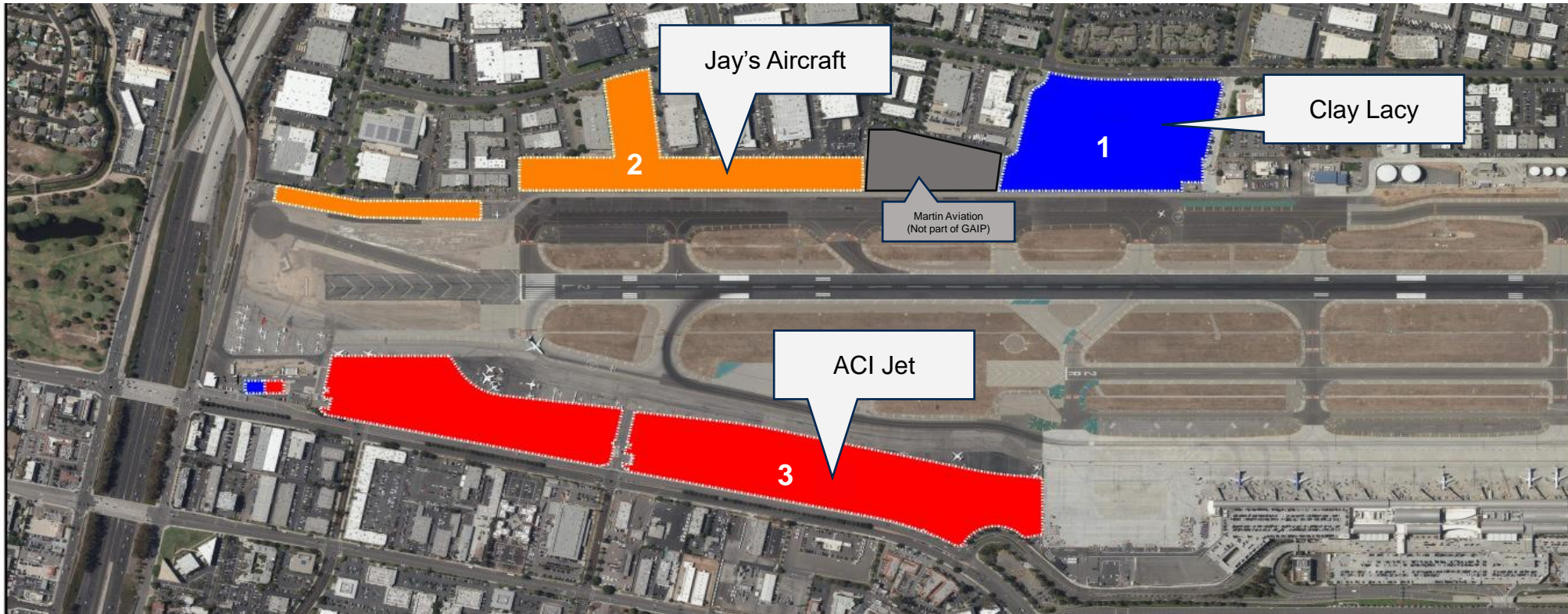
Approximately 14 acres

Jay's Air Center – \$17,818,991

30 Year Lease Term with 5 Year Option to Extend

Approximately 14 acres

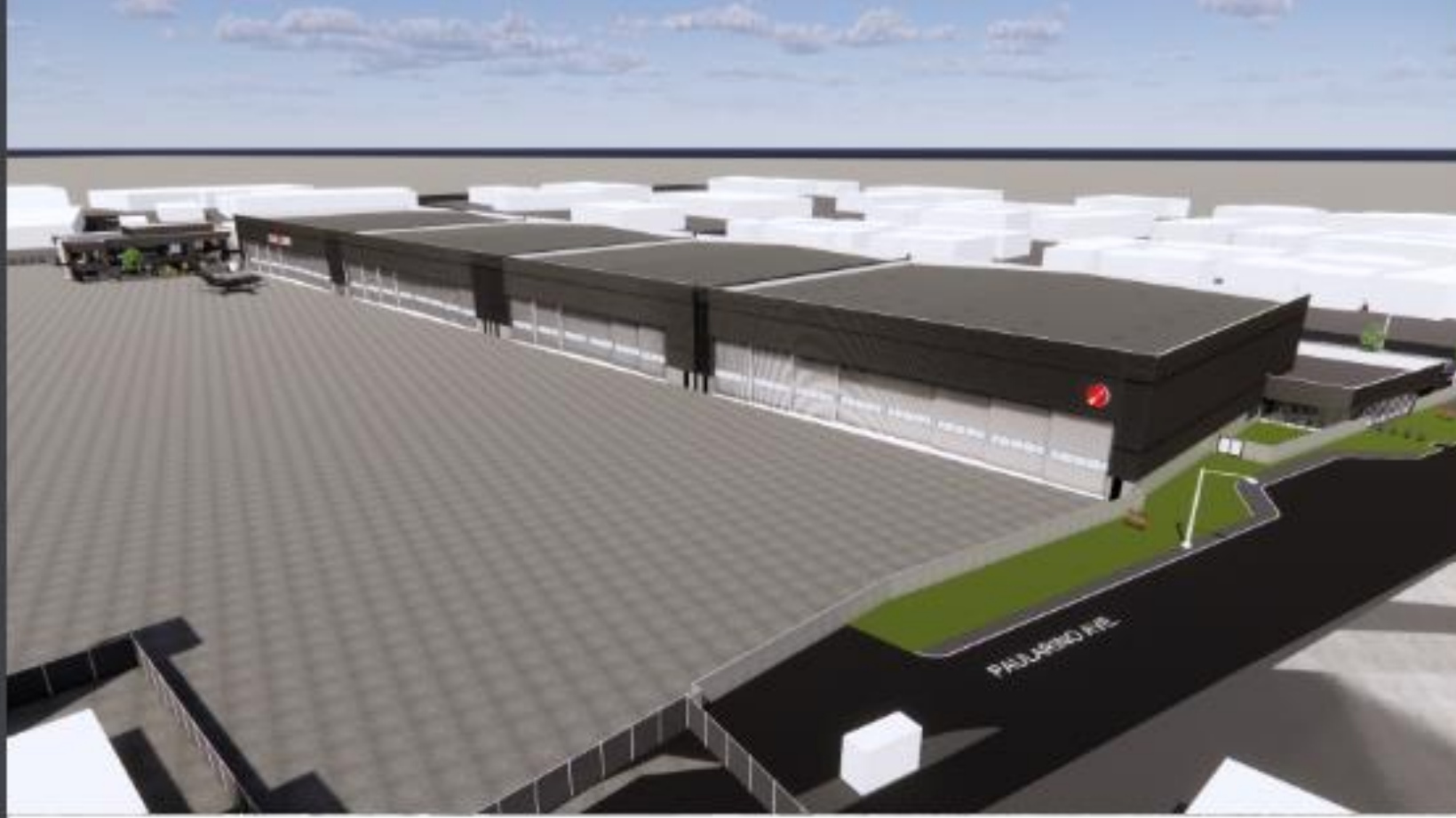
GAIP Map and Sequence Plan



	YR1	YR2	YR3	YR4	YR5	YR6	YR7	YR8	YR9
CLAY LACY	[Blue bar]								
JAY'S	[Orange bar]								
ACIJET			[Red bar]						

JOHN WAYNE AIRPORT
ORANGE COUNTY

CONSTRUCTION SEQUENCE. START AFTER RECEIPT OF NEPA, COUNTY PERMITS APPROVALS.



PL VIEW – OVERALL NORTHWEST SITE – LOOKING NORTHEAST



ARIEL VIEW – OVERALL NORTHWEST SITE – FRONT WITH FLIGHT SCHOOL – LOOKING SOUTH EAST



Clay Lacy Renderings

Jay's Renderings





Exterior Rendering 3, Bird's Eye View, Approach From Concourse Drive



Exterior Rendering 1, Bird's Eye View, Looking Southeast



Exterior Rendering 2, Bird's Eye View, Looking Northeast

ACI Jet Renderings

Concessions Program (Phase II)

Concession Development Program (Phase II)

- March 2023 – Issued an RFP that will redevelop 80% of its concessions program
- 37,000 sq ft of casual dining restaurants, quick-service, news and gift, specialty retail, automated retail, and coffee opportunities
- The vision for the new Concession Program at JWA is to truly represent the culture, vibe, and feel of Orange County
- JWA received some great proposals and Board made the selection couple of weeks ago. Award of leases projected to go to the Board Q2 2024
- The buildout of all concession will take 12-18 months in various phases



Links:

County Procurement Office:

<https://cpo.ocgov.com/doing-business-oc/vendor-registration>

Capital Improvement Program:

<https://ocpublicworks.com/ocpw/capital-improvement-program>

For more information:

OCAIR.COM



 @johnwayneairport

 @johnwayneair

 @johnwayneair

JOHN WAYNE AIRPORT
ORANGE COUNTY