



MENIFEE

PUBLIC WORKS & ENGINEERING

Presented by Nick Fidler, Public Works Director



CONSTRUCTION NETWORK
Connecting Owners to AEC and CM Industries



MENIFEE

CALIFORNIA

FY 23/24 CIP PROJECT STATUS

PROJECT		STATUS	PROJECT		STATUS	
TRANSPORTATION	Holland Road Overpass	Construction	STREET IMPROVEMENTS	Normandy Road Pedestrian Improvements	Completed	
	Bradley Road Bridge over Salt Creek	Design		Newport Road Raised Medians - Murrieta Rd to Bradley Rd – HSIP	Design	
	McCall Boulevard / I-215 Interchange	Design		Sun City Community Pedestrian Project – ATP	Completed	
	Scott Road / Bundy Canyon Road Widening	Design		Lazy Creek Park Pedestrian Project – ATP	Completed	
	Valley Boulevard Widening and Missing Links	Design		Beth Drive Street Improvements - Murrieta Rd to Melvin St	Design	
	McCall Boulevard Widening	Design		Bradley Road Widening near Paloma High School Northern Entrance	Construction	
	Bailey Park Boulevard Widening	Design		Romoland Grid Area - 3rd Street – ATP	Construction	
	Complete Streets Plan – Study	In Progress		McCall Blvd / Sun City Blvd - Westbound Turn Pocket Extension	Design	
	Citywide Bridge/Culvert Inventory – Study	In Progress		Pedestrian Crossing at Audie Murphy Road	Design	
	Garbani Road / I-215 Interchange	Design		Romoland Elementary School – ATP	Design	
	Paloma Wash Pedestrian Bridge	Design		Watson Road at Harvest Valley Elementary School – ATP	Design	
	Murrieta Road Bridge over Salt Creek	Design		La Piedra Road at Bell Mountain Middle School – ATP	Design	
	Menifee Road Widening - Garbani Rd to Scott Rd	Design		PUBLIC FACILITIES	New Quail Valley Fire Station No. 5	Construction
	Menifee Road/La Piedra Road Traffic Signal	Completed			New Menifee City Hall	Planning
Murrieta Road/Sun City Blvd. Traffic Signal	Completed	Park & Facility Multi-Use Trailers	Construction			
Murrieta Road/Rouse Road Traffic Signal	Completed	Civic Center Parking Lot	Design			
Menifee Road / Garbani Road Traffic Signal	Completed	Cherry Hills Facility – Ph. I	Design			
Antelope Road / MSJC Entrance Traffic Signal	Completed	Fire Station No. 76 - Living Area Improvements	Design			
Murrieta Road / La Piedra Road Traffic Signal	Completed *	Kay Cenicerros Parking Lot Renovation	Construction			
Goetz Road / Vista Way Traffic Signal	Design	Police Station Upgrades	Completed			
Menifee Road/Fire Station No. 76 Entrance Traffic Signal	Design	Above Ground Fuel Station	Planning			
Citywide Traffic Signal Safety Improvements - LRSP	Design	Citywide Facility Re-key Project	Design			
		New Community/Recreation Center	Design			
		ADA Self Evaluation and Transition Plan	In Progress			

*This project was a developer project and was completed by the developer.

FY 23/24 CIP PROJECTS CONT'D

PROJECT		STATUS	PROJECT		STATUS	
PARKS, TRAILS, RECREATION	Central Park Amphitheater	Construction	PMP	McCall Boulevard Resurfacing - Encanto to Antelope – PMP	Completed	
	AMR Skate Park Improvements	Design		Menifee Rd Resurfacing and Median Improvements - Holland Rd to Newport Rd	Completed	
	Parking Lot Resurfacing - E.L. Petersen Park	Completed		Romoland Grid Neighborhood Resurfacing – South	Completed	
	Evans Park North - Design & Construction	Planning		Casa Blanca Neighborhood - south of McCall Blvd	Completed	
	Gale Webb Action Sports Park Restroom	Design		Willows Neighborhood Resurfacing - Menifee Lakes	Completed	
	Park and Right of Way Signage	Design		Murrieta Road Resurfacing - Salt Creek to San Quintin Rd	Completed	
	Sun City Park Development	Design		FY 22-23 Slurry Seal Program	Completed	
	La Ladera Park Enhancements	Construction		Mapes Road Resurfacing - Sherman Rd to Antelope Rd	Design	
	Quail Valley Park	Planning		Menifee Road Resurfacing - Simpson Rd to McCall Blvd	Design	
	Sports Court Resurfacing	Completed		Audie Murphy Ranch Resurfacing	Completed	
	Salt Creek Trail Parking	Planning		FY 23-24 Local Roads AC Resurfacing Program	Construction	
	Salt Creek Trail Improvements	Completed		FY 23-24 Slurry Seal Program NEW	Design	
	Park Lighting	Planning		Pavement Management Program Update	In Progress	
	Public Arts in Parks	Planning		STREETLIGHTS	Quail Valley Grid Area Streetlights	Construction
	E.L. Peterson Dog Park Expansion	Design		IT	Park Surveillance and Technology Upgrades- AMR	Planning
	Park Amenity Enhancements	Planning	Enterprise Resource Program (ERP) Implementation Project		In Progress	

41
Projects in
Planning/Design

15
Projects in
Progress/
Construction

22
Projects
Completed

FY 24-25 CIP PROJECTS BY CATEGORY

	PROJECT NO.	PROJECT NAME	FY 24-25 ADOPTED
TRANSPORTATION	CIP 20-03	McCall Boulevard Widening	\$520,237
	CIP 25-03	Murrieta Rd Widening - Holland to Newport	\$1,500,000
	CIP 25-04	Holland Rd Widening - Bradley to Haun	\$839,000
TRAFFIC SIGNALS	CIP 23-02	Goetz Road/Vista Way Traffic Signal	\$1,202,594
	CIP 25-05	Evans Road/Craig Avenue Traffic Signal	\$175,500
STREET IMPROVEMENTS	CIP 24-04	Romoland Elementary School - ATP	\$589,000
	CIP 24-15	Watson Rd at Harvest Valley Elementary School - ATP	\$553,000
	CIP 25-01	Murrieta Rd/Holland Rd Intersection Improvements	\$550,000
PMP	PMP 25-01	FY 24-25 Slurry Seal Program	\$923,000
	CIP 25-07	FY 24-25 Local Roads AC Resurfacing Program	\$1,409,000
	CIP 25-08	Antelope Road - Holland to Newport	\$1,800,000

FY 24-25 CIP PROJECTS BY CATEGORY CONT'D

	PROJECT NO.	PROJECT NAME	FY 24-25 ADOPTED
DRAINAGE	CIP 25-09	Garbani Road Drainage Improvements - MDP	\$749,000
PUBLIC FACILITY	CIP 25-06	Fire Station No. 68 - Interior Improvements - Ph. II	\$108,548
PARKS, TRAILS, & RECREATION	CIP 22-27	Quail Valley Park	\$250,000
	CIP 24-12	La Ladera Park Enhancements	\$900,000
	CIP 24-13	Public Arts in Parks	\$50,000
IT	CIP 23-14	Enterprise Resource Program (ER) Implementation Project	\$183,333
	CIP 25-02	Axon RMS System for Police Department Implementation <i>After deliberation, the Police Department has decided not to proceed with this project. The project would be deleted from the CIP and the funds would remain in DIF Citywide - General Government fund balance.</i>	\$50,000
TOTAL			\$12,352,212





PALOMA WASH PEDESTRIAN BRIDGE



Project Details:

The project proposes to build a 14-foot pedestrian bridge over the Paloma Wash Channel connecting the City's Central Park to public transportation, shopping and other amenities located along Haun Road.





BRADLEY ROAD BRIDGE OVER SALT CREEK CREEK



Project Details:

Construction of a bridge over the Salt Creek Channel with capacity for four lanes replacing the existing at grade two-lane road. The project will also construct sidewalks, relocate utilities, and improve drainage.

- Improve drainage reducing closures due to flooding after rain events
- Improve mobility to motorists and pedestrians



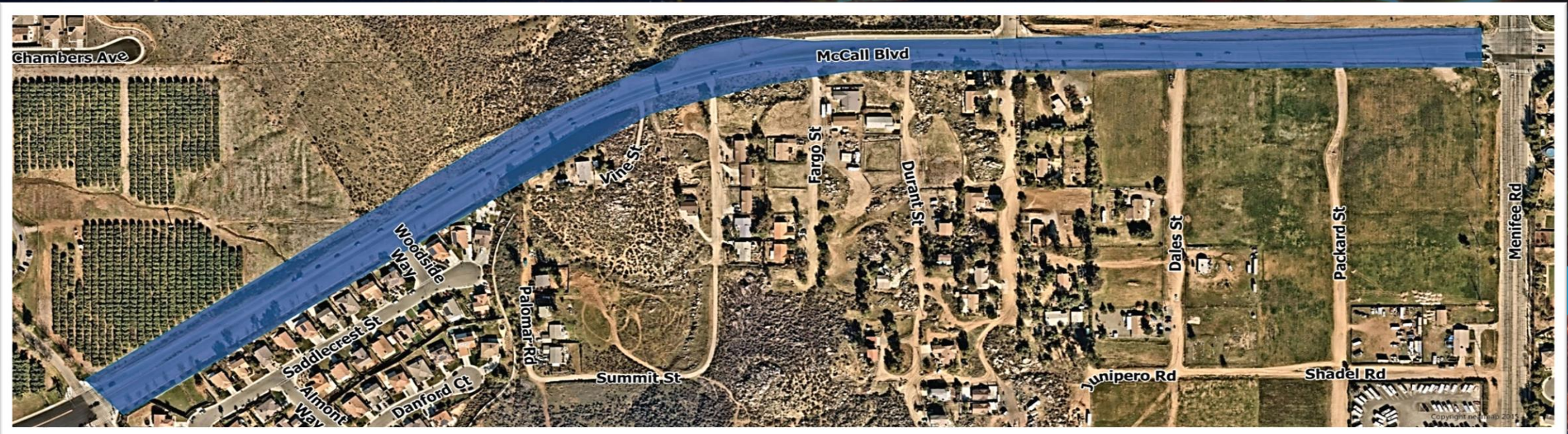


MCCALL BLVD. WIDENING



Project Details:

The project is located on McCall Boulevard between Oakhurst Avenue (Hospital Entrance) and Menifee Road. The project will widen the existing two-lane road to four lanes including a 12' center median. The project will also relocate utilities, install sidewalks and ADA ramps, and modify two existing traffic signals. The project is needed in order to mitigate increase traffic through the area due to residential and commercial development .





MCCALL BLVD./I-215 INTERCHANGE



Project Goals:

- Alleviate traffic congestion on the east side of I-215
- Improve on and off ramps
- Provide increased pedestrian accessibility



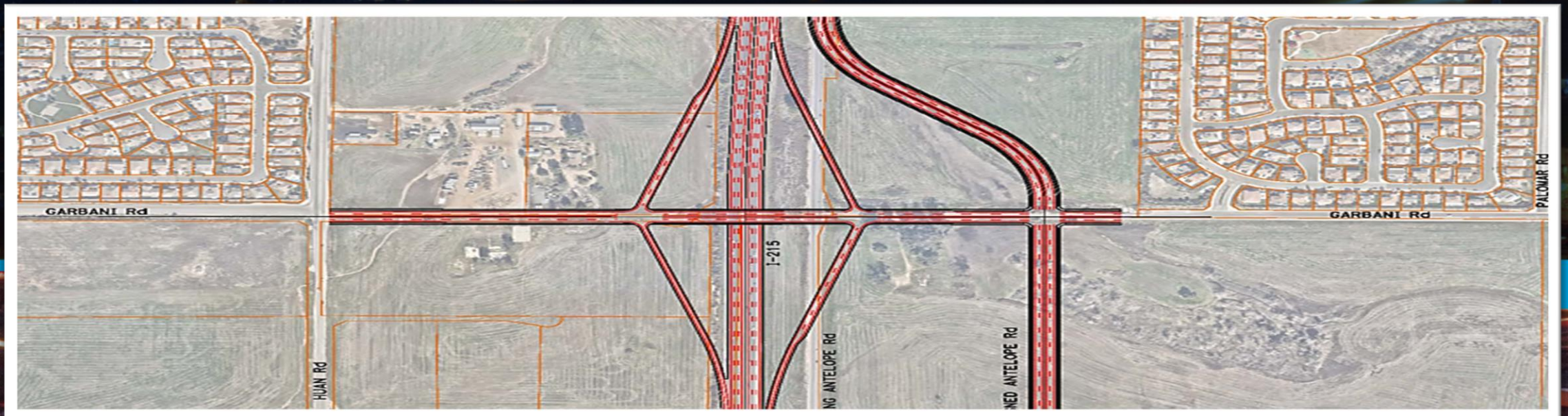


GARBANI RD / I-215 INTERCHANGE



Project Details:

This project proposes to construct a new interchange connection at Garbani Road and I-215. The project is needed to mitigate anticipated future traffic impacts from private developments forecasted in the City General Plan. Additionally, the interchange will alleviate traffic congestion on Scott Road and provide an additional east-west connectivity for motorists and pedestrians.



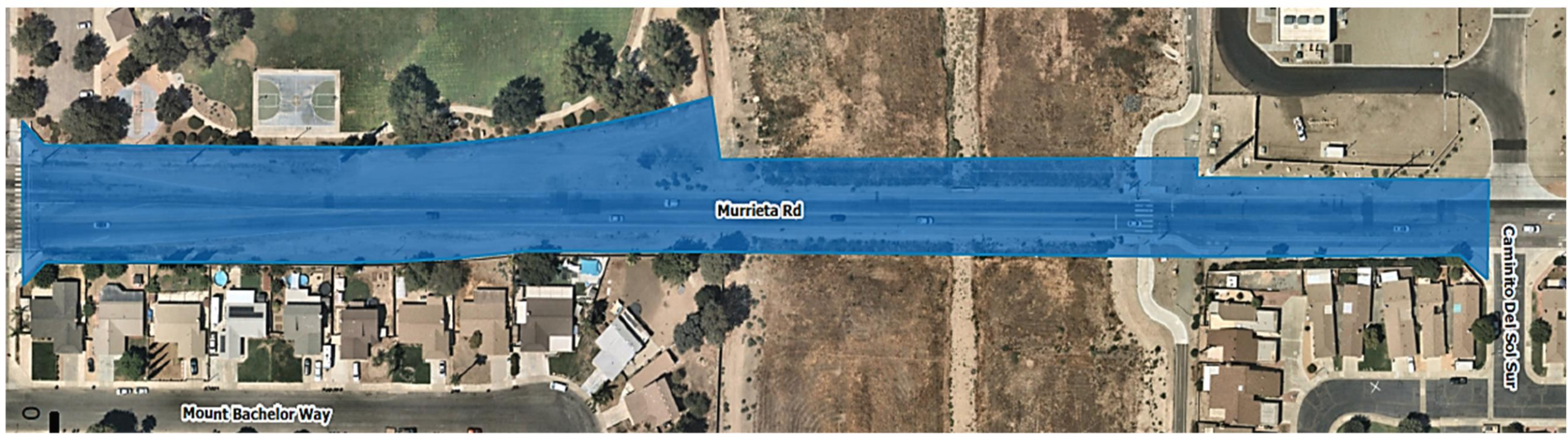


MURRIETA ROAD BRIDGE OVER SALT CREEK



Project Goals:

- Improve drainage reducing closures due to flooding after rain events
- Provide better accessibility to pedestrians





SCOTT RD/BUNDY CANYON RD WIDENING



Project Goals:

- Alleviate traffic congestion by widening to four-lane roadway
- Promote alternative transportation modes by installing buffered bike lanes
- Increase safety by installing additional traffic signals



Existing



Proposed

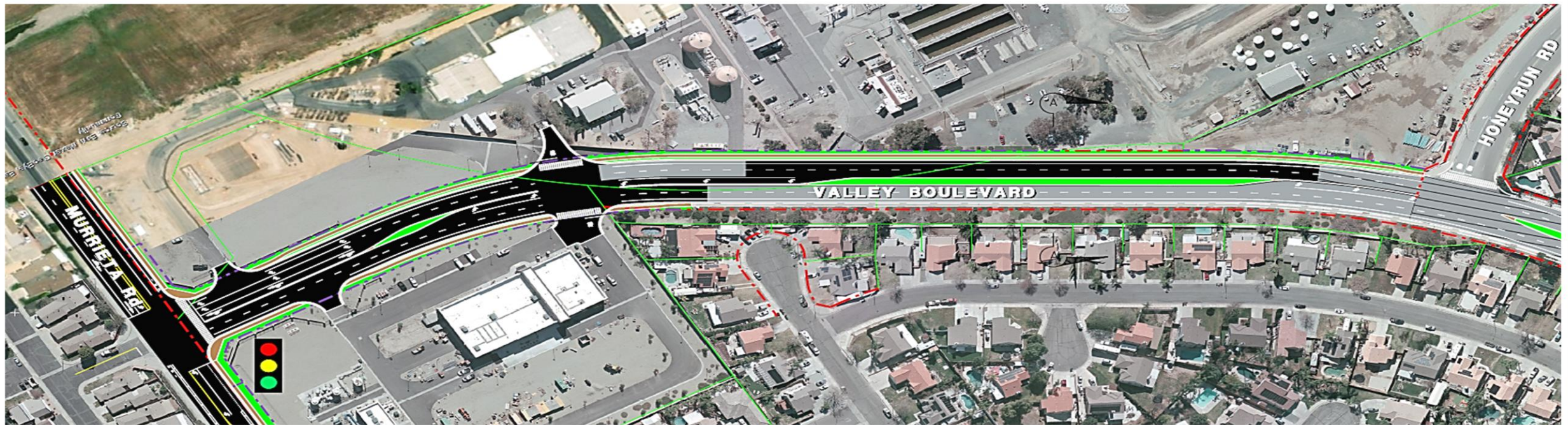


VALLEY BOULEVARD WIDENING



Project Details:

- Mitigate traffic congestion from new developments on the north side of the City
- Provide necessary connection to Murrieta Road





UPCOMING CITY FACILITIES



Project Details:

- Design and Construct new 65,000 GSF City Hall
- Design and Construct new Meniffee Police Department
- Design and Construct new Public Works Maintenance Operations Center
- Design and Construct new Fire Station (Heritage Area)

Thank you.

QUESTIONS?



MENIFEE
CALIFORNIA

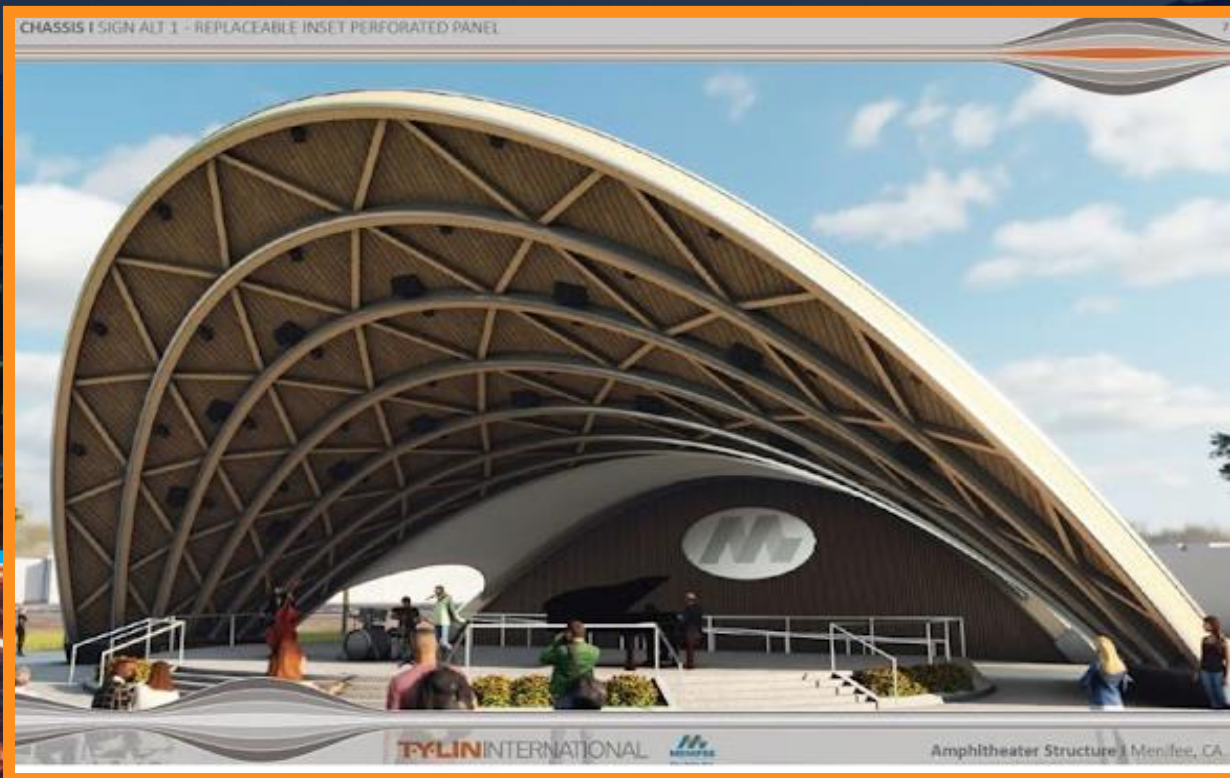


CENTRAL PARK AMPHITHEATER



Project Details:

- Facilitate outdoor events, such as the Menifee Music & Arts Festival
- Expand cultural arts programming throughout the City



Holland Rd/I-215 Overcrossing

