

Construction Network

Lauren Alarie, PE

Director of Programs and Projects, NAVFAC Southwest

14 MAY 2024

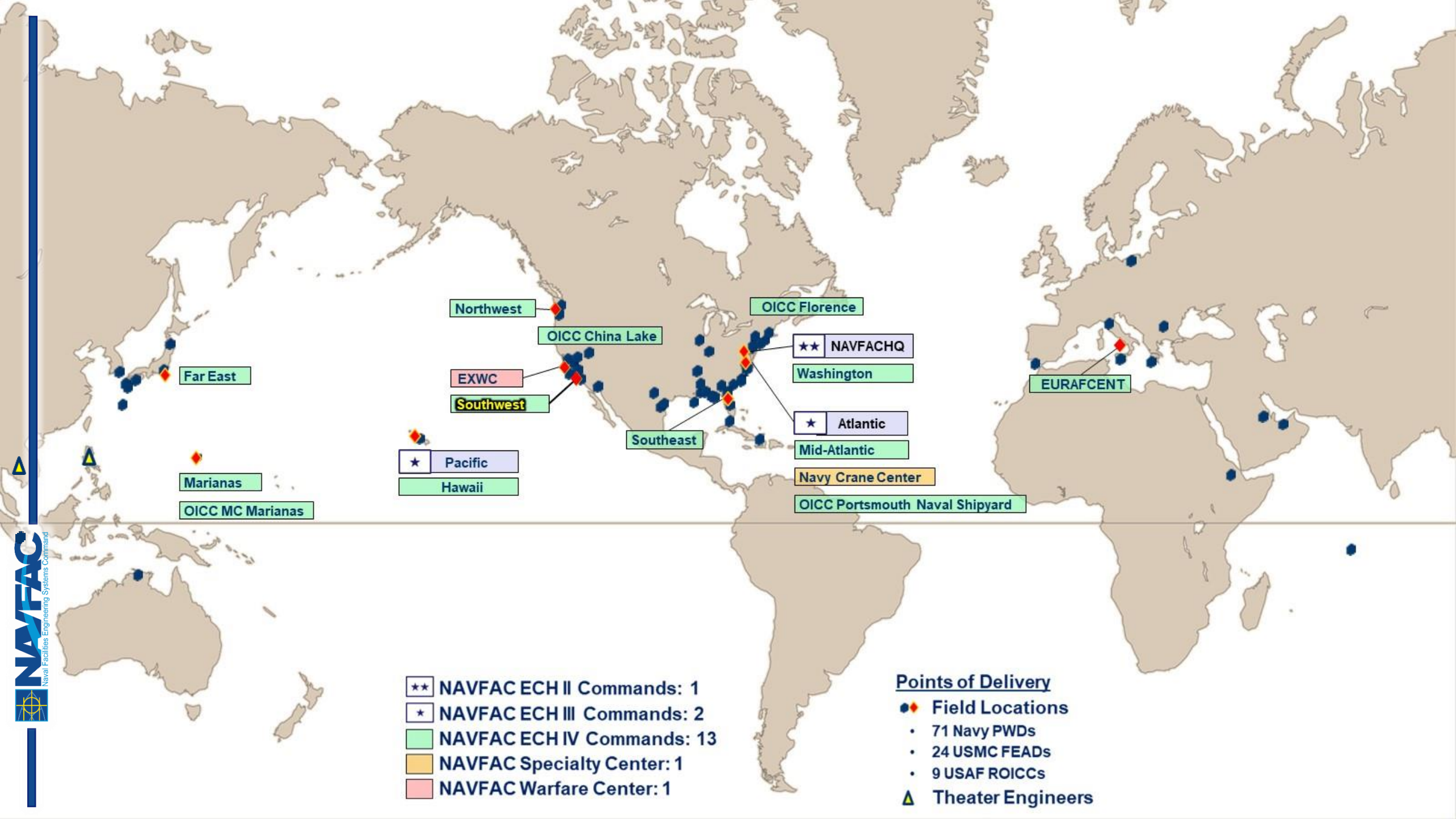
NAVFAC SYSCOM Mission

Strategic Priorities:

1. **ACCELERATE EXECUTION**
2. **SYSCOM AUTHORITIES**
3. **WORKFORCE & PERFORMANCE**

OUR NORTH STAR

Drive performance and outcomes of SYSCOM Capabilities to effectively enable Fleet readiness and Marine Corps force generation.



- ★★ NAVFAC ECH II Commands: 1
- ★ NAVFAC ECH III Commands: 2
- NAVFAC ECH IV Commands: 13
- NAVFAC Specialty Center: 1
- NAVFAC Warfare Center: 1

- Points of Delivery**
- Field Locations
 - 71 Navy PWDs
 - 24 USMC FEADs
 - 9 USAF ROICCs
 - Theater Engineers

NAVFACSW Area of Responsibility



~ 140 Military



~ 3,300 Civilians



• 10 Navy

• 8 Marine Corps

• 1 Air Force

~ \$3B of Products & Services Executed Annually Across 6 States!

SOUTHWEST LEADERSHIP



NAVFAC Southwest

Executive Steering Group

- Member
- Non-ESG Member

Commanding Officer
CAPT Laurie Scott

Business Director
Kathy Stewart

Executive Officer
CAPT Allen Willey

Senior Enlisted Advisor
CUCS Eric Dirk

Chief Engineer
John Coon

Operations Officer
CAPT Blake Burket

Deputy Operations Officer
Soliman Labrador

Counsel
Susan Hulbert

Chief Contracting Officer Acquisition
Renae Kvendru

Comptroller Financial Management
Jim Sicari

Safety
Jennifer Dunaway

Small Business
Anthony Phillips

Small Business
Karen Barba

Assistant Inspector General
Joe Stubitz

Strategy & Future Requirements
Brittney Williams

Total Force Director
Richard Hickman

Command Information Officer
James Sullivan

Public Affairs
Katie Cadio

Public Affairs
Mario Icar

Public Works
Jim Sanfedele

Planning, Design, & Construction
John Coon

Environmental
Chantry Davis

Real Estate
Dave Bixler

PPV
Chris Parry

Assistant Operations Officer
CDR Majorie Gruber

Assistant Operations Officer
CDR Adam Perrins

Assistant Operations Officer
LCDR Matthew Pine

DEMOGRAPHICS

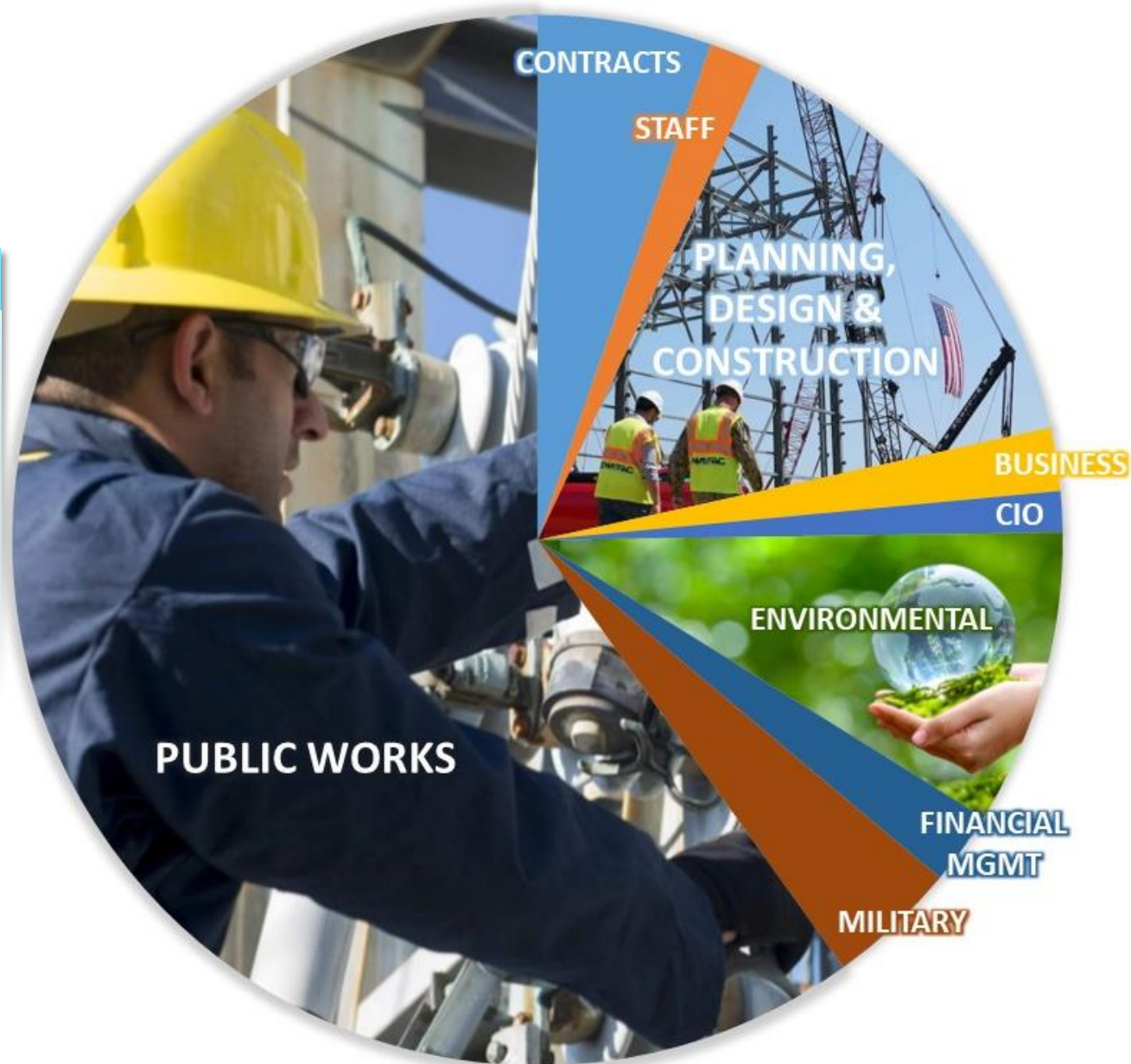
Navy	USMC	USAF
10 Installations	8 Installations	1 Installation
11,000 Facilities	10,000 Facilities	1,725 Facilities
19 Runways	12 Runways	3 Runways
61 Hangars	30 Hangars	8 Hangars
1.8M Acres	795k Acres	6,400 Acres
189 Special Areas	640 Training Areas/Ranges	
42 Piers/Wharves	6 Landing Beaches/Docks	
8 Small Arms Ranges	135 Small Arms Ranges	
17 Reserve Centers	13 Reserve Centers	
530 Tenant Commands	81 Tenant Commands	



~ 140 Military



~ 3,300 Civilians



PUBLIC WORKS

CONTRACTS

STAFF

PLANNING,
DESIGN &
CONSTRUCTION

BUSINESS




CIO

ENVIRONMENTAL

FINANCIAL
MGMT

MILITARY

NAVFACSW Construction Outlook

Service Branch	Installation	Pre-Award		Post-Award	
	NB Coronado	\$388M	\$2.8B	\$1,247M	\$4.8B
	NAS Lemoore	\$72M		\$863M	
	NAWS China Lake	\$325M		\$1,046M	
	NB San Diego	\$167M		\$600M	
	NWS Seal Beach	\$33M		\$357M	
	NAS Fallon	\$380M		\$212M	
	NB Ventura County	\$788M		\$264M	
	NB Point Loma	\$243M		\$145M	
	NAF El Centro	\$7M		\$60M	
	NSA Monterey	\$442M		\$45M	
	MCB Camp Pendleton	\$441M	\$1.3B	\$960M	\$2.5B
	MCAS Miramar	\$192M		\$659M	
	MCAGCC 29 Palms	\$139M		\$410M	
	MCAS Yuma	\$165M		\$268M	
	MCLB Barstow	\$6M		\$66M	
	MCRD San Diego	\$292M		\$44M	
	MCAS Camp Pendleton	\$10M		\$41M	
	MCMWTC Bridgeport	\$38M		\$12M	
	Travis AFB	\$65M	\$65M	\$230M	\$230M

Post Award Construction Workload @ \$7.5 Billion...Poised To Do More! Tracking to Award \$4.1 Billion in FY24

Top 6 Considerations at NAVFAC Southwest

- 1. Ageing Workforce**
- 2. AFFF Replacement**
- 3. Electrification**
- 4. Disasters ...Manmade and Natural**
- 5. Major Programs**
 - HPNS
 - NPS
 - PDI
- 6. Project Labor Agreements**

Questions & Answers