



**Capital Improvement Program
Construction Network – IE Water**

June 6, 2024

About Western Water



Providing drinking water, recycled water, and wastewater services to nearly 1 million people



Partnerships with 14 agencies

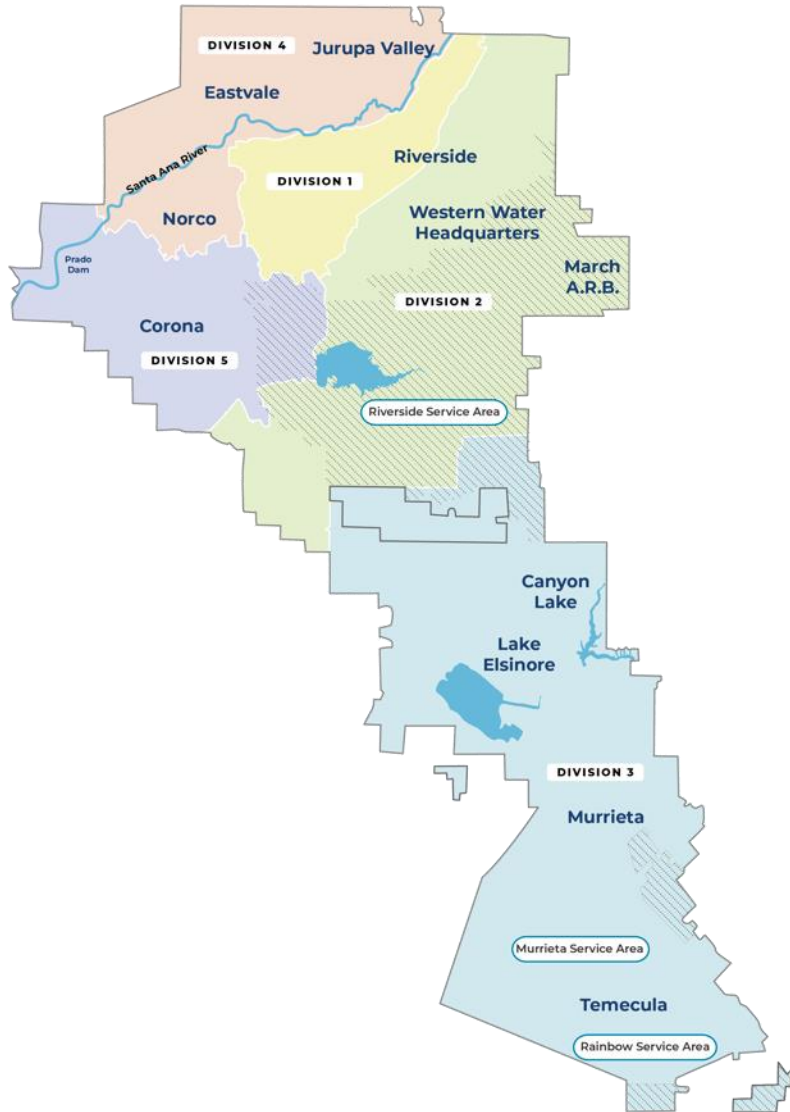


Serving nearly 25,000 direct connections (100,000+ people)



Member agency of the Metropolitan Water District of Southern California

Western's service area



- **Established in 1954 to deliver imported water**
 - 527 square mile service area
- **Located in western Riverside County**
 - 60,000 to 85,000 acre-feet of water served annually
- **Our Western Water Portfolio**
 - 38% local supply + 62% imported water

Western's Board of Directors

- Five Board members, publicly elected
- Public Board meetings first and third Wednesdays of every month



Mike Gardner

Division 1



Gracie Torres

Division 2



Brenda Dennstedt

Division 3



Laura Roughton

Division 4



Fauzia Rizvi

Division 5

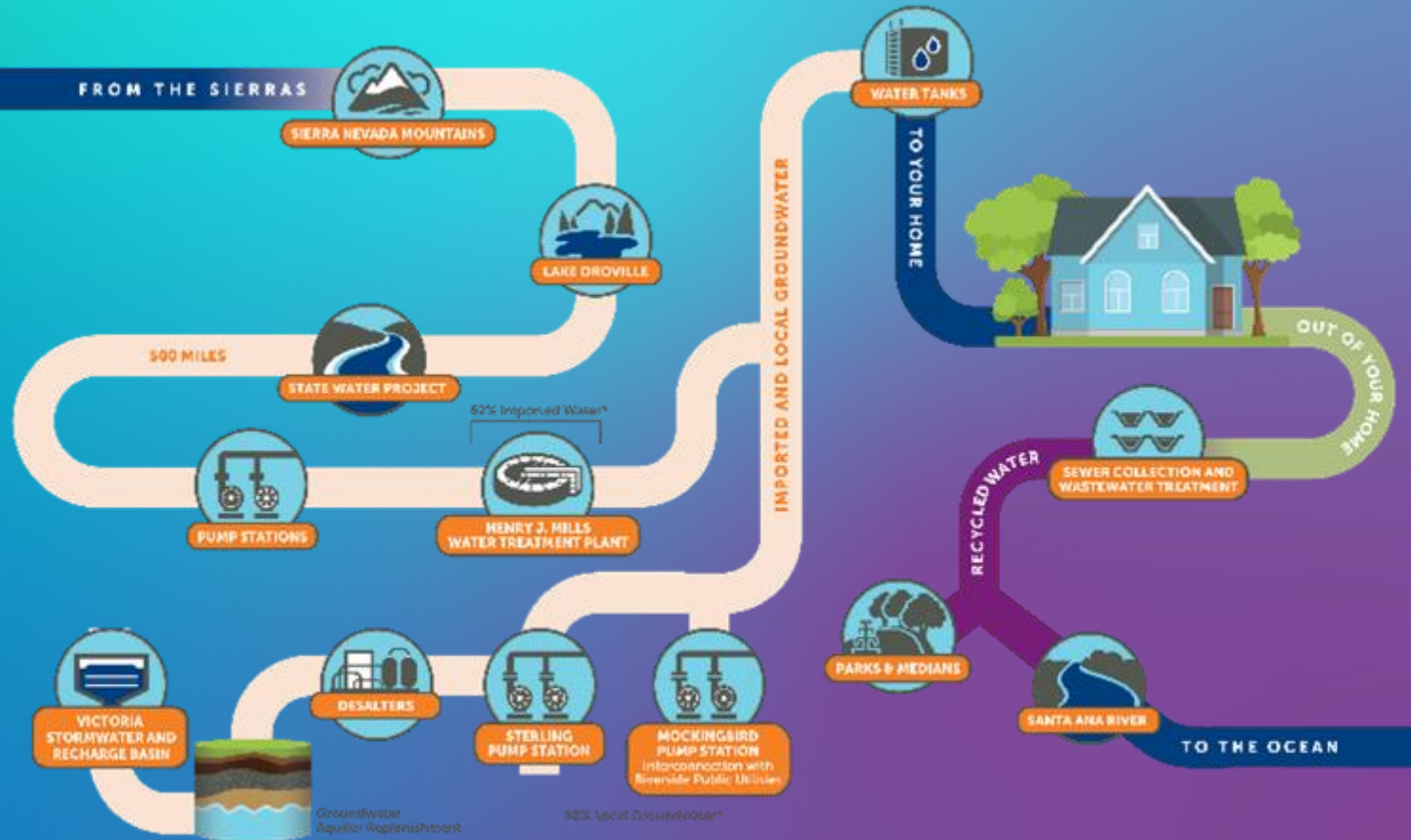
RIVERSIDE: WHERE YOUR WATER COMES FROM

700+ MILES IMPORTED WATER

499 MILES WATER SYSTEM PIPELINE

149 MILES SEWER PIPELINE

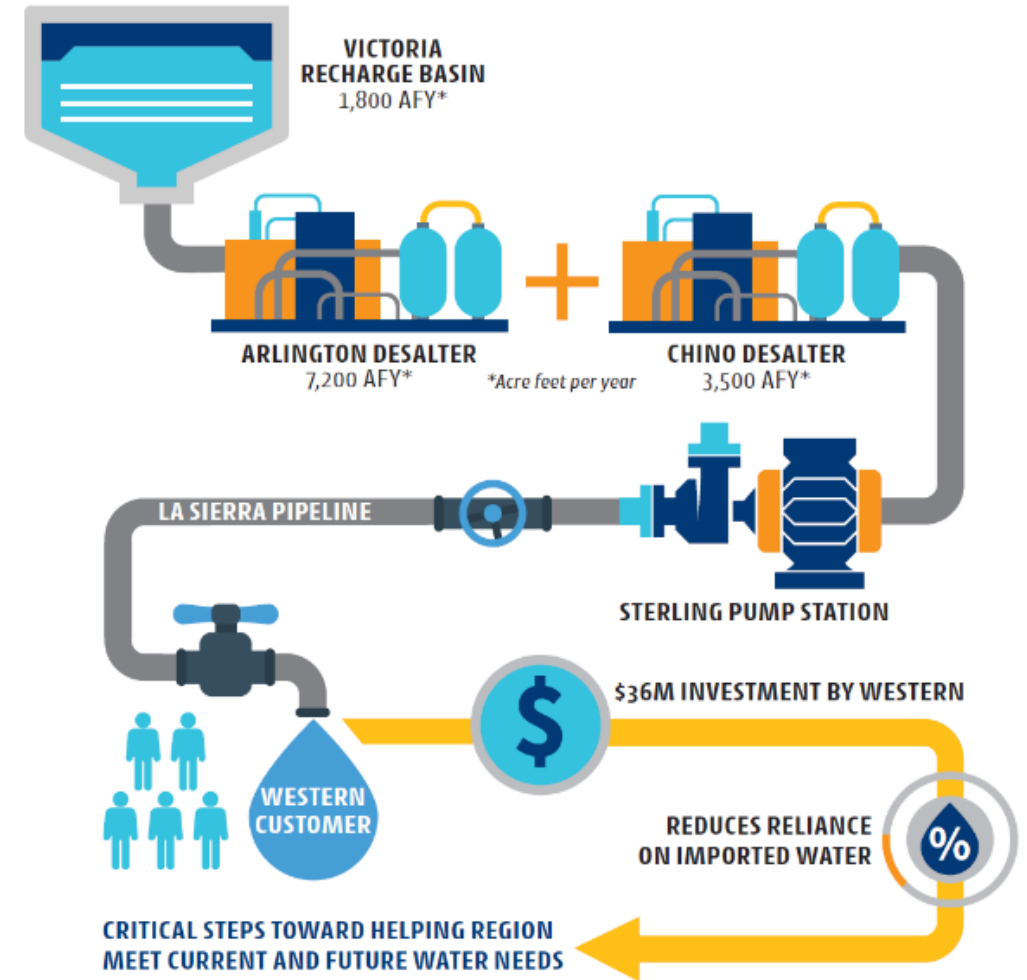
48 MILES RECYCLED WATER PIPELINE



SECURING LOCAL SUPPLY

Regional leadership through \$90 million local investment, \$43 million of which was grant funded

Connecting the drops across the region and protecting local groundwater supplies





Capital Improvement Program

CAPITAL SPENDING PLAN OVERVIEW

Fiscal Year	Gross Project Total	Offset Total*	Net Project Total	
FY 24-25	\$ 40,120,319	\$ (11,939,536)	\$ 28,180,783	
FY 25-26	\$ 48,685,955	\$ (15,986,005)	\$ 32,699,950	
FY 26-27	\$ 30,911,624	\$ (4,962,624)	\$ 25,949,000	<i>(Projected)</i>
FY 27-28	\$ 36,191,972	\$ (3,250,962)	\$ 32,941,010	<i>(Projected)</i>
FY 28-29	\$ 24,503,013	\$ (1,248,010)	\$ 23,255,003	<i>(Projected)</i>

* Totals include funding offsets derived from Federal and State grant funding, and partner agency agreements for specific projects.

TOP 10 PROJECTS – YEAR 1 (~60%)



1. Magnolia Avenue Interconnection with Riverside Public Utilities (14)
Gross: \$6.5M
Offset: \$5.2M
Net: \$1.3M



2. Linear Asset Management Program - Carry Over (15)
Gross: \$5.3M
Offset: NA
Net: \$5.3M



3. McKinley Grade Separation Project (16)
Gross: \$2.2M
Offset: NA
Net: \$2.2M



4. Enhanced Recharge Project: Santa Ana River Spreading Basins (9)
Gross: \$2.1M
Offset: \$2.1M
Net: \$0



5. Permanent Power Generator at Mockingbird (26)
Gross: \$2.0M
Offset: \$1.4M
Net: \$0.6M

TOP 10 PROJECTS – YEAR 1 (~60%) CONTINUED



6. SARRCUP
Non-Potable Well
#7 and Pipeline
(17)
Gross: \$1.8M
Offset: \$1.5M
Net: \$0.3M



7. Master Plan -
Rancho California
Water District
Regional Intertie (33)
Gross: \$1.4M
Offset: NA
Net: \$1.4M



8. Woodcrest-
Rinehart
Relocations (32)
Gross: \$1.0M
Offset: NA
Net: \$1.0M



9. Rainbow - Upsize
Metropolitan Water
District of Southern
California
Connection (83)
Gross: \$1.0M
Offset: NA
Net: \$1.0M



10. Minor Capital
Project Program (1)
Gross: \$1.0M
Offset: NA
Net: \$1.0M

Top 10 Year 1 Total:
\$24.3M (~60%)

TOP 10 PROJECTS – YEAR 2 (~71%)



1. Jefferson Avenue Water Improvement - Rancho California Water District Interconnection (28)
Gross: \$7.2M
Offset: \$4.1M
Net: \$3.1M



2. PFAS Removal Facility at WWRF (19)
Gross: \$5.9M
Offset: \$4.7M
Net: \$1.2M



3. Linear Asset Management Program - Carry Over (15)
Gross: \$4.7M
Offset: NA
Net: \$4.7M



4. SARRCUP Non-Potable Well #7 and Pipeline (17)
Gross: \$4.0M
Offset: \$3.0M
Net: \$1.0M



5. Master Plan - Rancho California Water District Regional Intertie (33)
Gross: \$3.9M
Offset: \$1.1M
Net: \$2.8M

TOP 10 PROJECTS – YEAR 2 (~71%) CONTINUED



6. Arlington
Desalter Granular
Activated Carbon
for PFAS (42)
Gross: \$3.0M
Offset: NA
Net: \$3.0M



7. WWRF
Automation
Upgrade (103)
Gross: \$1.7M
Offset: \$1.4M
Net: \$0.3M



8. Riverside New
Pressure Reducing
Valves (88)
Gross: \$1.3M
Offset: NA
Net: \$1.3M



9. Madison Avenue
Sewer Improvement (30)
Gross: \$1.3M
Offset: NA
Net: \$1.3M



10. Madison Avenue
Water Improvement (29)
Gross: \$1.3M
Offset: NA
Net: \$1.3M

Top Year 2 Total:
\$34.3M (~71%)

OTHER CIP FY 2024 / 25

Storm Drain Water Pipeline Relocations - \$1,000,000

SCADA Master Plan Implementation - \$600,000

Hillside Reservoirs Rehabilitation - \$500,000

MGL Choi Drive Valve Replacement - \$475,000

Operations Office Modifications - \$350,000

Fleet Electrification - \$300,000

Microwave Communication Upgrades - \$225,000

Meter Replacements - \$160,000

Chlorine Contact Basin Mods - \$185,000

Backflow Upgrades - \$120,000





Thank you!