



METROLINK

Program Delivery – Projects, Procurements and Planning

Construction Network – September 24, 2024

Background of the Metrolink System



METROLINK



Metrolink System

- JPA
- Serve 6 Counties
- 7 Routes/Lines
- 547 Route Miles
- 67 Stations



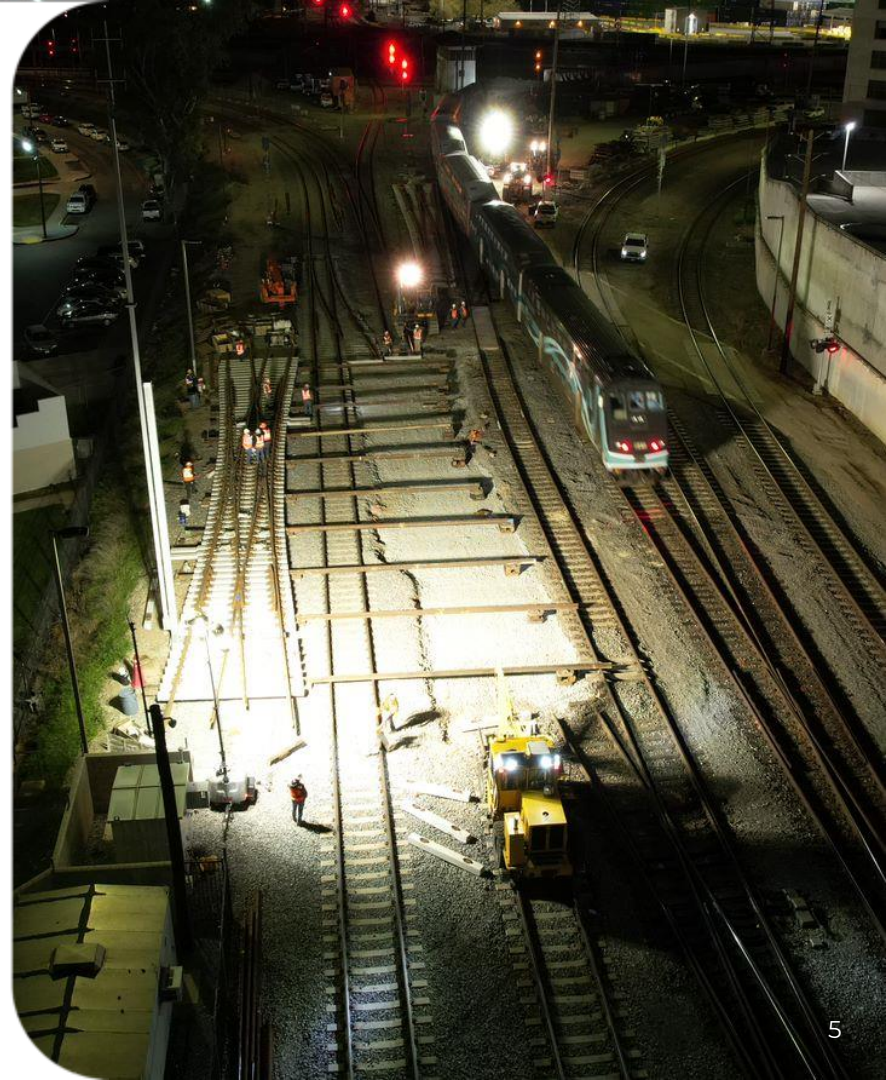
Program Delivery Department

- Capital Construction (including SCORE)
 - Improve infrastructure
 - Increase service
- State of Good Repair
 - Track/Structures/Signals
 - Facilities/Rolling Stock
- 3rd Party Projects
- Standards and Design



Types of Projects

- Modifications and additions to an existing in-service Railroad
 - Trackwork
 - Structures (Bridges/Culverts)
 - Facilities
 - Grade Crossings
 - Train Control Systems (S & C)
 - Stations (Platforms/Underpass)
 - Retaining Walls



Types of Construction Contracts

- Invitation for Bid (typically Design-Bid-Build)
 - Register on Metrolink's Vendor portal at [Doing Business | Metrolink \(metrolinktrains.com\)](https://www.metrolinktrains.com/Doing-Business)
- Job Order Contracts
 - Track
 - Culverts
 - Fencing
- On-Call Contracts
- CM/GC & Progressive Design-Build Considered in the future

Understanding the Railroad Environment





Metrolink's Mission

To provide safe, efficient, dependable and on-time transportation service that offers outstanding customer experience and enhances quality of life.

Program Delivery:

- Safe - Job Site Safety
- Dependable Service - Performing Construction around Operational Railroad

Job Site Safety

- **Safety is Metrolink's Top Priority**

- RWP training
- Protected - RWIC control
- Every shift starts with a Job Briefing
 - including a Risk Assessment for that day's work activities
- Site specific work plans due before every major work activity
 - SSWP's include detailed work plans, equipment, contingency plans, etc.
- Communication



Training Requirements

- Select Roles/Responsibilities (all courses combined take one week)
 - Maintenance of Way Operating Rules (MOWOR)
 - Maintenance of Way Safety Rules (MOWSR)
 - On-Track Safety Manual (OTSM) one day class
 - Continuously Welded Rail (CWR)
 - Roadway Maintenance Machines Training (RMMS)
 - Track Maintenance Manual (TMM)
- All Workers
 - Roadway Worker Protection (RWP)
- Classes provided by Metrolink
 - Metrolink may cover the cost of some of these classes





Performing Construction around Operational Railroad

- Construction to occur during active train service
- Construction during work windows where service is suspended
 - Windows scheduled in advance (fixed calendar)
 - Additional windows by exception only (90-day notice/COO approval)
- Metrolink provides Flagging allowances
- Scheduling vital for success
 - Entire project (with targeted work windows)
 - 3 week look-ahead
 - Hour-by-hour for Window

Timelapse of April 2023 AWW

METROLINK

**Rail Modernization at
Los Angeles Union Station
Los Angeles, CA**

CP Mission AWW #4
3/31/2023 – 4/3/2023

Planning and Projects



METROLINK

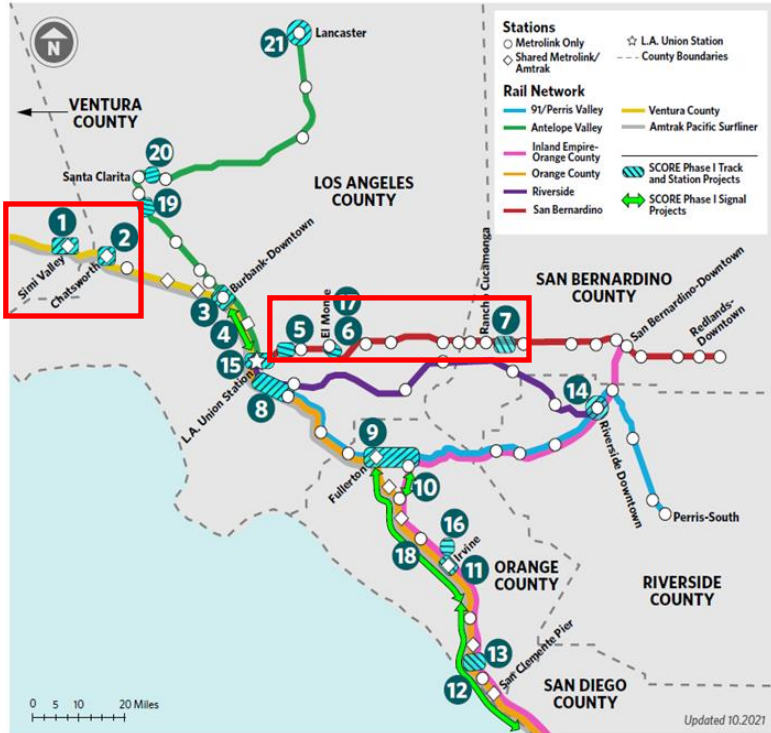


Planning for the Future

- Regional Railroad
- 2028 Olympics Ready
- Expansion:
 - Infrastructure
 - Systems
 - Stations
- Rehabilitation



METROLINK



SCORE PHASE 1 PROJECTS

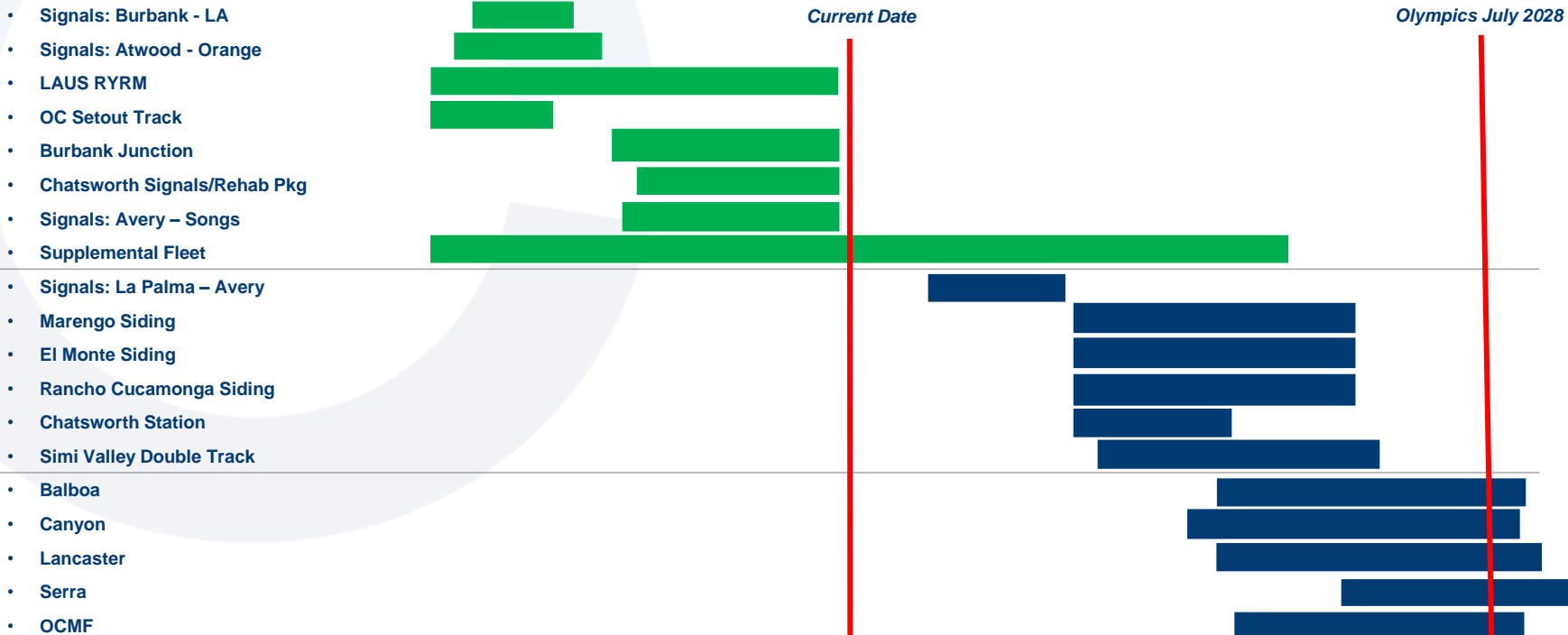
- 1 Simi Valley Double Track
- 2 Chatsworth Station Improvements
- 3 Burbank Junction Speed Improvements
- 4 Signal Improvements (Burbank-L.A.)
- 5 Marengo Siding Extension
- 6 El Monte Siding Extension
- 7 Rancho Cucamonga Siding Extension
- 8 Hobart to Commerce Capacity Improvements
- 9 Fullerton Interlocker (incl. Atwood-Esperanza 3rd Track)
- 10 Signal Improvements (Atwood-Orange)
- 11 Irvine Station Improvements
- 12 Signal Improvements (Avery-Songs)
- 13 Serra Siding Extension
- 14 Riverside - Downtown Station Improvements
- 15 Link Union Station
- 16 Orange County Maintenance Facility
- 17 Tyler Ave and Cogswell Rd Grade Crossing Improvements
- 18 Signal Improvements (La Palma-Avery)
- 19 Balboa Double Track Extension
- 20 Canyon Siding Extension
- 21 Lancaster Terminal Improvements


*Note: Link US Phase A includes Metrolink's LAUS RYRM Project

\$2.4B
Secured

SCORE Phase I

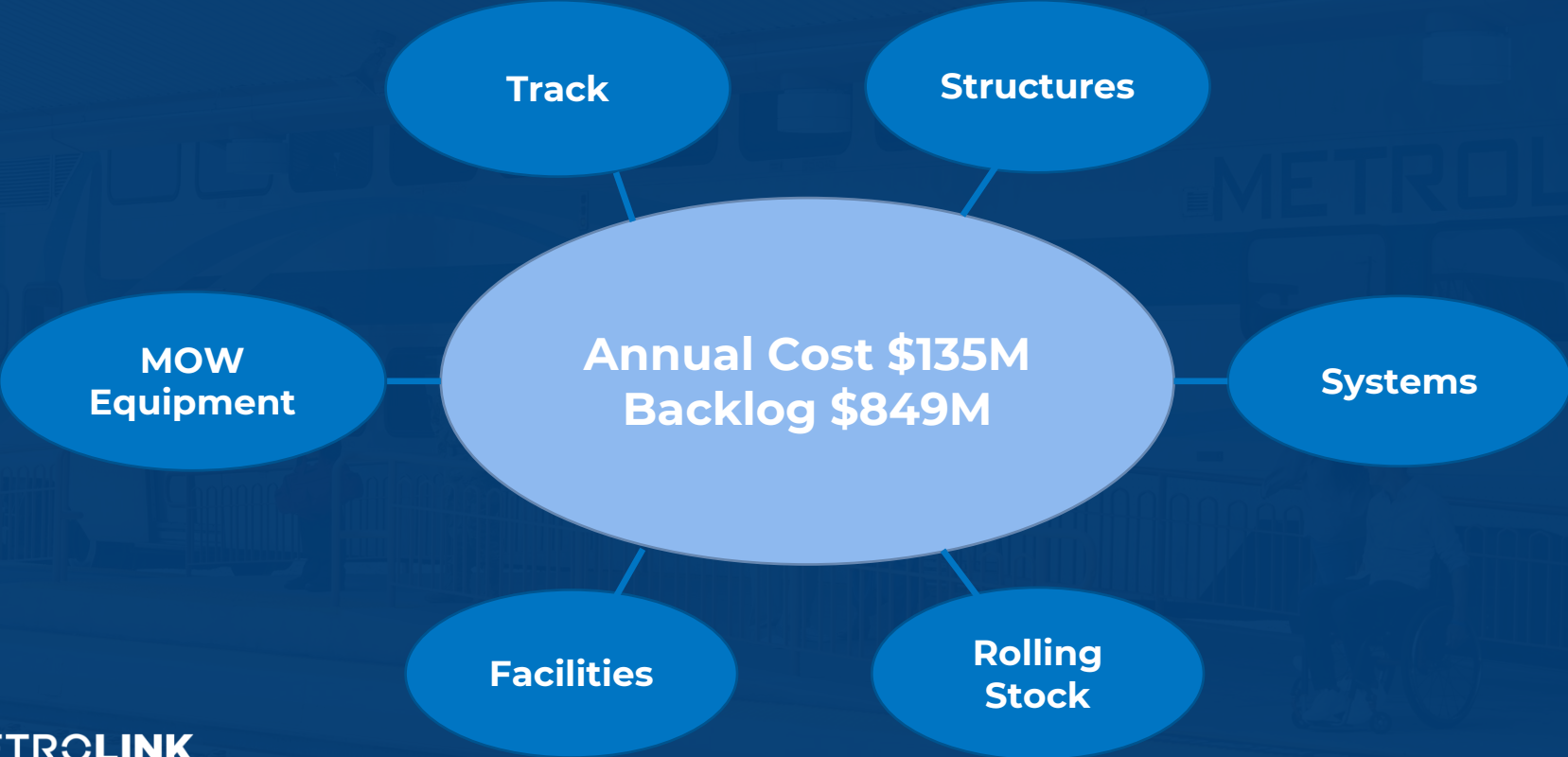
SCORE: Phase 1 Schedule



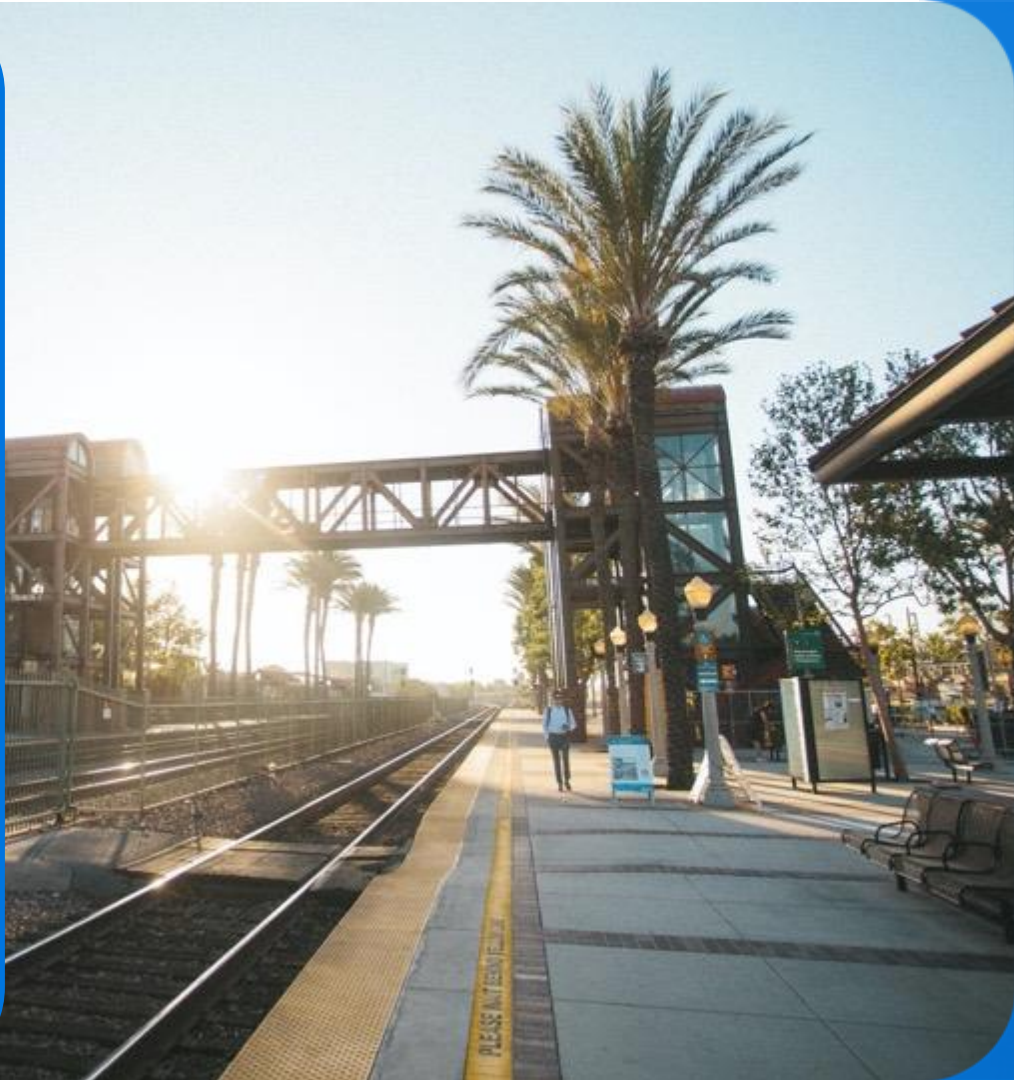
 Metrolink Early Start Projects

 Other Metrolink Projects

Rehabilitation Program



Upcoming Procurements



METROLINK



Upcoming Procurements

- SCORE Construction – Phase 1A:
 - San Bernardino Line (Bundled) - \$50M; IFB Spring 2025
 - Simi Valley - \$42M; IFB Summer 2025
 - Chatsworth - \$21M; IFB Summer 2025
 - Tyler and Cogswell Crossings - \$25M; IFB late 2025/early 2026
 - Burbank Safety Corridor Improvements - \$15M; IFB Summer 2025
- SCORE Construction – Phase 1B:
 - Lancaster Station, Balboa, Canyon – each > \$100M; IFB 2026/27

Upcoming Procurements

- Rehabilitation:
 - Pacific Surfliner Corridor State of Good Repair Project - \$25M; IFB early 2025
 - Arroyo Simi and Seco Bridges - > \$30M; IFB 2026
 - Bundled Track/Signal/Structures - \$5M; early 2026
- Third Party:
 - Brighton to Roxford (Metro) - \$110M; IFB 2026
 - South Perris Station/Layover (RCTC) - \$25M; IFB early 2025
 - Perris Valley Double Track (RCTC) - \$34M; IFB later 2025/2026



metrolinktrains.com/procurement



METROLINK

Thank you.