

Los Angeles World Airports Capital Improvement Program Update

Jake Adams
Deputy Executive Director
Landside Access Modernization Program

Emery Molnar
Deputy Executive Director
Airports Development Program

Construction Network

October 10, 2024

LAWA | LAX VNY

MULTI-BILLION CAPITAL IMPROVEMENT PROGRAM



LAWA has the industry's largest and most complex Capital Improvement Program

Major Completed or In-Service Projects

- West Gates at TBIT
- LAX Economy Parking
- Consolidated Rental Car Facility*
- Airport Police Facility
- Modernization of Terminals 1, 2/3*, 6*, 7 and 8
- Smart Parking
- Terminal Vertical Cores*
- Terminal 1.5 Program
- Taxiway D Extension (to Taxiway A)*

Major Projects Currently in Construction

- Automated People Mover
- Modernization of Terminals 4 and 5
- Power Receiving Station
- North Airfield Exit Taxiways
- South Extension to West Gates at Tom Bradley International Terminal

Planning or Design

- Reconfigured Roadway Entrances to LAX Central Terminal Area
- VNY Taxiways Program
- Auxiliary Curbs Program
- Wayfinding Enhancement
- Cargo Modernization Program
- Asset Renewal Program

*Denotes projects that have achieved substantial completion in the past 12 months.

Workforce Development & Economic Impact



**Beyond Infrastructure...
Making an Economic Impact**



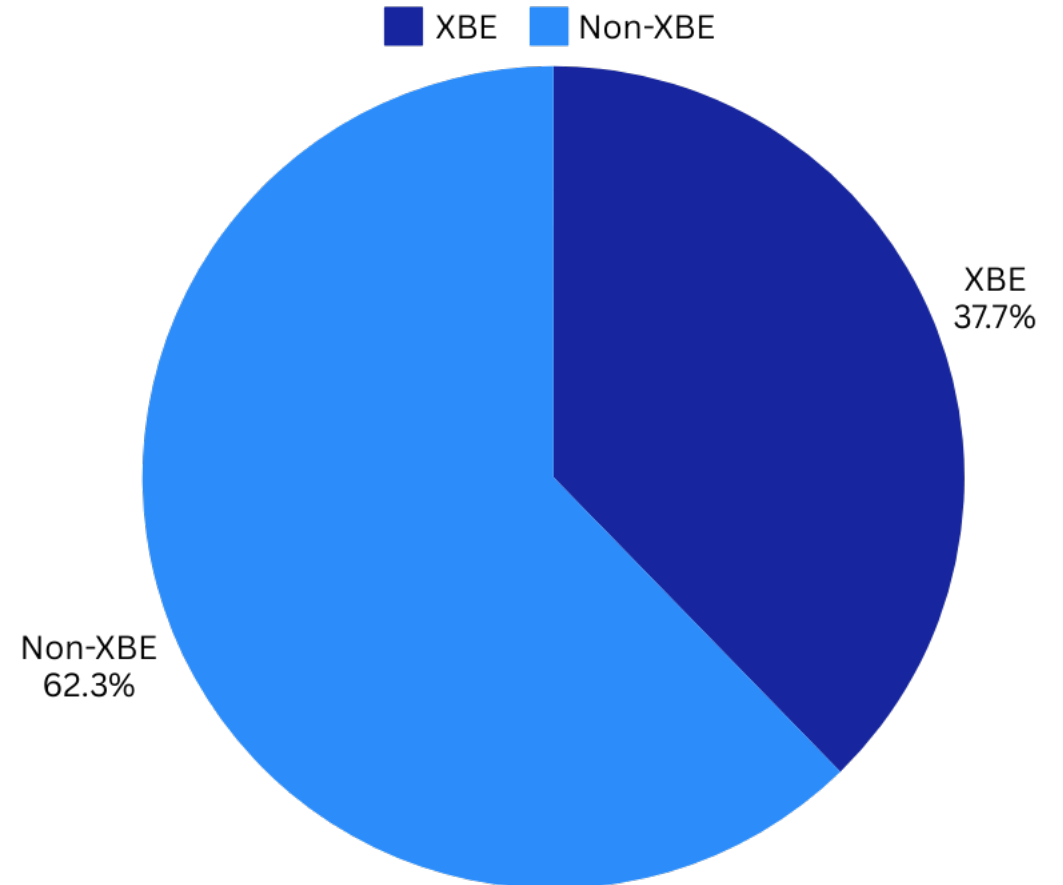
Economic Impact TDG Cumulative Performance

Total Contracts		Total Firms Paid		
130		1,553		
Total Paid				
\$7,933,119,759.26				
XBE*	# Firms	# Firms Paid	% Total Spend	Total Spend
Non-XBE	1014	770	62%	\$4,942,964,199.20
SBE	899	791	22.6%	\$1,790,496,277.82
LBE	311	289	23.5%	\$1,862,053,467.19
LSBE	227	211	11.2%	\$892,434,479.59
DVBE	91	79	4.7%	\$371,185,751.34
DBE	396	349	8.4%	\$661,165,414.36
MBE**	259	236	8.3%	\$660,011,712.95
WBE**	180	157	6.1%	\$480,556,148.80

*Firms are eligible in multiple categories
** Not for credit

10/8/2024 11:33:40 AM
Last Refresh

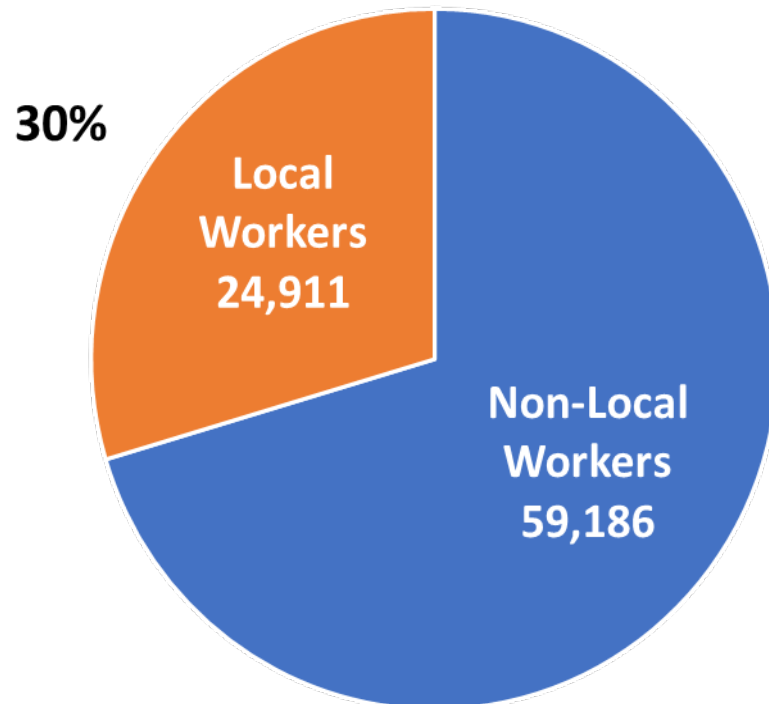
Total Paid Percentage



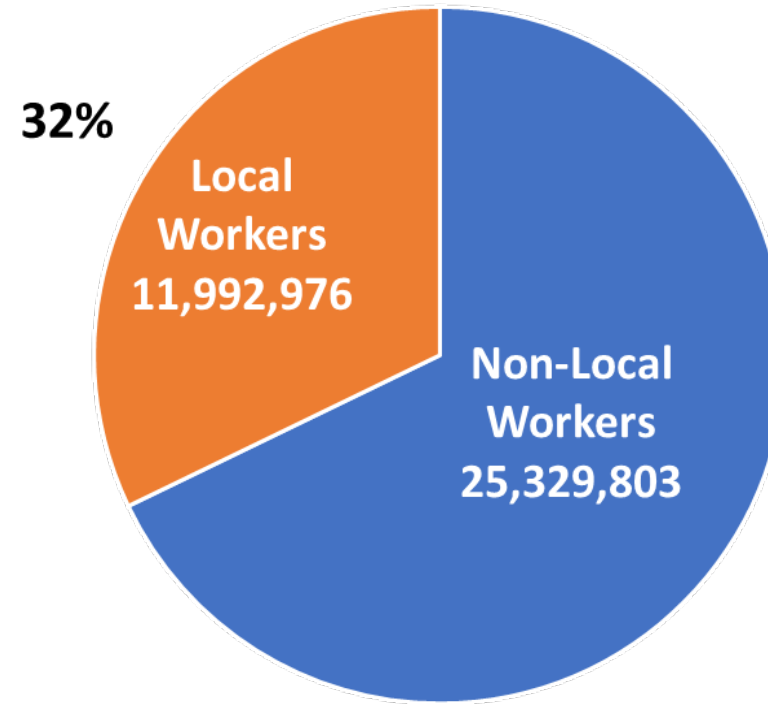
Economic Impact

CIP Quality Career Jobs

Total Workers: 84,097



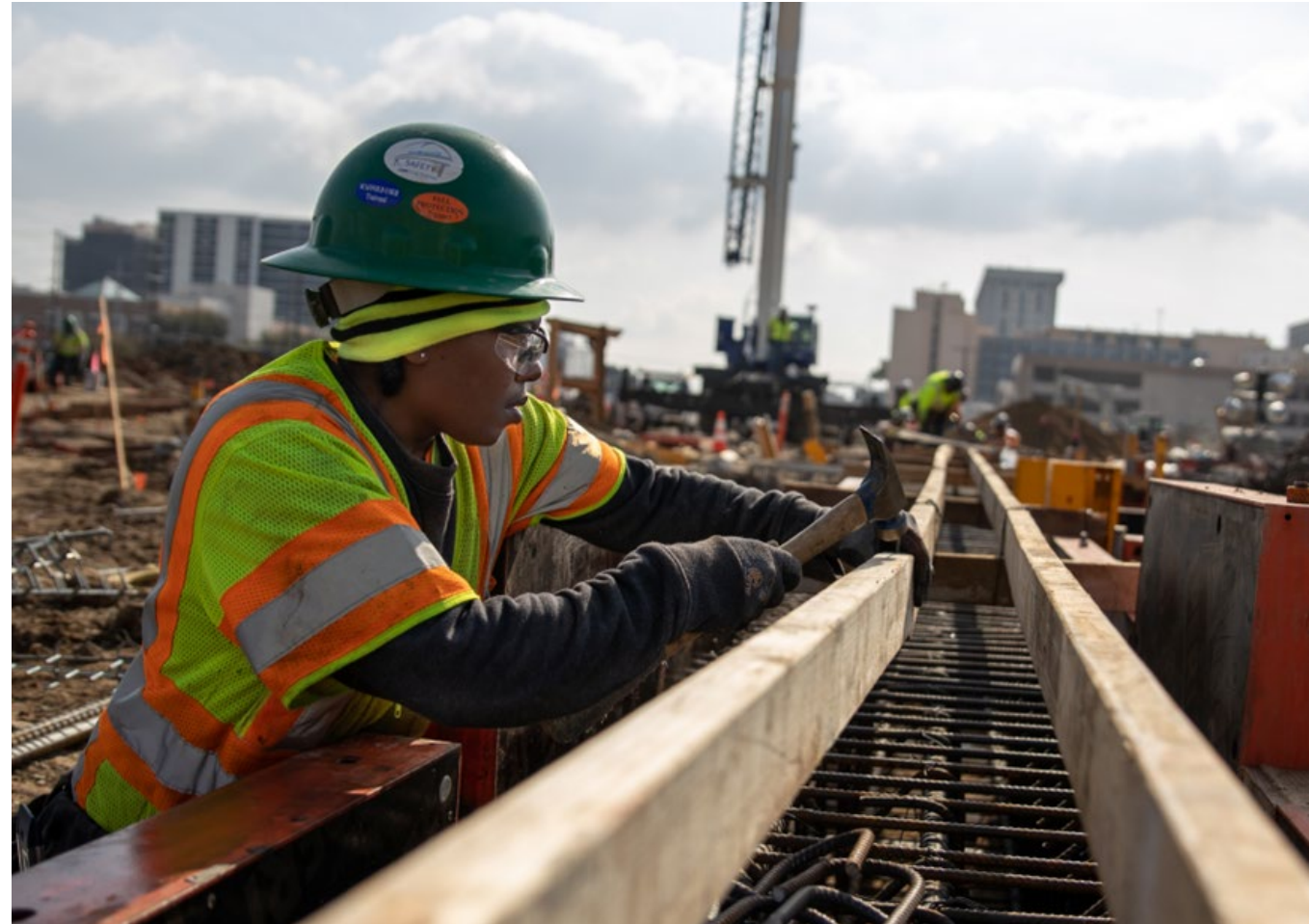
Total Hours: 37,322,779



Economic Impact

Quality Jobs & High Wages Through LAMP Projects

Total # of Workers	Total # of Local Workers
26,360	8,214
Total Hours Worked by All Workers	Total Hours Worked by Local Workers
14,077,326	4,588,124
Gross Pay + Benefits	Local Gross Pay + Benefits
\$1,010,403,109	\$304,146,587
Average Hourly Wage (w/ Benefits)	Average Local Hourly Wage (w/ Benefits)
\$71.8/HR	\$66.3/HR





ECONOMIC IMPACT

LOCAL SKILLED WORKFORCE TRANSFORMATION

TOTAL GRADUATES 425

AFRICAN AMERICAN 43%

HISPANIC 49%

WOMEN 19%

CRIMINAL JUSTICE 32%



\$19.8M

TOTAL WAGES

420,302+

TOTAL HOURS

\$47.08

AVERAGE HOURLY WAGE



LAX's New Arrival and Departure Sequence



APM



ConRAC



Economy Parking



**Roadway
Improvements**



Automated People Mover

- Length: 2.25-mile elevated guideway
- Six Stations: Three outside the Central Terminal Area and three inside
- Ride Duration: 10 minutes end to end
- Frequency of Trains: Every 2 minutes during peak hours
- Operates 24/7; 365 days
- **Anticipated Operation Start:**
Early 2026

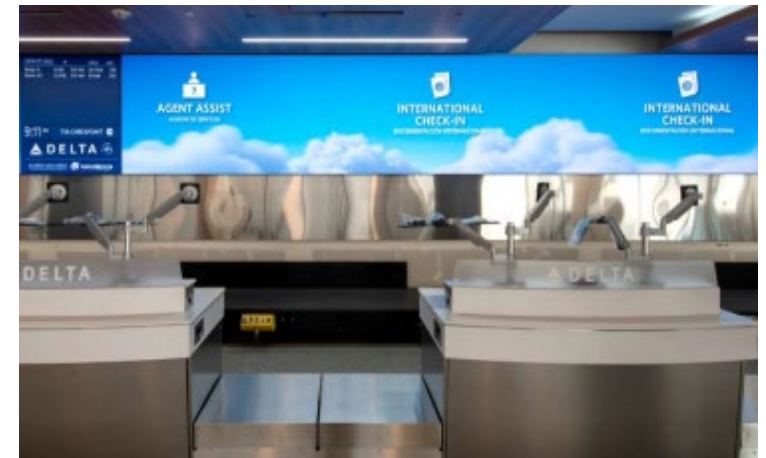
CONRAC

- LEED Gold Accredited Facility
- 6.4M sf with capacity for ~18,000 rental vehicles
- On-premise APM station eliminates + 3,200 daily shuttle trips to / from CT
- 8400 MWh solar power PV system
- 3700 employee parking spots with over 230 EV charging and 140 EV ready spots
- **Completed: in March 2024**



Terminal 2/3 Modernization

- Modernization of two terminals, a new check-lobby, added gates, automated checkpoint, and direct connections to APM station
- Adds secure connection between Terminals 2/3 and Tom Bradley International Terminal
- **Main Terminal Complete:**
September 2024

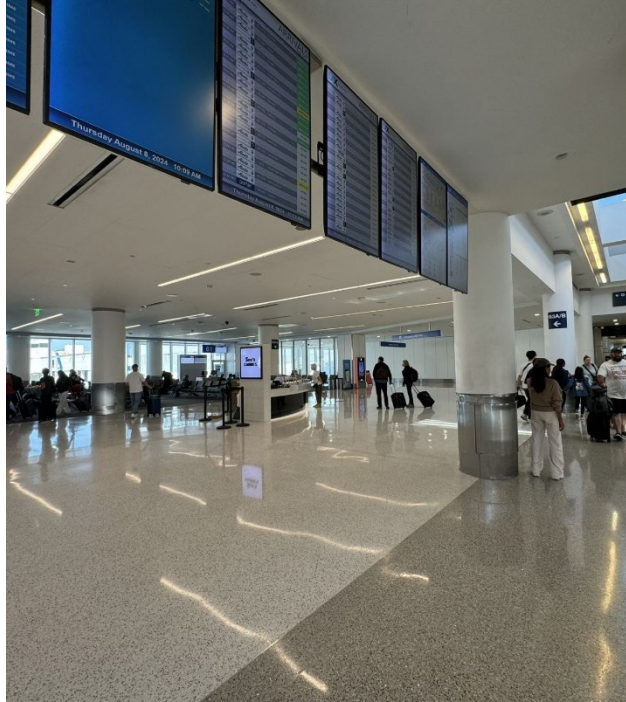




Terminal 4/5 Modernization

- Complete Renewal of Terminal 4
- Refurbishment of Terminal 5
- Development of central "head house" and direct connection to APM station
- Regauging gates for added operational flexibility
- **Anticipated completion: Early 2028**





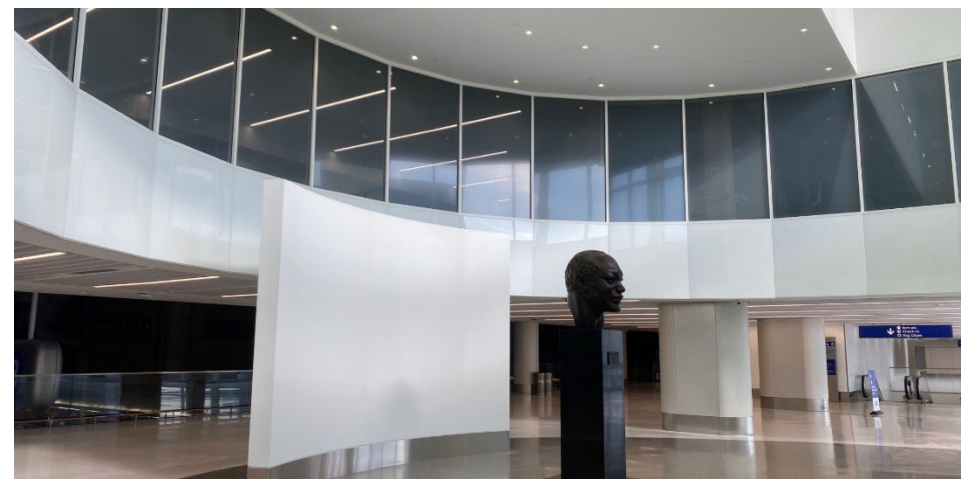
Terminal 6 Modernization

- Upgrade of all gate/lounge areas, automated security screening checkpoint
- Includes repaved apron, new fuel lines, and other airfield infrastructure
- Direct connection to APM station
- **Upgraded terminal now in passenger service**



Terminal Vertical Cores & APM Interfaces

- Creates direct connection between the terminals and the APM stations
- Seven new Terminal Cores provide passengers with multi-level travel options via escalators, elevators and stairs.
- Links passengers to concessions, baggage, restrooms, lounges and other amenities that bring LAX's guests convenience and ease.
- **Completed:** April 2024



Intermodal Transportation Facility Auxiliary Curbs



- Adds 7,300 feet of new curb-front at off-airport APM stations to provide passenger pickup/drop-off areas without the need to drive into the terminal area
- Includes canopies, an Art Wall, technology upgrades, and roadway and drainage improvements
- **Anticipated Completion:** Early 2026

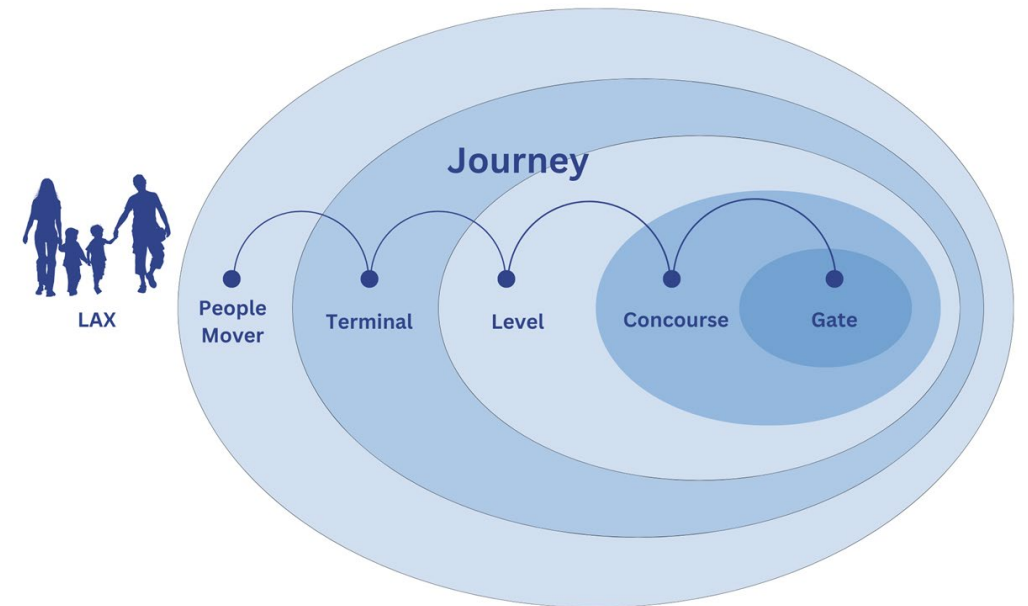
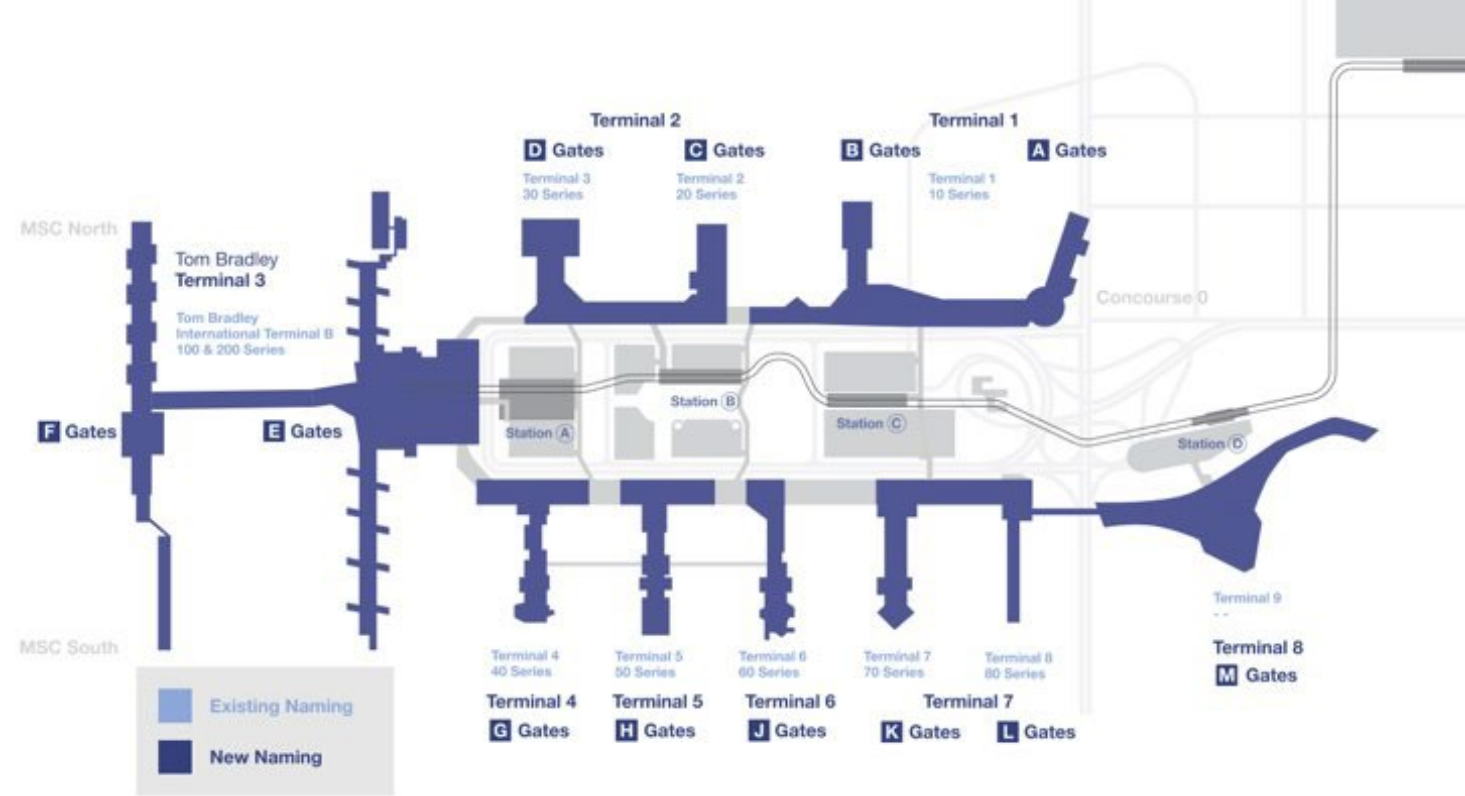


Wayfinding

Overview

- Comprehensive new signage & wayfinding improvements throughout LAX, thereby creating an intuitive guest experience navigating to & through the LAX Campus.
- Includes all facets of the journey:
 - Virtual gateways
 - APM and associated facilities
 - Roadways
 - Parking
 - Curbside
 - Terminals
 - Concessions
 - Gates
- Includes the development of an airport-wide implementation and prioritization plan for all signage upgrades

Phased Completion: Mid-2027
(before the 2028 Olympics)

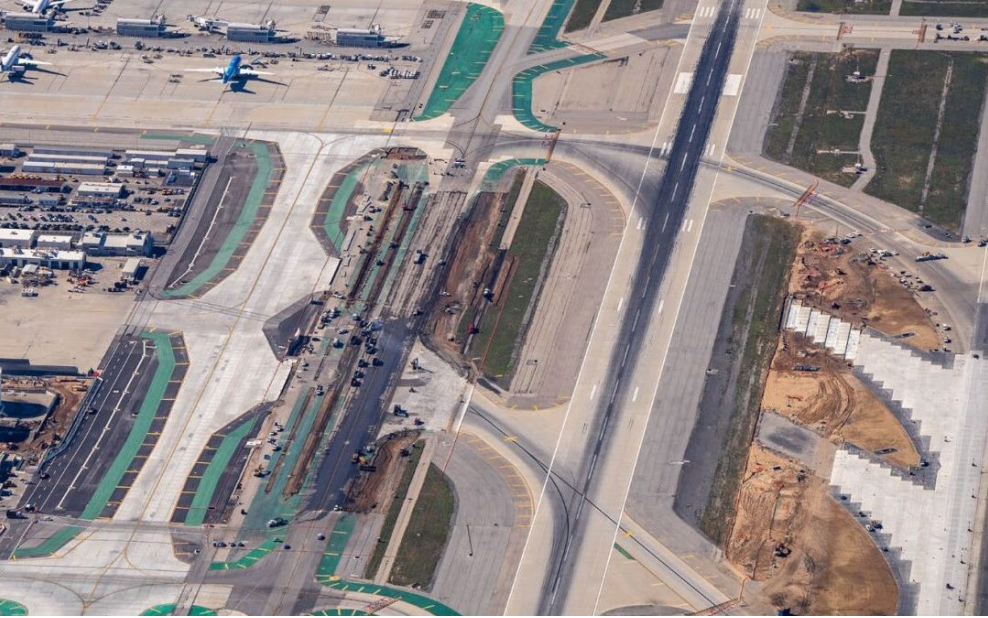




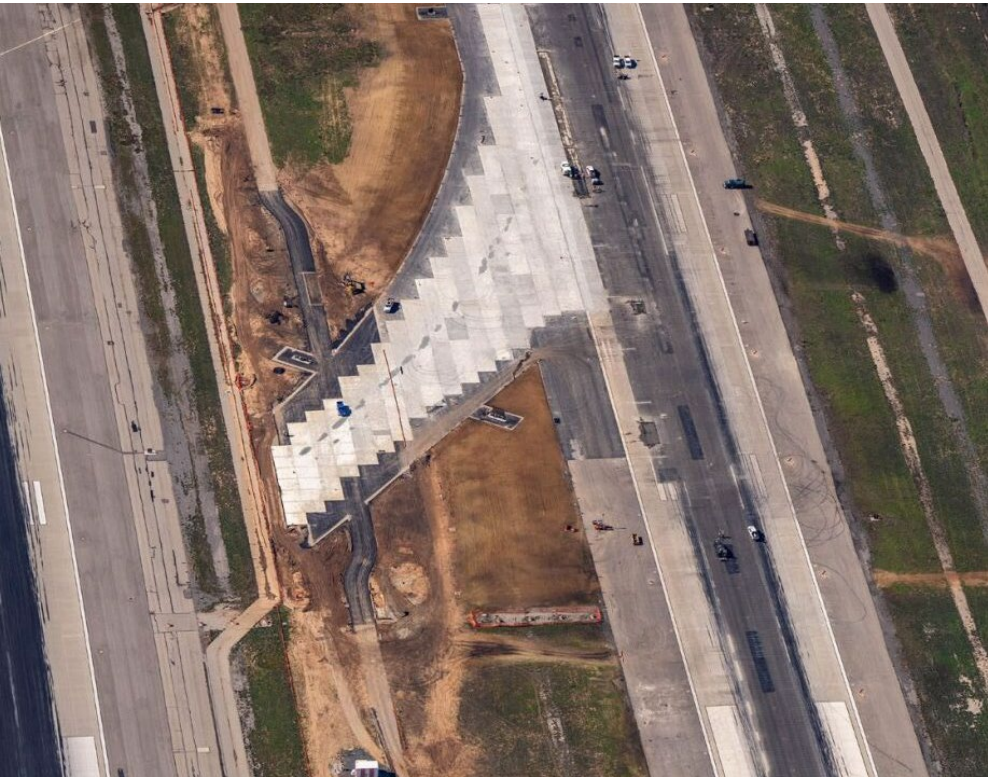
ATMP Roadway Improvements



- Reconfiguration of vehicle access to CTA to reduce congestion and impact on surrounding streets
- Improves access to Economy Parking structure and APM stations
- Currently in design
- **Anticipated Completion:** Majority of Project Scope Before the 2028 Olympics



Runway and Taxiways Improvements



- Replaces existing runway exit taxiways for improved safety and compliance with current FAA standards
- Rebuilds key areas of both North Airfield runways to extend their operating life
- **Taxiway D Completion:** June 2024
- **North Airfield Exit Taxiways & Runway Anticipated Completion:** November 2024

Midfield Satellite Concourse (MSC) South



- An extension to West Gates at TBIT
- The MSC South is a domestic concourse designed to serve around 100 to 220 passengers per gate
- Employ New Construction Technology that will result in construction time savings
- Off-Site Construction and Relocate (OCR) and AOA Site
- Completion: End of 2025

MSC-S Scope of Work



- Approximately 150,000sf total
- 2 stories (No basement)
- 9 Building segments at OCR
- The key architectural feature - the “brise-soleil” façade

• Pre-move

- Apron Work
- Building Segments – Structure, MEP/F and finishes

• Post Move

- Apron Floor fit-out
- Passenger Boarding Bridges (PBB)
- Finishes
- Commissioning

Offsite Construction & Relocation (OCR) Method



- Steel structure modular building design
- Constructed in nine segments
- 9 segments currently constructed at an off-site construction yard at the northwestern area of the campus.
- Segments are to be transported to the project's final site location south of West Gates at TBIT in the middle of the airfield.
- Scheduled Move:
 - Start: October 2024
 - Complete: November 2024

Cargo Modernization Program

Overview:

- 8th Busiest Cargo Hub in the world, over 2.9M tons in 2021
- 3 Cargo Areas covering totaling 261 acres of land
- 26 Existing Buildings totaling 2.4M Square Feet of Floor Area
- Avg. age is 38 years - Heights and configurations are not optimal for storage & handling efficiency

LAWA seeks to transform LAX's cargo facilities into a state-of-the-art operation

- Optimize land use
- Co-locate compatible facilities
- Improve handling capacity and efficiency
- Incorporate innovation & advanced technology
- Improve truck staging
- Promote sustainable practices
- Increase airport revenues
- Create Positive Economic Impact



Conceptual Rendering (*subject to change*)



THANK YOU!

LAWA | **LAX VNY**

