



CONSTRUCTION NETWORK
Connecting Owners to AEC and CM Industries

TK-12

Los Angeles and Orange County

*Bond Programs,
Projects & Contracting Opportunities*

10/22/24

Santa Ana Unified School District

Ted Walstrom

Assistant Superintendent, Facilities Governmental Relations

Irvine Unified School District

Kelvin Okino

Executive Director, Facilities Planning and Construction

Santa Monica-Malibu Unified School District

Carey Upton

Chief Operations Officer

Fullerton Joint Union High School District

Vince Madsen

Director of Facilities

Whittier Union High District

Steven Rodriguez

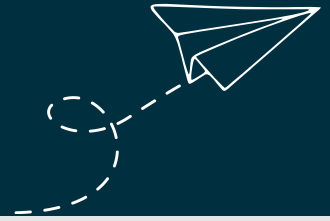
Director of Business Operations

Corona-Norco Unified School District

John Vondriska

Administrative Director, Facilities & Support Services

Capital Improvement PROJECTS



MEASURE GG

On November 4, 2014, the voters of the Corona-Norco Unified School District authorized Measure GG under the Proposition 39 statutes. Measure GG authorized the issuance of \$396 million in General Obligation Bonds. Per the ballot language, the net proceeds of the Bonds are intended to be used to upgrade classrooms, labs and technology; repair roofs, floors and plumbing; repair, construct, acquire and equip classrooms; and improve school safety and security.



MODERNIZATIONS

- Adams Elementary
- Garretson Elementary
- Jefferson Elementary
- Lincoln Fundamental Elementary
- Roosevelt High
- Norco Elementary
- Norco Intermediate
- Corona Fundamental Intermediate
- Washington Elementary
- Corona High ASB & Library

NEW SCHOOLS

- eSTEM Academy
- Phillistine Rondo School of Discovery

ROOFING

- 7 School Sites
- District Facilities

SECURITY CAMERAS

- 51 School Sites
- District Facilities

SECURITY FENCING

- 27 School Sites

CURRENT & UPCOMING PROJECTS

Current projects that may be going out for bid in the next 12-18 months include:

Corona High School Classroom Replacement/Modernization Project: \$32.9 million dollar project and will replace old modular building with a new classroom building. Other campus improvements and ADA and POT improvements will be determined as the project moves through the DSA process.

Norco High School Auxiliary Gym/Gym Modernization Project: \$40 million dollar project to build a auxiliary gym and modernize the current gym on site. Other site work may include POT and ADA compliance as well as minor improvements to other sports related facilities on campus.

Stallings Elementary School: \$5 million dollar project to improve the school cafeteria and food services area. Other site work may include POT and ADA compliance as needed.

For questions on how to become a Pre-Qualified Contractor visit the District's website:

https://www.cnusd.k12.ca.us/our_departments/business_services/purchasing/vendor_registration/

For further questions on future project you can contact John C Vondrisk, Admin Director of Facilities and Support Services for CNUSD at jvondrisk@cnusd.k12.ca.us

DISTRICT...

ONE OF FOUR SCHOOL DISTRICTS SERVING THE CITY OF IRVINE

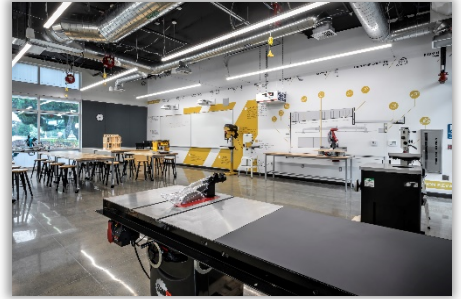
ESTABLISHED IN 1972 | 14 NEW SCHOOLS IN LAST 20 YEARS

45 SCHOOL SITES

- 24 Elementary Schools
- 5 K-8 Schools
- 6 Middle Schools
- 5 High Schools
- 1 Alternative High School
- 1 Early Childhood Learning Center
- 1 Adult Transition Program
- 2 Charter Schools
- 2 Virtual Academies | 1 Adult School

STUDENT ENROLLMENT | GROWTH

- 38,000+ students (2024)
- Top Medical Research Community
- Regional Housing Needs Assessment (RHNA)
- Major Developers: The Irvine Co. and FivePoint



Creekside High School



Stone Creek Elementary School

BOND MEASURE FACTS...

SCHOOLS FACILITIES IMPROVEMENT DISTRICT (SFID)

- Measure "E" passed June 7, 2016
- \$319.0 million (sold \$241.0 million to date)
- 28 of 45 school sites within SFID

PROJECTS UNDER CONSTRUCTION...

- Measure E
 - Irvine HS New Performing Arts Center
 - Culverdale ES New MPR/Innov. Lab
 - Greentree ES New MPR/Innov. Lab
 - Santiago Hills ES New MPR/Innov. Lab
- Districtwide
 - Portola HS Classroom Expansion
 - Eastwood ES Classroom Expansion
 - Nutrition Services Classroom Expansion



Bonita Canyon Elementary School



Portola High School

PROJECTS IN DESIGN...

- Measure E
 - University HS Performing Arts Improvements
 - Northwood HS New Practice Gym
 - Lakeside MS New MPR/Music
 - College Park ES New Nutrition Services
 - Venado MS MPR Improvements
- Districtwide
 - Sierra Vista MS MPR Expansion
 - Beacon Park School Classroom Expansion
 - Cadence Park School Classroom Expansion
 - Canyon View ES Classroom Expansion
 - Oak Creek ES Classroom Expansion
 - Stonegate ES Classroom Expansion



Woodbridge High School



Solis Park School

PROJECTS IN PLANNING...

- Measure E
 - Woodbridge HS Modernization
 - Sierra Vista MS Expansion
 - College Park ES Expansion
 - Eastshore ES Expansion
 - Stone Creek ES Expansion
 - Turtle Rock ES Expansion
 - Westpark ES Expansion
- Districtwide
 - School Modernizations
 - School Expansions
 - Facilities Master Plan Update



Loma Ridge Elementary School



Brywood Elementary School

FACILITIES PLANNING DEPT and CONSTRUCTION SERVICES DEPT...

- TWO SEPARATE DEPARTMENTS – TOTAL FIFTEEN STAFF
 - CONTACT: Kelvin Okino, Executive Director
Email: kelvinokino@iusd.org | Phone (949) 936-5305
- DEPARTMENT RESPONSIBILITIES INCLUDE
 - Enrollment Projections
 - Facilities Planning and Design Phase Management
 - Construction Phase Oversight (Procurement: CM Multiple Prime)
 - Facilities Site Improvements



WHITTIER UNION HIGH SCHOOL DISTRICT

Facilities Update

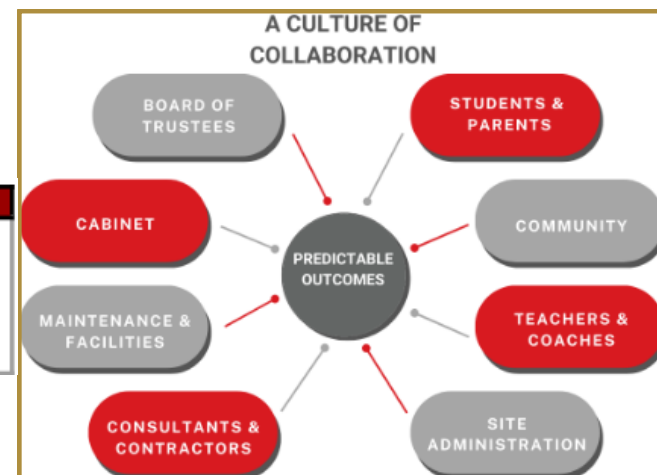


Project Goals

- Deliver a product that matches the need
- Create a space that is in demand
- Provide a space that our students are proud of
- Demonstrate the concept of other people
- Inspire confidence in our systems



Read More on our website: www.wuhsd.org



Architect Pool:

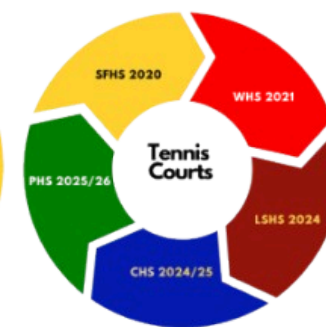
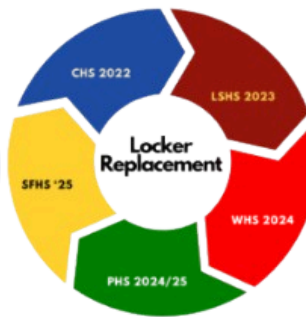
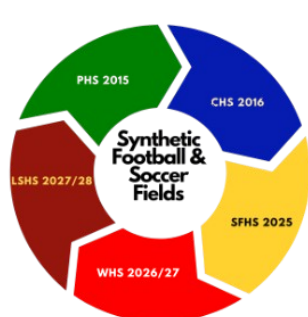


studio+

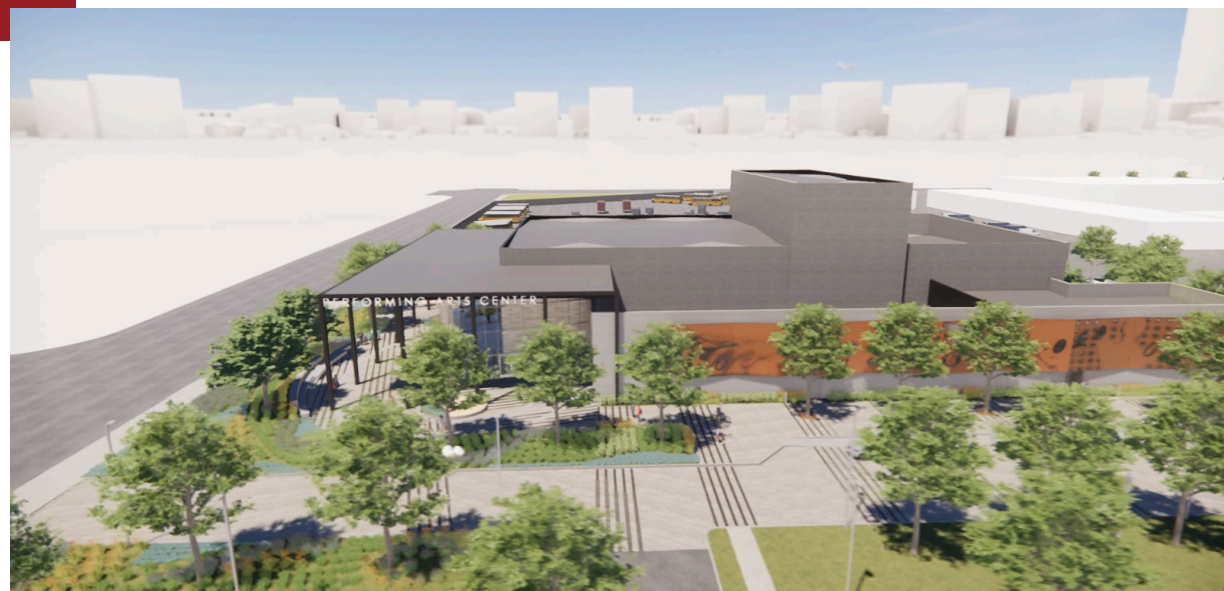
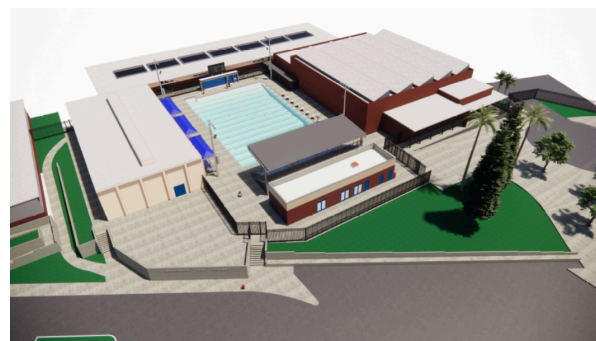
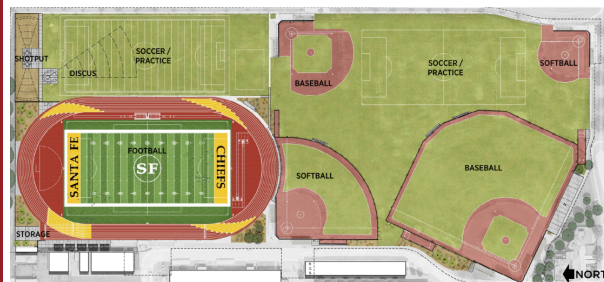
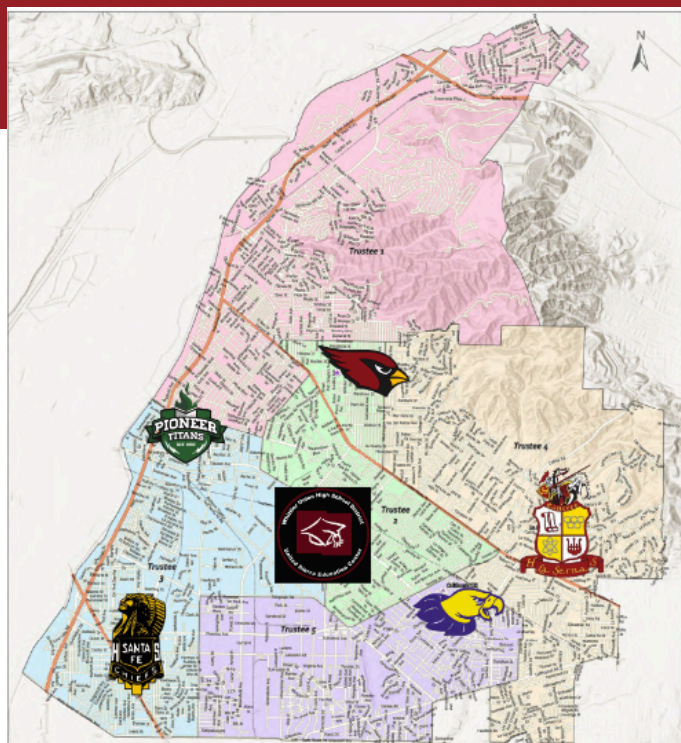


Whittier Union: A Work in Progress

The Whittier Union High School community passed its third consecutive bond measure victory with the passage of Measure AA in 2020, securing \$183.5 million in funding for essential campus improvements. This comprehensive bond program prioritizes critical infrastructure upgrades across the District, including necessary roofing repairs and pool replacements at various sites. A cornerstone project of the measure is the construction of a new 30,000 sq. foot, 450-seat performing arts center, demonstrating the district's commitment to both maintaining basic facilities and enhancing educational opportunities for students in the arts. The measure represents a continued investment in the district's facilities, building upon the success of their previous bond campaigns.



The Whittier Union High School District (WUHS), established in 1900, serves communities approximately 10 miles southeast of downtown Los Angeles, spanning 41.65 square miles of southeastern Los Angeles County. The district operates a diverse network of educational institutions, including five comprehensive high schools, a continuation school, an alternative studies program, and an adult school, collectively serving the greater Whittier area. This well-established district has been a cornerstone of secondary education in the region for over 120 years, providing a wide range of academic opportunities to meet the varied needs of its student population. Guided by its vision to "provide all students with an engaging, quality, standards-driven instructional program delivered by a well-trained staff resulting in improved student achievement," WUHS demonstrates its commitment to educational excellence and student success through comprehensive academic programming and a commitment to first-class facilities.





SANTA MONICA - MALIBU UNIFIED SCHOOL DISTRICT

CAREY UPTON

CHIEF OPERATIONS OFFICER

310-450-8338 x79383

cupton@smmusd.org

October 21, 2024

Santa Monica – Malibu Unified School District

16 schools - 8900 students

Infant to TK-12 to Adult Ed

Two cities, 32 miles connected by the ocean

PREVIOUS BOND MEASURES

Measure SMS – School Facility Improvement District #1 – Santa Monica –
\$485M – passed in 2018 – 72% vote

Measure M – School Facility Improvement District #2 – Malibu –
\$195M – passed in 2018 – 71% vote

CURRENT PROJECTS IN CONSTRUCTION

Santa Monica High School – Phase 3 – Exploration Building – CTE & Media/visual Arts
Gold Gymnasium

HED/MRY Kitchell/Element McCarthy Contractor
\$120M hard/\$160M total 95% complete – opened in Aug 2024

Malibu High School – Phase 1 – New High School Building

NAC/KEA Element CW Driver

\$100M hard/ \$140M total 55% complete – scheduled to open Jan. 2025, poss. Aug. 2024

John Adams Middle School – Library Modernization

Berliner Simpson & Simpson Zone 26

\$4M total 80% complete – scheduled open Jan. 2025

Ocean Park Neighborhood School – Water Intrusion Modernization

DTR CCM Blach Construction

\$46M total 40% complete – scheduled open Aug. 2025

Will Rogers Elementary School – Early Childhood Building & Field Replacement

Johnson Favaro Simpson & Simpson Balfour Beatty

\$26M total 50% complete – scheduled open Aug. 2025

McKinley Elementary School – New Classroom & Admin Building

Johnson Favaro – Cumming – Balfour Beatty

\$35M total 10% complete – scheduled open Jan. 2026

SANTA MONICA-MALIBU UNIFIED SCHOOL DISTRICT

1717 4th Street • Santa Monica • California 90401 • (310) 450-8338 • www.smmusd.org

Board of Education: • Alicia Mignano • Jon Kean • Maria Leon-Vazquez
Laurie Lieberman • Jennifer Smith • Dr. Richard Tahvildaran-Jesswein; Stacy Rouse

Superintendent: Dr. Antonio Shelton

BOND MEASURES ON NOVEMBER 5th BALLOT

Measure QS – School Facility Improvement District #1 – Santa Monica – \$495M

Measure MM – School Facility Improvement District #2 – Malibu – \$395M

PROJECTS PREPARING TO START – if Bond Measures Pass

Grant Elementary School – TK & Library Modernization

Johnson Favaro ??? Erikson Hall

\$12M hard/\$19.2M total Construction begins December 2024

Grant Elementary School – New Classroom Building

Johnson Favaro ??? Erikson Hall

\$27M hard/\$43.2M total Construction begins June 2025

Roosevelt Elementary School – New Early Childhood Classroom and Library Building

DSK ??? CW Driver

\$30M hard/\$48M total Construction begins June 2025

Lincoln Middle School – STEM Modernization

Architecture for Education ??? Erikson Hall

\$18M hard/\$28.8M total Construction begins June 2025

John Adams Middle School – New STEM Building

NAC ??? Bernards

\$30M hard/\$49.2M total Construction begins June 2025

Ocean Park Neighborhood School – Main Office & Innovation Lab Modernization

DTR CCM Blach Construction

\$10M hard/ \$16M total Construction begins Nov. 2024

Franklin Elementary School – New Early Childhood Classroom Building, Field & Parking

DSK ??? ???

\$30M hard/\$48M total Construction begins June 2026

Santa Monica High School – Phase 4A - New Student Services & Black Box Theater Building

LPA ??? ???

\$30M hard/\$48M total Construction begins June 2026

Malibu High School – Phase 2 – New Middle School Building, Gym, Aquatics Center

LPA ??? ???

\$85.5M hard/ \$155M total Construction begins June 2025

CURRENT PROCUREMENT

Construction Management on above projects

RFQ/P on the street

LLB Construction on Franklin & Malibu HS project

RFP on the street

LLB Construction on Santa Monica High School

RFP will be issued in the spring.

