



# WRCOG Transportation Projects – TUMF

# Established in 2003

- Transportation Uniform Mitigation Fee
- Collected and reimbursed \$1 Billion for Transportation Improvement
- Over 150 projects completed
- \$92 Million in Regional Transit Enhancements
- \$43 Million in Open Space Preservation







# How the Program Works

- WRCOG collects \$70 - 80M per year through TUMF fees
- TUMF fees assessed only on new development
- New development increases congestion
- Growth in WRCOG Region has increased year to year since pandemic
- Funds are passed on to WRCOG agencies to use on road improvements to improve congestion





# How to allocate funds?

- Agencies request funding allocations
- 5-year funding plan for the TUMF funds
- \$250M+ in committed funding over 5 years



# **Recent Projects Completed**







**Moreno Valley: SR-60 Moreno Beach Interchange – \$25M TUMF (\$41M – Total)**



- Menifee: Holland Rd Bridge over I-215 – \$11M (\$28M)







- Eastvale/Norco: Hamner Ave Bridge over Santa Ana River – \$11M (\$71M)





- Eastvale: Limonite Bridge Gap Closure— \$9.5M (\$24M)







- Temecula: I-15 Auxiliary Lane – \$3.5M



# ***Upcoming Projects***



- Murrieta: I-215/Keller Interchange – \$8M Allocated (\$47M Estimate)



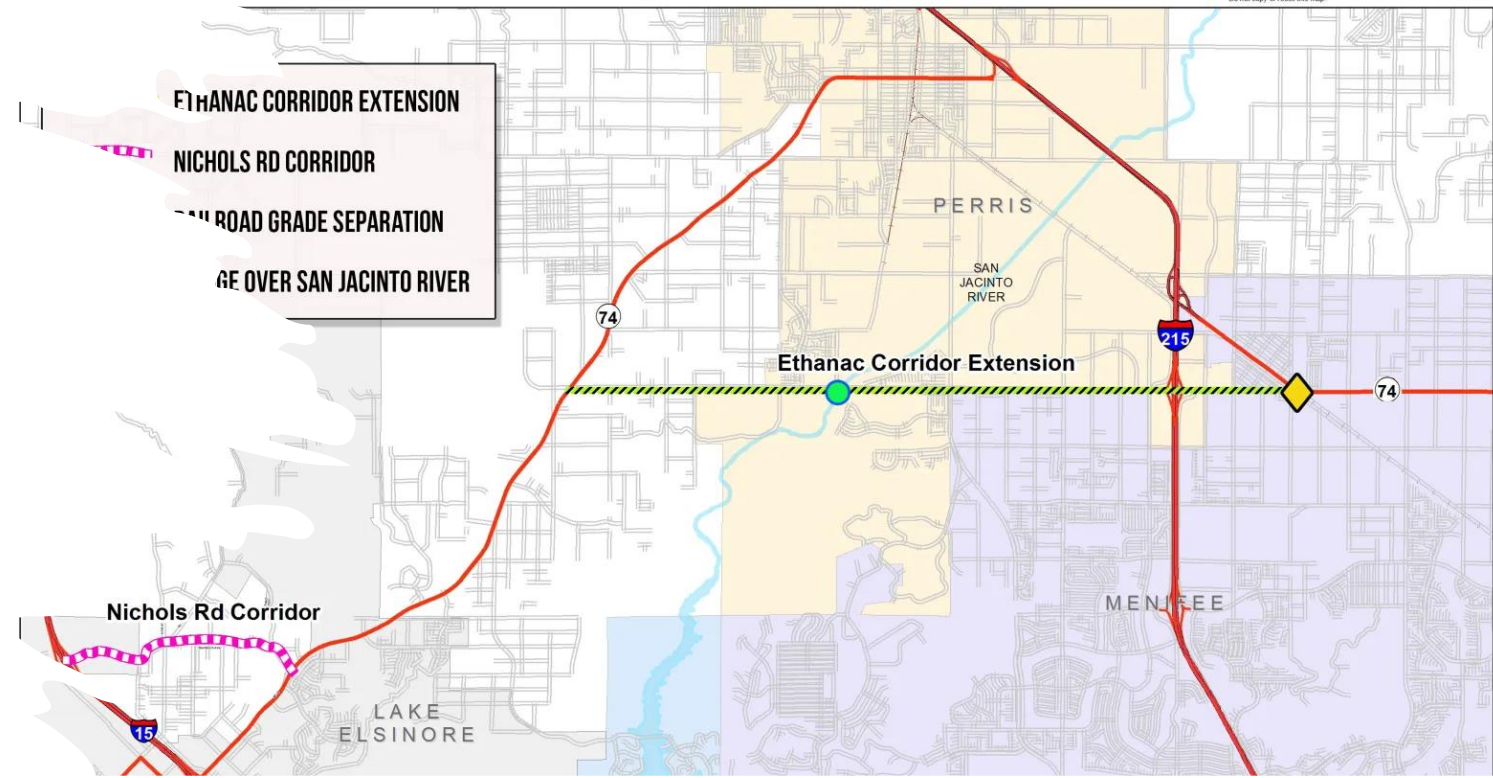


- Riverside: Third St Grade Separation – \$11M (\$59M)





- Perris: Ethanac Ave Bridge – \$16M (\$22M)





- Winchester/French Valley: SR-79 Realignment – \$35M (\$220M)



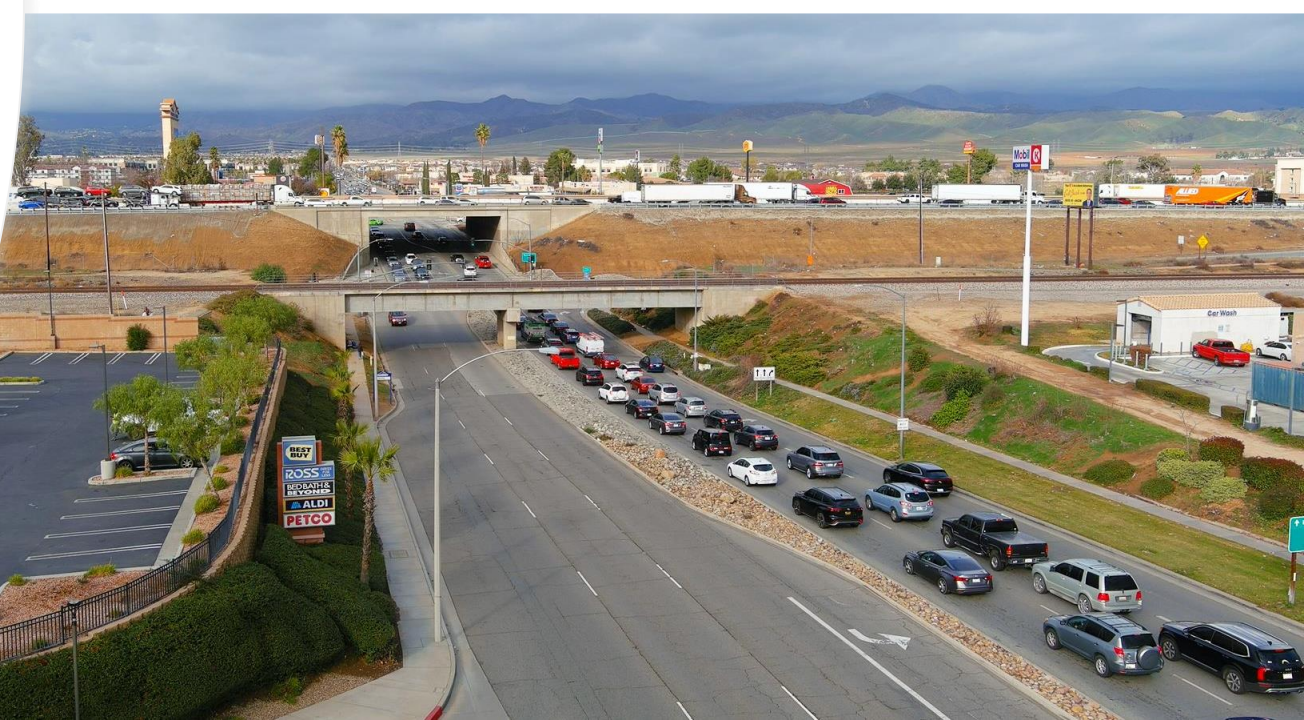




- Beaumont: SR-60/Potrero Interchange — \$14M (\$62M)



- Banning: SR-60 Highland Springs Interchange  
– \$3.5M (\$46M)







- Temecula: I-15 French Valley Interchange Improvements – \$37M (\$138M)







# Projects through the years

- Lake Elsinore: I-15/Railroad Canyon Interchange – \$50M (\$50M)
- Corona: Foothill Parkway (California to Teddy Bear Lane) - \$20M (\$34M)
- Temecula: I-15/SR-79 Interchange - \$18M (\$50M)
- Moreno Valley: SR-60/Nason St Interchange - \$16M (\$55M)
- Menifee: I-215/Scott Rd Interchange - \$14M (\$58M)
- Murrieta: I-15/California Oaks Interchange - \$11M (\$30M)
- San Jacinto: Ramona Expressway Widening (Sanderson to Eagle) - \$9M (\$9M)
- Canyon Lake: Railroad Canyon Widening (Goetz to City Limits) - \$7M (\$8M)
- Riverside: Vine St Mobility Hub - \$5M (\$16M)
- Perris: Perris Transit Center – \$2M (\$5.4M)





Photo: Aerial Interchange  
Perris, California  
Photo Date: January 30, 2022  
Photo by: viewmaging.com  
951.608.2244



- Relieving Congestion in Western Riverside County since 2003