

## MASTER PLAN

Cal State LA is soliciting development of a comprehensive new campus facilities plan to provide strategic guidance for campus development and decision-making

### Key Outcomes:

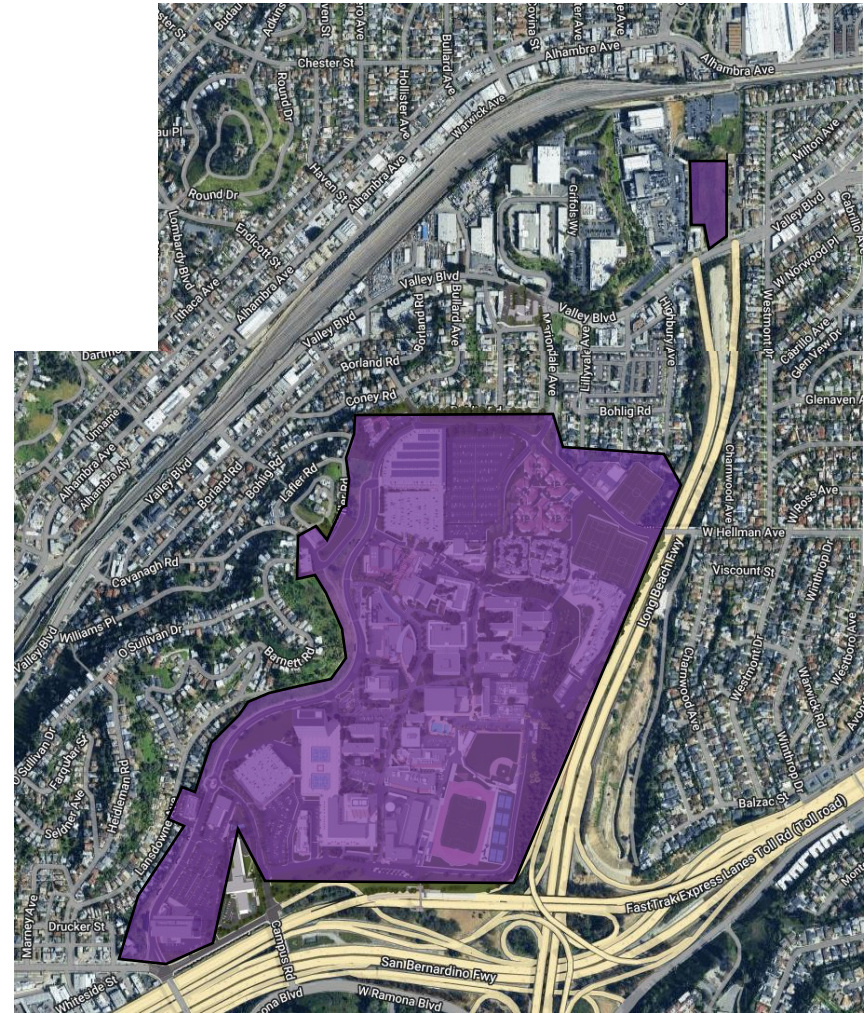
1. Space optimization analysis to understand how current campus building portfolio can better serve academic mission
2. Land use plan - detailed land use plan that outlines the proposed locations for new buildings, open spaces, and infrastructure improvements.
3. Transportation planning – Mobility, parking, and circulation plan including transportation demand management planning
4. Infrastructure/Utilities Master Plan
5. Sustainability Planning

### Schedule:

Readiness Assessment: March – May 2025

Request for Proposals: May – July 2025

Master Plan Contract: August 2025



## FACULTY/STAFF HOUSING

Cal State LA is reviewing the development of Faculty / Staff Housing to support recruitment and retention.

The proposed site is the existing West Village Student Housing Phase-I constructed for the 1984 LA Olympics.

### Scope of work and options:

- New roof
- Interior Finishes & Lighting Kitchen, and Restroom Renovation
- Upgrade Network Cabling: \$500K
- Opt: Kitchen Remodel
- Opt: Restroom Remodel
- Opt: Replace Ext. Windows & Doors
- Opt: Washer / Dryer in Unit





## CAPITAL OUTLAY

### Roofing Projects - \$6M

- Library North, South & Bridge
- Fine Arts
- Engineering & Technology Bldg.

### Waterproofing / Storm Drain - \$8M

- Parking Structure A & D Water Intrusion
- Greenlee Plaza Waterproofing

### Data Center Replacement Project - \$14M

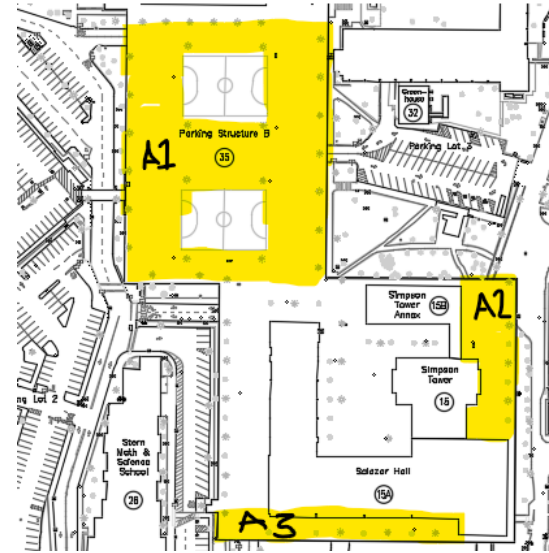
- Relocate existing data center & campus network demarcation room in Administration Bldg.
- Construct (2) Data Ctr and new & relocated fiber campuswide.

### Music Building - \$350K

- Design Choral & Band Room Acoustic

### Job Order Contract - \$3M

### Greenlee Plaza Waterproofing



### Music Building Acoustical Band & Choral

