



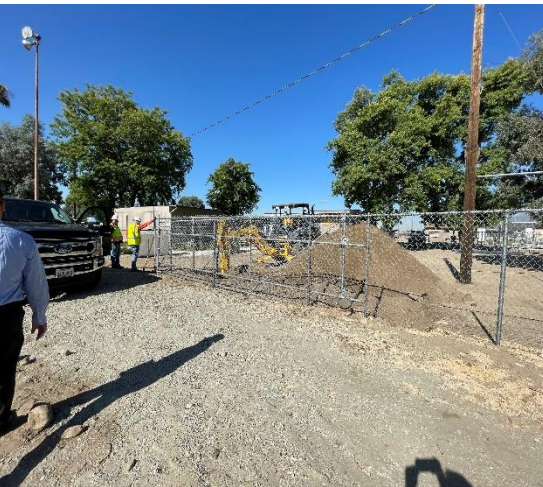
## Public Works

**Noel Mondragon, M.S., PE,**  
*Division Manager – Project Management Division*



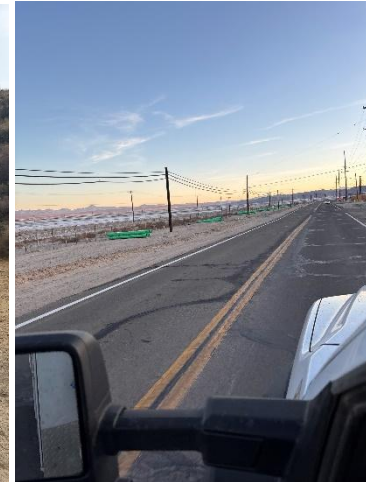
# SPECIAL DISTRICTS OVERVIEW

- The Special Districts Division provides oversight to approximately 100 dependent special districts, under governance by the San Bernardino County Board of Supervisors.
- Services include road construction and maintenance, water and sanitation districts, television, streetlight, dam, detention basin, and park districts.



# SPECIAL DISTRICTS FORMATION

- Special Districts staff work with the property owners:
  - Create the special districts. Property owners fund and vote for these districts to be formed.
  - Sell public tax-exempt bonds. Bonds are used to finance some of the Special Districts' projects.



# SPECIAL DISTRICTS TEAM STRUCTURE

## Special Districts Teams

- Water and Sanitation
- Project Management
- Operations (Roads & Parks)
- ISD Services
- HR Business Support
- Finance

## Project Management Team

### Project Managers

- Projects Planning & Design (Hire Consultants)
- Contracts Administration
- Monitoring & Control

### Construction Inspectors

- Inspections
- Support design & specs reviews
- Respond to residents' requests

### Staff Analyst II

- RFPs
- Support Management with letters and responses to PRAs

### Engineering Tech III

- Provide development services

# SPECIAL DISTRICTS PROJECT LIFE CYCLE

- Department/Division
  - Project need is identified, and scope of work and cost estimate is developed.
  - Funding source is identified.
  - Project is assigned to the Project Management Team.
- Project Management
  - Plans and specifications are developed.
  - Environmental clearance is obtained.
  - Formal and informal bidding process per Public Contract Code.
  - Contract Administration (Awarding through Close Out).
  - Inspection.



# SPECIAL DISTRICTS PROJECTS

## Major Recently Completed Projects:

- Kessler Park Dream Field
- Big Bear Sports Ranch Park Roof Replacement
- CSA 18 Cedarpines Road Paving
- Glen Helen Screw Press
- Glen Helen Small Bridge Replacement

## Major Ongoing Projects:

- Ayala Park Splashpad
- Calico Bridge Replacement
- Chino Airport Water Remediation Phase 2
- CSA 70 F Little Morongo Heights Tank Replacement
- Lake Gregory Sitewide Sediment Management



# SPECIAL DISTRICTS PROJECTS

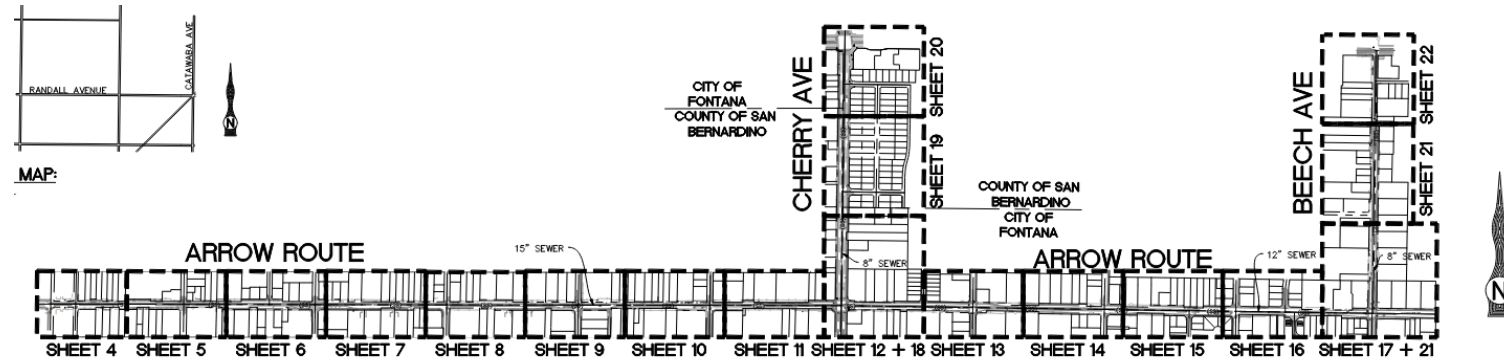
## Upcoming Projects :

1. Arrow Route Sewer Main Project
2. Kessler Little League Baseball and Softball Statues
3. Cedar Glen Lead & Copper Replacement (Design)
4. CSA 70 J 3A Reservoir Site Expansion (Design)
5. Bloomington Sewer Expansion
6. CSA 70 R-21 / CSA 59 Paving Projects



# SPECIAL DISTRICTS UPCOMING PROJECT HIGHLIGHT

- Arrow Route Sewer Section
  - 8"-15" SDR pipe 19,000+ LF
  - Trench Repair 100,000+ SqFt
  - Manholes 60+ ea



**ABBREVIATIONS:**

ABAND	ABANDONED
AC	ASPHALT CONCRETE
AP	ANGLE POINT
BC	BEGINNING OF CURVE
BCR	BEGIN CURB RETURN
CB	CATCH BASIN
CF	CURB FACE
CL	CENTERLINE
EC	END OF CURVE
ECR	END CURB RETURN
ELEV	ELEVATION
FH	FIRE HYDRANT
FL	FLOW LINE
FS	FINISH SURFACE
GB	GRADE BREAK
INV	INVERT
LF	LINEAR FEET
MH	MANHOLE
PCC	PORTLAND CEMENT CONCRETE
PRC	POINT OF REVERSE CURVE
S	SLOPE
SD	STORM DRAIN
STA	STATION
TC	TOP OF CURB
WM	WATER METER
+	(+)- EXISTING GAS UTILITY
-	(-)- EXISTING WATER UTILITY
(E)	(E)- EXISTING ELECTRIC UTILITY
(T)	(T)- EXISTING TELEPHONE UTILITY
(SS)	(SS)- EXISTING SEWER UTILITY
(FO)	(FO)- EXISTING FIBER OPTIC UTILITY

**SHEET INDEX:**

1.	TITLE SHEET
2.	GENERAL NOTES
3.	DETAILS
4.	PLAN/PROFILE STA. 9+98.02 TO STA. 15+50.00
5.	PLAN/PROFILE STA. 15+50.00 TO STA. 25+00.00
6.	PLAN/PROFILE STA. 25+00.00 TO STA. 35+00.00
7.	PLAN/PROFILE STA. 35+00.00 TO STA. 45+50.00
8.	PLAN/PROFILE STA. 45+50.00 TO STA. 55+50.00
9.	PLAN/PROFILE STA. 55+50.00 TO STA. 65+00.00
10.	PLAN/PROFILE STA. 65+00.00 TO STA. 75+00.00
11.	PLAN/PROFILE STA. 75+00.00 TO STA. 85+50.00
12.	PLAN/PROFILE STA. 85+50.00 TO STA. 94+50.00
13.	PLAN/PROFILE STA. 94+50.00 TO STA. 104+50.00
14.	PLAN/PROFILE STA. 104+50.00 TO STA. 115+00.00
15.	PLAN/PROFILE STA. 115+00.00 TO STA. 125+00.00
16.	PLAN/PROFILE STA. 125+00.00 TO STA. 134+50.00
17.	PLAN/PROFILE STA. 134+50.00 TO STA. 140+63.84
18.	PLAN/PROFILE CHERRY AVE STA. 9+98.00 TO STA. 18+50.00
19.	PLAN/PROFILE CHERRY AVE STA. 18+50.00 TO STA. 29+00.00
20.	PLAN/PROFILE CHERRY AVE STA. 29+00.00 TO STA. 35+34.88
21.	PLAN/PROFILE BEECH AVE STA. 9+98.00 TO STA. 18+50.00
22.	PLAN/PROFILE BEECH AVE STA. 18+50.00 TO STA. 29+00.00
23.	PLAN/PROFILE BEECH AVE STA. 29+00.00 TO STA. 35+87.79
24.	SEWER LATERAL PROFILES - LATERALS "A" THROUGH "C"
25.	SEWER LATERAL PROFILES - LATERALS "D" THROUGH "F"
26.	SEWER LATERAL PROFILES - LATERALS "G" THROUGH "I"
27.	SEWER LATERAL PROFILES - LATERALS "J" THROUGH "L"
28.	SEWER LATERAL PROFILES - LATERALS "M" THROUGH "N"

**INDEX MAP:**  
SCALE: 1"=600'

**SEWER IMPROVEMENT CONSTRUCTION NOTES:**

	QUANTITIES
①	CONSTRUCT 15" SDR-26 POLYVINYL CHLORIDE SEWER PER CITY OF FONTANA STANDARD PLAN NO. 2009. . . . . 7,700 LF
②	CONSTRUCT 12" SDR-26 POLYVINYL CHLORIDE SEWER PER CITY OF FONTANA STANDARD PLAN NO. 2009. . . . . 5,332 LF
③	CONSTRUCT 8" SDR-26 POLYVINYL CHLORIDE SEWER PER CITY OF FONTANA STANDARD PLAN NO. 2009. . . . . 5,980 LF
④	CONSTRUCT 4' MANHOLE PER CITY OF FONTANA STANDARD PLAN NO. 2000 AND 2001. . . . . 52 EA
⑤	CONSTRUCT TRENCH REPAIR PER COUNTY OF SAN BERNARDINO STANDARD DETAIL 2, SHEET 3. . . . . 107,200 SF
⑥	RECONSTRUCT EXISTING MANHOLE BASE PER DETAIL 1 SHEET 3. . . . . 1 EA
⑦	CONSTRUCT WATER TIGHT BULKHEAD AT PIPE END. . . . . 16 EA
⑧	CONSTRUCT 10" SDR-26 POLYVINYL CHLORIDE SEWER PER CITY OF FONTANA STANDARD PLAN NO. 2009. . . . . 30 LF
⑨	CONSTRUCT 5" MODIFIED MANHOLE PER CITY OF FONTANA STANDARD PLAN NO. 2000 AND 2001. . . . . 19 EA
⑩	CONSTRUCT TRENCH REPAIR PER CITY OF FONTANA STANDARD PLAN NO. 1008, SEE DETAIL 3 ON SHEET 3. . . . . 15,600 SF

**CITY OF FONTANA, UTILITY NOTIFICATION LIST:**

CITY OF FONTANA 8353 SIERRA AVENUE FONTANA, CA 92335 (909) 350-7610	SO. CALIF. EDISON ATTN: DOUGLAS PENDELTON 7951 REDWOOD AVENUE FONTANA, CA 92336 (909) 357-6168
UNDERGROUND SERVICE ALERT (800) 227-2600/ 811	SPRINT COMMUNICATIONS CO. ATTN: LYNN DURRETT 282 S SYCAMORE AVENUE RIALTO, CA 92376 (909) 873-8022
SO. CALIF. GAS COMPANY ATTN: GEARY AMBERS 1981 W. LUGONIA AVENUE REDLANDS, CA 92374 (909) 335-7855	EMERGENCIES: (800) 427-2200
FONTANA WATER COMPANY ATTN: JIM CHAPMAN 15866 ARROW ROUTE FONTANA, CA 92335 (909) 822-9190	CHARTER COMMUNICATION ATTN: VALERIE PATAO 1500 AUTO CENTER DRIVE ONTARIO, CA 91761 (909) 239-4790
MARYGOLD MUTUAL WATER ATTN: JUSTIN BROKAW 9725 ALDER AVENUE BLOOMINGTON, CA 92316 (909) 877-0516	AT&T CALIFORNIA ATTN: CHAR HINZO 7337 TRADE STREET, RM. 5685 SAN DIEGO, CA 92121 (858) 866-1288
CENTURY LINK ATTN: CALEB KING 100 SOUTH ONCORINATI AVENUE SUITE 1200 TULSA, OK 74103 (918) 547-0007	AT&T ATTN: ROBERT STURTEVANT 3073 ADAMS STREET, 2ND FLOOR RIVERSIDE, CA 92507 (951) 359-2263
USA MEMBER UTILITY, PHONE 9200 INDIAN CREEK PARKWAY SUITE 201 OVERLAND PARK, KS 66210 (913) 451-5641	FRONTIER COMMUNICATIONS ATTN: DEBREE SERRANO 9 SOUTH 4TH STREET REDLANDS, CA 92376 (909) 748-6640

**MARK:**  
1/4" BENCH MARK NO. 7794  
3 SQUARE PER 4015/1824  
LOCATED AT THE BEGINNING OF  
1 AT THE SOUTHWEST CORNER  
OF AVENUE AND ARROW



SHOULD CONSTRUCTION OF THE REQUIRED IMPROVEMENTS NOT COMMENCE WITHIN TWO YEARS OF THE DATE OF APPROVAL SHOWN HEREON AND CARRIED FORTH IN A DILIGENT MANNER, THE CITY ENGINEER MAY REQUIRE REVISIONS TO THE PLANS TO BRING THEM INTO CONFORMANCE WITH



Prepared Under the Supervision of:  
**TKE**  
THE ENGINEERING, INC.  
3000 INDIAN CREEK PARKWAY  
RIVERSIDE, CA 92507  
TEL: (951) 502-4400  
FAX: (951) 502-4400

**CITY OF FONTANA**

DESIGNED BY: JBR	ARROW
DRAWN BY: TMR	INDEX
CHECKED BY:	APPROVED BY:



## Electronic Procurement System - <https://epro.sbcounty.gov/bsa/>

- Project Advertisements: Bid Number SPD123
- Creates Plan holders List
- Prebid Information
- Submits Questions for Bidders
- Plans and Specifications available for download
- Disperses addendum(s)
- Bid Submission
  - Bid Bonds submitted must be original and wet signed
- Posts Bid Opening Results
- BOS Contracts Award

