



Construction Network
Port of Long Beach
Capital Program

Sean Gamette, P.E.

Managing Director, Engineering Services Bureau

April 8, 2025



HARBOR DISTRICT

**SSA
PIER C**

**SSA
PIER A**

**LBCT
PIERS E-F**

**TTI
PIER T**

**ITS
PIER G**

**SSA PCT
PIER J**

20
YEARS
LEADING GREEN



**Port of
LONG BEACH**
THE GREEN PORT

WE ARE A LANDLORD PORT

An aerial photograph of a large port city, likely Los Angeles, showing the harbor, city skyline, and mountains in the background. The image is used as a background for a presentation slide.

*75% Revenue
from Terminal Leases*

No Tax Dollars Used

*Net Income Re-
invested in the Port*

*Five Member Board of
Harbor Commissioners*

ECONOMIC ENGINE

An aerial photograph of a large port area, likely Long Beach, showing numerous shipping containers stacked in rows, several large cargo ships docked at piers, and industrial cranes. The background shows a cityscape and distant mountains under a clear sky. The image is overlaid with white and teal text and white arrows pointing to specific areas of the port.

51,000 JOBS

1 IN 5 JOB IN LONG BEACH

576,000 JOBS

IN SOUTHERN CALIFORNIA

705,000 JOBS

IN CALIFORNIA

2.6 MILLION JOBS

IN THE UNITED STATES

\$300 BILLION

WORTH OF GOODS

Premier Port for Sustainable and Efficient Infrastructure



On-Dock Rail

Safety and Security

Environmental

Waterways and Waterfront Infrastructure

Social

Economic

Bridges and Roadways

Public Works

Terminal Development

ZEERO

20
YEARS
LEADING GREEN

Port of LONG BEACH
THE GREEN PORT



RAILWAYS
BRIDGE



WATERWAYS

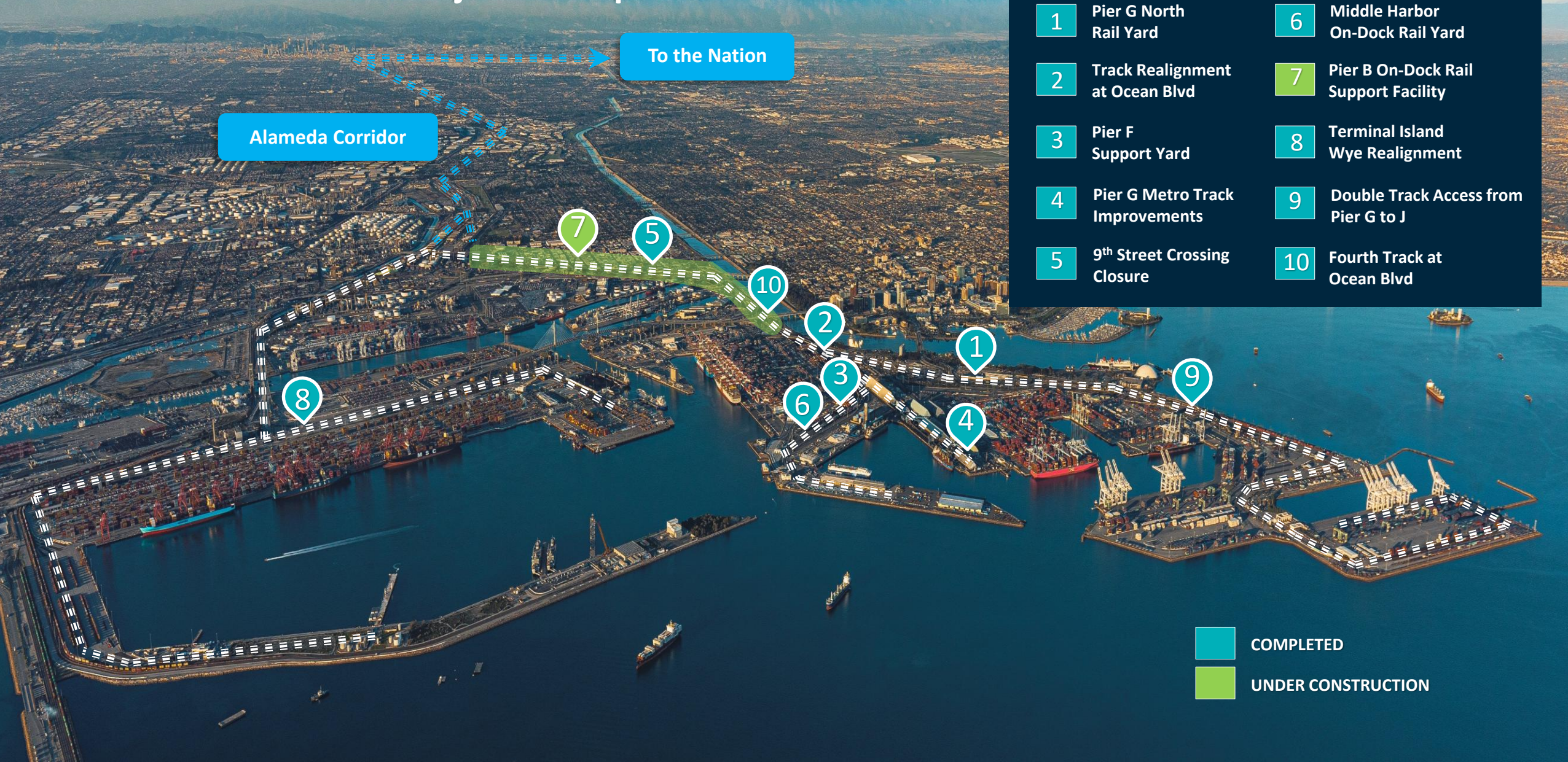


STREET IMPROVEMENTS

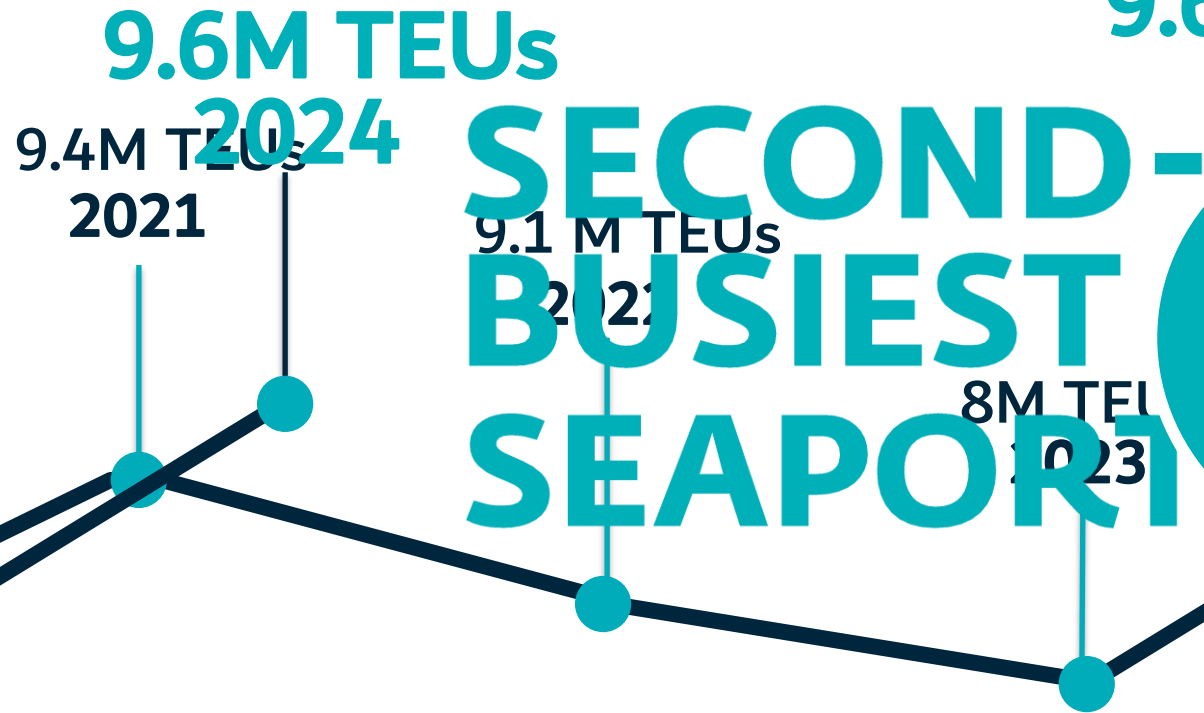


TERMINAL DEVELOPMENT

9 of 10 Rail Projects Completed

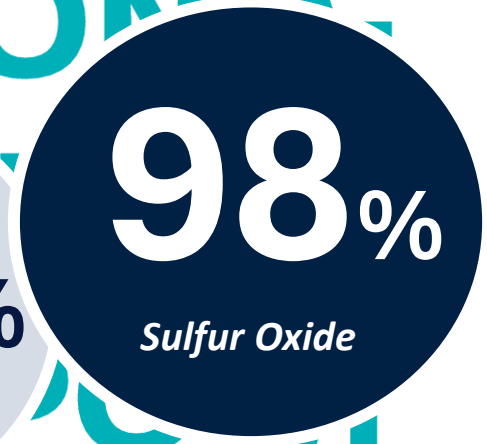
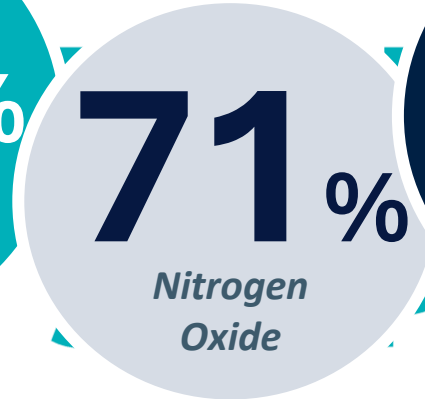
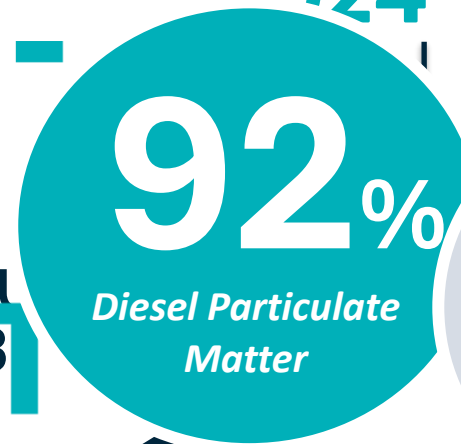


Up 20%



SECOND-BUSIEST SEAPORT

2023 AIR EMISSION REDUCTIONS





ZE TERMINAL INFRASTRUCTURE DEVELOPMENT



19% ZE
CARGO HANDLING
EQUIPMENT



LONG BEACH CONTAINER TERMINAL

20
YEARS
LEADING GREEN

Port of
LONG BEACH
THE GREEN PORT

18 SHIP TO
SHORE CRANES

69 ELECTRIFIED
CRANES

250
BOMB CARTS

64 TERMINAL
YARD TRACTOR (UTRs)

102 ZE CONTAINER
TRANSPORT VEHICLES

6 INTERMODAL RAIL-
MOUNTED GANTRY CRANES
(RMG)



SHORE POWER

 **79**
INSTALLED
TO DATE

 **FUTURE**

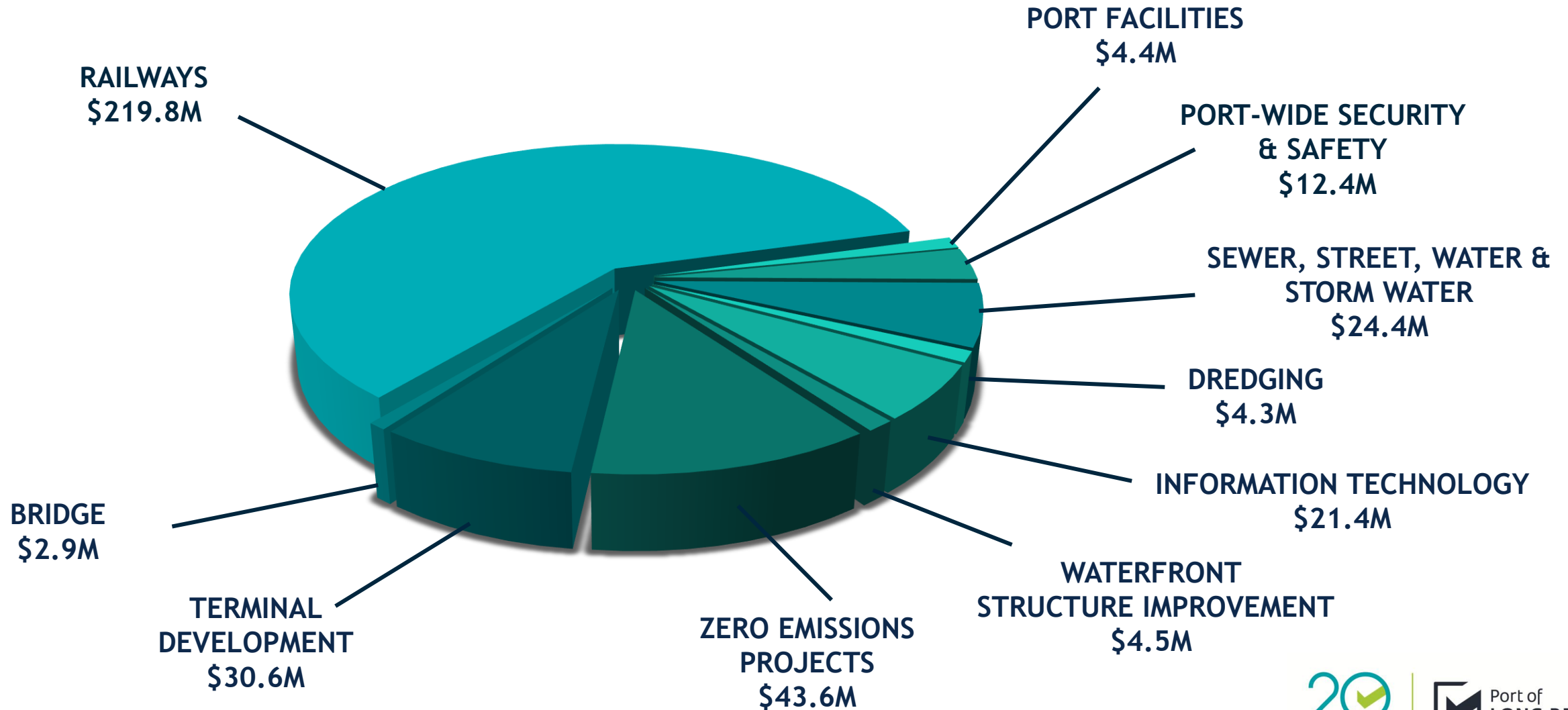
STRATEGIC CAPITAL INVESTMENTS

*Increasing the Efficiency of Goods Movement and
Reducing the Environmental Impacts from Port Operations*

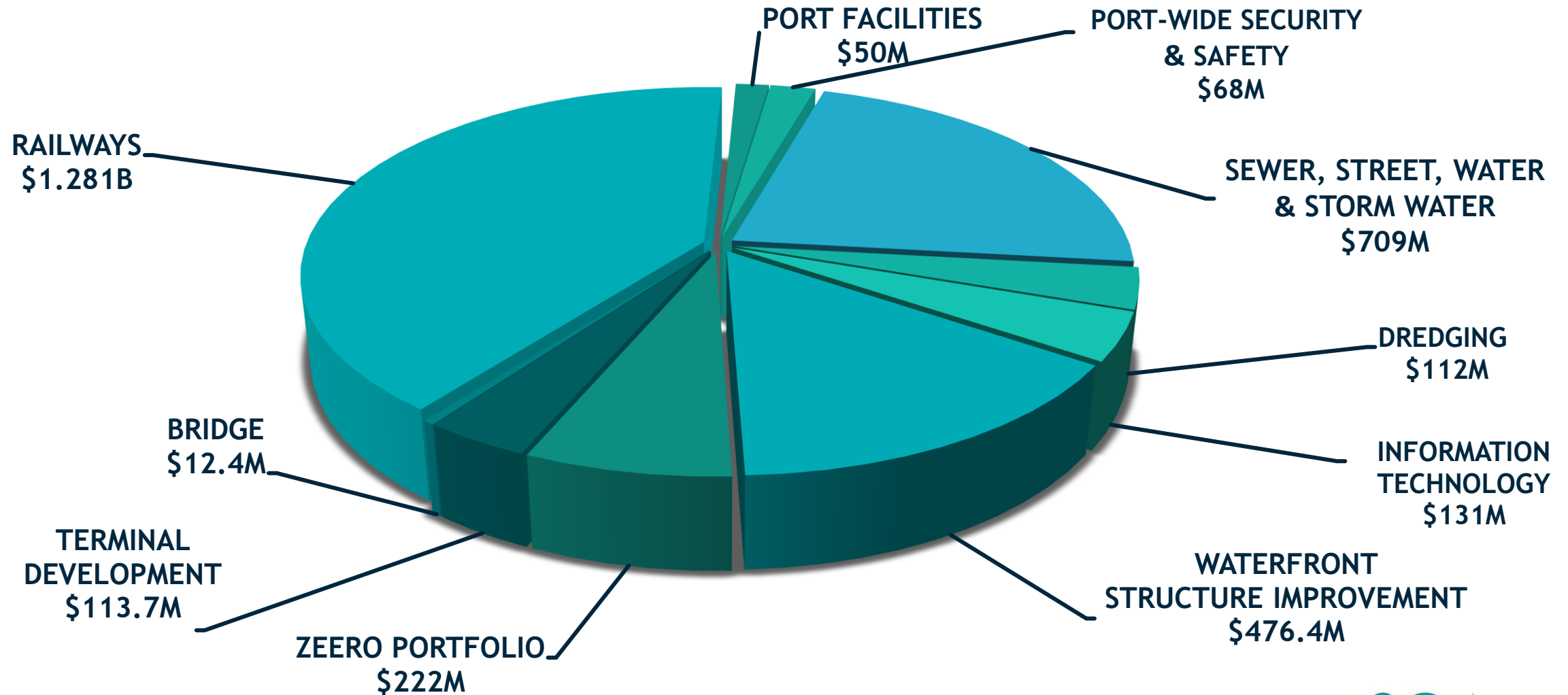
PORT INFRASTRUCTURE INVESTMENT
10 YEARS - \$3.2 BILLION*

**Excludes infrastructure investments by tenants*

FY 2025 BOARD ADOPTED CAPITAL PROGRAM BUDGET \$368 MILLION

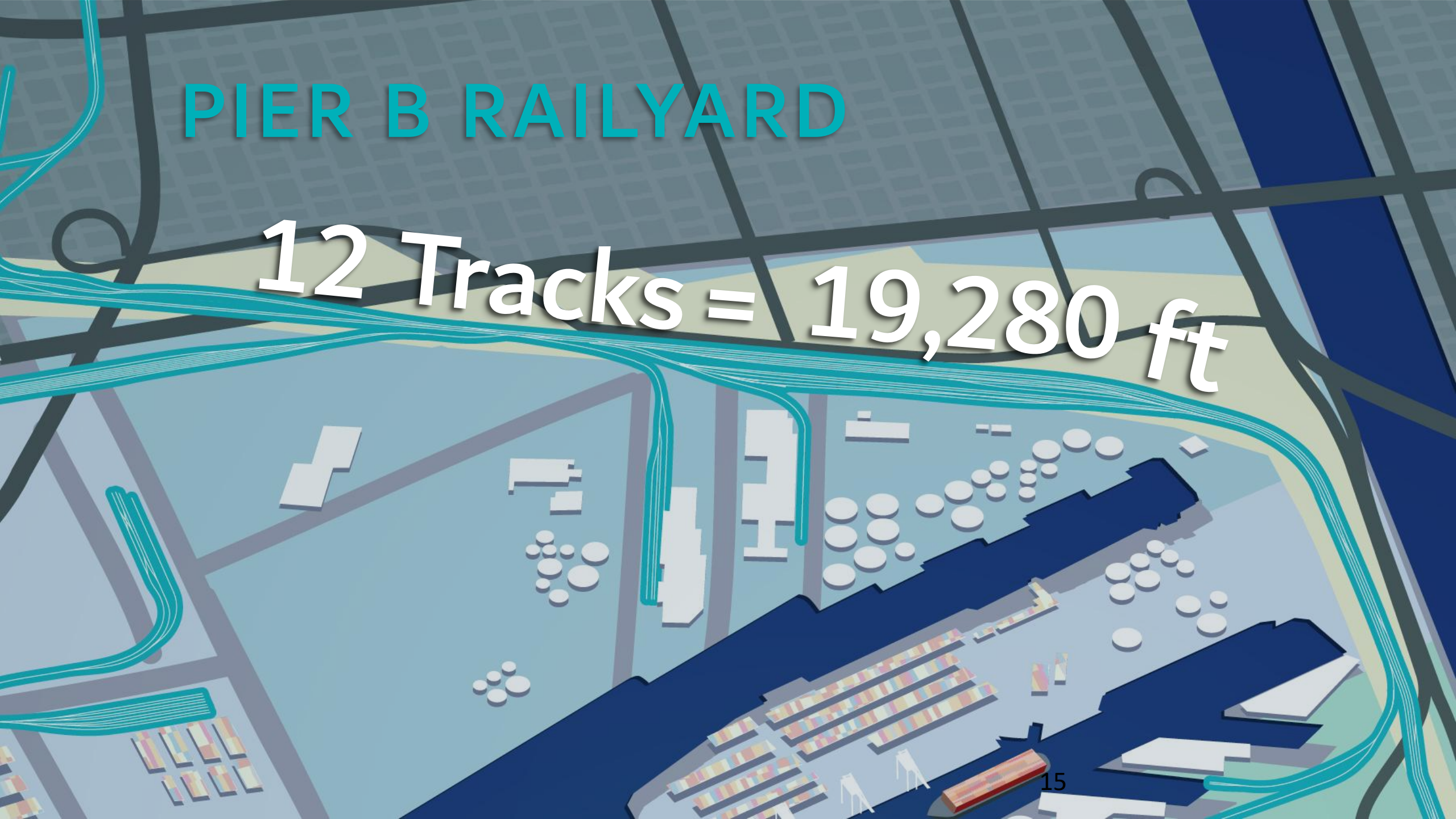


10 YEAR CAPITAL PROGRAM FORECAST (FY 2026 – 2035) \$3.2 BILLION



PIER B RAILYARD

12 Tracks = 19,280 ft



An isometric illustration of a port facility. In the foreground, a yellow locomotive with the number 358 is pulling a blue container train. To the right, a large blue ship is docked at a pier, with several colorful shipping containers stacked nearby. In the background, a massive network of orange and yellow rail tracks curves across the landscape, leading towards a city skyline. The sky is a light blue with stylized clouds.

48 Tracks = 141,926 ft

PIER B ON-DOCK RAIL
SUPPORT FACILITY

*America's
Green Gateway*

PIER B ODRSF PROGRAM CONSTRUCTION AT EAST EXPANSION

20
YEARS
LEADING GREEN

Port of
LONG BEACH
THE GREEN PORT



PIER B ODRSF PROGRAM LOCOMOTIVE FACILITY

20
YEARS
LEADING GREEN

Port of
LONG BEACH
THE GREEN PORT



PIER W *ind*

Floating Offshore Wind Turbine Assembly Hub

DOCKS

Supporting vessel logistics



WET STORAGE

For floating foundations waiting for integration



HEAVY LIFT WHARF

For component delivery, foundation loadout, and turbine integration activities



DOCKS

Supporting pre-commission activities and wet storage



WET STORAGE

For fully assembled turbines waiting for tow out



GREEN TERMINAL

STAGING & INTEGRATION

Large area to stage turbine components and integrate onto floating foundations



FOUNDATION ASSEMBLY

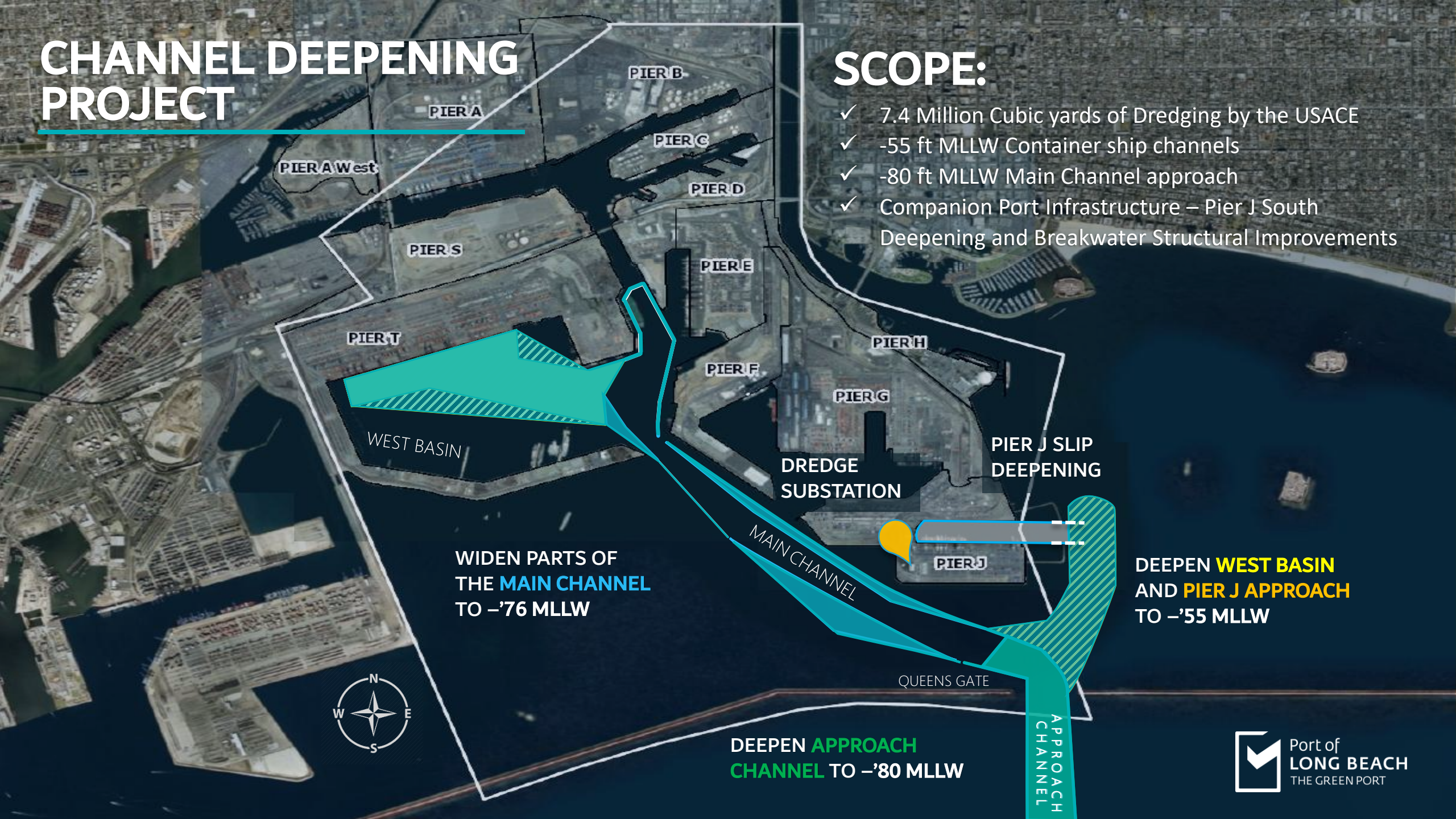
Large area to stage sub-assemblies and assemble multiple foundations concurrently



CHANNEL DEEPENING PROJECT

SCOPE:

- ✓ 7.4 Million Cubic yards of Dredging by the USACE
- ✓ -55 ft MLLW Container ship channels
- ✓ -80 ft MLLW Main Channel approach
- ✓ Companion Port Infrastructure – Pier J South Deepening and Breakwater Structural Improvements

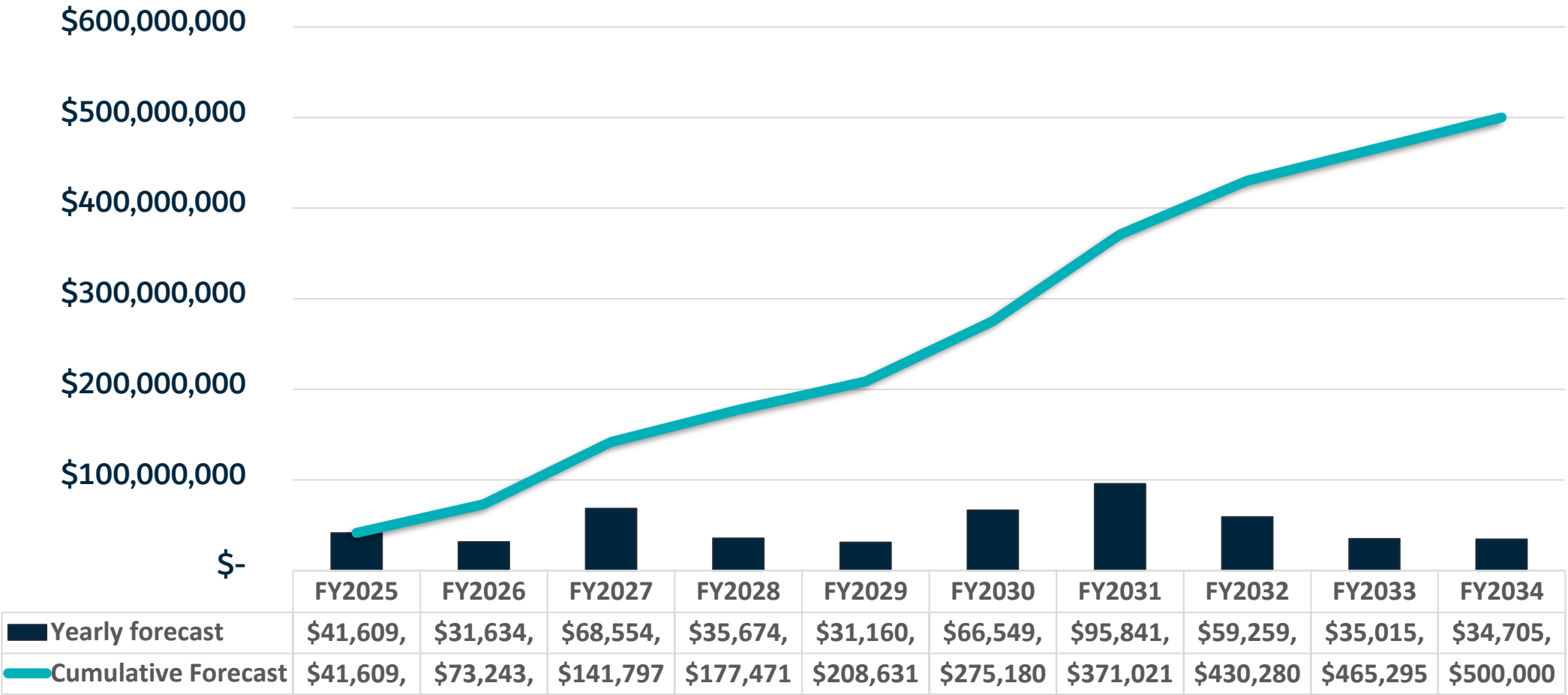


FORECASTED EXPENDITURES FY2025-FY2034

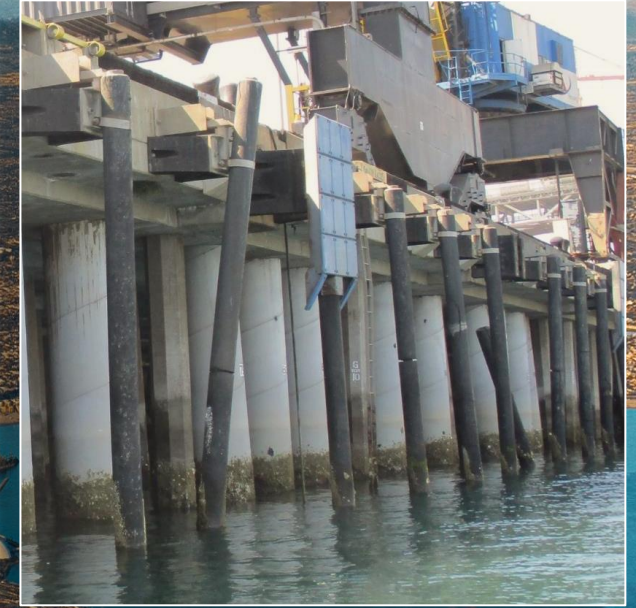
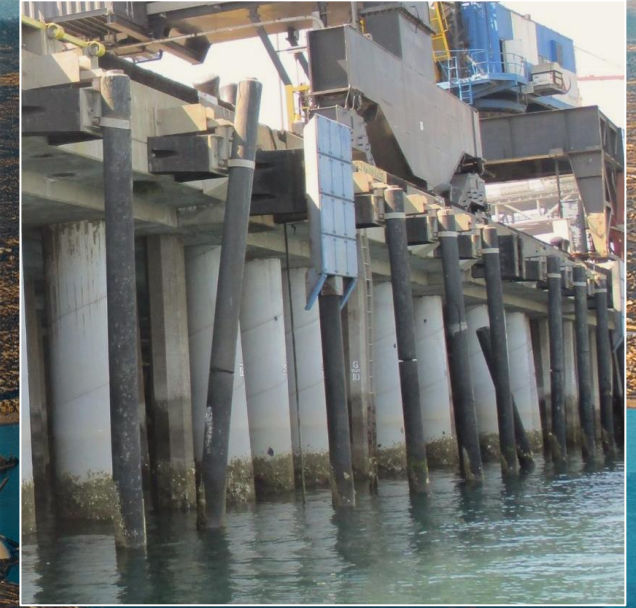
This necessary work meets the definition of expanded uses authorized under WRDA 2020

PURPOSE:

A preview of the Port of Long Beach’s programmed waterfront structure maintenance and rehabilitation work.



WATERFRONT STRUCTURE IMPROVEMENTS



BERTH G234 WHARF AND PIER G SOUTH SLIP FILL PROJECT

20
YEARS
LEADING GREEN

Port of
LONG BEACH
THE GREEN PORT

EXISTING BERTH
G232 WHARF

BERTH G227 WHARF DEMO

PROPOSED FILL AREA
2.6 MCY DREDGED SEDIMENT,
19 NEW NET TERMINAL ACRES

BERTH G235
WHARF DEMO

EXISTING BERTH
G236 WHARF

PROPOSED NEW BERTH G234 WHARF LENGTH 565 FT.
– RESULTS IN TOTAL CONTINGUOUS WHARF LENGTH OF 3400 FT.

20 UPCOMING PROJECTS

~\$10M

PIER B DEMOLITION AND
GENERAL SERVICES ON-CALL



\$30M

PIER B RAIL YARD
LOCOMOTIVE FACILITY



\$59M

PIER B RAIL YARD WEST
EXPANSION AND STREET ALIGNMENT

~\$10M

PIER B ELECTRICAL ON-CALL



\$31M

PIER B SHOEMAKER BRIDGE
RAMP DEMOLITION



\$42M

LA-04 PUMP STATION RELOCATION

\$129M

PIER B RAIL NORTH YARD
UTILITIES AND PIER B ST WIDENING



\$8.8M

PIER E NORTH GATE EXPANSION



\$2.2M

HEAVY HAUL
ROUTE IMPROVEMENT

\$5M

PIER S PAVING AND STORM
DRAIN IMPROVEMENTS



\$760K

SEWER LIFT STATION
101 GENERATOR



\$30M

HARBOR SCENIC ROADWAY

\$770K

PORTWIDE TRASH FULL
CAPTURE SCREENS INSTALLATION



\$1.1M

MAINTENANCE BUILDING C
PUMP SHOP CONVERSION



\$1.3M

GATEWAY ENTRY AND
MONUMENT SIGNAGE

\$640K

MAINTENANCE FACILITY
ELECTRICAL VEHICLE
CHARGING STATIONS



\$20M

HARBOR FLEET ZE
INFRASTRUCTURE



\$1.3M

PIER G BERTHS
G212-213 SHIPLOADER NO. 2



\$4.7B

(2023)

PIER WIND



\$13M

PIER J SOUTH DEEPENING
AND BREAKWATER
STRUCTURAL IMPROVEMENTS



A background image of a construction site at dusk or dawn. In the foreground, two workers in high-visibility vests and hard hats are working on a grid of rebar. In the background, several large cranes are visible against a dark sky, and a body of water is on the right. The text is overlaid on the left side of the image.

CURRENT AND UPCOMING OPPORTUNITIES

Planning and Engineering

CONSULTING OPPORTUNITIES TO LOOK OUT FOR

(Program Management and Survey)



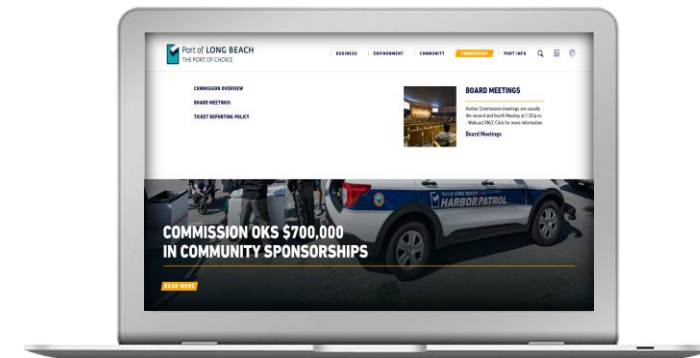
▶ **BACKUP GENERATOR FOR LA-04 PUMP STATION**
ADVERTISE: SPRING 2025

▶ **SEWER INFRASTRUCTURE ASSESSMENT STUDY**
ADVERTISE: SUMMER 2025

▶ **STORMWATER INFRASTRUCTURE ASSESSMENT STUDY**
ADVERTISE: SUMMER 2025

▶ **ON-CALL PROGRAM MANAGEMENT SERVICES**
ADVERTISE: WINTER 2026

▶ **ON-CALL LAND SURVEYING SERVICES**
ADVERTISE: FALL 2025



CONSULTING OPPORTUNITIES TO LOOK OUT FOR

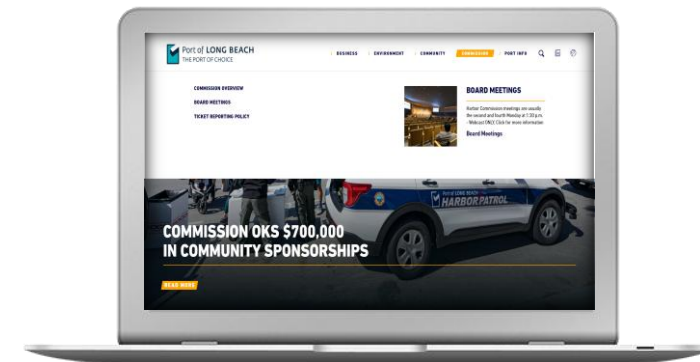
(Construction Management)



► **CONSTRUCTION MANAGEMENT FOR LA-04 PUMP STATION PROJECT**
ADVERTISE: SPRING 2025

► **ON-CALL CONSTRUCTION MANAGEMENT SERVICES**
ADVERTISE: SPRING 2025

► **ON-CALL TESTING AND INSPECTION SERVICES**
ADVERTISE: SPRING 2025



CONSULTING OPPORTUNITIES TO LOOK OUT FOR

(Environmental Planning)

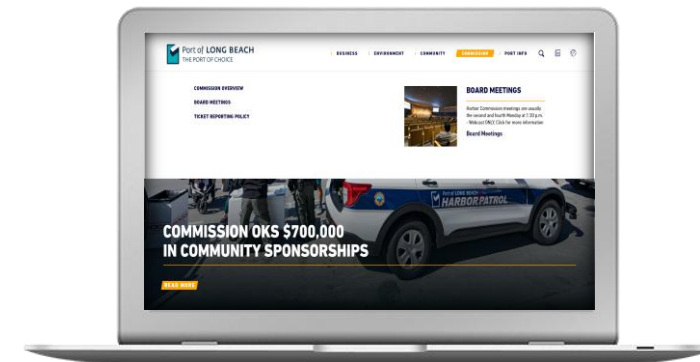


▶ **COASTAL RESILIENCY PLAN CONSULTING SERVICES**
ADVERTISE: SPRING 2025

▶ **ON-CALL AIR QUALITY SERVICES**
ADVERTISE: SUMMER 2025

▶ **ON-CALL TESTING AND INSPECTION SERVICES**
ADVERTISE: SPRING 2025

▶ **ON-CALL GRANT FUNDING ASSISTANCE**
ADVERTISE: FALL 2025



CONSULTING OPPORTUNITIES TO LOOK OUT FOR

(Environmental Planning)

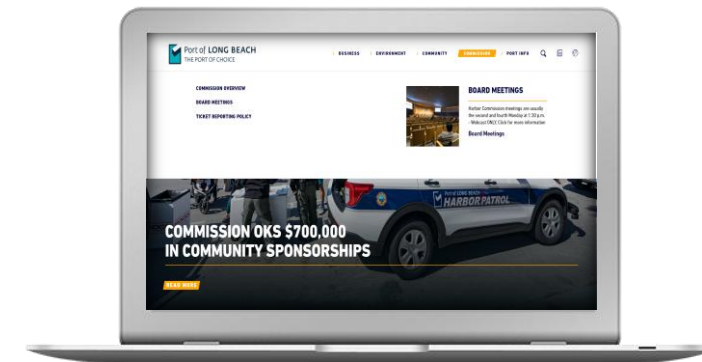


▶ TECHNOLOGY ADVANCEMENT PROGRAM CONSULTING SERVICES

ADVERTISE: FALL 2025

▶ ON-CALL CEQA NEPA SERVICES ADVERTISE: WINTER 2026

▶ ON-CALL WATER AND SEDIMENT QUALITY PROFESSIONAL SERVICE ADVERTISE: WINTER 2026



CONSTRUCTION OPPORTUNITIES TO LOOK OUT FOR



PIER B ON-DOCK RAIL SUPPORT FACILITY - WEST EXPANSION

ADVERTISE: FALL 2025

LA-04 PUMP STATION RELOCATION

ADVERTISE: SUMMER 2025

PIER B SHOEMAKER BRIDGE RAMPS DEMOLITION

ADVERTISE: SPRING 2025

PIER B RAIL NORTH YARD UTILITIES & PIER B ST. WIDENING

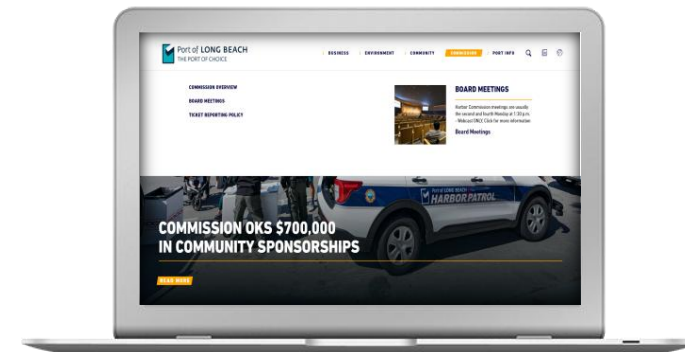
ADVERTISE: SPRING 2025

PIER B RAIL YARD ACCESS IMPROVEMENT

ADVERTISE: FALL 2025

PIER S PAVING AND STORM DRAIN IMPROVEMENTS

ADVERTISE: FALL 2025



CONSTRUCTION OPPORTUNITIES TO LOOK OUT FOR



HARBOR FLEET ZE INFRASTRUCTURE
ADVERTISE: SPRING 2026

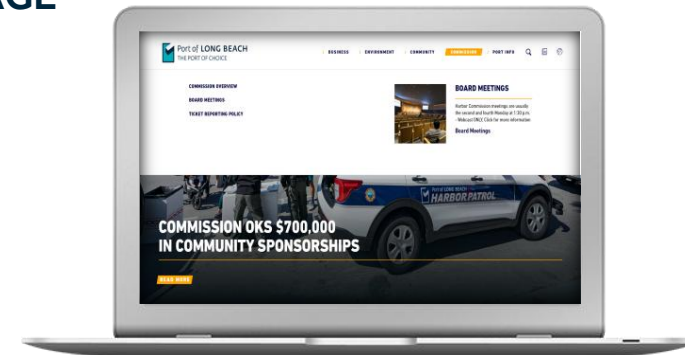
PIER G BERTHS G212-213, SHIPLOADER NO.2 INFRASTRUCTURE IMPROVEMENTS
ADVERTISE: FALL 2025

PIER J SOUTH DEEPENING AND CHANNEL WIDENING
ADVERTISE: SPRING 2026

ELECTRIC DREDGE SUBSTATION
ADVERTISE: FALL 2025

GATEWAY ENTRY AND MONUMENT SIGNAGE
ADVERTISE: WINTER 2026

SLS 101 GENERATOR
ADVERTISE: SUMMER 2025



CONSTRUCTION OPPORTUNITIES TO LOOK OUT FOR



STORMWATER PUMP STATION NO. 28 REHABILITATION

ADVERTISE: FALL 2025

PUMP STATION 30 REHABILITATION

ADVERTISE: FALL 2025

PICO AVE ST. IMPROVEMENT PIER D TO PIER E

ADVERTISE: WINTER 2026

PIER D STREET REALIGNMENT

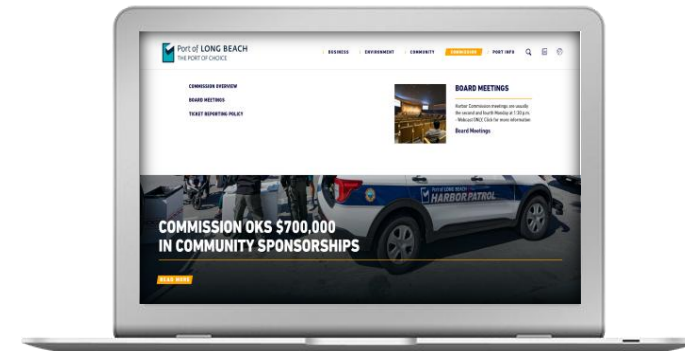
ADVERTISE: SUMMER 2026

PAVEMENT REHABILITATION PIER B, F, J & T

ADVERTISE: SUMMER 2025

HARBOR SCENIC ROADWAY & INFRASTRUCTURE IMPROVEMENTS

ADVERTISE: SUMMER 2025





Port of **LONG BEACH**
THE PORT OF CHOICE

[BUSINESS](#) / [ENVIRONMENT](#) / [COMMUNITY](#) / [COMMISSION](#) / [PORT INFO](#)

BUSINESS OPPORTUNITIES

Register to do business with the Port, apply for Small Business Enterprise certification and more information for vendors and contractors.

[/ BUSINESS](#) / [BUSINESS OPPORTUNITIES](#)

Search

BUSINESS OPPORTUNITIES OVERVIEW

[FUTURE WORK](#)

[RFP/RFQ RESOURCES](#)

[SBE/VSBE PROGRAM OVERVIEW](#)

[DISADVANTAGED BUSINESS ENTERPRISE \(DBE\) PROGRAM](#)

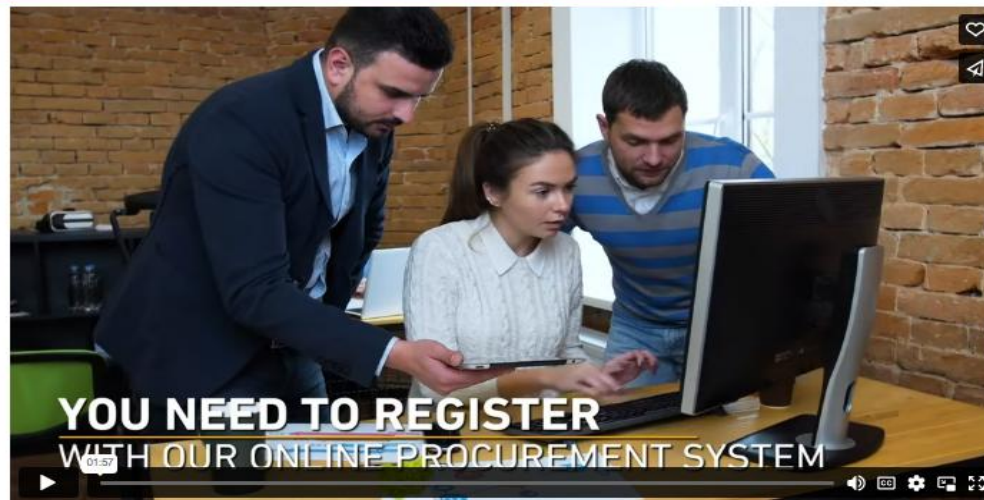
[LABOR COMPLIANCE/PLAS](#)

[Access the POLB Vendor Portal](#)

Resources

Access to POLB Vendor Portal

BUSINESS OPPORTUNITIES OVERVIEW



How-to Registration Video

Thank you for your interest in doing business with the Port of Long Beach.



20
YEARS
LEADING GREEN



Port of
LONG BEACH
THE GREEN PORT

Strong **PORT.** *Strong* Maritime.