



Port of Los Angeles Capital Improvement Plan

Shaun Shahrestani – Chief Harbor Engineer

April 8, 2025

Wilmington

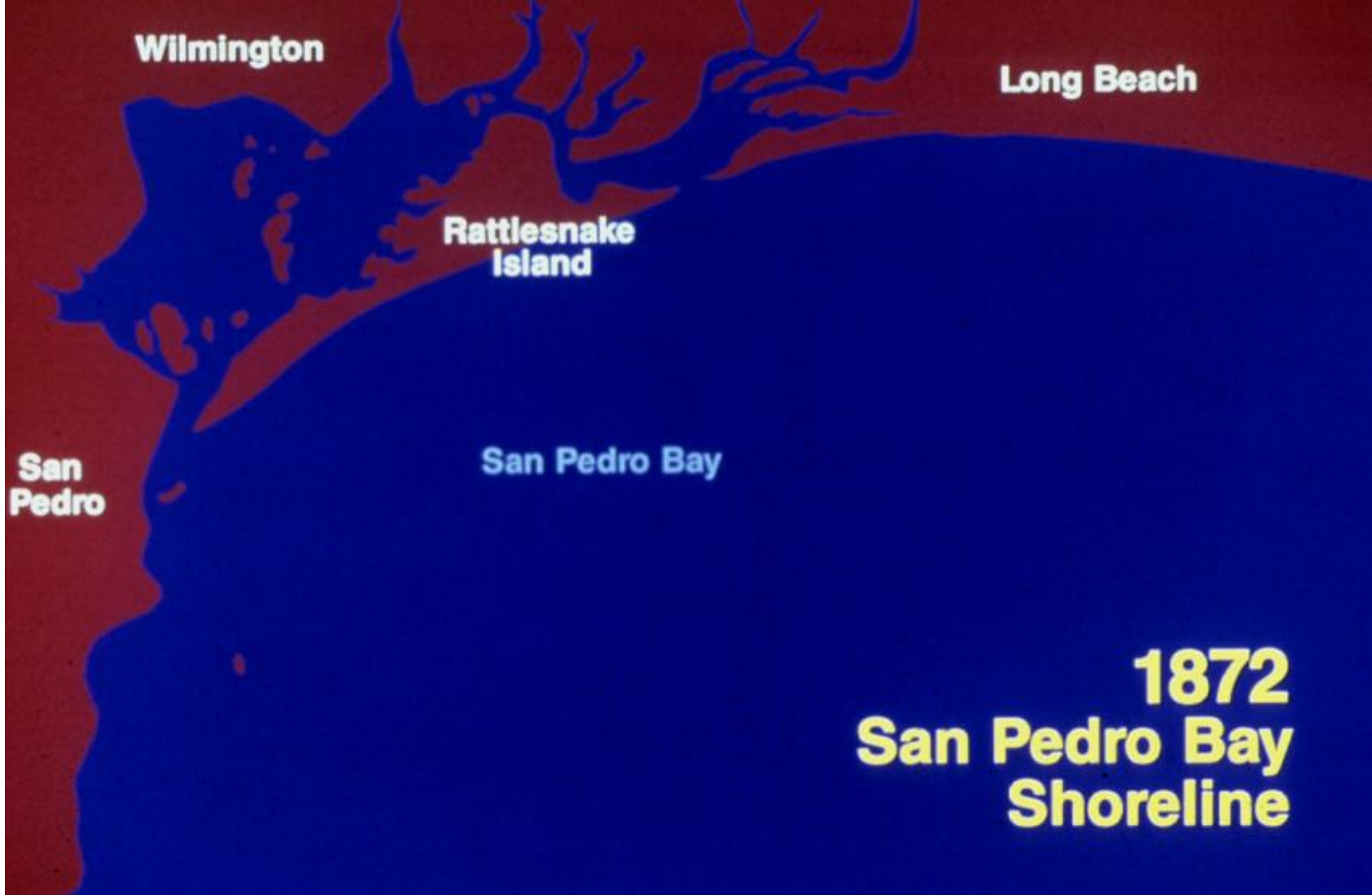
Long Beach

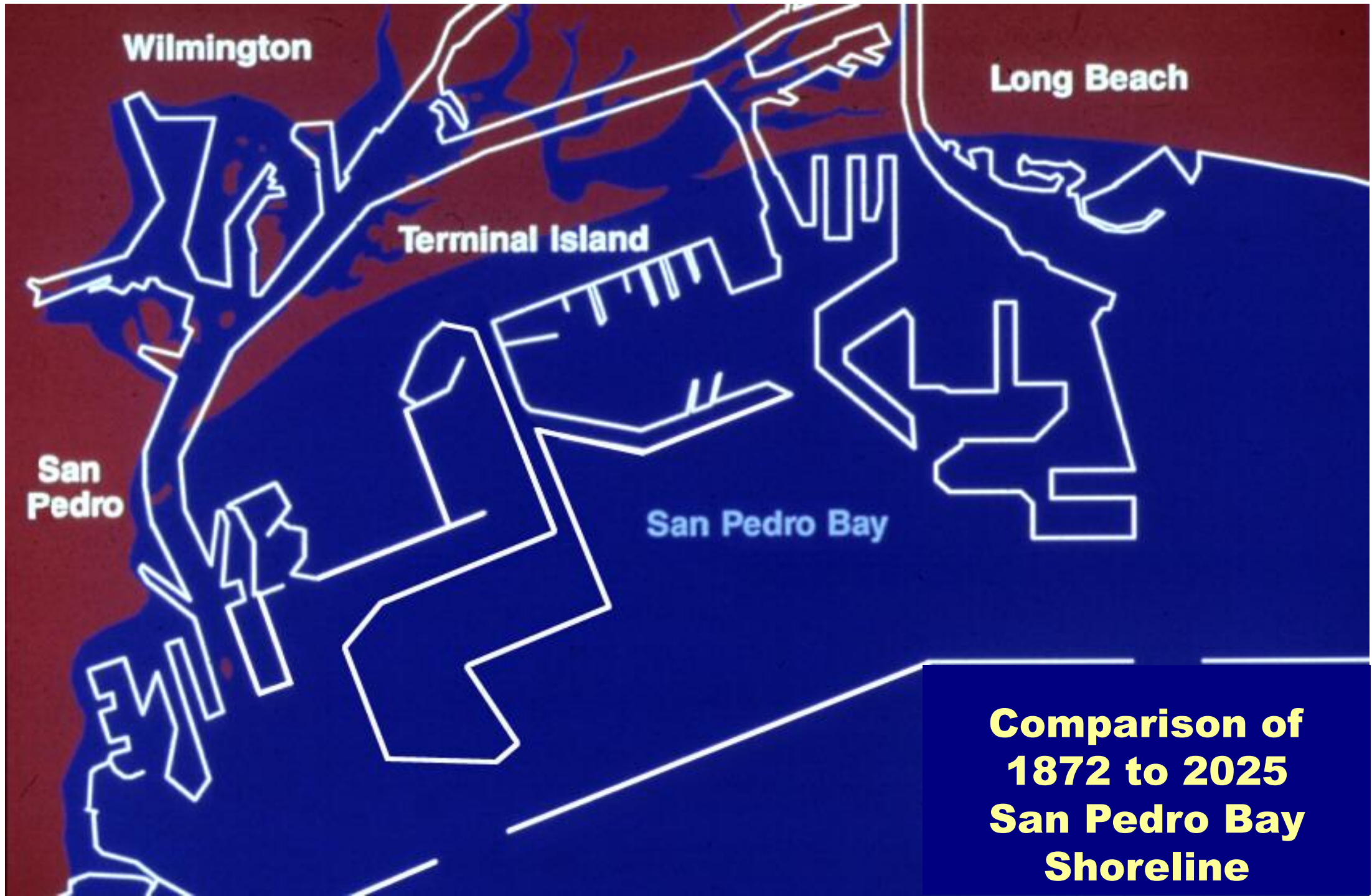
**Rattlesnake
Island**

**San
Pedro**

San Pedro Bay

**1872
San Pedro Bay
Shoreline**





**Comparison of
1872 to 2025
San Pedro Bay
Shoreline**

San Pedro Bay Port Complex



Port of Los Angeles Overview



- Harbor Department founded in 1907
- State Tidelands Trust granted 1911
- Not Supported by Tax Dollars
- Landlord Model
- Handles Cargo to & from every corner of the U.S.
- By the Numbers:
 - 7,500 acres land
 - -53 feet water depth
 - 43 miles of waterfront
 - 270 berths
 - 25 cargo terminals
 - 116 miles of rail

Economic Impact

ECONOMIC IMPACTS (CY 2023)

Port of Los Angeles

MARKET SHARE



- Ranked **No.16** in the world
- 128,000 (**1 in 15**) jobs in Los Angeles
- 462,000 (**1 in 19**) jobs in five-county region
- 1.4 million (**1 in 111**) jobs throughout the U.S.



San Pedro Bay Port Complex

Port of Los Angeles + Port of Long Beach

MARKET SHARE



- Ranked **No.9** in the world
- 171,000 (**1 in 13**) jobs in Los Angeles/Long Beach
- 931,000 (**1 in 9**) jobs in five-county region
- 2.7 million (**1 in 58**) jobs throughout the U.S.

Asia – North America Gateway



Container Terminal Facilities



TRAPAC

Land area: 185 acres (75 hectares)
Total berth length: 5,400' (1,646 meters)
Berths: 4
Water depth: 45' – 53' (13.7 – 16.1 meters)
Cranes: 10 Post-Panamax cranes
Gate: 17 lanes
On-dock rail: 8 tracks = 20,600' (6,278 meters)
Reefer plugs: 685

EVERGLADES COMPANY TERMINAL (WBCT)

Land area: 186 acres (75 hectares)
Total berth length: 2,500' (762 meters)
Berths: 2
Water depth: 45' (13.7 meters)
Cranes: 5 Post-Panamax cranes
Gate: 30 lanes
On-dock rail: 3 tracks = 8,920' (2,718 meters)
Reefer plugs: 376

CHINA SHIPPING (WBCT)

Land area: 132 acres (53.4 hectares)
Berth length: 2,500' (762 meters)
Berths: 2
Water depth: 53' (16.1 meters)
Cranes: 10 Super Post-Panamax cranes
Gate: Shared with YML
On-dock rail: Shared with YML
Reefer plugs: 204

YUSEN TERMINALS

Land area: 185 acres (75 hectares)
Total berth length: 5,800' (1,768 meters)
Berths: 3
Water depth: 45' (13.7 meters)
Cranes: 10 Post-Panamax cranes
Gate: 30 lanes
On-dock rail: 4 tracks = 8,531' (2,600 meters)
Reefer plugs: 406

EVERPORT TERMINAL

Land area: 205 acres (82 hectares)
Total berth length: 5,800' (1,768 meters)
Berths: 3
Water depth: 45' (13.7 meters)
Cranes: 8 Post-Panamax cranes
On-dock rail: 4 tracks = 9,300' (2,834 M)
Reefer plugs: 560

FENIX MARINE SERVICES

Land area: 292 acres (118 hectares)
Total berth length: 4,000' (1,219 meters)
Berths: 3
Water depth: 50' (15.2 meters)
Cranes: 16 Post-Panamax cranes
Gate: 23 entry/exit
On-dock rail: 8 tracks = 20,415' (6,222 meters)
Reefer plugs: 706

APM TERMINALS

Land area: 484 acres (196 hectares)
Total berth length: 7,300' (2,225 meters)
Berths: 6
Water depth: 55' (16.8 meters)
Cranes: 19 Post-Panamax cranes
Gates: 40 lanes
On-dock rail: 12 tracks = 29,004' (8,840 meters)
Reefer plugs: 2,400

Port of Los Angeles Container Volume



**10 million TEUs
CY – 2024**

No.1 Container Port in North America



Capital Improvement Program 2001 - 2029



More than \$4B invested in our CIP over 25+year period



*In Thousands

*FY 25/26 CIP
\$230 M*

**THE PORT
OF LOS ANGELES** 





Ongoing and Upcoming Projects

Wilmington Waterfront Development



Wilmington Waterfront Promenade



Wilmington Waterfront Promenade



Wilmington Waterfront Promenade



Wilmington Waterfront Promenade



Avalon Pedestrian Bridge and Gateway



- **Cost: \$54,000,000**
- **Advertise: September 2025**
- **Construction: March 2026 - October 2028**

San Pedro Waterfront Town Square & Promenade



Phase I Promenade, Town Square, Floating Docks Cost: \$33M
Construction: Sept. 2019 – Sept. 2021

Phase II Promenade, Town Square, Floating Docks (shown in red) Cost: \$24M
Construction: July 2023 – December 2024

West Harbor – Private Development



West Harbor – Private Development



West Harbor – Private Development



State Route 47/Harbor Blvd. Interchange Reconfiguration



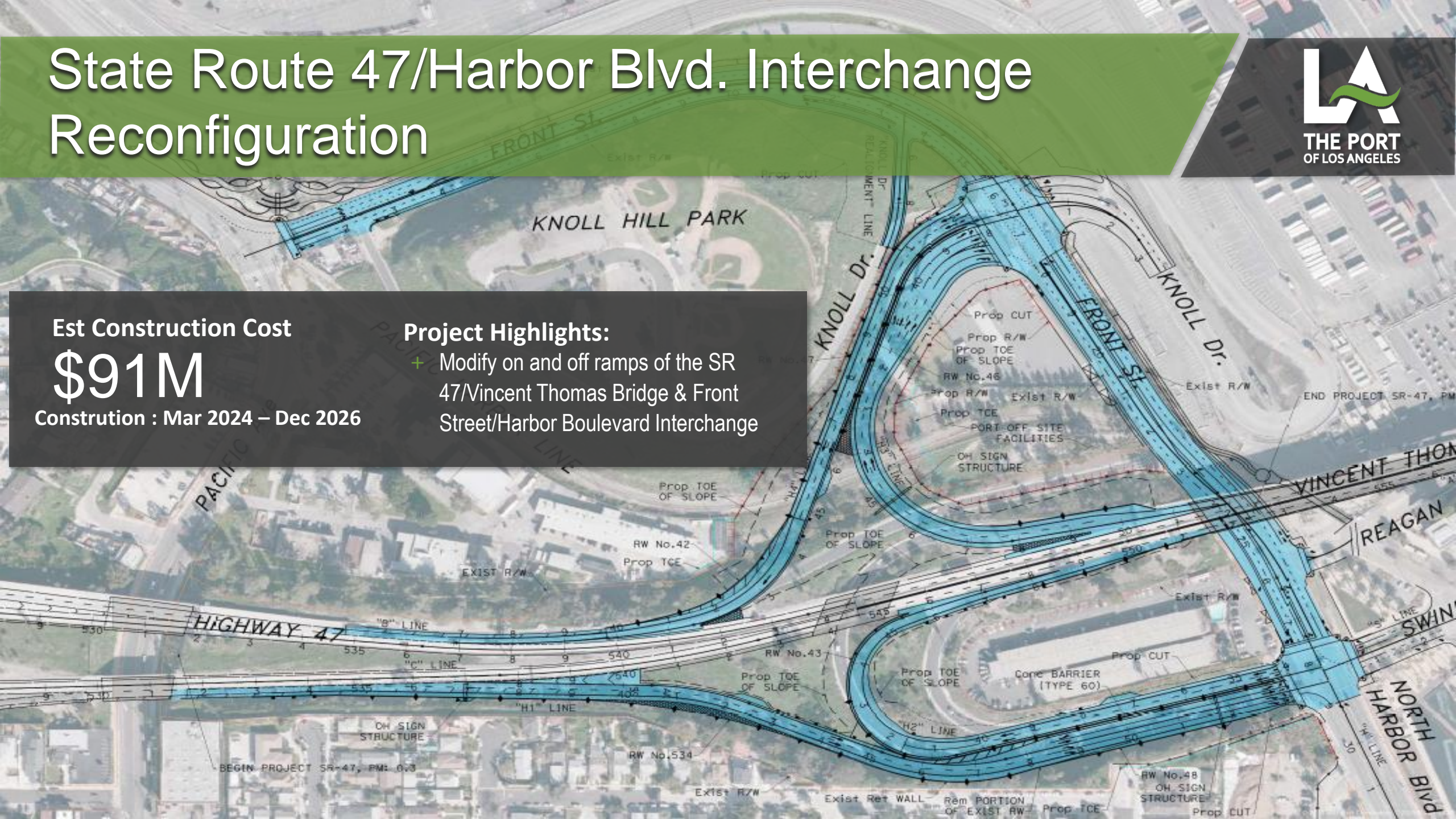
Est Construction Cost

\$91M

Construction : Mar 2024 – Dec 2026

Project Highlights:

- + Modify on and off ramps of the SR 47/Vincent Thomas Bridge & Front Street/Harbor Boulevard Interchange



Harbor Admin Board Room Remodel



Project Highlights:

Construction Cost: \$3.5 M

Construction: Oct 2024 – Oct 2025

- + audio/visual (A/V) equipment
- + Modify the stage area
- + Lighting
- + Improvements to conference room

Pier 300 On-Dock Rail Expansion



Project

On-Dock Rail Expansion

Schedule

Construction Start: April 2025

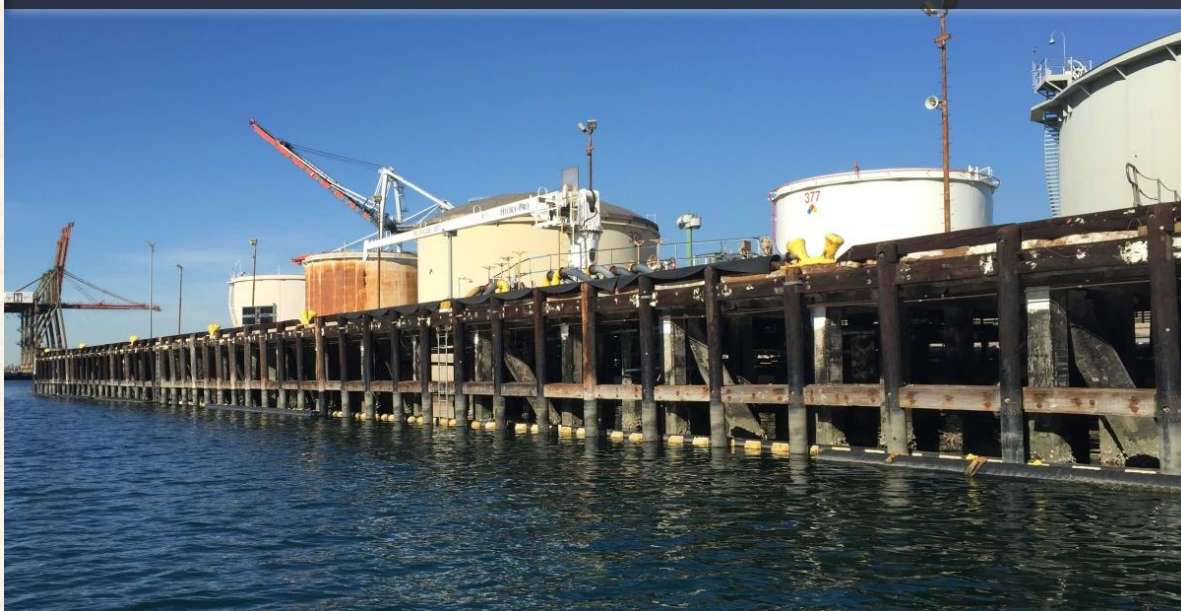
Cost

\$65 Million

MOTEMS Program

Berths 167-169 MOTEMS Phase II – Shell
Contract Amount: \$10 M
Advertise: May 2025

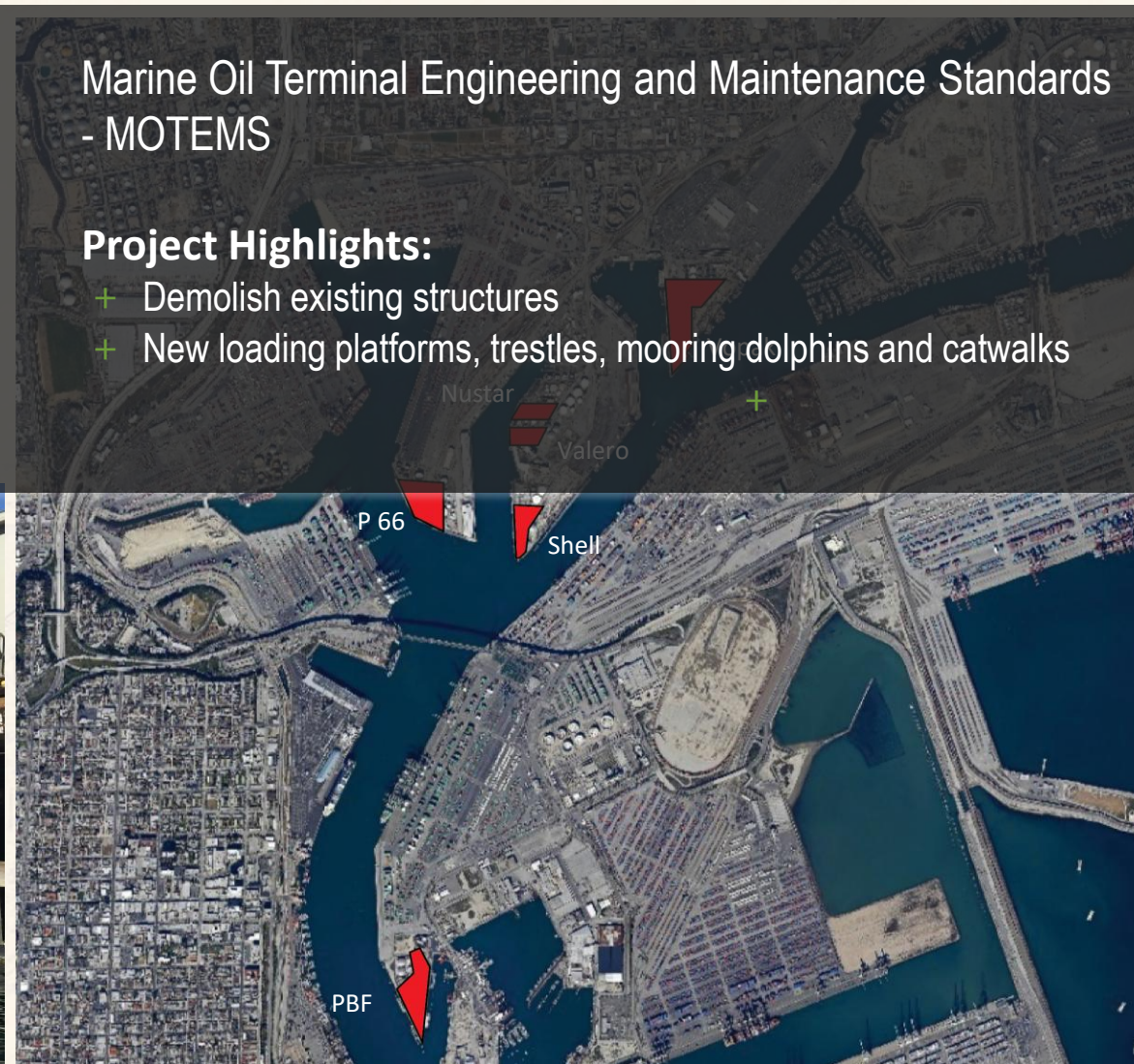
Berths 238-239 MOTEMS – PBF
Cost: \$28 M
Construction: June 2025



Marine Oil Terminal Engineering and Maintenance Standards
- MOTEMS

Project Highlights:

- + Demolish existing structures
- + New loading platforms, trestles, mooring dolphins and catwalks



Harbor Administration Building HVAC Replacement



- **Project Cost: \$19.5M**
- **Advertise: April 2025**

- City Council Motion (CF 21-1039)
- Building De-carbonization Work Plan



Terminal Island Facilities Demolition

- Southwest Marine Administration Building Demolition
- Starkist Demolition
- 1025 Seaside Avenue Demolition
- South Seaside Avenue Storm Drain



Est Construction Cost: \$25 M
Advertise: May 2025

Project Highlights:
+ Demolish three existing structures on Terminal Island
+ Construct Storm Drain

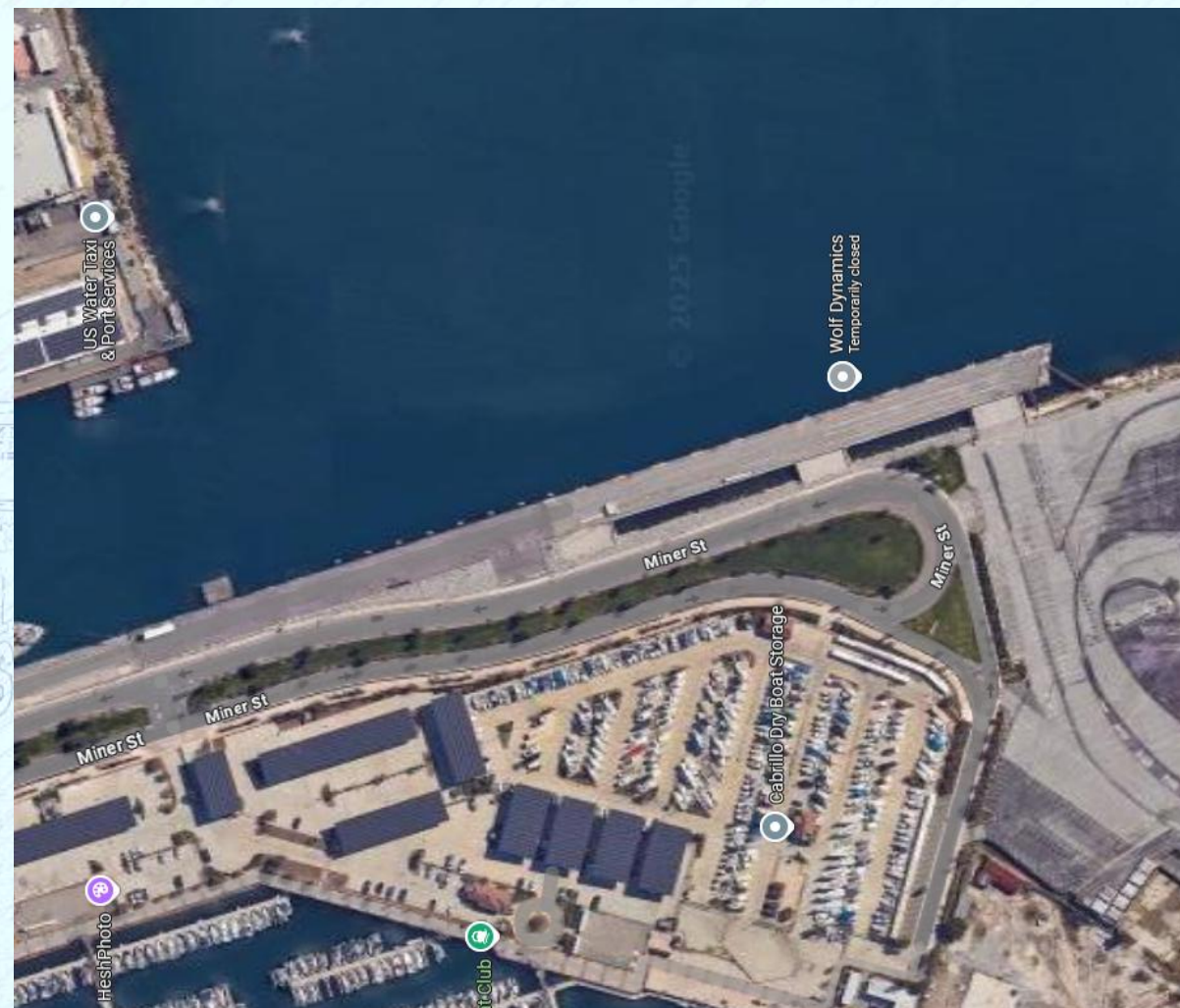
Wilmington Waterfront West End Restroom and Site Restoration



- **Estimated Const. Cost: \$6.0M**
- **Advertise: October 2025**

Berths 49-51 Outer Harbor Cruise Development

- **Project Cost: \$57.3M**
- ***Advertise: July 2025***



TERMINAL ISLAND RAIL GRADE SEPARATION (TIGS)



Four-lane Grade Separated Roadway over POLA mainline rail tracks connecting Terminal Island, Ferry St, and P300 to the TI Maritime Support Facility

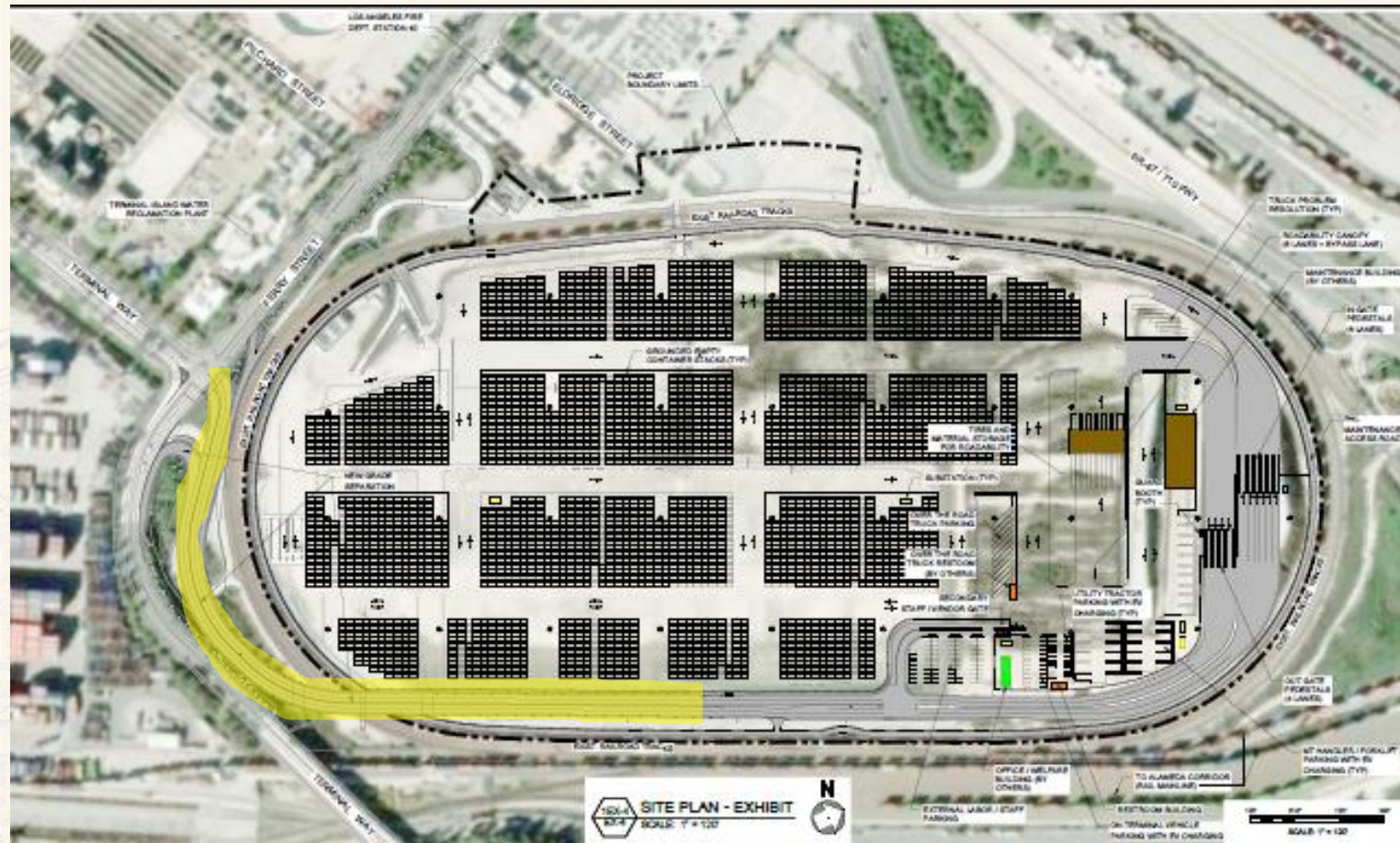
Structure 2,000ft roadway structure, foundation and retaining wall

Intersection Modifications traffic signal re-signalizations

Project Cost: \$32 M

Advertise: March 2026

TERMINAL ISLAND RAIL GRADE SEPARATION (TIGS)



Four-lane Grade Separated Roadway over POLA mainline rail tracks connecting Terminal Island, Ferry St, and P300 to the TI Maritime Support Facility

Structure 2,000ft roadway structure, foundation and retaining wall

Intersection Modifications traffic signal re-signalizations

Project Cost: \$32 M

Advertise: March 2026

Terminal Island Maritime Support Facility (TIMSF)

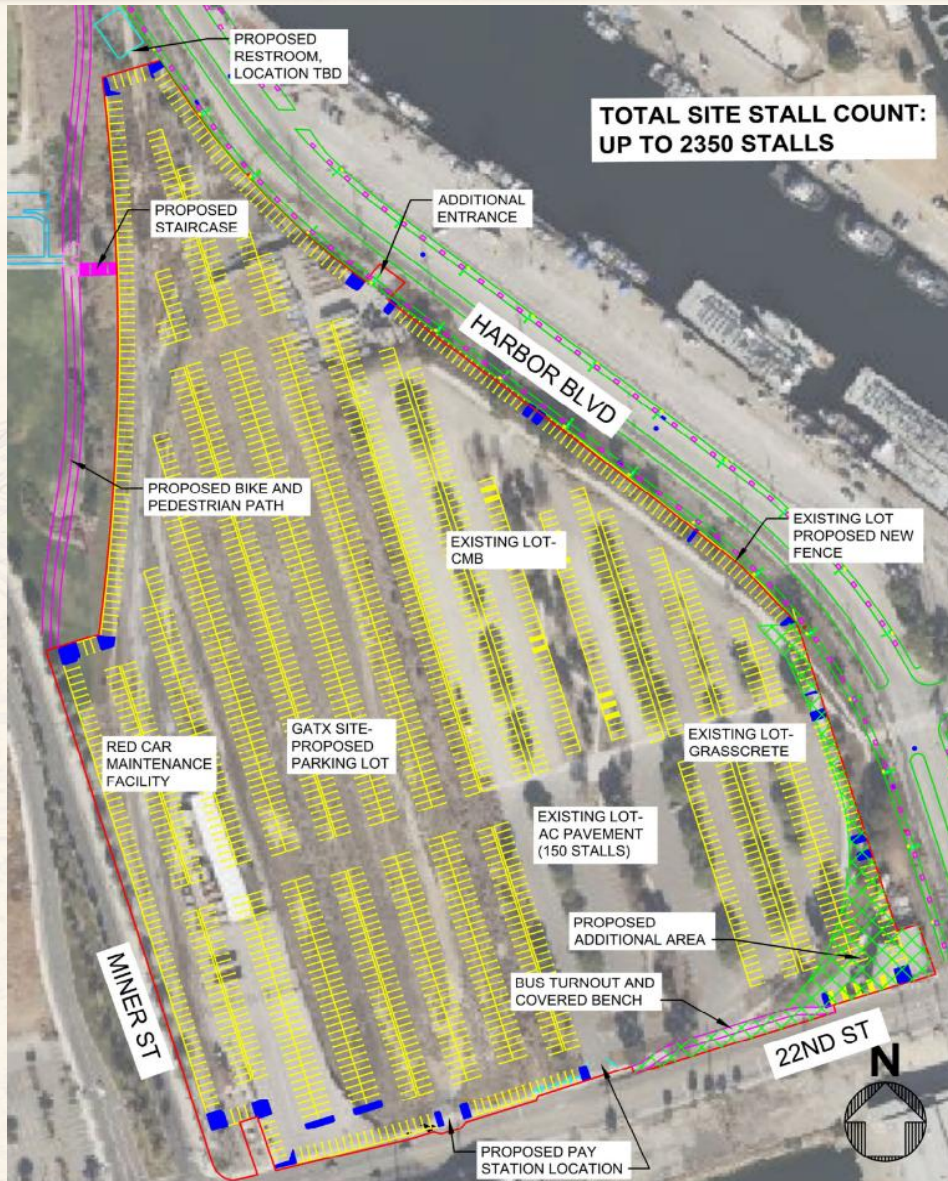


Develop approximately 80 acres for cargo support facility

Improvements include removals, drainage, utilities, paving, fire protection, water, electrical, site lighting, roadability canopy, restrooms, guard booths, and 1,000' access roadway

- Project Cost: \$156 M
- Advertise: April 2026

208 East 22nd St. Parking Lot Improvements



- **Develop and Redevelop approx. 21 acres** *for public parking for up to 2,350 parking stalls*
- **Improvements** *include demolition, removals, drainage, AC paving, striping, driveway modifications, site lighting, site security, fencing, security cameras, and parking kiosks*
- **Building Demolition** *of RS Marine Building*
- **Restroom Building**
- **Pedestrian Pathway**

- **Project Cost: \$32 Million**
- **Advertise: January 2026**

POLA-POLB Goods Movement Workforce Training Campus



- Total Project Cost: \$150M
- Construction: Feb 2027 – Feb 2029



THE PORT
OF LOS ANGELES

AMERICA'S PORT®

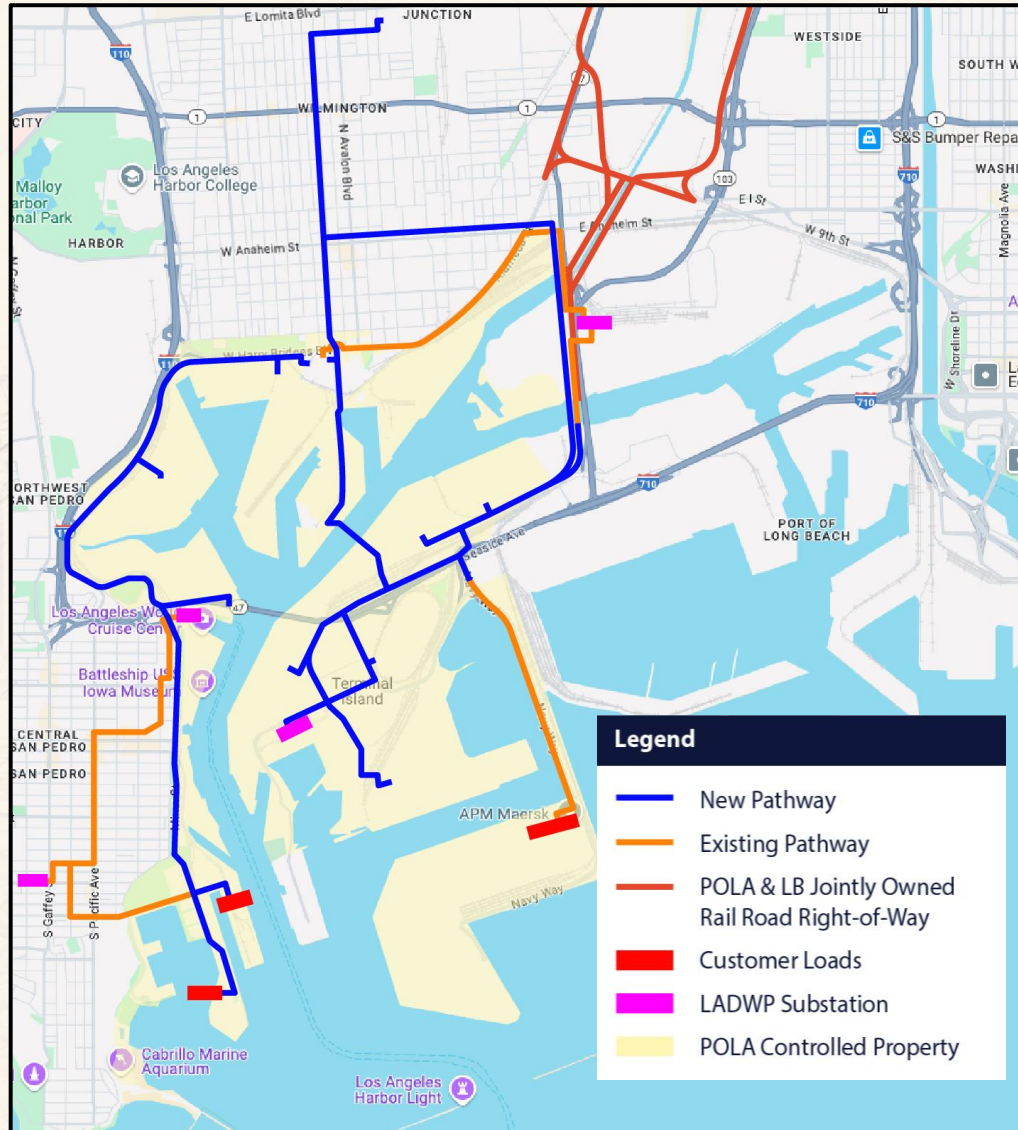
PLANNING for ZERO EMISSION PORT OPERATIONS

- Total Project Cost: \$500M

EPRI Report (2023) funded by LADWP & POLA

- To assess the extent of current electrification efforts for zero emissions cargo handling equipment
- To identify electrification opportunities in order to achieve emission reduction goals by 2030 & 2035
- To identify improvements required to meet the new electrification loads
- To provide a roadmap for LADWP, POLA & Port Operators

Zero Emissions Port Electrification & Operations (ZEPEO)



- **Expand LADWP's RS-C and RS-Q Receiving Stations**
 - Adds at least 200MW for POLA
 - Increases Power Reliability and Redundancy
- **New Switching Station in Wilmington**
 - Increases Power Reliability and Redundancy
- **New 34.5kV Distribution Lines**
 - Distributes Power to each Marine Terminal
- **New Network Stations at each Marine Terminal**
 - Adds at least 20 MW Power at each Terminal
 - Receives 34.5kV Distribution Lines

- **Project Cost: \$500 M**
- **Advertise: 2027**

Costruction Management Professional Services

- Avalon Pedestrian Bridge & Promenade Gateway – May 2025
- TIMS and TIGS – October 2025
- On-Call Construction Management Services – January 2026
 - Five Contracts
 - Five year duration
 - Five Million each

Project Labor Agreement



Included in Capital Improvement Construction contracts

Agreement has a 10-year term – expires 2027

Requires the contractor to provide a Jobs Coordinator

Addresses work stoppages, strikes and lockouts

Project Labor Agreement



Requires:

- 30% of total labor hours performed by Local Residents
- 20% of total labor hours performed by Registered Apprentices
- 50% of Apprenticeship labor hours performed by Local Residents
- 10% of total labor hours performed by Transitional Local Residents

Small Business/Very Small Business Enterprise SBE/VSBE



Encourage the small business community to do business with the Port

**Overall goal: 25% Small Business Enterprise (SBE) participation
 5% Very Small Business Enterprise (VSBE) participation**

**SBE/VSBE participation requirements for each contract are set on a
project-by-project basis for construction contracts**

Proprietary Small Business Enterprise Certification



Complete Proprietary Small Business Enterprise Application on [RAMP](#)

SBE (Proprietary) certification is applicable to the three Proprietary Departments

- Harbor – Port of Los Angeles
- LAWA – Los Angeles World Airports
- DWP – Department of Water and Power

Certification is valid for two years

Local Business Preference Program

For bidders who qualify as a Local Business Enterprise (LBE) :

→ 8% preference by reducing the bid by 8%

Bidders who are not a LBE may receive a maximum 5% preference for using LBE subconsultants

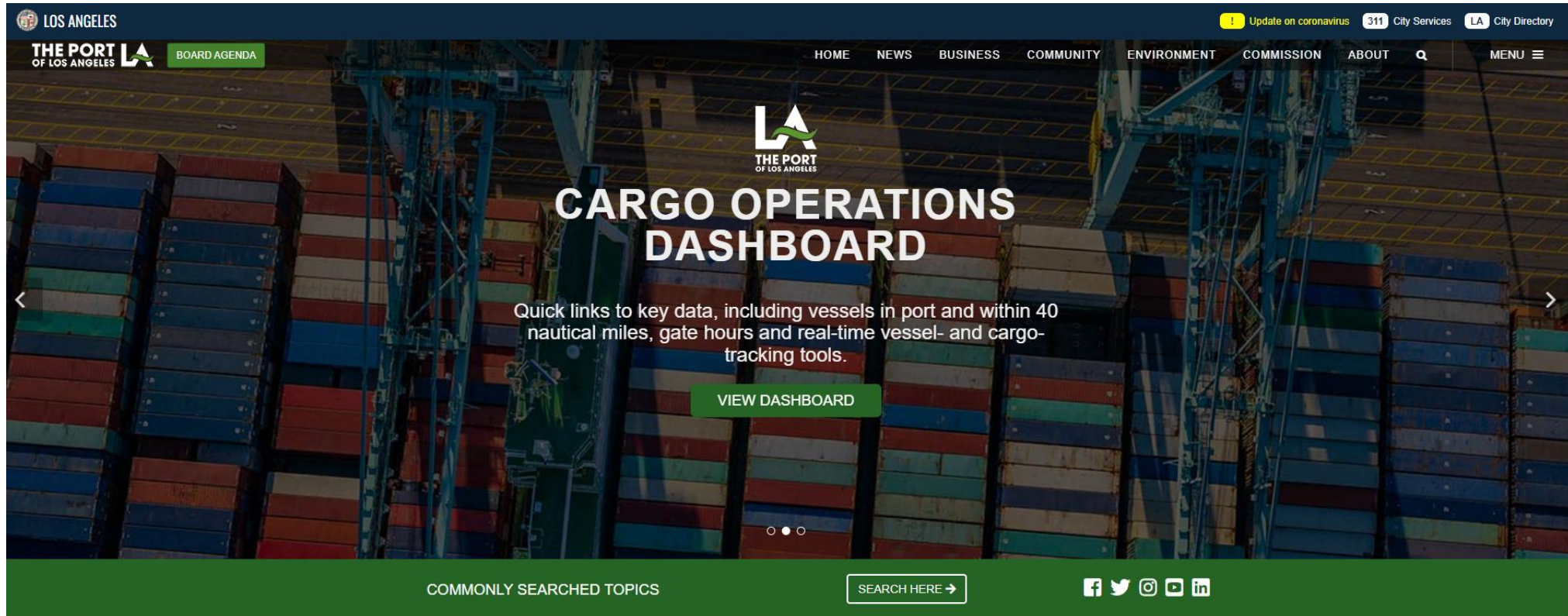
→ 1% preference, up to a maximum of 5%,
for every 10% of work that is subcontracted to a LBE

	Non-local Firm	Local Firm A	Local Firm B
Original Bid	\$10,500,000	\$11,000,000	\$12,750,000
8% Preference	N/A	(\$880,000)	(\$1,000,000) *
Final Bid	\$10,500,000	\$10,120,000	\$11,750,000

*Maximum Preference

In the example above, Local Firm A was the lowest bidder after applying the local preference. Although the final bid amount is \$10,120,000, Harbor Department would award a contract based on the original bid in the amount of \$11,000,000. Harbor Department would have expended \$500,000 more on the project as a result of the local preference, when compared to the bid submitted by the non-local firm.

Periodically check the Port's website...



Welcome to America's Port[®]

The busiest container port in North America, the Port of Los Angeles has sustained its rank as number one for more than two decades with record volumes for containerized trade. The Port maintains an efficient, sustainable supply chain, adopting new technologies to improve the reliability, predictability and efficiency of the flow of cargo across global

<https://www.portoflosangeles.org>

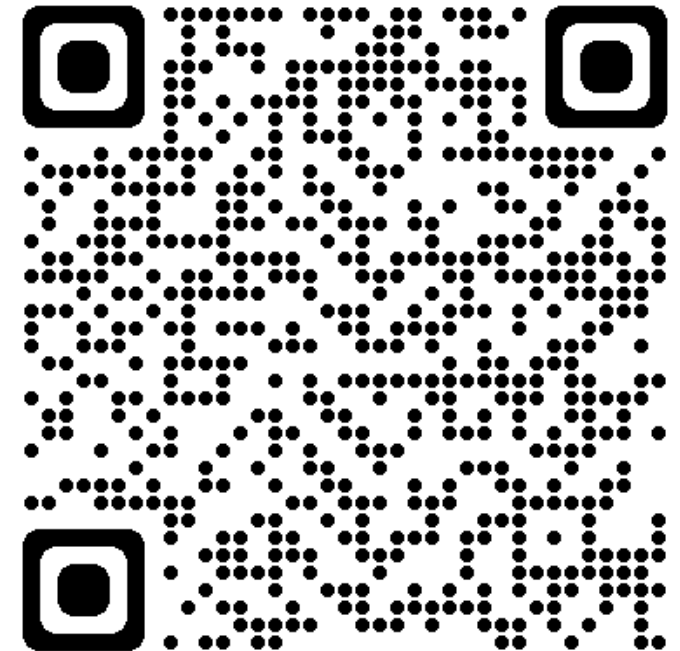
Regional Alliance Marketplace for Procurement (RAMP)



Register to receive notifications of upcoming opportunities

[RAMP](https://www.rampla.org/s/)

<https://www.rampla.org/s/>

A screenshot of the RAMP website. The header includes the Los Angeles logo, the RAMP logo, and navigation links: Home, Search For Opportunities, Business Profiles, Support, and a LOGIN button. A banner image shows a modern building interior with the text: "Join Regional Alliance Marketplace for Procurement (RAMP) to access contracting opportunities from regional partners." Below this is a "SEARCH FOR BID OPPORTUNITIES" section with input fields for "Opportunity" (Title or Keyword), "Category", "Status", and "Type", followed by a "Search" button. At the bottom, a teal box contains the text: "Welcome to RAMP! Forms, processes, and requirements for City of LA".

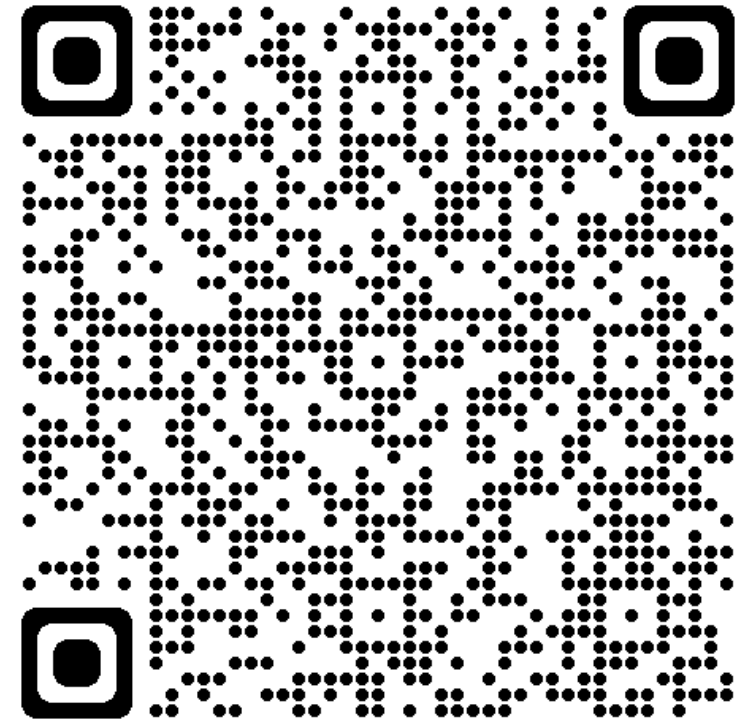
Construction Division Business Opportunity Network (CDBON)



Visit

Construction Bids | Contracting
Opportunities | Port of Los Angeles

for information on competitive bids,
Project Labor Agreements, and
information on doing business with the
Port.



Construction Division Business Opportunity Network (CDBON)



Port of Los Angeles CDBON

Vendor Portal



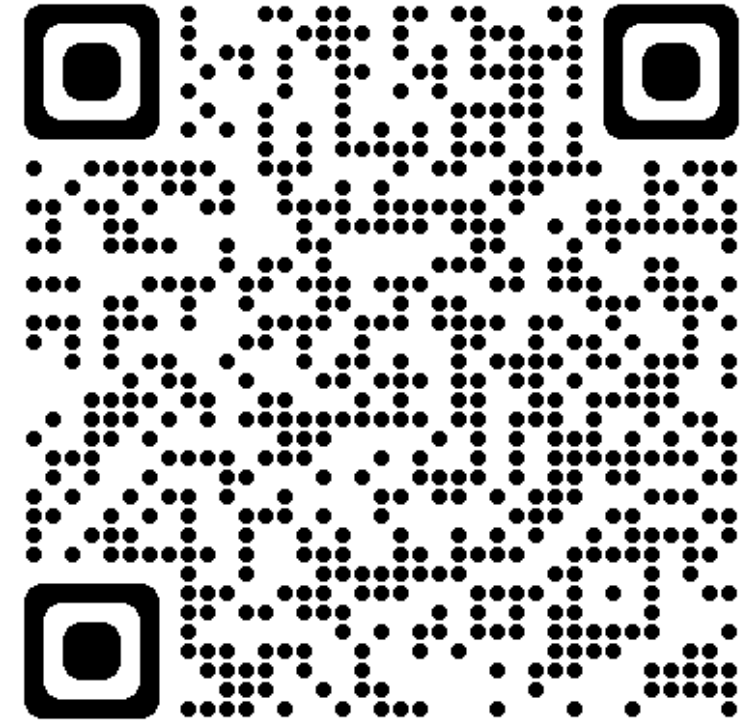
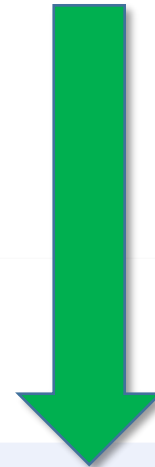
NEW VENDOR REGISTRATION

Create a new vendor record.
If you wish to view or edit an existing vendor,
simply Log In.



BID OPPORTUNITIES

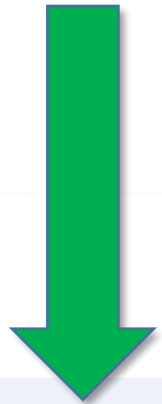
Search and bid electronically on opportunities
with this agency, download documents, and
become a prospective bidder.



Construction Division Business Opportunity Network (CDBON)



[PlanetBids Vendor Portal](#)



Port of Los Angeles CDBON Vendor Portal



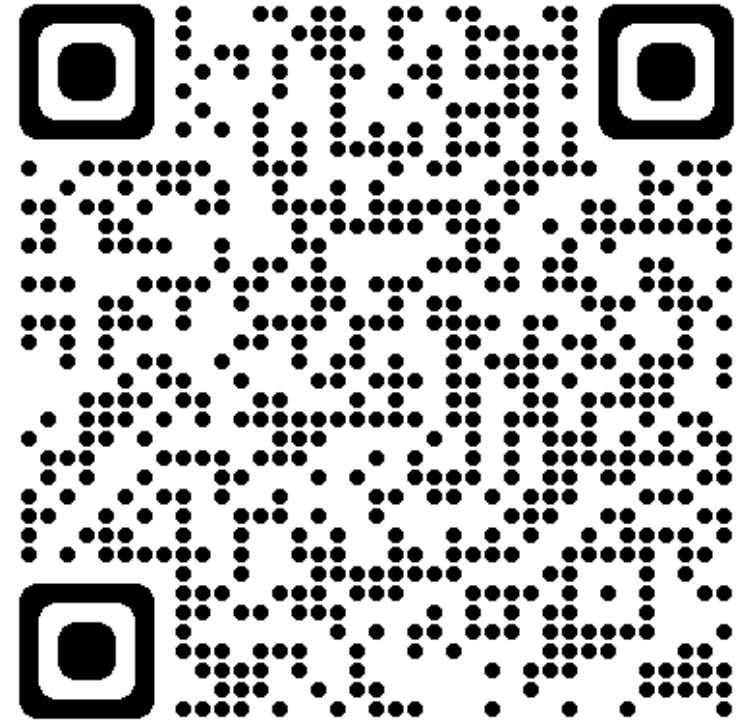
NEW VENDOR REGISTRATION

Create a new vendor record.
If you wish to view or edit an existing vendor,
simply Log In.



BID OPPORTUNITIES

Search and bid electronically on opportunities
with this agency, download documents, and
become a prospective bidder.





**THE PORT
OF LOS ANGELES**

Thank You!