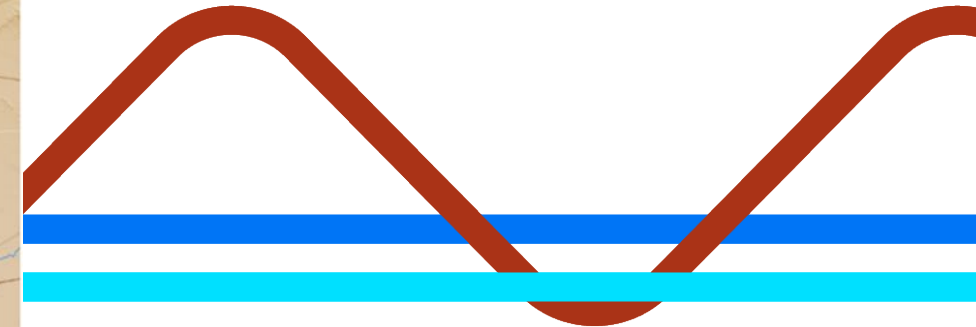




**Mojave
Groundwater
Bank**

Engineering, Procurement and Construction Status



Sept. 17, 2025



Mojave Water Bank Project - Overview

Current Status

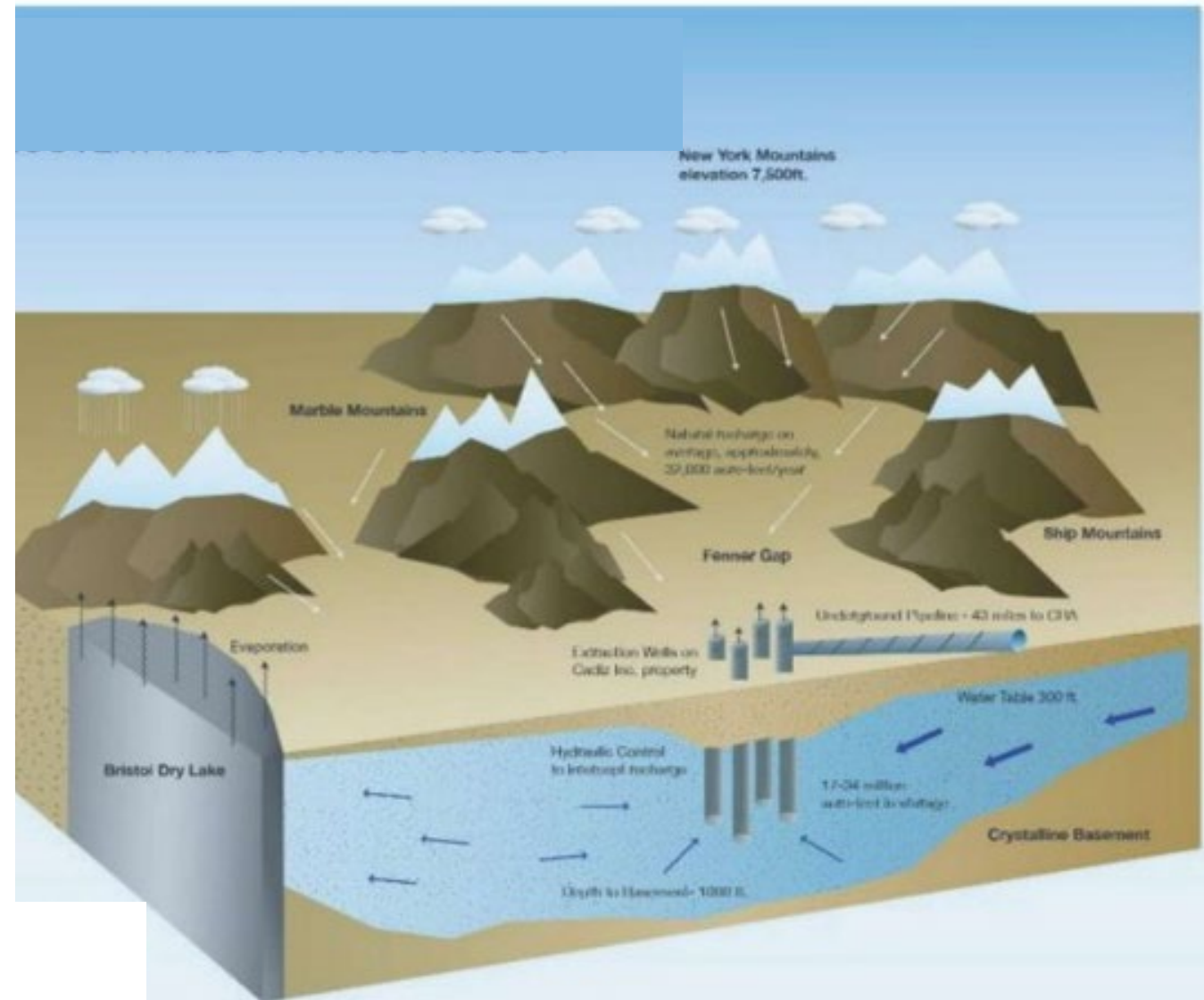
- Own 45,000 acres – 35,000 acres contiguous
- 30 to 50 MAF in Aquifer
- Watershed > 1,000 sq. miles

Supply

- Expand ag wellfield to conserve evap. water
- Water Rights for up to 2.5 million acre-feet over 50 years
- Deliver water to existing SoCal conveyance facilities

Storage

- Total Storage > 1 MAF
- Bidirectional pipelines
- Recharge Using Spreading Basins & ASR Wells



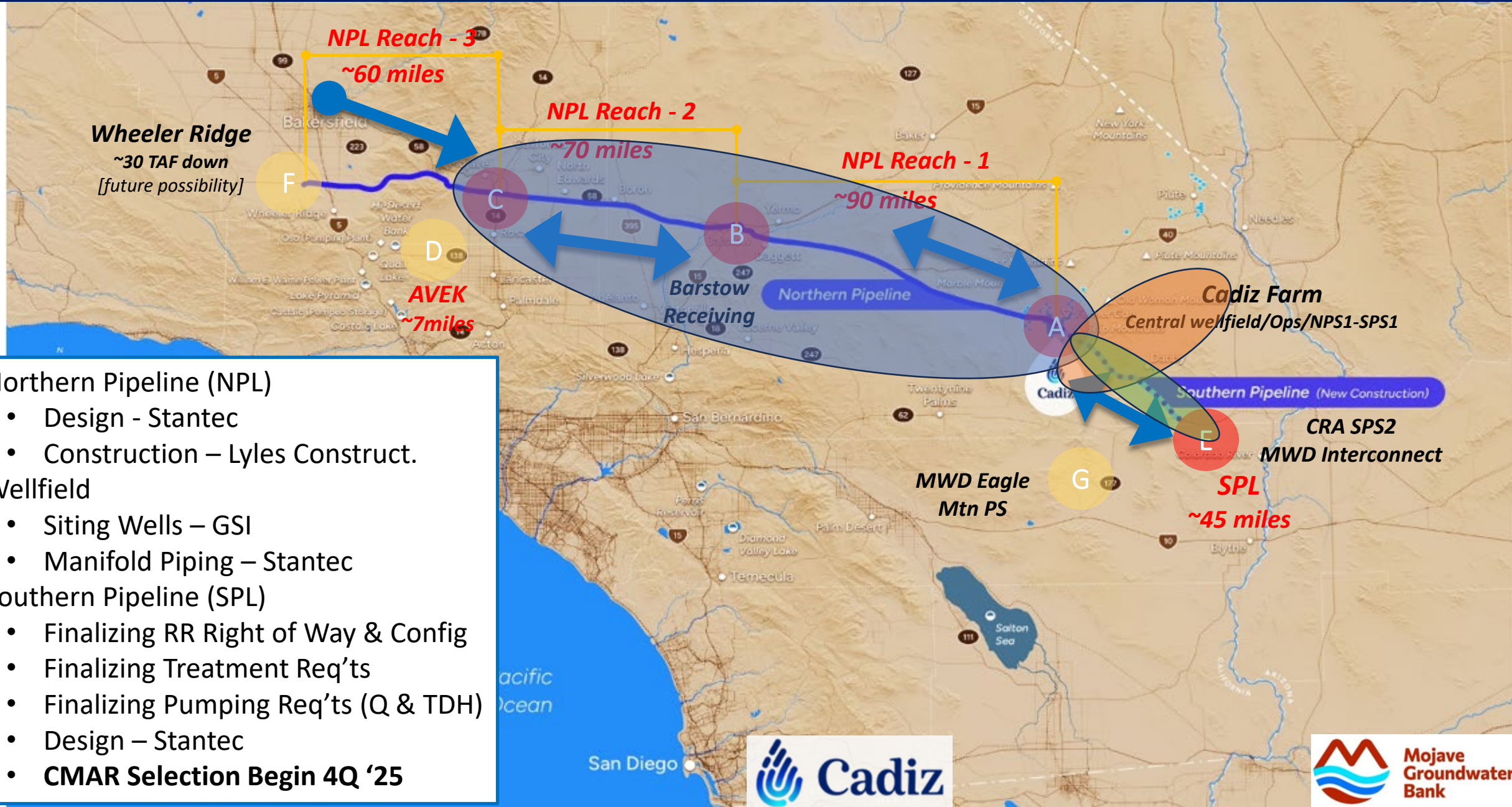
Mojave Water Bank Project - Objectives

Phased Development to Convey Cadiz Conserved Groundwater to Off Takers

- **North Pipeline (NPL)** - 25,000 AFY Bi-directional Flow Capability to Barstow/Kern County/possibly Wheeler Ridge
 - 6-7 Medium – High Pressure Pump Stations
 - Pipeline Rehab/Repl. of ~ 17 miles of 30" Pipeline
 - Coordination w/ Power Island Supplier
- **Southern Pipeline (SPL)** - 25,000 AFY to 150,000 AFY to CRA System
 - Majority of Work - Install Prepurchased (4) 36" Steel Pipelines ~ 43 miles
 - Southern Pump Station 1, CRA Pump Station
 - Treatment (If Necessary)
- **Well Field Improvements**
 - Necessary on-Farm Wellfield/Pumping Mods. ~ 44 Additional Wells
 - Individual or Combined Power Islands
 - Collection System Pipe Manifold(s)
 - Spreading Basins
- **Maintain Current Farm Ag Ops While Accommodating Off-taker Demands**



Mojave Water Bank Project - Program

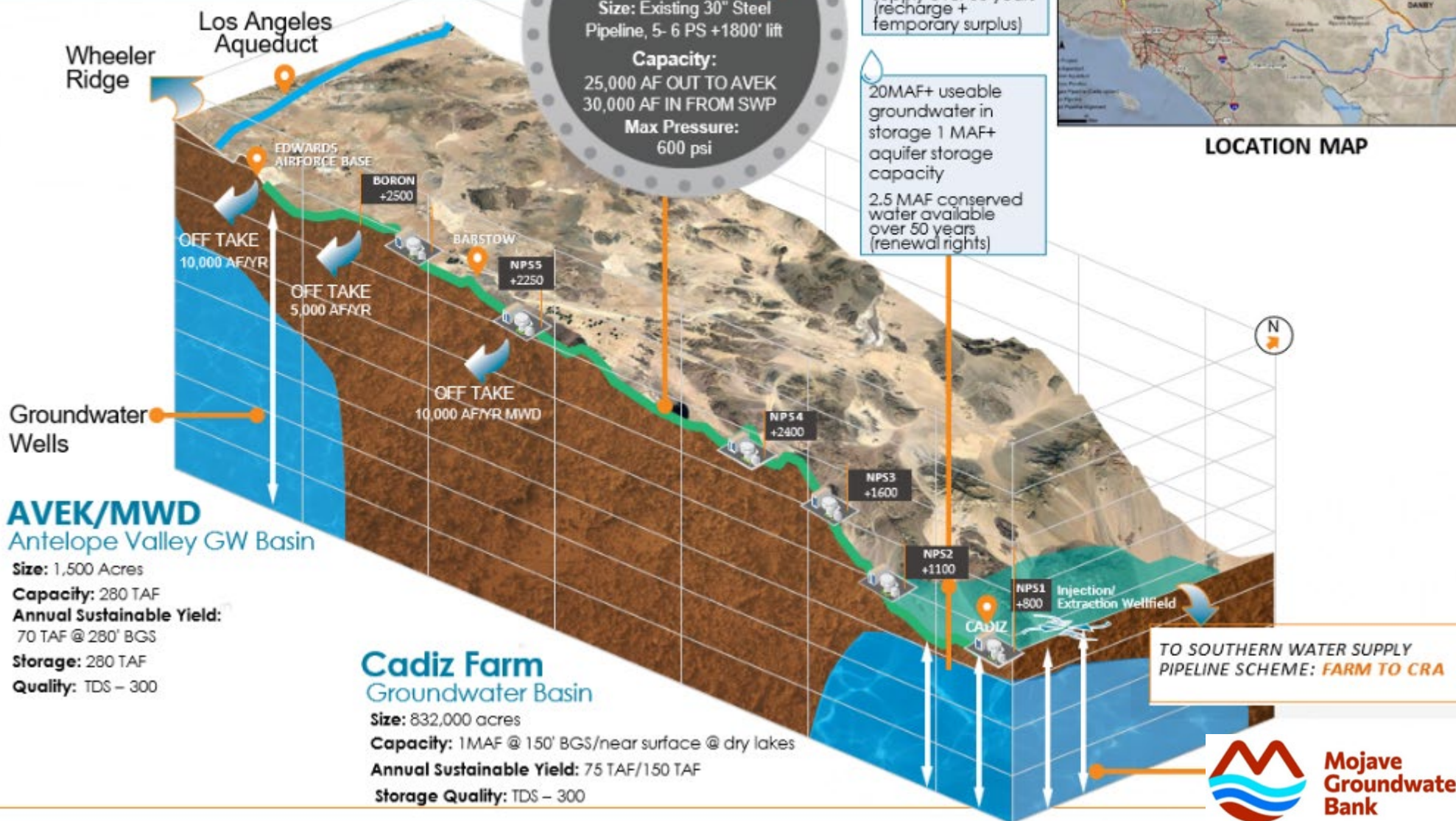


- Northern Pipeline (NPL)
 - Design - Stantec
 - Construction – Lyles Construct.
- Wellfield
 - Siting Wells – GSI
 - Manifold Piping – Stantec
- Southern Pipeline (SPL)
 - Finalizing RR Right of Way & Config
 - Finalizing Treatment Req'ts
 - Finalizing Pumping Req'ts (Q & TDH)
 - Design – Stantec
 - CMAR Selection Begin 4Q '25

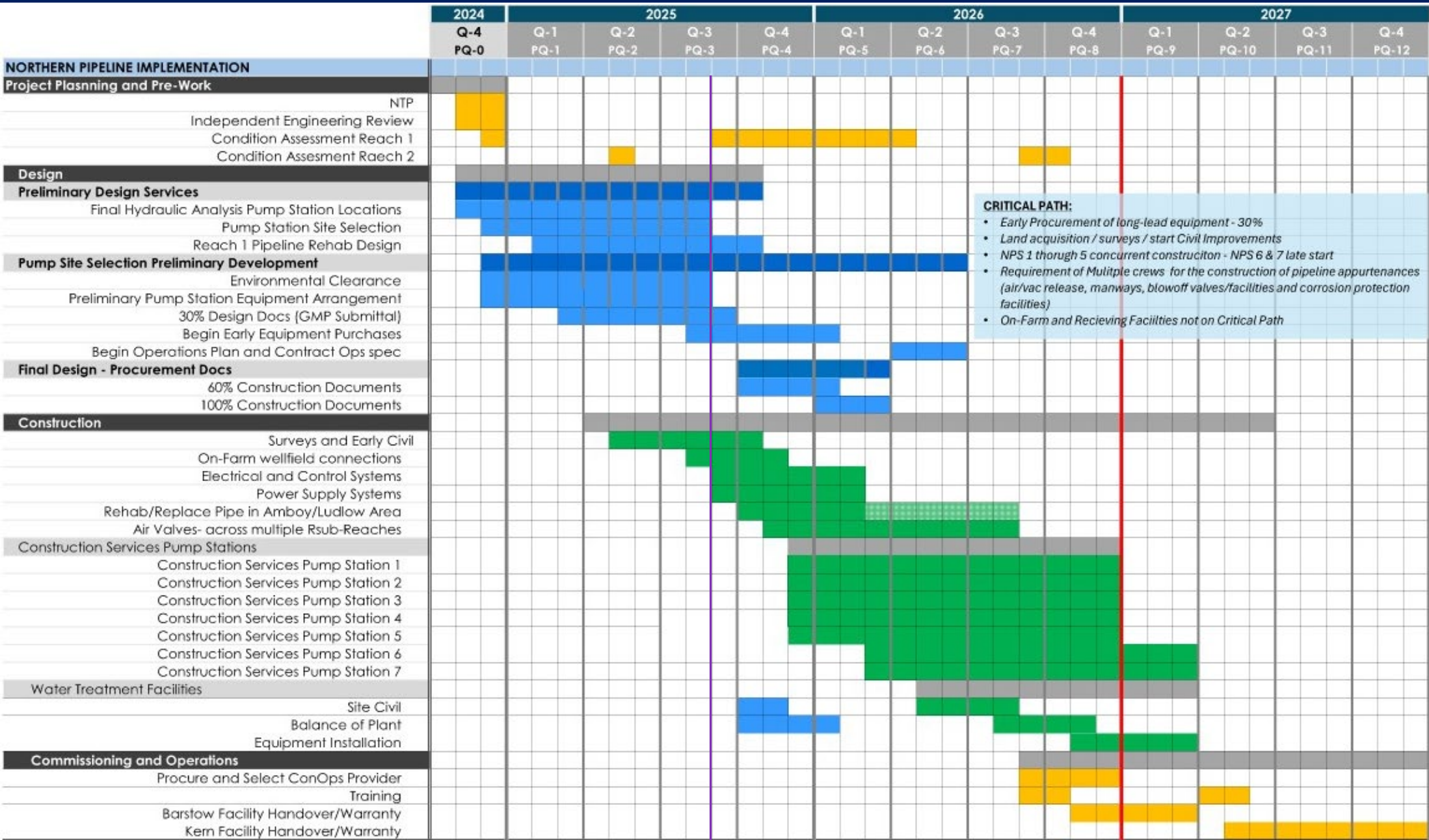
Mojave Water Bank Project – Northern Pipeline

- Bi-directional pipeline: Cadiz expanded wellfield to Barstow R1- ~90 miles and Kern County R2~160 miles
- Delivery capacity 25 TAF
- Conveyed in existing repurposed 30" O&G pipeline-1988
- Possible Treatment on-Farm or at Barstow

NORTHERN WATER SUPPLY PIPELINE FARM to Barstow/AVEK/MWD



Mojave Water Bank NPL Project - Schedule



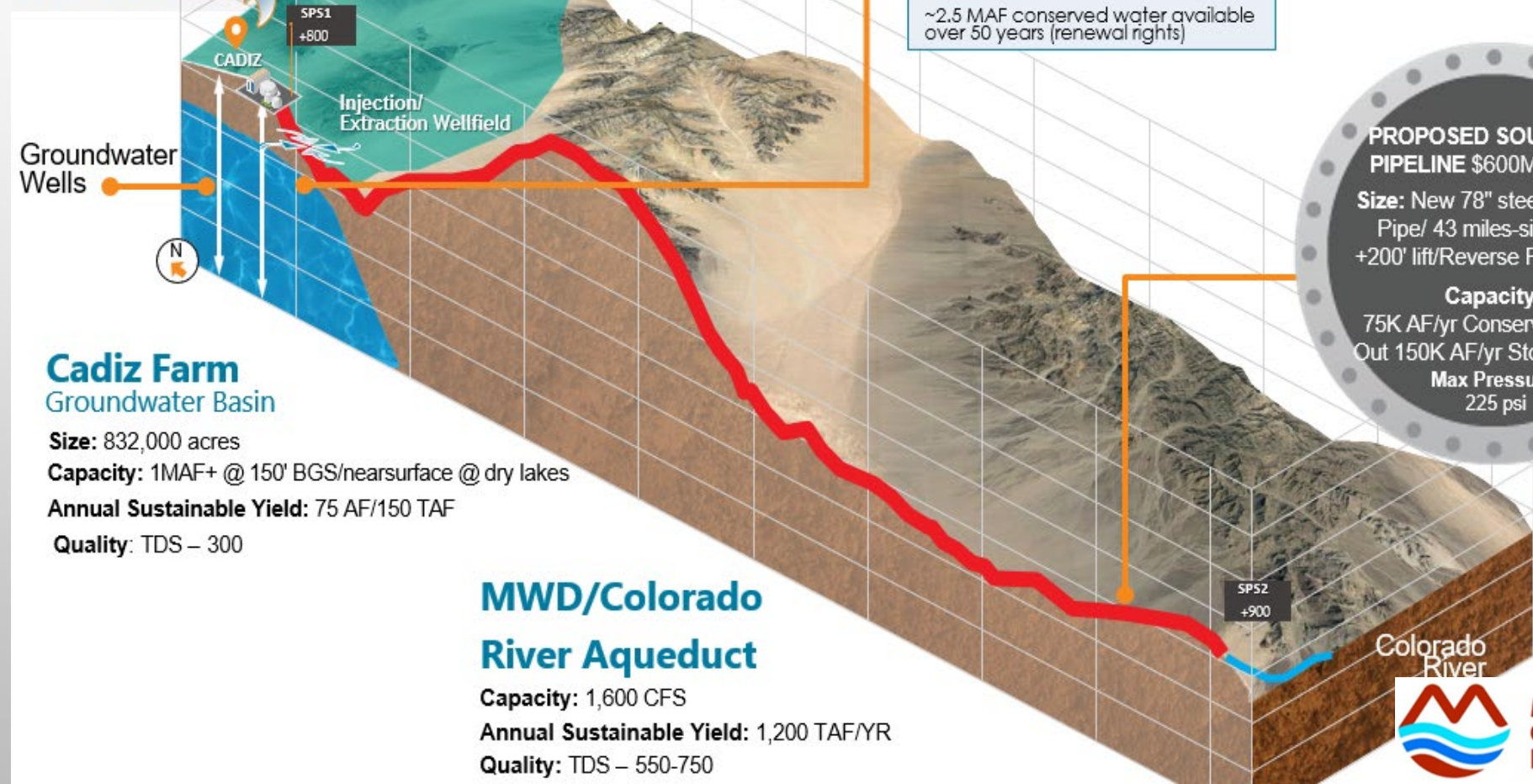
Mojave Water Bank Project – Southern Pipeline

- Bi-directional pipeline: Cadiz expanded wellfield to CRA near Iron Mtn PS- ~43 miles
- Focus on 150 TAF/year capacity
- Inside existing RR RoW
- Coordination w/ MET, interconnect and treatment
- Explore: 4bbl ~36" or single 78" pipeline

■ SOUTHERN WATER SUPPLY PIPELINE **FARM to CRA**

TO NORTHERN WATER SUPPLY PIPELINE SCHEME:

■ **FARM TO ANTELOPE VALLEY BASIN**



Cadiz Farm Groundwater Basin

Size: 832,000 acres
Capacity: 1MAF+ @ 150' BGS/nearsurface @ dry lakes
Annual Sustainable Yield: 75 AF/150 TAF
Quality: TDS – 300

MWD/Colorado River Aqueduct

Capacity: 1,600 CFS
Annual Sustainable Yield: 1,200 TAF/YR
Quality: TDS – 550-750



Hydrological Stats for natural recharge

= 50KAF sustainable supply over 50 years (recharge + temporary surplus)



GW Basin Stats:

20MAF+ useable groundwater in storage
 1 MAF+ aquifer storage capacity
 ~2.5 MAF conserved water available over 50 years (renewal rights)



LOCATION MAP

PROPOSED SOUTHERN PIPELINE \$600M/36 MO
Size: New 78" steel or 4x36" Pipe/ 43 miles-single PS +200' lift/Reverse PS at CRA

Capacity:
 75K AF/yr Conserved Water
 Out 150K AF/yr Stored Water
Max Pressure: 225 psi

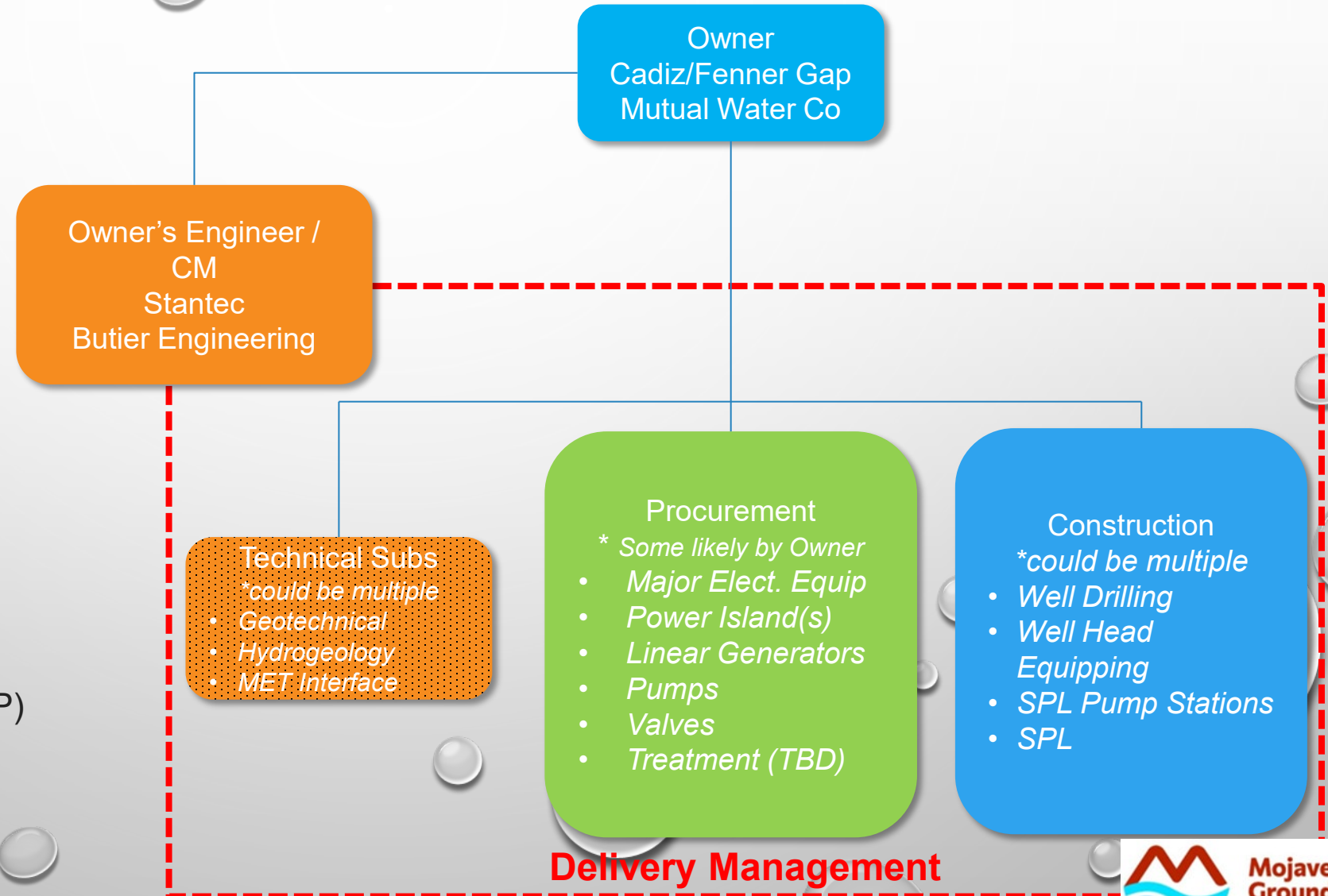
Mojave Water Bank Project - Delivery Approach

Management

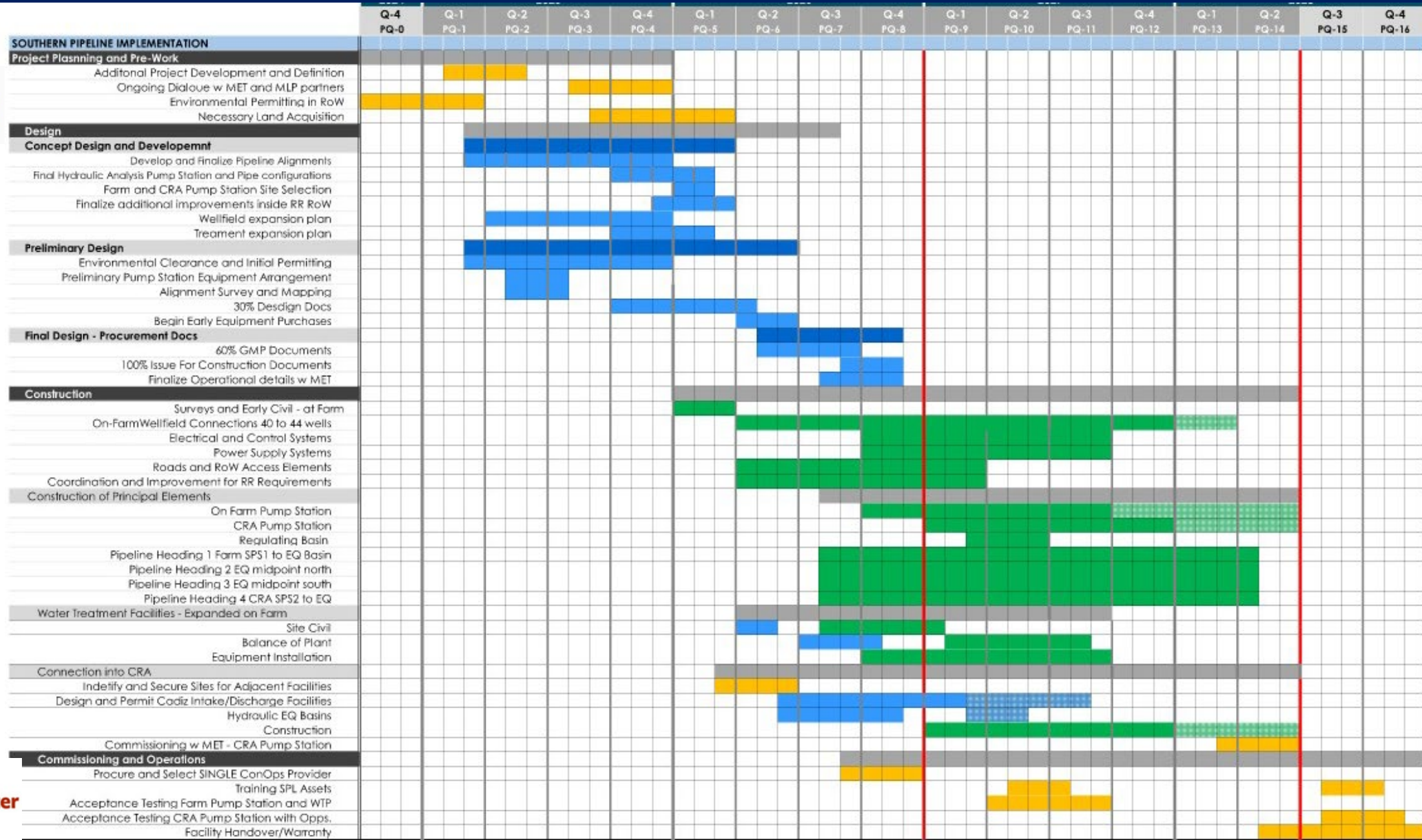
- Cadiz hires OE/CM to Plan, Sequence and Oversee Construction

Contracting

- Cadiz Contracts Directly for:
 - Detailed Engineering - Stantec
 - Select Equipment/Materials Procurement
 - 1 to 3 CMAR(s)
 - NPL - Lyles
 - Well Field Improvements
 - SPL - TBD
 - Guaranteed Maximum Price (GMP)



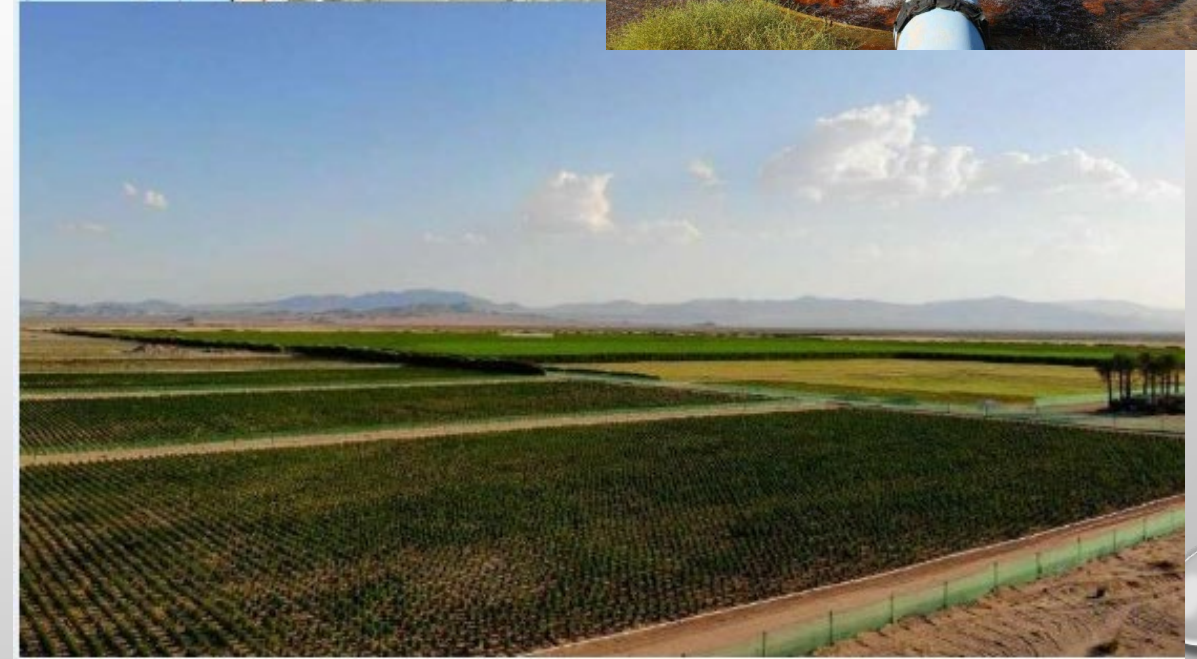
Mojave Water Bank Project – SPL Schedule



Mojave Water Bank Project – Summary

- Northern Pipeline ~ \$250 million
- Southern Pipeline ~ \$600 million
- Project Labor Agreements in Place
- Finalizing Off Take Agreements
- Programmatic FEIR – Approved
- Finalizing Project CEQA For Storage
- Final Design Begins Q4 '25
- Solicit CMAR's Q4 '25 – Q1 '25

Contact:
Don Bunts
dbunts@cadizinc.com
(760) 533-4086
(213) 271-1600



Questions

Contact
Don Bunts – dbunts@watersynergy.org
(760) 533-4086

