



# SR 11 / OTAY MESA EAST

PORT OF ENTRY

Maria Rodriguez Molina, SANDAG Director of Mega Projects, Border and Goods Movement  
Nikki Tiongco, Caltrans South San Diego County and Trade Corridor Director  
Construction Network  
September 18, 2025

# Presentation Summary



Otay Mesa East Port of Entry  
Project Overview



Project Team Overview



Schedule and Next Steps



Current Landscape



# Otay Mesa East Port of Entry Project Overview



# New State-of-the-Art Border Crossing



- User Fee Model
- Dynamic Tolling with 20-30 minutes wait time
- Technology to increase throughput and scan 100% of vehicles
- Dedicated access roads
- Unconditional gift to U.S. Government

# Project Benefits and Innovative Features



With a goal of **net zero emissions by 2035**, the new port of entry will be clean, green, and smart. The facility aims to produce its own energy and recycle its own water and waste to reduce its carbon footprint and maximize operational efficiencies.



An **advanced traveler information system** will inform border crossers about toll rates, border wait times, special lane conditions, and incidents at all regional land ports of entry.



An **integrated operations system** will intelligently link traffic operations. This seamless system will be instrumental in meeting the **20-minute average wait time goal**.



**REDUCE GREENHOUSE GAS EMISSIONS**



**REDUCE WAIT TIMES**



**FUEL ECONOMIC GROWTH**



**GOAL TO REACH NET ZERO FOOTPRINT BY 2025**



**STRENGTHEN BORDER SECURITY AND RESILIENCY**



**ENHANCE REGIONAL MOBILITY**



**BOLSTER BINATIONAL TRADE**

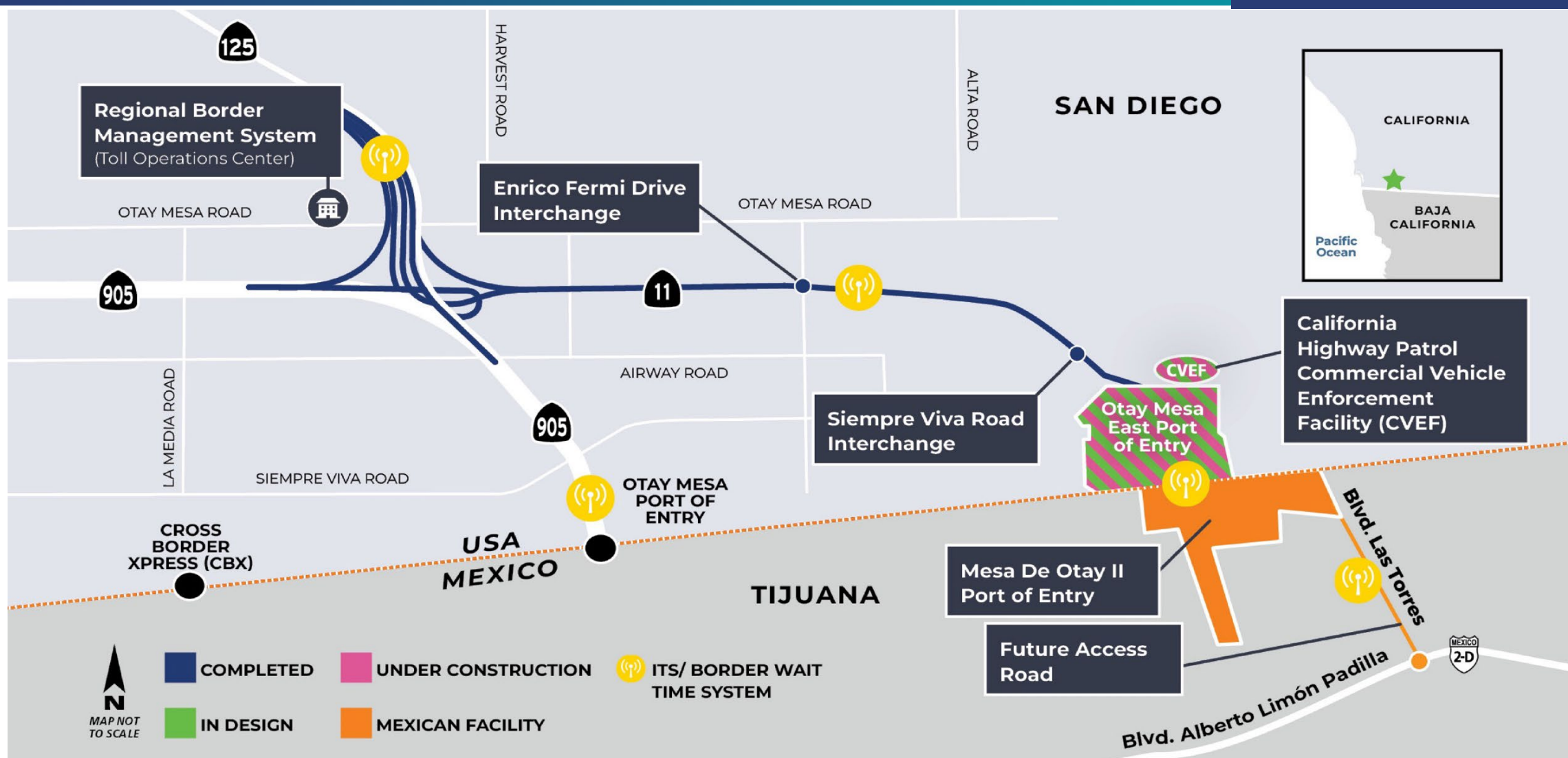


**ZEV INFRASTRUCTURE AND SERVICES**

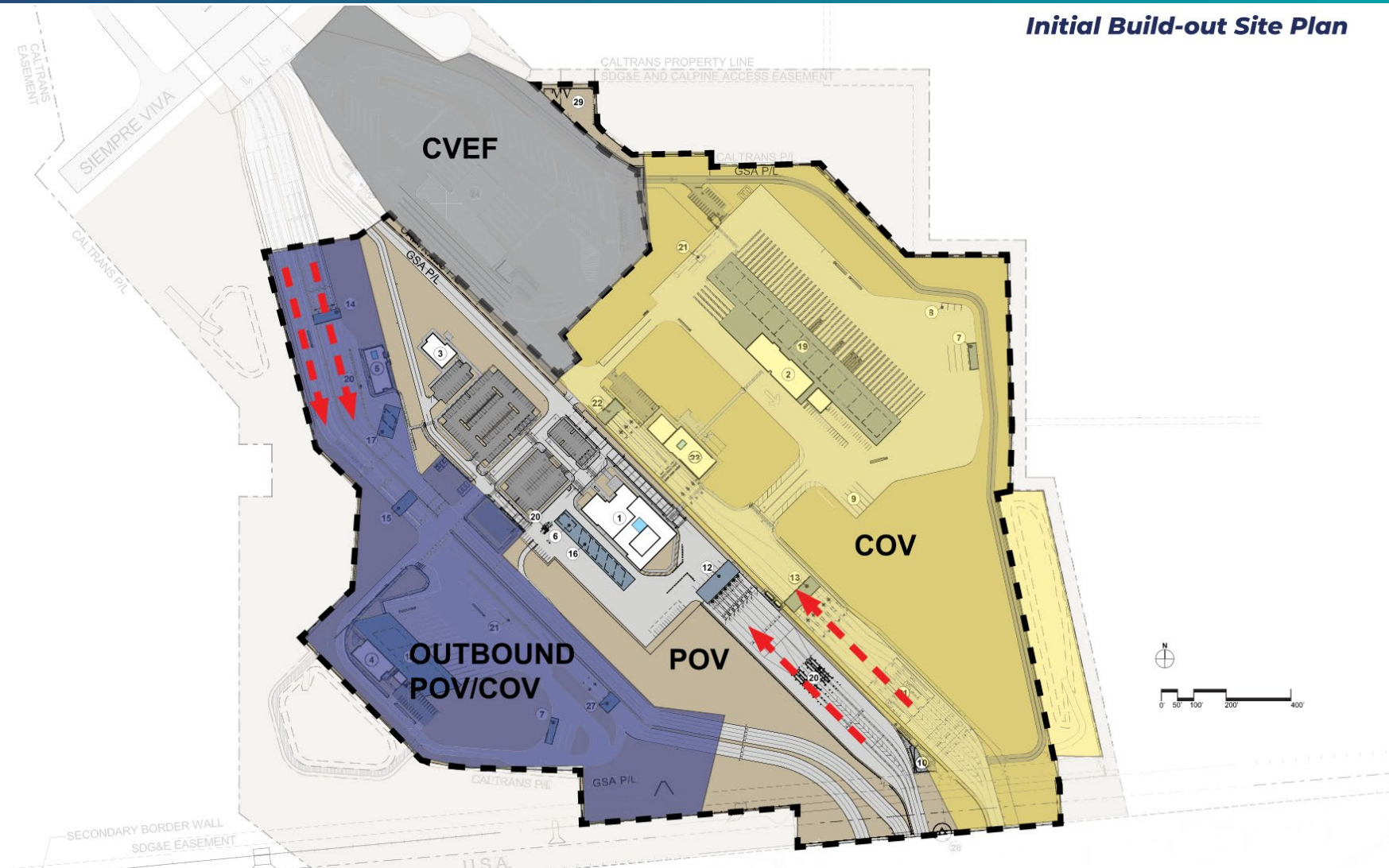


# SR 11/Otay Mesa East Port of Entry

Corridor Cost: \$1.3B



# 95% Design - Initial Build-Out Concept





# Passenger Vehicles Northbound

- Seven Primary Inspection Lanes
- Main Building and Command Center
- Secondary Inspection with 20 bays





# Commercial Vehicles Northbound

- Five Primary Inspection Lanes
- Commercial Inspection Building with 48 dock bays
- Commercial Operations Building





# Commercial Operations





# Commercial Inspection Building





# Commercial Vehicle Enforcement Facility (CVEF)





# Passenger Vehicles Southbound

- Three Primary Inspection Lanes
- Outbound Support Building



# Commercial Vehicles Southbound

- Three Commercial Vehicle Primary Inspection Lanes
- Outbound Support Building
- Commercial Inspection Building with 16 dock bays





# Non-Intrusive Inspection (NII) Technology

- NII will increase security and improve efficiency in processing of vehicles and cargo
- Technology to be procured by SANDAG and given to CBP to operate and maintain
- Vendor to furnish, install, integrate, and provide warranty services for technology



Photo credit: <https://www.cbp.gov>

# Project Team Overview



# Project Team Overview

- Caltrans and SANDAG are the project sponsors
- POE to be gifted to Federal Government (GSA and CBP)
- Caltrans will retain CVEF
- SANDAG is administering the Construction Contract
  - Team includes employees from both agencies.

# Community Benefits Agreement (CBA) & Disadvantaged Business Enterprise (DBE)



# CBA Components

- Collective bargaining agreement between SANDAG and the San Diego County Building and Construction Trades Council – effective May 19, 2022
- **Benefits:**
  - Disadvantaged and Targeted Worker Goals
  - Flexibility for Disadvantaged Businesses
  - Open to Union and Non-Union Contractors
  - Recognizes all State and Federally approved Apprenticeship Programs



# Workforce Opportunities for Rising Centers (WORC)

- WORC is a SANDAG workforce development program that includes the following programs:

Pre-Apprenticeship Program

Community Benefits Agreement

Disadvantaged Workers Program

Targeted Workers Program

Disadvantaged Business Program

Helmets to Hardhats

- Disadvantaged Businesses (Disadvantaged Business Enterprise, Small Business, and Disabled Veteran Business Enterprise) receive additional exemptions to help level the playing field in working on SANDAG projects.



# Schedule and Next Steps

# Anticipated Project Delivery Milestones

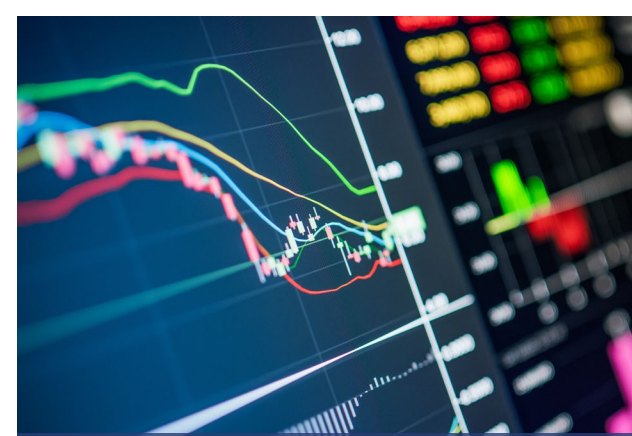




# Current Landscape



# Current Landscape



Limited funding



Increasing project costs



Increasing demand



Environmental challenges



Changing requirements



Use what we already have



Important decisions ahead



# Questions & Discussion

# Stay connected with us

 Explore our website  
**SANDAG.org/ome**

 Email:  
**sr11@sandag.org**

 Follow us on social media:

 **SANDAGregion | SDCaltrans**

 **SANDAGregion | CaltransDistrict11**

 **SANDAGregion | D11Caltrans**

 **SANDAG | SDCaltrans**