



SAN Northside Planning

Presentation to Construction Network

January 28th, 2026



SAN DIEGO
INTERNATIONAL AIRPORT

Existing Northside Facilities



Northside Planning – Focus Areas



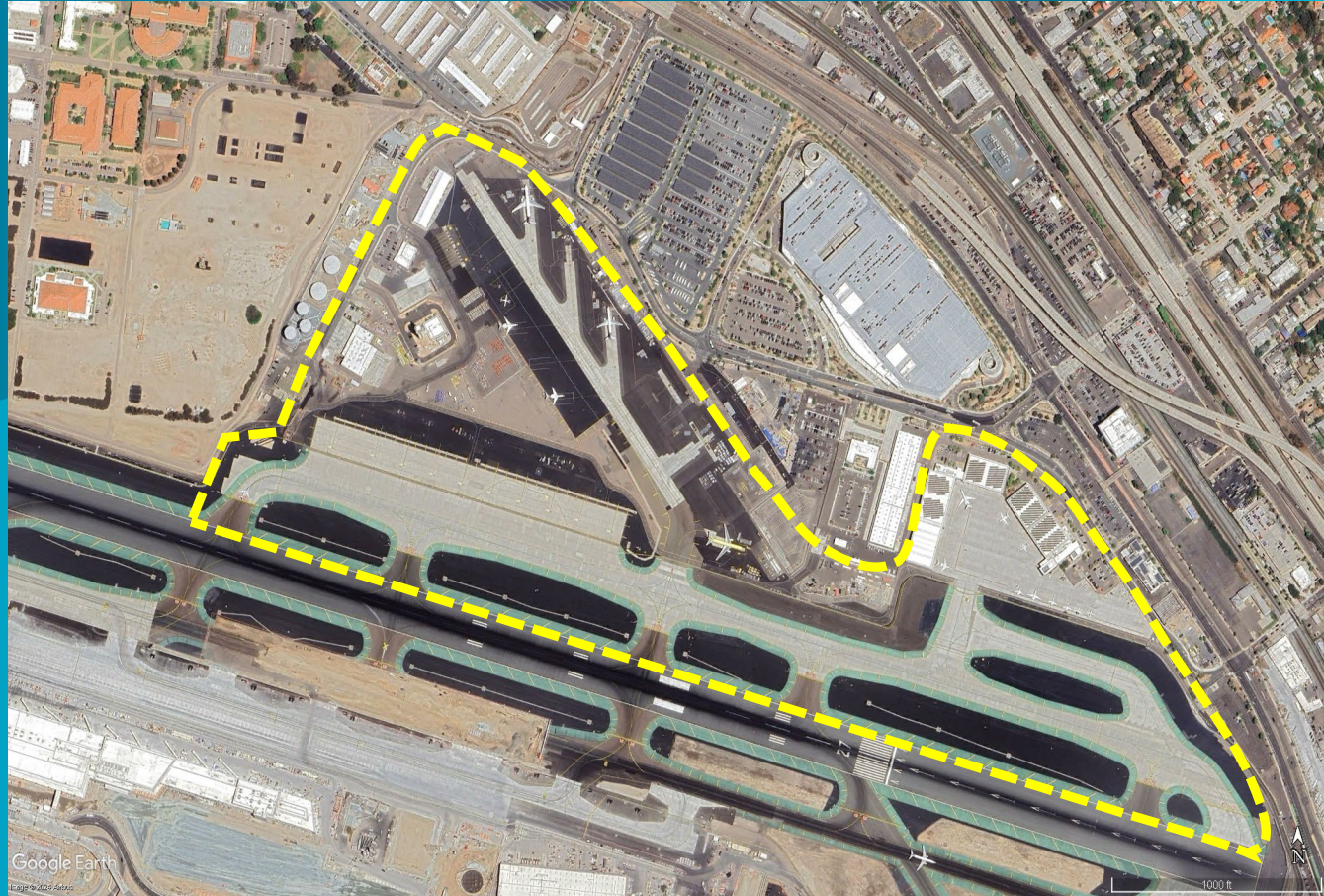
- Airside

- Taxiway System
- Aircraft Remain-Overnight-Parking (RON)
- Cargo Facilities/Operations
- Air Traffic Control Tower
- Ancillary Facilities

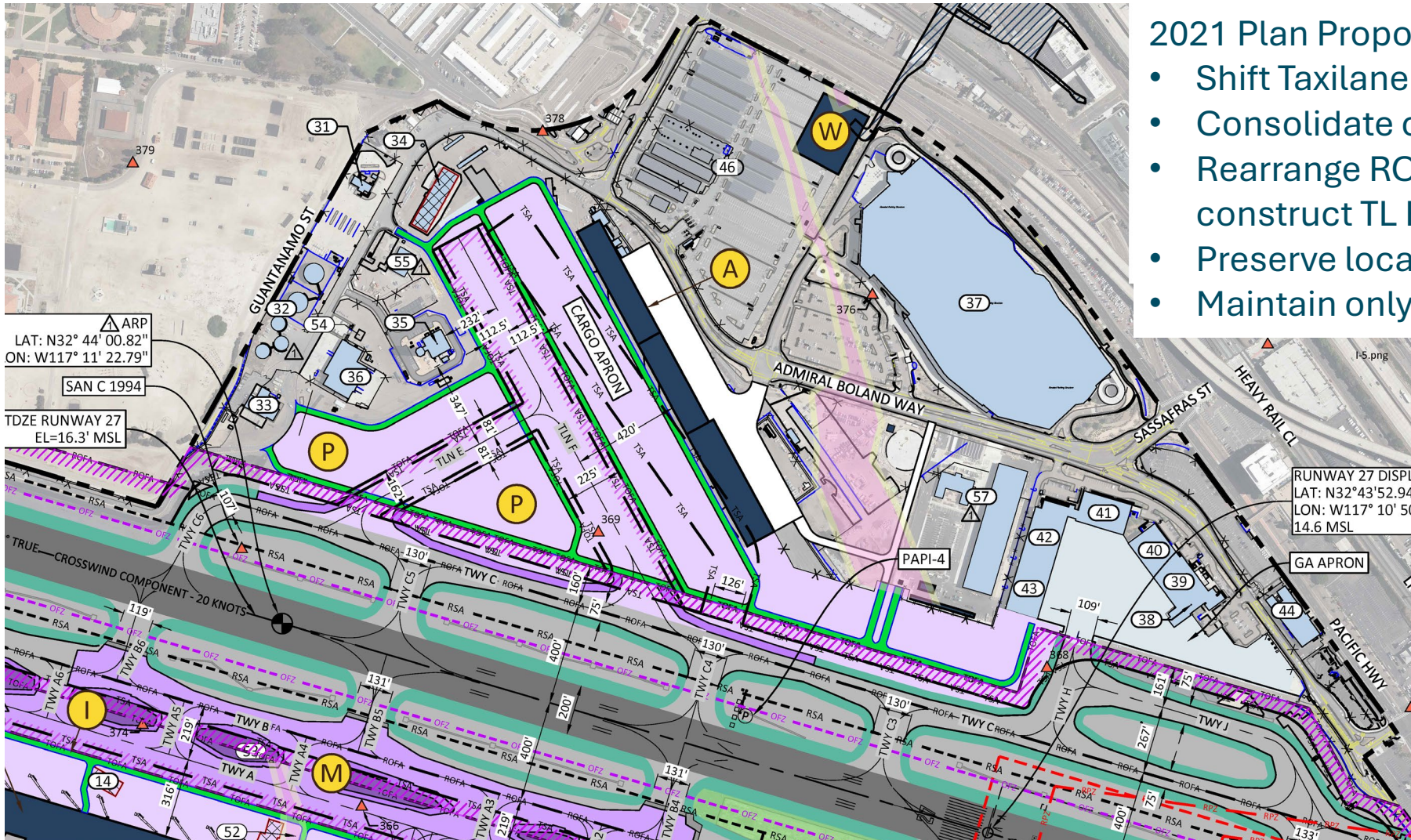
- Landside

- Rental Car Storage, Maintenance, and De-fleeting
- Employee Parking

Airside



FAA Approved ALP (2021)



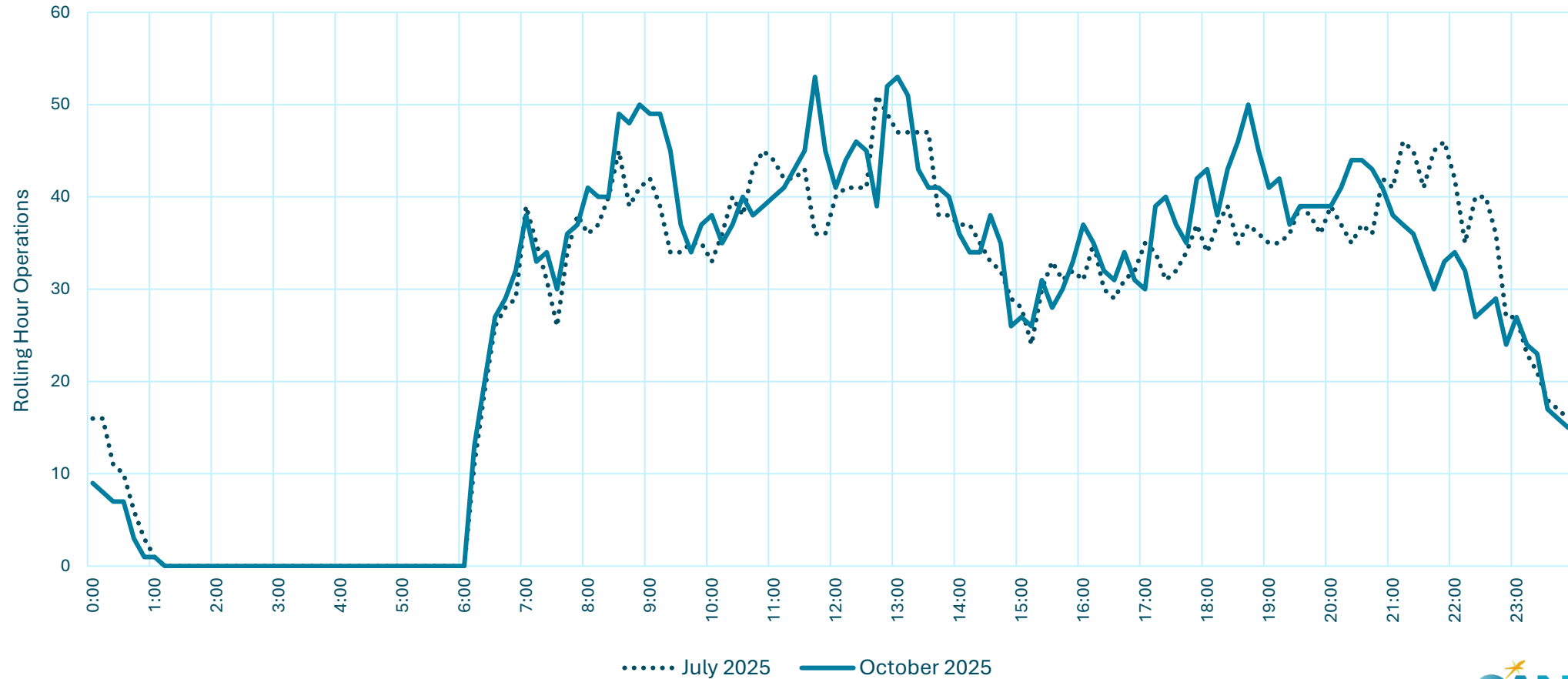
2021 Plan Proposed:

- Shift Taxiway F (TL F) westward
- Consolidate cargo east of TL F
- Rearrange RON parking and construct TL E
- Preserve location of ATCT
- Maintain only Group IV capabilities

Northside Taxiway System/RON Parking



SAN Aircraft Operations



Taxiway System/RON Parking



- Goals
 - Provide Air Traffic Control (ATC) additional space for aircraft movements
 - Accommodate Group V aircraft
 - Provide equivalent or additional RON Parking
 - Correct taxiway design



Air Cargo Operations



Sort Facility - FedEx New Facility at Ontario International Airport



Through-the-Fence - UPS New Facility at Boeing Field



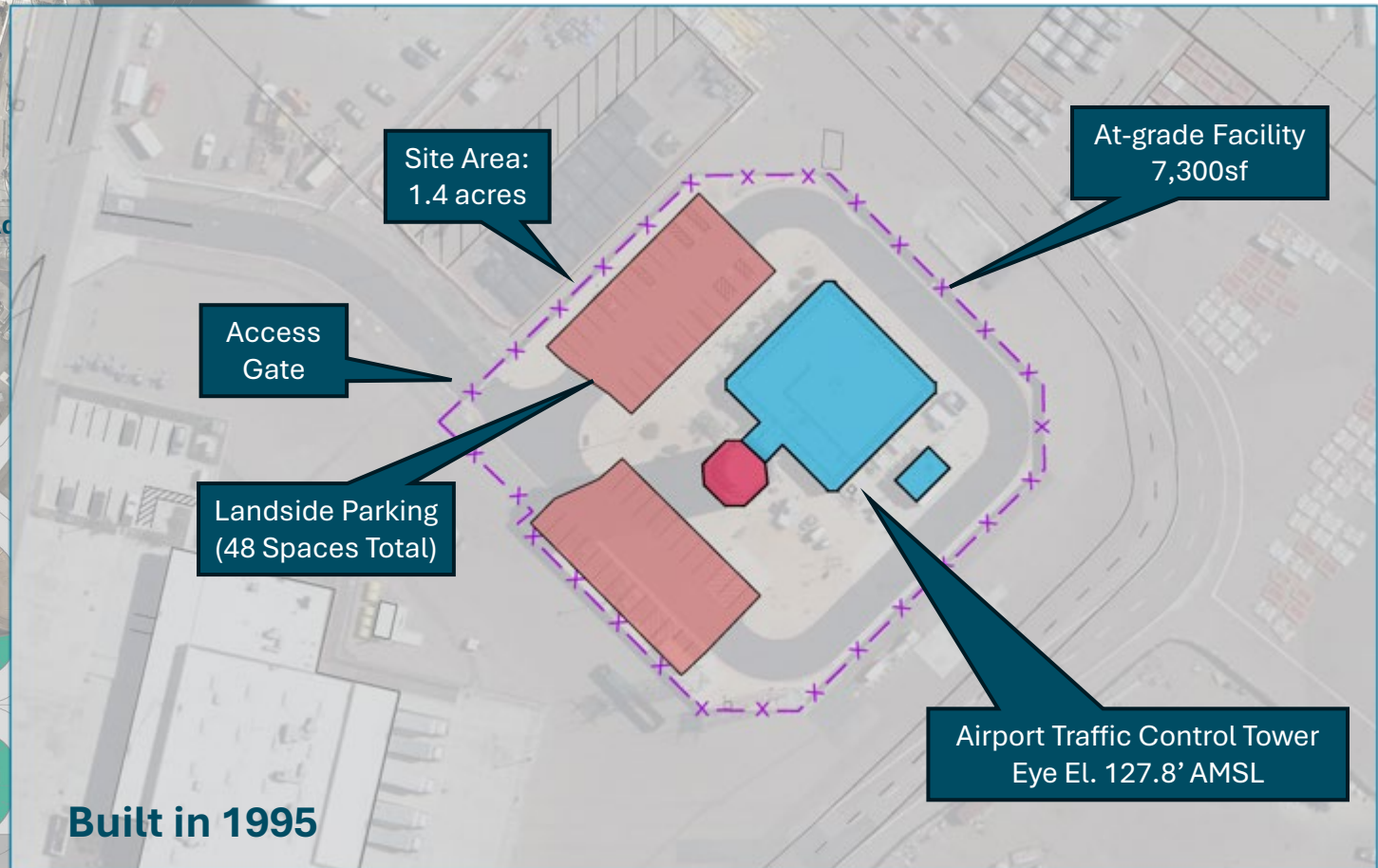
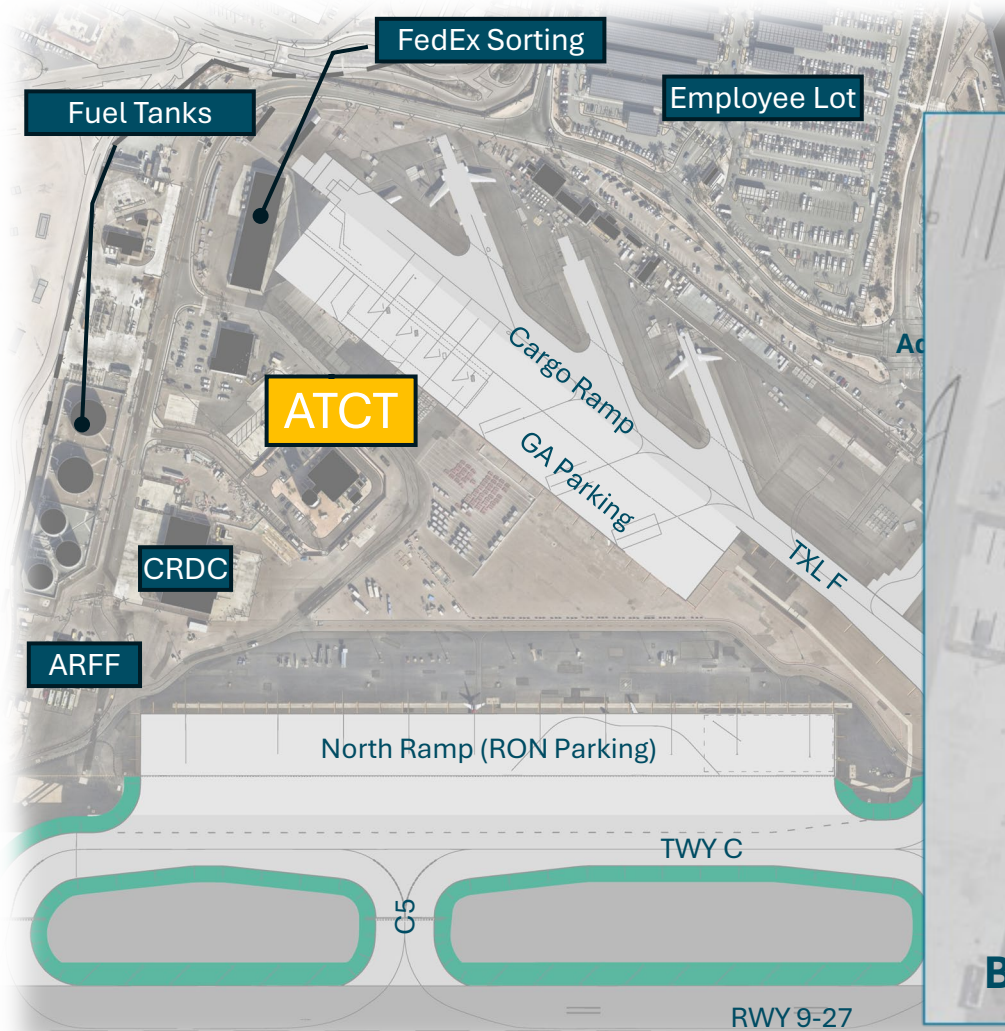
Cargo Facilities/Operations



- Goals
 - Consolidate parking positions
 - Adapt facilities to cargo operator
 - Accommodate Group V aircraft
 - Provide operational flexibility



Existing ATCT Facilities



Air Traffic Control Tower (ATCT)



- Goals
 - Construct new tower with increased height to address existing challenges
 - Relocate to more optimal location and provide more aircraft movement space



Ancillary Facilities



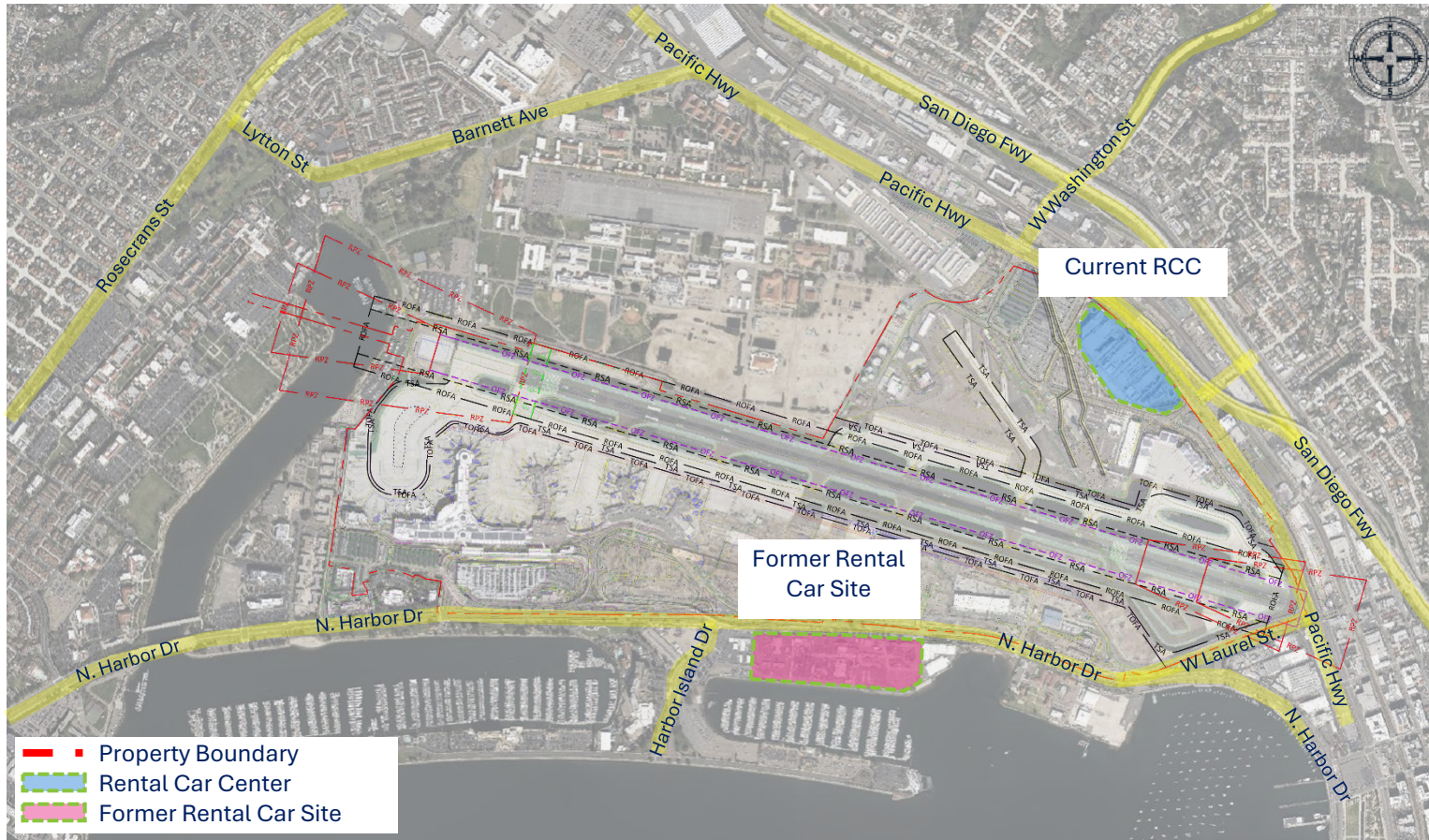
ROOM AREA SQ FT	
AREAS ARE NET SF EXCEPT WHERE NOTED OTHERWISE	
ENTRY	70 SQ FT
CONTROL ROOM	246
CAPTAIN'S DORM	109
CAPTAIN'S RESTROOM	49
TRAINING ROOM	558
SERVER CLOSET	29
STORAGE	29
DINING	391
KITCHEN	240
RESTROOM / SHOWERS	232
MECHANICAL ROOM	89
UTILITY ROOM	56
APPARATUS BAYS	3,929
FITNESS ROOM	834
MAIN CORRIDOR	625
DORMITORY	1,472
	8,958 NET SQ FT
	9,768 GROSS SQ FT

Program Definition Document preparation began in January 2026

Landside



Rental Car Facilities



- Existing Harbor Island facilities to be displaced by future commercial development
- Existing Rental Car Center (RCC) not expandable

Employee Parking Facilities



	Existing Capacity	2050 Demand (w/NT1 & T2)	Surplus / (Deficit)
Existing Employee Lot	1,741	2,522*	(781)
Existing Employee Lot + Shuttle Area Expansion	1,918		(604)

- Existing Employee Lot with Shuttle Area Expansion (reuse) fails to meet NT1 forecast demand.
- Estimate includes additional growth that will occur as enplanements (# of operations) increase.
- ConRAC Employee Lot included in rental car requirements



Employee Parking/Rental Car Facilities



- Goals
 - Accommodate full requirement on northside
 - Limit need for rental cars to look for property offsite
 - Consolidate employee parking to limit costs
 - Limit impacts to existing roadway system



Thank you



SAN DIEGO
INTERNATIONAL AIRPORT