



**HIGH DESERT
CORRIDOR**
JOINT POWERS AGENCY

Construction Network

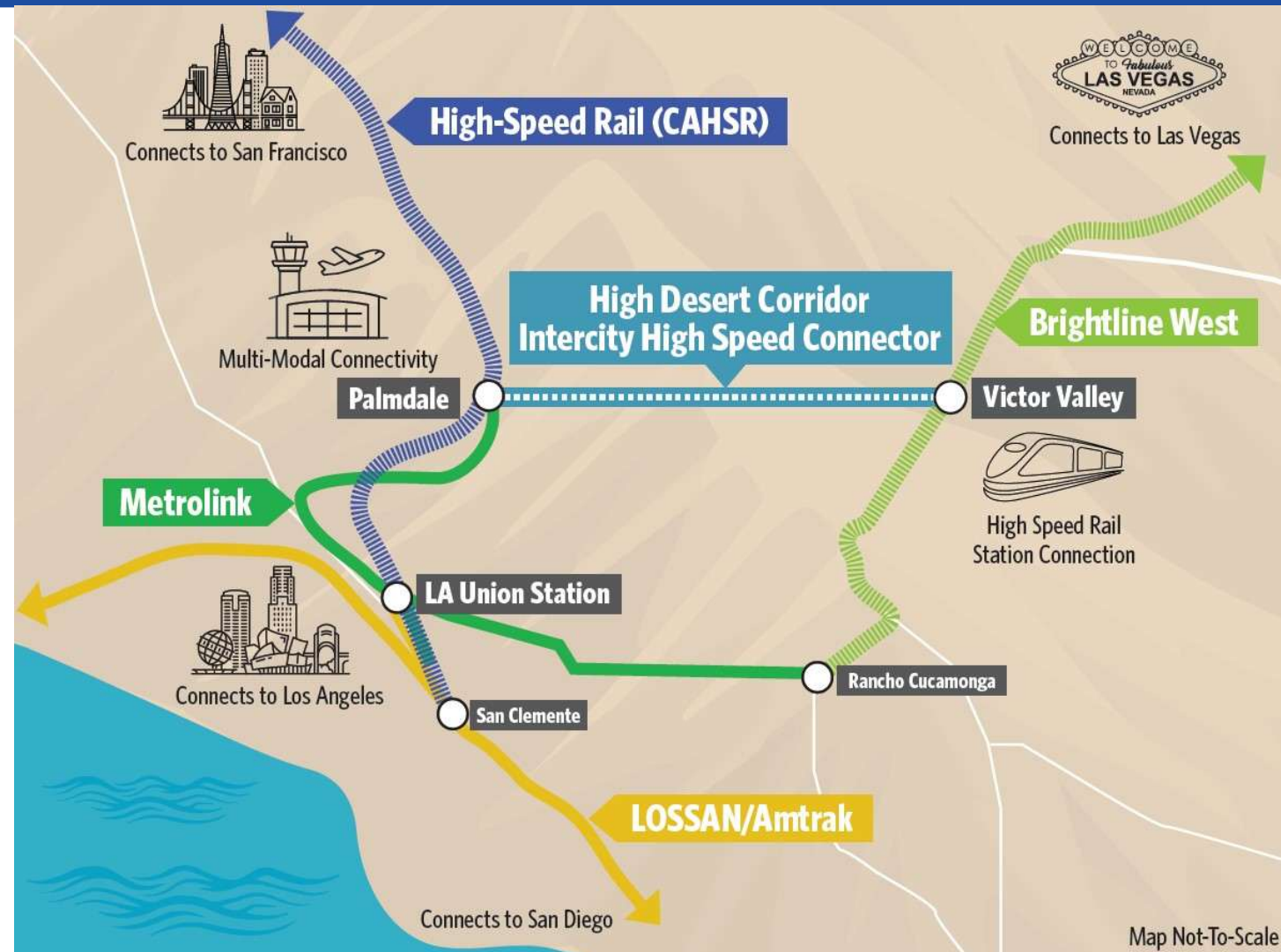
High Desert Corridor Project Update

Presentation by:
Elizabeth Lun, Director of Engineering, High Desert Corridor JPA

February 17, 2026



HDC High Speed Rail Connects CA High Speed Rail & Brightline West



- 54-mile High Speed Intercity Rail Connector Project
- EIR/EIS Completed in 2016
- Two Environmentally Cleared Stations by:
 - CAHSR, Palmdale, LA County, 2021
 - Brightline West, Victor Valley, San Bernardino County, 2023
- HDC Seeking NEPA/Record of Decision approvals

HDC High Speed Rail Benefits



- ✓ **Safety** – Improves travel safety and reliability
- ✓ **Economic** – Generates more than \$12B in economic activity
- ✓ **Jobs-Housing** – Creates jobs closer to growing communities
- ✓ **Leveraging Investments** – Expands market from San Francisco to Las Vegas
- ✓ **Environmental** – Improves air quality and reduce emissions
- ✓ **Connectivity and Mobility** – Invests in historically underserved and underinvested communities

High Desert Corridor Funding



Local – Metro LA County Measure M:

- \$170M in early funds available for predevelopment & ROW activities
- \$1.86B in funding for capital construction (available in future years)

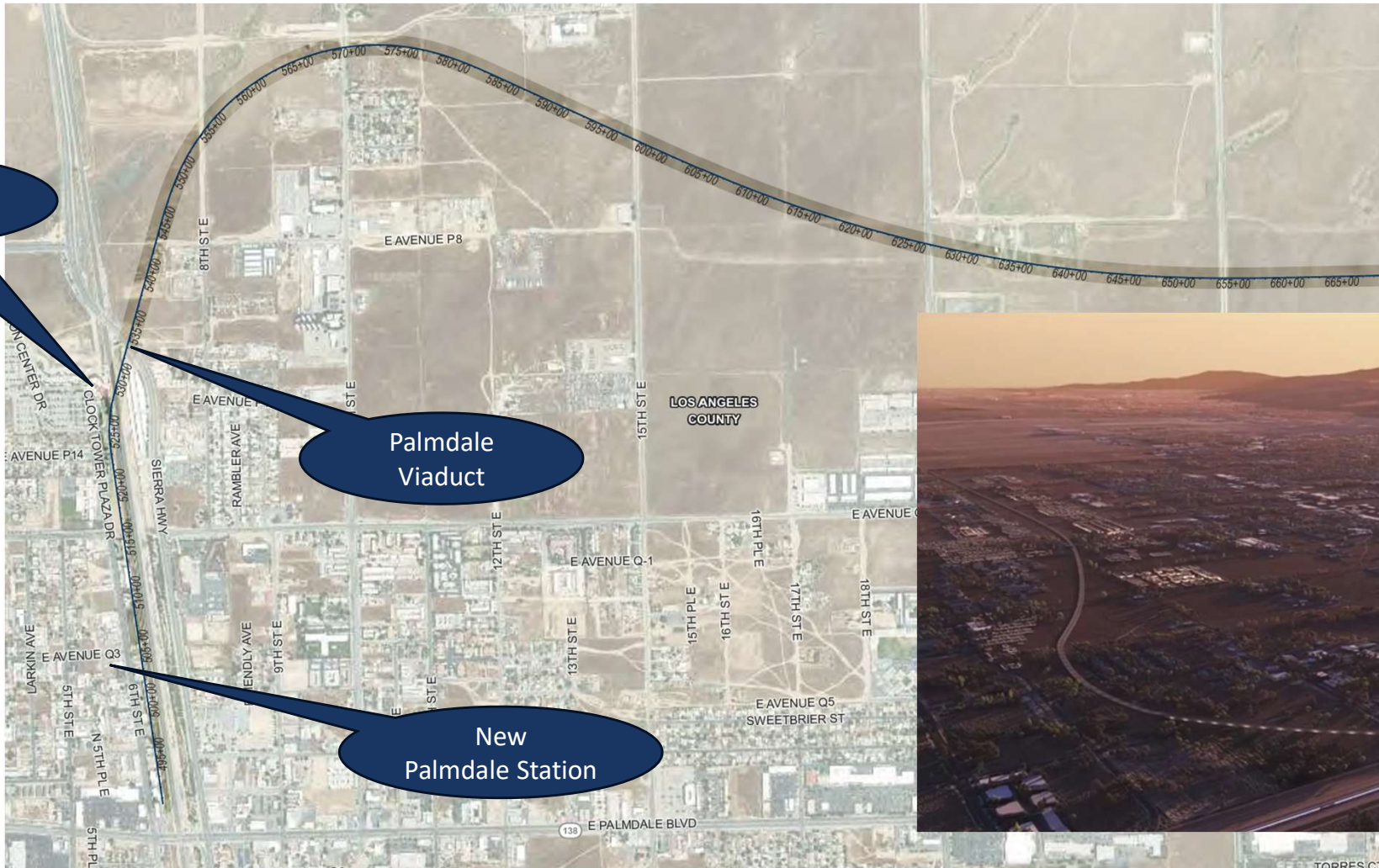
State – \$8M TIRCP (CalSTA) for predevelopment-related design engineering expenditures

Federal – Corridor ID Program (FRA) for expenditures related to the Service Development Plan (SDP):

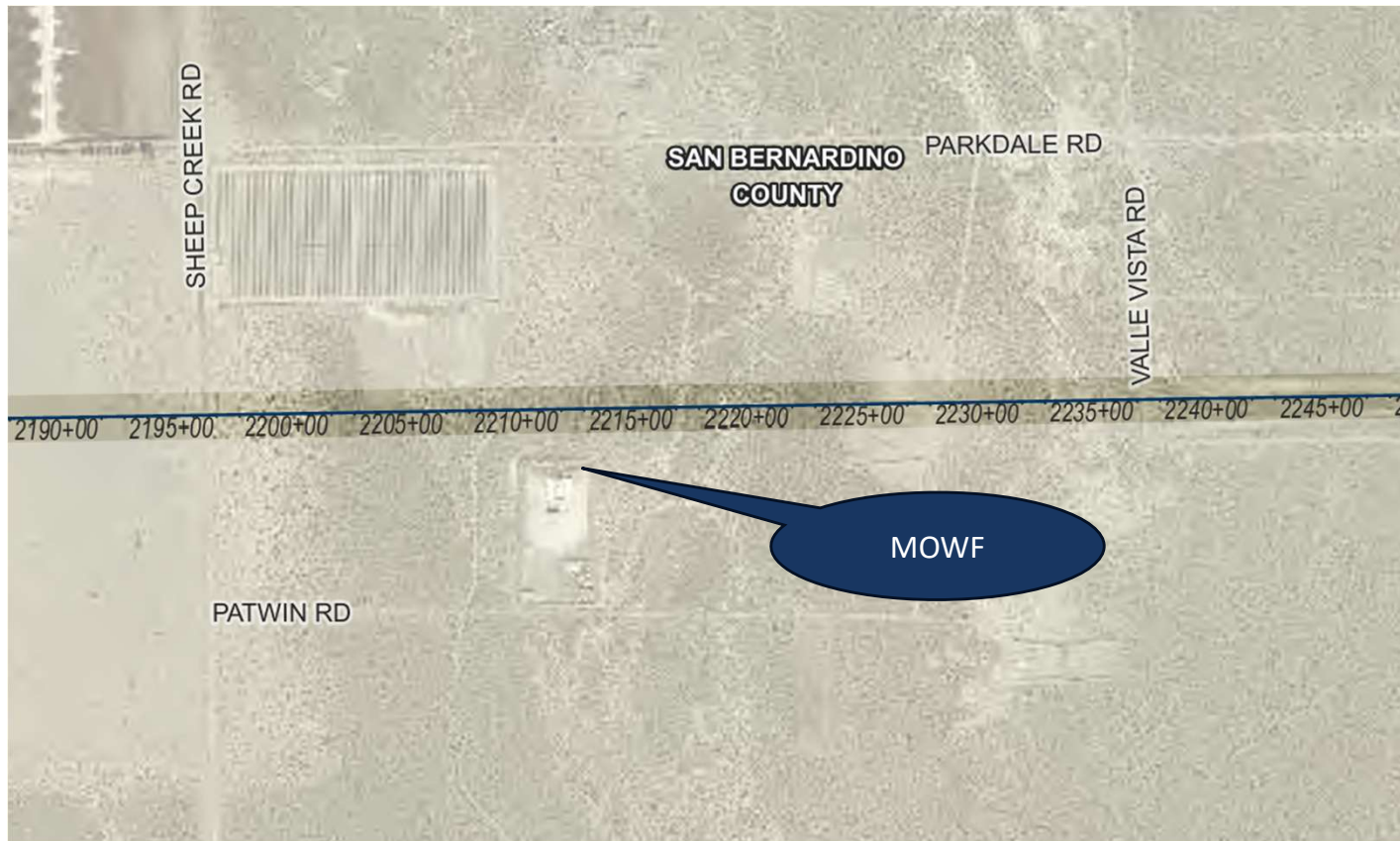
- \$500K for Step 1 (Obligated)
- \$2.3M for Step 2 (Pending FRA final approval)

HDC JPA seeks to leverage existing funds to advance the project to construction

Palmdale Station



Maintenance of Way Facility



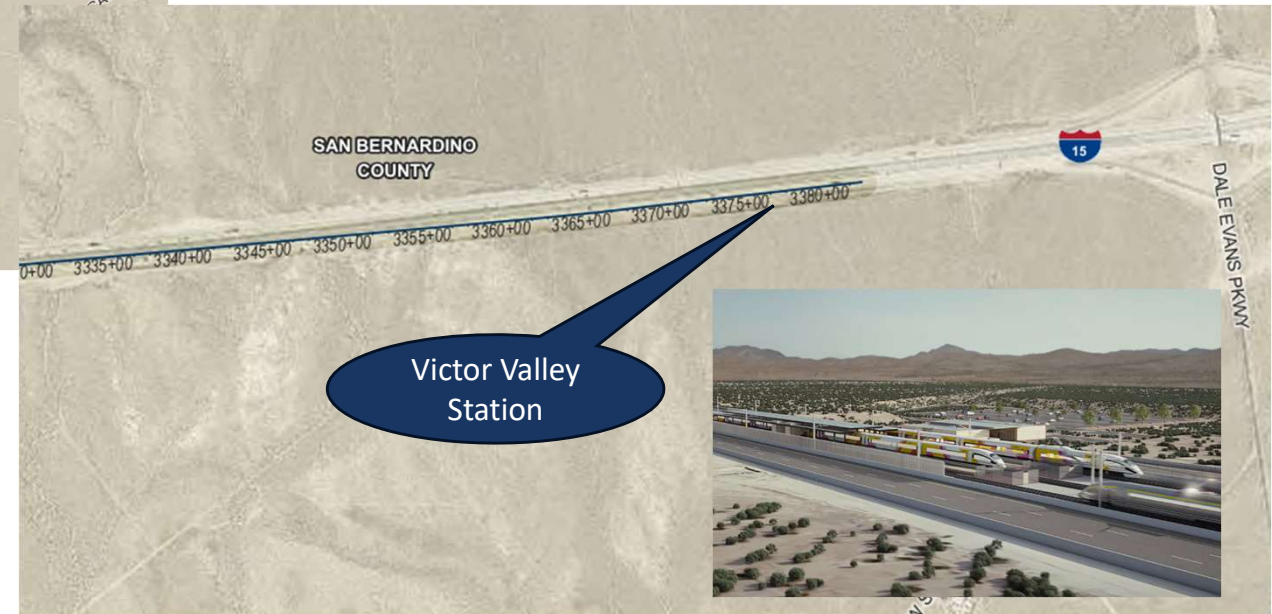
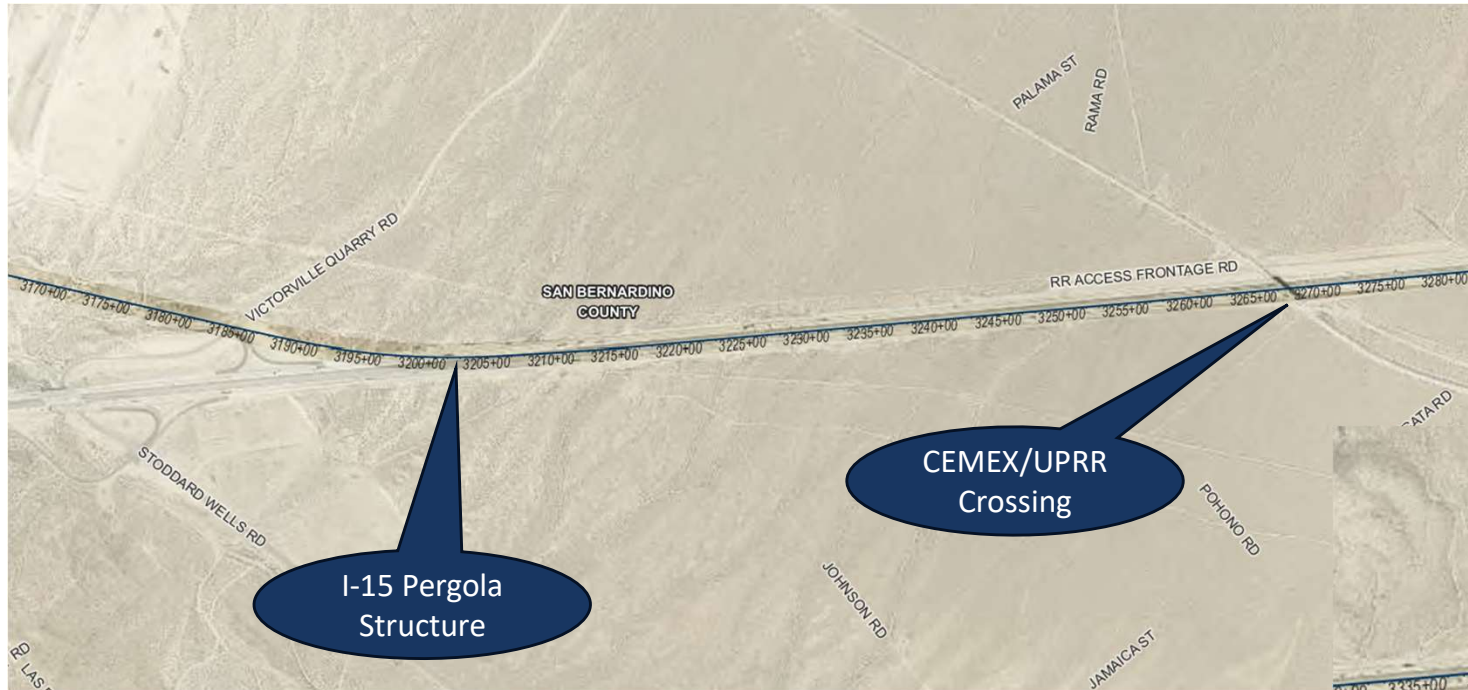
MOWF Functions

- Stockpile areas for ballast and other bulk materials
- Secured stockpile areas for non-bulk materials (i.e. ties, fixations, OCS poles, cable troughs, etc.)
- Railside unloading dock and continuously welded rail (CWR) train storage
- Rail-borne equipment and locomotive storage tracks
- Road-rail vehicle access locations
- Initially used for track and systems construction
- Office building
- 24 hours / 7 days a week operation

Mojave River Crossing



I-15 / Victor Valley Station



High Desert Corridor Key Milestones

- Obtain NEPA Record of Decision in 12-18 months
- Advance Preliminary Engineering and ROW Efforts in 12-18 months
- Begin Construction in 3-5 years
- Target Completion in 2033-2035