

City of Los Angeles Public Works

Contracting Opportunities



Sidewalk Compliance Division

2



Lafayette Multipurpose Center – CD 10

Omar Braish
Senior Civil Engineer
Department of Public Works,
Bureau of Engineering

Topics

3

- **Sidewalk Repair Program (SRP) Overview**
 - Mission
 - Willits Settlement Terms
- **Construction Photos**
- **Delivery Vehicles for SRP**
 - Category-1
 - Category-2
 - Category-3
- **Forthcoming SRP Projects**
 - Schedule / Scope

Overview: Mission

4



Improve Mobility in
Los Angeles by making
Sidewalks and Ramps

Accessible
for all

Spend \$1.37 Billion on Repairs
over 30 Years

Overview: Settlement Terms

5

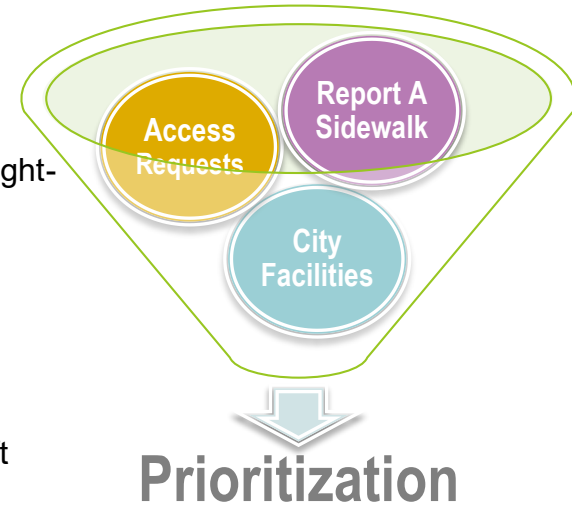
Willits Settlement Agreement implements a portion of the City's obligations set forth by the Rehabilitation Act (1973) and Americans with Disabilities Act (1990).

1. Remediate existing barriers
2. Prevent new barriers/Ensure new construction and alterations are accessible

Scope of Work: Remove barriers to access for people with disabilities in the public right-of-way, which include broken sidewalk, inaccessible curb ramps, and other barriers.

SRP Sub-Programs and Prioritization: ([Council File No4-0163-S3](#))

1. **Access Request** - Residential, within 500 ft of Transit Stop and 120 days old
2. **City Facility** - Transportation Corridors, Hospitals/Assisted Living, Severity
3. **General Program Access Improvements** - Missing curb ramps, sidewalk uplift
4. **Rebate Program** - Partial reimbursement for applicants repairing their own Sidewalks



Construction – Photos

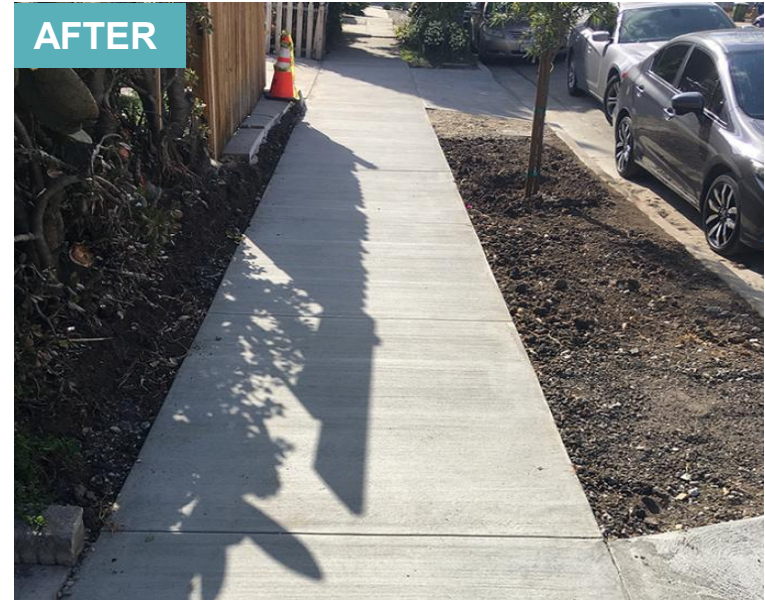
6



Site 4605 – 1545 E 41ST PL – CD 9

Construction – Photos

7



Site 5895 – 3411 W LONDON ST – CD 13

Construction – Photos

8



Site 3282 – JOHN MUIR BRANCH LIBRARY – CD 8

Delivery Vehicles for SRP

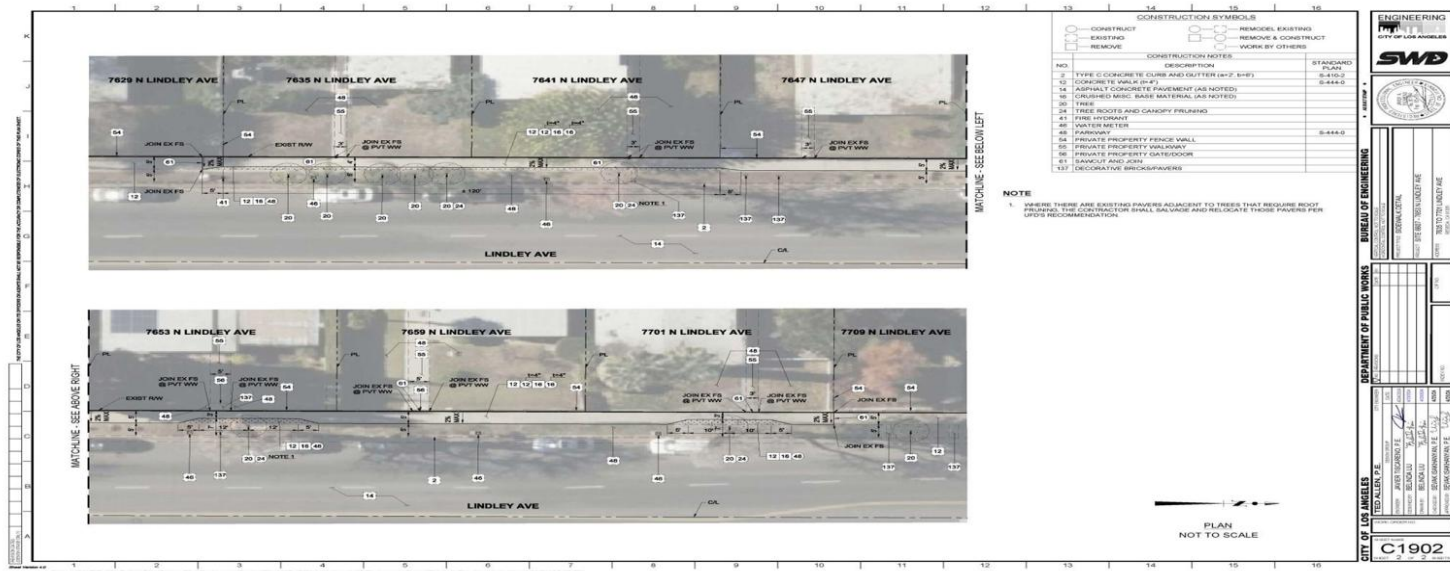
9

- **Category 1 (simple - exhibits and standards plans)**
 - “Exhibit Construction” for City Forces



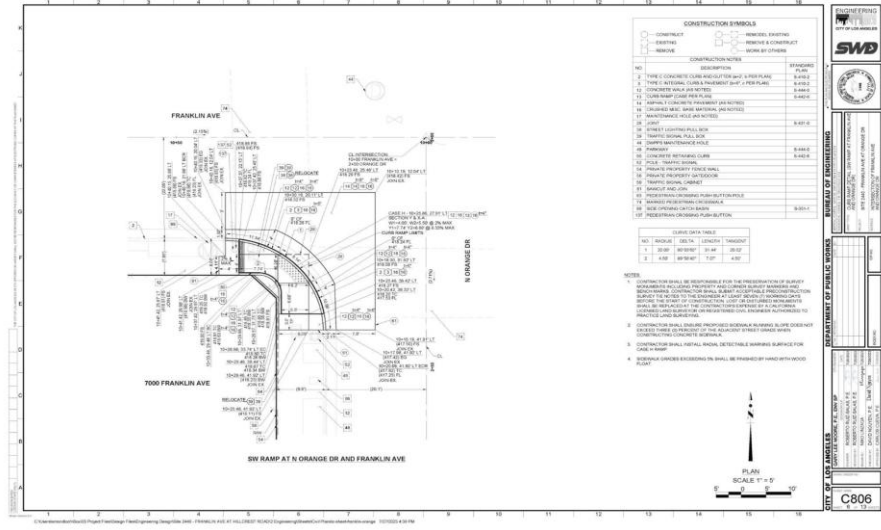
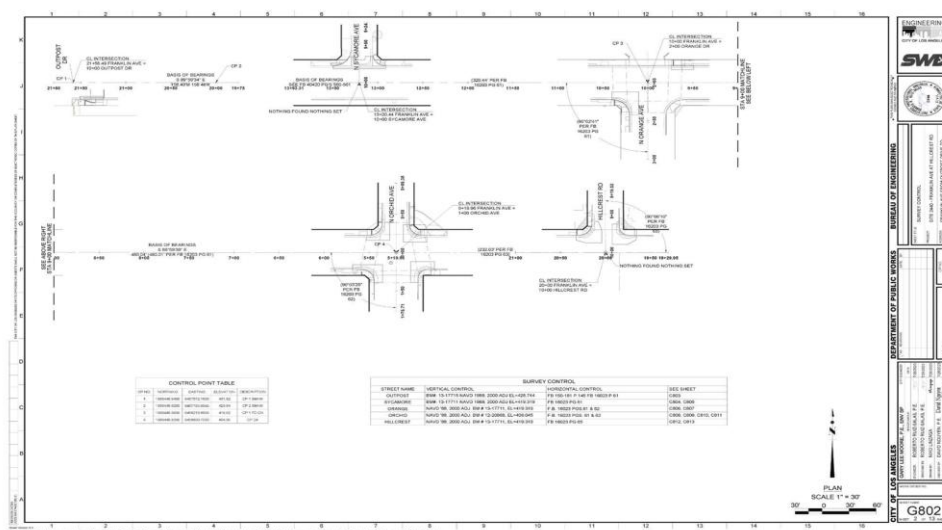
Delivery Vehicles for SRP

- **Category 2 (medium complexity - 2D design)**
 - Community Level Contracting (Small Contractor List)
 - Design/Build Contract
 - Traditional Competitive Bidding



Delivery Vehicles for SRP

- **Category-3 (complex - 3D design)**
 - Traditional Competitive Bidding



Forthcoming SRP Projects

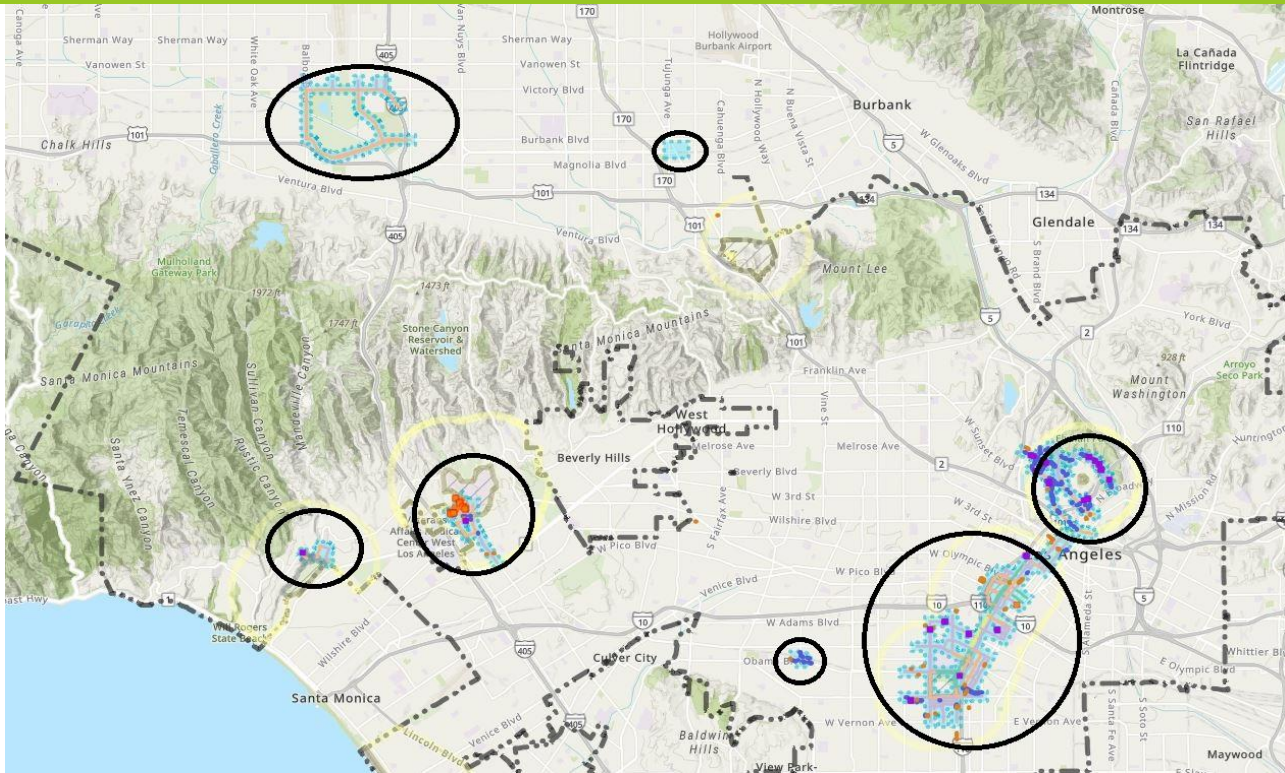
Anticipated Schedule

Package No.	Advertise	Bids Due	Award date
85	05/20/26	06/20/26	11/10/26
86	05/20/26	06/20/26	11/10/26
87	06/20/26	07/20/26	12/10/26
88	06/20/26	07/20/26	12/10/26

Anticipated Scope

	Access Request	Package	Project Cost Estimate	Status
2	Open Bid - Design/Bid/ Build (LA28)	85	\$3,000,000	Design
3	Open Bid - Design/Bid/ Build (LA28)	86	\$2,500,000	Design
4	Open Bid - Design/Bid/ Build	87	\$3,000,000	Design
5	Open Bid - Design/Bid/ Build (LA28)	88	\$3,000,000	Design
6	Small Packages (LA28)	SC-AR 53 to 55, and 57 to 59	900,000	Design
7	Small Package	SC-AR 56	150,000	Design

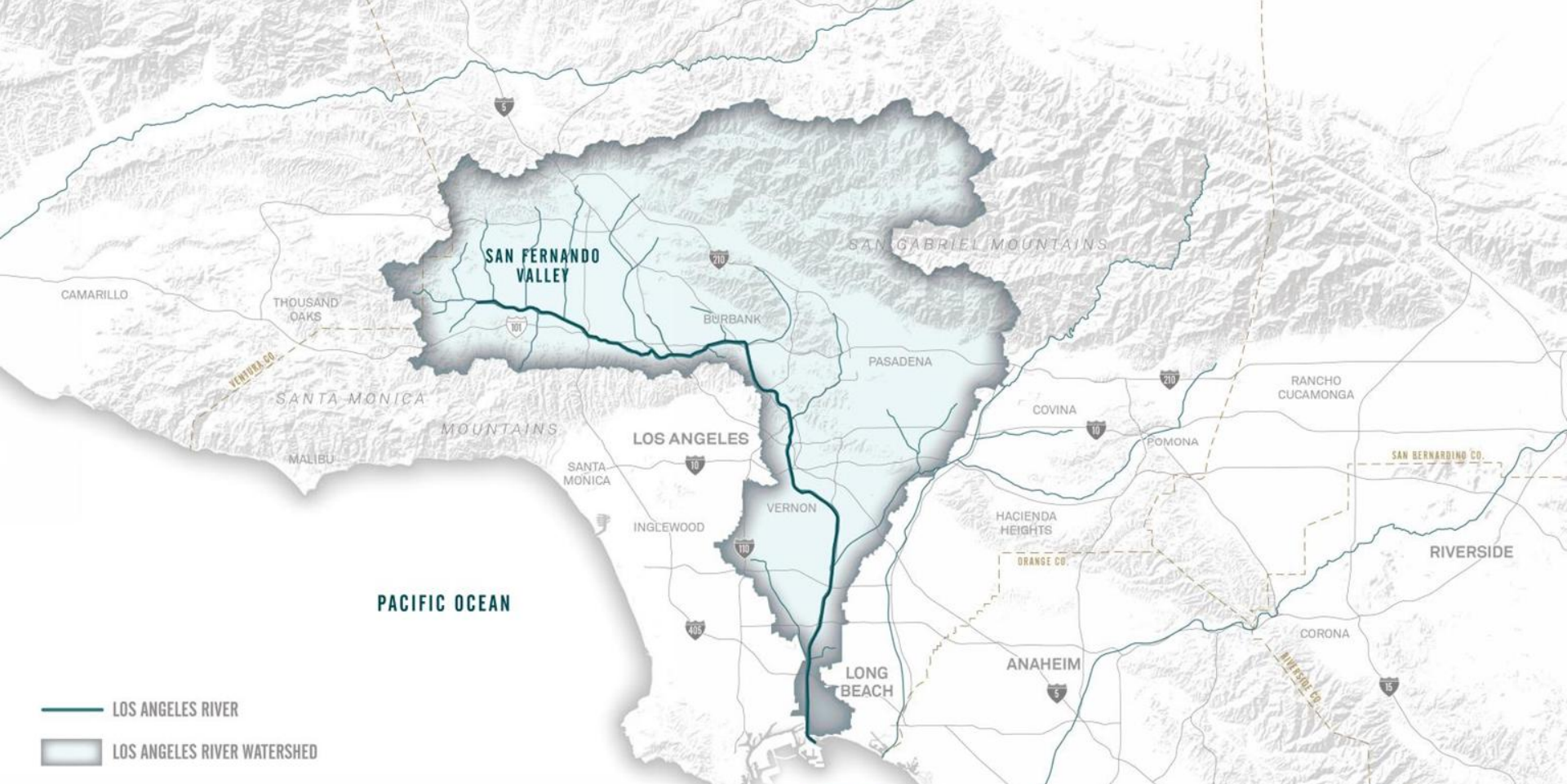
Forthcoming SRP Projects



LA River Revitalization

Michael Affeldt

LA River Revitalization Coordinator
Department of Public Works,
Bureau of Engineering



-  LOS ANGELES RIVER
-  LOS ANGELES RIVER WATERSHED



PORT OF
LONG BEACH

LA RIVER REVITALIZATION

San Fernando Valley LARiverWay Paths





ATP Cycle 4
Partially-Funded
\$18M ATP
\$15M local
Shortfall: \$28M



Completion Need:
\$150-200M for
essential
connectivity
~9 miles



ATP Cycle 6
Funded
\$34M ATP
\$15M Local



- Vanalden Ave
- White Oak Ave
- Balboa Blvd
- Burbank Blvd
- Sepulveda Blvd
- Kester Ave
- Hazeltine Ave
- Woodman Ave
- Coldwater Canyon
- Whisett Ave
- Lankershim Blvd
- Barham Dr
- Zoo Dr

- 1
- 2
- 3
- 4
- 5
- 6
- 7
- 8
- 9

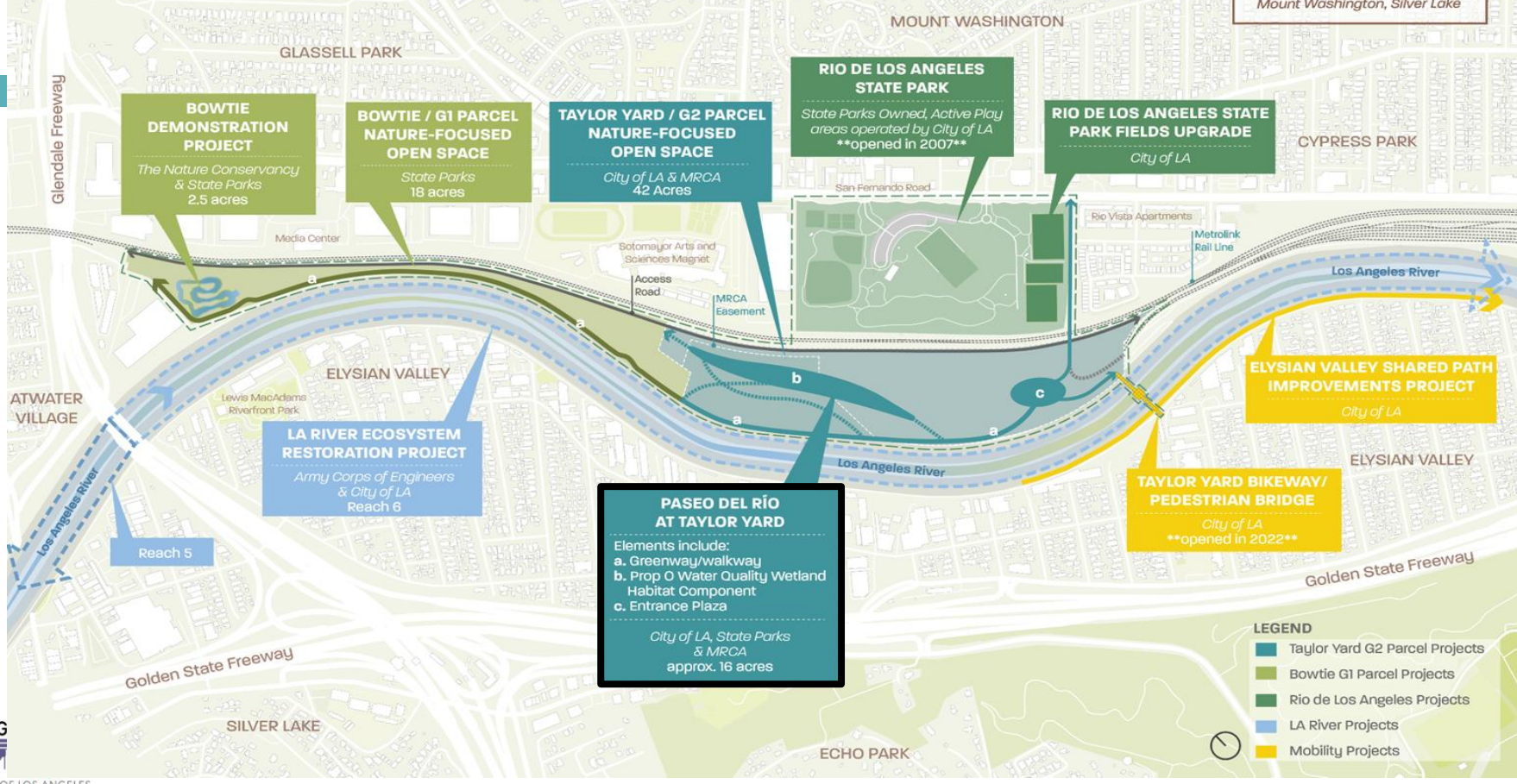
Taylor Yard G2



100 ACRE PARTNERSHIP
At Taylor Yard

100-ACRE PARTNERSHIP PROJECTS

TAYLOR YARD EQUITY STRATEGY (TYES)
Includes nearby portions of these neighborhoods:
Atwater Village, Cypress Park, Echo Park, Elysian Valley, Glassell Park, Mount Washington, Silver Lake



BOWTIE DEMONSTRATION PROJECT
The Nature Conservancy & State Parks
2.5 acres

BOWTIE / G1 PARCEL NATURE-FOCUSED OPEN SPACE
State Parks
18 acres

TAYLOR YARD / G2 PARCEL NATURE-FOCUSED OPEN SPACE
City of LA & MRCA
42 Acres

RIO DE LOS ANGELES STATE PARK
State Parks Owned, Active Play areas operated by City of LA
opened in 2007

RIO DE LOS ANGELES STATE PARK FIELDS UPGRADE
City of LA

LA RIVER ECOSYSTEM RESTORATION PROJECT
Army Corps of Engineers & City of LA
Reach 6

PASEO DEL RÍO AT TAYLOR YARD
Elements include:
a. Greenway/walkway
b. Prop O Water Quality Wetland Habitat Component
c. Entrance Plaza
City of LA, State Parks & MRCA
approx. 16 acres

TAYLOR YARD BIKEWAY/ PEDESTRIAN BRIDGE
City of LA
opened in 2022

ELYSIAN VALLEY SHARED PATH IMPROVEMENTS PROJECT
City of LA

- LEGEND**
- Taylor Yard G2 Parcel Projects
 - Bowtie G1 Parcel Projects
 - Rio de Los Angeles Projects
 - LA River Projects
 - Mobility Projects

ALTERNATIVE 1: Mounds & Valleys / ALTERNATIVA 1: Montículos y Valles



intermittent wet valley /
valle húmedo
intermitente

biodiversity buffer (scrub + trees) /
amortiguador de la biodiversidad
(matorrales y árboles)

biodiversity buffer
(transition) /
amortiguador de la
biodiversidad (transición)

pollinator hills /
colinas
polinizadoras

shade pavilion
& restrooms
/ pabellón de
sombra y baños

sloped lawn (sunset viewing) / césped
inclinado (observación del atardecer)

nature walk /
paseo por la
naturaleza

paseo walkway /
pasarela de paseo

LOS ANGELES RIVER /
RÍO LOS ANGELES

TAYLOR YARD EQUITY STRATEGY



**HOUSING +
CULTURAL EQUITY,
ARTS + CULTURE
SMALL BUSINESS +
WORKFORCE
DEVELOPMENT**

Launching 2023 | \$450K Raised to date

TYES project partners will undertake a grassroots community organizing and planning effort to develop a community-driven proposal for equitable community development initiatives in the Northeast Los Angeles neighborhoods around Taylor Yard to uplift the priorities and sustainability of local residents and small businesses.



Wastewater Conveyance Engineering Division



Matias Farfan
Environmental Engineer
Department of Public Works,
Bureau of Engineering

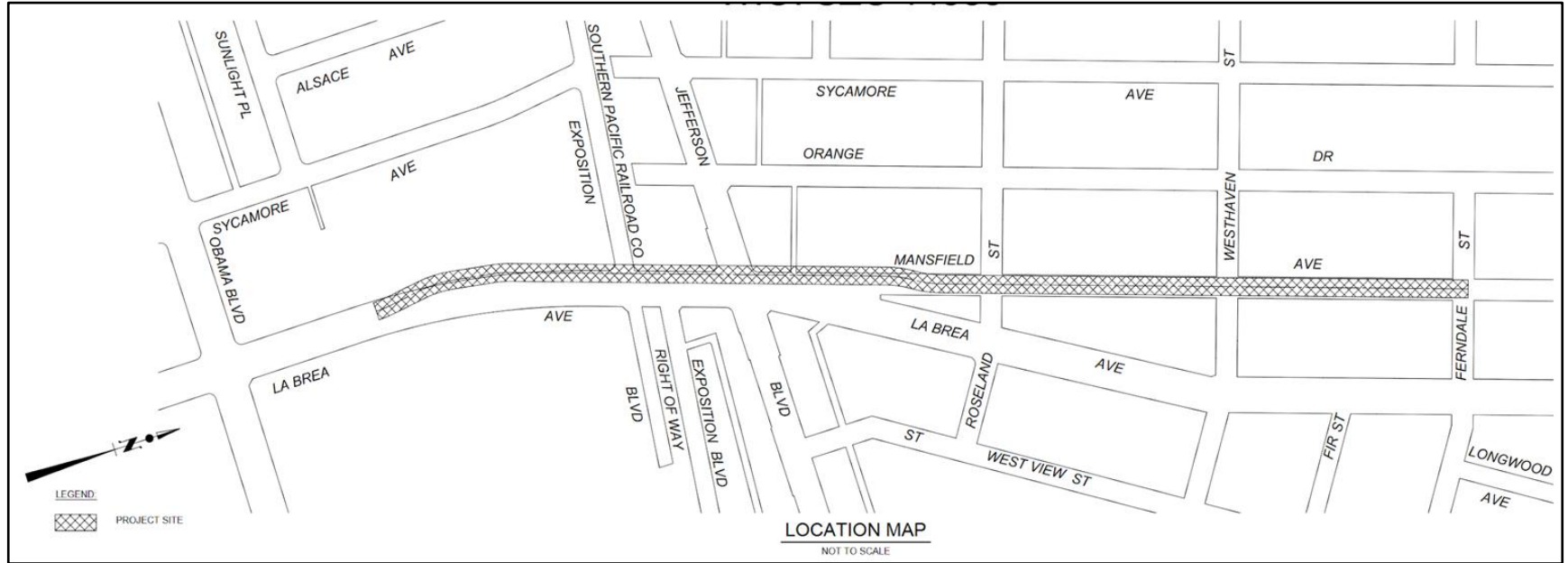
Wastewater Conveyance Engineering Division (WCED)

- **Primarily responsible for the design of the Wastewater Collection System- Rehabilitation of Primary and Secondary Sewer projects**
- **WCED is also responsible for:**
 - Pumping Plant Rehabilitation projects
 - Assessment projects
 - Review and approval of products in the public R/W
 - Third party coordination to ensure City's Sewer infrastructure is protected
- **Currently have a total of 28 projects in the Pre-Design and Design phases. Typical duration for the Pre-Design phase is 12 to 18 months and for the Design phase is 30 to 36 months depending on the complexity of the project.**
- **The upcoming projects for the Bid and Award within the next 3 months are:**

Upcoming Bid Opportunities

#	Project Title	Estimated Award Date	Construction Cost
1	Westlake Relief Drain Rehab Unit 5	08/31/2026	\$14,181,000
2	Central Business District Sewer Rehab Unit 2	06/30/2026	\$13,828,282
3	Central Business District Sewer Rehab Unit 12	09/30/2026	\$22,007,000
4	Central Business District Sewer Rehab Unit 15	07/31/2026	\$5,204,700
5	PP 616 Cahuenga Pumping Plant Rehab	01/29/2027	\$9,233,714

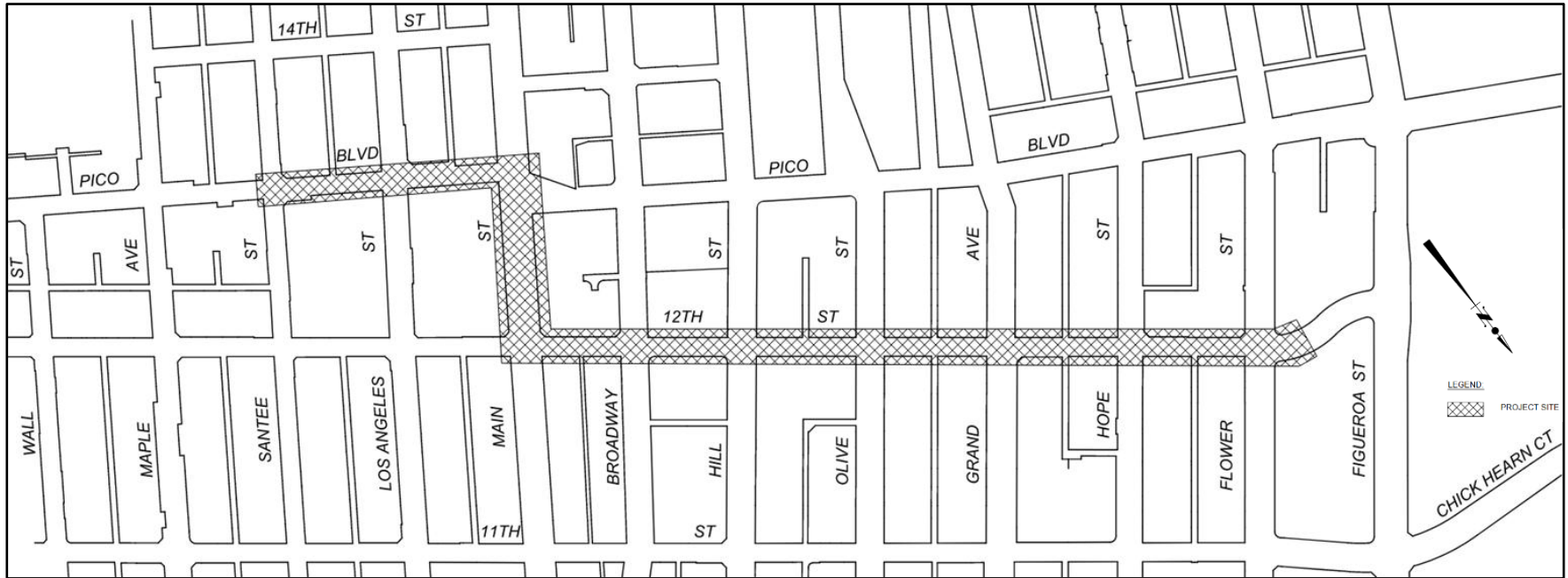
Westlake Relief Drain (WRD) Rehab Unit 5 – Ferndale to Obama



WRD Unit 5: Scope of Work

- Rehabilitation of approximately 3,317 feet of circular sewer comprised of various pipe sizes (30-in, 36-in, and 54-in) composed of various materials (concrete pipe, reinforced concrete pipe, cast iron pipe, and vitrified clay pipe).
- Scope of work also includes cleaning, removal and disposal of sewer debris, re-establishing any main line sewers and house connections, replacing maintenance hole covers, temporary odor control, sewer bypass and traffic control
- The construction cost estimate is approximately \$14 million

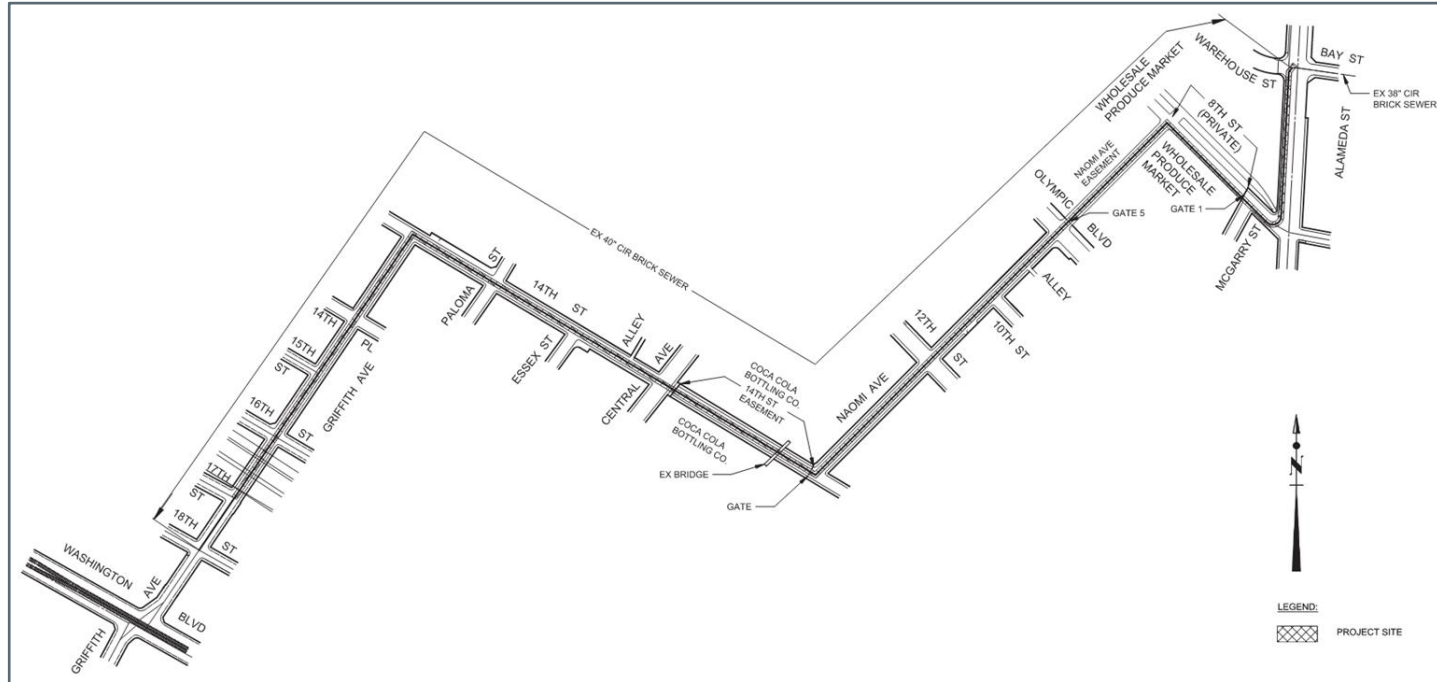
Central Business District (CBD) Sewer Rehab Unit 2 – 12th & Flower to Pico & Santee



CBD Sewer Rehab Unit 2: Scope of Work

- Rehabilitation of approximately 3,679 feet of existing 39-inch semi-elliptical brick and concrete sewer using CIPP lining
- Rehabilitate existing sewer maintenance holes
- Partially remove & reconstruct maintenance holes for bypass sewer
- Constructing new 48-inch maintenance holes
- Reconnecting existing laterals and house connections
- Scope of work also includes cleaning, removal and disposal of sewer debris, temporary odor control, sewer bypass and traffic control
- The construction cost estimate is approximately \$14 million

CBD Sewer Rehab Unit 12 – Alameda to 18th St



CBD Sewer Rehab Unit 12: Scope of Work

- Rehabilitation of approximately 6,273 feet of 40-inch, circular brick sewer built in 1890 and 1891 using UV-CIPP lining
- Scope of work also includes cleaning, removal and disposal of sewer debris, re-establishing any main line sewers and house connections, rehabilitation of maintenance holes, temporary odor control, sewer bypass and traffic control
- The construction cost estimate is approximately \$22 million

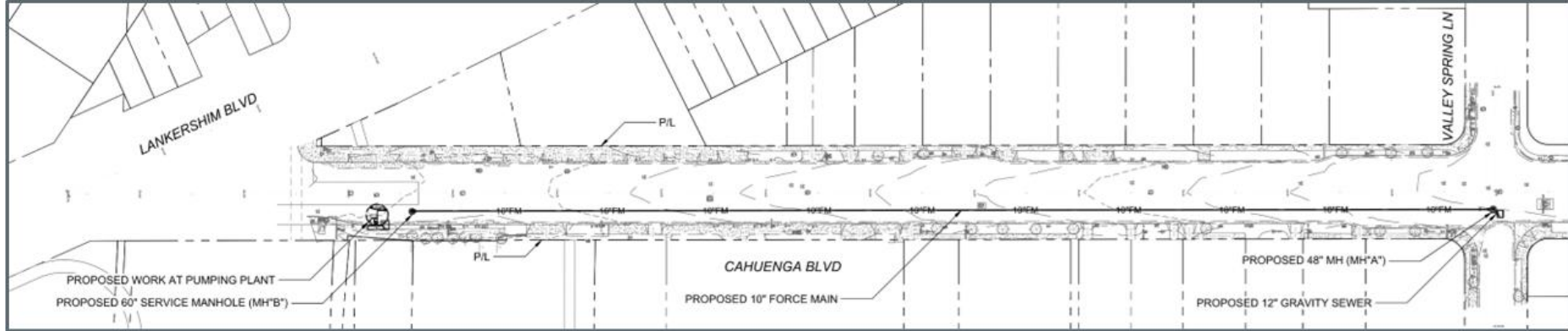
CBD Sewer Rehab Unit 15 – James M. Wood to 11th



CBD Sewer Rehab Unit 15: Scope of Work

- Rehabilitation of approximately 2,724 feet of 24-inch existing circular sewer using UV-CIPP lining
- Rehabilitation of existing maintenance holes and a junction structure
- Scope of work also includes cleaning, removal and disposal of sewer debris, re-establishing any main line sewers and house connections, temporary odor control, sewer bypass and traffic control
- The construction cost estimate is approximately \$5 million

PP 616 Cahuenga Pumping Plant Rehab



PP 616 Cahuenga Pumping Plant Rehab: Scope of Work

- Demolition, procurement, replacement, and installation of pumping plant's mechanical, electrical, communication, instrumentation, and control systems
- Landscaping, architectural, civil, and structural improvements
- Installation of 10-inch force main
- Installation of new maintenance holes
- The construction cost estimate is approximately \$9 million

City of Los Angeles

Public Works, Streets LA

Upcoming Projects & Contracting Opportunities



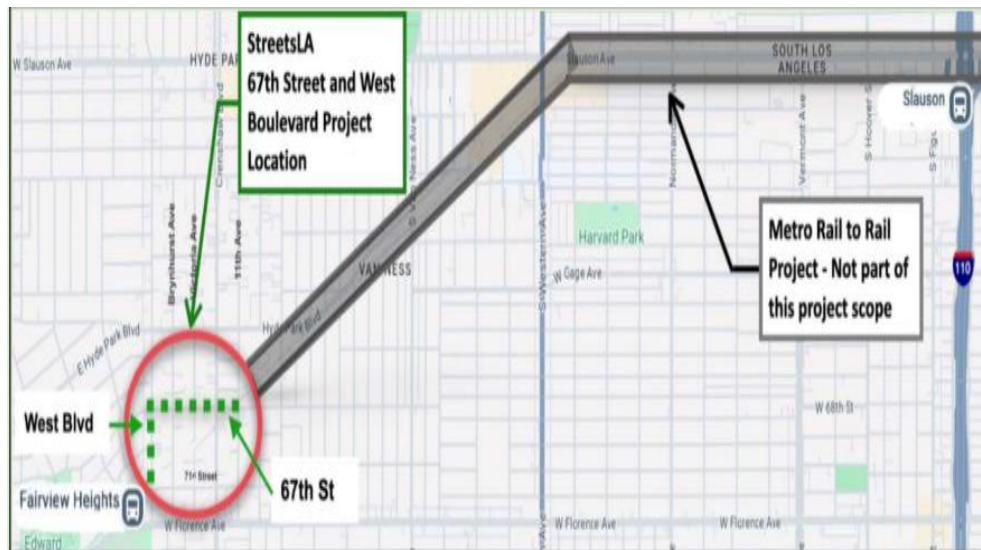
Prashant Konareddy, Senior Civil Engineer



67th Street and West Boulevard Civil

Improvements

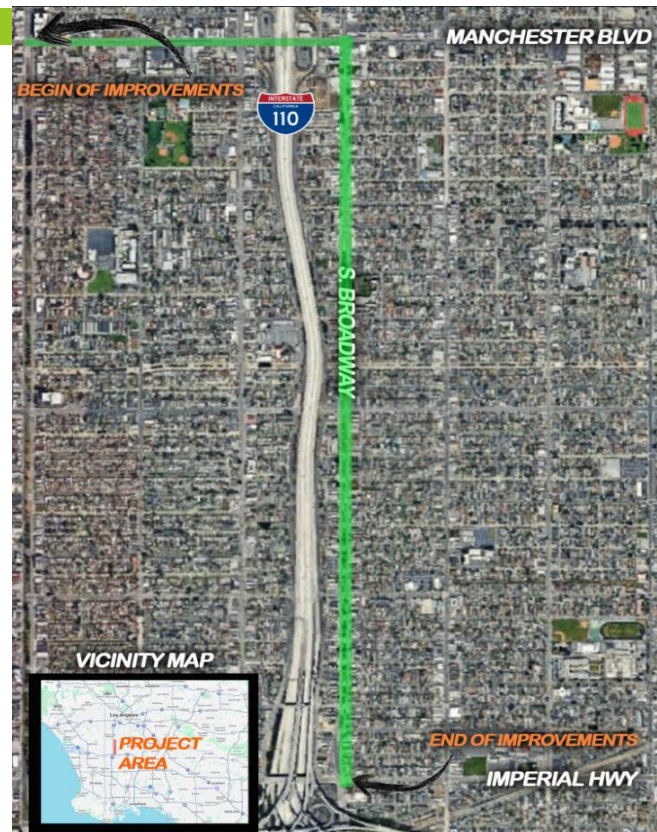
- **Scope:** Street improvements along 67th Street from 11th Avenue to West Boulevard, and along West Boulevard from 67th Street to 71st Street
- **Improvements:** Sidewalk improvements, ADA-compliant curb ramp upgrades, driveway approach reconstructions, roadway resurfacing, tree pruning, and curb and gutter reconstruction
- **Construction Cost:** \$5.6M+
- **Schedule:** Bid & Award: 06/2026
Construction: 01/2027 - 12/2027





Broadway-Manchester ATP Equity Project

- **Scope:** Street improvements along a 2.8-mile corridor on Manchester Ave from Vermont Ave to South Broadway, and along South Broadway from Manchester Ave to Imperial Highway
- **Improvements:** Upgrading Class IV protected bike lanes with concrete barrier, improving pedestrian access paths, installing additional lighting and signals for safety, and planting trees and landscaping for urban heat mitigation
- **Construction Cost:** \$55–60M
- **Schedule:**
 - Bid & Award: Summer 2026
 - Construction: Early 2027 – Late 2028



Mission Mile Sepulveda: Visioning for a Safe and Active Community



- **Scope:** Street improvements along a 3.25-mile corridor on Sepulveda Blvd, featuring green space in a proposed new median, improved transit connectivity, and multi-modal transportation options.
- **Improvements:** Class IV Protected and Class I Shared-Use Bike Lanes, Curb Ramps, Curb Extensions, Street Lighting, and HAWK Pedestrian Signals
- **Construction Cost:** \$60–70M
- **Schedule:**
 - Bid & Award: 03/2027
 - Construction: 09/2027 – 12/2029





Western Our Way Project

- **Scope:** Improve safety and public access for pedestrians and cyclists along Western Ave
- **Improvements:** Curb Extensions, ADA-Compliant Curb Ramps, Pedestrian Beacons, Bus Bulbs, Protected Left-Turn Pockets, Intersection Medians, Street Trees, Pedestrian Lighting, and Crosswalk Enhancements
- **Construction Cost:** \$50–60M
- **Schedule:**
Bid & Award: 09/2026 – 02/2027
Construction: 03/2027 – 06/2028



